



Wood Grain Tex

CIFS® Wood Grain Specialty Finish

Systems

Rollershield Drainage CIFS®
Aggre-flex Drainage EIFS
Aggre-flex EIFS

VOC: <1% by Weight

VOC: 1.13 g/l

Manufacture Locations:

30058 • 77474 • 84651

**Packaging: 5 gallon
(19L) pail**

**Pail Weight: 60 lbs
(27.2 kg)**

Shelf Life: 2 years

Coverage (estimated)

**Two-Coat Application:
175-200 sf (16-18.6 sm)**

Wood Grain Tex finish recreates the subtle imperfections of a wood finish using plastering techniques. The easily applied texture highlights wall surfaces with a very subtle nuances that when combined with our Glaze and Sealer recreates the look of wood without all the negative aspects.

- **Ready to Use**
- **Ultra thin applications (two thin coats)**
- **Cost effective**
- **Tintable**
- **Accented with Wood Grain Sealer**



masterwall.com

PO Box 397 • Fortson • GA • 31808 • 800-755-0825



Wood Grain Tex

CIFS® Wood Grain Specialty Finish

Temp: 40°-110°F (5°-43°C) • Working Time: 1/2 hr • Dry Time: 24 hrs
at room temperature, working and drying time will vary with temperature and humidity

Application Procedure

Job Conditions – Air and surface temperatures must be 4°C (40°F) or higher and must remain so for a minimum of 24 hours. Avoid exposure to direct sunlight during application. Protect the finish from rain and temperatures less than 40°F (5°C) for a minimum of 24 hours.

Surface Preparation – Master Wall® base coat shall be clean, dry, smooth and free of any mesh pattern with desired wood grain grooves already added.

Mixing – Open pail of Wood Grain Tex and mix approximately one minute with a fixed wheel type paddle or equivalent mixing blade attached to a 1/2" (13 mm) heavy duty drill at 400-500 rpm. Small additions of water, up to 240 ml (8 oz.) per pail, may be added for workability as needed.

Application – Using a Wind-Lock T-VPF2008, T-VPF2411 or T-VPF2812 Stainless Steel Venetian Plaster Trowel apply a very tight, thin coat of Wood Grain Tex to the surface free of trowel marks. Use moderate to high pressure with a trowel angle of about 60° to 80° to the wall surface. The amount of material applied to the wall surface is paper thin. Allow the Wood Grain Tex to take up for 2-3 hours or until fully set up. Clean the surface to remove any dust.

Apply a paper-thin second coat of Wood Grain Tex using short strokes. Allow product to tack up for 10-15 minutes, then wet trowel using a spray bottle and plaster trowel.

Once fully dry, sand in the direction of the grain with 100-grit sandpaper to create a level surface and add some imperfections.

Note: Application problems occur when Wood Grain Tex is applied too thick. Only paper thin applications are necessary.

Surface may be coated after 24 hours with Master Wall® Wood Grain Sealer. Follow individual data sheet instructions for products selected.

Cautions and Limitations

- Wood Grain Tex is not intended for deep depressions or irregular surfaces.
- Slope all exterior surfaces 1:2 minimum to shed water.
- Apply in paper thin applications, shrinkage, cracking or blistering can occur over 1/16" (1.6 mm) thick.
- Application in direct sunlight may affect aesthetics if the Wood Grain Tex dries too quickly. Avoid direct sunlight.
- When cleaning do not use harsh or abrasive cleaners. Wash gently using a soap and water solution followed by a warm water rinse.

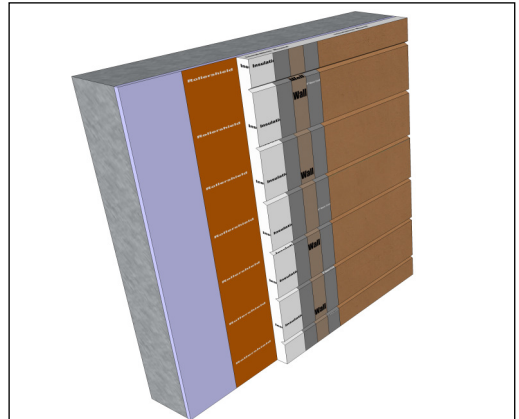
Clean Up

Tools and equipment can be cleaned with soapy water while the Wood Grain Tex is still wet.

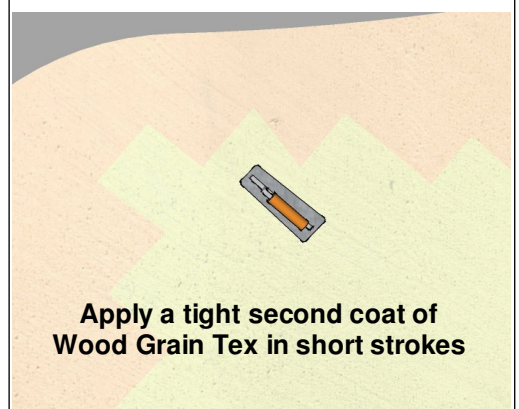
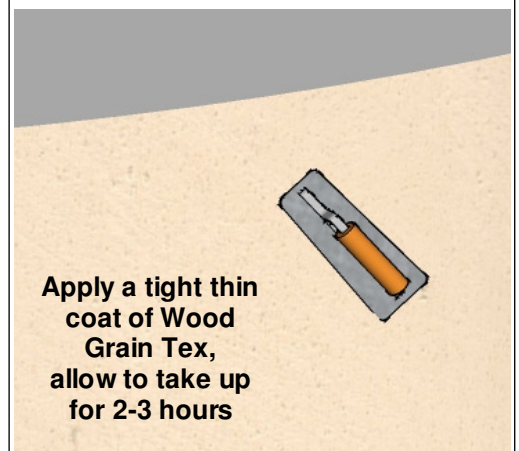
Approved Substrates

Master Wall Base Coats

Others approved in writing



Finish Application



Information contained in this product data sheet conforms to the standard detail recommendations and specifications for the installation of Master Wall Inc.® products and is presented in good faith. Master Wall Inc.® assumes no liability, expressed or implied as to the architecture, engineering, or workmanship of any project. This information may be concurrent with, or superseded by other master documents, such as specifications and details. Contact Master Wall Inc.® for the most current product information. ©2019 Master Wall Inc.®



Master Wall Inc.®
Building a Culture of Excellence
masterwall.com

PO Box 397 • Fortson • GA • 31808 • 800-755-0825