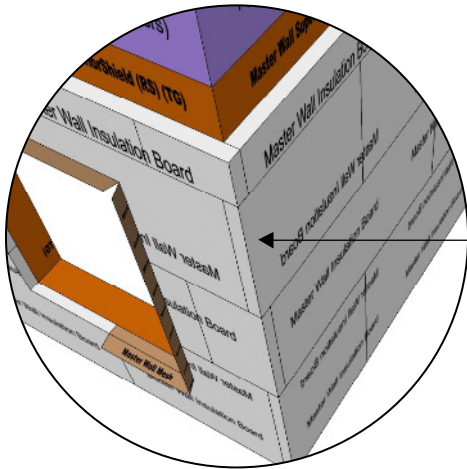


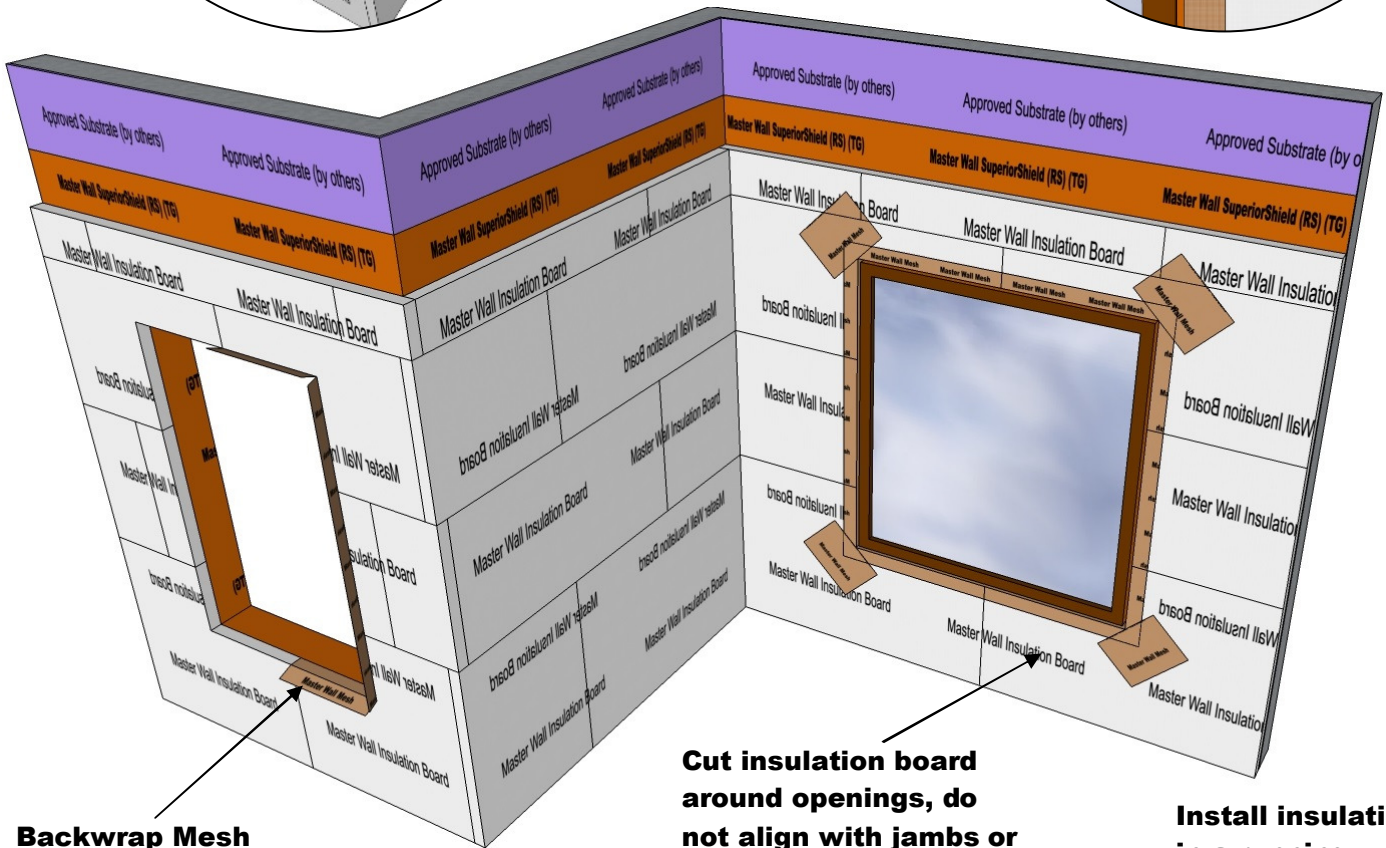
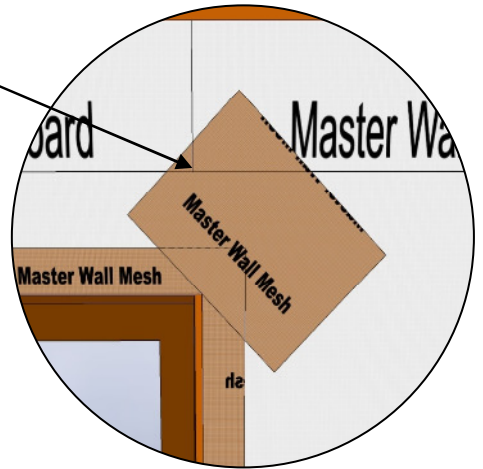


Rollershield Drainage CIFS™ – Continuously Insulated Section 07 24 19

**9" x 12" (23cm x 30 cm)
diagonal reinforcement
at all inside corners**



**Interlock inside and
outside corners**



**Backwrap Mesh
at openings
shown**

**Cut insulation board
around openings, do
not align with jambs or
sills**

**Install insulation
in a running
bond pattern**

RDCIFS-04 TYPICAL INSULATION BOARD LAYOUT

Model Link: <https://3dwarehouse.sketchup.com/model/8140b6a4-1d9a-4b7b-bc6c-7e58dfca93a/Rollershield-Drainage-CIFS%E2%84%A2-Typical-Insulation-Board-Layout>

These drawings relay the conceptual conditions of Master Wall® Systems and are not the construction drawings. Ultimately the design and detailing of an entire wall system is the responsibility of a professional. These details will guide the design professional in the use of Master Wall® Products. Master Wall disclaims design, warranty or construction intent or responsibility. **Bold = Master Wall® Product.** ©2018 Master Wall Inc.®