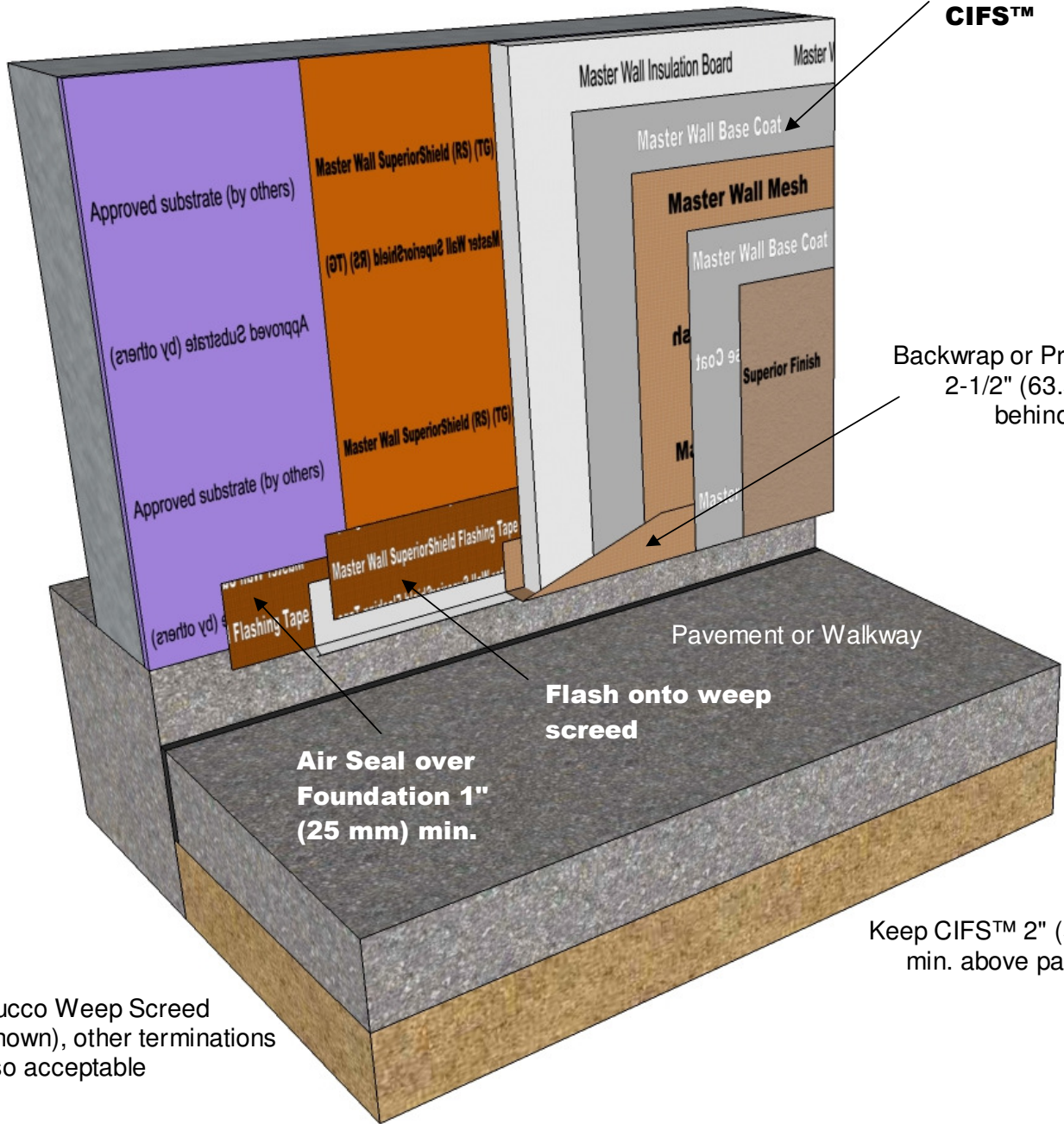




# Rollershield Drainage CIFS™ – Continuously Insulated Section 07 24 19

**Rollershield  
Drainage  
CIFS™**



Backwrap or Prewrap  
2-1/2" (63.5 mm)  
behind EIFS

Keep CIFS™ 2" (50 mm)  
min. above pavement

Stucco Weep Screenshot (shown), other terminations also acceptable

## **RDCIFS-09 TERMINATION AT PAVEMENT**

Model Link: <https://3dwarehouse.sketchup.com/model/2283dff7-4040-4e5c-8322-71847912351d/Rollershield-Drainage-CIFS%E2%84%A2-Pavement-Termination-Detail>

These drawings relay the conceptual conditions of Master Wall® Systems and are not the construction drawings. Ultimately the design and detailing of an entire wall system is the responsibility of a professional. These details will guide the design professional in the use of Master Wall® Products. Master Wall disclaims design, warranty or construction intent or responsibility. **Bold = Master Wall® Product.** ©2018 Master Wall Inc.®