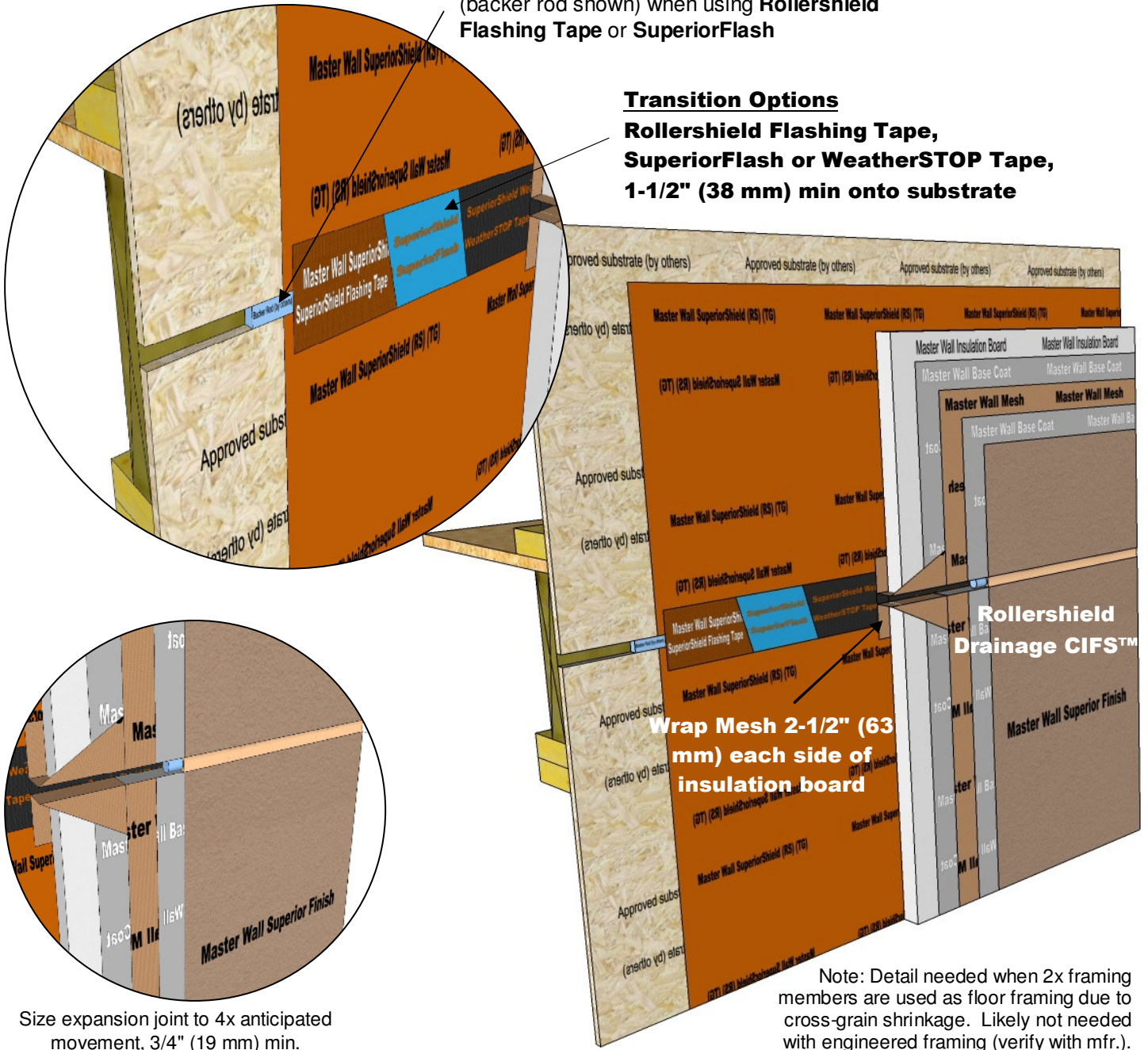




Rollershield Drainage CIFS™ – Continuously Insulated Section 07 24 19

Provide compressible fill at joint location
(backer rod shown) when using **Rollershield
Flashing Tape** or **SuperiorFlash**

Transition Options
Rollershield Flashing Tape,
SuperiorFlash or WeatherSTOP Tape,
1-1/2" (38 mm) min onto substrate



Size expansion joint to 4x anticipated
movement, 3/4" (19 mm) min.

Note: Detail needed when 2x framing
members are used as floor framing due to
cross-grain shrinkage. Likely not needed
with engineered framing (verify with mfr.).

RDCIFS-29 HORIZONTAL EXPANSION JOINT - WOOD FRAME

Model Link: <https://3dwarehouse.sketchup.com/model/bfbc4e1e-12cb-44fc-a0a8-4b6c5ffb71ad/Rollershield-Drainage-CIFS%E2%84%A2-Floor-Line-Expansion-Joint>

These drawings relay the conceptual conditions of Master Wall® Systems and are not the construction drawings. Ultimately the design and detailing of an entire wall system is the responsibility of a professional. These details will guide the design professional in the use of Master Wall® Products. Master Wall disclaims design, warranty or construction intent or responsibility. **Bold = Master Wall® Product.**

©2018 Master Wall Inc.®