



Master Wall Inc.
Building a Culture of Excellence

**ROLLERSHIELD DRAINAGE
CIFS® TYPE MW**

SYSTEM DETAIL

ROLLERSHIELD DRAINAGE CIFS® TYPE MW TYPICAL DETAILS

RDCIFSMW-01 STANDARD AND IMPACT CROSS SECTION
RDCIFSMW-02 TYPICAL INSULATION ATTACHMENT
RDCIFSMW-03 TYPICAL SUPERIORSHIELD APPLICATION
RDCIFSMW-04 TYPICAL INSULATION BOARD LAYOUT
RDCIFSMW-05 STUCCO WEEP SCREED TERMINATION
RDCIFSMW-06 FLASHING ANGLE TERMINATION
RDCIFSMW-07 DRAINAGE TRACK TERMINATION
RDCIFSMW-08 DV ROLL TERMINATION
RDCIFSMW-09 TERMINATION AT PAVEMENT
RDCIFSMW-10 TERMINATION AT SUPPORTED SLAB
RDCIFSMW-11 TYPICAL STOREFRONT WINDOW HEAD
RDCIFSMW-12 TYPICAL STOREFRONT WINDOW JAMB
RDCIFSMW-13 TYPICAL STOREFRONT WINDOW SILL
RDCIFSMW-14 TYPICAL FLANGED WINDOW HEAD
RDCIFSMW-15 FLANGED WINDOW JAMB
RDCIFSMW-16 TYPICAL FLANGED WINDOW SILL
RDCIFSMW-17 TYPICAL HOLLOW METAL DOOR HEAD
RDCIFSMW-18 TYPICAL HOLLOW METAL DOOR JAMB
RDCIFSMW-19 DECK FLASHING TERMINATION
RDCIFSMW-20 TYPICAL PLUMBING SPIGOT DETAIL
RDCIFSMW-21 TYPICAL PIPE PENETRATION DETAIL
RDCIFSMW-22 TYPICAL DRYER VENT DETAIL
RDCIFSMW-23 TYPICAL DOWNSPOUT ATTACHMENT
RDCIFSMW-24 TYPICAL SIGNAGE ATTACHMENT
RDCIFSMW-25 TYPICAL FIXTURE ATTACHMENT
RDCIFSMW-26 TYPICAL AESTHETIC JOINTS
RDCIFSMW-27 TYPICAL AESTHETIC PROJECTION
RDCIFSMW-28 VERTICAL EXPANSION JOINT
RDCIFSMW-29 HORIZONTAL EXPANSION JOINT - WOOD FRAME
RDCIFSMW-30 HORIZONTAL EXPANSION JOINT - METAL FRAME
RDCIFSMW-31 FLOOR LINE DRAINAGE
RDCIFSMW-32 DISSIMILAR SUBSTRATES
RDCIFSMW-33 DISSIMILAR MATERIALS
RDCIFSMW-34 DISSIMILAR CLADDING TRANSITION CONTINUOUS WATER BARRIER
RDCIFSMW-35 DISSIMILAR CLADDING TRANSITION WITH FLASHING
RDCIFSMW-36 SOFFIT/DRIP
RDCIFSMW-37 PARAPET CAP
RDCIFSMW-38 FLAT ROOF TERMINATION
RDCIFSMW-39 SLOPED ROOF TERMINATION
RDCIFSMW-40 KICK OUT FLASHING
RDCIFSMW-41 CHIMNEY CRICKET



PO Box 397 · Fortson · GA · 31808 · 800-755-0825 · masterwall.com

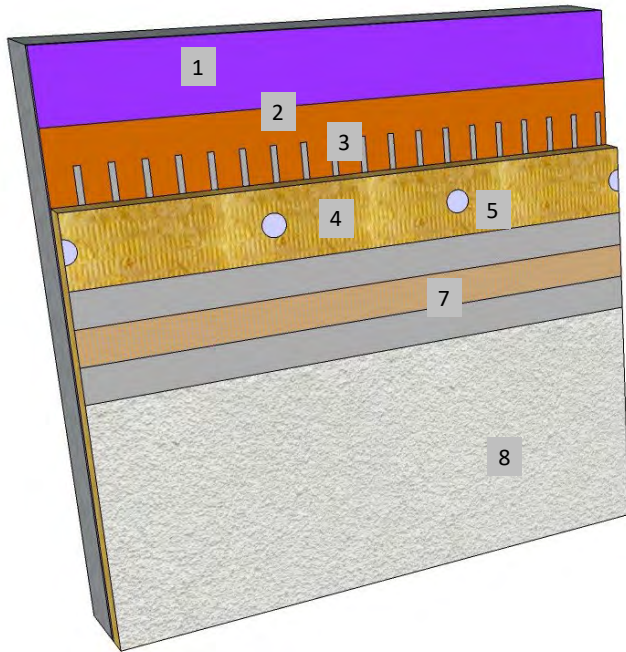
These drawings relay the conceptual conditions of Master Wall® Systems and are not the construction drawings. Ultimately the design and detailing of an entire wall system is the responsibility of a professional. These details will guide the design professional in the use of Master Wall® Products. Master Wall disclaims design, warranty or construction intent or responsibility. Bold or Brand Name = Master Wall® Product. ©2025 Master Wall Inc.®



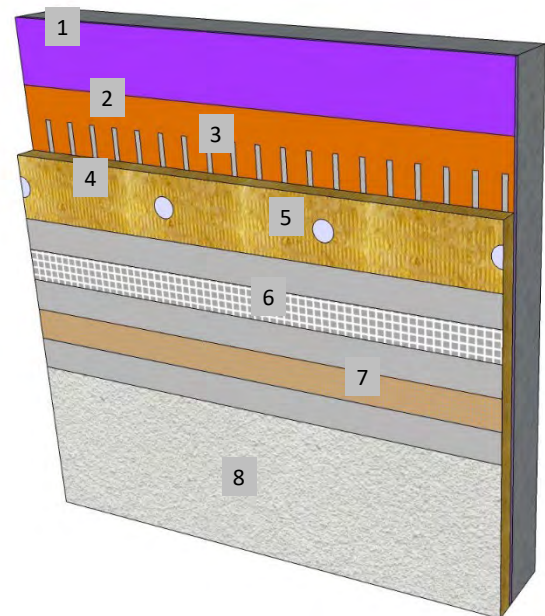
Master Wall Inc.
Building a Culture of Excellence

**ROLLERSHIELD DRAINAGE
CIFS® TYPE MW**

SYSTEM DETAIL



SINGLE LAYER MESH SYSTEM



DOUBLE LAYER MESH SYSTEM

1. FRAMING & APPROVED SUBSTRATE
2. **ROLLERSHIELD AIR/WATER BARRIER**
3. **CHANNELED ADHESIVE**
4. MINERAL WOOL INSULATION BOARD
5. APPROVED FASTENERS
6. **MASTER WALL BASE COAT AND STRONG OR ULTRA MESH**
7. **MASTER WALL BASE COAT AND MESH**
8. **SUPERIOR FINISH**

RDCIFSMW-01 STANDARD AND IMPACT CROSS SECTION



Master Wall Inc.
Building a Culture of Excellence

PO Box 397 · Fortson · GA · 31808 · 800-755-0825 · masterwall.com

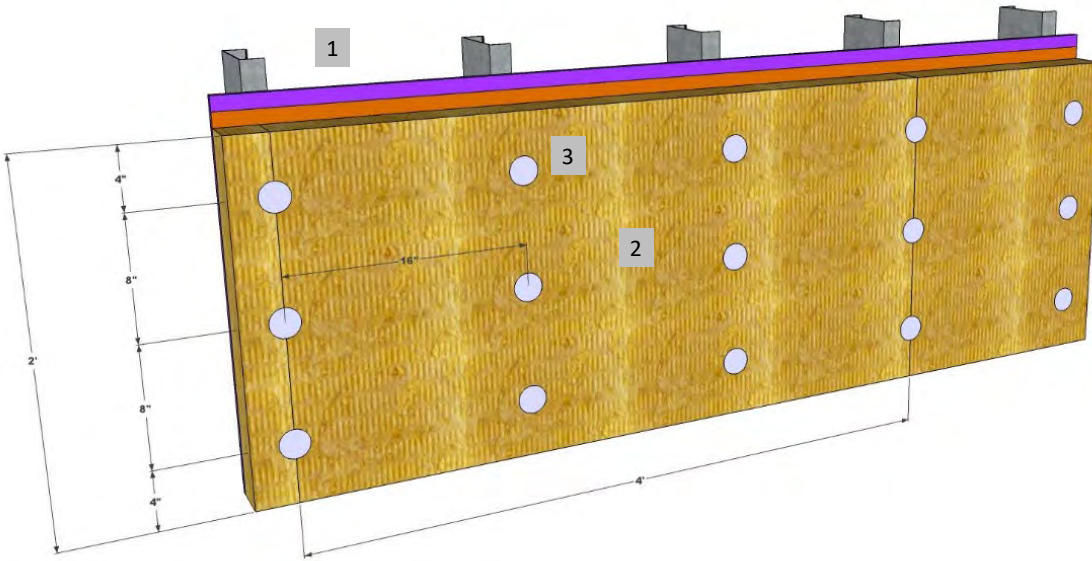
These drawings relay the conceptual conditions of Master Wall® Systems and are not the construction drawings. Ultimately the design and detailing of an entire wall system is the responsibility of a professional. These details will guide the design professional in the use of Master Wall® Products. Master Wall disclaims design, warranty or construction intent or responsibility. Bold or Brand Name = Master Wall® Product. ©2025 Master Wall Inc.®



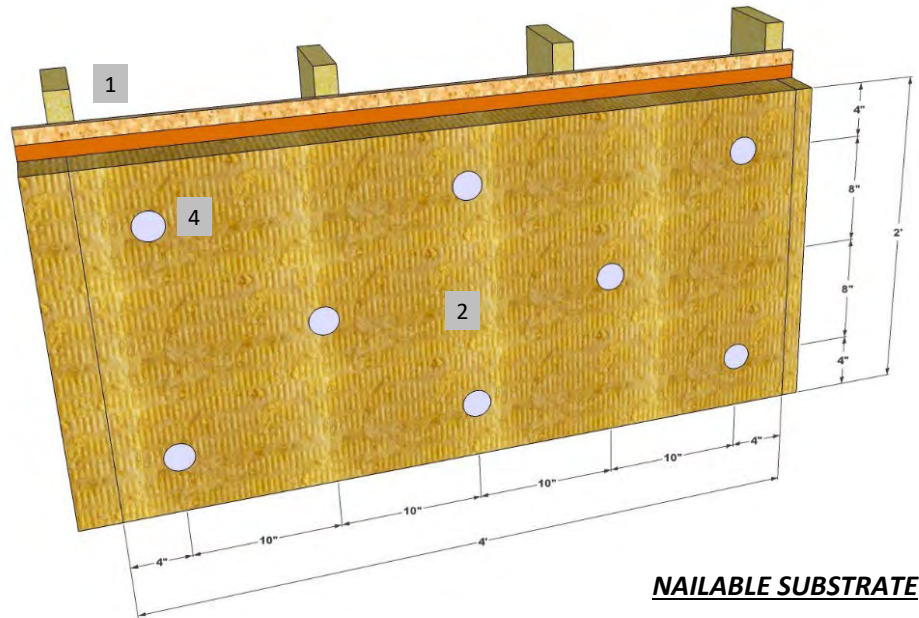
Master Wall Inc.
Building a Culture of Excellence

**ROLLERSHIELD DRAINAGE
CIFS® TYPE MW**

SYSTEM DETAIL



NON NAILABLE SUBSTRATE



NAILABLE SUBSTRATE

1. FRAMING & SUBSTRATE
2. 24" X 48" (61 X 122 CM) MINERAL WOOL INSULATION BOARD
3. APPROVED FASTENERS AND PLATES ATTACHED AT FRAMING MEMBERS
4. APPROVED FASTENERS AND PLATES ATTACHED INTO SUBSTRATE

RDCIFSMW-02 INSULATION ATTACHMENT METHODS

Master Wall Inc.
Building a Culture of Excellence

PO Box 397 · Fortson · GA · 31808 · 800-755-0825 · masterwall.com

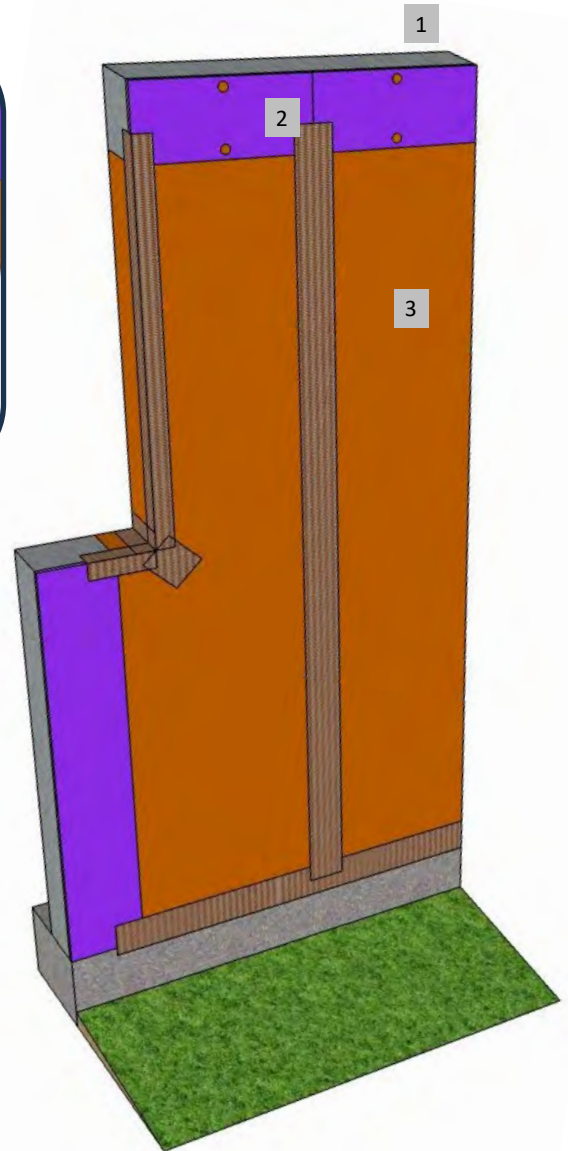
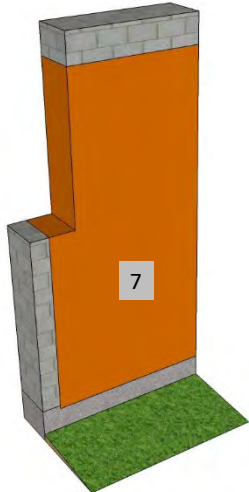
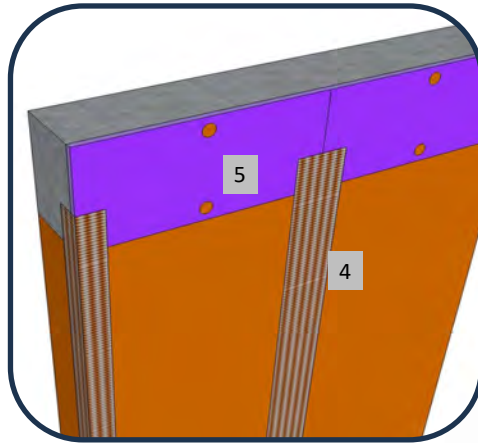
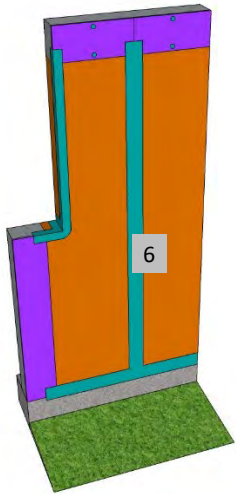
These drawings relay the conceptual conditions of Master Wall® Systems and are not the construction drawings. Ultimately the design and detailing of an entire wall system is the responsibility of a professional. These details will guide the design professional in the use of Master Wall® Products. Master Wall disclaims design, warranty or construction intent or responsibility. Bold or Brand Name = Master Wall® Product. ©2025 Master Wall Inc.®



Master Wall Inc.
Building a Culture of Excellence

**ROLLERSHIELD DRAINAGE
CIFS® TYPE MW**

SYSTEM DETAIL



1. FRAMING
2. APPROVED SUBSTRATE
3. ROLLERSHIELD AIR/WATER BARRIER
4. SUPERIORSHIELD FLASHING TAPE REINFORCEMENT AT SUBSTRATE JOINTS AND TRANSITIONS
5. SPOT FASTENERS WHERE NEEDED
6. SUPERIORFLASH OPTION AT SEAMS AND OPENINGS
7. CMU/CONCRETE APPLICATION

RDCIFSMW-03 TYPICAL SUPERIORSHIELD APPLICATION

M Master Wall Inc.
Building a Culture of Excellence

PO Box 397 · Fortson · GA · 31808 · 800-755-0825 · masterwall.com

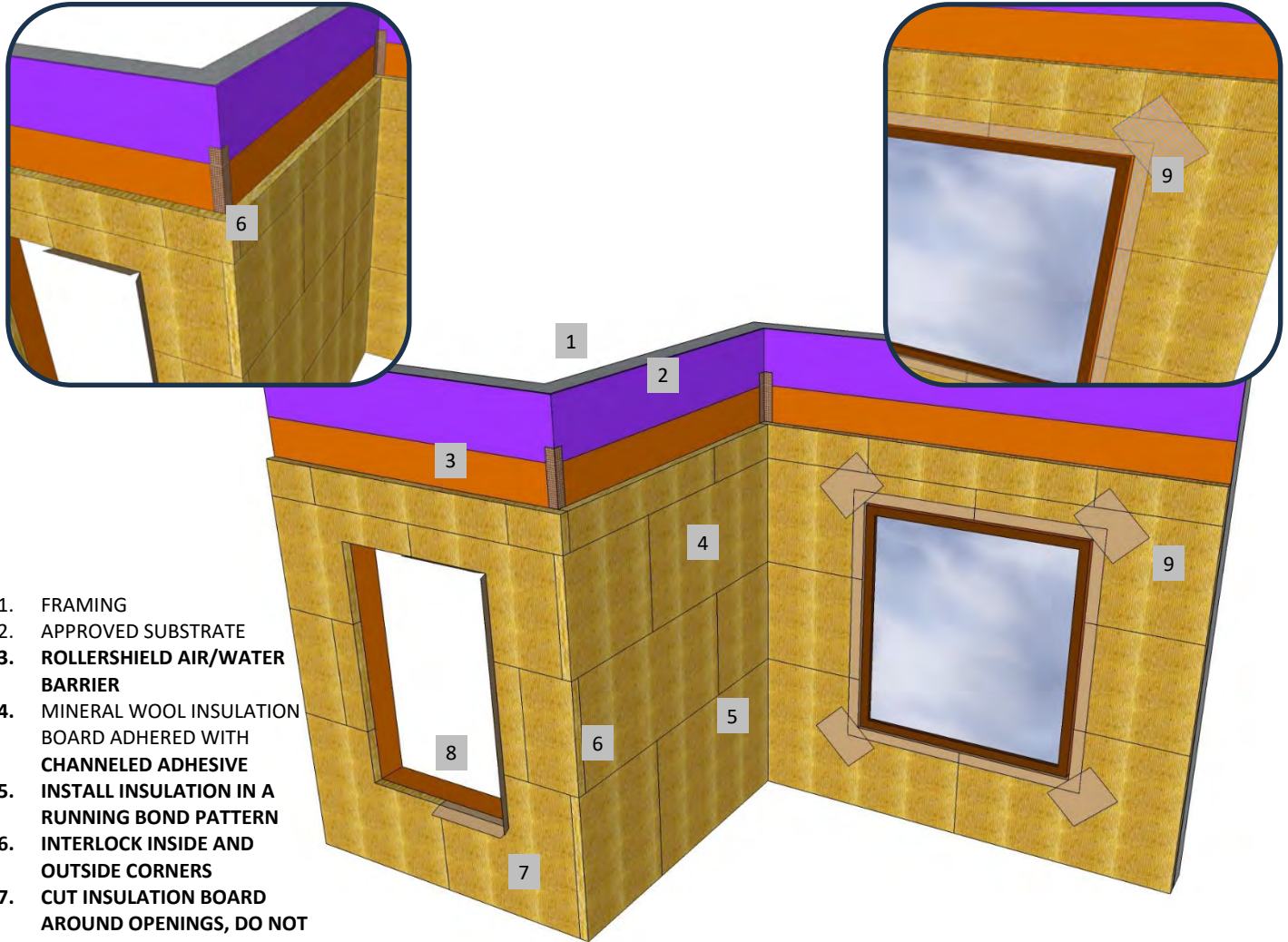
These drawings relay the conceptual conditions of Master Wall® Systems and are not the construction drawings. Ultimately the design and detailing of an entire wall system is the responsibility of a professional. These details will guide the design professional in the use of Master Wall® Products. Master Wall disclaims design, warranty or construction intent or responsibility. Bold or Brand Name = Master Wall® Product. ©2025 Master Wall Inc.®



Master Wall Inc.
Building a Culture of Excellence

**ROLLERSHIELD DRAINAGE
CIFS® TYPE MW**

SYSTEM DETAIL



1. FRAMING
2. APPROVED SUBSTRATE
3. **ROLLERSHIELD AIR/WATER BARRIER**
4. MINERAL WOOL INSULATION BOARD ADHERED WITH CHanneled ADHESIVE
5. INSTALL INSULATION IN A RUNNING BOND PATTERN
6. INTERLOCK INSIDE AND OUTSIDE CORNERS
7. CUT INSULATION BOARD AROUND OPENINGS, DO NOT ALIGN WITH JAMBS OR SILLS
8. BACKWRAP MESH AT OPENINGS SHOWN, BACKWRAP OR PREWRAP 2-1/2" (63.5 MM) BEHIND INSULATION BOARD
9. 9" X 12" (23 CM X 30 CM) DIAGONAL REINFORCEMENT AT ALL INSIDE CORNERS

RDCIFSMW-04 TYPICAL INSULATION BOARD LAYOUT

M Master Wall Inc.
Building a Culture of Excellence

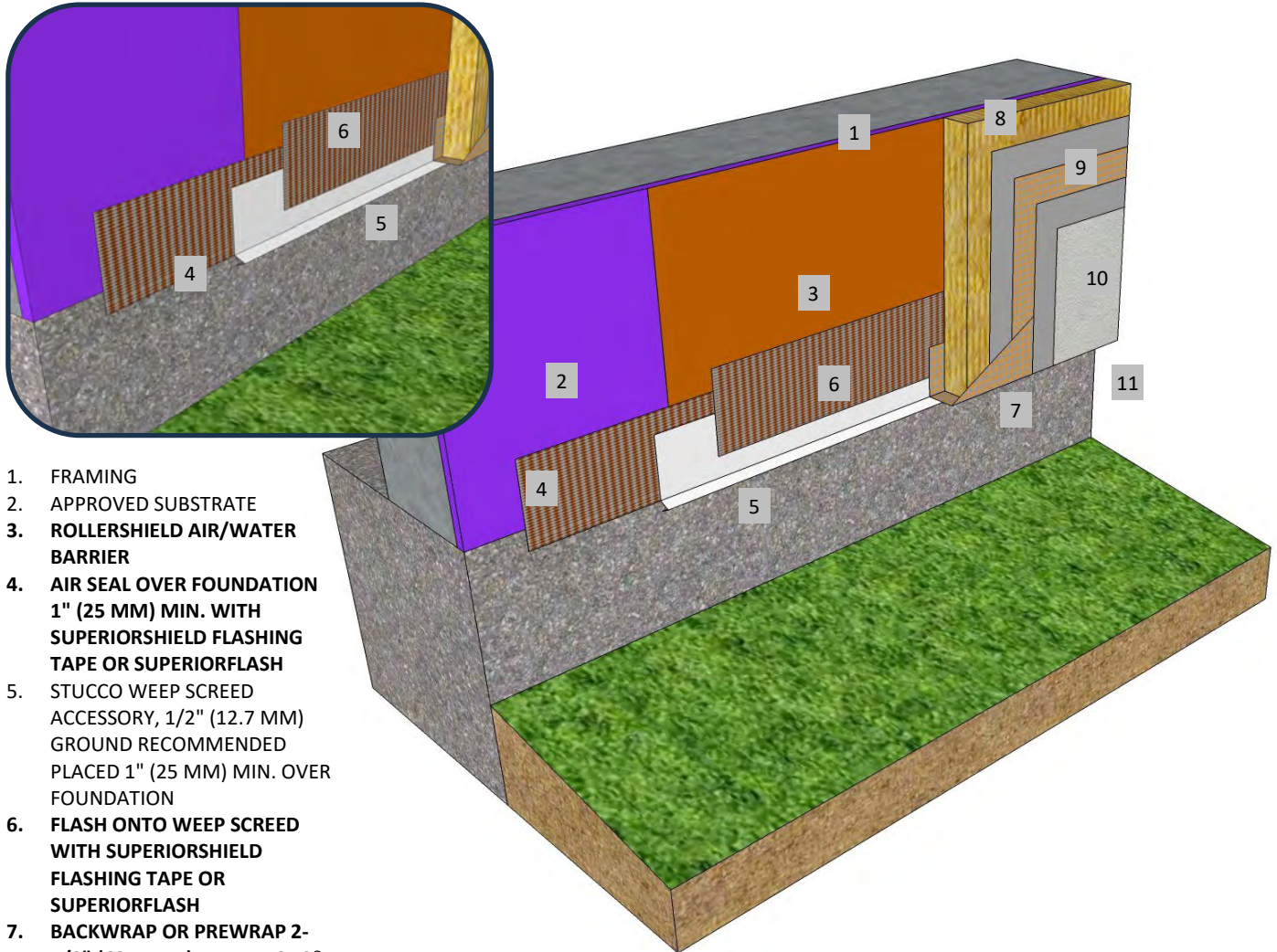
These drawings relay the conceptual conditions of Master Wall® Systems and are not the construction drawings. Ultimately the design and detailing of an entire wall system is the responsibility of a professional. These details will guide the design professional in the use of Master Wall® Products. Master Wall disclaims design, warranty or construction intent or responsibility. Bold or Brand Name = Master Wall® Product. ©2025 Master Wall Inc.®



Master Wall Inc.
Building a Culture of Excellence

**ROLLERSHIELD DRAINAGE
CIFS® TYPE MW**

SYSTEM DETAIL



1. FRAMING
2. APPROVED SUBSTRATE
3. ROLLERSHIELD AIR/WATER BARRIER
4. AIR SEAL OVER FOUNDATION 1" (25 MM) MIN. WITH SUPERIORSHIELD FLASHING TAPE OR SUPERIORFLASH
5. STUCCO WEEP SCREED ACCESSORY, 1/2" (12.7 MM) GROUND RECOMMENDED PLACED 1" (25 MM) MIN. OVER FOUNDATION
6. FLASH ONTO WEEP SCREED WITH SUPERIORSHIELD FLASHING TAPE OR SUPERIORFLASH
7. BACKWRAP OR PREWRAP 2-1/2" (63.5 MM) BEHIND CIFS®
8. MINERAL WOOL INSULATION BOARD ADHERED WITH CHanneled ADHESIVE
9. MASTER WALL BASE COAT AND MESH
10. SUPERIOR FINISH
11. KEEP CIFS® 6" (152 MM) MIN. ABOVE GRADE

RDCIFSMW-05 STUCCO WEEP SCREED TERMINATION

M Master Wall Inc.
Building a Culture of Excellence

PO Box 397 · Fortson · GA · 31808 · 800-755-0825 · masterwall.com

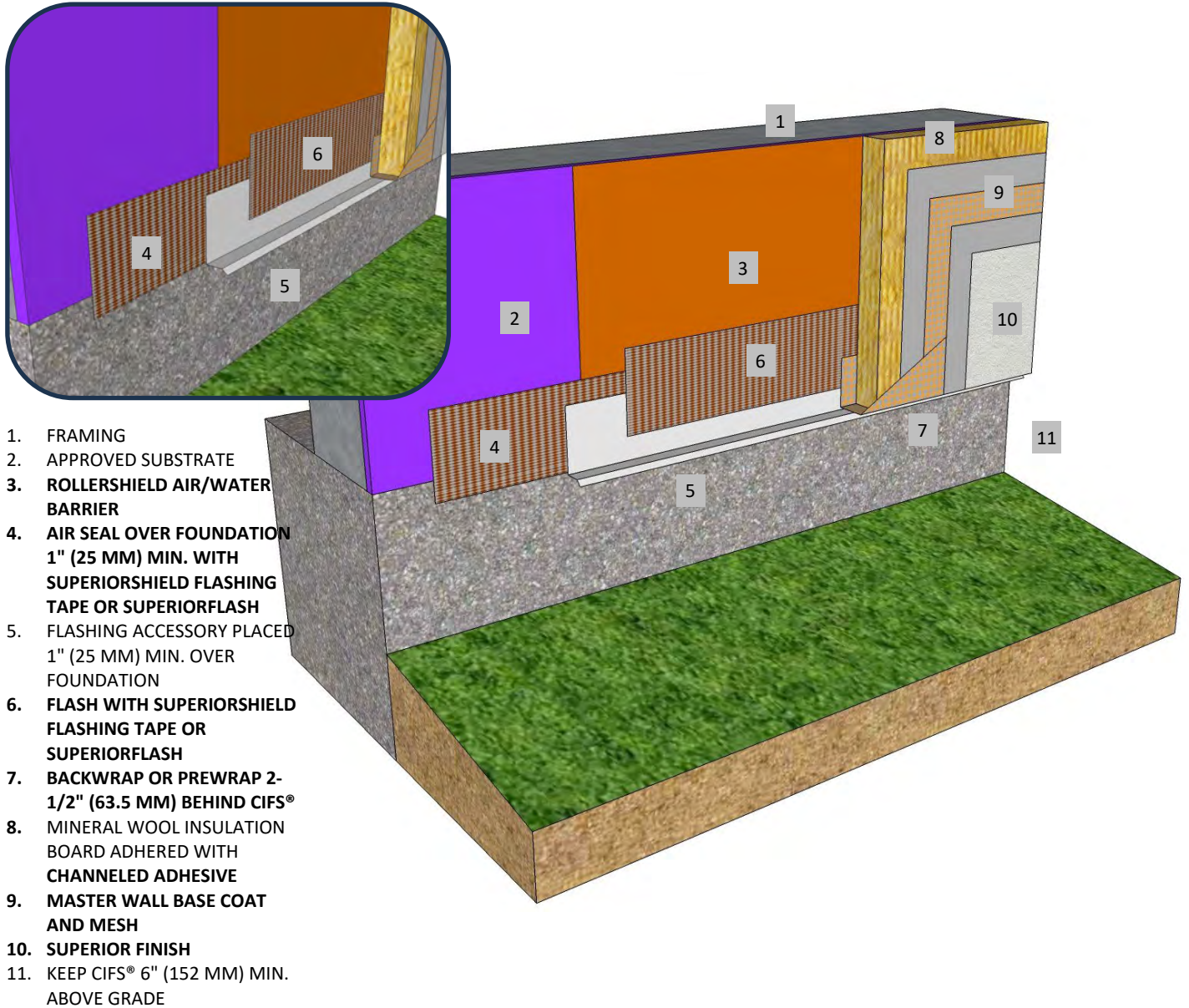
These drawings relay the conceptual conditions of Master Wall® Systems and are not the construction drawings. Ultimately the design and detailing of an entire wall system is the responsibility of a professional. These details will guide the design professional in the use of Master Wall® Products. Master Wall disclaims design, warranty or construction intent or responsibility. Bold or Brand Name = Master Wall® Product. ©2025 Master Wall Inc.®



Master Wall Inc.
Building a Culture of Excellence

**ROLLERSHIELD DRAINAGE
CIFS® TYPE MW**

SYSTEM DETAIL



RDCIFSMW-06 FLASHING ANGLE TERMINATION

M Master Wall Inc.
Building a Culture of Excellence

PO Box 397 · Fortson · GA · 31808 · 800-755-0825 · masterwall.com

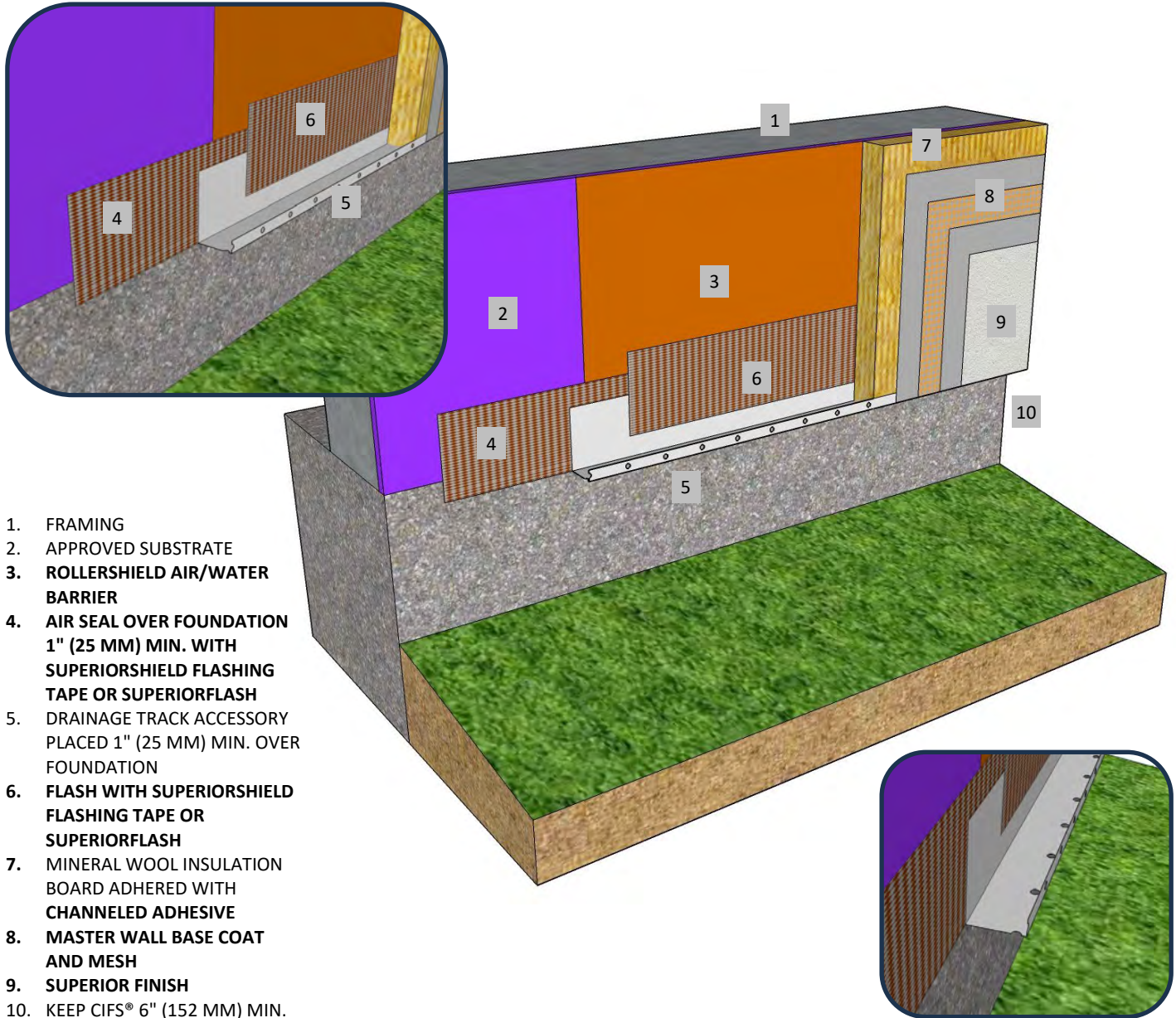
These drawings relay the conceptual conditions of Master Wall® Systems and are not the construction drawings. Ultimately the design and detailing of an entire wall system is the responsibility of a professional. These details will guide the design professional in the use of Master Wall® Products. Master Wall disclaims design, warranty or construction intent or responsibility. Bold or Brand Name = Master Wall® Product. ©2025 Master Wall Inc.®



Master Wall Inc.
Building a Culture of Excellence

**ROLLERSHIELD DRAINAGE
CIFS® TYPE MW**

SYSTEM DETAIL



1. FRAMING
2. APPROVED SUBSTRATE
3. **ROLLERSHIELD AIR/WATER BARRIER**
4. **AIR SEAL OVER FOUNDATION 1" (25 MM) MIN. WITH SUPERIORSHIELD FLASHING TAPE OR SUPERIORFLASH**
5. DRAINAGE TRACK ACCESSORY PLACED 1" (25 MM) MIN. OVER FOUNDATION
6. **FLASH WITH SUPERIORSHIELD FLASHING TAPE OR SUPERIORFLASH**
7. MINERAL WOOL INSULATION BOARD ADHERED WITH **CHANNELED ADHESIVE**
8. **MASTER WALL BASE COAT AND MESH**
9. **SUPERIOR FINISH**
10. KEEP CIFS® 6" (152 MM) MIN. ABOVE GRADE

RDCIFSMW-07 DRAINAGE TRACK TERMINATION

M Master Wall Inc.
Building a Culture of Excellence

PO Box 397 · Fortson · GA · 31808 · 800-755-0825 · masterwall.com

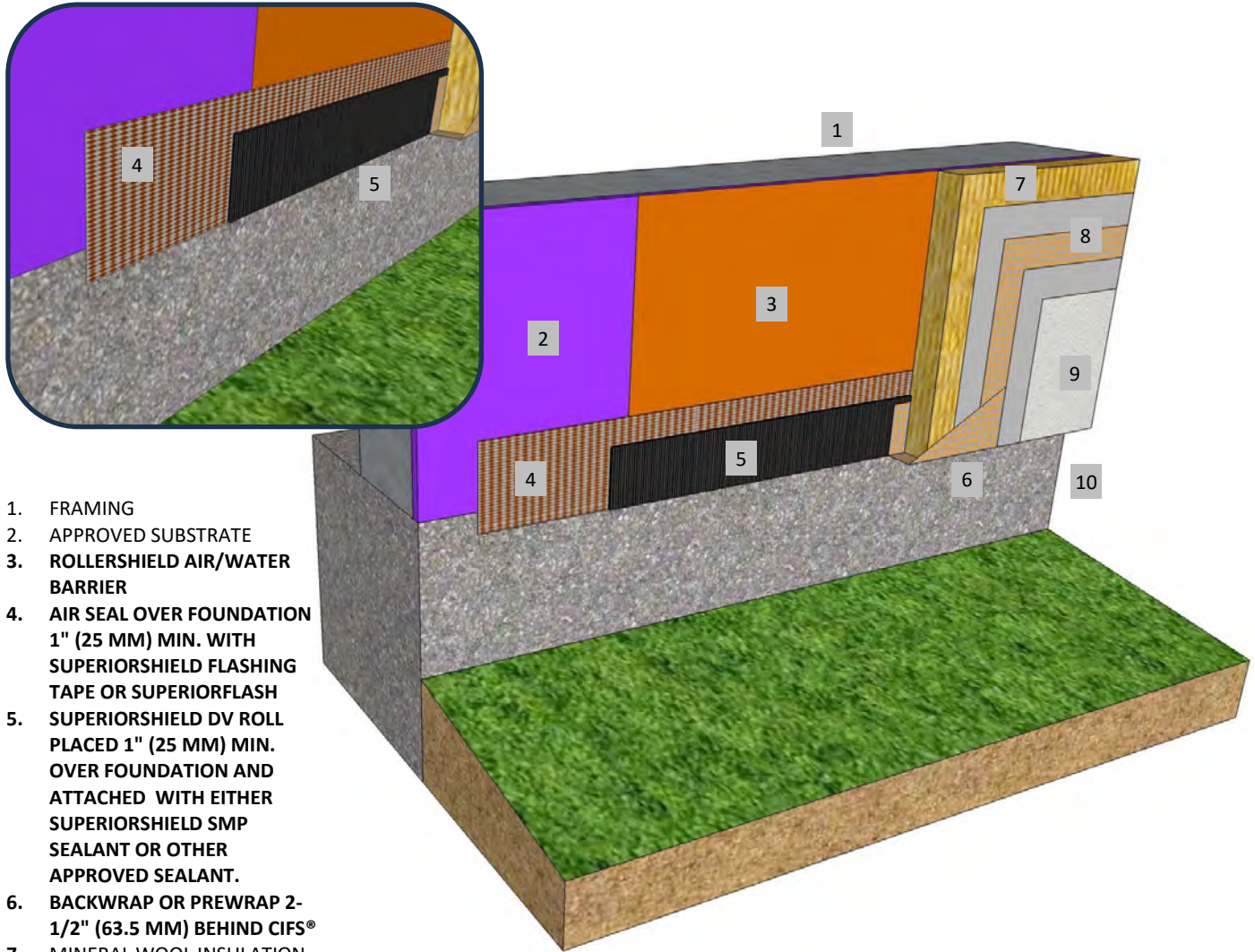
These drawings relay the conceptual conditions of Master Wall® Systems and are not the construction drawings. Ultimately the design and detailing of an entire wall system is the responsibility of a professional. These details will guide the design professional in the use of Master Wall® Products. Master Wall disclaims design, warranty or construction intent or responsibility. Bold or Brand Name = Master Wall® Product. ©2025 Master Wall Inc.®



Master Wall Inc.
Building a Culture of Excellence

**ROLLERSHIELD DRAINAGE
CIFS® TYPE MW**

SYSTEM DETAIL



1. FRAMING
2. APPROVED SUBSTRATE
3. ROLLERSHIELD AIR/WATER BARRIER
4. AIR SEAL OVER FOUNDATION 1" (25 MM) MIN. WITH SUPERIORSHIELD FLASHING TAPE OR SUPERIORFLASH
5. SUPERIORSHIELD DV ROLL PLACED 1" (25 MM) MIN. OVER FOUNDATION AND ATTACHED WITH EITHER SUPERIORSHIELD SMP SEALANT OR OTHER APPROVED SEALANT.
6. BACKWRAP OR PREWRAP 2-1/2" (63.5 MM) BEHIND CIFS®
7. MINERAL WOOL INSULATION BOARD ADHERED WITH CHANNELED ADHESIVE
8. MASTER WALL BASE COAT AND MESH
9. SUPERIOR FINISH
10. KEEP CIFS® 6" (152 MM) MIN.

RDCIFSMW-08 SUPERIORSHIELD DV ROLL TERMINATION



PO Box 397 · Fortson · GA · 31808 · 800-755-0825 · masterwall.com

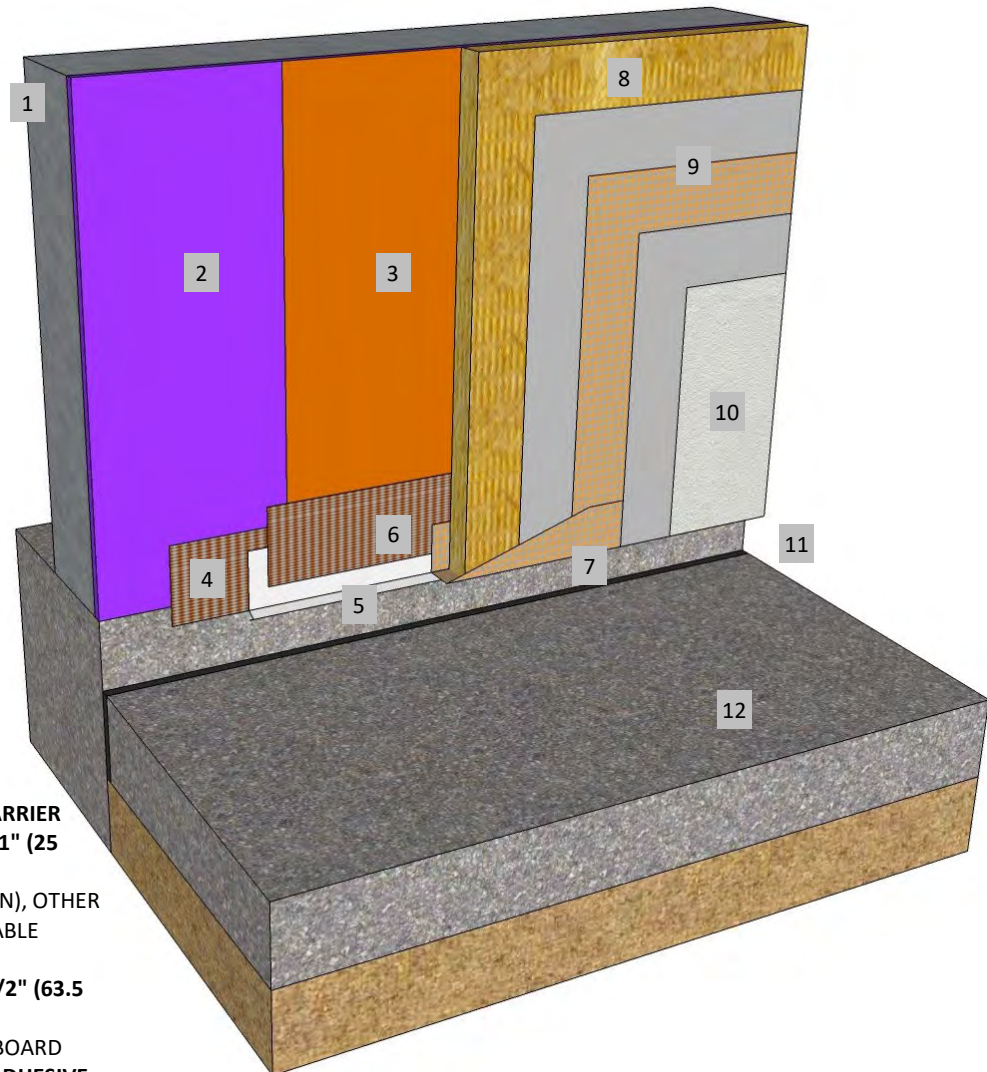
These drawings relay the conceptual conditions of Master Wall® Systems and are not the construction drawings. Ultimately the design and detailing of an entire wall system is the responsibility of a professional. These details will guide the design professional in the use of Master Wall® Products. Master Wall disclaims design, warranty or construction intent or responsibility. Bold or Brand Name = Master Wall® Product. ©2025 Master Wall Inc.®



Master Wall Inc.
Building a Culture of Excellence

**ROLLERSHIELD DRAINAGE
CIFS® TYPE MW**

SYSTEM DETAIL



1. FRAMING
2. APPROVED SUBSTRATE
3. ROLLERSHIELD AIR/WATER BARRIER
4. AIR SEAL OVER FOUNDATION 1" (25 MM) MIN.
5. STUCCO WEEP SCREED (SHOWN), OTHER TERMINATIONS ALSO ACCEPTABLE
6. FLASH ONTO WEEP SCREED
7. BACKWRAP OR PREWRAP 2-1/2" (63.5 MM) BEHIND CIFS®
8. MINERAL WOOL INSULATION BOARD ADHERED WITH CHANNELED ADHESIVE
9. MASTER WALL BASE COAT AND MESH
10. SUPERIOR FINISH
11. KEEP CIFS™ 2" (50 MM) MIN. ABOVE PAVEMENT
12. PAVEMENT OR WALKWAY

RDCIFSMW-09 TERMINATION AT PAVEMENT

M Master Wall Inc.
Building a Culture of Excellence

PO Box 397 · Fortson · GA · 31808 · 800-755-0825 · masterwall.com

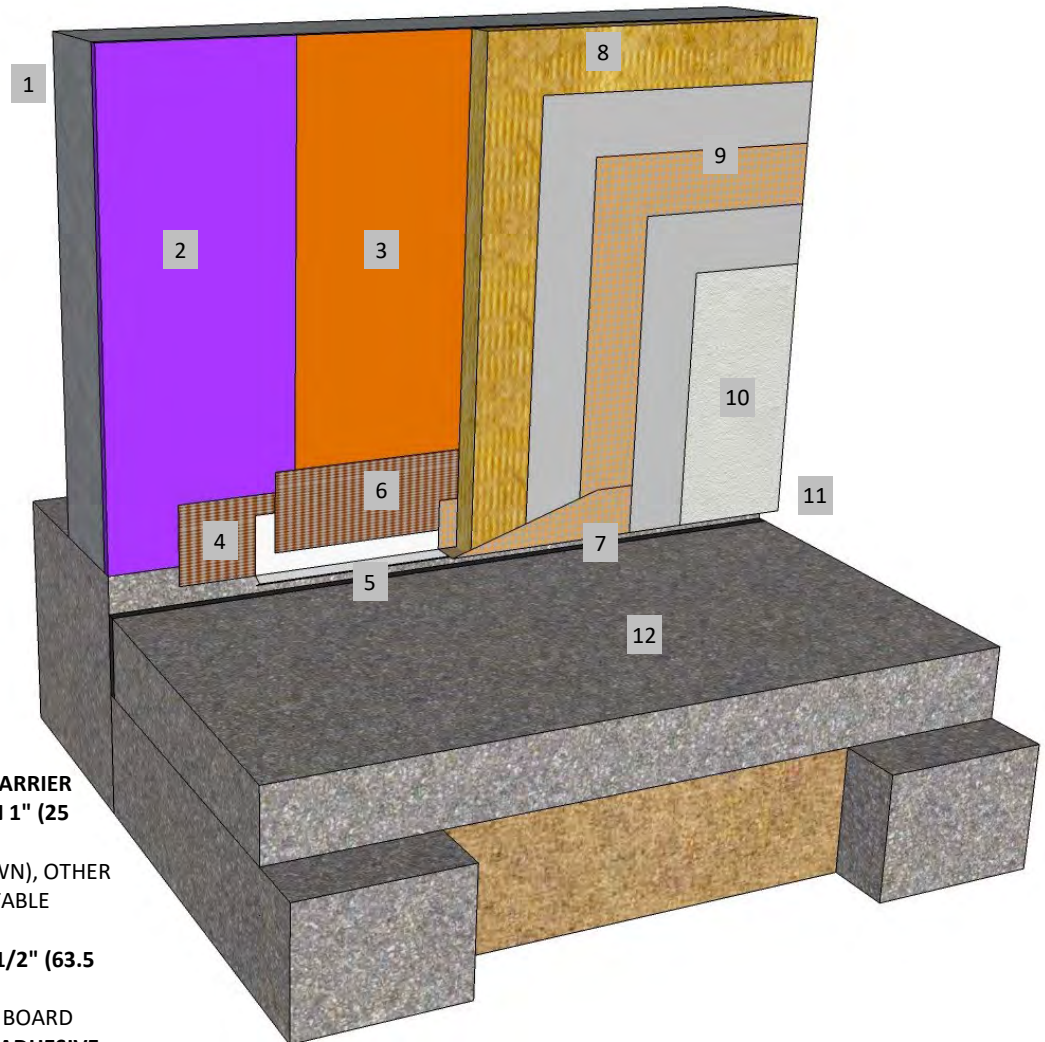
These drawings relay the conceptual conditions of Master Wall® Systems and are not the construction drawings. Ultimately the design and detailing of an entire wall system is the responsibility of a professional. These details will guide the design professional in the use of Master Wall® Products. Master Wall disclaims design, warranty or construction intent or responsibility. Bold or Brand Name = Master Wall® Product. ©2025 Master Wall Inc.®



Master Wall Inc.
Building a Culture of Excellence

**ROLLERSHIELD DRAINAGE
CIFS® TYPE MW**

SYSTEM DETAIL



1. FRAMING
2. APPROVED SUBSTRATE
3. ROLLERSHIELD AIR/WATER BARRIER
4. AIR SEAL OVER FOUNDATION 1" (25 MM) MIN.
5. STUCCO WEEP SCREED (SHOWN), OTHER TERMINATIONS ALSO ACCEPTABLE
6. FLASH ONTO WEEP SCREED
7. BACKWRAP OR PREWRAP 2-1/2" (63.5 MM) BEHIND CIFS®
8. MINERAL WOOL INSULATION BOARD ADHERED WITH CHANNELED ADHESIVE
9. MASTER WALL BASE COAT AND MESH
10. SUPERIOR FINISH
11. KEEP CIFS™ 3/4" (19 MM) MIN. ABOVE SUPPORTED SLAB
12. SUPPORTED SLAB

RDCIFSMW-10 TERMINATION AT SUPPORTED SLAB

M Master Wall Inc.
Building a Culture of Excellence

PO Box 397 · Fortson · GA · 31808 · 800-755-0825 · masterwall.com

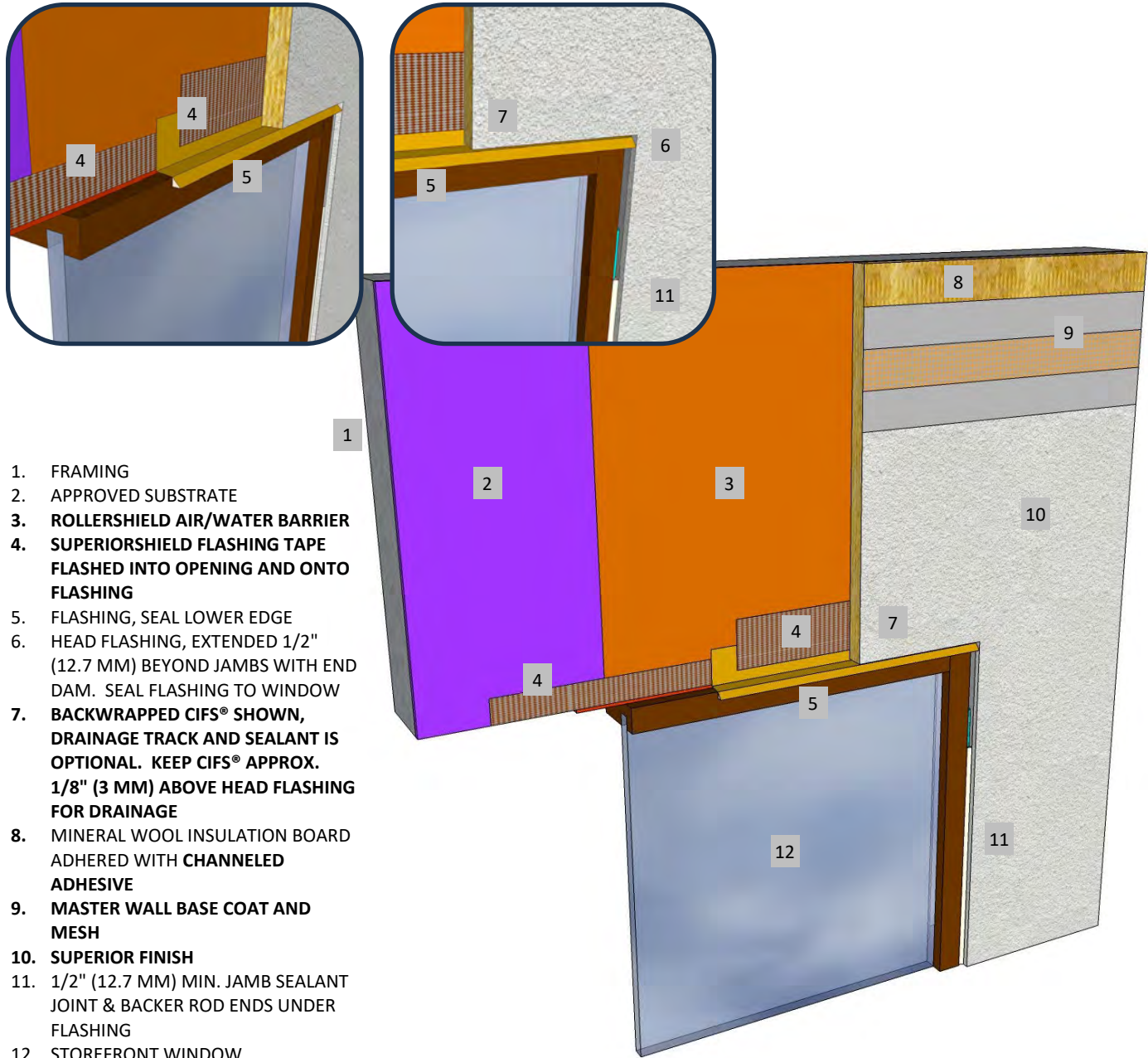
These drawings relay the conceptual conditions of Master Wall® Systems and are not the construction drawings. Ultimately the design and detailing of an entire wall system is the responsibility of a professional. These details will guide the design professional in the use of Master Wall® Products. Master Wall disclaims design, warranty or construction intent or responsibility. Bold or Brand Name = Master Wall® Product. ©2025 Master Wall Inc.®



Master Wall Inc.
Building a Culture of Excellence

**ROLLERSHIELD DRAINAGE
CIFS® TYPE MW**

SYSTEM DETAIL



1. FRAMING
2. APPROVED SUBSTRATE
3. **ROLLERSHIELD AIR/WATER BARRIER**
4. **SUPERIORSHIELD FLASHING TAPE
FLASHED INTO OPENING AND ONTO
FLASHING**
5. FLASHING, SEAL LOWER EDGE
6. HEAD FLASHING, EXTENDED 1/2"
(12.7 MM) BEYOND JAMBS WITH END
DAM. SEAL FLASHING TO WINDOW
7. **BACKWRAPPED CIFS® SHOWN,
DRAINAGE TRACK AND SEALANT IS
OPTIONAL. KEEP CIFS® APPROX.
1/8" (3 MM) ABOVE HEAD FLASHING
FOR DRAINAGE**
8. MINERAL WOOL INSULATION BOARD
ADHERED WITH **CHANNELED
ADHESIVE**
9. **MASTER WALL BASE COAT AND
MESH**
10. **SUPERIOR FINISH**
11. 1/2" (12.7 MM) MIN. JAMB SEALANT
JOINT & BACKER ROD ENDS UNDER
FLASHING
12. STOREFRONT WINDOW

RDCIFS MW-11 TYPICAL STOREFRONT WINDOW HEAD

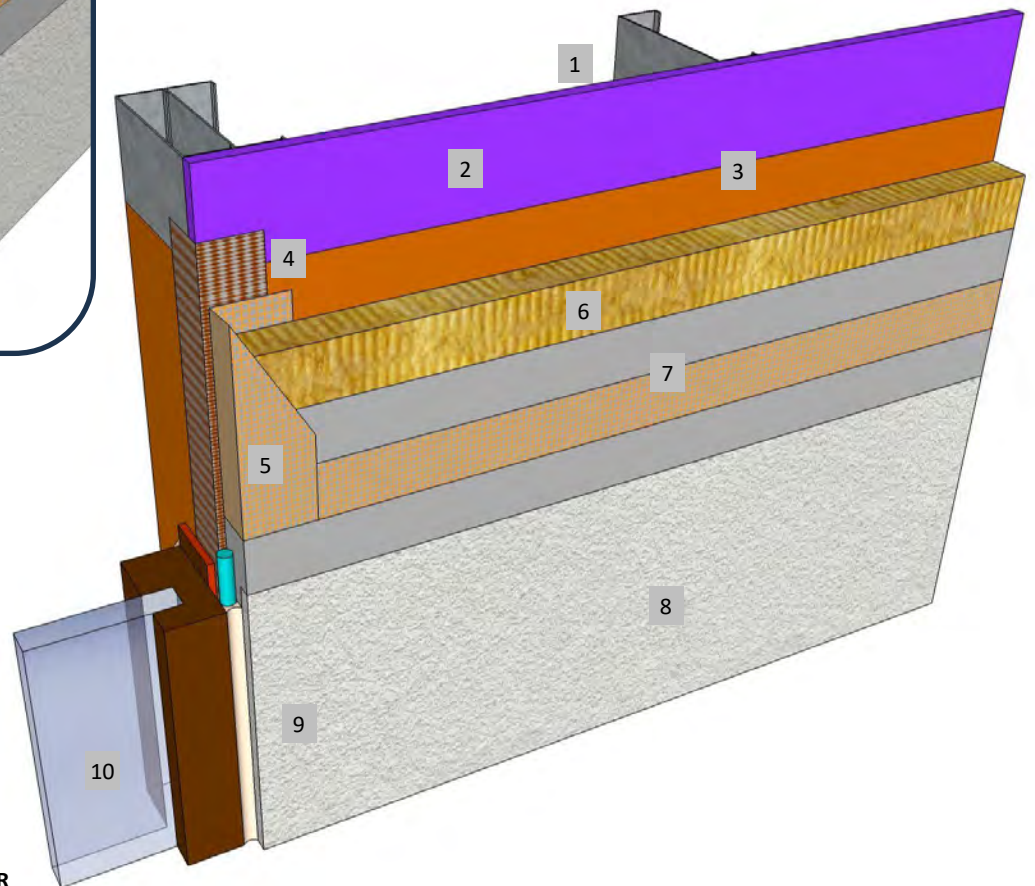
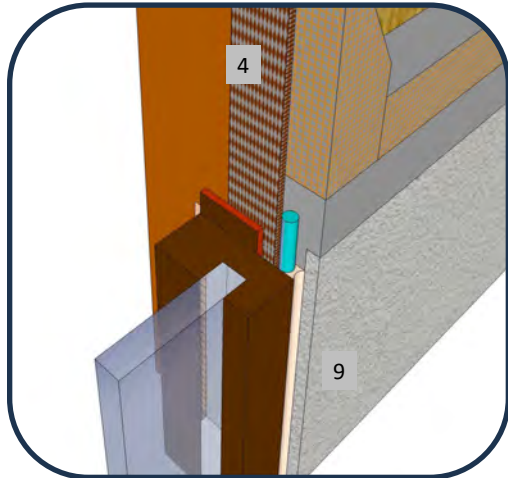




Master Wall Inc.
Building a Culture of Excellence

**ROLLERSHIELD DRAINAGE
CIFS® TYPE MW**

SYSTEM DETAIL



1. FRAMING
2. APPROVED SUBSTRATE
3. ROLLERSHIELD AIR/WATER BARRIER
4. SUPERIORSHIELD FLASHING TAPE WRAPPED INTO OPENING
5. BACKWRAPPED CIFS® SHOWN, EIFS PLASTIC ACCESSORIES ARE OPTIONAL
6. MINERAL WOOL INSULATION BOARD ADHERED WITH CHANNELED ADHESIVE
7. MASTER WALL BASE COAT AND MESH
8. SUPERIOR FINISH
9. 1/2" (12.7 MM) MIN. JAMB SEALANT JOINT & BACKER ROD ENDS UNDER FLASHING
10. STOREFRONT WINDOW

RDCIFSMW-12 TYPICAL STOREFRONT WINDOW JAMB



PO Box 397 · Fortson · GA · 31808 · 800-755-0825 · masterwall.com

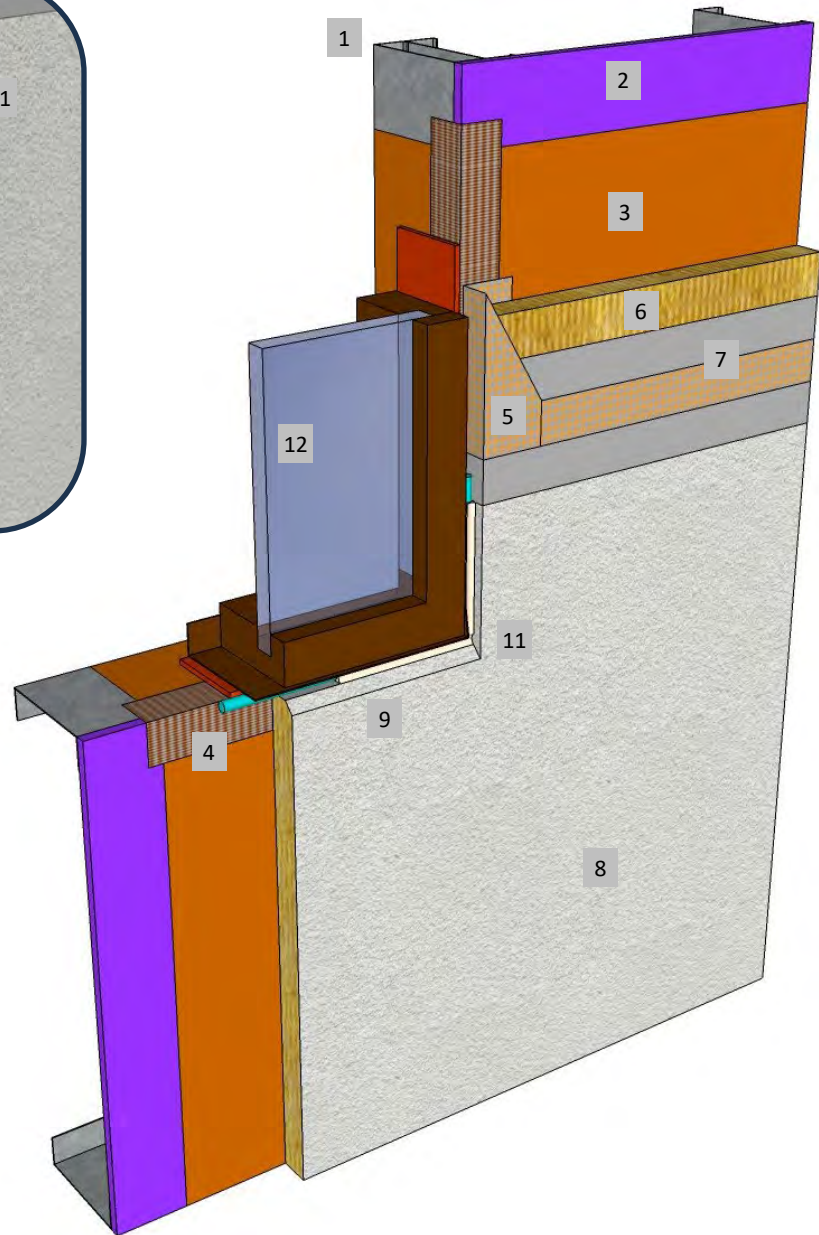
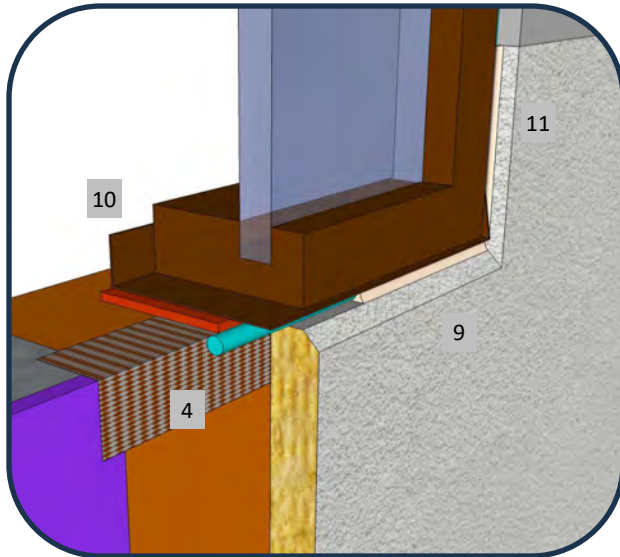
These drawings relay the conceptual conditions of Master Wall® Systems and are not the construction drawings. Ultimately the design and detailing of an entire wall system is the responsibility of a professional. These details will guide the design professional in the use of Master Wall® Products. Master Wall disclaims design, warranty or construction intent or responsibility. Bold or Brand Name = Master Wall® Product. ©2025 Master Wall Inc.®



Master Wall Inc.
Building a Culture of Excellence

**ROLLERSHIELD DRAINAGE
CIFS® TYPE MW**

SYSTEM DETAIL



1. FRAMING
2. APPROVED SUBSTRATE
3. ROLLERSHIELD AIR/WATER BARRIER
4. SUPERIORSHIELD FLASHING TAPE INTO OPENING
5. BACKWRAPPED CIFS® SHOWN, EIFS PLASTIC ACCESSORIES ARE OPTIONAL.
6. MINERAL WOOL INSULATION BOARD ADHERED WITH CHANNELED ADHESIVE
7. MASTER WALL BASE COAT AND MESH
8. SUPERIOR FINISH
9. SLOPE SILLS, 1:2 RECOMMENDED
10. SILL PAN (IF REQUIRED) NOTE: IF SILL PAN DESIGN EXTENDS OVER EIFS IT SHOULD RUN DOWN FACE 2" (51 MM) MIN. WITH LOWER EDGE SEALED
11. 1/2" (12.7 MM) MIN. JAMB SEALANT JOINT & BACKER ROD
12. STOREFRONT WINDOW

RDCIFSMW-13 TYPICAL STOREFRONT WINDOW SILL



PO Box 397 · Fortson · GA · 31808 · 800-755-0825 · masterwall.com

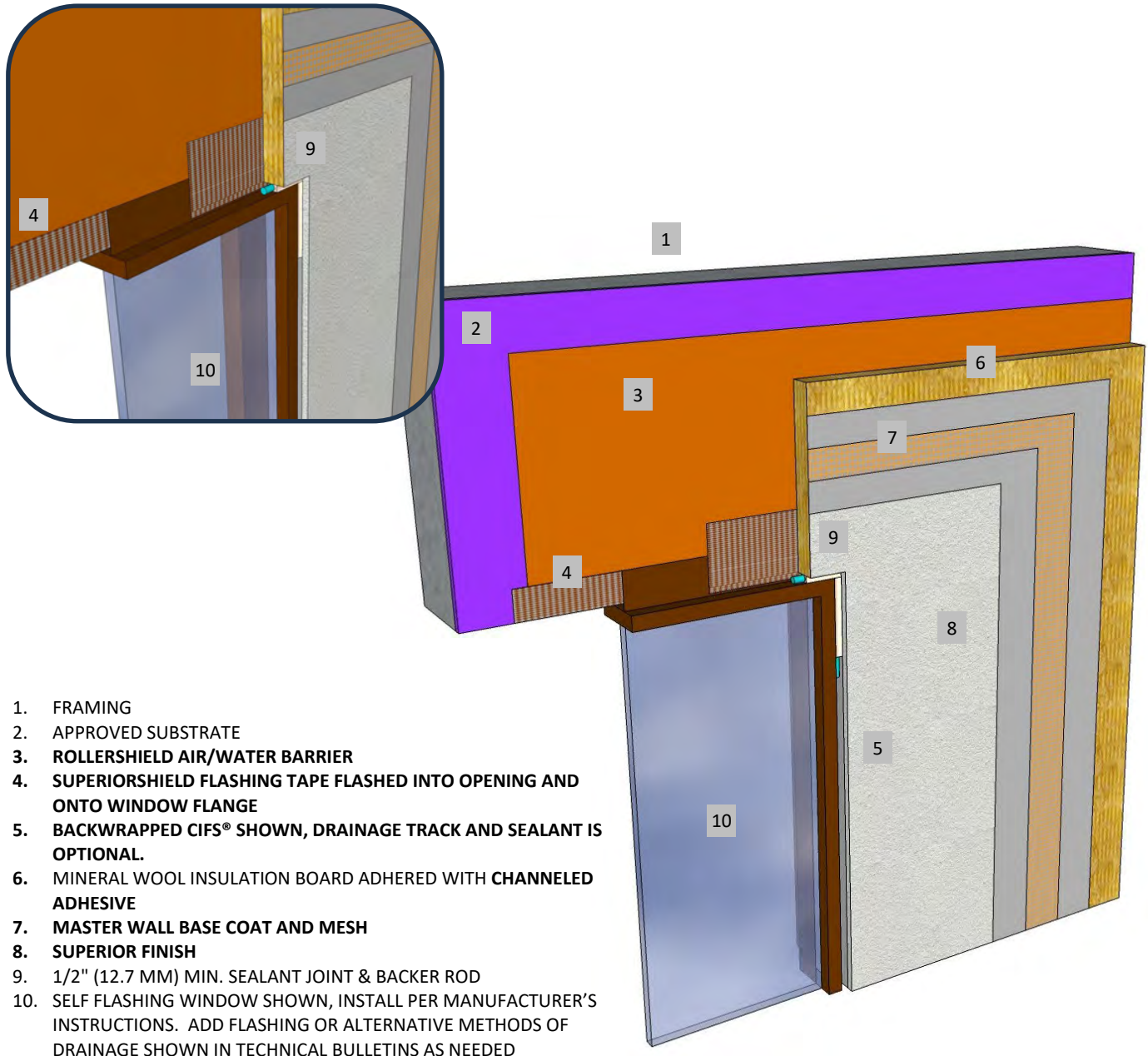
These drawings relay the conceptual conditions of Master Wall® Systems and are not the construction drawings. Ultimately the design and detailing of an entire wall system is the responsibility of a professional. These details will guide the design professional in the use of Master Wall® Products. Master Wall disclaims design, warranty or construction intent or responsibility. Bold or Brand Name = Master Wall® Product. ©2025 Master Wall Inc.®



Master Wall Inc.
Building a Culture of Excellence

**ROLLERSHIELD DRAINAGE
CIFS® TYPE MW**

SYSTEM DETAIL



1. FRAMING
2. APPROVED SUBSTRATE
3. ROLLERSHIELD AIR/WATER BARRIER
4. SUPERIORSHIELD FLASHING TAPE FLASHED INTO OPENING AND ONTO WINDOW FLANGE
5. BACKWRAPPED CIFS® SHOWN, DRAINAGE TRACK AND SEALANT IS OPTIONAL.
6. MINERAL WOOL INSULATION BOARD ADHERED WITH CHANNELED ADHESIVE
7. MASTER WALL BASE COAT AND MESH
8. SUPERIOR FINISH
9. 1/2" (12.7 MM) MIN. SEALANT JOINT & BACKER ROD
10. SELF FLASHING WINDOW SHOWN, INSTALL PER MANUFACTURER'S INSTRUCTIONS. ADD FLASHING OR ALTERNATIVE METHODS OF DRAINAGE SHOWN IN TECHNICAL BULLETINS AS NEEDED

RDCIFSMW-14 TYPICAL SELF-FLASHING FLANGED WINDOW HEAD

M Master Wall Inc.
Building a Culture of Excellence

PO Box 397 · Fortson · GA · 31808 · 800-755-0825 · masterwall.com

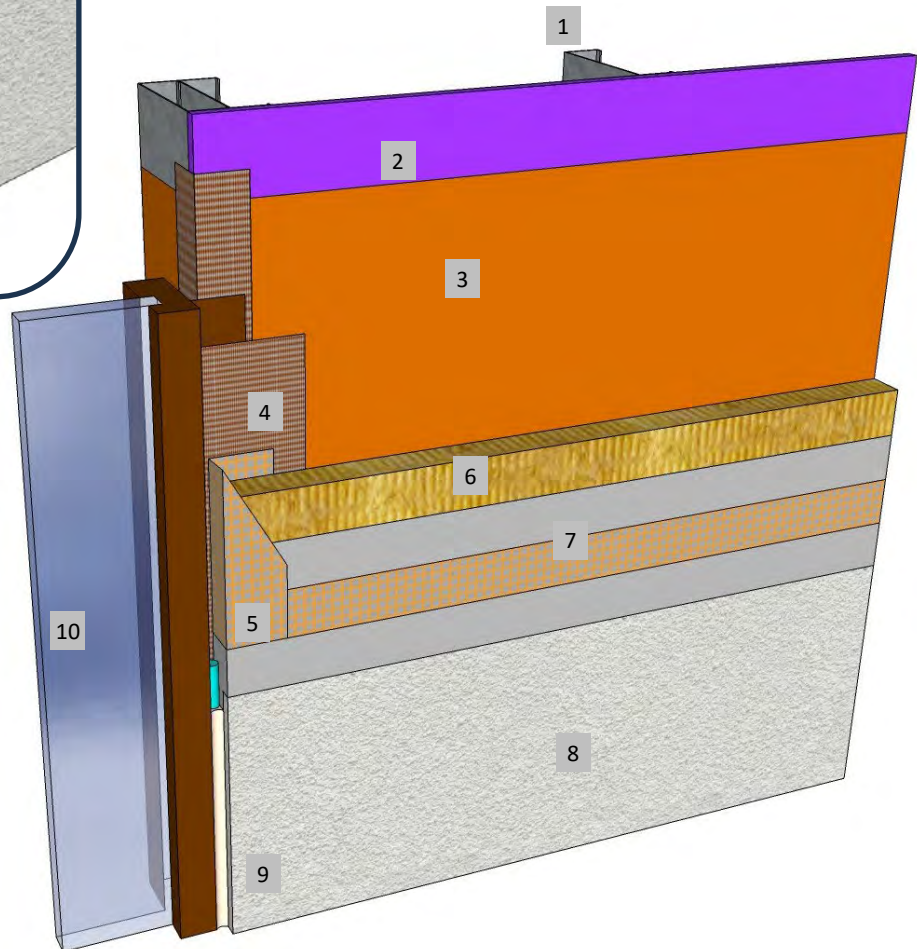
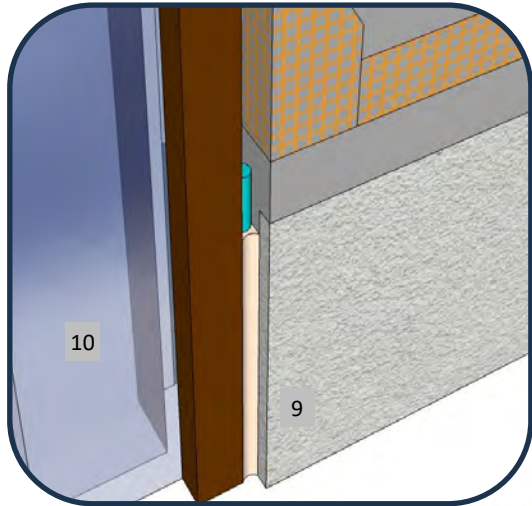
These drawings relay the conceptual conditions of Master Wall® Systems and are not the construction drawings. Ultimately the design and detailing of an entire wall system is the responsibility of a professional. These details will guide the design professional in the use of Master Wall® Products. Master Wall disclaims design, warranty or construction intent or responsibility. Bold or Brand Name = Master Wall® Product. ©2025 Master Wall Inc.®



Master Wall Inc.
Building a Culture of Excellence

**ROLLERSHIELD DRAINAGE
CIFS® TYPE MW**

SYSTEM DETAIL



1. FRAMING
2. APPROVED SUBSTRATE
3. **ROLLERSHIELD AIR/WATER BARRIER**
4. **SUPERIORSHIELD FLASHING TAPE
FLASHED INTO OPENING AND ONTO
WINDOW FLANGE**
5. **BACKWRAPPED CIFS® SHOWN, CASING
BEAD IS OPTIONAL.**
6. MINERAL WOOL INSULATION BOARD
ADHERED WITH **CHANNELED ADHESIVE**
7. **MASTER WALL BASE COAT AND MESH**
8. **SUPERIOR FINISH**
9. 1/2" (12.7 MM) MIN. SEALANT JOINT &
BACKER ROD
10. SELF FLASHING WINDOW SHOWN,
INSTALL PER MANUFACTURER'S
INSTRUCTIONS.

RDCIFSMW-15 FLANGED WINDOW JAMB

M Master Wall Inc.
Building a Culture of Excellence

PO Box 397 · Fortson · GA · 31808 · 800-755-0825 · masterwall.com

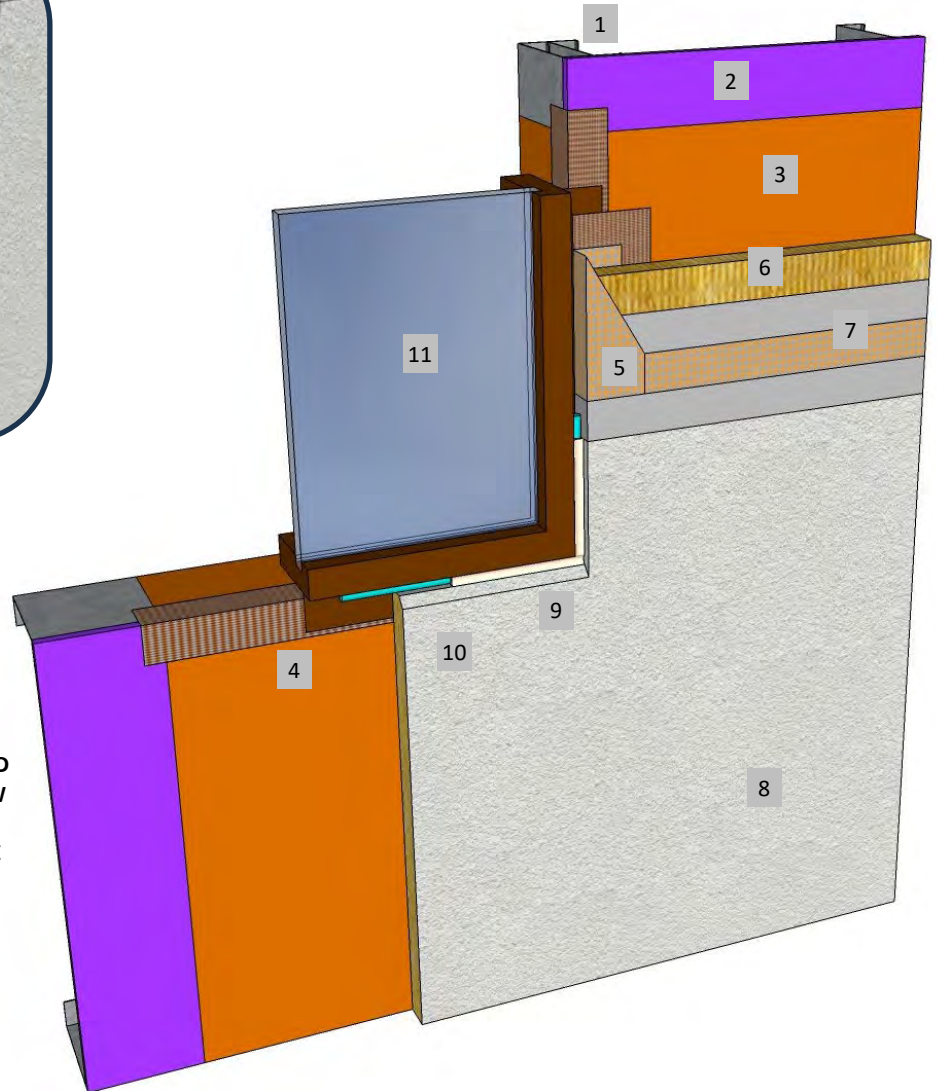
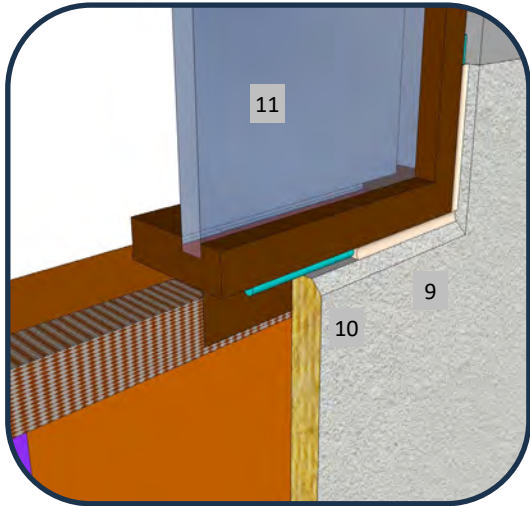
These drawings relay the conceptual conditions of Master Wall® Systems and are not the construction drawings. Ultimately the design and detailing of an entire wall system is the responsibility of a professional. These details will guide the design professional in the use of Master Wall® Products. Master Wall disclaims design, warranty or construction intent or responsibility. Bold or Brand Name = Master Wall® Product. ©2025 Master Wall Inc.®



Master Wall Inc.
Building a Culture of Excellence

**ROLLERSHIELD DRAINAGE
CIFS® TYPE MW**

SYSTEM DETAIL



1. FRAMING
2. APPROVED SUBSTRATE
3. ROLLERSHIELD AIR/WATER BARRIER
4. SUPERIORSHIELD FLASHING TAPE FLASHED INTO OPENING, POSSIBLY ONTO WINDOW FLANGE
5. BACKWRAPPED CIFS® SHOWN, DRAINAGE TRACK IS OPTIONAL.
6. MINERAL WOOL INSULATION BOARD ADHERED WITH CHANNELED ADHESIVE
7. MASTER WALL BASE COAT AND MESH
8. SUPERIOR FINISH
9. 1/2" (12.7 MM) MIN. SEALANT JOINT & BACKER ROD
10. SLOPE EXPOSED WINDOW SILL 1:2 MIN. RECOMMENDED
11. SELF FLASHING WINDOW SHOWN, INSTALL PER MANUFACTURER'S INSTRUCTIONS.

RDCIFSMW-16 TYPICAL FLANGED WINDOW SILL

M Master Wall Inc.
Building a Culture of Excellence

PO Box 397 · Fortson · GA · 31808 · 800-755-0825 · masterwall.com

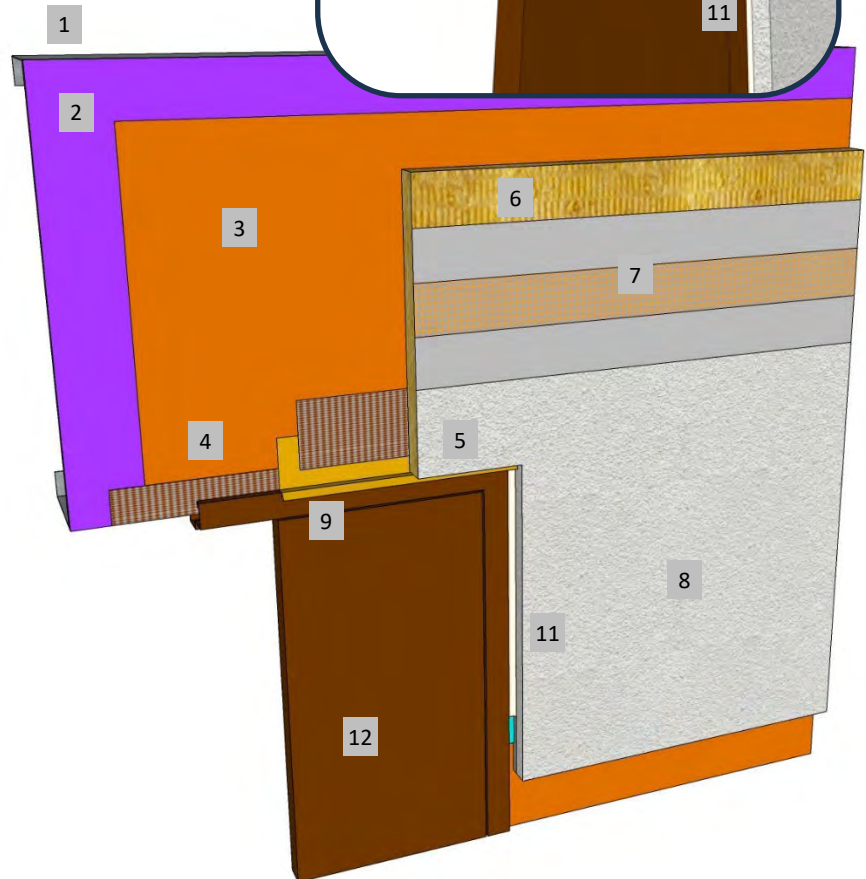
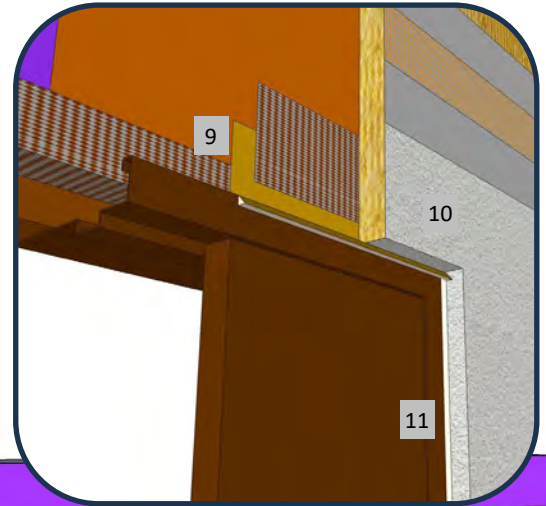
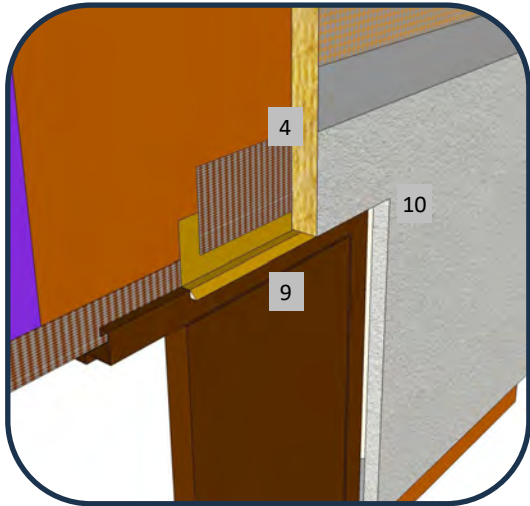
These drawings relay the conceptual conditions of Master Wall® Systems and are not the construction drawings. Ultimately the design and detailing of an entire wall system is the responsibility of a professional. These details will guide the design professional in the use of Master Wall® Products. Master Wall disclaims design, warranty or construction intent or responsibility. Bold or Brand Name = Master Wall® Product. ©2025 Master Wall Inc.®



Master Wall Inc.
Building a Culture of Excellence

**ROLLERSHIELD DRAINAGE
CIFS® TYPE MW**

SYSTEM DETAIL



1. FRAMING
2. APPROVED SUBSTRATE
3. ROLLERSHIELD AIR/WATER BARRIER
4. SUPERIORSHIELD FLASHING TAPE FLASHED INTO OPENING AND ONTO DOOR FLASHING
5. BACKWRAPPED CIFS® SHOWN, DRAINAGE TRACK WITH SEALANT IS OPTIONAL.
6. MINERAL WOOL INSULATION BOARD ADHERED WITH CHANNELED ADHESIVE
7. MASTER WALL BASE COAT AND MESH
8. SUPERIOR FINISH
9. HEAD FLASHING, EXTENDED 1/2" (12.7 MM) BEYOND JAMBS WITH END DAM, SEAL FLASHING TO DOOR FRAME
10. KEEP CIFS® APPROX. 1/8" (3 MM) ABOVE HEAD FLASHING FOR DRAINAGE
11. 1/2" (12.7 MM) MIN. SEALANT JOINT & BACKER ROD @ JAMB
12. HOLLOW METAL DOOR SHOWN, INSTALL PER MANUFACTURER'S INSTRUCTIONS.

RDCIFSMW-17 TYPICAL HOLLOW METAL DOOR HEAD



PO Box 397 · Fortson · GA · 31808 · 800-755-0825 · masterwall.com

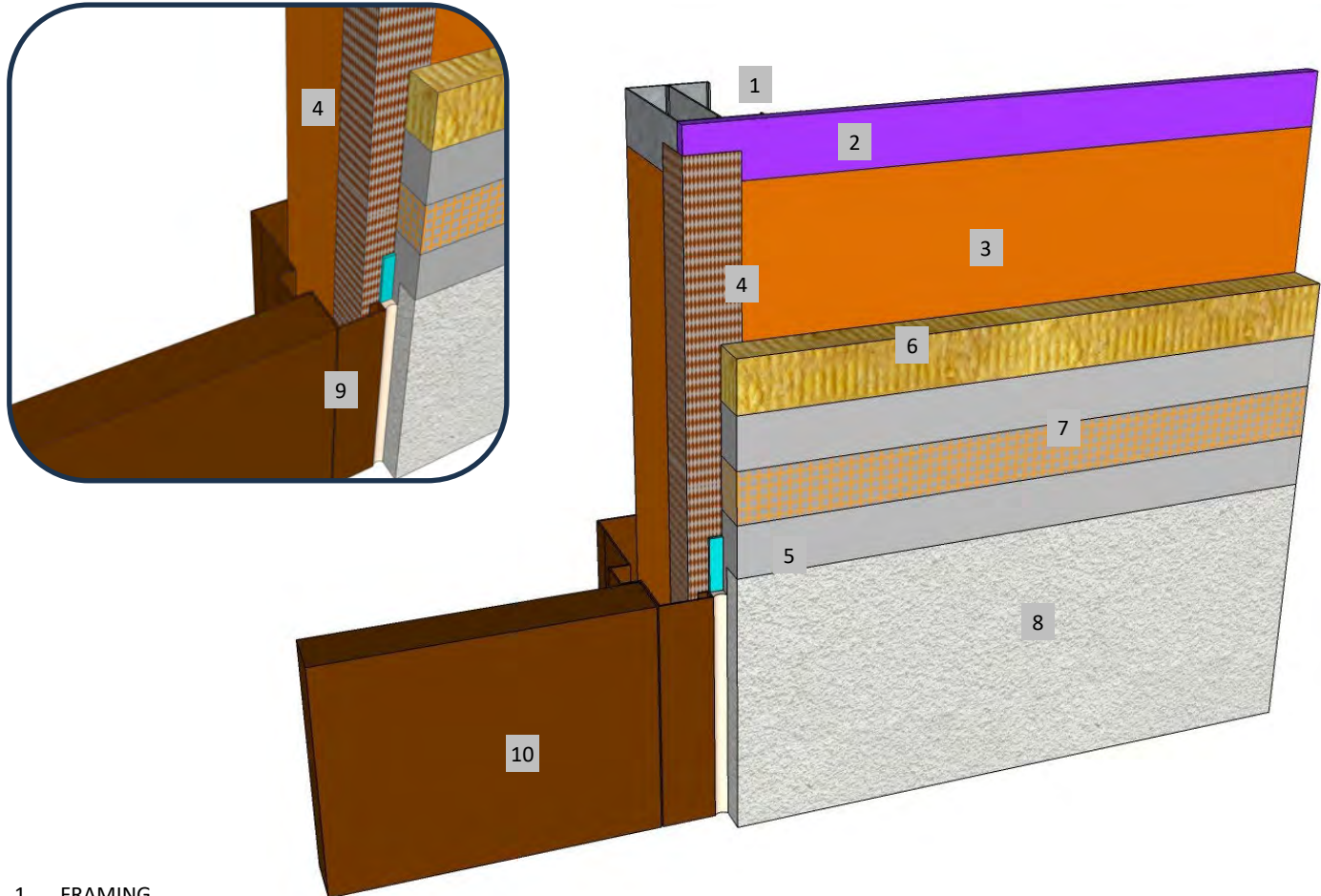
These drawings relay the conceptual conditions of Master Wall® Systems and are not the construction drawings. Ultimately the design and detailing of an entire wall system is the responsibility of a professional. These details will guide the design professional in the use of Master Wall® Products. Master Wall disclaims design, warranty or construction intent or responsibility. Bold or Brand Name = Master Wall® Product. ©2025 Master Wall Inc.®



Master Wall Inc.
Building a Culture of Excellence

**ROLLERSHIELD DRAINAGE
CIFS® TYPE MW**

SYSTEM DETAIL



1. FRAMING
2. APPROVED SUBSTRATE
3. **ROLLERSHIELD AIR/WATER BARRIER**
4. **SUPERIORSHIELD FLASHING TAPE FLASHED INTO OPENING AND ONTO DOOR FLASHING**
5. **BACKWRAPPED CIFS® SHOWN, CASING BEAD IS OPTIONAL.**
6. MINERAL WOOL INSULATION BOARD ADHERED WITH **CHANNELED ADHESIVE**
7. **MASTER WALL BASE COAT AND MESH**
8. **SUPERIOR FINISH**
9. 1/2" (12.7 MM) MIN. SEALANT JOINT & BACKER ROD
10. HOLLOW METAL DOOR SHOWN, INSTALL PER MANUFACTURER'S INSTRUCTIONS.

RDCIFSMW-18 TYPICAL HOLLOW METAL DOOR JAMB



Master Wall Inc.
Building a Culture of Excellence

PO Box 397 · Fortson · GA · 31808 · 800-755-0825 · masterwall.com

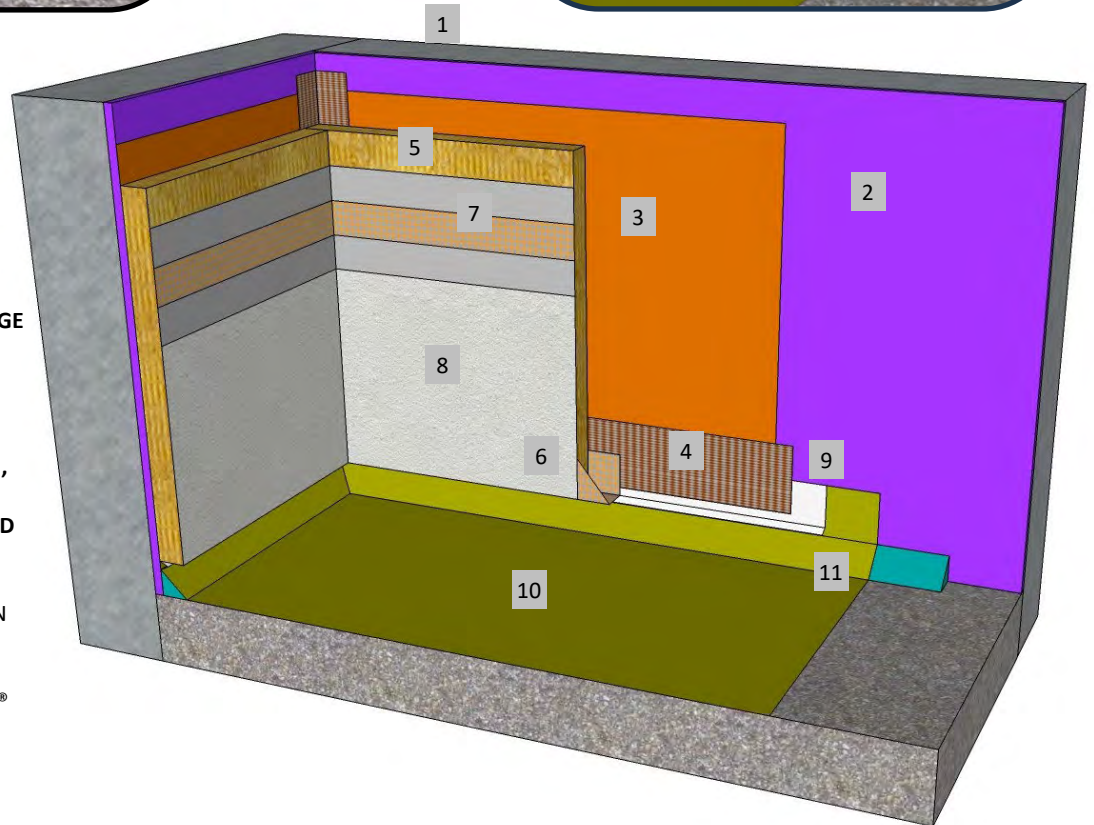
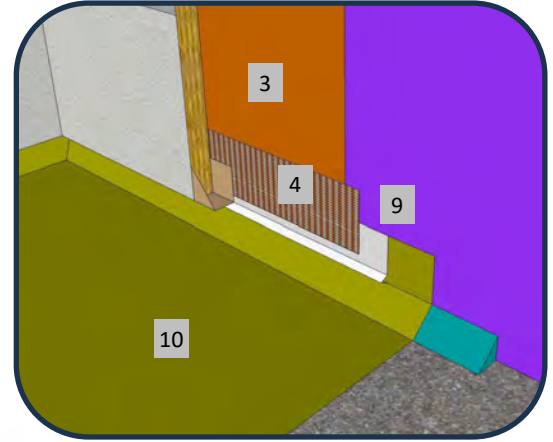
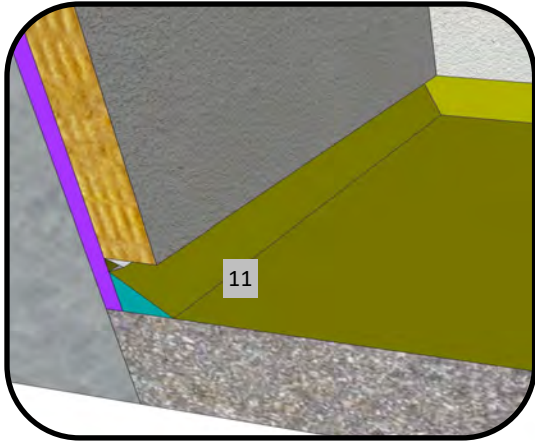
These drawings relay the conceptual conditions of Master Wall® Systems and are not the construction drawings. Ultimately the design and detailing of an entire wall system is the responsibility of a professional. These details will guide the design professional in the use of Master Wall® Products. Master Wall disclaims design, warranty or construction intent or responsibility. Bold or Brand Name = Master Wall® Product. ©2025 Master Wall Inc.®



Master Wall Inc.
Building a Culture of Excellence

**ROLLERSHIELD DRAINAGE
CIFS® TYPE MW**

SYSTEM DETAIL



1. FRAMING
2. APPROVED SUBSTRATE
3. ROLLERSHIELD AIR/WATER BARRIER
4. SUPERIORSHIELD FLASHING TAPE FLASHED ONTO DRAINAGE ACCESSORY
5. MINERAL WOOL INSULATION BOARD ADHERED WITH CHanneled ADHESIVE
6. BACKWRAPPED CIFS® SHOWN, CASING BEAD IS OPTIONAL.
7. MASTER WALL BASE COAT AND MESH
8. SUPERIOR FINISH
9. DRAINAGE ACCESSORY OPTION (SEE DETAILS)
10. WATERPROOF TOPPING
11. RECOMMENDED TO KEEP CIFS® MIN. 3/4" (19 MM) ABOVE WATERPROOFING

RDCIFSMW-19 DECK FLASHING TERMINATION

M Master Wall Inc.
Building a Culture of Excellence

PO Box 397 · Fortson · GA · 31808 · 800-755-0825 · masterwall.com

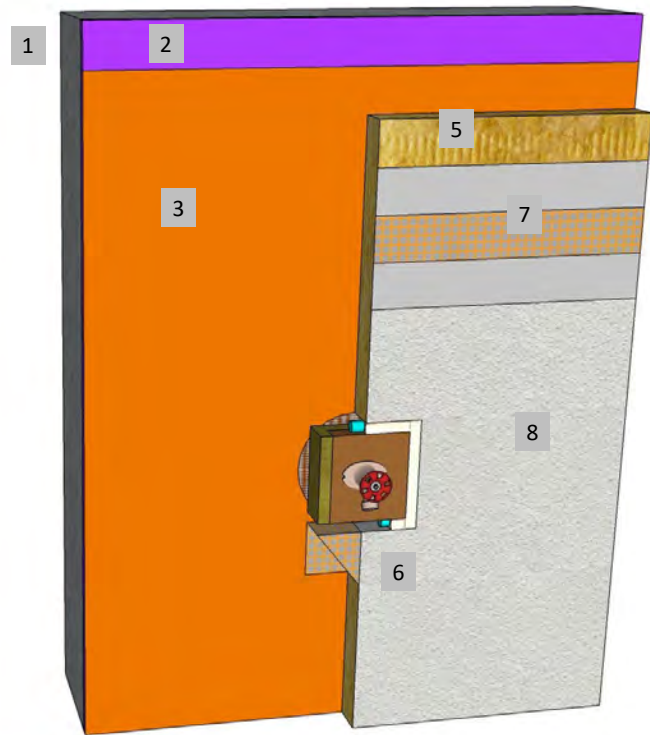
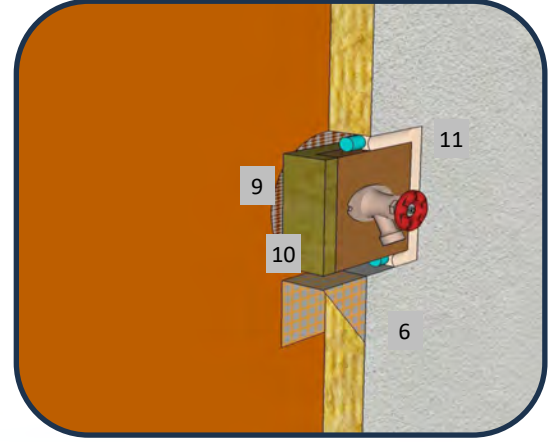
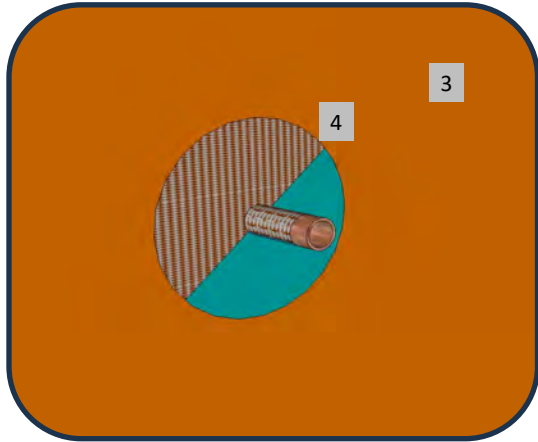
These drawings relay the conceptual conditions of Master Wall® Systems and are not the construction drawings. Ultimately the design and detailing of an entire wall system is the responsibility of a professional. These details will guide the design professional in the use of Master Wall® Products. Master Wall disclaims design, warranty or construction intent or responsibility. Bold or Brand Name = Master Wall® Product. ©2025 Master Wall Inc.®



Master Wall Inc.
Building a Culture of Excellence

**ROLLERSHIELD DRAINAGE
CIFS® TYPE MW**

SYSTEM DETAIL



1. FRAMING
2. APPROVED SUBSTRATE
3. **ROLLERSHIELD AIR/WATER BARRIER**
4. **SUPERIORFLASH OR SUPERIORSHIELD FLASHING TAPE AROUND PIPE PENETRATION**
5. MINERAL WOOL INSULATION BOARD ADHERED WITH CHANNELED ADHESIVE
6. **BACKWRAPPED CIFS® SHOWN, CASING BEAD IS OPTIONAL.**
7. **MASTER WALL BASE COAT AND MESH**
8. **SUPERIOR FINISH**
9. WOOD BLOCKING
10. METAL CLOSURE
11. 1/2" (12.7 MM) MIN. SEALANT JOINT

RDCIFSMW-20 TYPICAL PLUMBING SPIGOT DETAIL

M Master Wall Inc.
Building a Culture of Excellence

PO Box 397 · Fortson · GA · 31808 · 800-755-0825 · masterwall.com

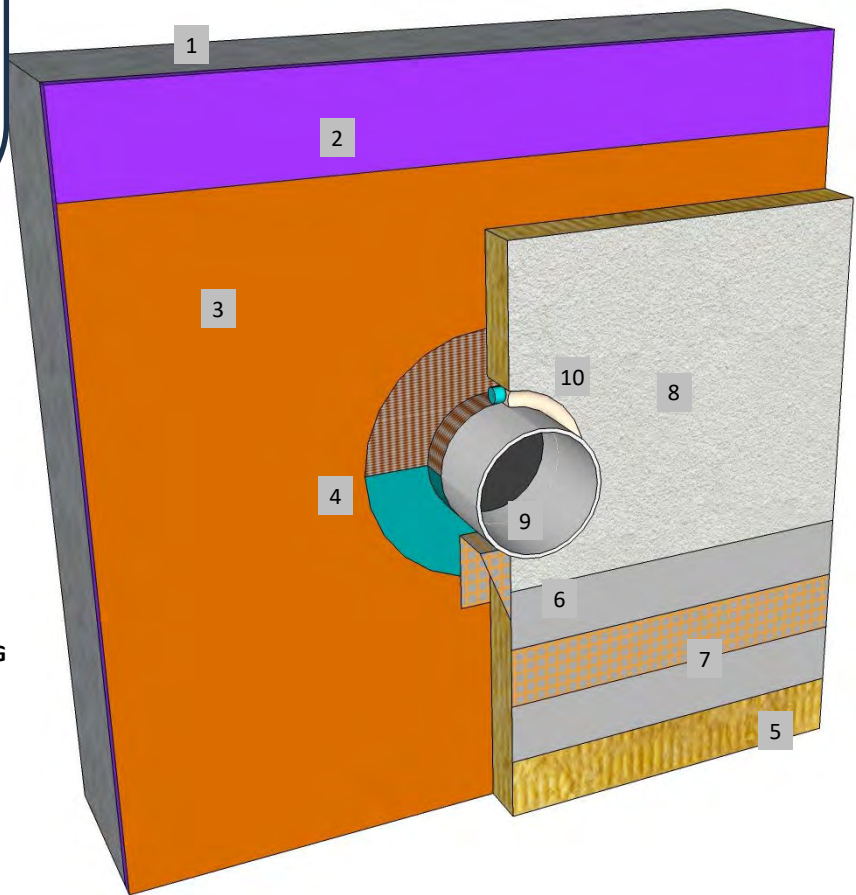
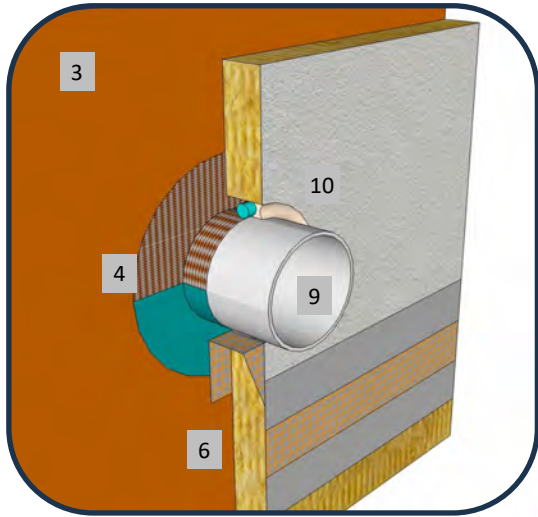
These drawings relay the conceptual conditions of Master Wall® Systems and are not the construction drawings. Ultimately the design and detailing of an entire wall system is the responsibility of a professional. These details will guide the design professional in the use of Master Wall® Products. Master Wall disclaims design, warranty or construction intent or responsibility. Bold or Brand Name = Master Wall® Product. ©2025 Master Wall Inc.®



Master Wall Inc.
Building a Culture of Excellence

**ROLLERSHIELD DRAINAGE
CIFS® TYPE MW**

SYSTEM DETAIL



1. FRAMING
2. APPROVED SUBSTRATE
3. **ROLLERSHIELD AIR/WATER BARRIER**
4. **SUPERIORFLASH OR SUPERIORSHIELD FLASHING TAPE AROUND PIPE PENETRATION**
5. MINERAL WOOL INSULATION BOARD ADHERED WITH CHANNLED ADHESIVE
6. **BACKWRAPPED CIFS® SHOWN**
7. **MASTER WALL BASE COAT AND MESH**
8. **SUPERIOR FINISH**
9. PIPE PENETRATION
10. 1/2" (12.7 MM) MIN. SEALANT JOINT

RDCIFSMW-21 TYPICAL PIPE PENETRATION DETAIL

M Master Wall Inc.
Building a Culture of Excellence

PO Box 397 · Fortson · GA · 31808 · 800-755-0825 · masterwall.com

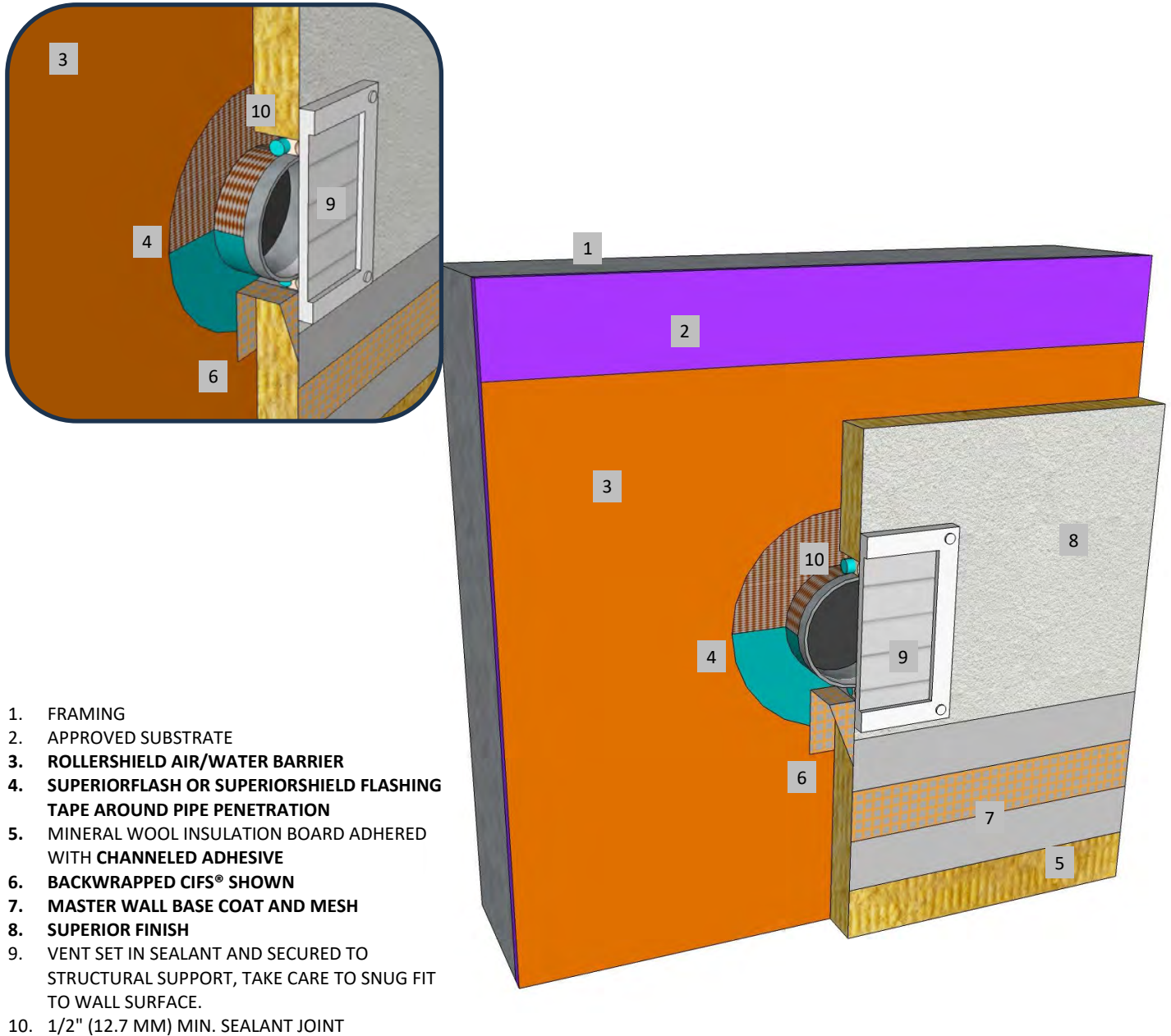
These drawings relay the conceptual conditions of Master Wall® Systems and are not the construction drawings. Ultimately the design and detailing of an entire wall system is the responsibility of a professional. These details will guide the design professional in the use of Master Wall® Products. Master Wall disclaims design, warranty or construction intent or responsibility. Bold or Brand Name = Master Wall® Product. ©2025 Master Wall Inc.®



Master Wall Inc.
Building a Culture of Excellence

**ROLLERSHIELD DRAINAGE
CIFS® TYPE MW**

SYSTEM DETAIL



1. FRAMING
2. APPROVED SUBSTRATE
3. **ROLLERSHIELD AIR/WATER BARRIER**
4. **SUPERIORFLASH OR SUPERIORSHIELD FLASHING TAPE AROUND PIPE PENETRATION**
5. MINERAL WOOL INSULATION BOARD ADHERED WITH CHANNELED ADHESIVE
6. **BACKWRAPPED CIFS® SHOWN**
7. **MASTER WALL BASE COAT AND MESH**
8. **SUPERIOR FINISH**
9. VENT SET IN SEALANT AND SECURED TO STRUCTURAL SUPPORT, TAKE CARE TO SNUG FIT TO WALL SURFACE.
10. 1/2" (12.7 MM) MIN. SEALANT JOINT

RDCIFSMW-22 TYPICAL DRYER VENT DETAIL

M Master Wall Inc.
Building a Culture of Excellence

PO Box 397 · Fortson · GA · 31808 · 800-755-0825 · masterwall.com

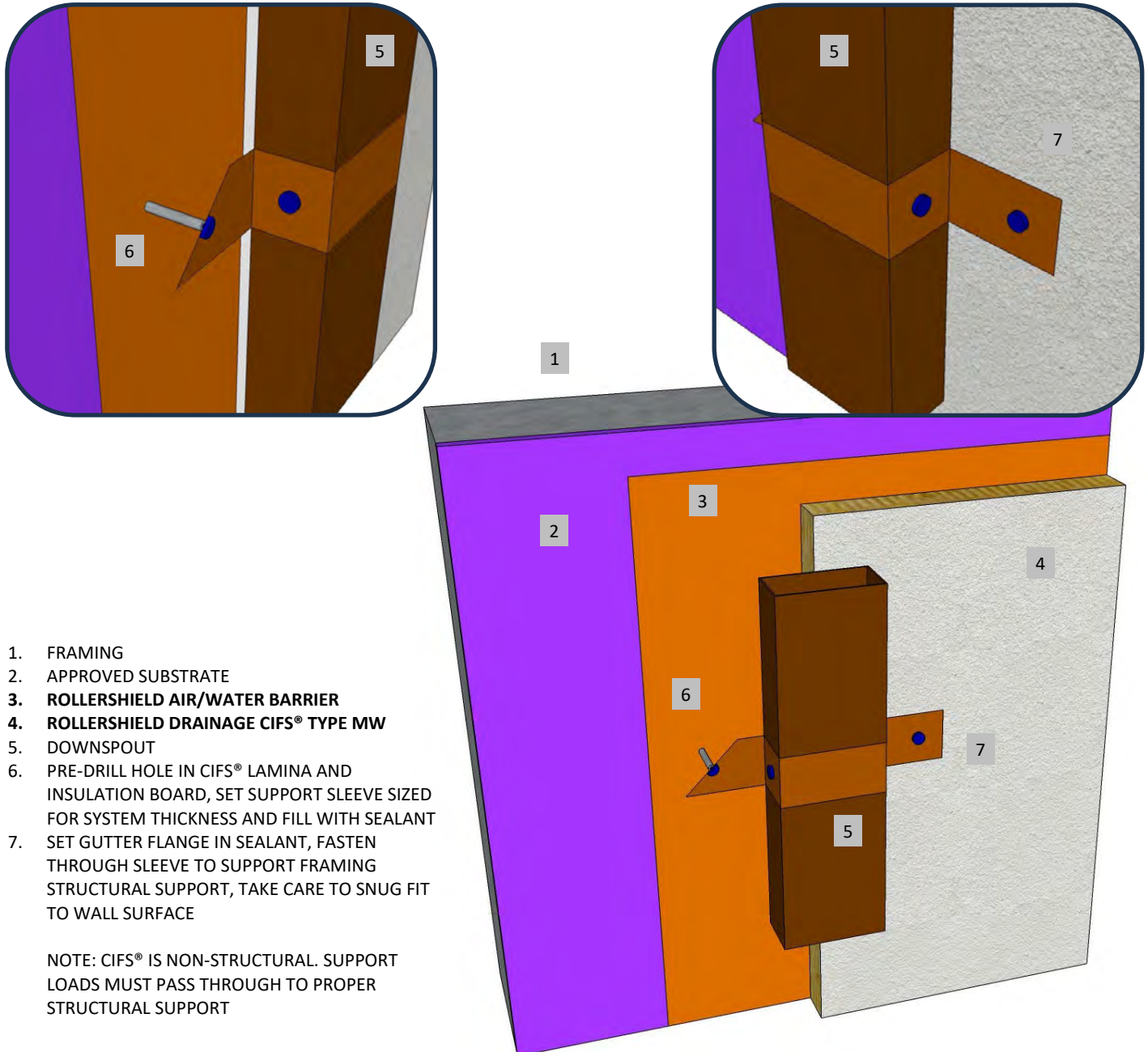
These drawings relay the conceptual conditions of Master Wall® Systems and are not the construction drawings. Ultimately the design and detailing of an entire wall system is the responsibility of a professional. These details will guide the design professional in the use of Master Wall® Products. Master Wall disclaims design, warranty or construction intent or responsibility. Bold or Brand Name = Master Wall® Product. ©2025 Master Wall Inc.®



Master Wall Inc.
Building a Culture of Excellence

**ROLLERSHIELD DRAINAGE
CIFS® TYPE MW**

SYSTEM DETAIL



1. FRAMING
2. APPROVED SUBSTRATE
3. **ROLLERSHIELD AIR/WATER BARRIER**
4. **ROLLERSHIELD DRAINAGE CIFS® TYPE MW**
5. DOWNSPOUT
6. PRE-DRILL HOLE IN CIFS® LAMINA AND INSULATION BOARD, SET SUPPORT SLEEVE SIZED FOR SYSTEM THICKNESS AND FILL WITH SEALANT
7. SET GUTTER FLANGE IN SEALANT, FASTEN THROUGH SLEEVE TO SUPPORT FRAMING STRUCTURAL SUPPORT, TAKE CARE TO SNUG FIT TO WALL SURFACE

NOTE: CIFS® IS NON-STRUCTURAL. SUPPORT LOADS MUST PASS THROUGH TO PROPER STRUCTURAL SUPPORT

RDCIFSMW-23 TYPICAL DOWNSPOUT ATTACHMENT

M Master Wall Inc.
Building a Culture of Excellence

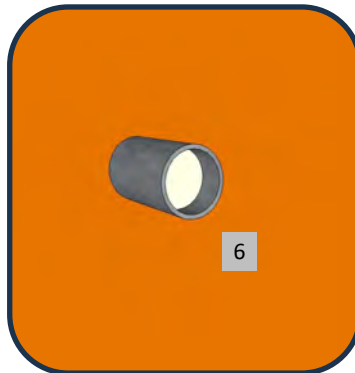
These drawings relay the conceptual conditions of Master Wall® Systems and are not the construction drawings. Ultimately the design and detailing of an entire wall system is the responsibility of a professional. These details will guide the design professional in the use of Master Wall® Products. Master Wall disclaims design, warranty or construction intent or responsibility. Bold or Brand Name = Master Wall® Product. ©2025 Master Wall Inc.®



Master Wall Inc.
Building a Culture of Excellence

**ROLLERSHIELD DRAINAGE
CIFS® TYPE MW**

SYSTEM DETAIL



1. FRAMING, SIGNAGE SUPPORT AND APPROVED SUBSTRATE
2. ROLLERSHIELD AIR/WATER BARRIER
3. ROLLERSHIELD DRAINAGE CIFS® TYPE MW
4. SIGNAGE
5. PRE-DRILL HOLE THE SIZE OF THE STRUCTURAL SLEEVE THROUGH CIFS® (NOT SHOWN) AND SUBSTRATE TO STRUCTURAL SUPPORT
6. INSERT STRUCTURAL SLEEVE SIZED FOR SUBSTRATE, INSULATION AND LAMINA THICKNESS AND FILL WITH SEALANT
7. SET OVERSIZE WASHER IN SEALANT
8. INSTALL A STRUCTURAL SPACER TO VENTILATE BEHIND THE SIGNAGE (APPROXIMATELY 1" OR 25 MM) AND FASTEN SIGNAGE TO THE STRUCTURAL SUPPORT

NOTE: CIFS® IS NON-STRUCTURAL. SUPPORT LOADS MUST PASS THROUGH TO PROPER STRUCTURAL SUPPORT

RDCIFSMW-24 TYPICAL SIGNAGE ATTACHMENT

M Master Wall Inc.
Building a Culture of Excellence

PO Box 397 · Fortson · GA · 31808 · 800-755-0825 · masterwall.com

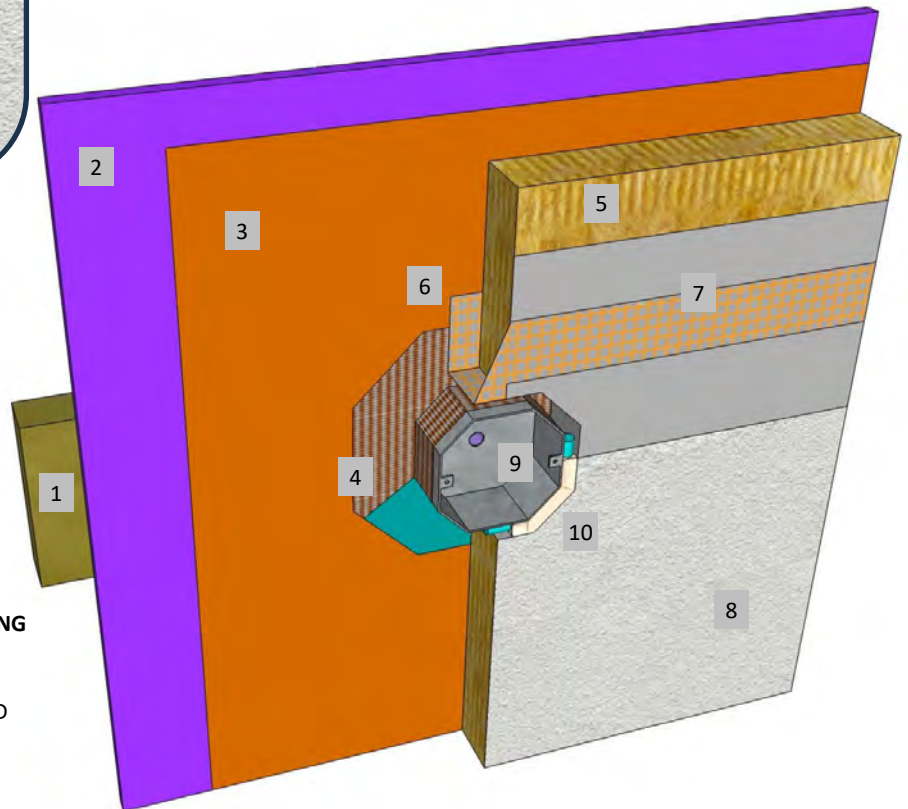
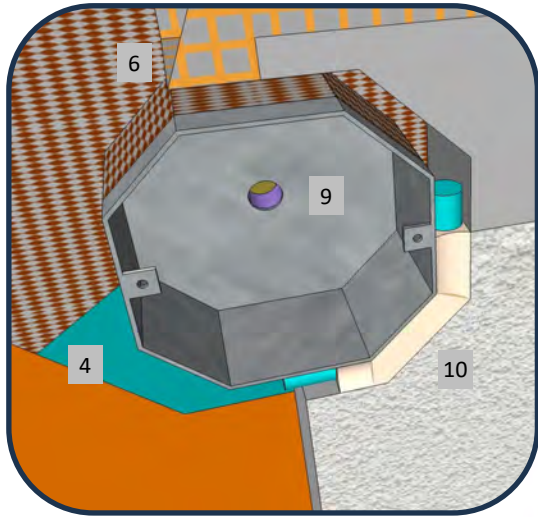
These drawings relay the conceptual conditions of Master Wall® Systems and are not the construction drawings. Ultimately the design and detailing of an entire wall system is the responsibility of a professional. These details will guide the design professional in the use of Master Wall® Products. Master Wall disclaims design, warranty or construction intent or responsibility. Bold or Brand Name = Master Wall® Product. ©2025 Master Wall Inc.®



Master Wall Inc.
Building a Culture of Excellence

**ROLLERSHIELD DRAINAGE
CIFS® TYPE MW**

SYSTEM DETAIL



1. FRAMING AND FIXTURE SUPPORT
2. APPROVED SUBSTRATE
3. **ROLLERSHIELD AIR/WATER BARRIER**
4. **SUPERIORFLASH OR SUPERIORSHIELD FLASHING TAPE AROUND WATERPROOF FIXTURE HOUSING**
5. MINERAL WOOL INSULATION BOARD ADHERED WITH CHANNELED ADHESIVE
6. **BACKWRAPPED CIFS® SHOWN**
7. **MASTER WALL BASE COAT AND MESH**
8. **SUPERIOR FINISH**
9. FIXTURE
10. 1/2" (12.7 MM) MIN. SEALANT JOINT

RDCIFSMW-25 TYPICAL FIXTURE ATTACHMENT



PO Box 397 · Fortson · GA · 31808 · 800-755-0825 · masterwall.com

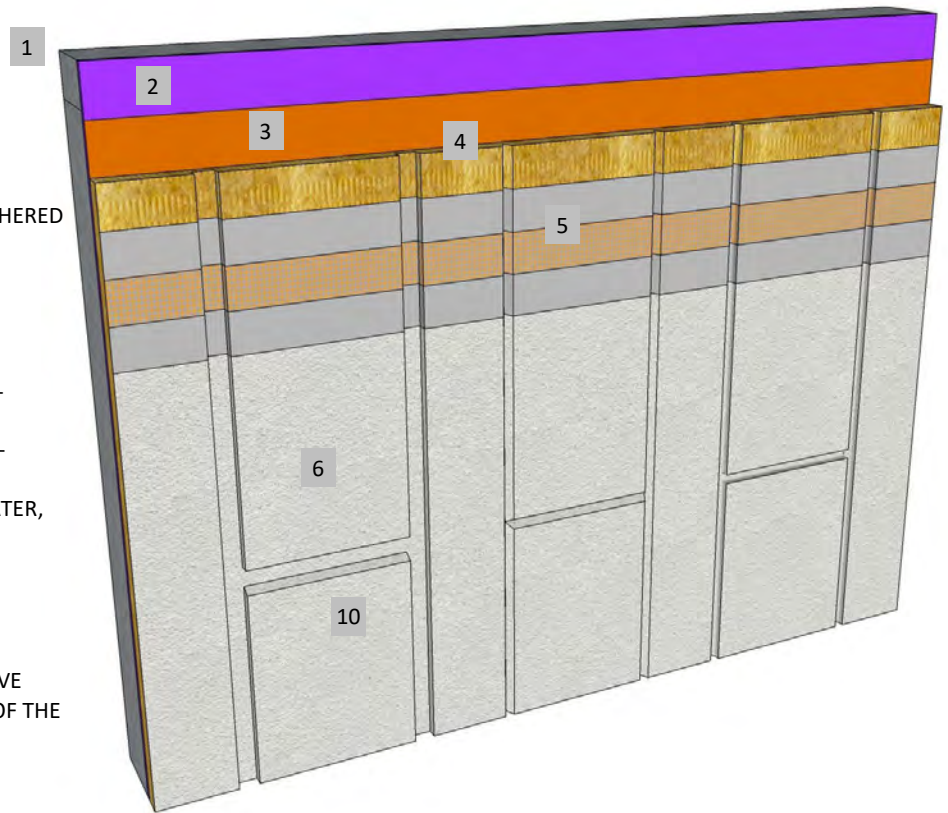
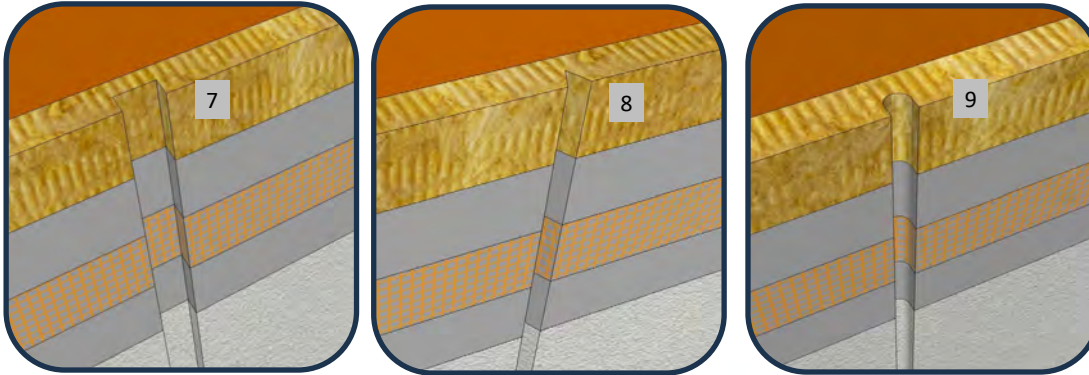
These drawings relay the conceptual conditions of Master Wall® Systems and are not the construction drawings. Ultimately the design and detailing of an entire wall system is the responsibility of a professional. These details will guide the design professional in the use of Master Wall® Products. Master Wall disclaims design, warranty or construction intent or responsibility. Bold or Brand Name = Master Wall® Product. ©2025 Master Wall Inc.®



Master Wall Inc.
Building a Culture of Excellence

**ROLLERSHIELD DRAINAGE
CIFS® TYPE MW**

SYSTEM DETAIL



1. FRAMING
2. APPROVED SUBSTRATE
3. **ROLLERSHIELD AIR/WATER BARRIER**
4. MINERAL WOOL INSULATION BOARD ADHERED WITH **CHANNELED ADHESIVE**
5. **MASTER WALL BASE COAT AND MESH**
6. **SUPERIOR FINISH**
7. 3/4" DEEP BY 1-1/2" WIDE (19 X 38 MM) SQUARE GROOVE SHOWN*
8. 3/4" DEEP BY 3/4" WIDE (19 X 19 MM) V-GROOVE SHOWN*
9. 3/4" DEEP BY 3/4" WIDE (19 X 19 MM) U-GROOVE SHOWN*
10. SLOPE HORIZONTAL JOINTS TO SHED WATER, 1:2 MIN. RECOMMENDED

*MAINTAIN 3/4" (19 MM) MINIMUM INSULATION THICKNESS UNDER JOINTS

NOTE: AESTHETIC JOINTS ARE DECORATIVE AND NOT A STRUCTURAL COMPONENT OF THE WALL SYSTEM

RDCIFSMW-26 TYPICAL AESTHETIC JOINTS

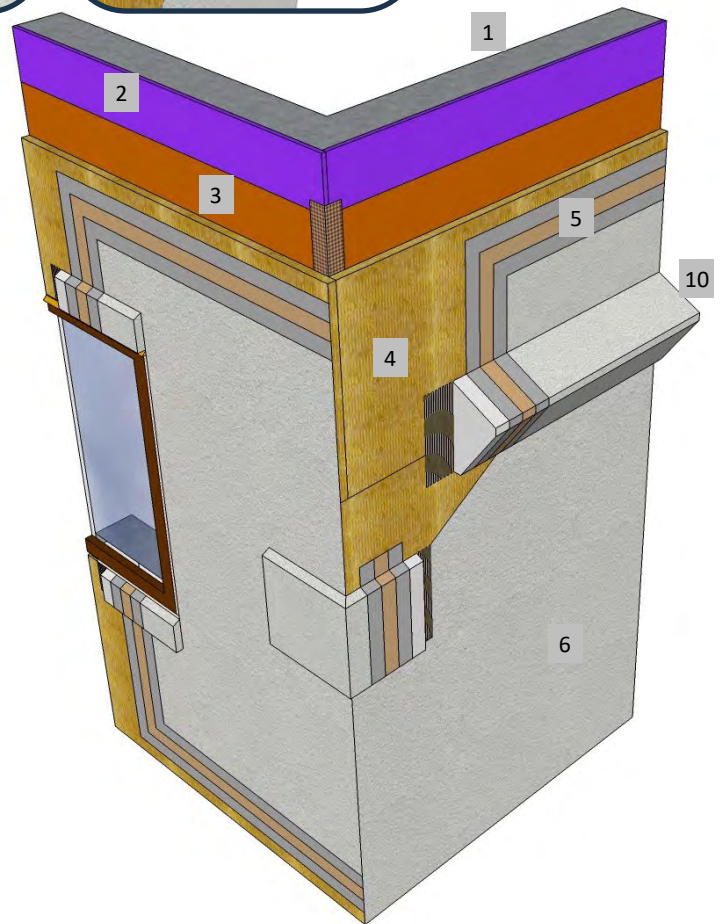
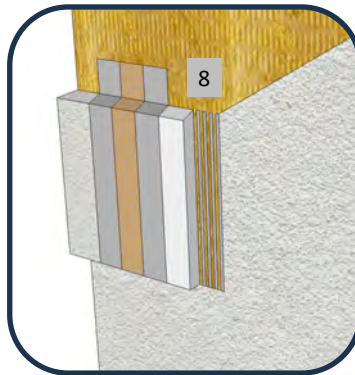
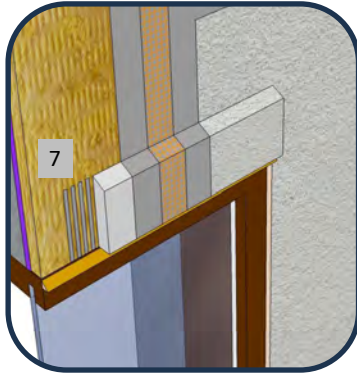




Master Wall Inc.
Building a Culture of Excellence

**ROLLERSHIELD DRAINAGE
CIFS® TYPE MW**

SYSTEM DETAIL



1. FRAMING
2. APPROVED SUBSTRATE
3. **ROLLERSHIELD AIR/WATER BARRIER**
4. MINERAL WOOL INSULATION BOARD ADHERED WITH **CHANNELED ADHESIVE**
5. **MASTER WALL BASE COAT AND MESH**
6. **SUPERIOR FINISH**
7. TRIM BAND AT WINDOW HEAD, ADHERE WITH MASTER WALL ADHESIVE
8. DECORATIVE QUOIN, ADHERE WITH MASTER WALL ADHESIVE
9. DECORATIVE BANDING, ADHERE WITH MASTER WALL ADHESIVE
10. SLOPE HORIZONTAL PROJECTIONS TO SHED WATER, 1:2 MIN. RECOMMENDED

NOTE: FOAM SHAPES COULD BE MADE OF MASTER WALL INSULATION BOARD IF ALLOWED BY THE PROJECT DESIGN

RDCIFSMW-27 TYPICAL AESTHETIC PROJECTION



PO Box 397 · Fortson · GA · 31808 · 800-755-0825 · masterwall.com

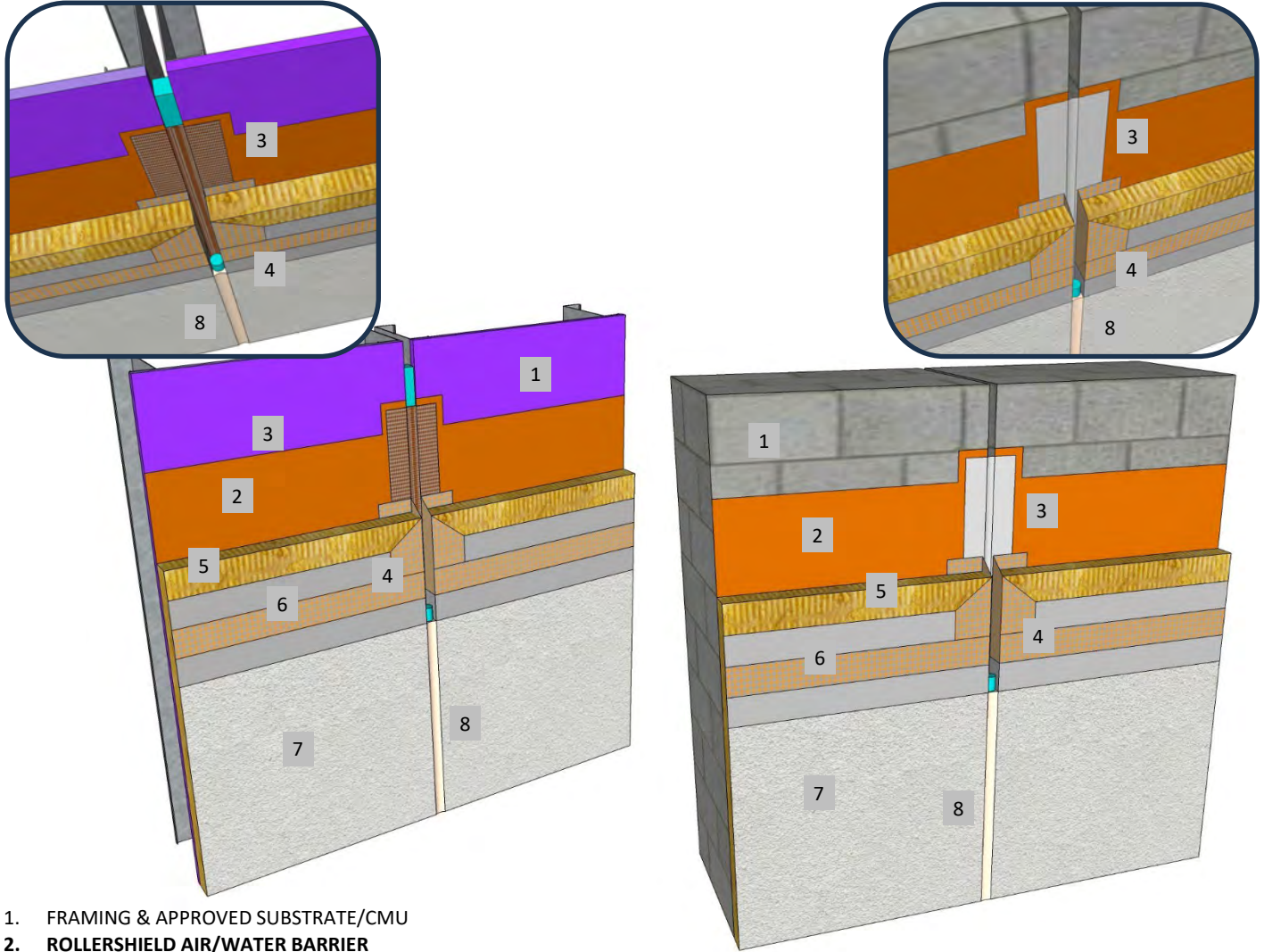
These drawings relay the conceptual conditions of Master Wall® Systems and are not the construction drawings. Ultimately the design and detailing of an entire wall system is the responsibility of a professional. These details will guide the design professional in the use of Master Wall® Products. Master Wall disclaims design, warranty or construction intent or responsibility. Bold or Brand Name = Master Wall® Product. ©2025 Master Wall Inc.®



Master Wall Inc.
Building a Culture of Excellence

**ROLLERSHIELD DRAINAGE
CIFS® TYPE MW**

SYSTEM DETAIL



1. FRAMING & APPROVED SUBSTRATE/CMU
2. ROLLERSHIELD AIR/WATER BARRIER
3. EXPANSION BRIDGE: SUPERIORSHIELD FLASHING TAPE/SUPERIORFLASH WITH BACKING OR WEATHERSTOP TAPE
4. BACKWRAPPED CIFS® SHOWN, EIFS PLASTIC ACCESSORIES ARE OPTIONAL
5. MINERAL WOOL INSULATION BOARD ADHERED WITH CHanneled ADHESIVE
6. MASTER WALL BASE COAT AND MESH
7. SUPERIOR FINISH
8. SEALANT JOINT SIZED FOR ANTICIPATED MOVEMENT, 3/4" (19 MM) MIN.

RDCIFSMW-28 VERTICAL EXPANSION JOINT



PO Box 397 · Fortson · GA · 31808 · 800-755-0825 · masterwall.com

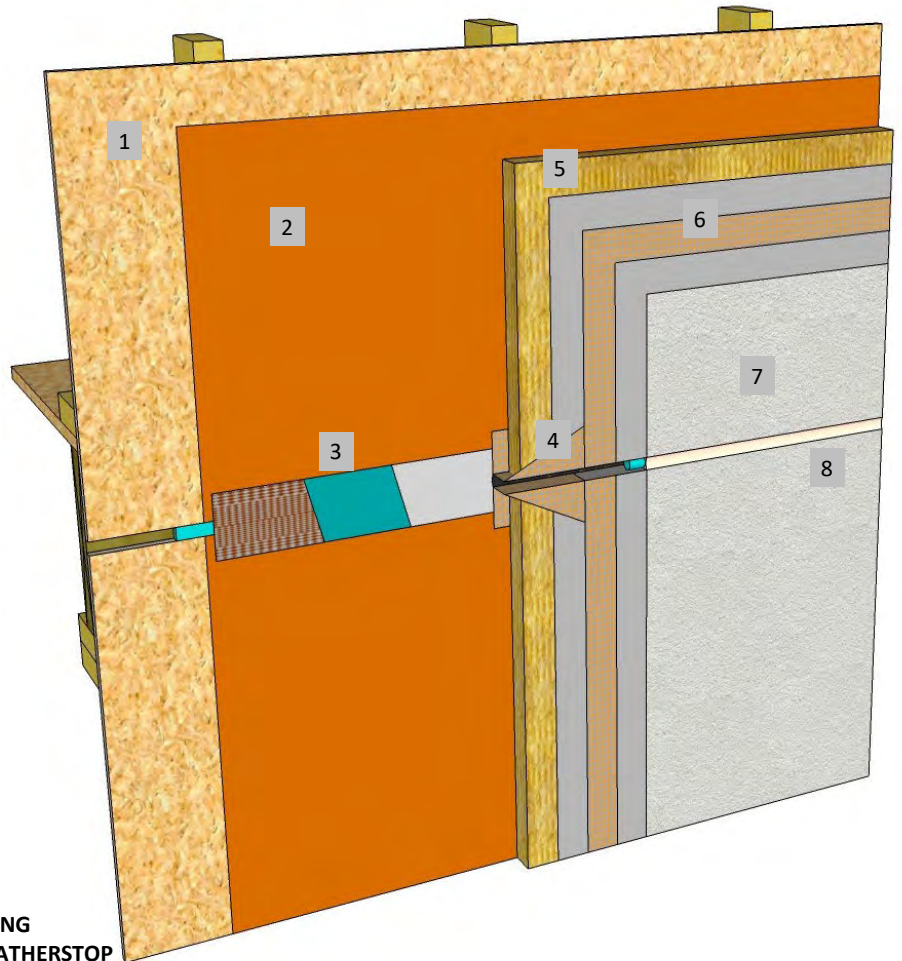
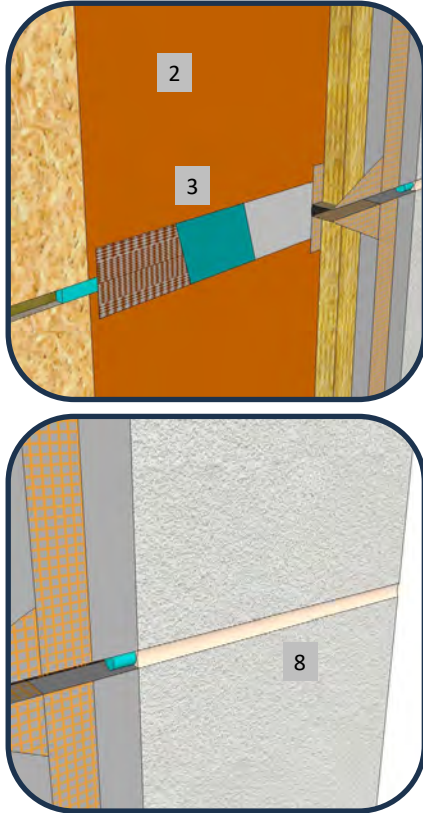
These drawings relay the conceptual conditions of Master Wall® Systems and are not the construction drawings. Ultimately the design and detailing of an entire wall system is the responsibility of a professional. These details will guide the design professional in the use of Master Wall® Products. Master Wall disclaims design, warranty or construction intent or responsibility. Bold or Brand Name = Master Wall® Product. ©2025 Master Wall Inc.®



Master Wall Inc.
Building a Culture of Excellence

**ROLLERSHIELD DRAINAGE
CIFS® TYPE MW**

SYSTEM DETAIL



1. FRAMING & APPROVED SUBSTRATE
2. ROLLERSHIELD AIR/WATER BARRIER
3. EXPANSION BRIDGE: SUPERIORSHIELD FLASHING TAPE/SUPERIORFLASH WITH BACKING OR WEATHERSTOP TAPE
4. BACKWRAPPED CIFS® SHOWN, EIFS PLASTIC ACCESSORIES ARE OPTIONAL
5. MINERAL WOOL INSULATION BOARD ADHERED WITH CHANNELED ADHESIVE
6. MASTER WALL BASE COAT AND MESH
7. SUPERIOR FINISH
8. SEALANT JOINT SIZED FOR ANTICIPATED MOVEMENT, 3/4" (19 MM) MIN.

NOTE: DETAIL NEEDED WHEN 2X FRAMING MEMBERS ARE USED AS FLOOR FRAMING DUE TO CROSS-GRAIN SHRINKAGE. LIKELY NOT NEEDED WITH ENGINEERED FRAMING (VERIFY WITH MFR. & SEE TECHNICAL BULLETIN)

RDCIFSMW-29 HORIZONTAL EXPANSION JOINT - WOOD FRAME



PO Box 397 · Fortson · GA · 31808 · 800-755-0825 · masterwall.com

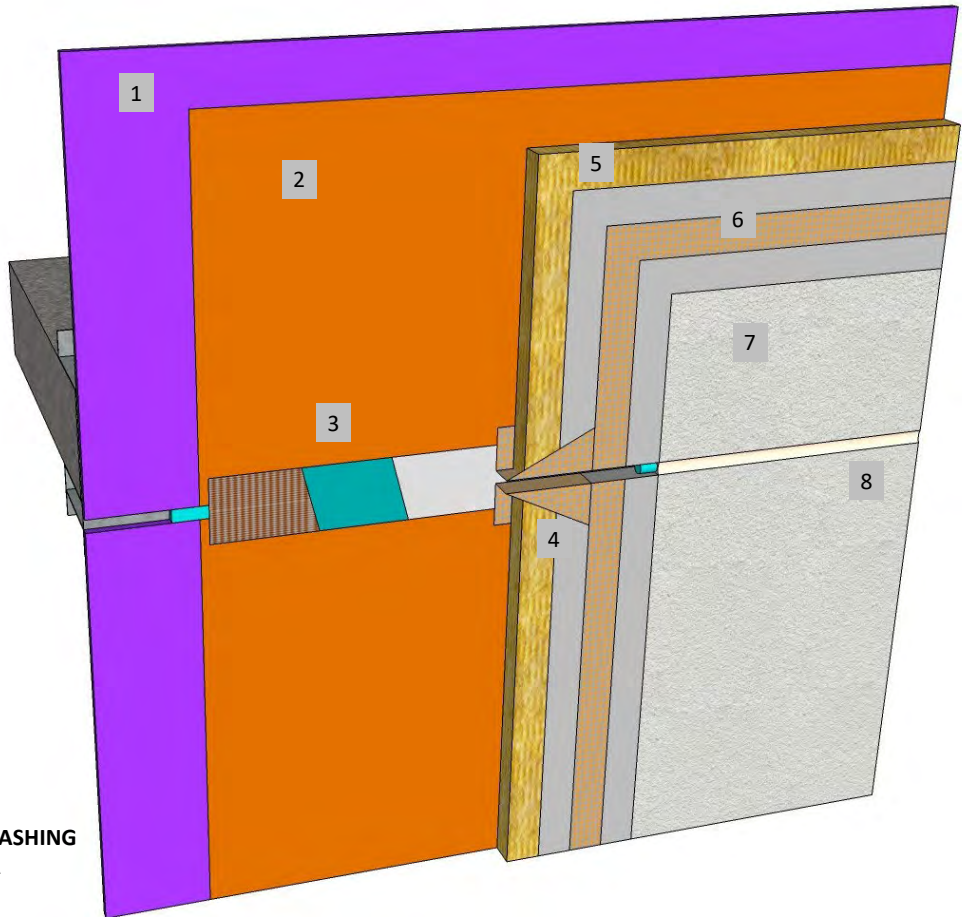
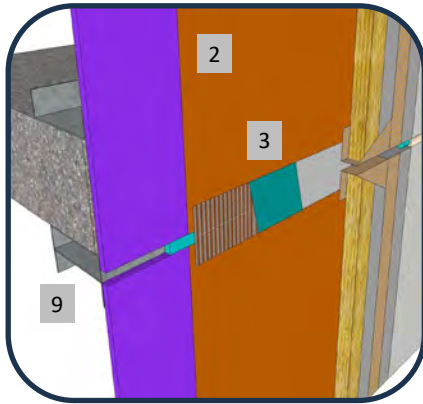
These drawings relay the conceptual conditions of Master Wall® Systems and are not the construction drawings. Ultimately the design and detailing of an entire wall system is the responsibility of a professional. These details will guide the design professional in the use of Master Wall® Products. Master Wall disclaims design, warranty or construction intent or responsibility. Bold or Brand Name = Master Wall® Product. ©2025 Master Wall Inc.®



Master Wall Inc.
Building a Culture of Excellence

**ROLLERSHIELD DRAINAGE
CIFS® TYPE MW**

SYSTEM DETAIL



1. FRAMING & APPROVED SUBSTRATE
2. ROLLERSHIELD AIR/WATER BARRIER
3. EXPANSION BRIDGE: SUPERIORSHIELD FLASHING TAPE/SUPERIORFLASH WITH BACKING OR WEATHERSTOP TAPE
4. BACKWRAPPED CIFS® SHOWN, EIFS PLASTIC ACCESSORIES ARE OPTIONAL
5. MINERAL WOOL INSULATION BOARD ADHERED WITH CHANNELED ADHESIVE
6. MASTER WALL BASE COAT AND MESH
7. SUPERIOR FINISH
8. SEALANT JOINT SIZED FOR ANTICIPATED MOVEMENT, 3/4" (19 MM) MIN.
9. METAL FRAMING SLIP JOINT, MOVEMENT DEFINED BY A/E

RDCIFSMW-30 HORIZONTAL EXPANSION JOINT - METAL FRAME



PO Box 397 · Fortson · GA · 31808 · 800-755-0825 · masterwall.com

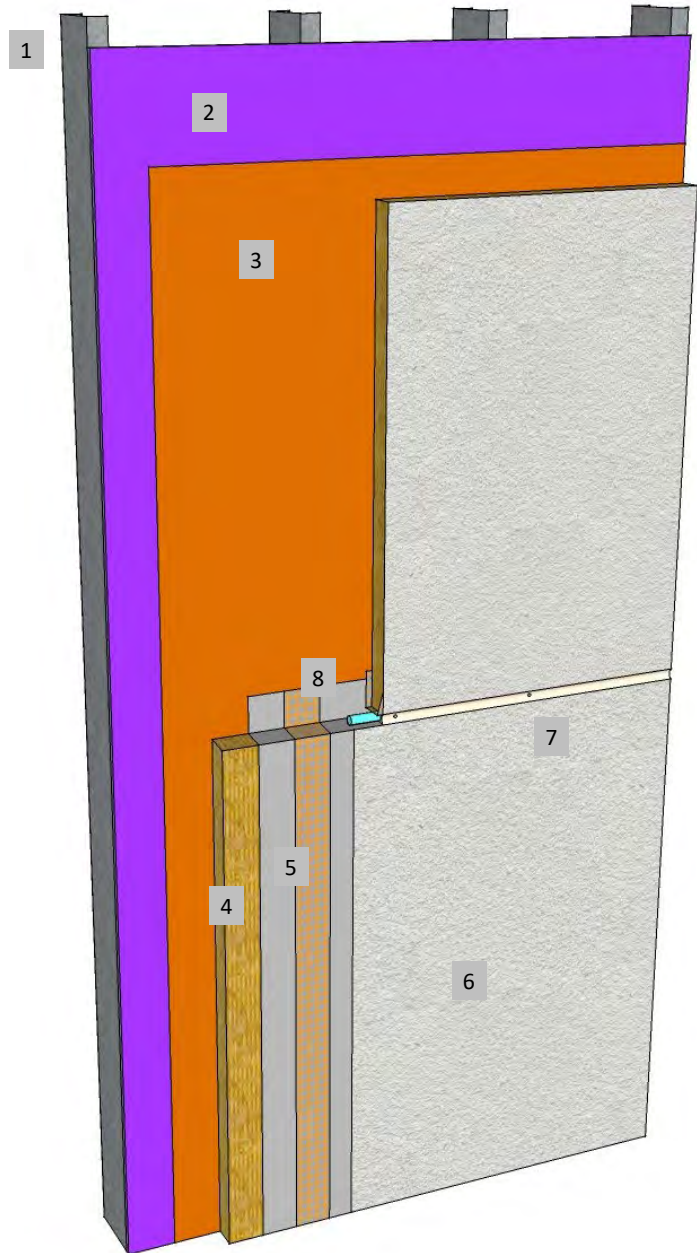
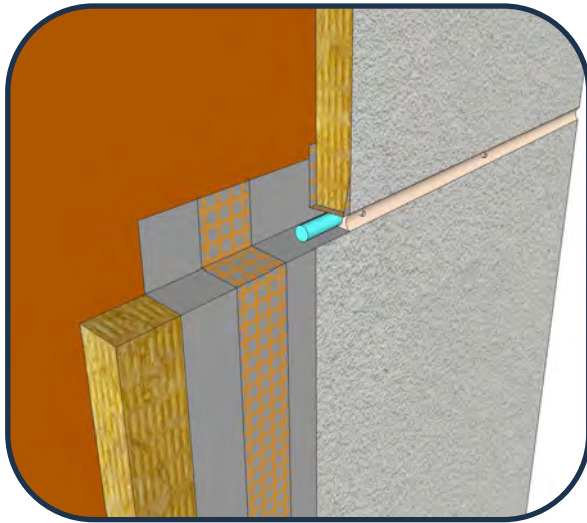
These drawings relay the conceptual conditions of Master Wall® Systems and are not the construction drawings. Ultimately the design and detailing of an entire wall system is the responsibility of a professional. These details will guide the design professional in the use of Master Wall® Products. Master Wall disclaims design, warranty or construction intent or responsibility. Bold or Brand Name = Master Wall® Product. ©2025 Master Wall Inc.®



Master Wall Inc.
Building a Culture of Excellence

**ROLLERSHIELD DRAINAGE
CIFS® TYPE MW**

SYSTEM DETAIL



1. FRAMING AND SHEATHING
2. APPROVED SUBSTRATE
3. **ROLLERSHIELD AIR/WATER BARRIER**
4. MINERAL WOOL INSULATION BOARD ADHERED WITH **CHANNELED ADHESIVE**
5. **MASTER WALL BASE COAT AND MESH**
6. **SUPERIOR FINISH**
7. SEALANT JOINT, 3/4" (19 MM) MIN. WITH WEEP TUBES @ 24" O.C.
8. EXTEND BASE COAT AND MESH 2-1/2" (63 MM) MIN. ONTO SUBSTRATE

RDCIFSMW-31 FLOOR LINE DRAINAGE

M Master Wall Inc.
Building a Culture of Excellence

PO Box 397 · Fortson · GA · 31808 · 800-755-0825 · masterwall.com

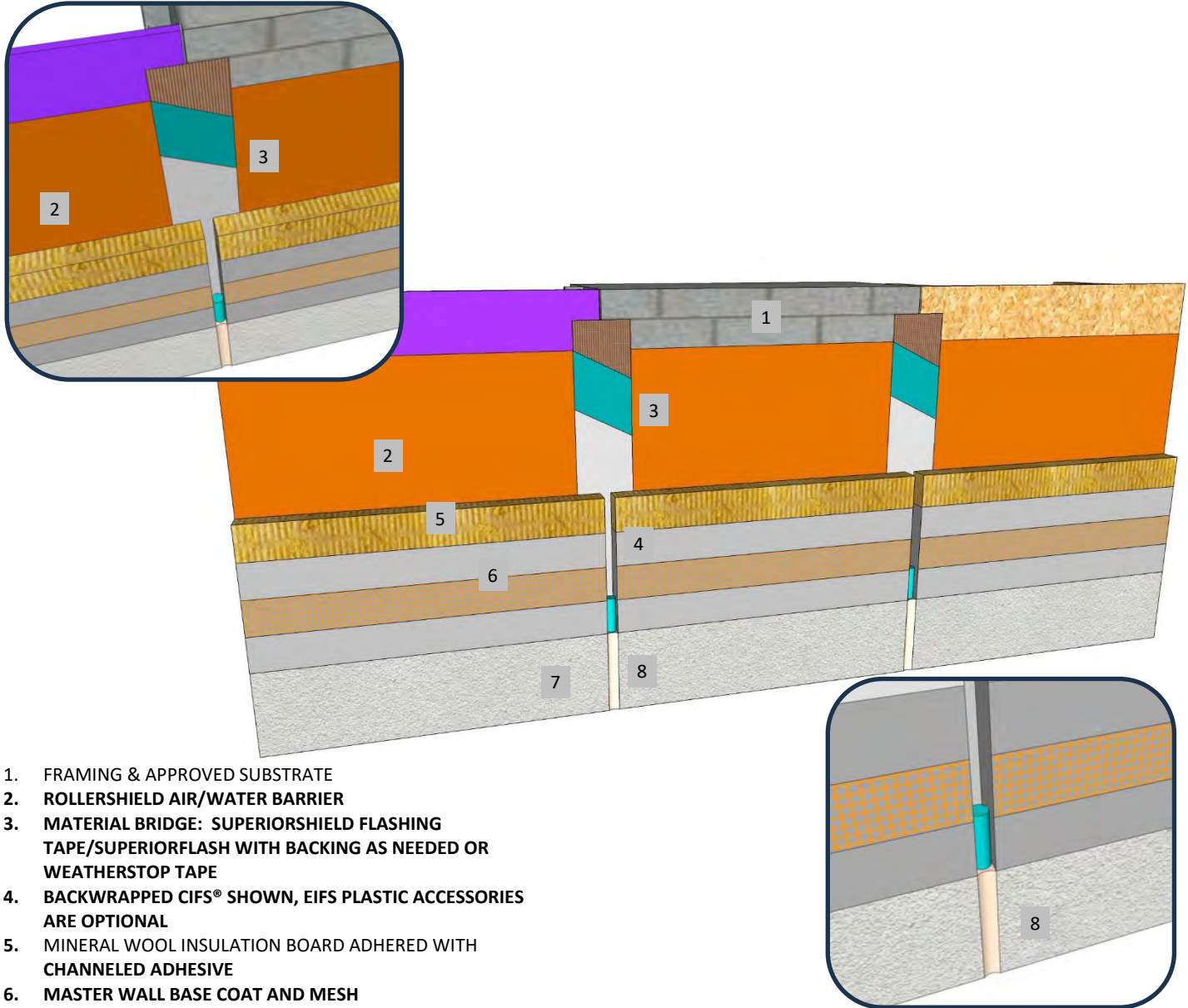
These drawings relay the conceptual conditions of Master Wall® Systems and are not the construction drawings. Ultimately the design and detailing of an entire wall system is the responsibility of a professional. These details will guide the design professional in the use of Master Wall® Products. Master Wall disclaims design, warranty or construction intent or responsibility. Bold or Brand Name = Master Wall® Product. ©2025 Master Wall Inc.®



Master Wall Inc.
Building a Culture of Excellence

**ROLLERSHIELD DRAINAGE
CIFS® TYPE MW**

SYSTEM DETAIL



1. FRAMING & APPROVED SUBSTRATE
2. ROLLERSHIELD AIR/WATER BARRIER
3. MATERIAL BRIDGE: SUPERIORSHIELD FLASHING TAPE/SUPERIORFLASH WITH BACKING AS NEEDED OR WEATHERSTOP TAPE
4. BACKWRAPPED CIFS® SHOWN, EIFS PLASTIC ACCESSORIES ARE OPTIONAL
5. MINERAL WOOL INSULATION BOARD ADHERED WITH CHANNELED ADHESIVE
6. MASTER WALL BASE COAT AND MESH
7. SUPERIOR FINISH
8. SEALANT JOINT SIZED FOR ANTICIPATED MOVEMENT, 3/4" (19 MM) MIN.

RDCIFSMW-32 DISSIMILAR SUBSTRATES/SUBSTRATE CHANGE

M Master Wall Inc.
Building a Culture of Excellence

PO Box 397 · Fortson · GA · 31808 · 800-755-0825 · masterwall.com

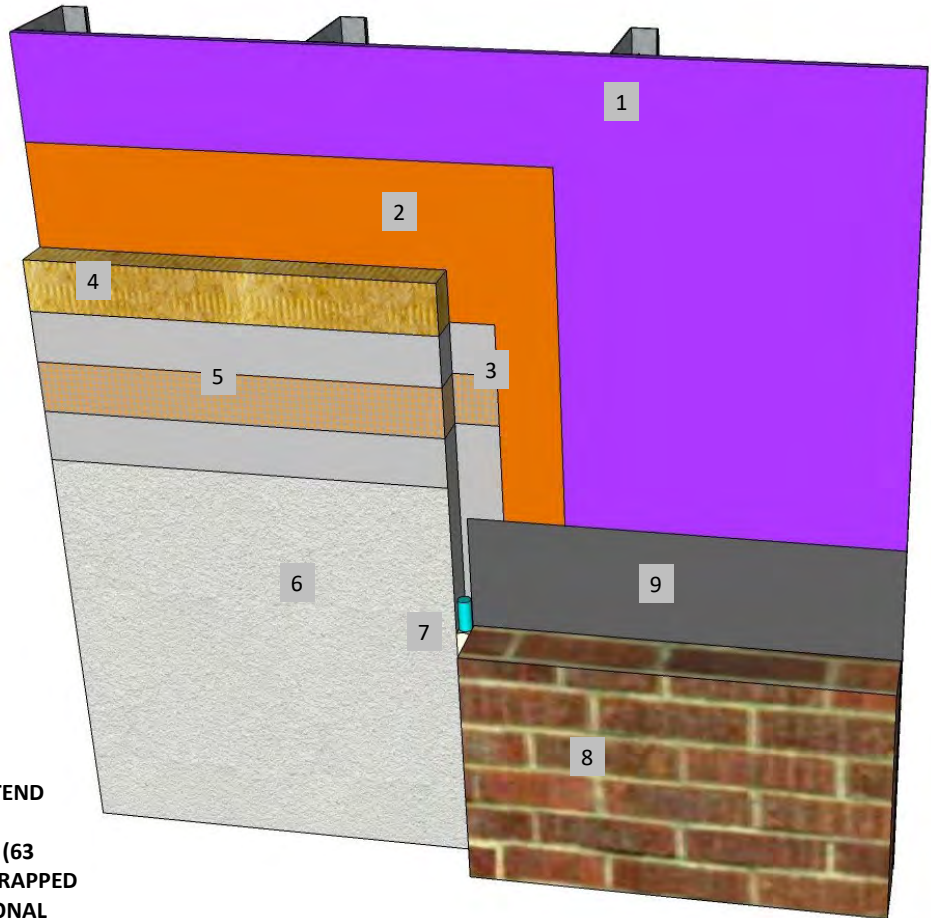
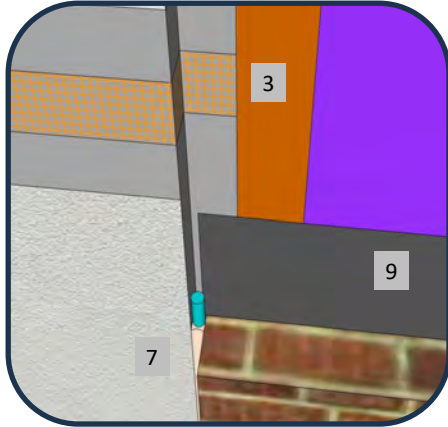
These drawings relay the conceptual conditions of Master Wall® Systems and are not the construction drawings. Ultimately the design and detailing of an entire wall system is the responsibility of a professional. These details will guide the design professional in the use of Master Wall® Products. Master Wall disclaims design, warranty or construction intent or responsibility. Bold or Brand Name = Master Wall® Product. ©2025 Master Wall Inc.®



Master Wall Inc.
Building a Culture of Excellence

**ROLLERSHIELD DRAINAGE
CIFS® TYPE MW**

SYSTEM DETAIL



1. FRAMING & APPROVED SUBSTRATE
2. ROLLERSHIELD AIR/WATER BARRIER, EXTEND PAST SYSTEM IF POSSIBLE
3. BASE COAT AND MESH WRAPPED 2-1/2" (63 MM) MIN. ONTO WALL SHOWN, BACKWRAPPED OR EIFS PLASTIC ACCESSORIES ARE OPTIONAL
4. MINERAL WOOL INSULATION BOARD ADHERED WITH CHanneled ADHESIVE
5. MASTER WALL BASE COAT AND MESH
6. SUPERIOR FINISH
7. SEALANT JOINT SIZED FOR ANTICIPATED MOVEMENT, 3/4" (19 MM) MIN.
8. DISSIMILAR MATERIAL (BRICK, STONE, SIDING, ETC.)
9. WEATHER RESISTIVE BARRIER

BEST PRACTICE: EXTEND ROLLERSHIELD 6" (15 CM) PAST TRANSITION LOCATION AND ENCAPSULATE WITH MESH AND BASE COAT EXTENDED 2-1/2" (63 MM) ONTO THE ROLLERSHIELD.

ALTERNATE PRACTICE: BACKWRAP EIFS, THEN SEAL THE OTHER MATERIAL WATER BARRIER TO THE CIFS® WITH AN APPROVED SEALANT (BY OTHERS)

RDCIFSMW-33 DISSIMILAR MATERIALS



PO Box 397 · Fortson · GA · 31808 · 800-755-0825 · masterwall.com

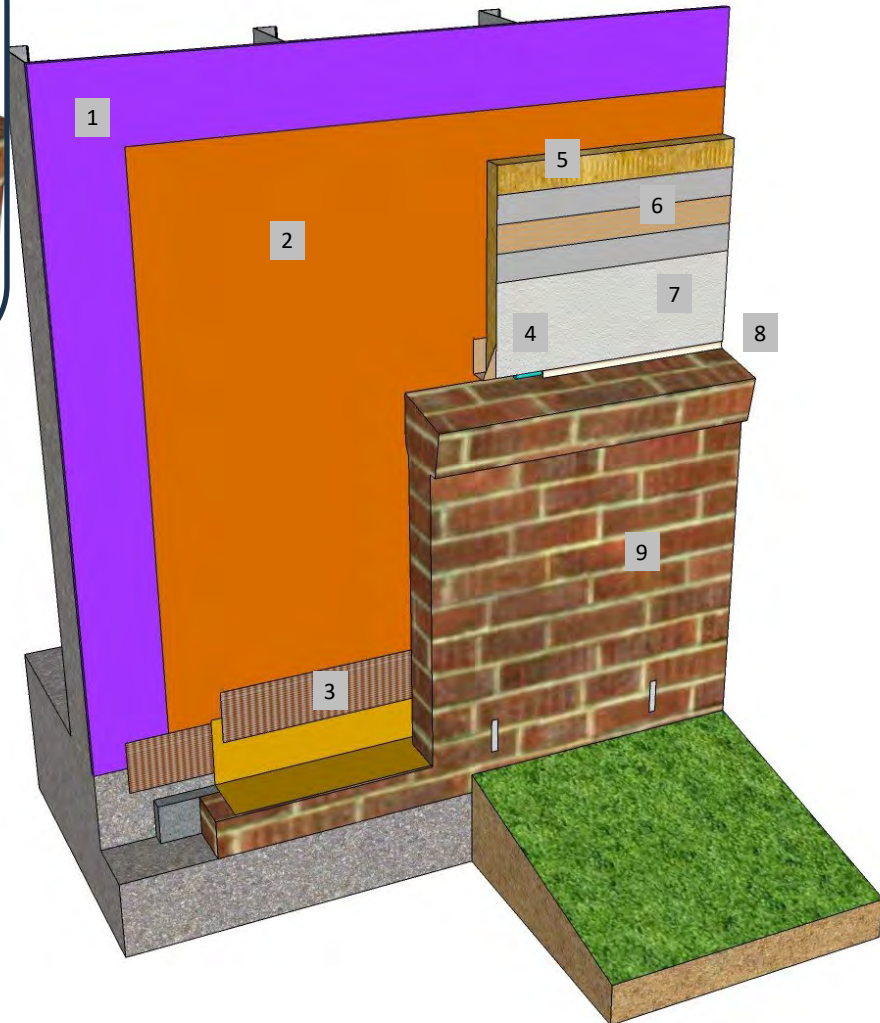
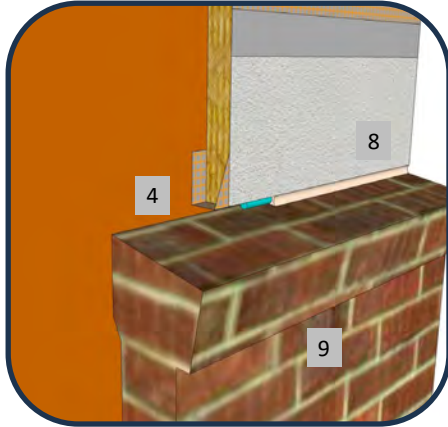
These drawings relay the conceptual conditions of Master Wall® Systems and are not the construction drawings. Ultimately the design and detailing of an entire wall system is the responsibility of a professional. These details will guide the design professional in the use of Master Wall® Products. Master Wall disclaims design, warranty or construction intent or responsibility. Bold or Brand Name = Master Wall® Product. ©2025 Master Wall Inc.®



Master Wall Inc.
Building a Culture of Excellence

**ROLLERSHIELD DRAINAGE
CIFS® TYPE MW**

SYSTEM DETAIL



1. FRAMING & APPROVED SUBSTRATE
2. ROLLERSHIELD AIR/WATER BARRIER
3. SUPERIORSHIELD FLASHING TAPE
FLASHED ONTO FLASHING
4. BACKWRAPPING SHOWN, EIFS PLASTIC
ACCESSORIES ARE OPTIONAL
5. MINERAL WOOL INSULATION BOARD
ADHERED WITH CHANNELED ADHESIVE
6. MASTER WALL BASE COAT AND MESH
7. SUPERIOR FINISH
8. SEALANT JOINT SIZED FOR ANTICIPATED
MOVEMENT, 3/4" (19 MM) MIN.
9. DISSIMILAR MATERIAL (BRICK, STONE,
SIDING, ETC.)

***RDCIFSMW-34 DISSIMILAR CLADDING TRANSITION WITH CONTINUOUS WATER
BARRIER***

M Master Wall Inc.
Building a Culture of Excellence

PO Box 397 · Fortson · GA · 31808 · 800-755-0825 · masterwall.com

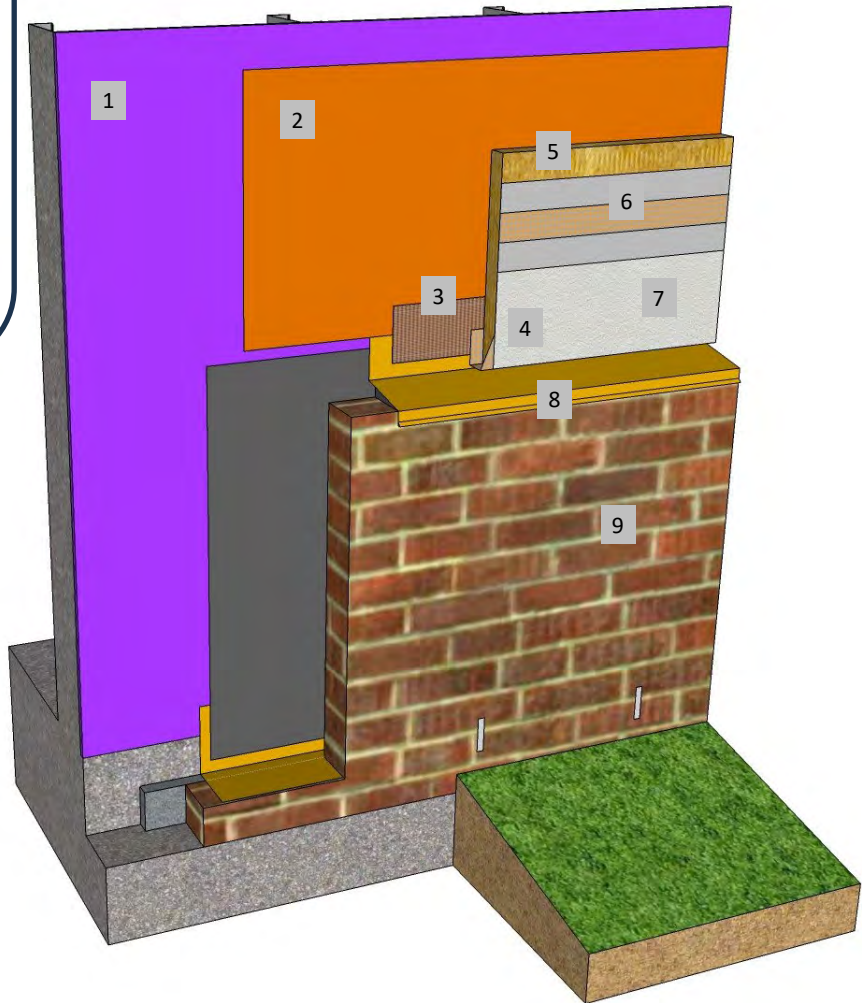
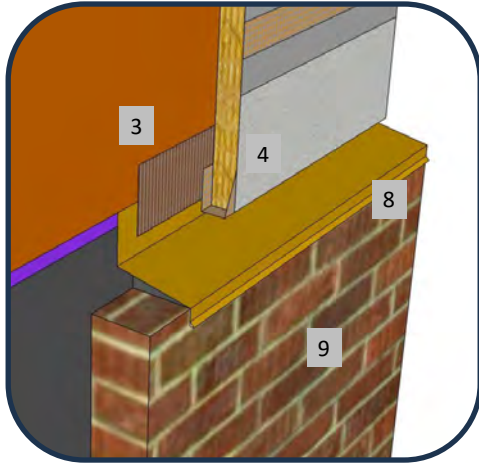
These drawings relay the conceptual conditions of Master Wall® Systems and are not the construction drawings. Ultimately the design and detailing of an entire wall system is the responsibility of a professional. These details will guide the design professional in the use of Master Wall® Products. Master Wall disclaims design, warranty or construction intent or responsibility. Bold or Brand Name = Master Wall® Product. ©2025 Master Wall Inc.®



Master Wall Inc.
Building a Culture of Excellence

**ROLLERSHIELD DRAINAGE
CIFS® TYPE MW**

SYSTEM DETAIL



1. FRAMING & APPROVED SUBSTRATE
2. ROLLERSHIELD AIR/WATER BARRIER
3. SUPERIORSHIELD FLASHING TAPE
FLASHED ONTO FLASHING
4. BACKWRAPPING SHOWN, DV ROLL &
EIFS PLASTIC ACCESSORIES ARE
OPTIONAL
5. MINERAL WOOL INSULATION BOARD
ADHERED WITH CHANNELED ADHESIVE
6. MASTER WALL BASE COAT AND MESH
7. SUPERIOR FINISH
8. FLASHING, SLOPE TO DRAIN
9. DISSIMILAR MATERIAL (BRICK, STONE,
SIDING, ETC.)

NOTE: LEAVE A 1/8" (3 MM) MINIMUM GAP TO ALLOW FOR DRAINAGE BETWEEN THE CIFS® AND FLASHING

RDCIFSMW-35 DISSIMILAR CLADDING TRANSITION WITH FLASHING

M Master Wall Inc.
Building a Culture of Excellence

PO Box 397 · Fortson · GA · 31808 · 800-755-0825 · masterwall.com

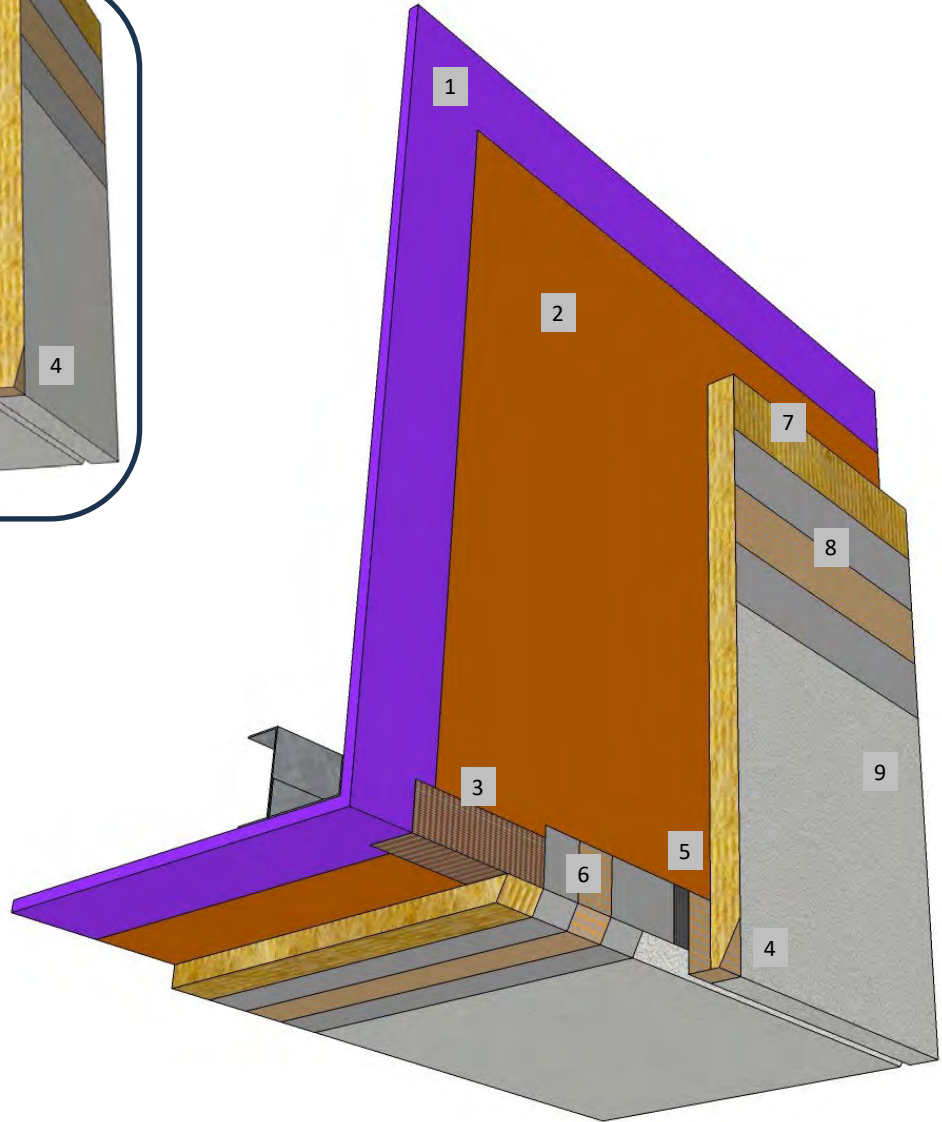
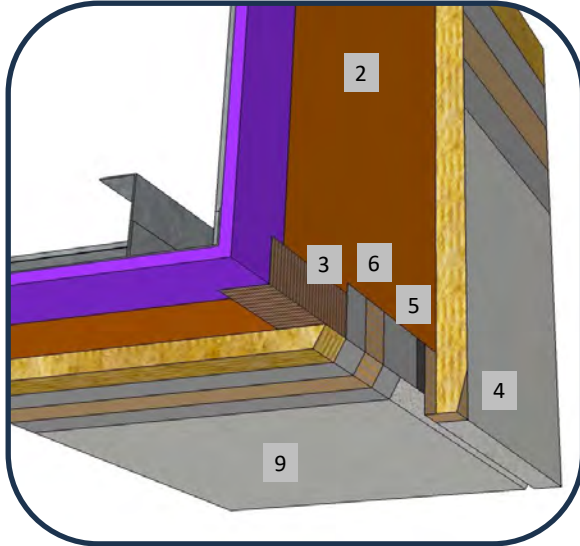
These drawings relay the conceptual conditions of Master Wall® Systems and are not the construction drawings. Ultimately the design and detailing of an entire wall system is the responsibility of a professional. These details will guide the design professional in the use of Master Wall® Products. Master Wall disclaims design, warranty or construction intent or responsibility. Bold or Brand Name = Master Wall® Product. ©2025 Master Wall Inc.®



Master Wall Inc.
Building a Culture of Excellence

**ROLLERSHIELD DRAINAGE
CIFS® TYPE MW**

SYSTEM DETAIL



1. FRAMING & APPROVED SUBSTRATE
2. ROLLERSHIELD AIR/WATER BARRIER
3. SUPERIORSHIELD FLASHING TAPE
4. BACKWRAPPING SHOWN, EIFS PLASTIC ACCESSORIES ARE OPTIONAL
5. DV ROLL, OPTIONAL
6. SOFFIT MESH SHOWN FLASHED ONTO WALL 2-1/2" (63 MM) MIN., BACKWRAP OPTIONAL
7. MINERAL WOOL INSULATION BOARD ADHERED WITH CHANNELED ADHESIVE
8. MASTER WALL BASE COAT AND MESH
9. SUPERIOR FINISH

RDCIFSMW-36 SOFFIT/DRIP

M Master Wall Inc.
Building a Culture of Excellence

PO Box 397 · Fortson · GA · 31808 · 800-755-0825 · masterwall.com

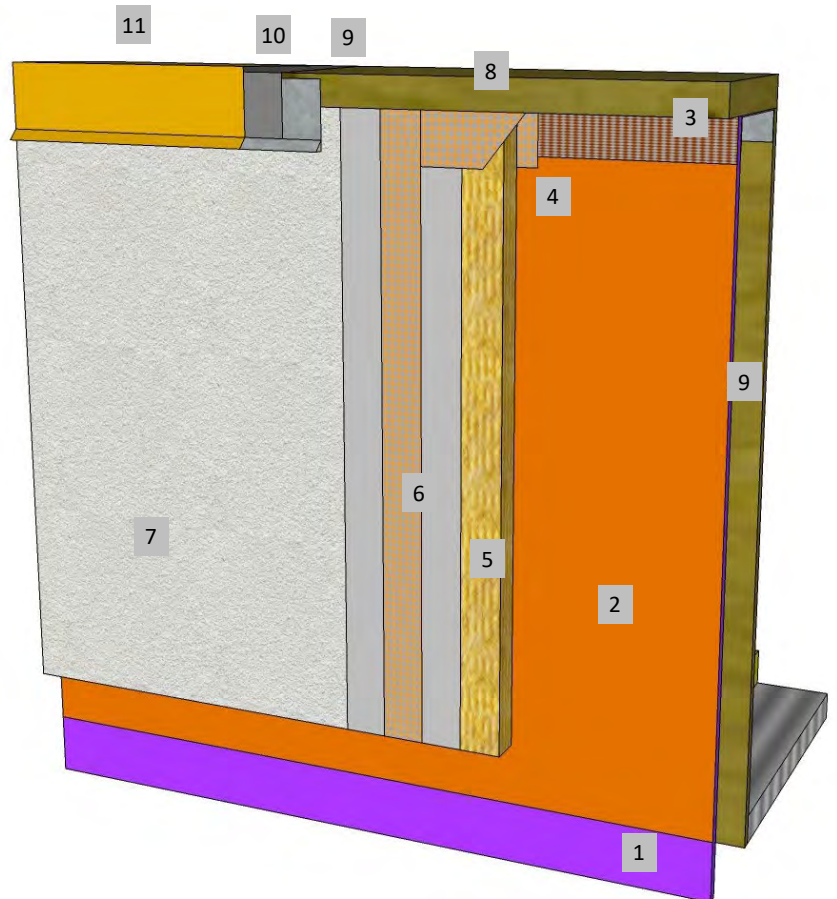
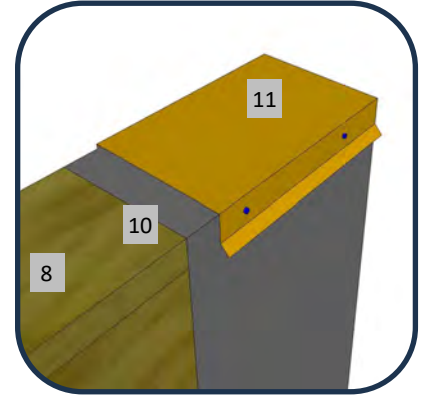
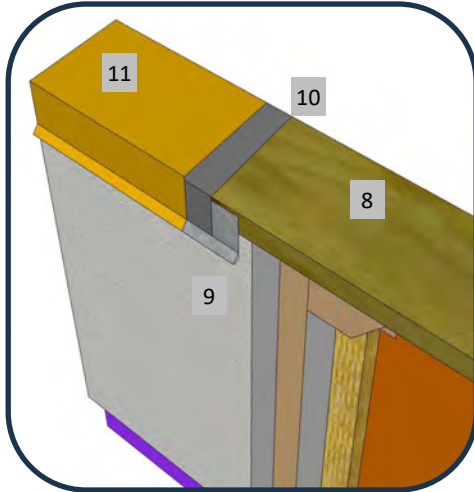
These drawings relay the conceptual conditions of Master Wall® Systems and are not the construction drawings. Ultimately the design and detailing of an entire wall system is the responsibility of a professional. These details will guide the design professional in the use of Master Wall® Products. Master Wall disclaims design, warranty or construction intent or responsibility. Bold or Brand Name = Master Wall® Product. ©2025 Master Wall Inc.®



Master Wall Inc.
Building a Culture of Excellence

**ROLLERSHIELD DRAINAGE
CIFS® TYPE MW**

SYSTEM DETAIL



1. FRAMING & APPROVED SUBSTRATE
2. ROLLERSHIELD AIR/WATER BARRIER
3. SUPERIORSHIELD FLASHING TAPE PLACED ONTO NAILER
4. BACKWRAPPING SHOWN, EIFS PLASTIC ACCESSORIES ARE OPTIONAL
5. MINERAL WOOL INSULATION BOARD ADHERED WITH CHANNELED ADHESIVE
6. MASTER WALL BASE COAT AND MESH
7. SUPERIOR FINISH
8. TREATED NAILER
9. ROOF CLEAT, EXTEND 2-1/2" (63 MM) OVER SYSTEM AND SEAL LOWER EDGE
10. ROOFING MATERIAL OR SECONDARY UNDER-CAP PROTECTION
11. ROOF CAP, SLOPE TO BACK OF PARAPET, FASTENED TO NAILER

RDCIFSMW-37 PARAPET CAP

M Master Wall Inc.
Building a Culture of Excellence

PO Box 397 · Fortson · GA · 31808 · 800-755-0825 · masterwall.com

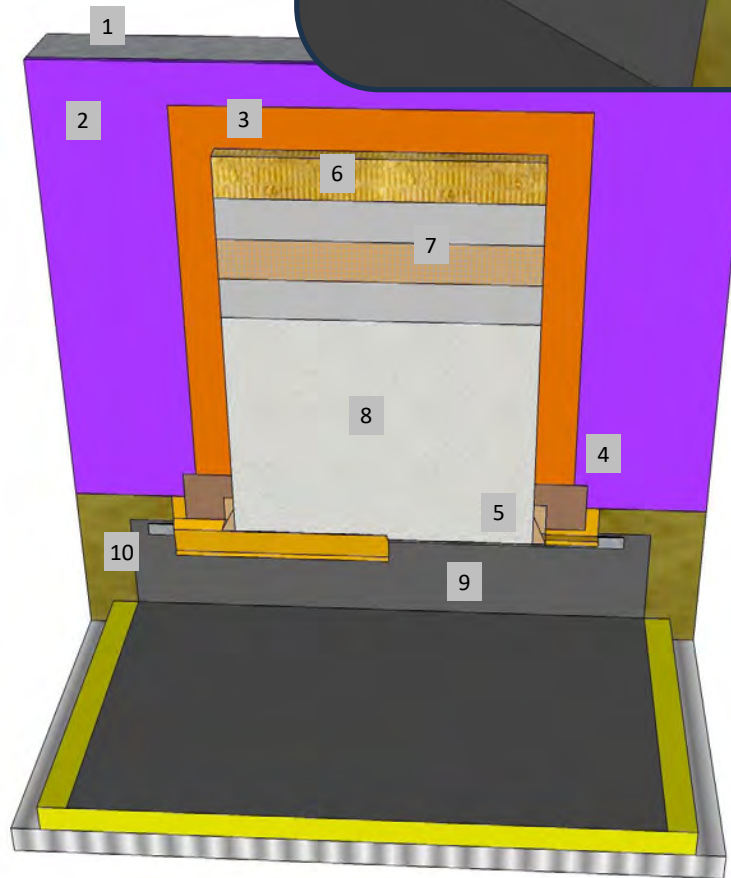
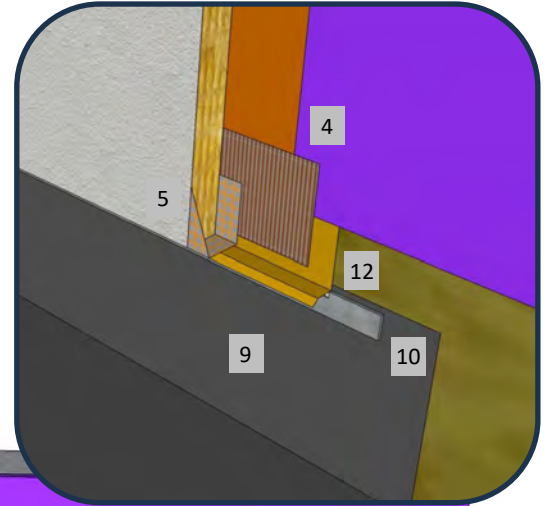
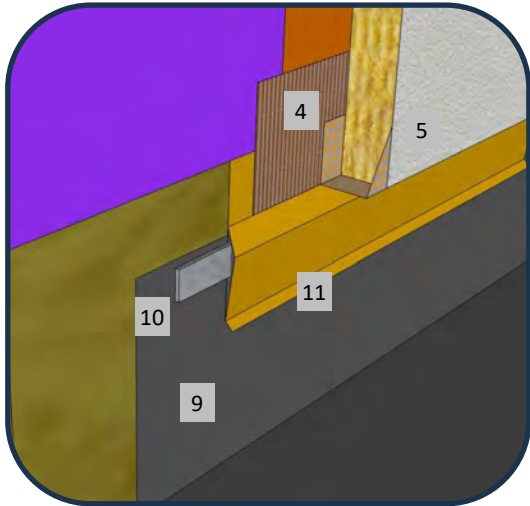
These drawings relay the conceptual conditions of Master Wall® Systems and are not the construction drawings. Ultimately the design and detailing of an entire wall system is the responsibility of a professional. These details will guide the design professional in the use of Master Wall® Products. Master Wall disclaims design, warranty or construction intent or responsibility. Bold or Brand Name = Master Wall® Product. ©2025 Master Wall Inc.®



Master Wall Inc.
Building a Culture of Excellence

**ROLLERSHIELD DRAINAGE
CIFS® TYPE MW**

SYSTEM DETAIL



1. FRAMING
2. APPROVED SUBSTRATE
3. **ROLLERSHIELD AIR/WATER BARRIER**
4. **SUPERIORSHIELD FLASHING TAPE WRAPPED ONTO FLASHING**
5. **BACKWRAPPED CIFS® SHOWN, DV ROLL OR DRAINAGE TRACK IS OPTIONAL**
6. MINERAL WOOL INSULATION BOARD ADHERED WITH **CHANNELED ADHESIVE**
7. **MASTER WALL BASE COAT AND MESH**
8. **SUPERIOR FINISH**
9. KEEP SYSTEM 8" (203 MM) MIN. ABOVE ROOF PER ROOFING SYSTEM MANUFACTURER RECOMMENDATIONS
10. TERMINATION BAR OR OTHER TERMINATION PER ROOFING SYSTEM MANUFACTURER RECOMMENDATIONS
11. TWO-PIECE TYPE ROOF FLASHING TERMINATION, LEAVE OPEN FOR DRAINAGE
12. FLASHING TERMINATION, SEAL TO TERMINATION BAR, LEAVE APPROX. 1/8" (3 MM) GAP FOR DRAINAGE

RDCIFSMW-38 FLAT ROOF TERMINATION

M Master Wall Inc.
Building a Culture of Excellence

PO Box 397 · Fortson · GA · 31808 · 800-755-0825 · masterwall.com

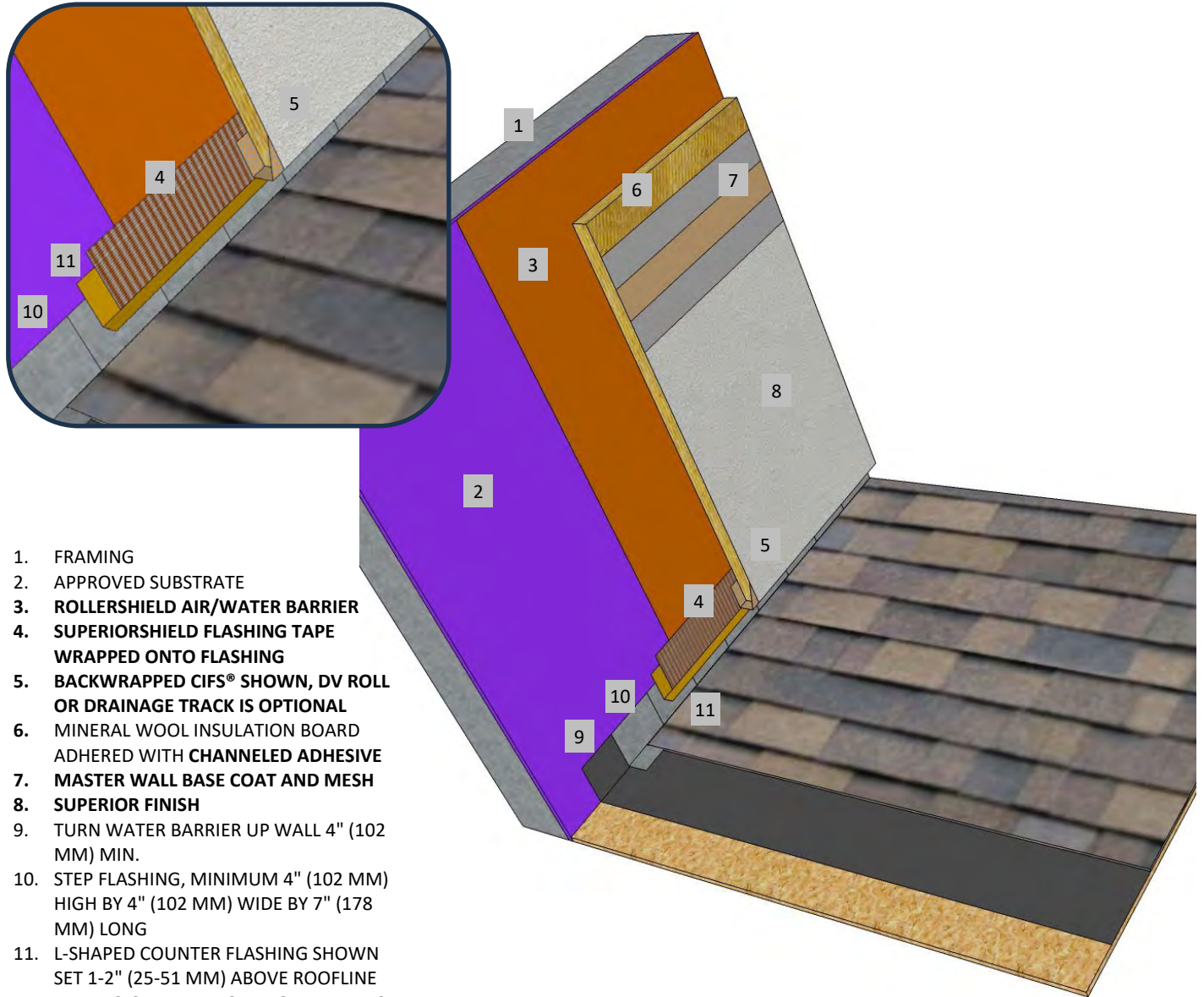
These drawings relay the conceptual conditions of Master Wall® Systems and are not the construction drawings. Ultimately the design and detailing of an entire wall system is the responsibility of a professional. These details will guide the design professional in the use of Master Wall® Products. Master Wall disclaims design, warranty or construction intent or responsibility. Bold or Brand Name = Master Wall® Product. ©2025 Master Wall Inc.®



Master Wall Inc.
Building a Culture of Excellence

**ROLLERSHIELD DRAINAGE
CIFS® TYPE MW**

SYSTEM DETAIL



1. FRAMING
2. APPROVED SUBSTRATE
3. **ROLLERSHIELD AIR/WATER BARRIER**
4. **SUPERIORSHIELD FLASHING TAPE WRAPPED ONTO FLASHING**
5. **BACKWRAPPED CIFS® SHOWN, DV ROLL OR DRAINAGE TRACK IS OPTIONAL**
6. MINERAL WOOL INSULATION BOARD ADHERED WITH **CHANNELED ADHESIVE**
7. **MASTER WALL BASE COAT AND MESH**
8. **SUPERIOR FINISH**
9. TURN WATER BARRIER UP WALL 4" (102 MM) MIN.
10. STEP FLASHING, MINIMUM 4" (102 MM) HIGH BY 4" (102 MM) WIDE BY 7" (178 MM) LONG
11. L-SHAPED COUNTER FLASHING SHOWN SET 1-2" (25-51 MM) ABOVE ROOFLINE PER REGIONAL, NATIONAL OR BUILDING CODE REQUIREMENTS

RDCIFS-39 SLOPED ROOF TERMINATION

M Master Wall Inc.
Building a Culture of Excellence

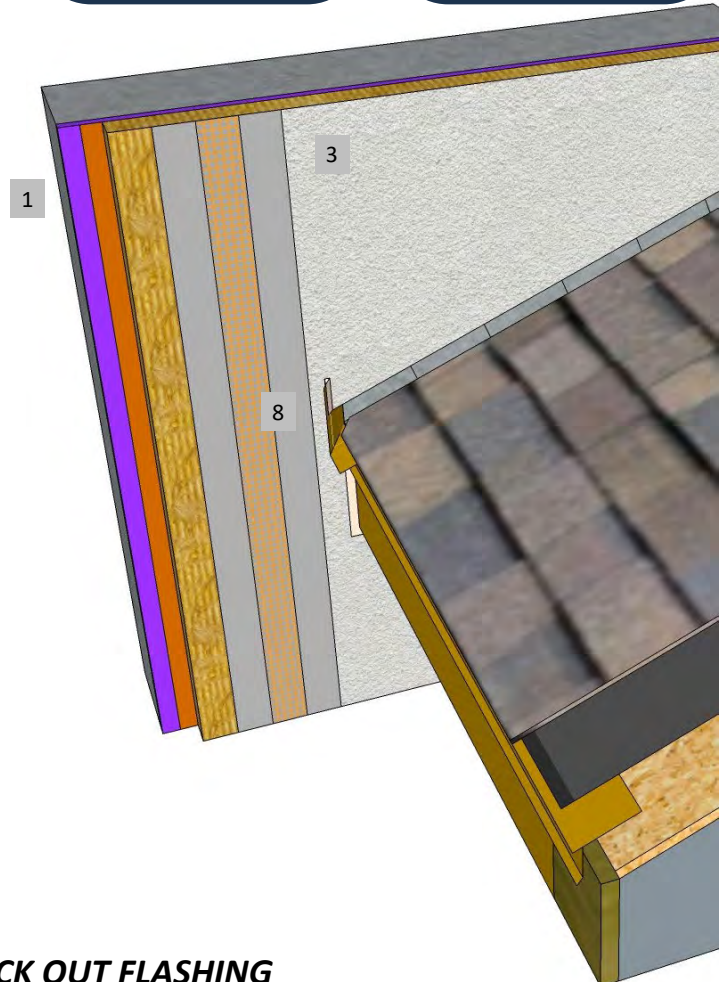
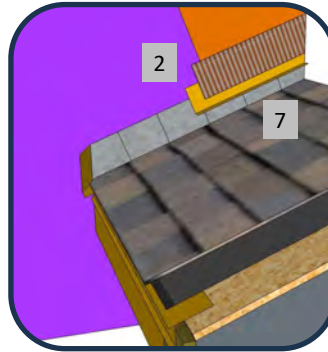
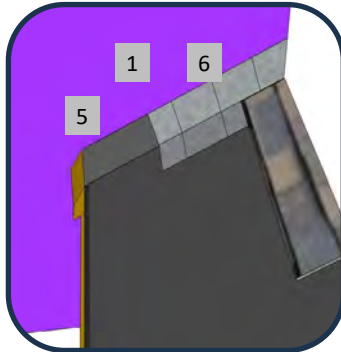
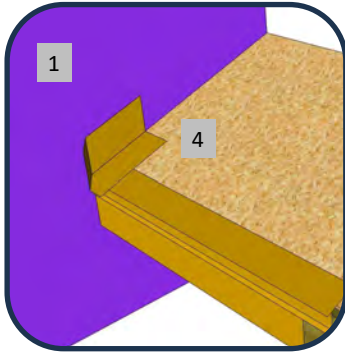
These drawings relay the conceptual conditions of Master Wall® Systems and are not the construction drawings. Ultimately the design and detailing of an entire wall system is the responsibility of a professional. These details will guide the design professional in the use of Master Wall® Products. Master Wall disclaims design, warranty or construction intent or responsibility. Bold or Brand Name = Master Wall® Product. ©2025 Master Wall Inc.®



Master Wall Inc.
Building a Culture of Excellence

**ROLLERSHIELD DRAINAGE
CIFS® TYPE MW**

SYSTEM DETAIL



1. FRAMING & APPROVED SUBSTRATE
2. **ROLLERSHIELD AIR/WATER BARRIER – SEE SLOPED ROOF DETAIL**
3. **MASTER WALL ROLLERSHIELD DRAINAGE CIFS® TYPE MW APPLICATION**
4. PREFABRICATED ANGLED KICK OUT FLASHING, PREFERABLY SET IN SEALANT
5. TURN WATER BARRIER UP WALL 4" (102 MM) MIN.
6. STEP FLASHING, MINIMUM 4" (102 MM) HIGH BY 4" (102 MM) WIDE BY 7" (178 MM) LONG
7. L-SHAPED COUNTER FLASHING SHOWN SET 1-2" (25-51 MM) ABOVE ROOFLINE PER REGIONAL, NATIONAL OR BUILDING CODE REQUIREMENTS
8. SEAL KICK OUT FLASHING TO CIFS®

RDCIFSMW-40 KICK OUT FLASHING

M Master Wall Inc.
Building a Culture of Excellence

PO Box 397 · Fortson · GA · 31808 · 800-755-0825 · masterwall.com

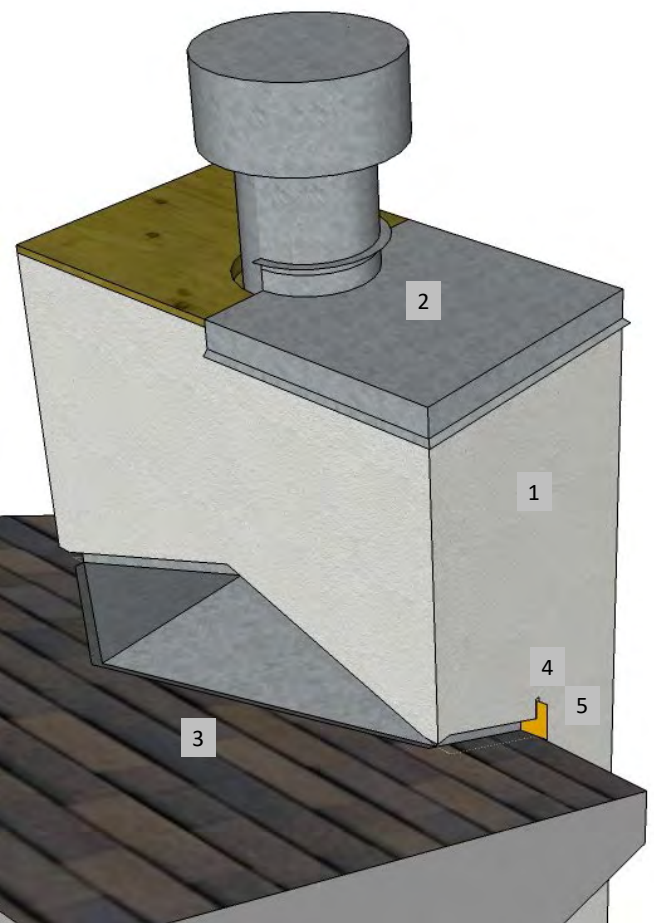
These drawings relay the conceptual conditions of Master Wall® Systems and are not the construction drawings. Ultimately the design and detailing of an entire wall system is the responsibility of a professional. These details will guide the design professional in the use of Master Wall® Products. Master Wall disclaims design, warranty or construction intent or responsibility. Bold or Brand Name = Master Wall® Product. ©2025 Master Wall Inc.®



Master Wall Inc.
Building a Culture of Excellence

**ROLLERSHIELD DRAINAGE
CIFS® TYPE MW**

SYSTEM DETAIL



1. MASTER WALL ROLLERSHIELD DRAINAGE CIFS® TYPE MW APPLICATION
2. CHIMNEY CAP, EXTEND 2" (51 MM) MIN. OVER CIFS® AND SEAL LOWER EDGE.
3. CHIMNEY CRICKET FORMED OUT OF METAL OR ROOFING BY ROOFER, TURNED UP WALL 4" (102 MM) MIN.
4. ROOF KICK OUT
5. SEAL KICK OUT FLASHING TO CIFS®

RDCIFSMW-41 CHIMNEY CRICKET

M Master Wall Inc.
Building a Culture of Excellence

PO Box 397 · Fortson · GA · 31808 · 800-755-0825 · masterwall.com

These drawings relay the conceptual conditions of Master Wall® Systems and are not the construction drawings. Ultimately the design and detailing of an entire wall system is the responsibility of a professional. These details will guide the design professional in the use of Master Wall® Products. Master Wall disclaims design, warranty or construction intent or responsibility. Bold or Brand Name = Master Wall® Product. ©2025 Master Wall Inc.®