



# Rollershield Drainage™ EIFS

Conceptual Details with DV Roll

Corporate • P.O. Box 397 • Fortson • Georgia • 31808 • 800-755-0825 • FAX 706-569-6704

Technical • 800-760-2861

Rollershield with Rollershield Mesh or Rollershield Flashing Tape at sheathing joints and transitions. Spot fasteners with Rollershield

Master Wall Adhesive (apply with notches vertical)

Application Note: Don't apply insulation adhesive where DV Roll is used. Also, it helps to notch or rasp the foam at this location to prevent bowing.

Framing & Sheathing (by others)

Superior Finish

DV Roll, attached with Staples or adhesive

Master Wall Mesh and Base Coat

Master Wall Insulation Board

Backwrap Mesh 2-1/2" (64 mm) onto DV Roll

Keep System 6" (152 mm) above grade

## RSDV-01 Detail at Grade

These drawings relay the conceptual conditions of Master Wall Systems and are not the construction drawings. Ultimately the design and detailing of an entire wall system is the responsibility of a professional. These details will guide the design professional in the use of Master Wall Products. Master Wall disclaims design, warranty or construction intent or responsibility.

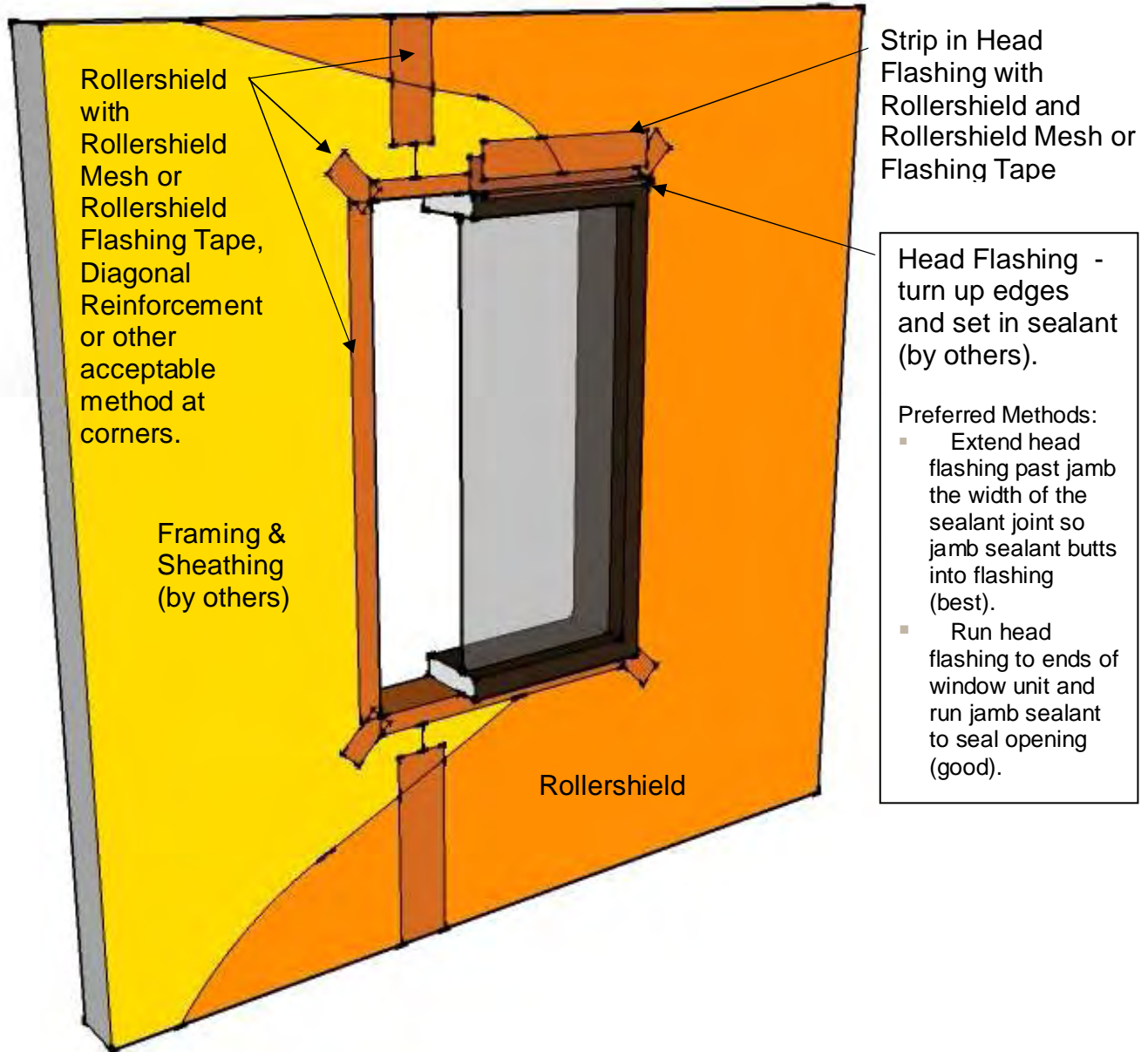


# Rollershield Drainage™ EIFS

Conceptual Details with DV Roll

Corporate • P.O. Box 397 • Fortson • Georgia • 31808 • 800-755-0825 • FAX 706-569-6704

Technical • 800-760-2861



## RSDV-02 General Rollershield Application

These drawings relay the conceptual conditions of Master Wall Systems and are not the construction drawings. Ultimately the design and detailing of an entire wall system is the responsibility of a professional. These details will guide the design professional in the use of Master Wall Products. Master Wall disclaims design, warranty or construction intent or responsibility.

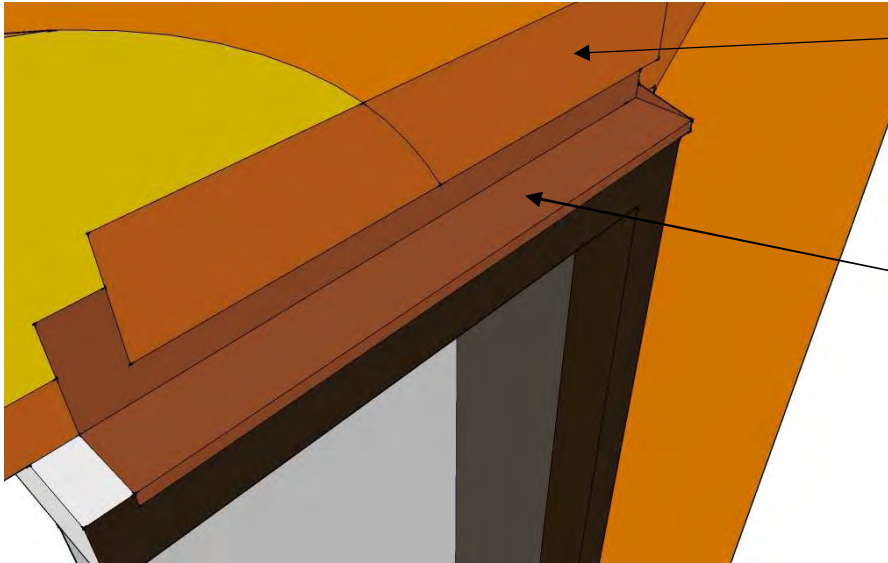


# Rollershield Drainage™ EIFS

Conceptual Details with DV Roll

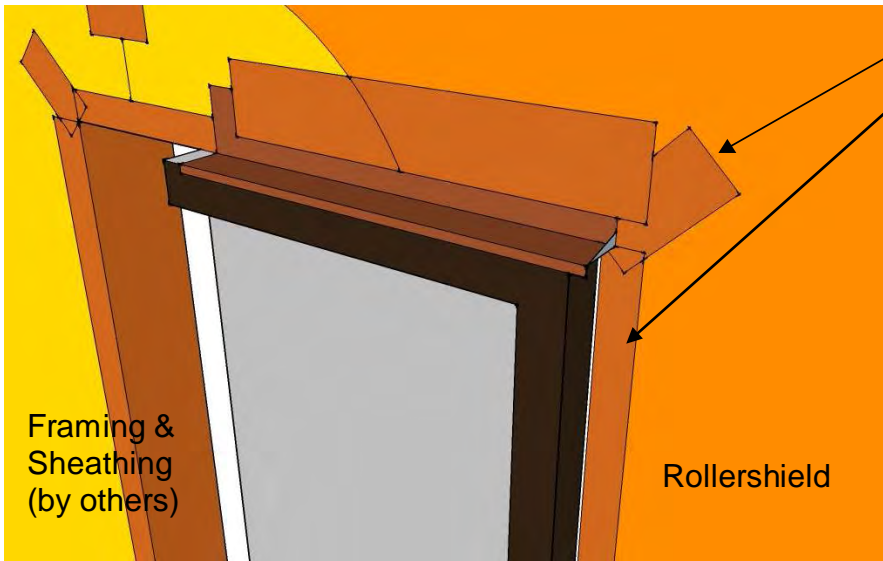
Corporate • P.O. Box 397 • Fortson • Georgia • 31808 • 800-755-0825 • FAX 706-569-6704

Technical • 800-760-2861



Strip in Head  
 Flashing with  
 Rollershield and  
 Rollershield Mesh or  
 Flashing Tape

Head Flashing -  
 turn up edges  
 and set in sealant  
 (by others)



Rollershield  
 with  
 Rollershield  
 Mesh or  
 Rollershield  
 Flashing Tape,  
 Diagonal  
 Reinforcement  
 or other  
 acceptable  
 method at  
 corners.

Framing &  
 Sheathing  
 (by others)

Rollershield

## RSDV-03 General Window Head Flashing

These drawings relay the conceptual conditions of Master Wall Systems and are not the construction drawings. Ultimately the design and detailing of an entire wall system is the responsibility of a professional. These details will guide the design professional in the use of Master Wall Products. Master Wall disclaims design, warranty or construction intent or responsibility.

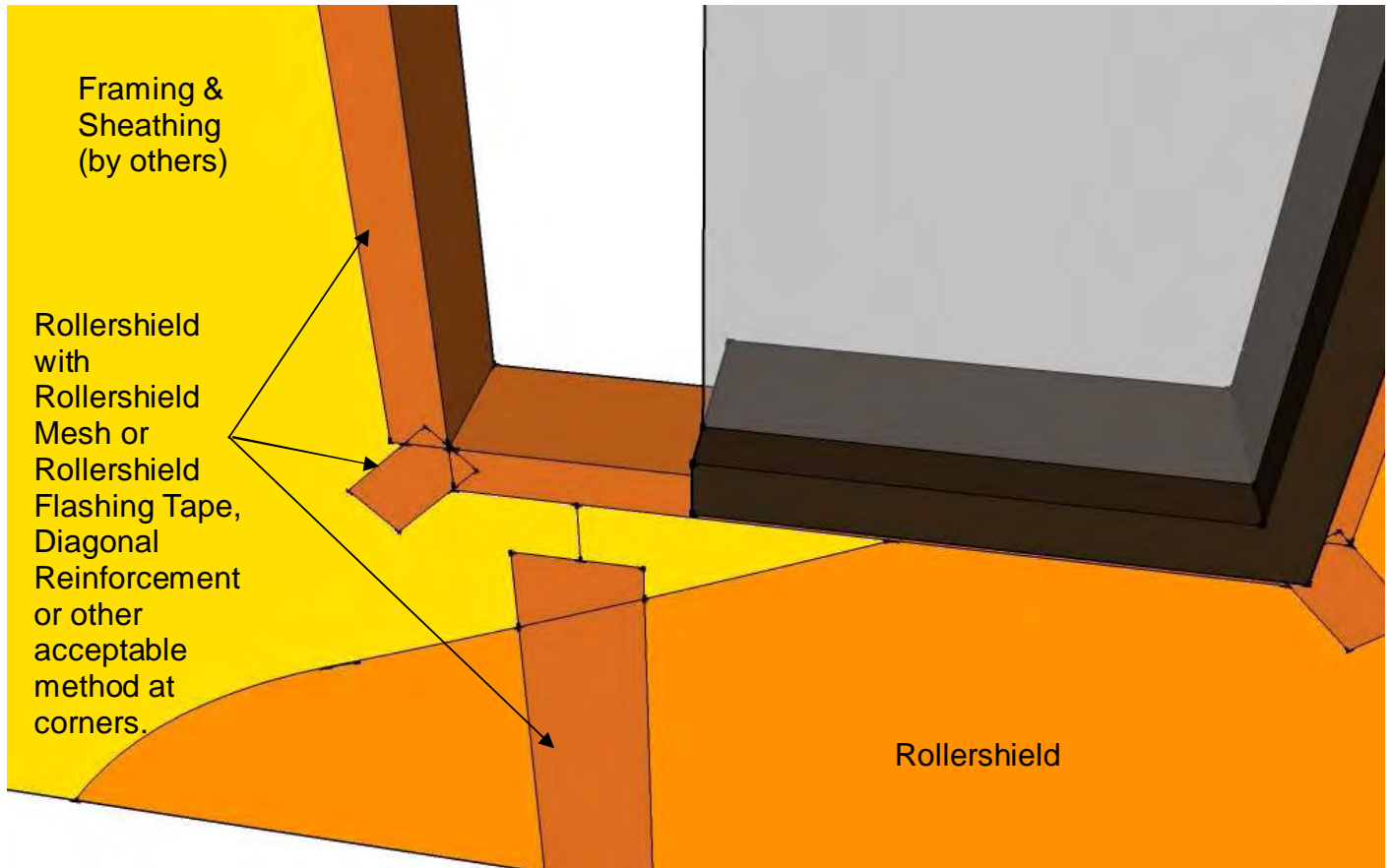


# Rollershield Drainage™ EIFS

Conceptual Details with DV Roll

Corporate • P.O. Box 397 • Fortson • Georgia • 31808 • 800-755-0825 • FAX 706-569-6704

Technical • 800-760-2861



## RSDV-04 General Window Sill Flashing

These drawings relay the conceptual conditions of Master Wall Systems and are not the construction drawings. Ultimately the design and detailing of an entire wall system is the responsibility of a professional. These details will guide the design professional in the use of Master Wall Products. Master Wall disclaims design, warranty or construction intent or responsibility.

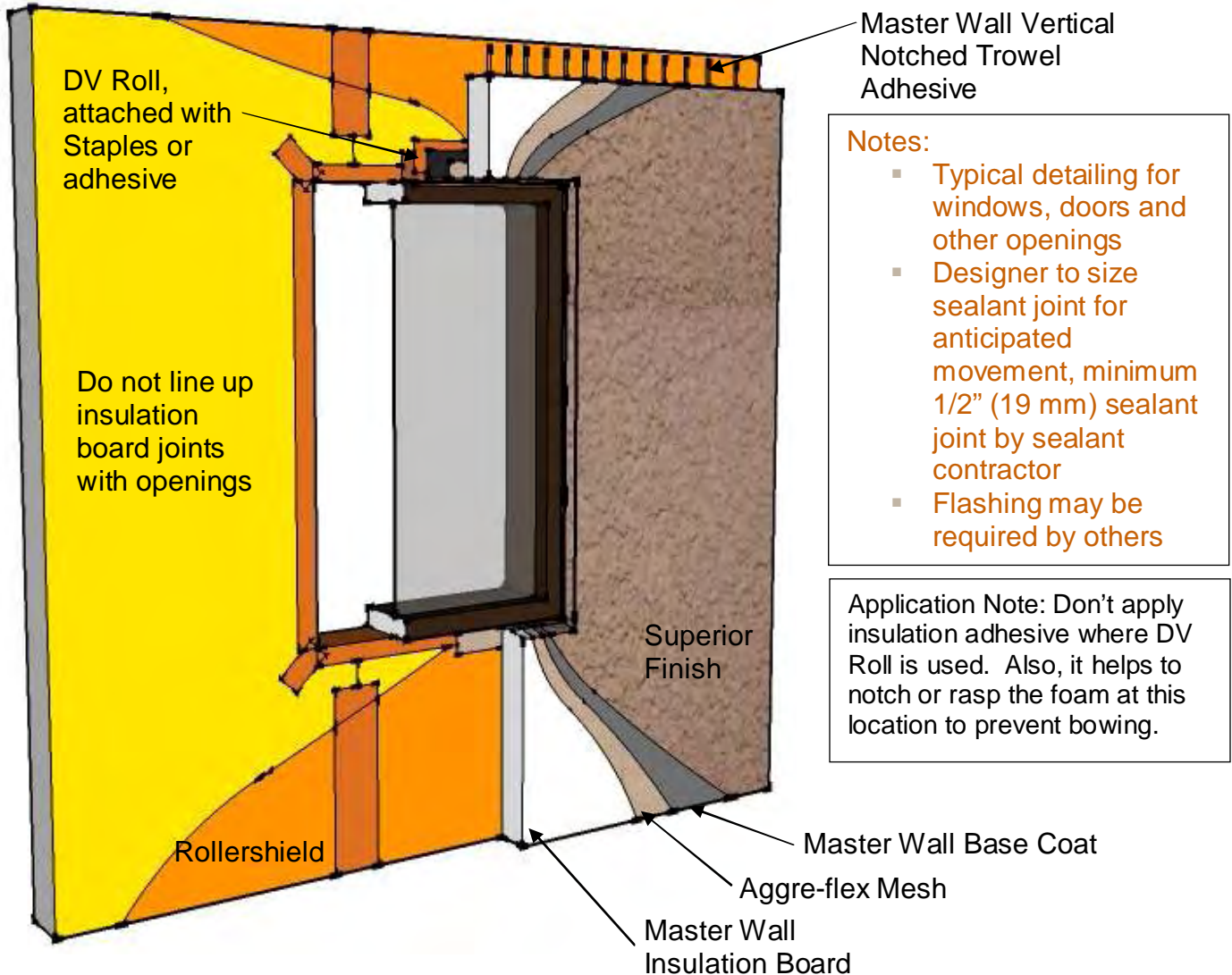


# Rollershield Drainage™ EIFS

Conceptual Details with DV Roll

Corporate • P.O. Box 397 • Fortson • Georgia • 31808 • 800-755-0825 • FAX 706-569-6704

Technical • 800-760-2861



## RSDV-05 General Window Overview

These drawings relay the conceptual conditions of Master Wall Systems and are not the construction drawings. Ultimately the design and detailing of an entire wall system is the responsibility of a professional. These details will guide the design professional in the use of Master Wall Products. Master Wall disclaims design, warranty or construction intent or responsibility.



# Rollershield Drainage™ EIFS

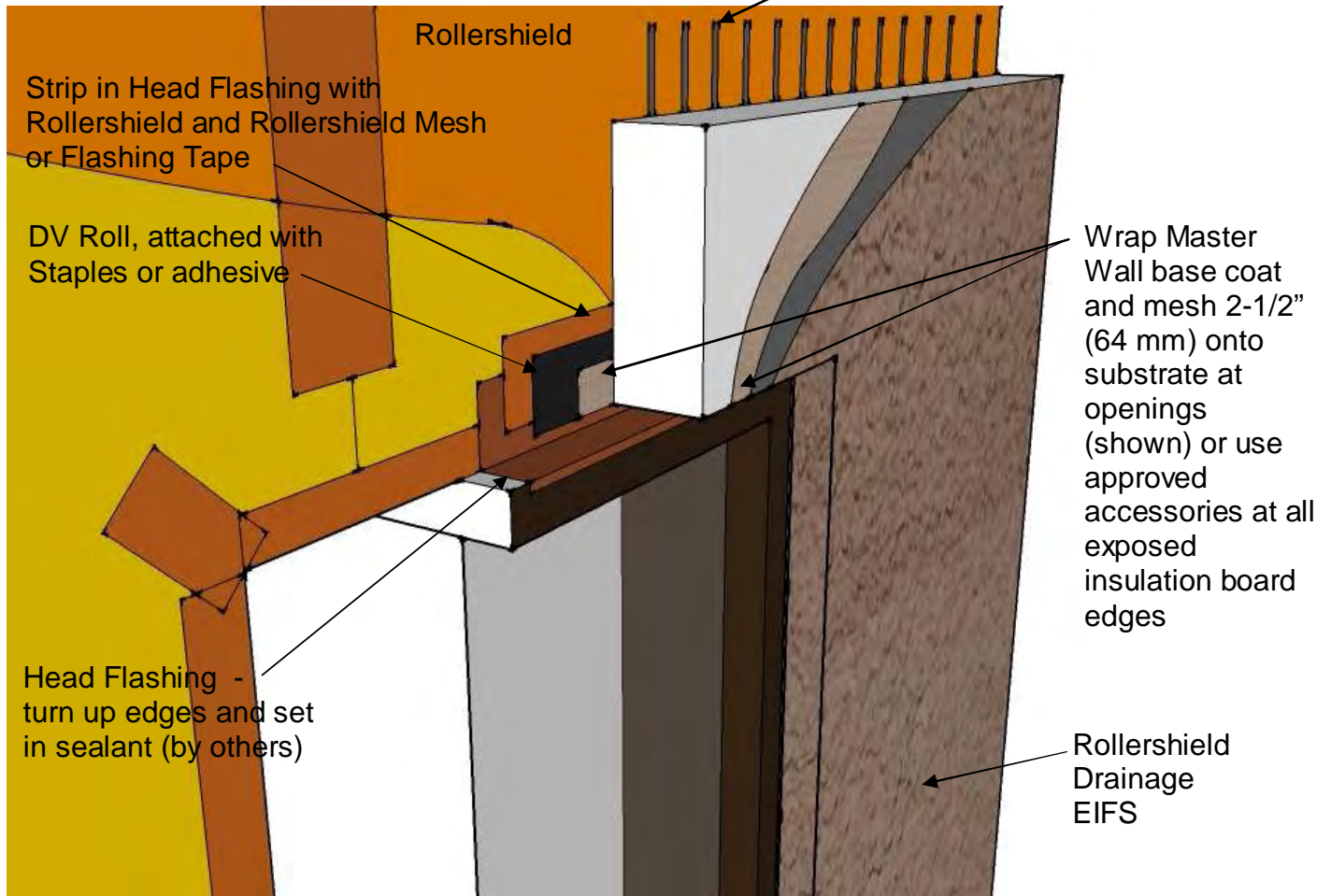
Conceptual Details with DV Roll

Corporate • P.O. Box 397 • Fortson • Georgia • 31808 • 800-755-0825 • FAX 706-569-6704

Technical • 800-760-2861

Application Note: Don't apply insulation adhesive where DV Roll is used. Also, it helps to notch or rasp the foam at this location to prevent bowing.

Master Wall Vertical Notched Trowel Adhesive



## RSDV-06 Typical Window Head Flashing

These drawings relay the conceptual conditions of Master Wall Systems and are not the construction drawings. Ultimately the design and detailing of an entire wall system is the responsibility of a professional. These details will guide the design professional in the use of Master Wall Products. Master Wall disclaims design, warranty or construction intent or responsibility.



## Rollershield Drainage™ EIFS

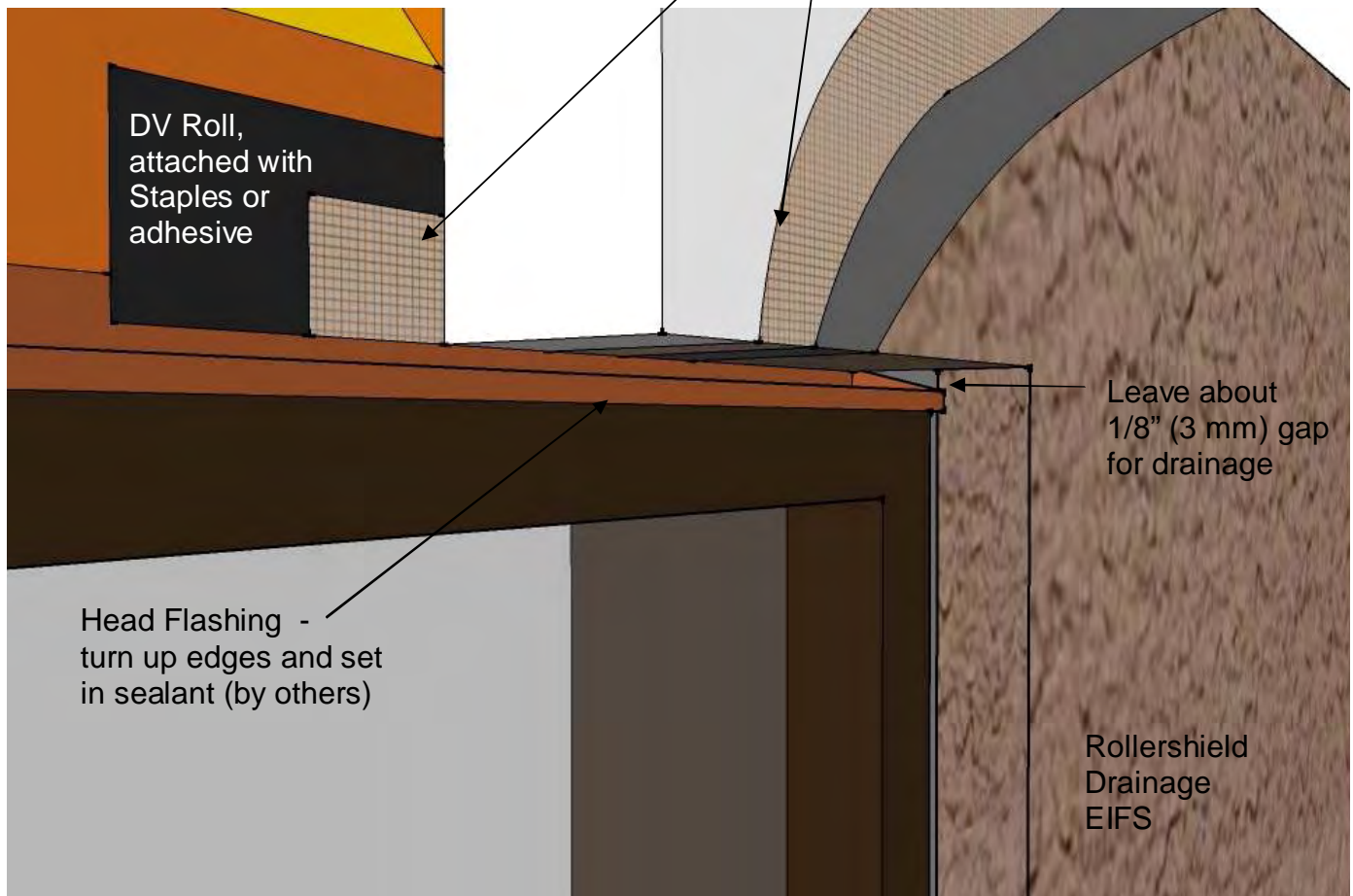
Conceptual Details with DV Roll

Corporate • P.O. Box 397 • Fortson • Georgia • 31808 • 800-755-0825 • FAX 706-569-6704

Technical • 800-760-2861

Application Note: Don't apply insulation adhesive where DV Roll is used. Also, it helps to notch or rasp the foam at this location to prevent bowing.

Wrap Master Wall base coat and mesh 2-1/2" (64 mm) onto substrate at openings (shown) or use approved accessories at all exposed insulation board edges



### RSDV-07 Typical Window Head Flashing

These drawings relay the conceptual conditions of Master Wall Systems and are not the construction drawings. Ultimately the design and detailing of an entire wall system is the responsibility of a professional. These details will guide the design professional in the use of Master Wall Products. Master Wall disclaims design, warranty or construction intent or responsibility.

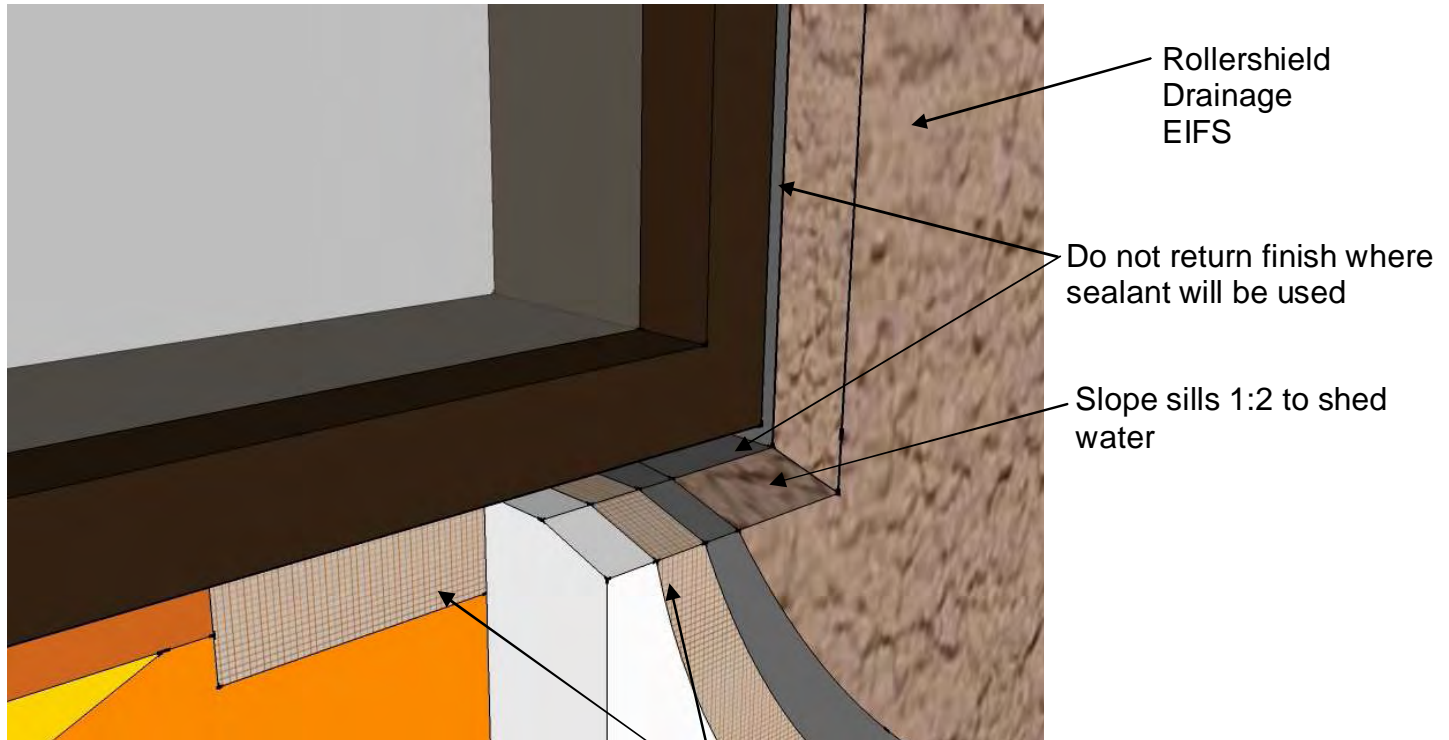


## Rollershield Drainage™ EIFS

Conceptual Details with DV Roll

Corporate • P.O. Box 397 • Fortson • Georgia • 31808 • 800-755-0825 • FAX 706-569-6704

Technical • 800-760-2861



**Notes:**

- Typical detailing for windows, doors and other openings
- Designer to size sealant joint for anticipated movement, minimum 1/2" (19 mm) sealant joint by sealant contractor
- Flashing may be required by others

Wrap Master Wall base coat and mesh 2-1/2" (64 mm) onto substrate at openings (shown) or use approved accessories at all exposed insulation board edges

### RSDV-08 Typical Window Sill Detail

These drawings relay the conceptual conditions of Master Wall Systems and are not the construction drawings. Ultimately the design and detailing of an entire wall system is the responsibility of a professional. These details will guide the design professional in the use of Master Wall Products. Master Wall disclaims design, warranty or construction intent or responsibility.



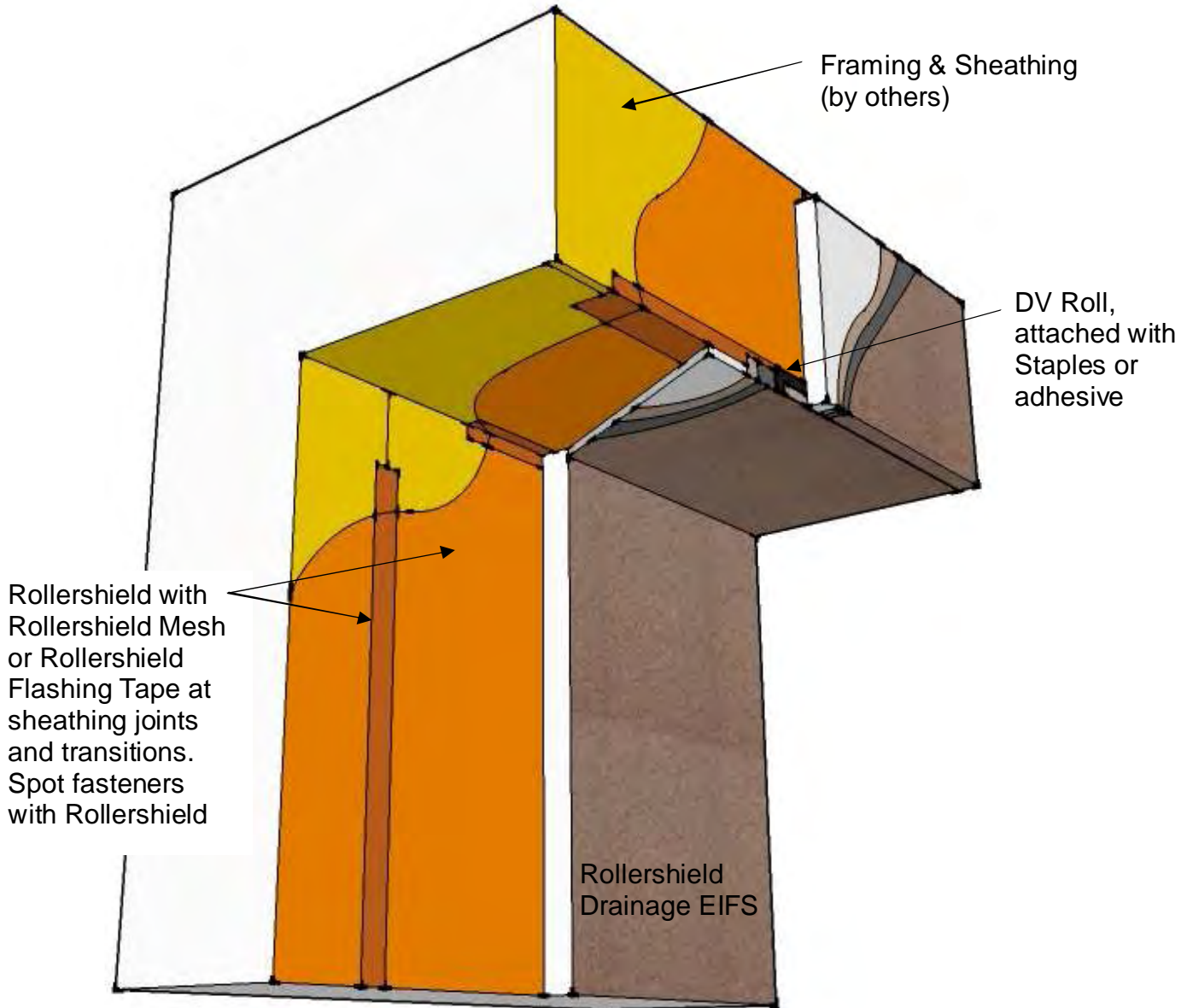


# Rollershield Drainage™ EIFS

Conceptual Details with DV Roll

Corporate • P.O. Box 397 • Fortson • Georgia • 31808 • 800-755-0825 • FAX 706-569-6704

Technical • 800-760-2861



## RSDV-09 Typical Soffit/Drip

These drawings relay the conceptual conditions of Master Wall Systems and are not the construction drawings. Ultimately the design and detailing of an entire wall system is the responsibility of a professional. These details will guide the design professional in the use of Master Wall Products. Master Wall disclaims design, warranty or construction intent or responsibility.



# Rollershield Drainage™ EIFS

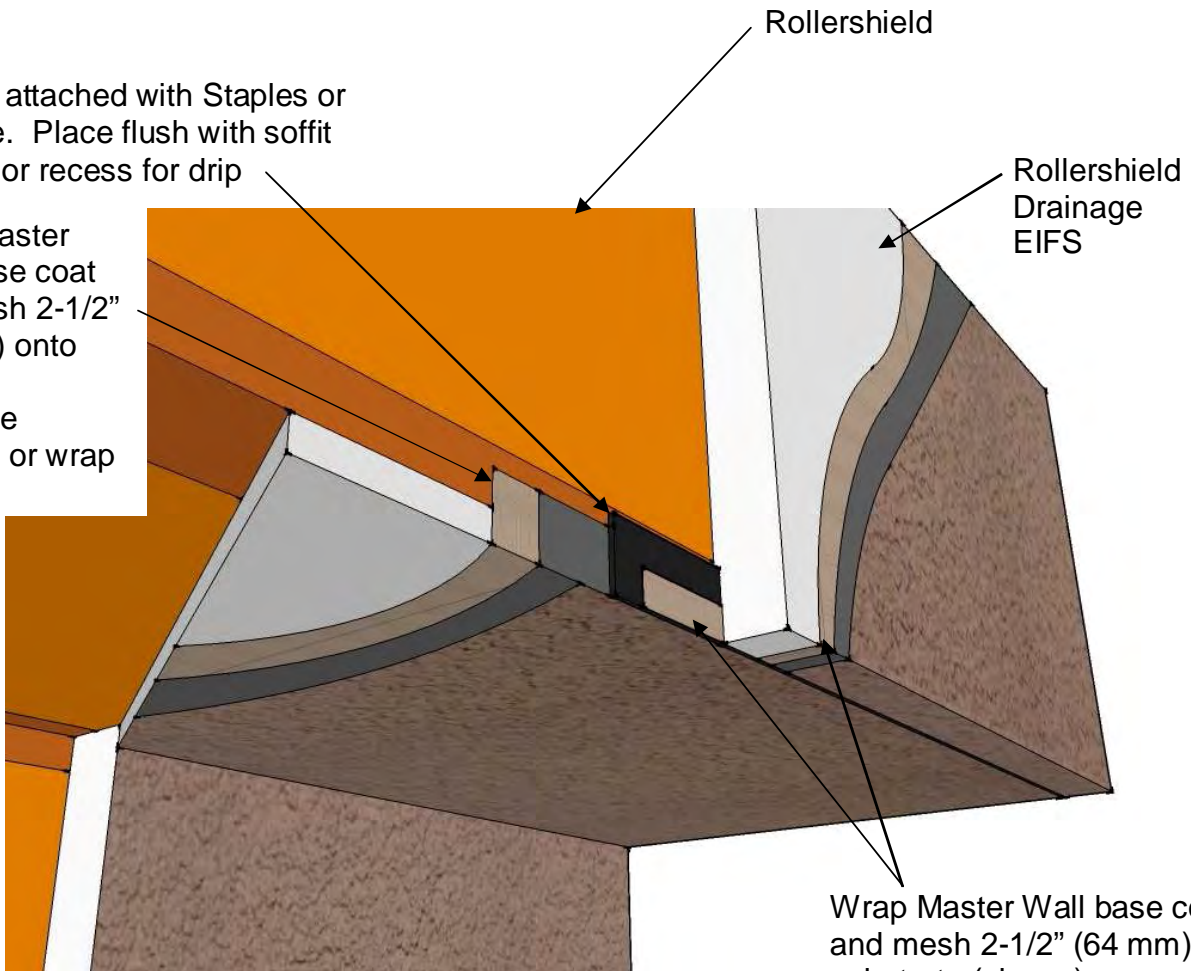
Conceptual Details with DV Roll

Corporate • P.O. Box 397 • Fortson • Georgia • 31808 • 800-755-0825 • FAX 706-569-6704

Technical • 800-760-2861

DV Roll, attached with Staples or adhesive. Place flush with soffit (shown) or recess for drip

Wrap Master Wall base coat and mesh 2-1/2" (64 mm) onto vertical substrate (shown) or wrap edge



Rollershield

Rollershield Drainage EIFS

Wrap Master Wall base coat and mesh 2-1/2" (64 mm) onto substrate (shown) or use approved accessories at all exposed insulation board

Application Note: Don't apply insulation adhesive where DV Roll is used. Also, it helps to notch or rasp the foam at this location to prevent bowing.

## RSDV-10 Typical Soffit/Drip Detail

These drawings relay the conceptual conditions of Master Wall Systems and are not the construction drawings. Ultimately the design and detailing of an entire wall system is the responsibility of a professional. These details will guide the design professional in the use of Master Wall Products. Master Wall disclaims design, warranty or construction intent or responsibility.



## Rollershield Drainage™ EIFS

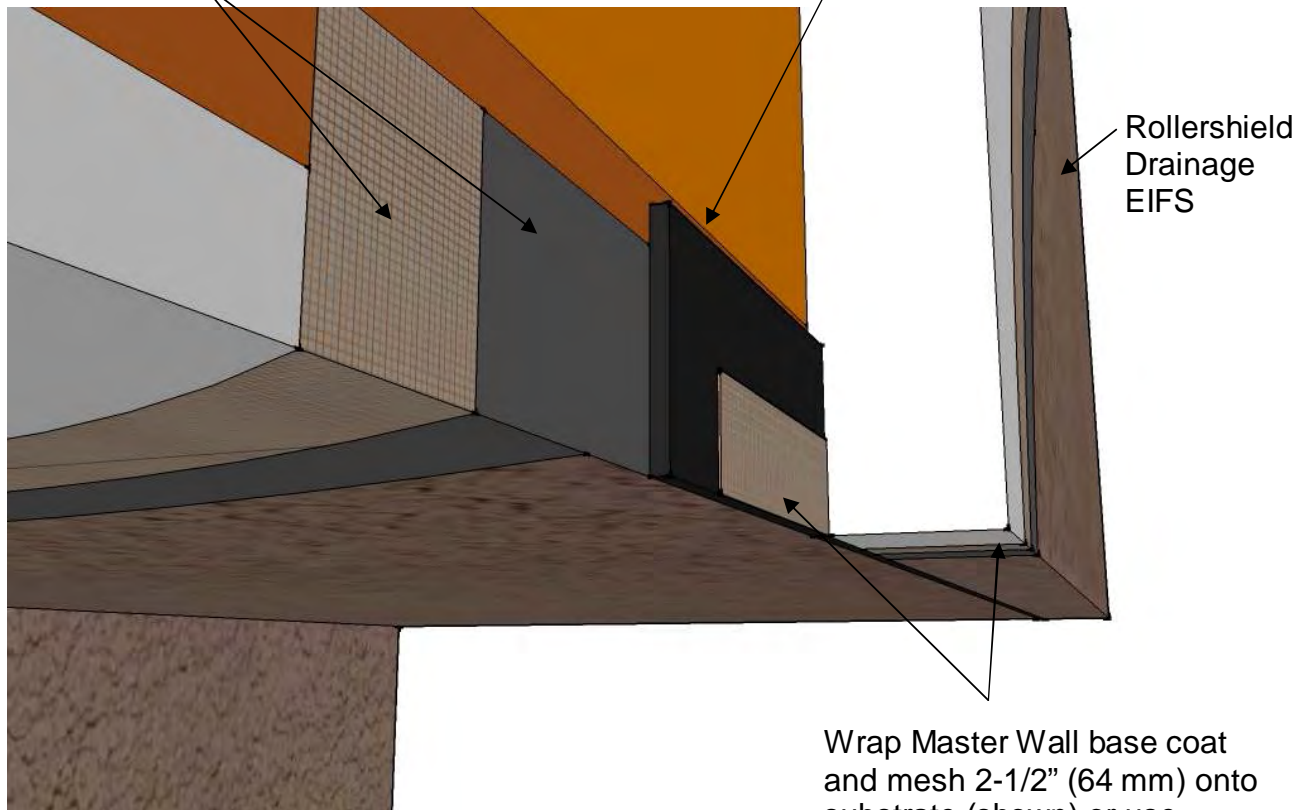
Conceptual Details with DV Roll

Corporate • P.O. Box 397 • Fortson • Georgia • 31808 • 800-755-0825 • FAX 706-569-6704

Technical • 800-760-2861

Wrap Master Wall base coat and mesh 2-1/2" (64 mm) onto vertical substrate (shown) or wrap edge

DV Roll, attached with Staples or adhesive. Place flush with soffit (shown) or recess for drip



Rollershield Drainage EIFS

Application Note: Don't apply insulation adhesive where DV Roll is used. Also, it helps to notch or rasp the foam at this location to prevent bowing.

Wrap Master Wall base coat and mesh 2-1/2" (64 mm) onto substrate (shown) or use approved accessories at all exposed insulation board

### RSDV-11 Typical Soffit Detail

These drawings relay the conceptual conditions of Master Wall Systems and are not the construction drawings. Ultimately the design and detailing of an entire wall system is the responsibility of a professional. These details will guide the design professional in the use of Master Wall Products. Master Wall disclaims design, warranty or construction intent or responsibility.

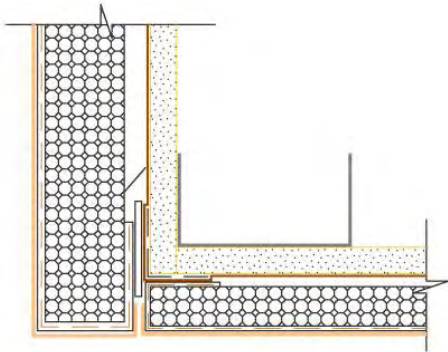


# Rollershield Drainage™ EIFS

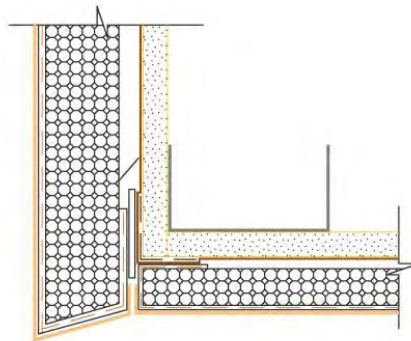
Conceptual Details with DV Roll

Corporate • P.O. Box 397 • Fortson • Georgia • 31808 • 800-755-0825 • FAX 706-569-6704

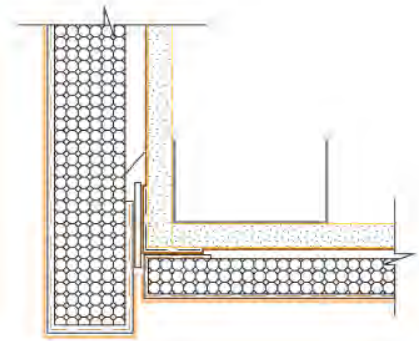
Technical • 800-760-2861



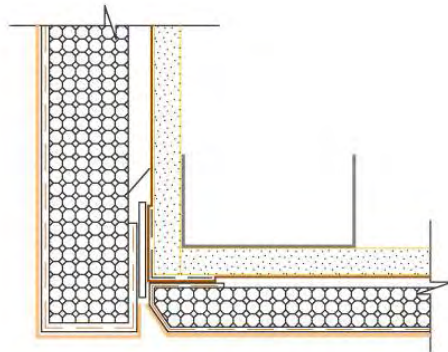
**Square** – Crisp edges with minimal visual focus



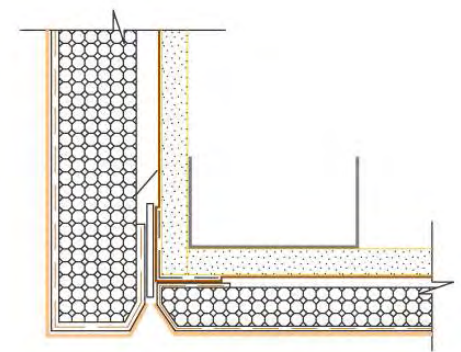
**Wedge** – The beveled edge creates a drip



**Dropped Fascia** – The fascia creates a distinct edge definition between the fascia and soffit and acts as



**Modern Drip** – A back bevel on the soffit creates a thin drip profile



**Recessed V** – A variation of the traditional drip but with drainage

## RSDV-12 Common Soffit/Drip Profiles

These drawings relay the conceptual conditions of Master Wall Systems and are not the construction drawings. Ultimately the design and detailing of an entire wall system is the responsibility of a professional. These details will guide the design professional in the use of Master Wall Products. Master Wall disclaims design, warranty or construction intent or responsibility.

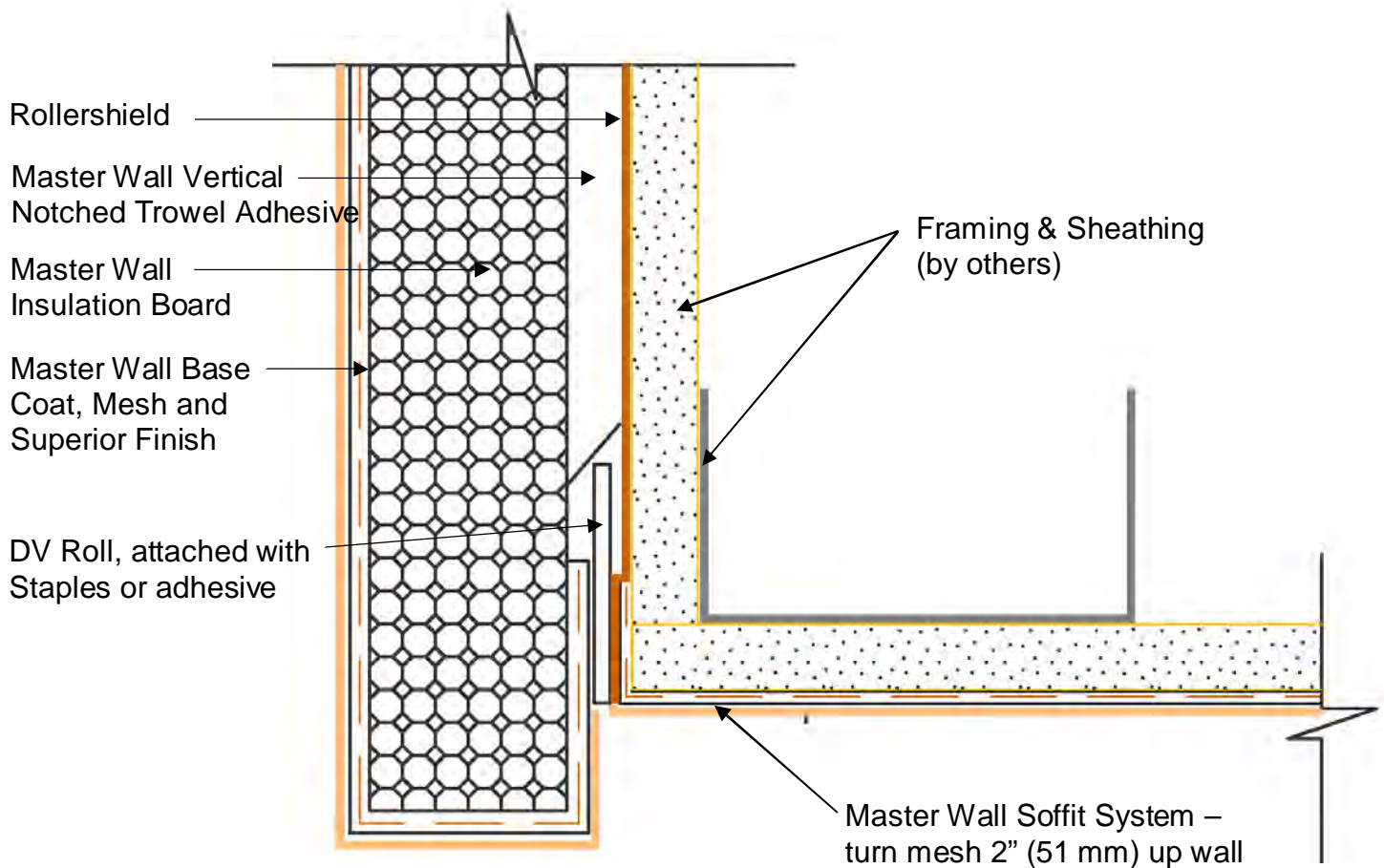


# Rollershield Drainage™ EIFS

Conceptual Details with DV Roll

Corporate • P.O. Box 397 • Fortson • Georgia • 31808 • 800-755-0825 • FAX 706-569-6704

Technical • 800-760-2861



Application Note: Don't apply insulation adhesive where DV Roll is used. Also, it helps to notch or rasp the foam at this location to prevent bowing.

## RSDV-13 Soffit/Drip with Soffit System

These drawings relay the conceptual conditions of Master Wall Systems and are not the construction drawings. Ultimately the design and detailing of an entire wall system is the responsibility of a professional. These details will guide the design professional in the use of Master Wall Products. Master Wall disclaims design, warranty or construction intent or responsibility.

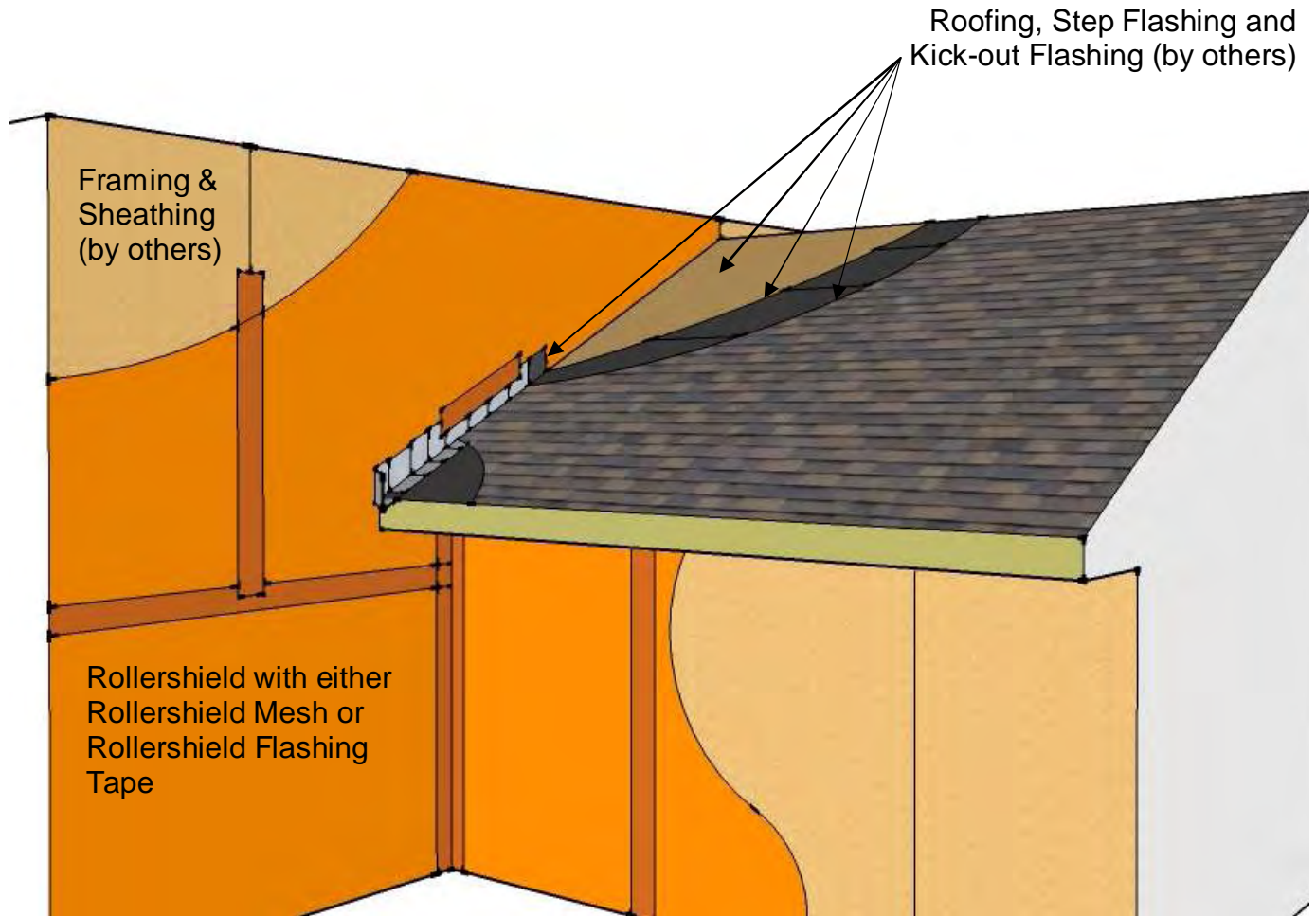


## **Rollershield Drainage™ EIFS**

*Conceptual Details with DV Roll*

*Corporate • P.O. Box 397 • Fortson • Georgia • 31808 • 800-755-0825 • FAX 706-569-6704*

*Technical • 800-760-2861*



### **RSDV-14 General Rollershield Application at Roof Edge**

These drawings relay the conceptual conditions of Master Wall Systems and are not the construction drawings. Ultimately the design and detailing of an entire wall system is the responsibility of a professional. These details will guide the design professional in the use of Master Wall Products. Master Wall disclaims design, warranty or construction intent or responsibility.

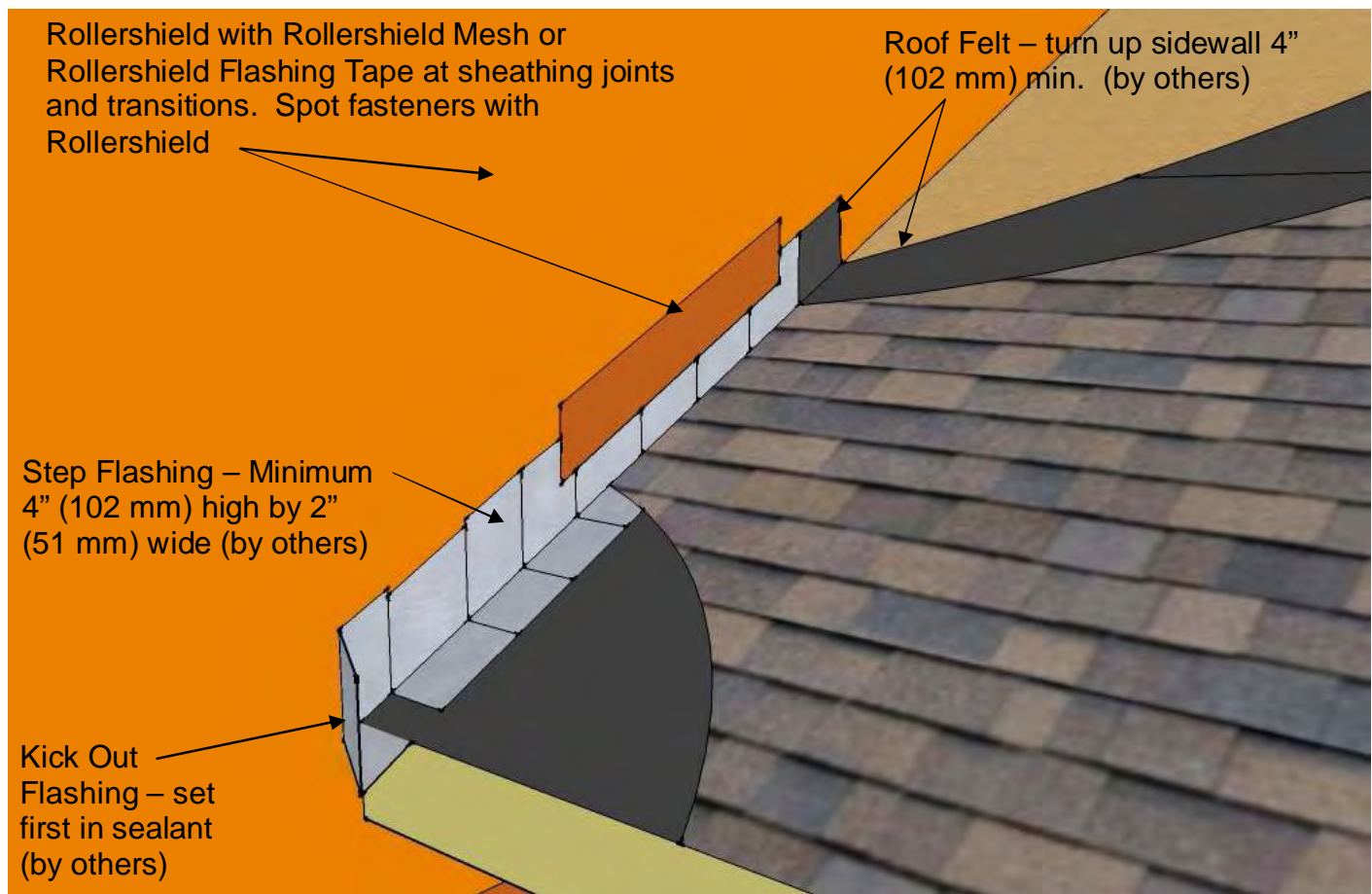


## **Rollershield Drainage™ EIFS**

*Conceptual Details with DV Roll*

*Corporate • P.O. Box 397 • Fortson • Georgia • 31808 • 800-755-0825 • FAX 706-569-6704*

*Technical • 800-760-2861*



### **RSDV-15 Typical Rollershield Application at Kick Out Flashing**

These drawings relay the conceptual conditions of Master Wall Systems and are not the construction drawings. Ultimately the design and detailing of an entire wall system is the responsibility of a professional. These details will guide the design professional in the use of Master Wall Products. Master Wall disclaims design, warranty or construction intent or responsibility.

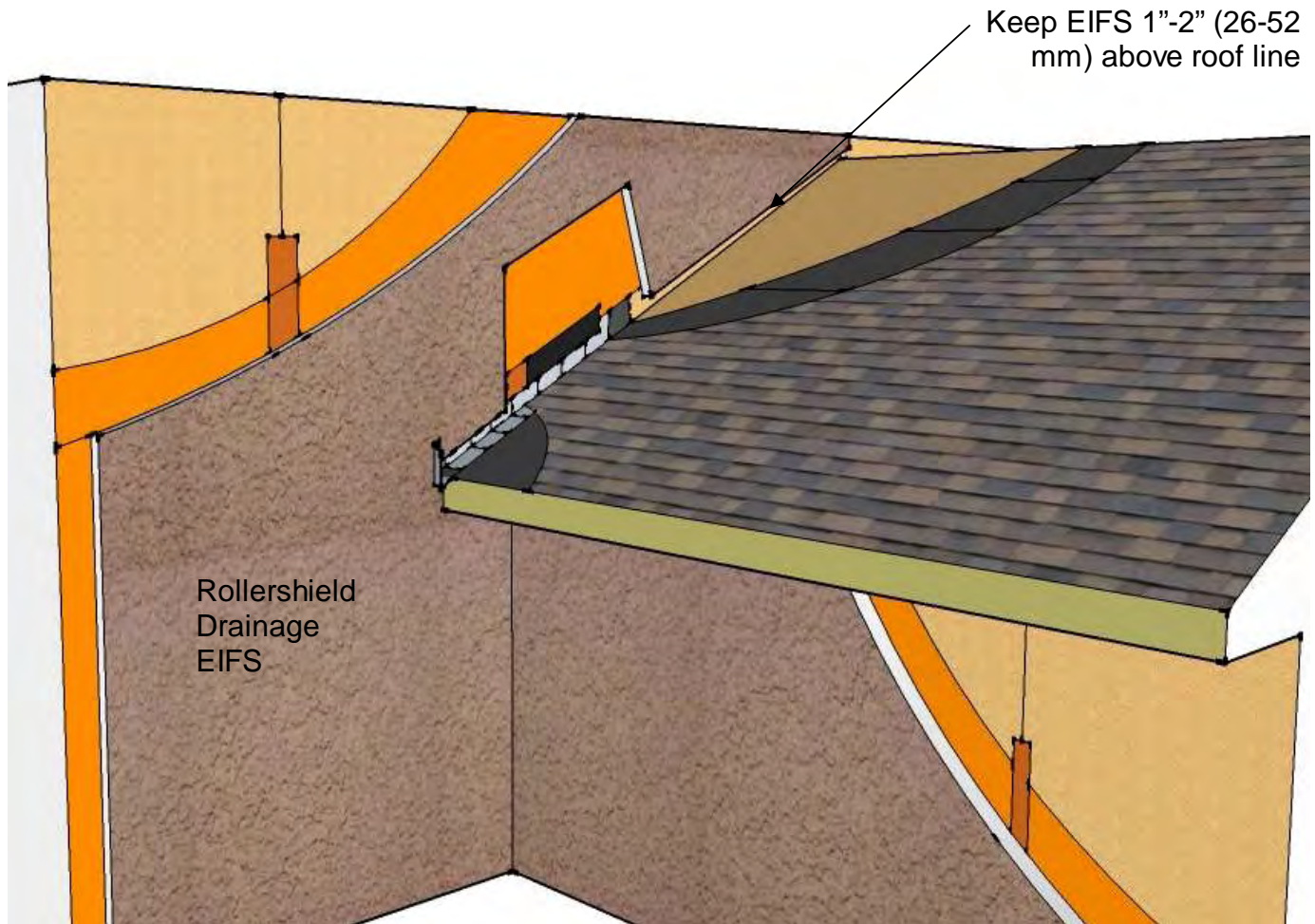


## **Rollershield Drainage™ EIFS**

*Conceptual Details with DV Roll*

*Corporate • P.O. Box 397 • Fortson • Georgia • 31808 • 800-755-0825 • FAX 706-569-6704*

*Technical • 800-760-2861*



### **RSDV-16 General Rollershield Application at Kick Out Flashing**

These drawings relay the conceptual conditions of Master Wall Systems and are not the construction drawings. Ultimately the design and detailing of an entire wall system is the responsibility of a professional. These details will guide the design professional in the use of Master Wall Products. Master Wall disclaims design, warranty or construction intent or responsibility.



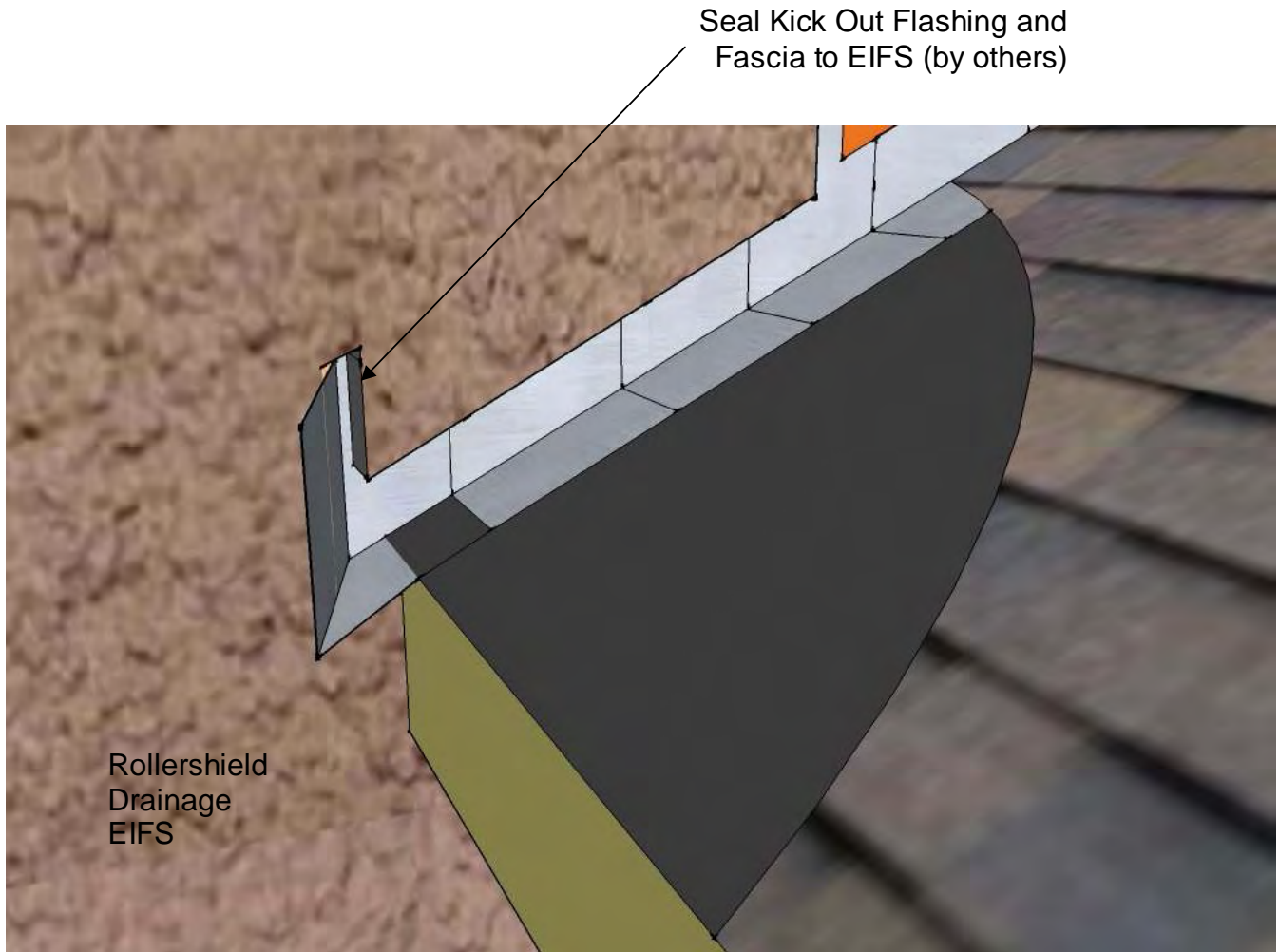


## **Rollershield Drainage™ EIFS**

*Conceptual Details with DV Roll*

*Corporate • P.O. Box 397 • Fortson • Georgia • 31808 • 800-755-0825 • FAX 706-569-6704*

*Technical • 800-760-2861*



### **RSDV-17 Detail at Kick Out Flashing**

These drawings relay the conceptual conditions of Master Wall Systems and are not the construction drawings. Ultimately the design and detailing of an entire wall system is the responsibility of a professional. These details will guide the design professional in the use of Master Wall Products. Master Wall disclaims design, warranty or construction intent or responsibility.



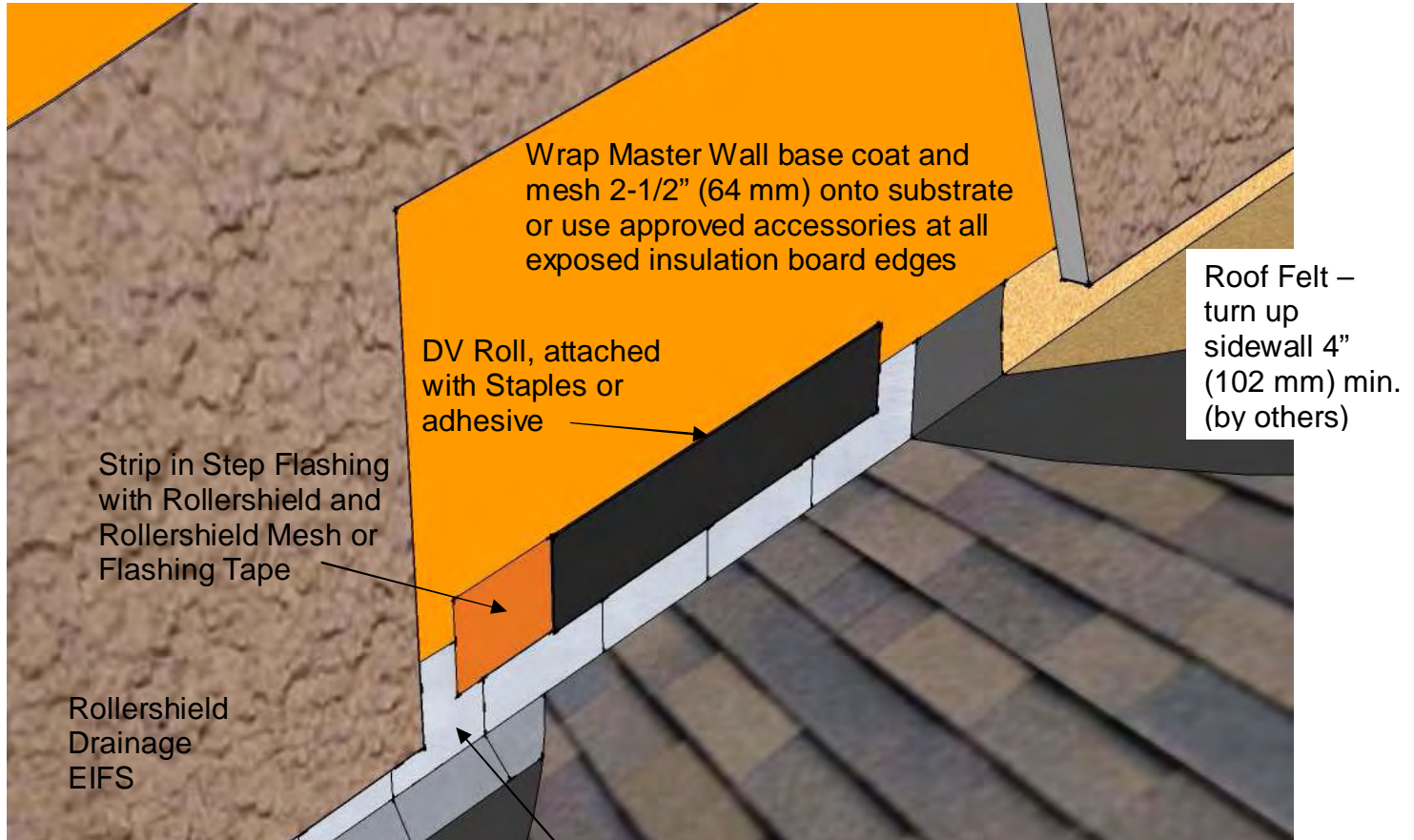
# Rollershield Drainage™ EIFS

Conceptual Details with DV Roll

Corporate • P.O. Box 397 • Fortson • Georgia • 31808 • 800-755-0825 • FAX 706-569-6704

Technical • 800-760-2861

Keep EIFS 1"-2" (26-52 mm) above roof line



Application Note: Don't apply insulation adhesive where DV Roll is used. Also, it helps to notch or rasp the foam at this location to prevent bowing.

Step Flashing - Minimum 4" (102 mm) high by 2" (51 mm) wide (by others)

## RSDV-18 Step Flashing Detail

These drawings relay the conceptual conditions of Master Wall Systems and are not the construction drawings. Ultimately the design and detailing of an entire wall system is the responsibility of a professional. These details will guide the design professional in the use of Master Wall Products. Master Wall disclaims design, warranty or construction intent or responsibility.