



Drainage Media

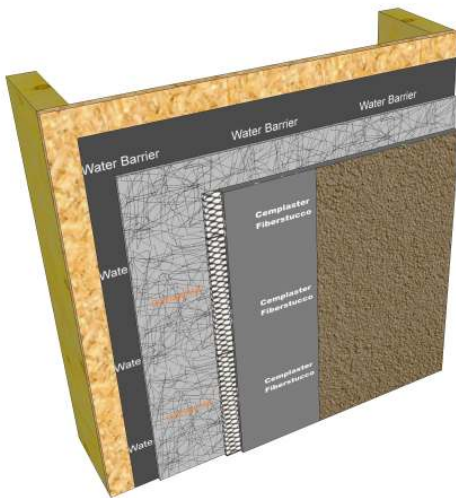
Systems

Aggre-flex Drainage EIFS
Cemplaster Fiberstucco
QRW1 Drainage EIFS
Stucco Cement Board Coatings

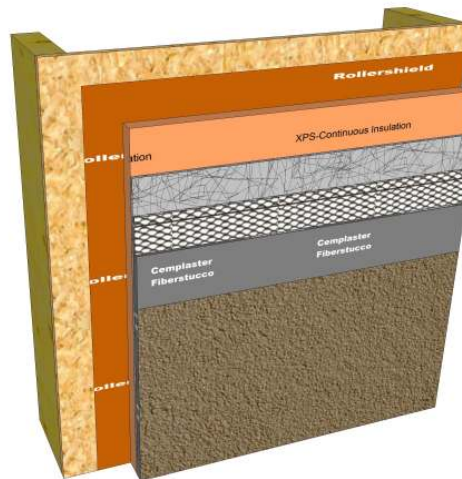
Approved Manufacturers

Advanced Building Products Inc.
Benjamin Obdyke
Cosella-Dorcken
Keene Building Products
Mortar Net Solutions/Clark Dietrich
Plastic Components

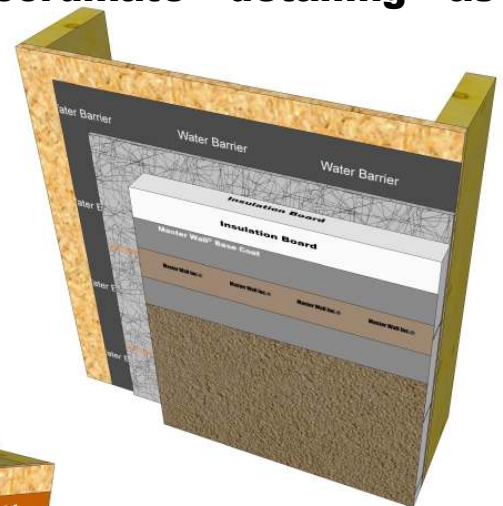
Drainage media has been used behind Master Wall® Systems for many years. The drainage media can vary from a very thin cross section material, a thicker version designed to prevent capillary action to a true ventilated wall cavity. The designs will vary and Master Wall® is available to help coordinate detailing as needed.



**Drainage Mat under
Cemplaster Fiberstucco**



**Drainage Mat under Insulated
Cemplaster Fiberstucco**



**Drainage Mat under
Aggre-flex Drainage EIFS**



Master Wall Inc.®
Building a Culture of Excellence

masterwall.com



Drainage Media

The following manufactures are approved by Master Wall Inc.®:

Manufacturer	Product	Type	Approved Systems	Comments
Advanced Building Products Inc. advancedbuildingproducts.com	Mortairvent	Rainscreen Mat with Backer Fabric, 6 mm & 10 mm	Aggre-flex Drainage EIFS, Cem-plaster Fiberstucco, Stucco Cement Board Coatings, QRW1 Drainage EIFS	Minimum 1–1/2" Insulation board required for EIFS. Two water barriers required under Master Wall stucco systems
	Benjamin Obdyke benjaminobdyke.com	Home Slicker	Rainscreen Mat	Aggre-flex Drainage EIFS, Cem-plaster Fiberstucco, Stucco Cement Board Coatings, QRW1 Drainage EIFS
Cosella-Dorken cosella-dorken.com	Home Slicker Plus Typar	Rainscreen Mat with water barrier	Aggre-flex Drainage EIFS, Cem-plaster Fiberstucco, Stucco Cement Board Coatings, QRW1 Drainage EIFS	Minimum 1–1/2" Insulation board required for EIFS, weather barrier required behind stuccos to prevent bonding to mat
	Home Slicker Stone & Stucco	Rainscreen Mat with mortar fabric	Cemplaster Stucco, OCS	Two water barriers required under Master Wall stucco systems
	Delta Dry	True Ventilated Wall Cavity	Aggre-flex Drainage EIFS, Cem-plaster Fiberstucco, Stucco Cement Board Coatings, QRW1 Drainage EIFS	Provide ventilation path for moisture migration. Minimum 1–1/2" Insulation board required for EIFS, weather barrier required behind stuccos to prevent bonding to Delta Dry
Keene Building Products keenebuilding.com	Drivall Rainscreen 020-1	Rainscreen Mat with mortar fabric	Aggre-flex Drainage EIFS, Cem-plaster Fiberstucco, Stucco Cement Board Coatings, QRW1 Drainage EIFS	Minimum 1–1/2" Insulation board required for EIFS, weather barrier required behind stuccos to prevent bonding to mat
	Drivall Rainscreen 10mm	Rainscreen Mat with mortar fabric	Aggre-flex Drainage EIFS, Cem-plaster Fiberstucco, Stucco Cement Board Coatings, QRW1 Drainage EIFS	Minimum 1–1/2" Insulation board required for EIFS, weather barrier required behind stuccos to prevent bonding to mat
	Drivall Rainscreen 075	Wide Spaced Rainscreen Mat	Cemplaster Fiberstucco	Two water barriers required under Master Wall stucco systems
	Drivall Rainscreen 075-1	Wide Spaced Rainscreen Mat with mortar fabric	Cemplaster Fiberstucco	Two water barriers required under Master Wall stucco systems
Moisture Management for Masonry/Clark Dietrich Building Systems	LathNet®	2.5 lb/sy Self Furring Metal Lath with Drainage Plane Mesh	Cemplaster Fiberstucco	Two water barriers required under Master Wall stucco systems
Plastic Components plasticcomponents.com	Ultra-Lath	Plastic Lath in sheets or rolls	Aggre-flex Drainage EIFS, Stucco Cement Board Coatings, QRW1 Drainage EIFS	Systems must be mechanically attached through plastic lath
	Ultra-Drain Mat UDM-40 (10 mm) UDM-25 (6 mm)	Rainscreen Mat with mortar fabric	Aggre-flex Drainage EIFS, Cem-plaster Fiberstucco, Stucco Cement Board Coatings, QRW1 Drainage EIFS	Minimum 1–1/2" Insulation board required for EIFS, weather barrier required behind stuccos to prevent bonding to mat
Varies	Varies	2.5#/sy metal lath fastened to substrate in accordance with ASTM C1063	Aggre-flex Drainage EIFS, QRW1 Drainage EIFS	Aggre-flex Drainage may be adhered to the metal lath with F&M or MBB Adhesives, others must be mechanically attached through metal lath.

Information contained in this product data sheet conforms to the standard detail recommendations and specifications for the installation of Master Wall Inc.® products and is presented in good faith. Master Wall Inc.® assumes no liability, expressed or implied as to the architecture, engineering, or workmanship of any project. This information may be concurrent with, or superseded by other applicable documents, such as specifications and details. Contact Master Wall Inc.® for the most current product information. ©2016 Master Wall Inc.®



PO Box 397 • Fortson • GA • 31808 • 800-755-0825 • Tech: 800-760-2861