



EIFS Accessories

Systems

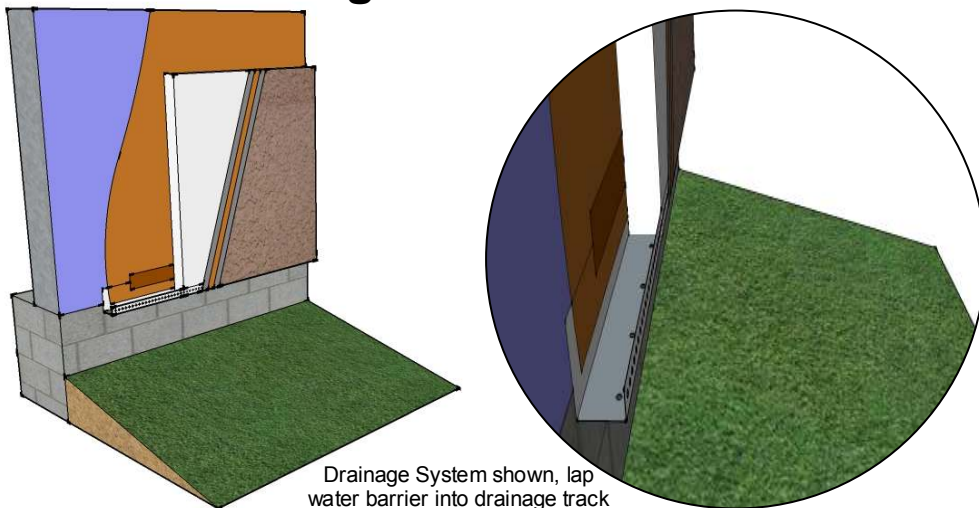
Aggre-flex EIFS
Aggre-flex Drainage EIFS
Commercial Drainage EIFS
QRW1 Drainage EIFS
Rollershield Drainage EIFS
Trowelshield Drainage EIFS

Plastic accessories are used as an alternate to backwrapping Exterior Insulation and Finish Systems (EIFS)

- **Eliminates backwrapping**
- **Drainage versions available**
- **UV Resistant**
- **Good bonding surface for sealants**

Vinyl Chloride Monomer

**Manufacture Locations:
verify with manufacturer**



Drainage System shown, lap water barrier into drainage track

Packaging: Typically 10' lengths

Weight: Varies

Typical Widths: 3/4" to 4" (19-102 mm)

Manufacturers

Amico Building Products 800-366-2642, www.amico-lath.com

Plastic Components 800-327-7077, www.plasticcomponents.com

Vinyl Corp. 800-648-4695, www.vinylcorp.com

Wind-Lock 800-872-5625, www.wind-lock.com

Product Test Standards

ASTM D1784, ASTM C1063, ASTM D4216, May not be suitable for non-combustible construction assemblies.

 **Master Wall Inc.[®]**
Building a Culture of Excellence
masterwall.com

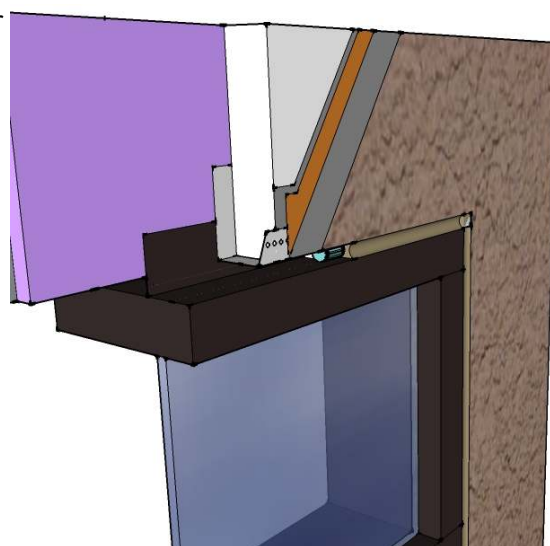


EIFS Accessories

Application Procedure

- EIFS accessories shall be erected true to line (allowable tolerance of 1/4" in 10' (6.4 mm in 3.05m), level, plumb, squared or curved).
- Casing beads at grade (drainage or non-drainage) shall be placed not less than 1" (25 mm) below the joint formed by the foundation and framing and placed not less than 6" (152 mm) above raw earth or 2" (51 mm) above paved surfaces.
- Drainage systems shall have the weather-resistive barrier lapped into the casing bead.
- Attach accessories to the substrate in such a manner as to ensure proper alignment during the application of the EIFS. Accessories shall be secured at not more than 16" (406 mm) centers for non-nailable substrates and 8" (203 mm) on center for nailable.
- Seal all butt joints, intersections, ends and corners at time of installation using an elastomeric sealant. Allow silicone-based sealant to fully cure before proceeding with insulation board application.

Place casing bead to allow for proper sealant joint width, typically 1/2" (13 mm).



For drainage systems place sealant joint behind drain holes.



Manufacturer	Starter Track w/ drip	Starter Track	Casing Bead	Drip Edges	Vents
Amico	AMSS100-16	AMST Series* AMSTA Series*	AMST Series	AMWDE Series	AMFBSVE Series
Plastic Components	iDT Series*, STDE Series, CB-L Series, CBWP-L Series*	VST Series, STWP Series*, ST Series	VST Series, STWP Series*, ST Series, CB Series, CBWP Series*	SB Series, WDA Series	548 Series, F548 Series, SMV Series
Vinyl Corp.	CBS-D Series, DCBS Series*, CBS-DWF Series*, DCBSV Series*	CBS-WF Series*, CBS-WB Series*	PRE Series, CBS Series	CBS-DWF Series*, DCBSV Series*	ADCV Series, DCV Series, FDCV Series, DC/CS Series, CBS Series
Wind-Lock	WSTDE Series*	UST Series*	WST Series, WSTWP Series*	WEMT Series	WSV Series

*Drainage Holes

Information contained in this product data sheet conforms to the standard detail recommendations and specifications for the installation of Master Wall Inc.® products and is presented in good faith. Master Wall Inc.® assumes no liability, expressed or implied as to the architecture, engineering, or workmanship of any project. This information may be concurrent with, or superseded by other applicable documents, such as specifications and details. Contact Master Wall Inc.® for the most current product information. ©2016 Master Wall Inc.®



PO Box 397 • Fortson • GA • 31808 • 800-755-0825 • Tech: 800-760-2861