

Technical Bulletin

Corporate: P.O. Box 397 • Fortson • Georgia • 31808 • 800-755-0825 • FAX 706-569-6704

MW# 129-210101

Topic: Repairing Master Wall® EIFS and Stucco

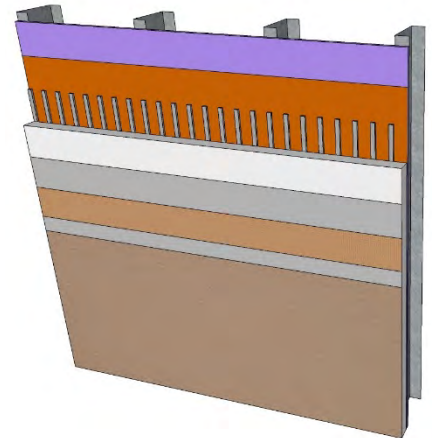
Damage to the system can occur from various sources to Master Wall® Systems. Typically, the damage falls into one of three categories:

- Finish Only
- Finish and Mesh/Base Coat, or Stucco Base Coat
- Finish, Mesh/Base Coat and Insulation, or Stucco and lath damage

The following repair procedures outline a proven repair method. It is important to keep in mind that texturing will vary by applicator technique and finish color can change due to environmental conditions. Color matching a sample is recommended for the most accurate repair possible.

Tools

- Knife
- Stainless Steel Trowel
- Stainless Steel Margin Trowel
- Tape
- Plastic Float
- Tarp/plastic for protecting other areas
- Face Shield
- Respiratory Protection
- Grinder or disk sander with #12 grit paper
- Mixer and Drill
- Toothpick to help with blending
- Paint Brush – to feather patch



Rollershield Drainage EIFS® shown, Aggre-flex EIFS, Aggre-flex Drainage EIFS, ICF Coating System, QRW1 Drainage EIFS are similar in design.



Cemplaster Fiberstucco shown, Stucco Cement Board Coatings, Uninsulated Finish System and Soffit System are similar in design.

Disclaimer

This Technical Bulletin is published for general informational purposes only and is not intended to imply that these are the only materials, procedures, or methods, which are available or suitable. Materials, procedures, or methods may vary according to the particular circumstances, local building code requirements, design conditions, or statutory and regulatory requirements. While the information in this Technical Bulletin is believed to be accurate and reliable, it is presented without guarantee or responsibility on the part of Master Wall Inc.®

masterwall.com



Technical Bulletin

Corporate: P.O. Box 397 • Fortson • Georgia • 31808 • 800-755-0825 • FAX 706-569-6704

Materials (vary, depending upon application)

- F&M – adhesive and base coat
- MBB – dry bagged base coat
- QSMBB – quick setting dry bagged base coat
- Cemplaster Fiberstucco
- BA57 Bonding Agent
- Aggre-flex Insulation – same thickness as original EIFS
- Aggre-flex Mesh – to match existing mesh type
- Lath to match existing stucco
- Superior Finish to match existing texture, tinted to closely match original color

Patching Expectations

When repairing EIFS and stucco keep in mind that the patch will restore the function and performance of the system. The aesthetics of the patch can vary in color or texture. If there is an expectation of reducing or eliminating the patch entirely, consider the following options in addition to the repair:

- Coating the area corner-to-corner with a matching Master Wall® coating to match the color and help it blend in. This will not change the texture but goes a long way to minimizing the look of the repair. Please reference our cleaning and maintenance bulletin for recommended coatings.
- Advanced strategies for eliminating the patch entirely will require base coat, possible mesh, and a new finish. The area should be finishes corner-to-corner for best results.
- If you have a special condition, please contact us at Master Wall® for specific recommendations.

Finish Repairs

Minor finish damage can usually be touched up with a matching finish or from a retained pail. These types of repairs would include dings and smudges. The finish color may look fresher or different at first but can blend in over time.

Disclaimer

This Technical Bulletin is published for general informational purposes only and is not intended to imply that these are the only materials, procedures, or methods, which are available or suitable. Materials, procedures, or methods may vary according to the particular circumstances, local building code requirements, design conditions, or statutory and regulatory requirements. While the information in this Technical Bulletin is believed to be accurate and reliable, it is presented without guarantee or responsibility on the part of Master Wall Inc.®

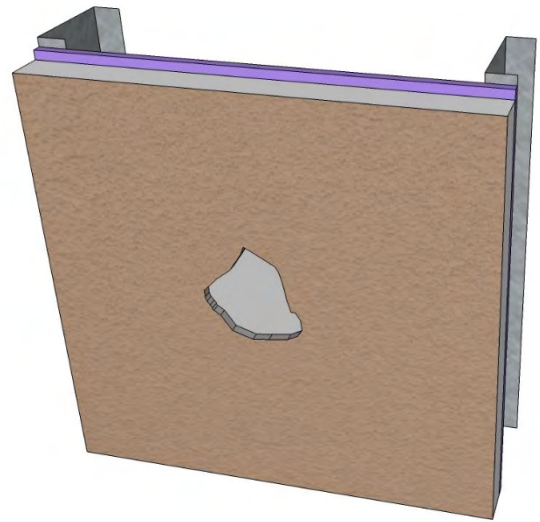
masterwall.com

Technical Bulletin

Corporate: P.O. Box 397 • Fortson • Georgia • 31808 • 800-755-0825 • FAX 706-569-6704

CIFS® and EIFS Repairs

Typical punctured or damaged area. Typical repairs may include damage to the lamina (base coat, mesh, and finish) and damage to the insulation board. In extreme cases damage to the water barrier and sheathing may happen requiring structural repair.

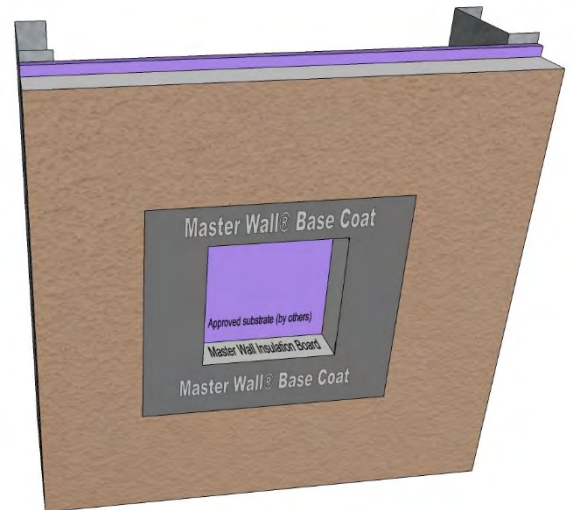


Mark out the section to be removed, usually squaring it off. For best results, never patch an area less than the length of your trowel, unless only touching up.

Wear face and dust protection and protect surrounding areas. Use a disk sander with #12 grit sandpaper to remove the finish down to the Base Coat layer. At least 3" (7.6 cm) of base coat needs to be exposed beyond the patch area.

Cut through the base coat around the puncture as straight as possible.

Remove the damaged insulation board down to the substrate.



Disclaimer

This Technical Bulletin is published for general informational purposes only and is not intended to imply that these are the only materials, procedures, or methods, which are available or suitable. Materials, procedures, or methods may vary according to the particular circumstances, local building code requirements, design conditions, or statutory and regulatory requirements. While the information in this Technical Bulletin is believed to be accurate and reliable, it is presented without guarantee or responsibility on the part of Master Wall Inc.®

masterwall.com

Technical Bulletin

Corporate: P.O. Box 397 • Fortson • Georgia • 31808 • 800-755-0825 • FAX 706-569-6704

CIFS® and EIFS Repairs

Cut a piece of insulation board to fit tightly into the hole. Apply a coating of Master Wall® Base Coat or other approved adhesive for the substrate type to the back of the insulation piece with the proper trowel and insert it into the prepared area.

Rasp the insulation board flush with the surrounding area.

Cut a replacement layer of fabric allowing a 2-1/2" (6.3 cm) overlap onto the existing base coat.

Apply Master Wall® base coat to the repair area. Embed mesh into the wet base coat mixture and trowel smooth.

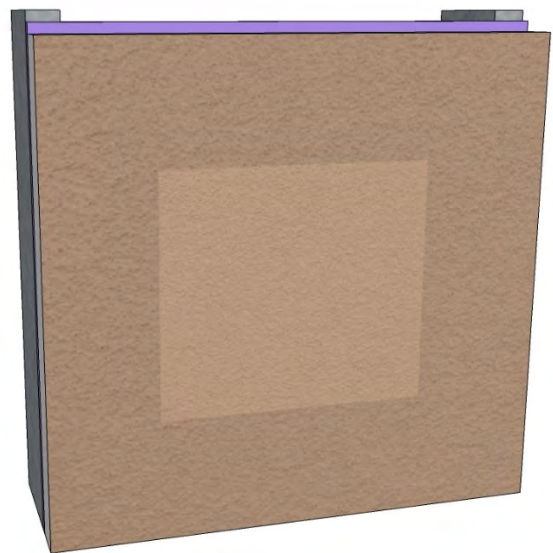
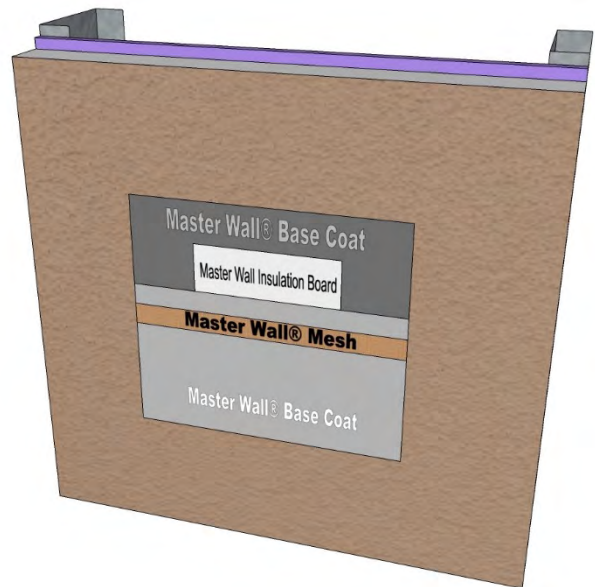
Feather the edges of the fabric ¼" from the edge of the existing finish being careful not to lap onto the finish. Let dry before applying the new finish.

Trowel-apply the Superior Finish being sure it butts up against the existing finish. Do not overlap it. Tape can be used along the edge of the existing finish for added protection. Remove the tape immediately after finishing and feather as shown.

Float the finish to achieve the same texture as the surrounding areas. Feather the edges of the patch into the existing finish to obtain a tight seal. Avoid building up the finish onto the existing finish taking care to obtain the same thickness and texture continuity as the original.

Disclaimer

This Technical Bulletin is published for general informational purposes only and is not intended to imply that these are the only materials, procedures, or methods, which are available or suitable. Materials, procedures, or methods may vary according to the particular circumstances, local building code requirements, design conditions, or statutory and regulatory requirements. While the information in this Technical Bulletin is believed to be accurate and reliable, it is presented without guarantee or responsibility on the part of Master Wall Inc.®



Technical Bulletin

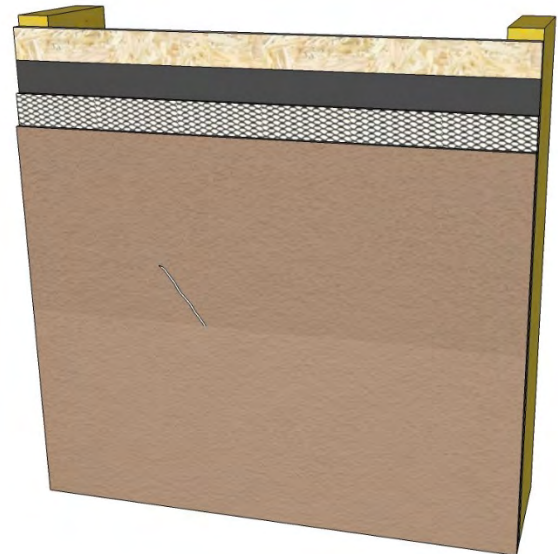
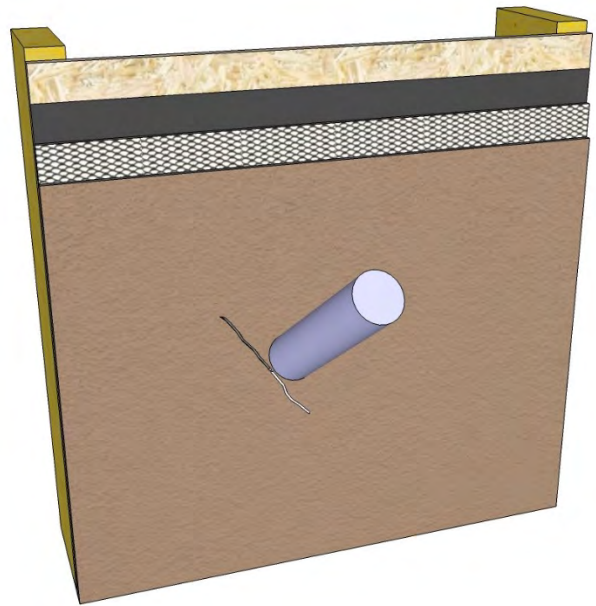
Corporate: P.O. Box 397 • Fortson • Georgia • 31808 • 800-755-0825 • FAX 706-569-6704

Cemplaster Fiberstucco Crack Repair

Hairline cracks are more or less typical for stucco applications. These are not normally reparable, but they can be minimized by coating with Master Wall® Elasto-flex coating or be left as-is.

Larger structural type cracks, usually greater than 1/16" (1.6 mm) can be filled with a paintable sealant such as DAP® Alex Plus®, a polyurethane type of sealant or any sealant that is paintable. Do not use acrylic sealants.

Rake the crack of loose materials, then fill with the sealant and allow to dry. Paint to match surrounding area or for best results coat the wall corner-to-corner with a Master Wall® coating to help it blend in better.



Disclaimer

This Technical Bulletin is published for general informational purposes only and is not intended to imply that these are the only materials, procedures, or methods, which are available or suitable. Materials, procedures, or methods may vary according to the particular circumstances, local building code requirements, design conditions, or statutory and regulatory requirements. While the information in this Technical Bulletin is believed to be accurate and reliable, it is presented without guarantee or responsibility on the part of Master Wall Inc.®

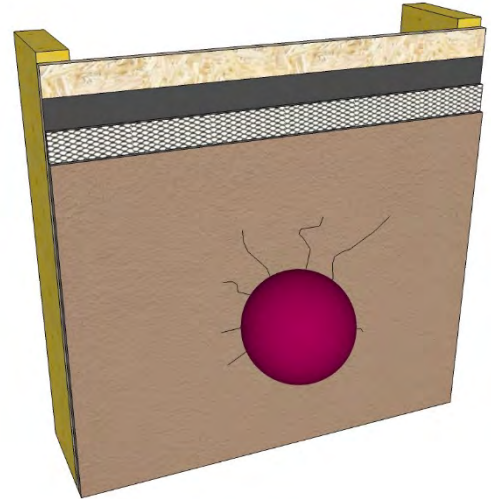
masterwall.com

Technical Bulletin

Corporate: P.O. Box 397 • Fortson • Georgia • 31808 • 800-755-0825 • FAX 706-569-6704

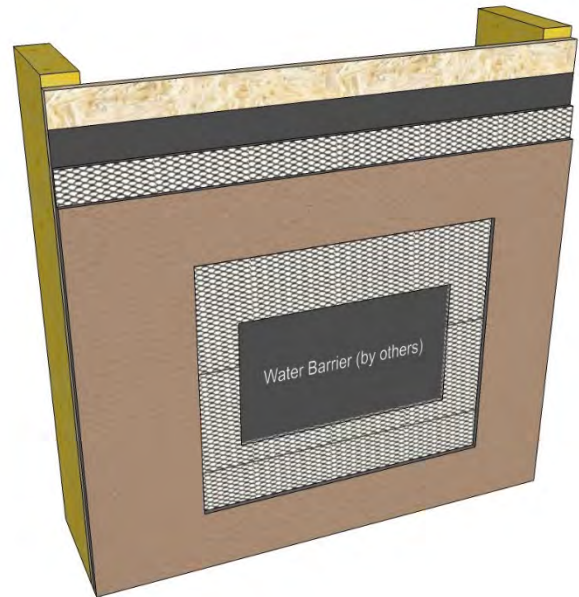
Cem plaster Fiberstucco Repairs

Being heavy and dense, impact damage to stucco may involve some structural damage. Consult an architect or engineer as needed.



Mark out the section to be removed, usually squaring it off. For best results, never patch an area less than the length of your trowel, unless only touching up.

Wear face and dust protection and protect surrounding areas. Carefully cut using a diamond cutting tool down to the lath, then cut out and remove damaged lath. Size the opening so at least 2" (5 cm) of lath is exposed if replacing the lath. Inspect water barrier for damage and repair if needed.



Disclaimer

This Technical Bulletin is published for general informational purposes only and is not intended to imply that these are the only materials, procedures, or methods, which are available or suitable. Materials, procedures, or methods may vary according to the particular circumstances, local building code requirements, design conditions, or statutory and regulatory requirements. While the information in this Technical Bulletin is believed to be accurate and reliable, it is presented without guarantee or responsibility on the part of Master Wall Inc.®

masterwall.com

Technical Bulletin

Corporate: P.O. Box 397 • Fortson • Georgia • 31808 • 800-755-0825 • FAX 706-569-6704

Cemplaster Fiberstucco Repairs

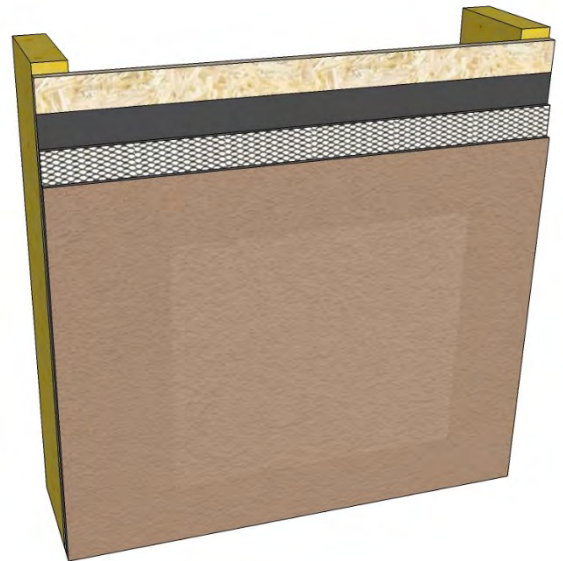
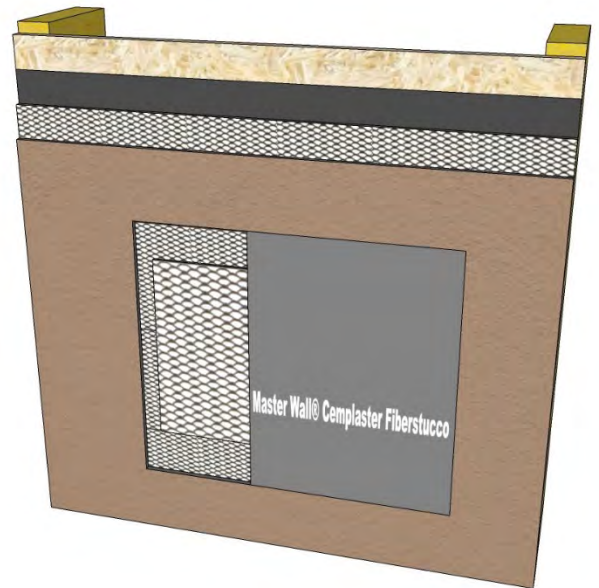
Wire tie new lath to the old lath, lapping it by at least 1" (2.5 cm).

Where the stucco has been cut apply a thin layer of Master Wall® BA57 bonding agent to help with bond.

Apply a scratch and brown coat of Master Wall® Cemplaster Fiberstucco level to the old stucco.

Trowel-apply the Superior Finish being sure it butts up against the existing finish. Do not overlap it. Tape can be used along the edge of the existing finish for added protection. Remove the tape immediately after finishing and feather as shown.

Float the finish to achieve the same texture as the surrounding areas. Feather the edges of the patch into the existing finish to obtain a tight seal. Avoid building up the finish onto the existing finish taking care to obtain the same thickness and texture continuity as the original.



Disclaimer

This Technical Bulletin is published for general informational purposes only and is not intended to imply that these are the only materials, procedures, or methods, which are available or suitable. Materials, procedures, or methods may vary according to the particular circumstances, local building code requirements, design conditions, or statutory and regulatory requirements. While the information in this Technical Bulletin is believed to be accurate and reliable, it is presented without guarantee or responsibility on the part of Master Wall Inc.®

masterwall.com