



Technical Bulletin

Corporate: P.O. Box 397 • Fortson • Georgia • 31808 • 800-755-0825 • FAX 706-569-6704

MW# 141-210201

Topic: Prefabricated Architectural Shapes for use with Master Wall® Systems

Easily applied trims and decorations are one of many benefits of using Master Wall® as a cladding. In the past decorative shapes were made in stucco using metal lath, wood and a pattern called a “screed”. Now you can order insulation board custom cut to any pattern you can draw from almost any insulation manufacturer.

Several companies have strived to make the installation process even easier by manufacturing the custom cut insulation along with a protective coating of reinforced base coat, urethane, or polymers. Some companies such as Foam Systems Inc. can also pre-finish the pieces and offers specialty trims such as prefabricated cornice corners for a neater job.

These shapes are easier to install but may not offer the performance of a Master Wall System, especially fire, impact resistance and durability. Master Wall suggests using the pre-coated shapes as an accessory for the wall and not an integrated part of the system. This means that the Master Wall System should run continuously under the shape. Using this technique, a failure in the shape will not mean wall system failure. It would also simplify any warranty claims against an accessory manufacturer.

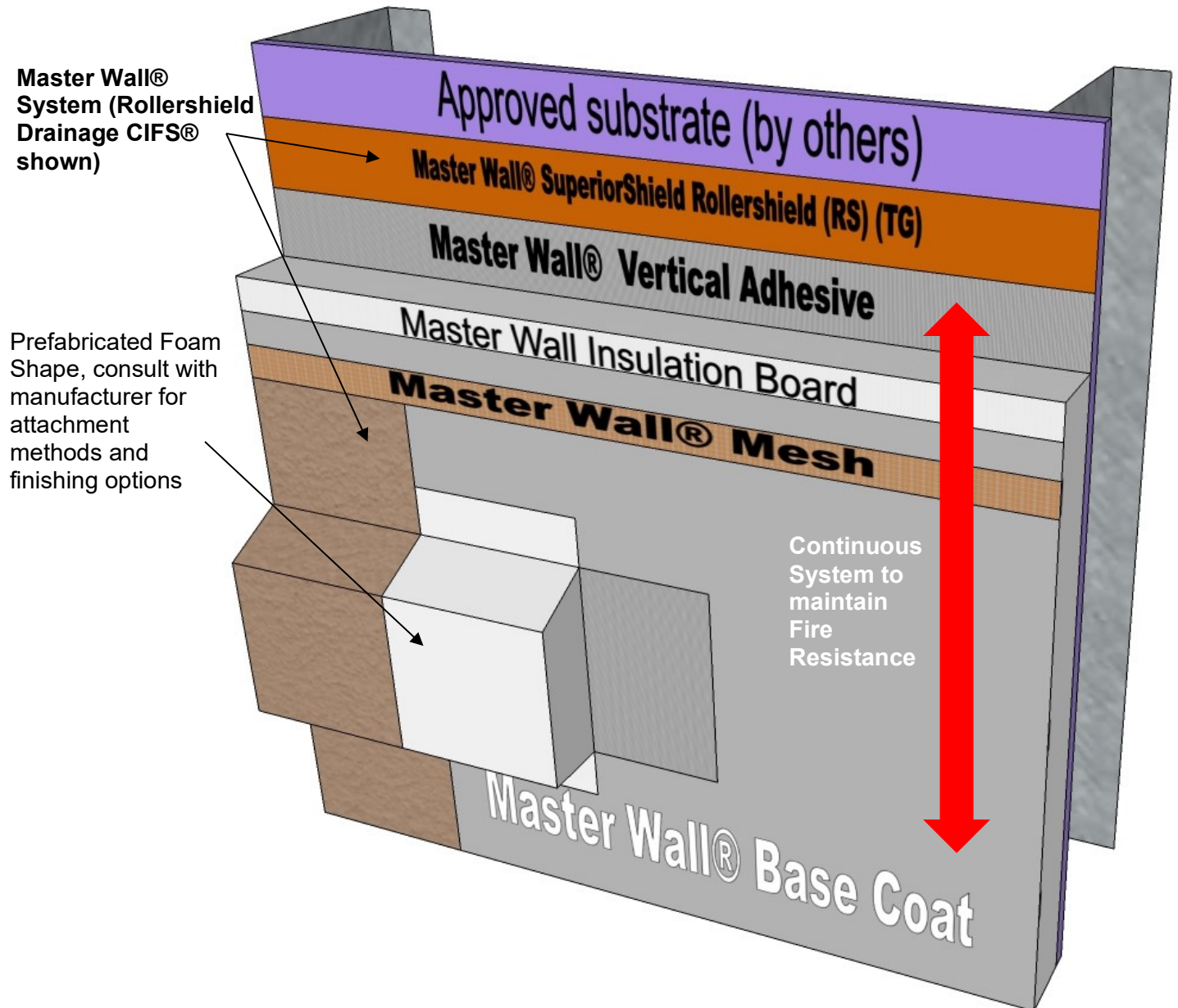
Pre-coated shapes should be installed according to the shape manufacturer’s instructions. Please contact the specific manufacturer for recommendations and Master Wall for any coordination concerns.

Disclaimer

This Technical Bulletin is published for general informational purposes only and is not intended to imply that these are the only materials, procedures, or methods, which are available or suitable. Materials, procedures, or methods may vary according to the particular circumstances, local building code requirements, design conditions, or statutory and regulatory requirements. While the information in this Technical Bulletin is believed to be accurate and reliable, it is presented without guarantee or responsibility on the part of Master Wall Inc.®

masterwall.com

System Detail



PFS-01 Prefabricated Foam Shape Detail

These drawings relay the conceptual conditions of Master Wall® Systems and are not the construction drawings. Ultimately the design and detailing of an entire wall system is the responsibility of a professional. These details will guide the design professional in the use of Master Wall® Products. Master Wall disclaims design, warranty or construction intent or responsibility. **Bold or Brand Name = Master Wall® Product.** ©2021 Master Wall Inc.®