

Technical Bulletin

Corporate: P.O. Box 397•Fortson•Georgia•31808•800-755-0825•FAX 706-569-6704

Technical: 800-760-2861

MW# 173-050115

Topic: Bonding to Painted Surfaces

Adhering Master Wall® Coatings or EIFS to an existing painted surface will require bond testing. Since we in no way guarantee bond of the paint to the substrate you need to carefully evaluate the surface and the designer, specifier, applicator and owner/specifier assumes responsibility should failures occur. **Any Master Wall warranty ends where the paint begins.** The methods shown here are basic in nature and there are more sophisticated means of evaluating the surfaces. If your project requires a high degree of evaluation, please contact a qualified engineer for a full evaluation.

Items Needed

Utility Knife
Duct Tape
Lead check test kit (optional)
Denatured Alcohol
Paint Thinner
Clean rag
Cleaning Solution
Master Wall BA57
Master Wall Adhesive or Coating
Master Wall Standard Mesh
Pencil or Pen

We recommend the following procedures for determining the paint type and application of Master Wall® materials:

Paint Bond Check

Since a manufacturer's warranty begins where the paint ends, checking the paint type and bond is an important part of predicting long-term performance. Of course, the surface needs to be clean and dry with no peeling, powdering or scaling. The paint must be gloss free.

To check paint bond cut an "X" on the surface with a utility knife. Press some duct tape over the cut area and pull off at a 90-degree angle. If none to a small amount of paint is visible on the duct tape in the X location this indicates that the paint bond is good. If more paint comes off the bond is not acceptable and alternate methods will need to be considered.



Disclaimer

This Technical Bulletin is published for general informational purposes only and is not intended to imply that these are the only materials, procedures, or methods, which are available or suitable. Materials, procedures, or methods may vary according to the particular circumstances, local building code requirements, design conditions, or statutory and regulatory requirements. While the information in this Technical Bulletin is believed to be accurate and reliable, it is presented without guarantee or responsibility on the part of Master Wall Inc. ®

masterwall.com

Technical Bulletin

Corporate: P.O. Box 397•Fortson•Georgia•31808•800-755-0825•FAX 706-569-6704

Technical: 800-760-2861

Paint Type Check

Check the paint type. In our experience there are three paint types we encounter in the field; acrylic (latex), oil (alkyd) and epoxy. Within these three products quality can vary wildly so be sure to evaluate the surface quality for chalking, cracking and other considerations that would affect the overall bond to new materials. In general, latex paints remain flexible through their life cycle while oil paints tend to become more brittle.

Check for the material type by rubbing first with denatured alcohol (acrylic test), then paint thinner (oil test). When rubbed the surface should look significantly cleaner and the paint should rub off on the rag with one of the two solutions. If nothing is achieved with either, the surface is most likely an epoxy and bond won't be acceptable without mechanical abrasion to a clean substrate.

Paint Type	Solvent	Results	Adhesion Potential
Acrylic (Latex)	Denatured Alcohol	Paint color visible on rag	Good
Oil (Alkyd)	Paint Thinner	Paint color visible on rag	Marginal, not recommended
Epoxy	Denatured Alcohol and Paint Thinner	No paint color visible with either solvent	Not Acceptable

Now might be a good time to check for lead with a test kit should removal be necessary. For additional information go to the [EPA web site](#).



Bond Test over an acrylic paint: Mineral spirits did not remove any of the coating, denatured alcohol did

Disclaimer

This Technical Bulletin is published for general informational purposes only and is not intended to imply that these are the only materials, procedures, or methods, which are available or suitable. Materials, procedures, or methods may vary according to the particular circumstances, local building code requirements, design conditions, or statutory and regulatory requirements. While the information in this Technical Bulletin is believed to be accurate and reliable, it is presented without guarantee or responsibility on the part of Master Wall Inc. ®

masterwall.com

Technical Bulletin

Corporate: P.O. Box 397•Fortson•Georgia•31808•800-755-0825•FAX 706-569-6704

Technical: 800-760-2861

Adhesion Check

Cleaning and Preparation

A good cleaning is needed to ensure good adhesion. For the test area you will want to use the exact same preparation and cleaning intended for the rest of the building. Typically Trisodium Phosphate (TSP) or a TSP substitute is used over paint. Add some bleach if removing mildew. Follow the manufacturer's recommendations for heavy duty cleaning and allow to dry. Power Washing is recommended.

Bonding Agent/Rollershield/EP SB

In general we recommend some type of bonding agent to aid and bond and protect the existing surface from alkali degradation. Depending upon the application either Master Wall[®] BA57 bonding agent, Rollershield or EP SB could be used as the bonding agent. Rollershield is appropriate if you're applying the Rollershield Drainage EIFS, otherwise apply BA57 to the test area and allow to dry.

Architectural coatings (Roller-flex, Elasto-flex, ReCote™) do not require bonding agent.

Test Strips

Make test strips out of Master Wall[®] Standard Mesh measuring 2" wide by 24" long. Cut the mesh so that the wider strips of fiberglass are 2" wide and the weave is 24" long (see photo). Typically about one test strip per 1000 square feet is satisfactory.



Disclaimer

This Technical Bulletin is published for general informational purposes only and is not intended to imply that these are the only materials, procedures, or methods, which are available or suitable. Materials, procedures, or methods may vary according to the particular circumstances, local building code requirements, design conditions, or statutory and regulatory requirements. While the information in this Technical Bulletin is believed to be accurate and reliable, it is presented without guarantee or responsibility on the part of Master Wall Inc. ®

masterwall.com

Technical Bulletin

Corporate: P.O. Box 397•Fortson•Georgia•31808•800-755-0825•FAX 706-569-6704

Technical: 800-760-2861

Choose Materials

Select the appropriate Master Wall® material for the intended use. In general you want to test the first material making contact with the prepared surface.

Material	Master Wall® Systems	Notes
<u>Cement Base Coats & Barriers:</u> F&M, MBB, F&M Plus, MBB Plus, Quick Set MBB, Guardian, WeatherStop	Aggre-flex EIFS (adhered), Commercial Drainage EIFS, Uninsulated Finish	Cemplaster Fiberstucco is not allowed to be adhered to painted surfaces. Use metal lath.
<u>Finishes:</u> Superior or Superior Elastomeric Plus Finishes (direct to paint)	Superior Finishes over Stucco	BA57 not normally needed. Surface needs to be smooth for finish application, requiring EPSB
Rollershield	Rollershield Drainage EIFS	Apply Rollershield directly to the surface without using BA57
EPSB Base Coat	Uninsulated Finish	BA57 not normally needed
<u>Architectural Coatings:</u> Roller-flex, ReCote™, Elasto-flex	Coating over a previously painted surface	For these applications paint a test area, allow to dry, and then check adhesion by placing duct tape over the surface and removing.

Disclaimer

This Technical Bulletin is published for general informational purposes only and is not intended to imply that these are the only materials, procedures, or methods, which are available or suitable. Materials, procedures, or methods may vary according to the particular circumstances, local building code requirements, design conditions, or statutory and regulatory requirements. While the information in this Technical Bulletin is believed to be accurate and reliable, it is presented without guarantee or responsibility on the part of Master Wall Inc. ®

masterwall.com

Technical Bulletin

Corporate: P.O. Box 397•Fortson•Georgia•31808•800-755-0825•FAX 706-569-6704

Technical: 800-760-2861

Apply Materials

Mix or prepare the material according to data sheet instructions.

For Base Coats: Apply a layer measuring about 3" wide x 12" long. Immediately embed the Standard Mesh test strip into the surface and cover with additional material. Compared to regular applications the base material needs to be thin with pattern showing. Allow to dry for at least 3 days in good weather. About one foot of the mesh will remain exposed

For Architectural Coatings, Superior Finishes to painted stucco and Rollershield: Apply the coating to the surface measuring about 3" wide x 12" long. Allow to dry for at least 3 days in good weather.



Disclaimer

This Technical Bulletin is published for general informational purposes only and is not intended to imply that these are the only materials, procedures, or methods, which are available or suitable. Materials, procedures, or methods may vary according to the particular circumstances, local building code requirements, design conditions, or statutory and regulatory requirements. While the information in this Technical Bulletin is believed to be accurate and reliable, it is presented without guarantee or responsibility on the part of Master Wall Inc. ®

masterwall.com

Technical Bulletin

Corporate: P.O. Box 397•Fortson•Georgia•31808•800-755-0825•FAX 706-569-6704

Technical: 800-760-2861

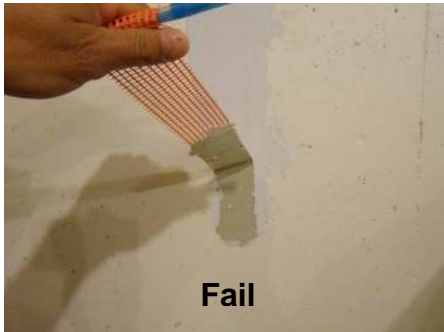
Bond Testing

After the test area has dried for at least three days check bond in the following manner:

For Base Coats and Finishes: Roll the loose test strip around the pencil or pen and pull off surface at a 90-degree angle and note findings. A successful pull test will leave material on both the wall and the mesh with no loss of bond to the coated surface.

For Superior Finishes over painted stucco: Take your margin trowel and check bond by trying to get under the aggregate and remove the finish. In a successful test the finish can't be removed.

For Coatings and Rollershield: Cut an "X" on the surface with a utility knife. Press some duct tape over the cut area and pull off at a 90-degree angle. If none to a small amount of paint is visible on the duct tape in the X location this indicates that the coating bond is good.



Disclaimer

This Technical Bulletin is published for general informational purposes only and is not intended to imply that these are the only materials, procedures, or methods, which are available or suitable. Materials, procedures, or methods may vary according to the particular circumstances, local building code requirements, design conditions, or statutory and regulatory requirements. While the information in this Technical Bulletin is believed to be accurate and reliable, it is presented without guarantee or responsibility on the part of Master Wall Inc. ®

masterwall.com

Technical Bulletin

Corporate: P.O. Box 397•Fortson•Georgia•31808•800-755-0825•FAX 706-569-6704

Technical: 800-760-2861

From Adhesion to Application

If the bond test proves successful, continue with the application following the cleaning/preparation process, BA57 bonding agent, and Master Wall[®] recommended application practices. While the testing conducted does verify that short-term bond is good it does not guarantee that the paint will remain bonded for the life of the building. We recommend considering the following strategies to ensure a longer-term application:

Coatings Direct to Paint (Roller-flex, ReCote, Elasto-flex): No further action required.

Rollershield Coating: No further action required.

Superior Finishes over painted stucco: No further action required.

Uninsulated Finish Application: Strongly consider the use of mesh over the painted surface. Should any spot de-bonding occur it will help to reinforce the area. Make sure flashings direct water away from the wall.

Master Wall EIFS Applications: Consider the addition of about four fasteners per sheet as additional support.

Alternate Methods

If the bond is poor then Master Wall products will not adhere to the surfaces. Alternative methods could include the following:

- ❑ Removal of the painted surface down to a clean, approved substrate by abrading, sandblasting or water blasting. Care would be needed to contain any lead paint for proper disposal.
- ❑ Applying a mechanically attached EIFS to the surface.
- ❑ Mechanically attaching metal lath to the surface, then adhering the EIFS to the metal lath.
 - Lath should be either 2.5#/sy or heavier
 - Mechanically attach with appropriate fastener every 6" vertically and 16" horizontally
 - Adhere with an approved Master Wall adhesive such as F&M or MBB.

Ultimately it's up to the owner as to whether or not this method will work for their project as the paint bond is not guaranteed and there is risk with this evaluation method. Please contact Master Wall[®] if you have any concerns about your specific application.

Disclaimer

This Technical Bulletin is published for general informational purposes only and is not intended to imply that these are the only materials, procedures, or methods, which are available or suitable. Materials, procedures, or methods may vary according to the particular circumstances, local building code requirements, design conditions, or statutory and regulatory requirements. While the information in this Technical Bulletin is believed to be accurate and reliable, it is presented without guarantee or responsibility on the part of Master Wall Inc. ®

masterwall.com

Technical Bulletin

Corporate: P.O. Box 397•Fortson•Georgia•31808•800-755-0825•FAX 706-569-6704

Technical: 800-760-2861

Field Adhesion Checklist

Project: _____

Address: _____

City/State: _____

Approximate square footage of application: _____

Paint Bond Check (X-Test)

of test areas: _____

Pass: _____

Fail: _____

Paint Type Check

Acrylic Latex

Oil Based

Other

Field Adhesion Test

Master Wall® Product Used: _____

of Test Areas: _____

Date/Time Applied: _____

Date/Time Tested: _____

Pass: _____

Fail: _____

Additional Comments: _____

Submitted by (name, email and phone): _____

Fax to 706-562-6704 or email to tech@masterwall.com

Disclaimer

This Technical Bulletin is published for general informational purposes only and is not intended to imply that these are the only materials, procedures, or methods, which are available or suitable. Materials, procedures, or methods may vary according to the particular circumstances, local building code requirements, design conditions, or statutory and regulatory requirements. While the information in this Technical Bulletin is believed to be accurate and reliable, it is presented without guarantee or responsibility on the part of Master Wall Inc. ®

masterwall.com