



Master Wall Inc.
Building a Culture of Excellence

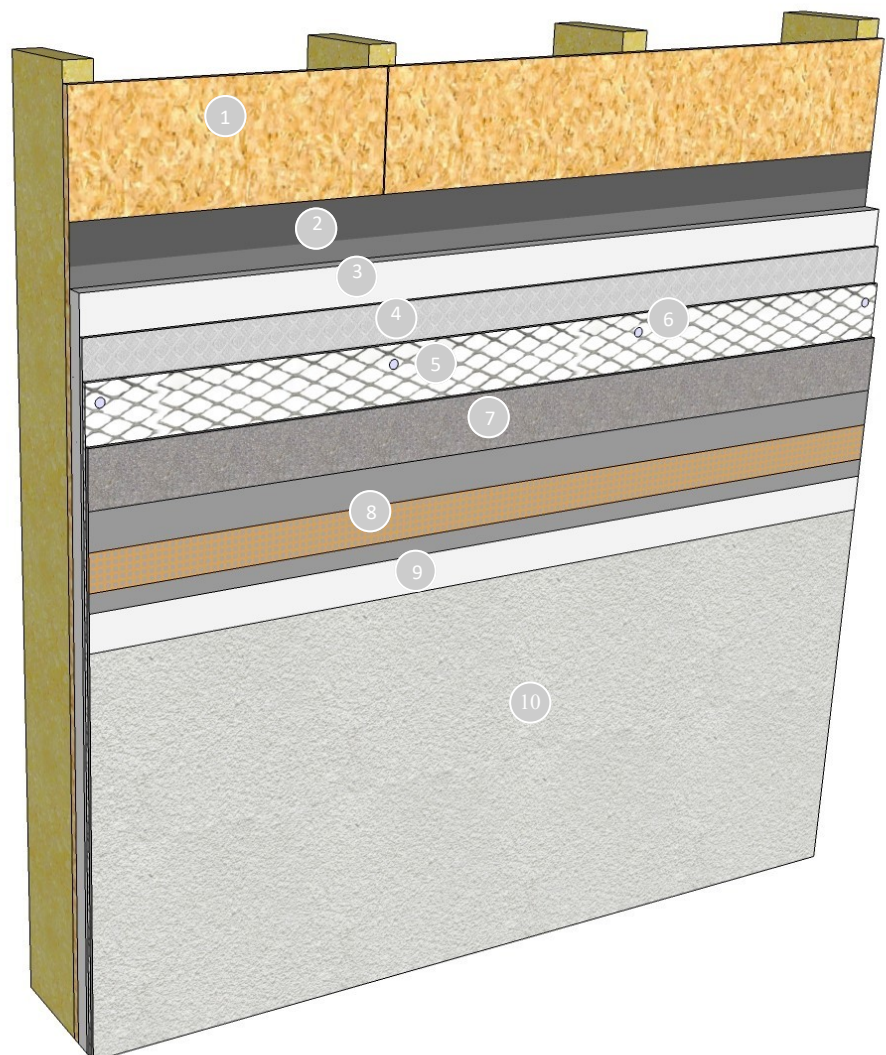
CEMPLASTER FIBERSTUCCO DELUXE 10

Cemplaster Fiberstucco Deluxe 10 is our premium stucco system designed for maximum performance and longevity. It features stucco additives for greater flexibility, a reinforced surface with WeatherSTOP base coat designed to keep the stucco dry and our Superior Elastomeric Plus finish to bridge any hairline cracking.

The system features an ease of specifying the components in a stucco system as part of a warranted application.

Features & Benefits

- Durable Cemplaster Fiberstucco with fibers for better crack resistance mixed with Stucco Ad-Liquid for improved tensile strength and flexibility
- WeatherSTOP waterproof base coat reinforced with standard mesh for a smooth finished surface with improved water resistance and exceptional crack resistance
- Primecoat Primer for improved adhesion and color retention
- Superior Elastomeric Plus Finish bridges minor hairline cracks common in stucco
- 10-year labor/material warranty



1. Framing & Approved Substrate (by others)
2. Water Barriers (by others)
3. CI Insulation up to 2" thick (optional, by others)
4. Drainage Mat (optional, as needed by local building code)
5. Stucco Reinforcement
6. Mechanical Attachment
7. Master Wall® Cemplaster Fiberstucco 1/2" (12.7 mm) thick with Stucco Ad-Liquid
8. Master Wall® WeatherSTOP Base coat with Standard Mesh
9. Master Wall® Primecoat Primer
10. Master Wall® Superior Elastomeric Plus Finish

Short Form Specification**PART 1 GENERAL**

Materials and installation of a Master Wall® Cemplaster Fiberstucco system. Products and assembly from select master specification components.

PART 2 PRODUCTS**2.01 MANUFACTURERS**

A. Master Wall Inc.®, Cemplaster Fiberstucco Deluxe 10 System.

2.02 MOISTURE BARRIER (WRB) (supplied by various manufacturers): WRB01 Minimum 2-layers of 15-lb/100 ft² (0.683 kg/m²) vapor permeable asphalt saturated felt in compliance with ASTM D 226, Type I or similar in accordance with building code.

2.03 CONTINUOUS INSULATION (CI): Continuous insulation as specified by others, up to 2" thickness. Follow recommended fastening procedures and plates for thicker insulation board. Reference Master Wall Stucco Insulation Board Data Sheet for typical options,

2.04 DRAINAGE SPACER (DRS): As specified or required by local building code in specific regions. Reference Master Wall Drainage Mat Data Sheet for options.

2.05 CEMPLASTER FIBERSTUCCO (CFS): Master Wall® Cemplaster Fiberstucco, Ready Cemplaster Fiberstucco or approved Cobrand Stucco. Applied thickness shall be: 1/2" (12.7 mm) CFS02, CFS03.

2.06 STUCCO BONDING AGENTS AND ADDITIVES (SA): SA01 Master Wall® Stucco Ad Liquid, mixed 3 quarts (2.8 liters) per mix of Cemplaster Fiberstucco, 1 quart (0.95 liters) of Ready Cemplaster Fiberstucco.

2.07 LEVELING BASE COATS (LBC): LBC02 Reinforced leveling base coat of Master Wall® WeatherSTOP embedded in Master Wall® Standard Mesh.

2.08 PRIMER (PRIME): PRIME01 Master Wall® Primecoat or Sanded Primecoat: acrylic-based tinted primer.

2.09 FINISH COAT (FIN): FIN02 Superior Finish: Master Wall Inc.® Superior Elastomeric Plus Finishes using Dirt Pickup Resistant (DPR) polymers. The following textures are available: Perfect 2.0, Fine Sand 1.0, Medium Sand 1.5, Versatex 0.5.

2.10 PLASTER BASES (supplied by others; select one depending on type construction): 1. Expanded metal lath meeting ASTM C847 Standard Specification for Metal Lath, Welded wire lath meeting ASTM C933 Standard Specification for Welded Wire Lath, Woven wire lath meeting ASTM C1032 Standard Specification for Woven Wire Plaster Base. 20 gage woven wire may only be used when the base coat thickness is 1/2-inches (12.7 mm) thick or less, Nonmetallic plaster bases meeting ASTM C1788; St. Gobain Fibalath™ Glass Fiber Lath, Plastic Components Ultra Lath Plus, Striplath Minimum 4" x 12" (102 mm x 305 mm), in types and weights noted above.

2.11 MECHANICAL FASTENING & ATTACHMENT (by others)

Appropriate non-corroding fasteners, depending on the type framing or substrate. Reference master specification for recommended attachment

2.12 ACCESSORIES (by others)

Weep screed, casing bead, corner bead, cornerite, corner lath, expansion and control joint accessories. All accessories shall meet the requirements of ASTM C 1063 and its referenced documents: PVC plastic in compliance with ASTM D 1784, cell classification 13244C, Zinc in compliance with ASTM B 69, Galvanized metal in compliance with ASTM A 653 with G60 coating, 304 stainless steel trim manufactured in accordance with ASTM C841. All accessories shall have perforated or expanded flanges and shall be designed with grounds for the specified thickness of the Cemplaster Fiberstucco.

2.13 JOB MIXED INGREDIENTS

Water: Clear, clean and potable without any foreign matter in the solution that may affect the color and setting qualities of the cement, adhesive, base or finish coat. Sand: Clean, well graded sand free of deleterious materials in compliance with ASTM C 897. Cement: Type I or I-II Portland cement meeting ASTM C-150.

2.14 MIXING

Mix products in accordance with manufacturer's recommendations.

PART 3 EXECUTION**3.01 INSTALLATION**

Install products in strict accordance with manufacturer's written installation instructions.

Information contained in this product data sheet conforms to the standard detail recommendations and specifications for the installation of Master Wall Inc.® products and is presented in good faith. Master Wall Inc.® assumes no liability, expressed or implied as to the architecture, engineering, or workmanship of any project. This information may be concurrent with, or superseded by other applicable documents, such as specifications and details. Contact Master Wall Inc.® for the most current product information. ©2025 Master Wall Inc.®

