



**Master Wall Inc.®**  
Building a Culture of Excellence

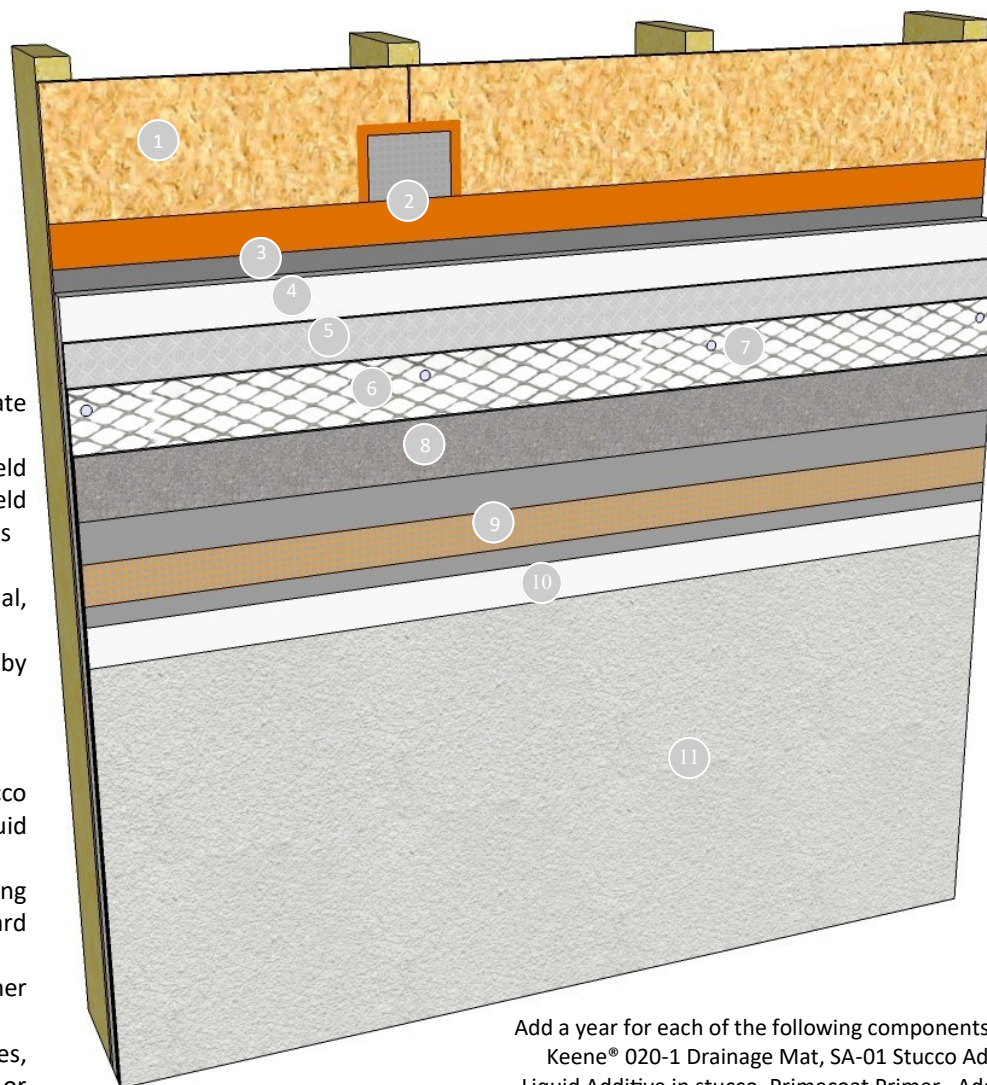
**CEMPLASTER FIBERSTUCCO  
SUPERIORSHIELD  
SUPERIORSHIELD CR**

Cemplaster Fiberstucco SuperiorShield is a durable three-coat stucco system meeting ASTM C926 requirements for a full-thickness stucco system. Designed for demanding conditions, it can incorporate our CR—Crack Reducing lamina that provides additional reinforcement as well as leveling.

SuperiorShield Rollershield adds full water and air protection over the substrate to reduce air leakage and maximize energy efficiency.

### Features & Benefits

- Durable Cemplaster Fiberstucco with fibers for better crack resistance
- Traditional stucco thickness improved with engineered materials for batch-to-batch consistency
- Noncombustible
- IBC (2512) and IRC (R703.6.2) compliant
- Crack Reducing (CR) option to reduce shrinkage cracking
- SuperiorShield Rollershield offers leading edge air and water building protection.
- Minimum 10-year labor/material warranty, 12-year for CR



1. Framing & Approved Substrate (by others)
2. Master Wall® SuperiorShield Rollershield-RS with SuperiorShield Flashing Tape at seams and openings
3. Water Barrier/slip sheet (by others)
4. CI Insulation up to 2" thick (optional, by others)
5. Drainage Mat (optional, as needed by local building code)
6. Stucco Reinforcement
7. Mechanical Attachment
8. Master Wall® Cemplaster Fiberstucco 3/4" (19 mm) thick, Stucco Ad-Liquid additive optional
9. Master Wall® CR Crack Reducing leveling Base coat with Standard Mesh (optional)
10. Master Wall® Primecoat Primer (optional)
11. Master Wall® Superior Finishes, Superior Elastomeric Plus Finish or Specialty Finish

Add a year for each of the following components:  
Keene® 020-1 Drainage Mat, SA-01 Stucco Ad-Liquid Additive in stucco, Primecoat Primer. Add 3 years for Superior Elastomeric Plus Finish

**Short Form Specification****PART 1 GENERAL**

Materials and installation of a Master Wall® Cemplaster Fiberstucco system. Products and assembly from select master specification components.

**PART 2 PRODUCTS****2.01 MANUFACTURERS**

A. Master Wall Inc.®, Cemplaster Fiberstucco SuperiorShield and SuperiorShield CR System.

2.02 Master Wall® Rollershield LAB, Liquid Applied Air and Water Barrier (WRB03) over an approved sheathing substrate with a minimum 15-lb/100 ft<sup>2</sup> (0.683 kg/m<sup>2</sup>) vapor permeable asphalt saturated felt in compliance with ASTM D 226, Type I or similar in accordance with building code if insulation or drainage mat is not used.

2.03 CONTINUOUS INSULATION (CI): Continuous insulation as specified by others, up to 2" thickness. Follow recommended fastening procedures and plates for thicker insulation board. Reference Master Wall Stucco Insulation Board Data Sheet for typical options,

2.04 DRAINAGE SPACER (DRS): As specified or required by local building code in specific regions. Reference Master Wall Drainage Mat Data Sheet for options.

2.05 CEMPLASTER FIBERSTUCCO (CFS): Master Wall® Cemplaster Fiberstucco, Ready Cemplaster Fiberstucco or approved Cobrand Stucco. Applied thickness shall be: 3/4" (19 mm) CFS04.

2.06 STUCCO BONDING AGENTS AND ADDITIVES (SA): Optional SA01 Master Wall® Stucco Ad Liquid, mixed 3 quarts (2.8 liters) per mix of Cemplaster Fiberstucco, 1 quart (0.95 liters) of Ready Cemplaster Fiberstucco.

2.07 LEVELING BASE COATS (LBC): LBC02 Optional reinforced leveling base coat of Master Wall® base coat embedded in Master Wall® Standard Mesh (required for CR applications).

2.08 PRIMER (PRIME): PRIME01 Optional Master Wall® Primecoat or Sanded Primecoat: acrylic-based tinted primer.

2.09 FINISH COAT (FIN): FIN02 Superior Finish: Master Wall Inc.® Superior Finishes, Superior Elastomeric Plus Finishes using Dirt Pickup Resistant (DPR) polymers. The following textures are available: Perfect 2.0, Fine Sand 1.0, Medium Sand 1.5, Versatex 0.5. Optional Specialty Finishes

2.10 PLASTER BASES (supplied by others; select one depending on type construction): 1. Expanded metal lath meeting ASTM C847 Standard Specification for Metal Lath, Welded wire lath meeting ASTM C933 Standard Specification for Welded Wire Lath, Nonmetallic plaster bases meeting ASTM C1788; St. Gobain Fibalath™ Glass Fiber Lath, Plastic Components Ultra Lath Plus, Striplath Minimum 4" x 12" (102 mm x 305 mm), in types and weights noted above.

**2.11 MECHANICAL FASTENING & ATTACHMENT (by others)**

Appropriate non-corroding fasteners, depending on the type framing or substrate. Reference master specification for recommended attachment

**2.12 ACCESSORIES (by others)**

Weep screed, casing bead, corner bead, cornerite, corner lath, expansion and control joint accessories. All accessories shall meet the requirements of ASTM C 1063 and its referenced documents: PVC plastic in compliance with ASTM D 1784, cell classification 13244C, Zinc in compliance with ASTM B 69, Galvanized metal in compliance with ASTM A 653 with G60 coating, 304 stainless steel trim manufactured in accordance with ASTM C841. All accessories shall have perforated or expanded flanges and shall be designed with grounds for the specified thickness of the Cemplaster Fiberstucco.

**2.13 JOB MIXED INGREDIENTS**

Water: Clear, clean and potable without any foreign matter in the solution that may affect the color and setting qualities of the cement, adhesive, base or finish coat. Sand: Clean, well graded sand free of deleterious materials in compliance with ASTM C 897. Cement: Type I or I-II Portland cement meeting ASTM C-150.

**2.14 MIXING**

Mix products in accordance with manufacturer's recommendations.

**PART 3 EXECUTION****3.01 INSTALLATION**

Install products in strict accordance with manufacturer's written installation instructions.

Information contained in this product data sheet conforms to the standard detail recommendations and specifications for the installation of Master Wall Inc.® products and is presented in good faith. Master Wall Inc.® assumes no liability, expressed or implied as to the architecture, engineering, or workmanship of any project. This information may be concurrent with, or superseded by other applicable documents, such as specifications and details. Contact Master Wall Inc.® for the most current product information. ©2025 Master Wall Inc.®

