

**SUPERIORSHIELD ROLLERSHIELD
LAB SYSTEM**
Liquid-applied Air/Water Barrier

SuperiorShield Rollershield LAB Liquid-applied Air/Water Barrier system is a series of products for use with claddings other than EIFS that delivers a durable, robust high-performance air and water barrier that is easily applied yet comparatively less expensive than other fluid or peel and stick barriers.

The system offers 100% protection for building walls over all common substrates (Glass Fiber Sheathing, concrete, masonry, plywood, OSB) with no laps, breaks or holes. Window and door openings are flashed as are penetrations

Primary LAB Wall Components

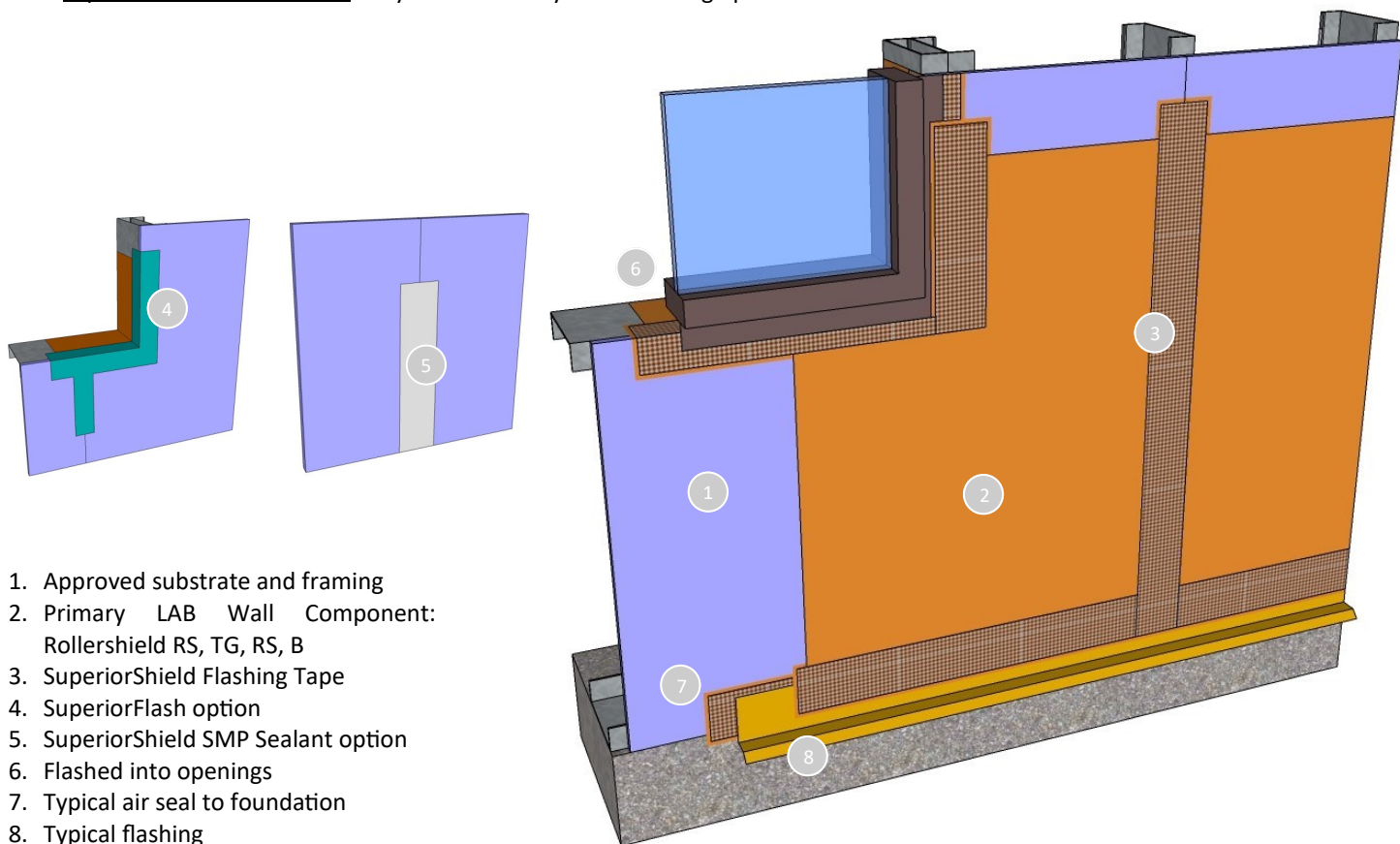
- Rollershield RS (Roll/Spray) – Vapor open with thin to thick application methods to suit project needs
- Rollershield TG (Trowel Grade) – Vapor open trowel grade version of RS
- Rollershield VB (Vapor Barrier) – Vapor closed; roll/spray applied
- Rollershield B (Black) – Darker version of Rollershield RS for use with screen wall applications where it may be visible.

Seaming & Secondary Flashing Options

- SuperiorShield Flashing Tape – Seaming and transition tape embedded in Rollershield products
- SuperiorFlash – STPE seaming and flashing product option that speeds the application process
- SuperiorShield SMP Sealant - Silyl Modified Polyether seaming option

Features & Benefits

- Weather protection as thin as 10 mils
- Seamless with no laps
- Medium to high build options
- Vapor open or closed options
- Screen wall options
- Seaming and flashing options
- Single source warranty options with Master Wall® CIFS® and other systems



1. Approved substrate and framing
2. Primary LAB Wall Component: Rollershield RS, TG, RS, B
3. SuperiorShield Flashing Tape
4. SuperiorFlash option
5. SuperiorShield SMP Sealant option
6. Flashed into openings
7. Typical air seal to foundation
8. Typical flashing

Short Form Specification

1.0 General

This is a short form specification. Refer to Rollershield LAB specifications and details for additional information.

1.1 System Description

The Master Wall Inc.® SuperiorShield Rollershield LAB System is a liquid applied air and water barrier.

1.2 Design Requirements:

- A. Reference Master Wall® suggested details and architectural drawings for specific detail requirements.
- B. Maximum deflection of substrates shall not exceed L/240.
- C. Typical acceptable substrates include unpainted brick, masonry, concrete, plywood, Oriented Strand Board (OSB) or gypsum sheathings (ASTM C1396 or C1177). Contact Master Wall® for other approved substrates.

1.3 Job Conditions

- A. Store all materials protected from weather and direct sunlight at temperatures above 40°F (5°C).
- B. The ambient and wall temperature shall be a minimum of 40°F (5°C) and shall remain so for at least 24 hours after installation, except for specific products.

2.0 Products

All components of the Rollershield System shall be manufactured by Master Wall Inc.® and supplied by an authorized distributor.

A. Water Barrier:

1. Rollershield RS (Roll/Spray) – Vapor open air/water barrier
2. Rollershield TG (Trowel Grade) – Vapor open trowel grade version
3. Rollershield VB (Vapor Barrier) – Vapor closed air/water barrier
4. Rollershield B (Black) – Darker version of Rollershield RS

B. Seaming and Flashing

1. SuperiorShield Flashing Tape: A lightweight nonwoven joint treatment material.
2. SuperiorFlash – STPE seaming and flashing product
3. SuperiorShield SMP Sealant - Silyl Modified Polyether seaming product

3.0 Installation

- A. Inspect the substrate to ensure that it is free of all foreign materials that would affect the adhesion of the Rollershield LAB.
- B. Apply the coatings in strict accordance with Master Wall® specifications, product data sheets, architectural drawings and architectural specifications.

Compliance Standards

System complies with 2012-2011 IBC and IRC per IAPMO ER-0384, Tensile Bond ASTM C297/E2134 – min. 28 psi, Freeze-thaw ASTM E2485 – pass, Water Resistance ASTM D2247 – pass, Water Vapor Transmission ASTM E96 Proc. B - Rollershield RS/B (30 perms) Rollershield TG (12 perms) Rollershield VB (0.07/1.35 perms), Air Permeance ASTM E2178 - 0.001 cfm/ft² @ 1.57 psf (0.001 L/s/m² @ 75 Pa), Air Leakage ASTM E2357 - 0.0006 cfm/ft² @ 1.57 psf (0.003 L/s/m² @ 75 Pa) & 0.04 cfm/ft² @ 6.24 psf (0.02 L/s/m² @ 300 Pa), Structural Performance ASTM E1233 – pass, ASTM E72 – pass, Restrained Environmental ICC-ES Procedure – pass, Water Penetration ASTM E331 – pass, UV Exposure – pass, Accelerated Aging – pass, Hydrostatic Pressure Test AATCC 127 – pass, Surface Burning Characteristics ASTM E84 – pass, Intermediate Multi-Story Fire Test NFPA 285 – pass, Nail Sealability ASTM D1970 – pass, Heat and Smoke Release Rates ASTM E1354 – pass, ICC-ES AC212 - pass

Information contained in this product data sheet conforms to the standard detail recommendations and specifications for the installation of Master Wall Inc.® products and is presented in good faith. Master Wall Inc.® assumes no liability, expressed or implied as to the architecture, engineering, or workmanship of any project. This information may be concurrent with, or superseded by other applicable documents, such as specifications and details. Contact Master Wall Inc.® for the most current product information. ©2024 Master Wall Inc.®

