



# ReCote™

Lightly Textured Acrylic Wall Coating

### Use Over

Brick  
Concrete  
Tilt-up Concrete  
CMU  
Stucco  
Others approved in writing

**VOC: <1% by Weight**

**VOC: 3 g/l**

**Manufacture Locations:  
30058 • 77474 • 84651**

**Packaging: 5 gallon (19L)  
pail**

**Pail Weight: 60 lbs (27 kg)**

**Shelf Life: 2 years**

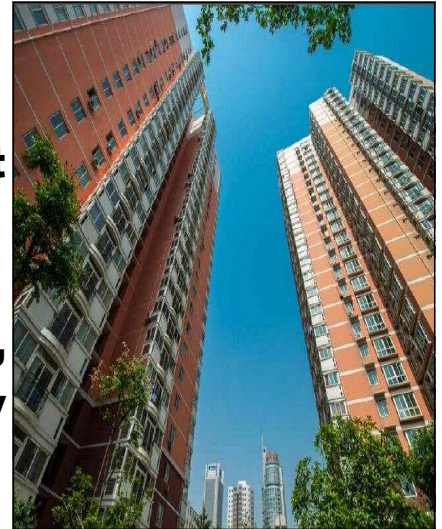
**Coverage (estimated)  
250-300 sf (23-28 sm)**

### Technical Data

Accelerated Weathering: Pass,  
2000 hours  
Specific Gravity g/cc: 1.70  
Weight per Gallon, lbs: 13.0  
Solids % by weight: 78.0  
Solids % by Volume: 70.0  
Wet Coating Thickness, mils:  
25-30  
Dry Coating Thickness, mils:  
20-22  
Solvent: Water

**Master Wall® ReCote™**  
is an acrylic textured  
wall coating formulated  
for direct application to  
masonry, concrete and  
tilt-up concrete panels.

- **Beautifully light textured surface**
- **Apply with brush, roller or spray equipment**
- **64 Master Wall® Colors plus popular Boral® Colors**
- **Water-based for easy cleanup**



**M Master Wall Inc.®**  
*Building a Culture of Excellence*

[masterwall.com](http://masterwall.com)

PO Box 397 • Fortson • GA • 31808 • 800-755-0825 • Tech: 800-760-2861



# ReCote™

Lightly Textured Acrylic Wall Coating

**Temp: 50°-110°F (10°-43°C) • Working Time: 1/2 hr • Dry Time: 1-3 hrs (set) 24-48 (fully dry)**  
**at room temperature, working and drying time will vary with temperature and humidity**

## Application Procedure

**General** - Air and substrate temperature for application of ReCote™ must be 50°F (10°C) or higher and must remain 50°F (10°C) or higher for a minimum of 24 hours. Working and drying times are based upon normal room temperature conditions and will vary with temperature and humidity. ReCote™ is not intended for horizontal applications such as floors, steps or other high traffic areas, or for below grade applications.

**Preparation** - Most existing surfaces will only need cleaning with an appropriate cleaner prior to the ReCote™ application. Avoid strong acid-based cleaners and allow all surfaces to fully dry prior to application. In situations where there is a drastic color change, walls are deteriorated, very porous, previously painted, or present other integrity issues use Master Wall Inc.® Primecoat Primer. The substrate must be approved by Master Wall Inc.®, clean, dry, structurally sound and free of efflorescence, oil, grease, form release agents and curing compounds or anything that would affect bond. Test painted surfaces prior to application. Concrete should cure for a minimum of 28 days.

**Mixing** - ReCote™ is pre-mixed in the pail, but minor separation may occur during shipping and storage. Prior to application, mix the material thoroughly with a drill and paddle mixer for several minutes to ensure proper blending. If a texture sprayer will be used for the application add 1 pint of water (16 oz, 0.47L) to the full pail prior to mixing. If the material is to be applied by brush, no additional water is needed. No boxing of materials is necessary, but when adding water make sure to add the same amount of water to each pail. Keep unused pails tightly sealed and protected from adverse conditions.

**Brush or Roller Application** - Applying ReCote™ with a brush or rollers should produce a durable, uniform finish under most situations. However, special attention should be given to how much material is loaded on the wall initially, how much excess material is left to pool in the mortar joints and how the brush marks or roller lines are minimized. Brushing or rolling the coating material on the wall, as opposed to spraying, will result in a slightly different finish and may reduce coverage. Heavy brush or roller marks can be minimized by re-brushing with a soft bristle brush using light pressure.

**Spray Application** - Using a hopper gun and air compressor or combined texture pump and air compressor unit, apply ReCote™ to the wall at a distance of 12-18 inches (0.3-0.5 m) from the surface. Use continuous regulated pressure to produce a consistent, fine spray. Always keep the spray gun pointed perpendicular to the wall and move at a pace sufficient to cover the masonry without flooding, built-up patches or runs. Work section by section in a circular pattern, overlapping each pass several inches so that a uniform thickness and texture is created. If the wall has recessed mortar joints or deep indentations in the surface, angle the spray equipment for complete coverage. For best results, a lighter second pass should be applied to even out color and texture variation before moving on to the next section.

**Application Precautions** - ReCote™ should not be applied when the substrate has a high moisture content as a result of heavy rain, recent cleaning, or a rising damp situation. High moisture levels can lead to coating damage and poor bond. To minimize the potential for streaking, splotchy areas and cold joints, fully complete sections and schedule stops at naturally occurring breaks in the wall such as an internal or external corner.

For spraying ReCote™, texture spray equipment must be used. Conventional airless or air assisted paint sprayers will clog and suffer damage from the sand content in ReCote™.

**Clean-Up** - ReCote™ may be cleaned with soap and water prior to drying. After the material has dried and cured, it can be removed with a wire brush or scraper, pressure washer using high pressure and a narrow angle spray tip or commercial strippers. Follow manufacturers instructions for spray equipment clean up.

**Maintenance** - Periodic maintenance cleaning to remove dirt, grime and other stains can be handled using a mild detergent cleaner or trisodium phosphate (TSP) with a soft bristle brush. If a pressure washer must be used make sure there is a combination of 1) sufficient but low pressure, 2) a wide angle spray tip, and 3) adequate distance from the wall to prevent any damage to the coating.

**Caution**-Ingestion hazard, keep out of the reach of children. If swallowed give 1-2 glasses of water. Do not induce vomiting. Based on the volume ingested, seek medical advice or immediate medical attention. In case of contact with eyes, flush thoroughly with warm water for 15 minutes. Obtain the MSDS for more detailed information at our website.



Equipment	Recommended Settings
Roller	Latex compatible, 3/4"-1" nap
Hopper Gun	Orifice Size 3/16" (4-5 mm)
Air Compressor	Rated 6.5 or greater CFM @90-100 PSI. Must deliver continuous regulated pressure of at least 60 PSI through a 3/8" hose. Consistency of pressure and volume to the gun is critical so make sure the compressor is sized to handle longer hose runs, fewer starts/stops and multiple spray guns.
Commercial Texture Sprayer	Graco® RTX 1500, Graco® GTX 2000, Graco® 1030 FC or similar equipment using a 3/16" spray tip orifice.

Information contained in this product data sheet conforms to the standard detail recommendations and specifications for the installation of Master Wall Inc.® products and is presented in good faith. Master Wall Inc.® assumes no liability, expressed or implied as to the architecture, engineering, or workmanship of any project. This information may be concurrent with, or superseded by other applicable documents, such as specifications and details. Contact Master Wall Inc.® for the most current product information. ©2016 Master Wall Inc.®



**PO Box 397 • Fortson • GA • 31808 • 800-755-0825 • Tech: 800-760-2861**