



Soffit System

09 25 13

Direct Applied Exterior Finish System

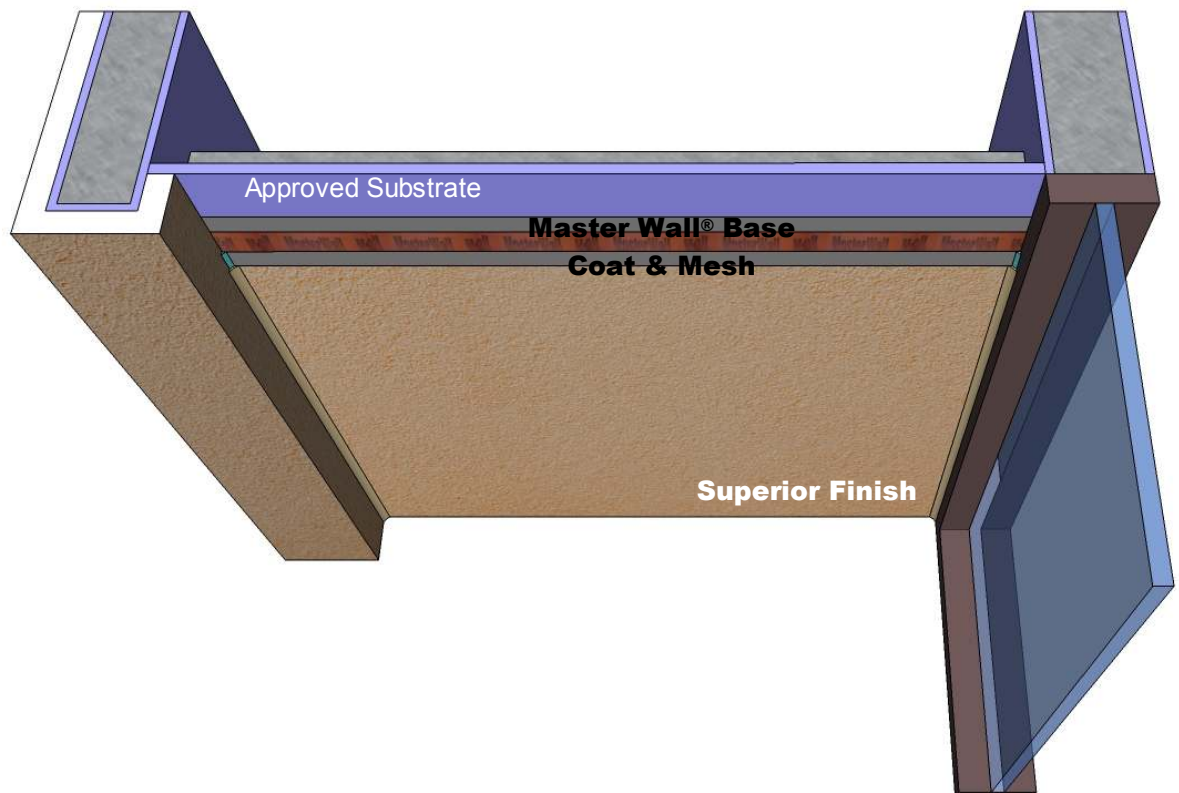
Features & Benefits

- Easy Installation
- Great Aesthetics
- Economical
- Fire Resistant

System Use

- Commercial
- Residential

The Master Wall Inc.® Soffit System application greatly improves the looks of any eave, overhang, canopy or large soffit. The textured surface and installed system is impact resistant and durable, yet with an economical cost compared to other soffit alternatives.



 **Master Wall Inc.®**
Building a Culture of Excellence

masterwall.com

PO Box 397 • Fortson • GA • 31808 • 800-755-0825 • Tech: 800-760-2861



Soffit System

Short Form Specification

1.0 General

This is a short form specification. Refer to Soffit System specifications and details for additional information.

1.1 System Description

The Master Wall Inc.® Soffit System is a Direct-applied Exterior Finish System consisting of a reinforced base coat and a textured finish.

1.2 Design Requirements:

- A. Reference Master Wall Inc.® suggested details and architectural drawings for specific detail requirements.
- B. Maximum deflection of substrates shall not exceed L/360.
- C. Typical acceptable substrates include Exterior Gypsum Soffit Board, Dens Glass Gold® (ASTM C1177), Util-A-Crete®, FiberRock®, Durock®, PermaBase®, Hardie Tex® or Eterspan®. Contact Master Wall for other approved substrates.
- D. Expansion joints are required at building expansion joints, panel joints and other areas where significant movement occurs.
- E. Control joints are required to be located by the designer. Reference Master Wall® specifications for specific recommendations.
- F. Detail and install trim accessories according to the approved trim manufacturer's requirements (Plastic Components, Vinyl Corp. or approved equal).

1.3 Quality Assurance

- A. The system shall be tested for: Accelerated weathering, mildew resistance, salt spray resistance and structural performance.
- B. The system shall have been tested for fire performance in accordance with ASTM E84.

1.4 Job Conditions

- A. Store all materials protected from weather and direct sunlight at temperatures above 40°F (5°C).
- B. The ambient and wall temperature shall be a minimum of 40°F (5°C) and shall remain so for at least 24 hours after installation.

2.0 Products

All components of the Soffit System shall be manufactured by Master Wall Inc.® and supplied by an authorized distributor.

- A. Aggre-flex Mesh: Standard Mesh.
- B. Master Wall® Base Coats:
 1. Foam & Mesh Adhesive (F&M), F&M Plus: A 100% pure acrylic-based adhesive that is field mixed with Portland cement.
 2. Master Wall® Bagged Base (MBB), MBB Plus: A ready to use dry base that is field mixed with water.
 3. Guardian: A waterproof 100% pure acrylic-based fiber reinforced adhesive that is field mixed with Portland cement.
- C. Superior Finish: 100% pure acrylic formulation with integral color and texture. Perfect Swirl 2.0 (Perfect), Fine Sand 1.0 (Spray), Medium Sand 1.5 (Desert Sand), Versatex 0.5 (Refinish) textures.
- D. Specialty Finishes: Specialty finish blends of natural and man-made decorative specialty finishes and accents.
- E. Master Wall® Coatings:
 1. Primecoat/Sanded Primecoat: A water-based primer.
 2. Roller-flex: A water-based architectural finish coating.

3.0 Installation

- A. Inspect the substrate to ensure that it is free of all foreign materials that would affect the adhesion of the Master Wall® System.
- B. Apply the system in strict accordance with Master Wall® specifications, product data sheets, architectural drawings and architectural specifications.

We finish strong.

Information contained in this product data sheet conforms to the standard detail recommendations and specifications for the installation of Master Wall Inc.® products and is presented in good faith. Master Wall Inc.® assumes no liability, expressed or implied as to the architecture, engineering, or workmanship of any project. This information may be concurrent with, or superseded by other applicable documents, such as specifications and details. Contact Master Wall Inc.® for the most current product information. ©2016 Master Wall Inc.®

 **Master Wall Inc.®**
Building a Culture of Excellence
masterwall.com

PO Box 397 • Fortson • GA • 31808 • 800-755-0825 • Tech: 800-760-2861