



Stucco Accessories

Systems

Cemplaster Fiberstucco

Manufacture Locations:

Verify with manufacturer

Recycled Content:

Varies with manufacturer

Packaging (trims): Typically 10' lengths

Weight: Varies

Typical Grounds

(thickness): 3/8" (9.5mm),
1/2" (13mm), 5/8" (16mm),
3/4" (19mm), 7/8" (22mm)

Materials:

1. PVC, ASTM D 1784.
2. Galvanized Metal, ASTM A 653 with G60 or G90 coating.
3. Zinc, ASTM B 69.
4. Stainless Steel, ASTM C841 Type 304.

Lath Reinforcement:

CFS01, 3/8" thick No. 17 gauge galvanized steel woven wire fabric, ASTM C1032.

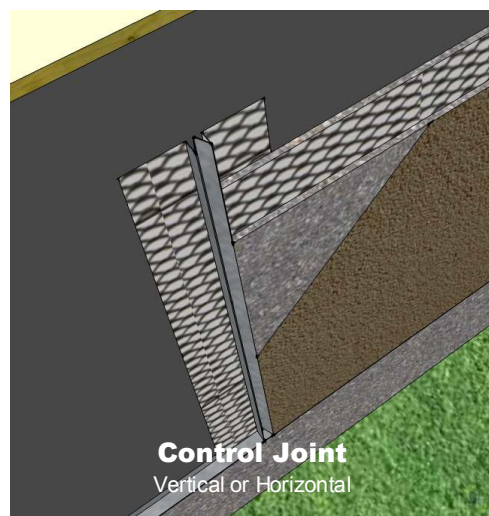
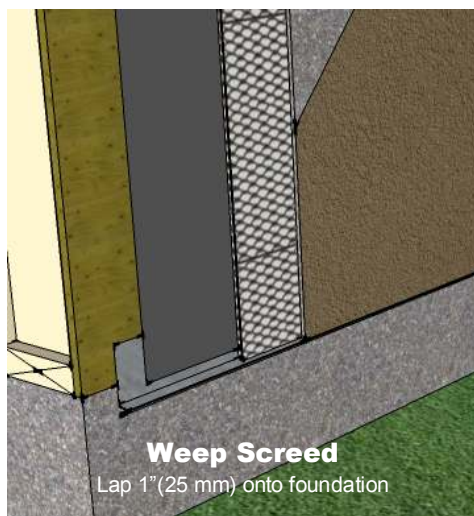
CFS03, 1/2" thick 2.5 lb./yd² (1.4 kg/m²) self-furred galvanized steel diamond mesh metal lath, ASTM C 847.

CFS03-SS, 1/2" thick 2.5 lb./yd² (1.4 kg/m²) self-furred stainless steel diamond mesh metal lath, ASTM C 847.

CFS04 & 05, 3/4 - 7/8" thick 3.4 lb./yd² (1.8 kg/m²) self-furred galvanized steel diamond mesh metal lath, ASTM C 847.

CFS04 & 05-SS, 3/4 - 7/8" thick 3.4 lb./yd² (1.8 kg/m²) self-furred stainless steel diamond mesh metal lath, ASTM C 847, 304 or 316 stainless steel.

Stucco accessories are used to help gauge the thickness of stucco systems, help control stucco movement and form corners. Lath reinforcement is used to reinforce the stucco.



Manufacturers

Amico Building Products^{1,2,3,4} 800-366-2642, www.amico-lath.com

CEMCO² 800-775-2362, www.cemcosteel.com

ClarkDietrich Building Systems^{1,2,3} 513-870-1100,
www.clarkdietrich.com

Plastic Components¹ 800-327-7077, www.plasticcomponents.com

Vinyl Corp.¹ 800-648-4695, www.vinylcorp.com

Wind-Lock¹ 800-872-5625, www.wind-lock.com

Product Test Standards

ASTM A653, ASTM B69, ASTM C841, ASTM C847, ASTM C926, ASTM C1063, ASTM D1784, Plastic may not be suitable for non-combustible construction assemblies.

 **Master Wall Inc.**[®]
Building a Culture of Excellence
masterwall.com

PO Box 397 • Fortson • GA • 31808 • 800-755-0825 • Tech: 800-760-2861



Stucco Accessories

Application Procedure

After satisfactory inspection of surfaces and correction of any deviations from specification requirements commence the Cemplaster Fiberstucco installation in accordance with Master Wall Specifications.

Weep Screenshot Installation

Install foundation weep screed at the base of the wall securely to framing with the appropriate fastener. Locate foundation weep screed so that it overlaps the joint between the foundation and framing by a minimum of 1 inch (25 mm). Locate the foundation weep screed minimum 4 inches (101 mm) above earth grade, 2 inches (51 mm) above finished grade (paved surfaces, for example).

Weather Protection

Weather barrier will lap onto foundation weep screed as noted in Master Wall® details. Verify that WRB installation is complete.

Casing Bead and Expansion Joint Installation

Install casing beads at Cemplaster Fiberstucco terminations—doors, windows and other through wall penetrations. Install expansion joints (or back-to-back casing beads) at building expansion joints, where the Cemplaster Fiberstucco is to be installed over dissimilar construction or substrates, at changes in building height, at floor lines, columns, and cantilevered areas. Install full accessory pieces where possible and avoid small pieces. Seal adjoining pieces by embedding ends in sealant. Abut horizontal into vertical joint accessories. Attach at 6-inch (152 mm) centers into framing with appropriate fasteners.

(Note: refer to architectural drawings for joint locations and accessory type. Moisture protection must be continuous behind joints and accessories.)

Control Joint Installation

Install control joints every 144 ft² (13.4 m²) for walls and 100 ft² (9.3 m²) maximum (as indicated on the construction documents). Tack in place as insure proper alignment during the application of the lath. Wire tie control joints to lath at 6 inches (152 mm) on center if framing members aren't present under the accessory. Seal any exposed ends and edges preferably by setting them in sealant during installation to prevent water entry.

Lath Installation

Diamond Mesh Metal Lath: General—install metal lath with the long dimension at right angles to structural framing. Terminate lath at expansion joints. Do not install continuously beneath joints. Seams/overlaps – overlap side seams a minimum of ½ inch (13 mm) and end seams a minimum 1-inch (25 mm). Stagger end seams. Overlap casing beads and expansion joints minimum 1 inch (25 mm) over the narrow wing accessories and 2 inches over expanded flange accessories. Attachment—fasten securely through sheathing into structural framing at 6 inches (152 mm) on center maximum vertically and 16-24 inches (41-61 cm) on center horizontally*. Wire tie horizontal laps at 8 inches (204 mm) on center at: side laps, accessory overlaps, and where end laps occur between supports.

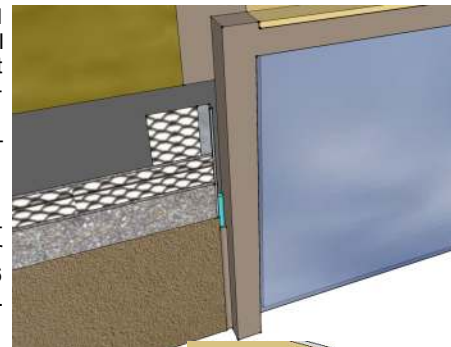
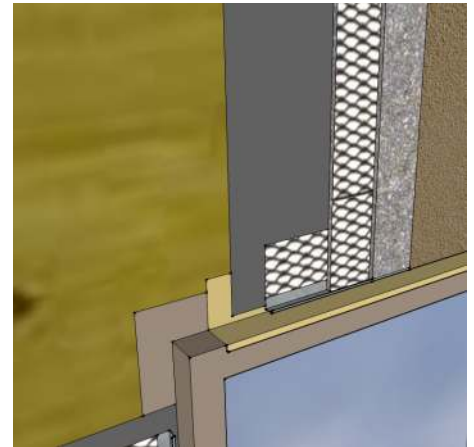
Florida HVHZ: 7/8" minimum thickness of Cemplaster Fiberstucco, 3.4#/sy metal lath fastened 4" (102 mm) on center vertically and 16" (41 cm) on center horizontally.

Welded wire fabric lath—follow installation as for metal lath except overlap all seams by one mesh minimum. **Paper-backed lath**—follow installation as for metal lath. Lap lath over lath, not paper to lath overlap. For horizontal overlaps the paper backing must lap shingle style behind the lath-to-lath overlap.

Apply Striplath, minimum 4" x 12" (102 mm x 305 mm), in type and weights of selected lath at casing bead corners if control joints aren't located there.

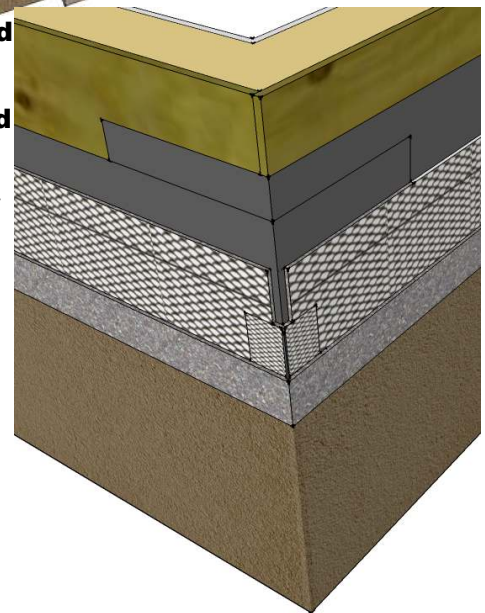
Inside and Outside Corners: Install corner lath at inside corners and corner bead at outside corners over lath. Attach through lath into framing at 6 inches (152 mm) on center with appropriate fasteners.

(*Note: the type fastener selected, its layout and pullout or withdrawal value from the supporting construction must be verified and approved by the project engineer/architect with respect to design wind load and local building code requirements).



Casing Bead
(above)

Corner Bead
(below)



Information contained in this product data sheet conforms to the standard detail recommendations and specifications for the installation of Master Wall Inc.® products and is presented in good faith. Master Wall Inc.® assumes no liability, expressed or implied as to the architecture, engineering, or workmanship of any project. This information may be concurrent with, or superseded by other applicable documents, such as specifications and details. Contact Master Wall Inc.® for the most current product information. ©2016 Master Wall Inc.®

 **Master Wall Inc.®**
Building a Culture of Excellence
masterwall.com

PO Box 397 • Fortson • GA • 31808 • 800-755-0825 • Tech: 800-760-2861