

Project Submittal Package



Project:
Location:
Architect:
General Contractor:
Applicator:



Master Wall Inc.®



System Data Sheets Product Data Sheets Sample Warranty
 Specifications Details Web Link (click here)

10-year

PO Box 397

Fortson

GA

31808

800-755-0825

masterwall.com

Cemplaster Fiberstucco Deluxe10

Premium stucco system with a reinforced leveling base coat and elastomeric textured finish

- **Durable Cemplaster Fiberstucco with fibers for better crack resistance**
- **Stucco Ad-Liquid for improved tensile strength and flexibility**
- **WeatherStop waterproof base coat reinforced with standard mesh for a smooth finished surface with improved water resistance and exceptional crack resistance**
- **Primecoat Primer for improved adhesion and color retention**
- **Superior Elastomeric Plus Finish bridges minor hairline cracks common in stucco**
- **Upgraded lath for a long lasting system**
- **10-year labor/material warranty**



System Specification includes:

- **Cemplaster Fiberstucco 1/2" (12.7 mm) thick with 2.5#/sy metal lath and Stucco Ad-Liquid**
- **WeatherStop for Stucco with Master Wall Reinforcing Mesh**
- **Primecoat Primer**
- **Superior Elastomeric Plus Finish**

masterwall.com

Corporate Office P.O. Box 397 Fortson, GA 31808 800.755.0825



Cemplaster Fiberstucco Deluxe 10 System

Short Form Specification

PART 1 GENERAL

Materials and installation of a Master Wall® Cemplaster Fiberstucco system.

PART 2 PRODUCTS

2.01 MANUFACTURERS

A. Master Wall Inc.®, Cemplaster Fiberstucco Deluxe 10 System.

2.02 MOISTURE BARRIER (WRB) (supplied by various manufacturers) : WRB01 Minimum 2-layers of 15-lb/100 ft² (0.683 kg/m²) vapor permeable asphalt saturated felt in compliance with ASTM D 226, Type I or similar in accordance with building code.

2.03 Cemplaster Fiberstucco (CFS): Master Wall® Cemplaster Fiberstucco factory proportioned, fiber reinforced Portland cement based stucco for trowel or pump application, field mixed with graded sand (ASTM C 897) and water, Master Wall® Ready Cemplaster Fiberstucco factory proportioned, fiber reinforced Portland cement based stucco for trowel or pump application, field mixed with water. Installed thickness shall be: 1/2" (12.7 mm) CFS02, CFS03.

2.04 STUCCO BONDING AGENTS AND ADDITIVES (SA): SA01 Master Wall® Stucco Ad Liquid, mixed 3 quarts (2.8 liters) per mix of Cemplaster Fiberstucco, 1 quart (0.95 liters) of Ready Cemplaster Fiberstucco.

2.05 LEVELING BASE COATS (LBC): LBC02 Reinforced leveling base coat of Master Wall® WeatherStop embedded in Master Wall® Standard Mesh.

2.06 PRIMER (PRIME): PRIME01 Master Wall® Primecoat or Sanded Primecoat: acrylic-based tinted primer.

2.07 FINISH COAT (FIN): FIN02 Superior Elastomeric Plus Finish: Master Wall Inc.® Superior Finishes using elastomeric polymers to bridge minor cracking. The following textures are available: Perfect2.0, Fine Sand 1.0, Medium Sand 1.5, Versatex 0.5..

2.08 LATH (supplied by others; select one depending on type construction): CFS03, ½" thick Cemplaster Fiberstucco Minimum 2.5 lb./yd² (1.4 kg/m²) self-furred galvanized steel diamond mesh metal lath in compliance with ASTM C 847. Striplath Minimum 4" x 12" (102 mm x 305 mm), in types and weights noted above.

2.09 MECHANICAL FASTENING & ATTACHMENT (by others)

Appropriate non-corroding fasteners, depending on the type framing or substrate:

Wood Framing--minimum 11 gauge, 7/16 inch (11 mm) diameter head galvanized roofing nails with minimum ¾ inch (19mm) penetration into studs or minimum #8 Type S wafer head fully threaded corrosion resistant screws with minimum ¾ inch (19 mm) penetration into studs.

Steel Framing—minimum #8 Type S or S-12 wafer head fully threaded corrosion resistant screws with minimum 3/8-inch (9.5 mm) penetration into studs.

Concrete or Masonry—minimum # 8 wafer head fully threaded corrosion resistant screws for masonry with minimum 1 inch (25 mm) penetration into substrate and approved corrosion resistant hand, power or powder actuated stub nails with a minimum 3/8" (9.5 mm) heads.

For stainless steel, use washers with galvanized fasteners or use stainless steel fasteners to avoid galvanic reaction.

Tie Wire—18 gauge galvanized and annealed low-carbon steel in compliance with ASTM A 641 with Class I coating, 18 ga stainless steel wire for stainless steel lath and accessories.

2.10 ACCESSORIES (by others)

Weep screed, casing bead, corner bead, cornerite, corner lath, expansion and control joint accessories. All accessories shall meet the requirements of ASTM C 1063 and its referenced documents: PVC plastic in compliance with ASTM D 1784, cell classification 13244C, Zinc in compliance with ASTM B 69, Galvanized metal in compliance with ASTM A 653 with G60 coating, 304 stainless steel trim manufactured in accordance with ASTM C841. All accessories shall have perforated or expanded flanges and shall be designed with grounds for the specified thickness of the Cemplaster Fiberstucco.

2.11 JOB MIXED INGREDIENTS

Water: Clear, clean and potable without any foreign matter in the solution that may affect the color and setting qualities of the cement, adhesive, base or finish coat. Sand: Clean, well graded sand free of deleterious materials in compliance with ASTM C 897. Cement: Type I or I-II Portland cement meeting ASTM C-150.

2.12 MIXING

Mix products in accordance with manufacturer's recommendations.

PART 3 EXECUTION

3.01 INSTALLATION

Install products in strict accordance with manufacturer's written installation instructions.

Member

NOCSA

Information contained in this product data sheet conforms to the standard detail recommendations and specifications for the installation of Master Wall Inc.® products and is presented in good faith. Master Wall Inc.® assumes no liability, expressed or implied as to the architecture, engineering, or workmanship of any project. This information may be concurrent with, or superseded by other applicable documents, such as specifications and details. Contact Master Wall Inc.® for the most current product information. ©2016 Master Wall Inc.®



PO Box 397 • Fortson • GA • 31808 • 800-755-0825 • Tech: 800-760-2861



Master Wall Inc.®

Building a Culture of Excellence

Master Wall Cemplaster Fiberstucco Deluxe 10 System 10 Year Labor & Material Limited Warranty

Master Wall Inc. warrants the properly designed and installed Cemplaster Fiberstucco system and materials for 10 years from the date of installation. Master Wall Inc.'s exclusive liability under this warranty is to supply replacement materials and labor or corrective procedures, if it is shown that the materials supplied by Master Wall Inc., were defective when installed by the Master Wall Inc. certified applicator. Remedies shall be solely determined by Master Wall Inc. and no other warranties are expressed or implied. For a valid warranty, the system and products must be installed in accordance with Master Wall Inc.'s written recommendations, specifications, details, bulletins and other project-specific written recommendations. Master Wall Inc. must be notified in writing within 10 business days of the original discovery of the defect.

Master Wall Inc., is not responsible for structural conditions, design conditions beyond those noted in our literature, architecture, engineering or workmanship of any project. The Cemplaster Fiberstucco system may have hairline cracks, spalling, fastener popping or efflorescence, which are not considered product defects. Materials must be properly stored and applied in a timely manner. Workmanship, aesthetics and installation are beyond the scope of this warranty as are any deviations from Master Wall Inc. Documents not specifically approved in writing.

Abuse, misuse, excessive weather or environmental conditions beyond what the products or systems have been tested, designed or approved for is expressly limited. Certain colors with organic pigments are less fade-resistant than others. The building, system and products must be properly maintained in accordance with Master Wall Inc., documents, local environmental conditions and good building practices. In no case is Master Wall Inc. responsible for incidental and consequential damages.

This warranty becomes effective only when all bills for the components of the system have been paid.

Except as stated, Master Wall, Inc., expressly disclaims any warranty of merchantability or fitness for a particular purpose. The above remedies are to be deemed exclusive.

Project:

Applicator:

Warranty Date:

This is not the final warranty. For a valid warranty click on the support tab at masterwall.com and request a warranty. Warranties are not valid until issued.



Master Wall Inc.
Building a Culture of Excellence

PRODUCT DATA

CEMPLASTER FIBERSTUCCO

Master Wall® Cemplaster Fiberstucco is a fibered Portland cement-based bagged stucco with exceptional workability, open working time, water retention, early strength, shrinkage resistance and long-term durability.

FEATURES & BENEFITS

- Concentrate, mix with sand and water
- Fibered for better crack resistance
- Can be modified with Stucco Ad-Liquid for better tensile, compression and mold-resistance
- For application over lath or direct-applied to approved substrates
- Manufacturer Warranty

Application Temperature: 40°-110°F (5°-43°C)

Working Time: 1 hour

Set Time: 1-2 hours

Cure Time: 48-72 hrs at room temperature, working and drying time will vary with temperature and humidity.

JOB CONDITIONS

Air and substrate temperature for application of Cemplaster Fiberstucco must be 40°F (5°C) or higher and must remain 40°F (5°C) or higher for a minimum of 24 hours. Provide temporary protection to protect the wall system from damage until permanent flashings, caps and sealants are installed. Store materials in a dry place, within prescribed temperature limits and out of direct sunlight. Working and drying times are based upon normal room temperature conditions and will vary with temperature and humidity.

PREPARATION

Preparation - The substrate must be approved by Master Wall Inc.®, clean, dry, structurally sound and free of efflorescence, oil, grease, form release agents and curing compounds or anything that would affect bond. Painted surfaces are not acceptable and must be removed or metal lath applied. All sheathed applications must receive a minimum of 2-layers code-approved asphalt felt or equivalent.

Prepare smooth or non-absorbent solid substrates by one of the following methods or a combination; Sandblasting, chipping or acid etching, A dash-bond coat applied forcefully, Bonding compounds such as Master Wall® Stucco Ad-Liquid or BA57, Furred or self-furring metal plaster bases as per ASTM C1063.

Coverage per bag (sf/sm)*

3/8" (9.5 mm) thick: 80 sf (7.4 sm)

1/2" (12.7 mm) thick: 70 sf (6.5 sm)

3/4" (19 mm) thick: 40 sf (3.7 sm)

7/8" (22 mm) thick: 34 sf (3.1 sm)

**All coverage is approximate and depend upon substrate, details and individual application*

Packaging/Shelf Life/Storage

Packaging: 80 lb. (36 kg) moisture resistant bags.

Shelf Life: 1 year

Storage: Protect from weather in a cool dry area, with low humidity.

Technical Data

- ASTM C109 Compressive Strength -1900 psi
- ASTM E330 Wind-rated Assemblies -81-108 psf Ultimate Load
- ASTM G155 Accelerated Weathering - Pass
- ICC-ES AC11 Durability Testing - Pass
- ASTM E136 - Noncombustible
- ASTM C926 compliant following standard practices

Recognized in INTERTEK CCRR-0215

APPLICATION PROCEDURE

Mixing Instructions: Each bag of Cemplaster Fiberstucco is mixed with 200 lbs (90.7 kg) of sand aggregate (ASTM C897 or ASTM C144) and clean, potable water (200 lbs is roughly 2.5 cubic feet (0.07 cubic meters) of clean, damp-loose sand or 2-3/4 Master Wall® pails, filled). Using a clean mixer, first add 1/2 to 2/3 the water required, 1/2 the sand, 1 bag Cemplaster Fiberstucco, then the rest of the sand and water to achieve the desired workability. Mix materials for 3 to 5 minutes after all materials are in the mixer. Total water content can vary between 4 to 6.5 gallons (15-24.5L). Stucco Ad-Liquid may also be used instead of an equal amount of water (up to 5 gallons, 18.9L). See system data sheet for specific levels required for increased warranties.

Tempering—The mixed stucco can be re-tempered one time within 1 hour. Material older than 1-1/2 hours should be discarded.

Application

Direct Applied to Masonry: Dampen absorptive masonry just before application with water or Master Wall® BA57 Bonding Agent.

Scratch Coat: apply Cemplaster Fiberstucco with sufficient pressure to key into and embed the metal lath (if used). Apply sufficient material, approximately half the Cemplaster Fiberstucco ground thickness to cover the metal lath and to permit scoring the surface. Score the Cemplaster Fiberstucco horizontally upon completion of each panel in preparation for brown coat if a “double back” application of a wet scratch and brown coat isn’t being used.

Brown Coat: as soon as the scratch coat is firm enough to receive the brown coat without damage, apply the brown coat with sufficient pressure to ensure intimate contact with the first coat to an approximate thickness as needed to bring the Cemplaster Fiberstucco to a uniform thickness that matches the grounds of the accessories. Use a rod or straight edge to bring the surface to a true, even plane. Fill depressions in plane with Cemplaster Fiberstucco.

After the Cemplaster Fiberstucco has become slightly firm float the surface lightly with a Darby or wood float to densify the surface and to provide a smooth, even surface.

CLEAN UP

Tools and equipment can be cleaned with soapy water while the Cemplaster Fiberstucco mixture is still wet.

Curing Recommendations

Cure following ASTM C926 guidelines or other method acceptable to the design professional for 48-72 hours. Mixes with Master Wall® Stucco Ad Liquid do not need moist curing.

Allow to cure until clean, dry and hard before finishing:

- Typically 7-14 days if no Master Wall® Stucco Ad Liquid is used.
- After 72 hours if Master Wall® Stucco Ad Liquid is used provided the Cemplaster Fiberstucco is clean, dry and hard.
- After 24 hours if using a leveling base coat (LBC).

Hazard: This chemical is not considered hazardous according to the OSHA Hazard Communication Standard 2012 (29 CFR 1910.1200).

WARNING: Products containing crystalline silica (airborne particles of respirable size) are known to the State of California to cause cancer. For more information go to www.p65Warnings.ca.gov.

VOC: Less than 50 g/L.

Approved Substrates

Self-furring Metal Lath

Concrete

Brick

Masonry

Others approved in writing

Information contained in this product data sheet conforms to the standard detail recommendations and specifications for the installation of Master Wall Inc.® products and is presented in good faith. Master Wall Inc.® assumes no liability, expressed or implied as to the architecture, engineering, or workmanship of any project. This information may be concurrent with, or superseded by other applicable documents, such as specifications and details. Contact Master Wall Inc.® for the most current product information. ©2022 Master Wall Inc.®



Master Wall Inc.
Building a Culture of Excellence

PRODUCT DATA

READY CEMPLASTER FIBERSTUCCO

Master Wall® Ready Cemplaster Fiberstucco is a fibered Portland cement-based bagged stucco with exceptional workability, open working time, water retention, early strength, shrinkage resistance and long-term durability.

FEATURES & BENEFITS

- Ready to use, mix with water
- Great for jobsites with limited space for on-site storage
- Fibered for better crack resistance
- Can be modified with Stucco Ad-Liquid for better tensile, compression and mold-resistance
- For application over lath or direct-applied to approved substrates
- Manufacturer Warranty

Application Temperature: 40°-110°F (5°-43°C)

Working Time: 1 hour

Set Time: 1-2 hours

Cure Time: 48-72 hrs at room temperature, working and drying time will vary with temperature and humidity.

JOB CONDITIONS

Air and substrate temperature for application of Ready Cemplaster Fiberstucco must be 40°F (5°C) or higher and must remain 40°F (5°C) or higher for a minimum of 24 hours. Provide temporary protection to protect the wall system from damage until permanent flashings, caps and sealants are installed. Store materials in a dry place, within prescribed temperature limits and out of direct sunlight. Working and drying times are based upon normal room temperature conditions and will vary with temperature and humidity.

PREPARATION

The substrate must be approved by Master Wall Inc.®, clean, dry, structurally sound and free of efflorescence, oil, grease, form release agents and curing compounds or anything that would affect bond. Painted surfaces are not acceptable and must be removed or metal lath applied. All sheathed applications must receive a minimum of 2-layers code-approved asphalt felt or equivalent.

Prepare smooth or non-absorbent solid substrates by one of the following methods or a combination; Sandblasting, chipping or acid etching, A dash-bond coat applied forcefully, Bonding compounds such as Master Wall® Stucco Ad-Liquid or BA57, Furred or self-furring metal plaster bases as per ASTM C1063.

Coverage perbag (sf/sm)*

3/8" (9.5 mm) thick: 22 sf (2 sm)

1/2" (12.7 mm) thick: 20 sf (1.8 sm)

3/4" (19 mm) thick: 11 sf (1 sm)

7/8" (22 mm) thick: 9.4 sf (0.9 sm)

**All coverage is approximate and depend upon substrate, details and individual application*

Packaging/Shelf Life/Storage

Packaging: 80 lb. (36 kg) moisture resistant bags.

Shelf Life: 6-12 months

Storage: Protect from weather in a cool dry area, with low humidity.

Technical Data

- ASTM C109 Compressive Strength 1900 psi
- ASTM E330 Wind-rated Assemblies 81-108 psf Ultimate Load
- ASTM G155 Accelerated Weathering - Pass
- ICC-ES AC11 Durability Testing - Pass
- ASTM E136 - Noncombustible
- ASTM C926 compliant following standard practices

Recognized in IAPMO UES ER-0381

APPLICATION PROCEDURE

Mixing - Each bag of Ready Cemplaster Fiberstucco is mixed clean, potable water. Using a clean mixer, first add 1/2 to 2/3 the water required, 1 bag Ready Cemplaster Fiberstucco, then the rest of the water to achieve the desired workability. Mix materials for 3 to 5 minutes after all materials are in the mixer. Total water content can vary between 1 to 1.5 gallons (3.8-5.7L). Stucco Ad-Liquid may also be used instead of an equal amount of water. See system data sheet for specific levels required for increased warranties.

Tempering—The mixed stucco can be re-tempered one time within 1 hour. Material older than 1-1/2 hours should be discarded.

Application

Direct Applied to Masonry: Dampen absorptive masonry just before application with water or Master Wall® BA57 Bonding Agent.

Scratch Coat: apply Ready Cemplaster Fiberstucco with sufficient pressure to key into and embed the metal lath (if used). Apply sufficient material, approximately half the Ready Cemplaster Fiberstucco ground thickness to cover the metal lath and to permit scoring the surface. Score the Ready Cemplaster Fiberstucco horizontally upon completion of each panel in preparation for brown coat if a “double back” application of a wet scratch and brown coat isn’t being used.

Brown Coat: as soon as the scratch coat is firm enough to receive the brown coat without damage, apply the brown coat with sufficient pressure to ensure intimate contact with the first coat to an approximate thickness as needed to bring the Ready Cemplaster Fiberstucco to a uniform thickness that matches the grounds of the accessories. Use a rod or straight edge to bring the surface to a true, even plane. Fill depressions in plane with Ready Cemplaster Fiberstucco.

After the Ready Cemplaster Fiberstucco has become slightly firm float the surface lightly with a Darby or wood float to densify the surface and to provide a smooth, even surface.

CLEAN UP

Tools and equipment can be cleaned with soapy water while the Ready Cemplaster Fiberstucco mixture is still wet.

Curing Recommendations

Cure following ASTM C926 guidelines or other method acceptable to the design professional for 48-72 hours. Mixes with Master Wall® Stucco Ad Liquid do not need moist curing.

Allow to cure until clean, dry and hard before finishing:

- Typically 7-14 days if no Master Wall® Stucco Ad Liquid is used.
- After 72 hours if Master Wall® Stucco Ad Liquid is used provided the Cemplaster Fiberstucco is clean, dry and hard.
- After 24 hours if using a leveling base coat (LBC).

Hazard: This chemical is not considered hazardous according to the OSHA Hazard Communication Standard 2012 (29 CFR 1910.1200).

WARNING: Products containing crystalline silica (airborne particles of respirable size) are known to the State of California to cause cancer. For more information go to www.p65Warnings.ca.gov.

VOC: Less than 50 g/L.

Approved Substrates

Self-furring Metal Lath
Concrete
Brick
Masonry
Others approved in writing

Information contained in this product data sheet conforms to the standard detail recommendations and specifications for the installation of Master Wall Inc.® products and is presented in good faith. Master Wall Inc.® assumes no liability, expressed or implied as to the architecture, engineering, or workmanship of any project. This information may be concurrent with, or superseded by other applicable documents, such as specifications and details. Contact Master Wall Inc.® for the most current product information.

©2022 Master Wall Inc.®



Master Wall Inc.®
Building a Culture of Excellence

PRODUCT DATA

CEMPLASTER FIBERSTUCCO CO-BRAND PRODUCTS

As part of our Cemplaster Fiberstucco Systems, Master Wall Inc.® allows select products as part of our warranty program. Warranties are available up to 20-years depending upon product selections and combinations.

FEATURES & BENEFITS

- Warranties up to 20-years through Master Wall Inc.®
- Preblended and Concentrate options
- Locally and regionally available for LEED compliance
- Engineered for consistency

Warranties for all projects will be provided by Master Wall® following our regular process. For coverage the following needs to be completed:

- Materials must be purchased through an authorized Master Wall® distributor.
- A warranty must be requested for the project, including all QUIKRETE® requirements noted on the request form.
- The applicator must be certified and current.
- To request a warranty go to the Tech/Support page at masterwall.com and fill out the form.

See our Systems page for Cemplaster Fiberstucco Warranties

Information contained in this product data sheet conforms to the standard detail recommendations and specifications for the installation of Master Wall Inc.® products and is presented in good faith. Master Wall Inc.® assumes no liability, expressed or implied as to the architecture, engineering, or workmanship of any project. This information may be concurrent with, or superseded by other applicable documents, such as specifications and details. Contact Master Wall Inc.® for the most current product information. ©2021 Master Wall Inc.®



Master Wall Inc.®
Building a Culture of Excellence

CO-BRAND PRODUCTS

QUIKRETE® One Coat Fiberglass Reinforced Stucco (FRS) (No. 1200 Sanded, No. 1216-Concentrated)

QUIKRETE® Base Coat Stucco Scratch & Brown (No. 1139) & Base Coat Stucco - Pump Grade (No. 1139-86)*

QUIKRETE® Base Coat Stucco with Water-Stop (No. 1139-89)*

QUIKRETE® Base Coat Stucco - Pump Grade (No. 1139-86)*

FRS Lightweight Stucco (No. 1201-56)*

SPEC MIX® SCRATCH AND BROWN FIBER REINFORCED STUCCO(SU-04)*

SPEC MIX® Scratch and Brown Preblended Stucco*

SPEC MIX® Fiber Base Coat (FBC)

WESTERN 1-Kote Gray Concentrate

WESTERN 1-Kote Gray Premium Concentrate

WESTERN 1-Kote Premium Sanded Gray

WESTERN 1-Kote Sanded Gray

*Apply these stucco products in accordance with ASTM C926 and Master Wall® requirements.



Stucco Ad-Liquid

Systems

Cemplaster Fiberstucco
Traditional Stucco
Branded Manufactured Stucco

VOC: 5 g/l

Manufacture Locations:

30058 • 77474 • 84651

Recycled Content: 0%

Packaging:

5 gallon (19L) pail

55 gallon (208L) drums

Pail Weight: 42 lbs (19 kg)

Drum Weight: 462 lbs (210

kg)

Shelf Life: 2 years

Suggested Levels (Varies)

**Cemplaster Fiberstucco: 3
quarts to 5 gallons (2.8-19 L)
per mix**

**Stucco: 6 quarts to 5 gallons
(5.6-19 L) per mix**

Stucco Ad-Liquid is an easy to use polymer modifier that is added directly to traditional stucco



or Cemplaster Fiberstucco mix to improve the overall quality of the material.

- **Improved Compressive Strength**
- **Improved Tensile Strength**
- **Improved Weather Resistance**
- **Mold-X™ Bactericide included**
- **Reduced Shrinkage**
- **Reduces Stucco Cracking**
- **Reduced Brittleness**
- **Eliminates Fogging Requirement**
- **Slows Cure and Increases Flexibility**



masterwall.com

PO Box 397 • Fortson • GA • 31808 • 800-755-0825 • Tech: 800-760-2861



Stucco Ad-Liquid

Temp: 40°-110°F (5°-43°C) • Working Time: 1.5 hr • Dry Time: 72 hrs
at room temperature, working and drying time will vary with temperature and humidity

Application Procedure

Job Conditions - Air and substrate temperature for application of Stucco Ad-Liquid must be 40°F (5°C) or higher and must remain 40°F (5°C) or higher for a minimum of 24 hours. Surface must be clean, dry, structurally sound and free of efflorescence, oil, grease, form release agents, paint and curing compounds.

Temporary Protection – Provide temporary and permanent protection to prevent water entry behind the stucco.

Proportioning – Proportions will vary depending upon use. Reference Master Wall® Cemplaster Fiberstucco specifications for warranted system proportions. In general, the product will achieve minimal properties such as improved crack resistance with levels as low as one quart (0.95L) per 280# (127 kg) of mixed stucco. Substituting Stucco Ad-Liquid for water in the stucco mix provides optimal performance. Vary proportions to meet specific project requirements or contact Master Wall for recommendations.

Mixing – Use non air entrained stucco mix. Slowly add Stucco Ad-Liquid to the mixture and mix for a short time (about 1 to 2 minutes) to avoid air entrapment.

Application

Apply stucco mix according to locally, regionally and nationally accepted practices to the specified thicknesses. When drying, Stucco Ad-Liquid forms a film or sheen that aids in the hydration of the stucco.

For Professional Results

Do not use with air entrained cement mixes or with air entraining admixtures. Do not use where air circulation is limited.

Protect from extreme water exposure for a minimum of 24 hours.

Fogging the wall is not recommended when Stucco Ad-Liquid is used.

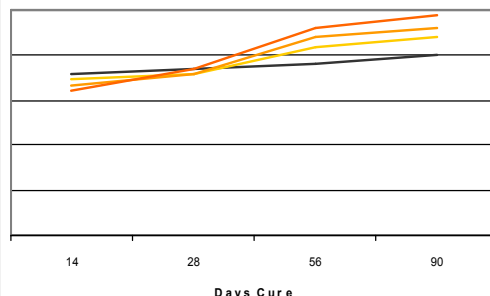
Do not use as a stucco surface primer or external bonding agent—use Primecoat or Roller-flex depending upon application.

Do not over mix.

Clean Up

Tools and equipment can be cleaned with soapy water when the stucco mixture is wet.

Stucco Ad-Liquid Performance



SA01 Master Wall® Stucco Ad Liquid, mixed 3 quarts (2.8 liters) per mix of Cemplaster Fiberstucco, 1 quart (0.95 liters) of Ready Cemplaster Fiberstucco.

SA02 Master Wall® Stucco Ad Liquid, mixed 2 gallons (7.6 liters) per mix of Cemplaster Fiberstucco, 3 quarts (2.8 liters) of Ready Cemplaster Fiberstucco.

SA03 Master Wall® Stucco Ad Liquid, mixed 5 gallons (19 liters) per mix of Cemplaster Fiberstucco, 1-1/2 gallons (5.7 liters) of Ready Cemplaster Fiberstucco.

Member



Information contained in this product data sheet conforms to the standard detail recommendations and specifications for the installation of Master Wall Inc.® products and is presented in good faith. Master Wall Inc.® assumes no liability, expressed or implied as to the architecture, engineering, or workmanship of any project. This information may be concurrent with, or superseded by other applicable documents, such as specifications and details. Contact Master Wall Inc.® for the most current product information.



Master Wall Inc.®
Building a Culture of Excellence

masterwall.com

PO Box 397 • Fortson • GA • 31808 • 800-755-0825 • Tech: 800-760-2861



Stucco Accessories

Systems

Cemplaster Fiberstucco

Manufacture Locations:

Verify with manufacturer

Recycled Content:

Varies with manufacturer

Packaging (trims): Typically 10' lengths

Weight: Varies

Typical Grounds

(thickness): 3/8" (9.5mm),
1/2" (13mm), 5/8" (16mm),
3/4" (19mm), 7/8" (22mm)

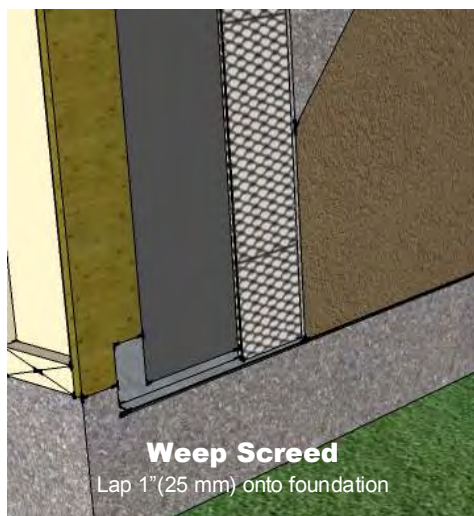
Materials:

1. PVC, ASTM D 1784.
2. Galvanized Metal, ASTM A 653 with G60 or G90 coating.
3. Zinc, ASTM B 69.
4. Stainless Steel, ASTM C841 Type 304.

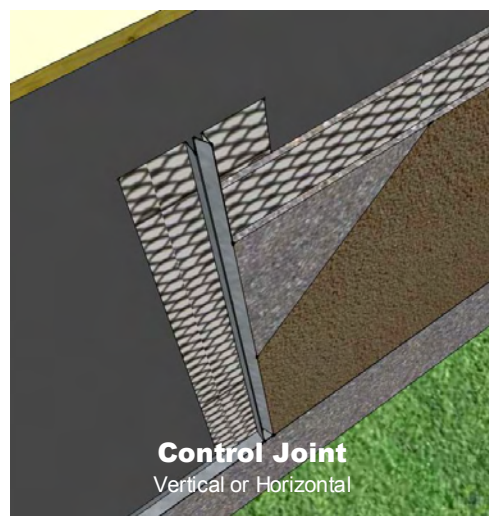
Lath Reinforcement:

CFS01, 3/8" thick No. 17 gauge galvanized steel woven wire fabric, ASTM C1032.
CFS03, 1/2" thick 2.5 lb./yd² (1.4 kg/m²) self-furred galvanized steel diamond mesh metal lath, ASTM C 847.
CFS03-SS, 1/2" thick 2.5 lb./yd² (1.4 kg/m²) self-furred stainless steel diamond mesh metal lath, ASTM C 847.
CFS04 & 05, 3/4 - 7/8" thick 3.4 lb./yd² (1.8 kg/m²) self-furred galvanized steel diamond mesh metal lath, ASTM C 847.
CFS04 & 05-SS, 3/4 - 7/8" thick 3.4 lb./yd² (1.8 kg/m²) self-furred stainless steel diamond mesh metal lath, ASTM C 847, 304 or 316 stainless steel.

Stucco accessories are used to help gauge the thickness of stucco systems, help control stucco movement and form corners. Lath reinforcement is used to reinforce the stucco.



Weep Screenshot
Lap 1" (25 mm) onto foundation



Control Joint
Vertical or Horizontal

Manufacturers

Amico Building Products^{1,2,3,4} 800-366-2642, www.amico-lath.com

CEMCO² 800-775-2362, www.cemcosteel.com

ClarkDietrich Building Systems^{1,2,3} 513-870-1100,
www.clarkdietrich.com

Plastic Components¹ 800-327-7077, www.plasticcomponents.com

Vinyl Corp.¹ 800-648-4695, www.vinylcorp.com

Wind-Lock¹ 800-872-5625, www.wind-lock.com

Product Test Standards

ASTM A653, ASTM B69, ASTM C841, ASTM C847, ASTM C926, ASTM C1063, ASTM D1784, Plastic may not be suitable for non-combustible construction assemblies.

**Master Wall Inc.**[®]
Building a Culture of Excellence
masterwall.com

PO Box 397 • Fortson • GA • 31808 • 800-755-0825 • Tech: 800-760-2861



Stucco Accessories

Application Procedure

After satisfactory inspection of surfaces and correction of any deviations from specification requirements commence the Cemplaster Fiberstucco installation in accordance with Master Wall Specifications.

Weep Screed Installation

Install foundation weep screed at the base of the wall securely to framing with the appropriate fastener. Locate foundation weep screed so that it overlaps the joint between the foundation and framing by a minimum of 1 inch (25 mm). Locate the foundation weep screed minimum 4 inches (101 mm) above earth grade, 2 inches (51 mm) above finished grade (paved surfaces, for example).

Weather Protection

Weather barrier will lap onto foundation weep screed as noted in Master Wall® details. Verify that WRB installation is complete.

Casing Bead and Expansion Joint Installation

Install casing beads at Cemplaster Fiberstucco terminations—doors, windows and other through wall penetrations. Install expansion joints (or back-to-back casing beads) at building expansion joints, where the Cemplaster Fiberstucco is to be installed over dissimilar construction or substrates, at changes in building height, at floor lines, columns, and cantilevered areas. Install full accessory pieces where possible and avoid small pieces. Seal adjoining pieces by embedding ends in sealant. Abut horizontal into vertical joint accessories. Attach at 6-inch (152 mm) centers into framing with appropriate fasteners.

(Note: refer to architectural drawings for joint locations and accessory type. Moisture protection must be continuous behind joints and accessories.)

Control Joint Installation

Install control joints every 144 ft² (13.4 m²) for walls and 100 ft² (9.3 m²) maximum (as indicated on the construction documents). Tack in place as insure proper alignment during the application of the lath. Wire tie control joints to lath at 6 inches (152 mm) on center if framing members aren't present under the accessory. Seal any exposed ends and edges preferably by setting them in sealant during installation to prevent water entry.

Lath Installation

Diamond Mesh Metal Lath: General—install metal lath with the long dimension at right angles to structural framing. Terminate lath at expansion joints. Do not install continuously beneath joints. Seams/overlaps – overlap side seams a minimum of ½ inch (13 mm) and end seams a minimum 1-inch (25 mm). Stagger end seams. Overlap casing beads and expansion joints minimum 1 inch (25 mm) over the narrow wing accessories and 2 inches over expanded flange accessories. Attachment—fasten securely through sheathing into structural framing at 6 inches (152 mm) on center maximum vertically and 16-24 inches (41-61 cm) on center horizontally*. Wire tie horizontal laps at 8 inches (204 mm) on center at: side laps, accessory overlaps, and where end laps occur between supports.

Florida HVHZ: 7/8" minimum thickness of Cemplaster Fiberstucco, 3.4#/#sy metal lath fastened 4" (102 mm) on center vertically and 16" (41 cm) on center horizontally.

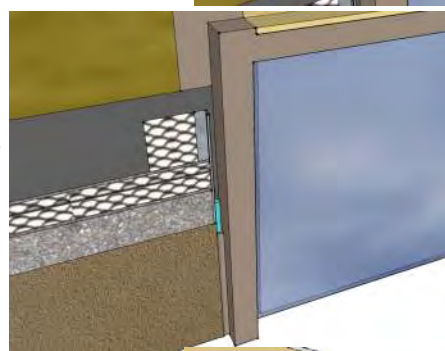
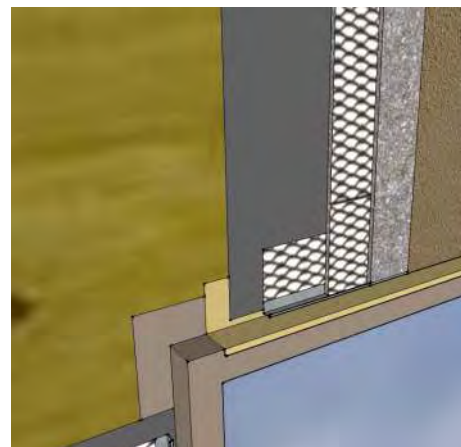
Welded wire fabric lath—follow installation as for metal lath except overlap all seams by one mesh minimum. **Paper-backed lath**—follow installation as for metal lath. Lap lath over lath, not paper to lath overlap. For horizontal overlaps the paper backing must lap shingle style behind the lath-to-lath overlap.

Apply Striplath, minimum 4" x 12" (102 mm x 305 mm), in type and weights of selected lath at casing bead corners if control joints aren't located there.

Inside and Outside Corners: Install corner lath at inside corners and corner bead at outside corners over lath. Attach through lath into framing at 6 inches (152 mm) on center with appropriate fasteners.

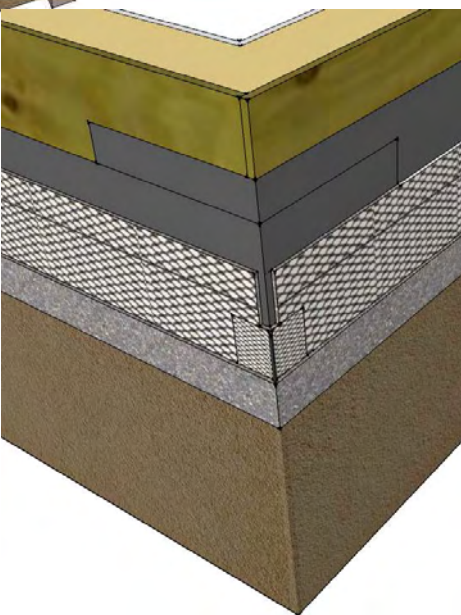
(*Note: the type fastener selected, its layout and pullout or withdrawal value from the supporting construction must be verified and approved by the project engineer/architect with respect to design wind load and local building code requirements).

Information contained in this product data sheet conforms to the standard detail recommendations and specifications for the installation of Master Wall Inc.® products and is presented in good faith. Master Wall Inc.® assumes no liability, expressed or implied as to the architecture, engineering, or workmanship of any project. This information may be concurrent with, or superseded by other applicable documents, such as specifications and details. Contact Master Wall Inc.® for the most current product information. ©2016 Master Wall Inc.®



Casing Bead
(above)

Corner Bead
(below)



WeatherSTOP

To finish strong you need a leveling base coat with superior weather resistance to stop water before it enters your stucco or wall. Flexible, fibered WeatherSTOP remains flexible, weather resistant and embeds easily into Master Wall® mesh. WeatherSTOP is an alternative to a separate fluid applied water barrier.

Coverage per pail

Embedding Single-layer of Mesh: 200-220 sf (18.6-20 sm)

Double Layer of Mesh: 66-200 sf (6-18.6 sm)

Coverage information

Coverage may vary depending upon application technique and surface conditions.

Packaging/Shelf Life/Storage

Packaging: 5 gallon (19L) pail

Pail Weight: 60 lbs (27 kg)

Shelf Life: 2 years

Storage: Protect from extreme heat (90°F (32°C)), freezing and direct sunlight.

Technical Data

ASTM C67 Freeze/Thaw: Pass

ASTM C297/E2134: 94 psi

ASTM E96: Vapor Permeable, >10 perms

ASTM E331 as drainage media: 97.7%

ASTM E2485 Freeze/Thaw: Pass

Hazard: This chemical is not considered hazardous according to the OSHA Hazard Communication Standard 2012 (29 CFR 1910.1200).

VOC: Less than 50 g/L.

Features & Benefits

- Waterproof acrylic polymers
- Fibered for additional strength
- Stops water at the surface
- Highly flexible
- Excellent water holdout
- Protects stucco keeping it safe and dry
- Dry stucco does not support mold growth

Application Temperature: 40°-110°F (5°-43°C) • Working Time: 1 hour • Dry Time: 12 hours

at room temperature, working and drying time will vary with temperature and humidity

Surface Preparation

The substrate must be approved by Master Wall Inc.®, clean, dry, structurally sound and free of efflorescence, oil, grease, form release agents and curing compounds or anything that would affect bond. Stucco should cure a minimum of 24 hours and concrete/masonry a minimum of 28 days before application. Painted surfaces are not acceptable and must be removed. Surface should be true to within 1/4" in 10'-0" (6 mm in 3 m) and clear of excessive fins and voids.

WeatherSTOP

Health & Safety

WARNING!

Causes eye and skin irritation.

Precautionary Statement

Wash hands thoroughly after handling. Wear protective gloves/protective clothing/eye protection/face protection.

FIRST AID MEASURES

Eye Contact: Immediately flush eyes with plenty of water for at least 15 to 20 minutes. Ensure adequate flushing of the eyes by separating the eyelids with fingers. Get immediate medical attention.

Skin Contact: Immediately wash skin with plenty of soap and water for 15 to 20 minutes, while removing contaminated clothing and shoes. Get medical attention if irritation develops or persists.

Inhalation: If inhaled, remove to fresh air. If not breathing, give artificial respiration or give oxygen by trained personnel. Seek immediate medical attention.

Ingestion: If swallowed, do NOT induce vomiting. Call a physician or poison control center immediately. Never give anything by mouth to an unconscious person.

Store locked up. Dispose of contents/container in accordance with Local, State, Federal and Provincial regulation.

Spills: Collect with suitable absorbent material such as cotton rags.

Disposal: Dispose of in accordance with local, state or federal regulations.

Warning: KEEP CONTAINER CLOSED WHEN NOT IN USE. KEEP OUT OF THE REACH OF CHILDREN. NOT FOR INTERNAL CONSUMPTION. FOR INDUSTRIAL USE ONLY. Consult the Safety Data Sheet (SDS) in the Products section at masterwall.com for further health and safety information.

LIMITED WARRANTY

This product is subject to a written limited material or system warranty. Obtain a warranty from the Tech Support tab of our website. Refer to Specifications for more complete information on proper use and handling of this product.

Approved Substrates

Master Wall® Base Coats

Exterior gypsum sheathing
(ASTM C1396)

Glass Fiber Exterior Sheathing
(ASTM C1177) Dens Glass
Gold®, GlasRoc®
FiberBond®, Gold Bond e2xp®,
etc.

Cement Board Substrates
Durock®, PermaBase®, ProTEC
®, SelectCrete, Util-A-Crete®,
etc.

Surfaces of Brick, Concrete,
Masonry and Stucco

Others approved in writing

Application Procedure

Job Conditions - Air and substrate temperature for application of WeatherSTOP must be 40°F (5°C) or higher and must remain 40°F (5°C) or higher for a minimum of 24 hours. Provide temporary protection to protect the wall system from damage until permanent flashings, caps and sealants are installed. Store materials within prescribed temperature limits and out of direct sunlight. Working and drying times are based upon normal room temperature conditions and will vary with temperature and humidity.

Mixing - Thoroughly stir WeatherSTOP using a heavy duty 1/2" (12.7 mm) drill at 400 - 500 rpm and a heavy duty mixing paddle. Pour half of the stirred WeatherSTOP into a clean plastic pail. Up to 12 ounces (0.35L) of clean, potable water may be added to adjust workability. Add 20lbs (9 kg) Type I or I-II Portland cement to the half pail of WeatherSTOP and mix to a homogenous consistency. Let the mixture stand for 3 to 5 minutes and then stir to a creamy consistency. Do not exceed 24 ounces (0.7L) per pail. Do not over mix as faster setting or reduced working time can occur. Do not add accelerators or retarders to the WeatherSTOP mixture.

Application

Water Barrier Application – Apply the WeatherSTOP mixture over the entire surface of the approved substrate in a thickness of approximately 1/16" (1.6 mm).

With Optional Mesh Application – Apply the WeatherSTOP mixture over the entire surface of the approved substrate in a thickness greater than that of the reinforcing fabric being used (approximately 1/16" (1.6 mm) for Standard Mesh). Immediately embed the reinforcing fabric into the wet WeatherSTOP mixture and smooth from the center to the edge to avoid wrinkles. The reinforcing fabric must be continuous at all corners and lapped or abutted in accordance to Master Wall® Mesh data sheet requirements. Do not run mesh through control/expansion joints or accessories. The color of the mesh shall not be visible but a slight mesh pattern may be visible.

Clean Up—Tools and equipment can be cleaned with soapy water while the WeatherSTOP is still wet.

Limitations:

A Master Wall® Superior, Superior Elastomeric Plus or other approved Master Wall® finish must be used over the WeatherSTOP.

Surfaces exposed to the weather must be sloped (6:12 minimum).

Under certain conditions efflorescence on the surface during the cure process. This can be removed with a white vinegar solution.

WARNING, THIS PRODUCT CONTAINS SILICA

If sanding or scraping are performed, ventilate work area and/or use a NIOSH/MSHA-approved respirator in accordance with our Safety Data Sheet.

Information contained in this product data sheet conforms to the standard detail recommendations and specifications for the installation of Master Wall Inc.® products and is presented in good faith. Master Wall Inc.® assumes no liability, expressed or implied as to the architecture, engineering, or workmanship of any project. This information may be concurrent with, or superseded by other applicable documents, such as specifications and details. Contact Master Wall Inc.® for the most current product information. ©2021 Master Wall Inc.®



masterwall.com

PO Box 397 • Fortson • GA • 31808 • 800-755-0825



Master Wall Inc.®
Building a Culture of Excellence

PRODUCT DATA

AGGRE-FLEX MESH

Master Wall® Aggre-flex Mesh is a specially woven, glass fiber mesh with AR Coating (Alkali Resistive). Embedded in Master Wall® base coats, Aggre-flex Mesh is the key impact and tensile component in Master Wall® EIFS and wall systems. It can also improve crack resistance in Master Wall® Cemplaster Fiberstucco Systems, traditional stucco or foam shapes.

FEATURES & BENEFITS

- **Detail Mesh** – super soft, pliable mesh used for backwrapping, special shapes, and detail work.
- **Standard Mesh**–Standard weight mesh for wall areas and general detailing. Industry leading impact resistance.
- **Hi-Tech Mesh**–Upgraded heavier weight version of Standard Mesh with good workability.
- **Medium Mesh**–Extra tough heavy weight mesh. Best for areas of light traffic.
- **Strong Mesh**–Great high traffic mesh where impacts are a consideration.
- **Ultra Mesh**–Best where abuse is expected. Ultra heavy for high traffic areas.
 - **Strong Mesh and Ultra Mesh** must be used in a two-layer system.
- **Corner Roll**– For highly impact resistant corners. Apply under Standard or higher mesh.

MESH WEIGHT AND COVERAGE

	Mesh Weight	Roll Size	Coverage*
Detail	4.5 oz/sy (113 g/sm)	9.5" x 150' (96.5cm x 45.7m)	119 sf (11 sm)
Standard - 38	4.6 oz/sy (156 g/sm)	38" x 150' (96.5cm x 45.7m)	475 sf (44.1 sm)
Standard - 48	4.6 oz/sy (156 g/sm)	48" x 150' (122 cm x 45.7m)	600 sf (55.7 sm)
Hi-Tech	6.0 oz/sy (202 g/sm)	48" x 150' (122cm x 45.7m)	600 sf (55.7sm)
Medium	11.0 oz/sy (370 g/sm)	38" x 75' (96.5cm x 22.8m)	238 sf (22.1 sm)
Strong	15.4 oz/sy (508 g/sm)	38" x 75' (96.5cm x 22.8m)	238 sf (22.1 sm)
Ultra	21.0 oz/sy (700 g/sm)	48" x 75' (122cm x 22.8m)	300 sf (22.1 sm)
Corner Roll	9.5 oz/sy (238 g/sm)	9.5" x 150' (96.5cm x 45.7m)	150 lf (45.7 m)

*Allow about 10% waste for lapping all meshes (Strong, Ultra and Corner Roll Meshes are butted). Coverage will vary.

PRODUCT TEST STANDARDS

ASTM D76, ASTM D578, ASTM D579, ASTM D1777, ASTM D3659, ASTM D3775, ASTM D3776, ASTM D4029, ASTM D5035, ASTM E2098, ASTM E2486. MIL-Y-1140

Weave: Full Leno

Impact ASTM E2486 (Formerly EIMA 101.86)

ASTM D5035 Tensile (warp/fill)

Standard Mesh	Medium Impact Resistance 50-89 in-lbs (5.7-10.1J)	247/280
Hi Tech Mesh	Medium Impact Resistance 50-89 in-lbs (5.7-10.1J)	140/250
Medium Mesh	Medium Impact Resistance 50-89 in-lbs (5.7-10.1J)	300/500
Medium & Standard	High Impact Resistance 90-150 in-lbs (10.2-17.0J)	300/500
Strong & Standard	Ultra High Impact Resistance 150+ in-lbs (over17.0J)	350/600
Ultra & Standard	Ultra High Impact Resistance 150+ in-lbs (over17.0J)	750/500
Corner Roll		274/274

APPLICATION PROCEDURE

Job Conditions - Air and substrate temperature for embedment of the Reinforcing Mesh must be 40°F (5°C) or higher and must remain 40°F (5°C) or higher for a minimum of 24 hours. Provide temporary protection at all times until the wall system, including flashings, caps, and sealants, is completed to provide protection from climatic conditions and other potential damage.

Application - All imperfections in the insulation board must be rasped flush and any gaps in the insulation board must be filled with slivers of insulation. Apply the base coat over the entire surface of the insulation board in a thickness greater than that of the Reinforcing Mesh being used, approximately 1/16" (1.6 mm) for Standard Mesh and 3/32" (2.4 mm) for Ultra Mesh. Immediately embed the Aggre-flex Mesh into the wet base coat and smooth from the center to the edge to avoid wrinkles. Lap all meshes except Strong Mesh and Ultra Mesh a minimum of 2-1/2" (63.5 mm) on all sides. The reinforcing fabric must be continuous at all corners and lapped or abutted in accordance to Master Wall specifications. The color of the mesh shall not be visible but a slight mesh pattern may be visible. The overall minimum thickness of the base coat should be a nominal 1/16" (1.6 mm) when dry.

When applying Strong, Ultra or Corner Roll Mesh, tightly abut all edges and let cure for a minimum of 12 hours. Grind any imperfections with the edge of a stainless steel trowel or grinding stone, taking care not to damage the Aggre-flex Mesh, and apply a layer of Standard Mesh, Hi-Tech Mesh, or Medium Mesh as per the directions in the preceding paragraph. To minimize wall variations, the lap of the second mesh layer should not coincide with the abutment of the first layer.

Special Conditions and Recommendations

Apply wrapping, backwrapping mesh or other approved accessory at all terminations of the insulation board. This includes at the top and bottom of all walls and at all openings.

Aggre-flex Mesh may be wrapped from the face of the insulation board onto a foundation or onto the studs of an opening on barrier wall systems. In all cases, the exposed edges of the insulation board must be wrapped with Aggre-flex Mesh and base coat or an approved accessory trim.



Health & Safety

WARNING!

Causes eye and skin irritation.

Precautionary Statement

Wash hands thoroughly after handling. Wear protective gloves/protective clothing/eye protection/face protection.

Consult the Safety Data Sheet (SDS) in the Products section at masterwall.com for further health and safety information.

LIMITED WARRANTY

This product is subject to a written limited material or system warranty. Obtain a warranty from the Tech Support tab of our website. Refer to Specifications for more complete information on proper use and handling of this product.

Information contained in this product data sheet conforms to the standard detail recommendations and specifications for the installation of Master Wall Inc.® products and is presented in good faith. Master Wall Inc.® assumes no liability, expressed or implied as to the architecture, engineering, or workmanship of any project. This information may be concurrent with, or superseded by other applicable documents, such as specifications and details. Contact Master Wall Inc.® for the most current product information.

©2022 Master Wall Inc.®



Master Wall Inc.®
Building a Culture of Excellence

PRODUCT DATA

PRIMECOAT PRIMER

High quality exterior acrylic primer that helps solidify and protect the surface. Integrally colored Primecoat Primer helps make finishes brighter and deeper, reduces efflorescence and extends finish coverage rates. Suitable for priming Master Wall® base coats, new stucco, masonry and concrete that has a pH of 13 or less.

FEATURES & BENEFITS

- Tintable sealer/primer with good hiding power
- Hot prime capable for pH 13 or less
- Reduces finish absorption for improved aesthetics and reduced finish color variations
- Recommended for extreme color changes, under very dark, vivid or bright topcoats or when top tier finishing is specified
- Extends finish coverage, required when spraying Superior Finishes and some specialty finishes
- 100% Acrylic Polymers for durability
- Water-based - easy clean up with water

Application Temperature: 40°-110°F (5°-43°C)

Dry to touch: 1 hour

Recoat Time: 2 hours

Dry Time: 12 hours at room temperature, working and drying time will vary with temperature and humidity.

JOB CONDITIONS

Air and substrate temperature for application of Primecoat must be 40°F (5°C) or higher and must remain 40°F (5°C) or higher for a minimum of 24 hours. Provide temporary protection to protect the wall system from damage until permanent flashings, caps and sealants are installed. Store materials within prescribed temperature limits and out of direct sunlight. Working and drying times are based upon normal room temperature conditions and will vary with temperature and humidity.

PREPARATION

The substrate must be approved by Master Wall Inc.®, clean, dry, structurally sound and free of efflorescence, oil, grease, form release agents and curing compounds or anything that would affect bond. Concrete and masonry should be cured a minimum of 28 days, stucco cured a minimum of 7-14 days or surfaces verified to have a pH less than 13.

Coverage per pail (sf/sm)*

1000-1200 sf/pail (93-112 sm)*

**All coverage is approximate and depend upon substrate, details and individual application*

Packaging/Shelf Life/Storage

Packaging: 5 gallon (19L) pail Pail

Shelf Life: 2 years

Storage: Protect from extreme heat - 90°F (32°C), freezing and direct sunlight.

Technical Data

Water Vapor Transmission (perms), ASTM E96 Vapor Permeable

Substrate Recommendations

Concrete – If preparing for a textured or specialty finish, all projections must be removed and any voids filled with a Master Wall® base coat as needed to provide an appropriate surface.

Masonry – If preparing for a textured or specialty finish, skim coat with a Master Wall® base coat to achieve a smooth level surface. If joints are not struck flush, multiple coats may be required. Contact Master Wall for more information.

Stucco – If additives were used in the stucco, it is recommended that a test patch be made to evaluate bond strength of the Primecoat to the stucco.

Master Wall® Base Coats or Finishes, Previously Painted Surfaces, Cement Composition Siding

Install/Apply and prepare according to published guidelines. Surfaces should be clean, dry, cured and ready to receive coatings.

APPLICATION PROCEDURE

Mixing - Thoroughly stir Primecoat into a homogeneous consistency. Small amounts of clean, potable water may be added to obtain a workable consistency. Do not over mix. Do not exceed 24 ounces (0.7L) of water per pail. Do not add accelerators or retarders to Primecoat.

Application - Primecoat can be applied by brush, roller, or airless spray equipment. When using a roller, a maximum 3/4" (19 mm) nap is recommended. Apply Primecoat in an even, continuous coat of about 3 mils, maintaining a wet edge.

Airless Spray Application - Pressure 2000 p.s.i., Tip .015- to .019 inch. Spray in a consistent manner or backroll after spraying for a consistent application.

Limitations - Primecoat is not intended for use as the final finish coat over Master Wall base coats or other approved substrates.

FOR PROFESSIONAL RESULTS

Apply coatings away from direct sunlight. Cold joints or color variations can occur if the finish dries too quickly. Under certain conditions dark colors may show efflorescence on the surface during the cure process.

Surfaces exposed to the weather must be sloped (6:12 minimum). Use of dark colors in high temperature climates can affect the performance of the system, especially EIFS and areas may need to be limited.

CLEAN UP

Tools and equipment can be cleaned with soapy water when Primecoat is wet.

Hazard: This chemical is not considered hazardous according to the OSHA Hazard Communication Standard 2012 (29 CFR 1910.1200).

VOC: Less than 50 g/L.

Approved Substrates

Master Wall® Base Coats
Stucco
Brick
Masonry
Concrete
Interior Drywall
Previously painted surfaces with bond test
Others approved in writing

Warning: KEEP CONTAINER CLOSED WHEN NOT IN USE. KEEP OUT OF THE REACH OF CHILDREN. NOT FOR INTERNAL CONSUMPTION. FOR INDUSTRIAL USE ONLY.

Consult the Safety Data Sheet (SDS) in the Products section at masterwall.com for further health and safety information.

LIMITED WARRANTY

This product is subject to a written limited material or system warranty. Obtain a warranty from the Tech Support tab of our website. Refer to Specifications for more complete information on proper use and handling of this product.

Information contained in this product data sheet conforms to the standard detail recommendations and specifications for the installation of Master Wall Inc.® products and is presented in good faith. Master Wall Inc.® assumes no liability, expressed or implied as to the architecture, engineering, or workmanship of any project. This information may be concurrent with, or superseded by other applicable documents, such as specifications and details. Contact Master Wall Inc.® for the most current product information. ©2022 Master Wall Inc.®



Master Wall Inc.®
Building a Culture of Excellence

PRODUCT DATA

SUPERIOR ELASTOMERIC PLUS FINISHES

To finish strong you need a Superior Elastomeric Finish that can bridge minor hairline cracks common in stucco. Master Wall® Superior Elastomeric Plus finishes have one of the highest 100% acrylic polymer contents in our industry for extra flexibility yet are still breathable.

FEATURES & BENEFITS

- 100% Acrylic Polymers for durability
- Dirt Pickup Resistant (DPR) Polymer Formulation
- Quartz or Marble aggregate available
- 64 Standard Colors
- Custom color matching available
- DuroTone colorfast pigments, Excel mildew enhancement, Silicone Coat additive available
- Vapor Permeable - resists blistering and allows trapped water vapors to pass
- Low VOC—Suitable for Interior Use
- Water Based - easy clean up with water

Application Temperature: 40°-110°F (5°-43°C)

Working Time: 1/4 hr

Set Time: 8-12 hrs

Dry Time: 48-72 hrs at room temperature, working and drying time will vary with temperature and humidity.

JOB CONDITIONS

Air and substrate temperature for application of Superior Elastomeric Plus Finishes must be 40°F (5°C) or higher and must remain 40°F (5°C) or higher for a minimum of 24 hours. Provide temporary protection to protect the wall system from damage until permanent flashings, caps and sealants are installed. Store materials within prescribed temperature limits and out of direct sunlight. High temperatures will reduce working times, Low temperatures and/or high humidity and pigment loading will extend working, set and dry times.

PREPARATION

The substrate must be approved by Master Wall Inc.®, clean, dry, structurally sound and free of efflorescence, oil, grease, form release agents and curing compounds or anything that would affect bond. Painted surfaces are not acceptable and must be removed. Concrete and surfaces should cure for a minimum of 28 days. Stucco should be cured until clean, dry and hard—typically 14 days with a pH of 10 or less (13 or less if Primecoat Primer is used).

Interior drywall should be finished and made ready for paint. Prime surfaces with Primecoat/Sanded Primecoat primer prior to finishing.

Coverage per pail (sf/sm)*

- Perfect Swirl 2.0, 120-150 (11-14)
- Fine Sand 1.0, 160-170 (15-15.8)
- Medium Sand 1.5, 130-150 (12-14)
- Versatex 0.5, Varies with Texture

**All coverage is approximate and depend upon substrate, details and individual application*

Packaging/Shelf Life/Storage Packaging:

- 5 gallon (19L) pail Pail

Shelf Life: 2 years

Storage: Protect from extreme heat (90°F, 32°C), freezing and direct sunlight.

Technical Data

Water Vapor Transmission: >10 perms

Elongation: 307% (Neat Film)

Tensile Bond @ Break: 84 psi (Neat Film)

Mildew Resistance, ASTM D3273: Pass

Solids by Weight: 59.5 (Neat Film)

Solids by Volume: 45.4 (Neat Film)

ASTM B117 Salt Spray Resistance - Pass ASTM

C67 Freeze/Thaw - Pass

ASTM D968 Abrasion Resistance - Pass 500L

ASTM D3273 Mildew Resistance - Pass 28 Days

ASTM E84 Surface Burning - Pass, FS=0, SD=0

ASTM G23/G154/G155 Accelerated Weathering

- Pass 2000 Hours

ASTM G53 Accelerated Weathering - Pass 2000

Hours

APPLICATION PROCEDURE

Base Coats - Must be flat, dry hard, and free of efflorescence. Master Wall® base coats must cure a minimum of 12 hours before application of Superior Elastomeric Plus Finish. Substrates of brick, masonry or concrete should be leveled smooth using either Master Wall® base coats or stucco.

Mixing - Thoroughly stir Superior Elastomeric Plus Finish using a heavy duty 1/2" drill at 400 - 500 rpm and a heavy duty mixing paddle. Small amounts of clean, potable water may be added to obtain a workable consistency. To avoid color variations, add the same amount of water to each pail. Do not exceed 24 ounces (0.7L) of water per pail of finish.

Application - Apply a uniform thickness (about 1/16", 1.6 mm) of Superior Elastomeric Plus Finish to the substrate using a stainless steel trowel. Spread evenly and then scrape the finish coat down to a thickness no greater than the largest aggregate in the material. Immediately float the finish coat using a plastic float to the desired texture. Always maintain a wet edge to achieve uniformity of texture and color. Allow the finish to fully dry and set before exposure to inclement weather.

FOR PROFESSIONAL RESULTS

Apply finish coats away from direct sunlight. Cold joints or color variations can occur if the finish dries too quickly. Priming stucco surfaces with Primecoat/Sanded Primecoat evens out finish absorption and should be strongly considered and specified for dark colored finishes, especially those using Ultra Deep Base (UDB) tint base and over stucco to avoid efflorescence blush. Under certain conditions dark colors may show efflorescence on the surface during the cure process.

Surfaces exposed to the weather must be sloped (6:12 minimum). Use of dark colors in high temperature climates can affect the performance of the system, especially EIFS and areas may need to be limited.

Deep, intense colors should be specified with DuroTone pigments to maintain colorfastness longer. Verify specialty colors with your Master Wall® Distributor. Finishes are intended for the approved substrates listed above and should not be applied directly to gypsum board or insulation board products.

CLEAN UP

Tools and equipment can be cleaned with soapy water while the Superior Elastomeric Plus Finish is still wet.

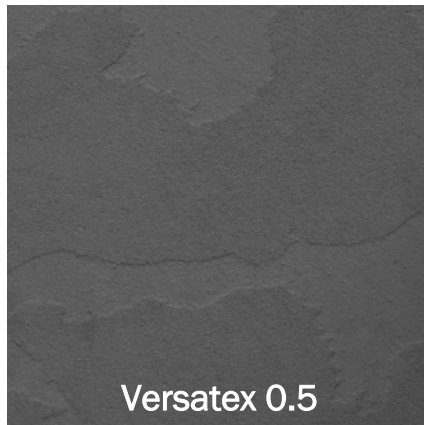
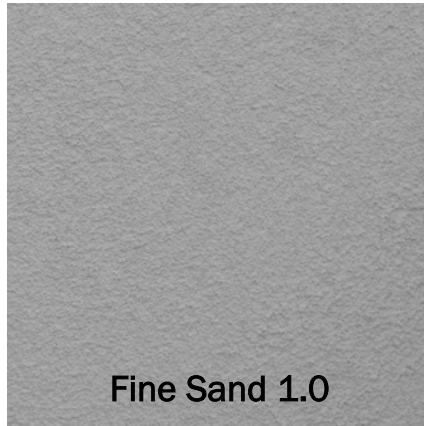
Hazard: This chemical is not considered hazardous according to the OSHA Hazard Communication Standard 2012 (29 CFR 1910.1200).

VOC: Less than 50 g/L.

Approved Substrates

Master Wall® Base Coats
Cemplaster Fiberstucco, One Coat Stucco (OCS), Primecoat Primer surfaces, ASTM C926 Stucco

Prepared & Base Coated Surfaces of:
Brick, Concrete, Masonry
Others approved in writing



Information contained in this product data sheet conforms to the standard detail recommendations and specifications for the installation of Master Wall Inc.® products and is presented in good faith. Master Wall Inc.® assumes no liability, expressed or implied as to the architecture, engineering, or workmanship of any project. This information may be concurrent with, or superseded by other applicable documents, such as specifications and details. Contact Master Wall Inc.® for the most current product information. ©2022 Master Wall Inc.®



Health & Safety

WARNING!

Causes eye and skin irritation. Precautionary Statement Wash hands thoroughly after handling. Wear protective gloves/protective clothing/eye protection/face protection.

FIRST AID MEASURES

Eye Contact: Immediately flush eyes with plenty of water for at least 15 to 20 minutes. Ensure adequate flushing of the eyes by separating the eyelids with fingers. Get immediate medical attention.

Skin Contact: Immediately wash skin with plenty of soap and water for 15 to 20 minutes, while removing contaminated clothing and shoes. Get medical attention if irritation develops or persists.

Inhalation: If inhaled, remove to fresh air. If not breathing, give artificial respiration or give oxygen by trained personnel. Seek immediate medical attention.

Ingestion: If swallowed, do NOT induce vomiting. Call a physician or poison control center immediately. Never give anything by mouth to an unconscious person.

Store locked up. Dispose of contents/container in accordance with Local, State, Federal and Provincial regulation.

Spills: Collect with suitable absorbent material such as cotton rags.

Disposal: Dispose of in accordance with local, state or federal regulations.

Warning: KEEP CONTAINER CLOSED WHEN NOT IN USE. KEEP OUT OF THE REACH OF CHILDREN. NOT FOR INTERNAL CONSUMPTION. FOR INDUSTRIAL USE ONLY.

Consult the Safety Data Sheet (SDS) in the Products section at masterwall.com for further health and safety information.

LIMITED WARRANTY

This product is subject to a written limited material or system warranty. Obtain a warranty from the Tech Support tab of our website. Refer to Specifications for more complete information on proper use and handling of this product.