

# Project Submittal Package

Project:

Location:

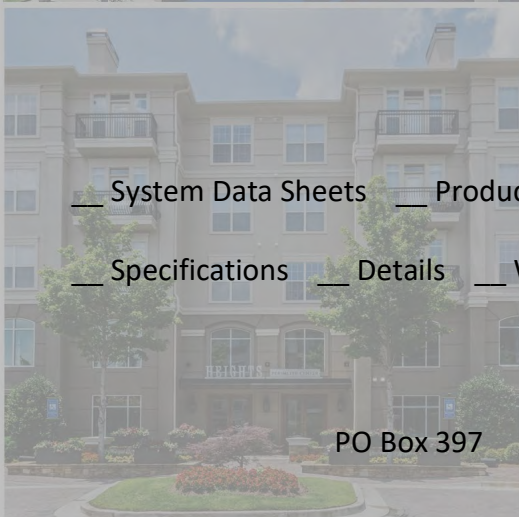
Architect:

General Contractor:

Applicator:



## Master Wall Inc.®



[System Data Sheets](#)   [Product Data Sheets](#)   [Sample Warranty](#)

[Specifications](#)   [Details](#)   [Web Link \(click here\)](#)

PO Box 397

Fortson

GA

31808

800-755-0825

[masterwall.com](http://masterwall.com)



**Master Wall Inc.**  
Building a Culture of Excellence

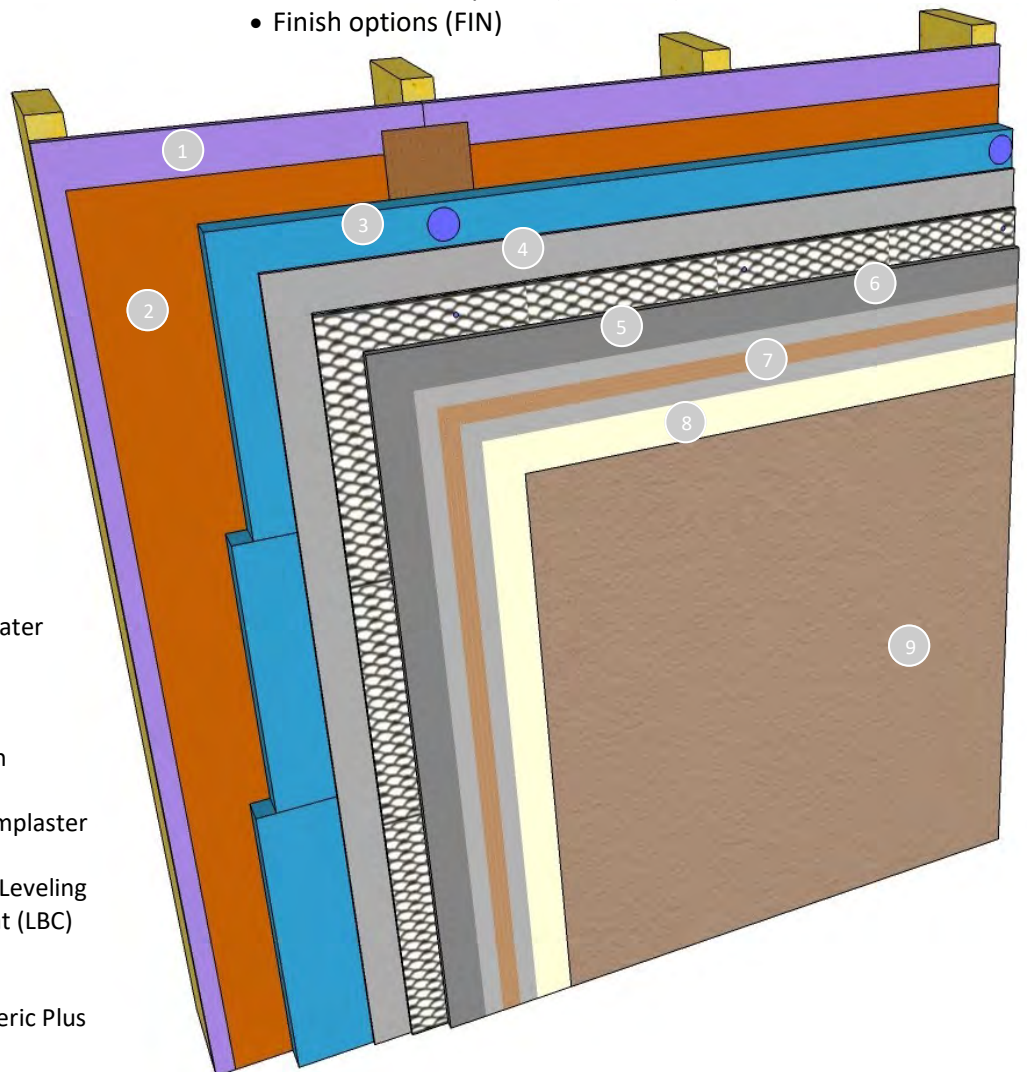
09 24 00/09 25 00

## CEMPLASTER FIBERSTUCCO SYSTEM

Master Wall® Cemplaster Fiberstucco System is an engineered, fiber-reinforced stucco using our Cemplaster Fiberstucco or Cobrand stucco products in an easy to use packaged assembly. Available in concentrate and ready versions, it offers improved durability compared to traditional stucco with easier application, better product consistency and technical support throughout the application process. Cemplaster Fiberstucco is available as a basic system (stucco & finish) or it can be upgraded with additives, rainscreen mats, continuous insulation leveling base coats and finishes.

### Features & Benefits

- Premium fibered stucco system with a warranty
- Variable warranty options: choose popular additions to customize your system or let us design one for you
- Up to 20-year limited labor/material warranties available
- Options
  - Water barriers (WRB)
  - Continuous Insulation (CI)
  - Drainage options (DRS)
  - Cemplaster Fiberstucco options from 3/8" to 7/8" thick (CFS)
  - Reinforcement options (SRM, LBC)
  - Finish options (FIN)



1. Framing & Sheathing (by others)
2. SuperiorShield Rollershield Air/Water Barrier or other approved WRB
3. Continuous Insulation (CI) option
4. Drainage Spacer (DRS) option
5. Cemplaster Fiberstucco (CFS) with reinforcement
6. Stucco Additive (SA) option in Cemplaster mix option
7. Surface Reinforcing Mesh (SRM), Leveling Base Coat or Reinforced Base Coat (LBC) option
8. Primecoat Primer (PRIME) option
9. Superior Finish, Superior Elastomeric Plus or Specialty Finish (FIN) options

## Choose your system and your warranty, or let us custom design one for you

When you improve your stucco you improve your warranty. Choose the options you want for your project, or give us a call and we will custom design a system for you. Warranties add up and the extensions in years are noted in **orange**.

### Weather Resistive Barriers (WRB), Continuous Insulation (CI) and Drainage Spacers (DRS)

- WRB01** 2- ASTM D226 Asphalt Felt or other code required minimum (minimum over sheathing) **(0 Years)**
- WRB02** Tyvek® StuccoWrap® or similar with 1-layer of ASTM D226 Asphalt Felt (over sheathing) **(0 Years)**
- WRB03** Master Wall Rollershield with 1-layer of ASTM D226 Asphalt Felt (over sheathing) **(+5 Years)**
- WRB04** Master Wall Rollershield (over concrete or masonry, slip sheet and lath required) **(+5 Years)**
- CI01-03** Continuous Insulation: Expanded, Extruded, Polyisocyanurate, Mineral Wool **(0 Years)**
- CI04** External Insulation **(0 Years)**
- DRS00** No Drainage Spacer **(0 Years)**
- DRS01** Drainage Mat: Spacer Type **(0 Years)**
- DRS02** Rainscreen: Cosella-Dörken Products, Inc. Delta® -Dry, Delta® -Dry Plus or Keene Driwall™ Rainscreen 020-1 **(+1Year)**

### Cemplaster Fiberstucco Warranty Program Products (CFS)

- CFS01** Master Wall Cemplaster Fiberstucco\* with 17 or 20 ga. woven wire fabric or STRUCTALATH III reinforcement, 3/8" thick **(+2 Years)**
  - CFS02** Master Wall Cemplaster Fiberstucco\* direct to Masonry/Concrete (no Rollershield), 3/8"-1/2" thick **(+3 Years)**
  - CFS03** Master Wall Cemplaster Fiberstucco\* with 2.5#/sy self-furring, MW Fibalath™ or STRUCTA Twin Trac reinforcement, 1/2" thick **(+3 Years)**
  - CFS04** Master Wall Cemplaster Fiberstucco\* with 3.4#/sy self-furring, MW Fibalath™ or STRUCTA Mega Lath reinforcement, 3/4" thick **(+4 Years)**
  - CFS05** Master Wall Cemplaster Fiberstucco\* with 3.4#/sy self-furring reinforcement, 7/8" thick **(+4 years)**
- \*Cemplaster Fiberstucco available with certain QUIKRETE® and WESTERN Blended products as part of our warranty program.*

### Stucco Additives (SA)

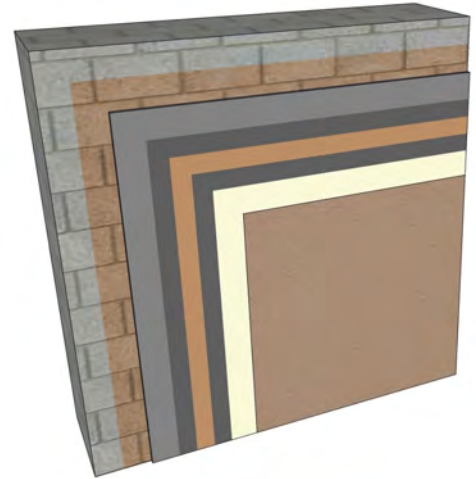
- SA00** No Stucco Additives **(0 Years)**
- SA01** Master Wall Stucco Ad Liquid, 3 qt per mix of CFS Concentrate, 1 qt per bag of Ready CFS **(+1 Year)**
- SA02** Master Wall Stucco Ad Liquid, 2 gal per mix of CFS Concentrate, 3 quarts per bag of Ready CFS **(+2 Years)**
- SA03** Master Wall Stucco Ad Liquid, 5 gal per mix of CFS Concentrate, 1-1/2 gal per bag of Ready CFS **(+3 Years)**

### Surface Reinforcing Mesh (SRM) & Leveling Base Coats (LBC)

- SRM00** No Surface Reinforcing Mesh **(0 Years)**
- SRM01** Bulltec Reinforcing Mesh embedded into wet stucco brown coat **(+1 Year)**
- LBC00** No Leveling Base Coat **(0 Years)**
- LBC01** F&M, F&M Plus, MBB, MBB Plus, Guardian or WeatherSTOP Skim Coat **(+1 Year)**
- LBC02** F&M, F&M Plus, MBB, MBB Plus, Guardian or WeatherSTOP Skim Coat with Master Wall Standard Reinforcing or Bulltec Mesh **(+2 Years)**

### Primers (PRIME), Finish Additives (FA), Finish Options (FIN)

- PRIME00** No Primer **(0 Years)**
- PRIME01** Primecoat or Sanded Primecoat tinted primer **(+1 Year)**
- FIN01** Superior Finish/Specialty Finish **(+1 Year)**
- FA01** Excel Additive (to any finish) **(+0.5 Year)**
- FA02** Silicone Coat (to any finish) **(+0.5 Year)**
- FIN02** Superior Elastomeric Plus Finish **(+3 Years)**



Direct application of Cemplaster Fiberstucco to CMU using BA57 bonding agent, reinforced WeatherSTOP waterproof base coat, Primecoat and Superior Finish

## Cemplaster Stucco

### Sample Labor & Material Limited Warranty

Master Wall Inc.® warrants the properly designed and installed Cemplaster Stucco System and materials for terms noted above from the date of installation. Master Wall Inc.'s exclusive liability under this warranty is to supply replacement materials and labor or corrective procedures, if it is shown that the materials supplied by Master Wall Inc., were defective when installed by the Master Wall Inc. certified applicator. Remedies shall be solely determined by Master Wall Inc. and no other warranties are expressed or implied. For a valid warranty, the system and products must be installed in accordance with Master Wall Inc.'s written recommendations, specifications, details, bulletins and other project-specific written recommendations. Master Wall Inc. must be notified in writing within 10 business days of the original discovery of the defect.

Master Wall Inc., is not responsible for structural conditions, design conditions beyond those noted in our literature, architecture, engineering or workmanship of any project. Cemplaster Stucco may have hairline cracks, spalling, fastener popping or efflorescence, which are not considered product defects. Materials must be properly stored and applied in a timely manner. Workmanship, aesthetics and installation are beyond the scope of this warranty as are any deviations from Master Wall Inc. Documents not specifically approved in writing.

Abuse, misuse, excessive weather or environmental conditions beyond what the products or systems have been tested, designed or approved for is expressly limited. Certain colors with organic pigments are less fade-resistant than others. The building, system and products must be properly maintained in accordance with Master Wall Inc., documents, local environmental conditions and good building practices. In no case is Master Wall Inc. responsible for incidental and consequential damages.

This warranty becomes effective only when all bills for the components of the system have been paid.

Except as stated, Master Wall, Inc., expressly disclaims any warranty of merchantability or fitness for a particular purpose. The above remedies are to be deemed exclusive.

***This is a sample of the warranty and is not the final warranty. A final warranty must be requested to be valid.***

#### **Compliance Standards**

UES Evaluation Report 384, Rollershield Water Barrier, Evaluation Report CCRR-0215, Master Wall Cemplaster Fiberstucco, Evaluation Report ER-0821, Cemplaster Fiberstucco L, QUIKRETE® Stucco Cobrand in Warranty Program, ER-0455, Western Blended Stucco Cobrand in Warranty Program, ER-0821, ASTM C67, ASTM C109, ASTM E330, ASTM G26, ASTM E84, ASTM E119, ASTM E136, NFPA 285

Information contained in this product data sheet conforms to the standard detail recommendations and specifications for the installation of Master Wall Inc.® products and is presented in good faith. Master Wall Inc.® assumes no liability, expressed or implied as to the architecture, engineering, or workmanship of any project. This information may be concurrent with, or superseded by other applicable documents, such as specifications and details. Contact Master Wall Inc.® for the most current product information. ©2022 Master Wall Inc.®



# PRODUCT AND SYSTEM TESTING



**Master Wall Inc.**  
Building a Culture of Excellence



## MASTER WALL® SYSTEMS SPECIFICATION FACT SHEET

- Manufacturer of EIFS, Stucco and Coatings since 1987
- Committed and focused specifically on our industry; privately held and American owned.
- Pioneer in CIFS® (Continuous Insulation and Finish Systems)
- Leader in specialty finishes; CIFS® Wood Grain, CIFS® Brick, Hydrophobic Finishes, Metallics, SuperiorCote coatings
- AWCI Certified EIFS Professional (CEP) accredited Sales and Technical Force
- AIA MasterSpec listed, AIA CES Registered Provider
- Industry Leadership
  - EIMA (EIFS Industry Members Association) – Manufacturer Member and Current President
  - NOCSA (National One Coat Stucco Association) – Manufacturer Member and Current President
  - SMA (Stucco Manufacturer's Association) – Manufacturer Member and Board Member
  - ABAA (Air Barrier Association of America) – Manufacturer Member
  - AWCI (Association of the Wall and Ceiling Industry) – Member
  - FWCCA (Florida Wall & Ceiling Contractors Association) – Member
- Code Compliant EIFS, CIFS® Stucco and Air Barrier Systems (ICC, Miami Dade and Florida Building Code recognized systems)
- Full-service product support including sales and technical aspects of your project
- Labor and Material Limited Warranties exceeding other manufacturers ranging up to 20 years including Single-source envelope warranties with approved Sealant manufacturers.
- DuroTone High Performance Tint Pigments for Improved Color Retention (5-year fade warranty)
- Manufacturing strategically located in Stonecrest GA, Brookshire TX and Payson UT
- Nationwide distributor network that serves most major markets



**Master Wall Inc. continuously tests our products and systems to meet the most current building codes.**

<b>FIRE TESTING</b>			
<b>Test</b>	<b>Test Method</b>	<b>Criteria</b>	<b>Results</b>
Fire Resistance	ASTM E119	No effect on the fire resistance of a rated wall assembly	See Technical Bulletin MW#168-030111 for assemblies
Ignitability	NFPA 268 (BOCA 99/1407.0)	No ignition at 12.5 kw/m <sup>2</sup> at 20 minutes	Pass
Intermediate Multi-Story Fire Test	NFPA 285 (UBC 26-9)	<ol style="list-style-type: none"> <li>1. Resist flame propagation over the exterior surface</li> <li>2. Resist vertical spread of flame within combustible core/component of panel from one story to the next</li> <li>3. Resist vertical spread of flame over the interior surface from one story to the next</li> <li>4. Resist lateral spread of flame from the compartment of fire origin to adjacent spaces</li> </ol>	Pass
Surface Burning Characteristics— Base Coat, Mesh and Finish	ASTM E84	All components shall have a: Flame Spread < 25 Smoke Developed < 450	Flame Spread = 0 Smoke Developed = 0
Surface Burning Characteristics— Rollershield	ASTM E84	All components shall have a: Flame Spread < 25 Smoke Developed < 450	Flame Spread = 5 Smoke Developed = 5
Heat and Smoke Release Rates for Rollershield Air/ Water Barrier	ASTM E1354, IBC Section 1403.5, Exception 2 Requirements	Peak Heat Release Rate <150 kWm <sup>2</sup> Total Heat Release Rate <20 MJ/m <sup>2</sup> , Effective Heat of Combustion <18 MJ/kg	RS: Peak Heat Release Rate = 32 kWm <sup>2</sup> , Total Heat Release Rate = 3.6 MJ/m <sup>2</sup> , Effective Heat of Combustion = 2.5 MJ/kg, VB: Peak Heat Release Rate = 336 kWm <sup>2</sup> , Total Heat Release Rate = 8.8 MJ/m <sup>2</sup> , Effective Heat of Combustion = 9.3 MJ/kg

<b>MESHES AND INSULATION BOARD</b>			
<b>Test</b>	<b>Test Method</b>	<b>Criteria</b>	<b>Results</b>
Reinforcing Mesh Alkali Resistance of Reinforcing Mesh	ASTM E2098 (formerly EIMA 105.01)	>21dN/cm (120 pli) retained tensile strength after exposure	Pass
EPS (Physical Properties)			
Density	ASTM C303, D1622	15.2-20.0 kg/m <sup>3</sup> (0.95-1.25 lb/ft <sup>3</sup> )	Pass
Thermal Resistance	ASTM C177, C518	4.0 @ 4.4 °C (40 °F)	Pass
Water Absorption	ASTM C272	3.6 @ 23.9 °C (75 °F)	
Oxygen Index	ASTM D2863	2.5 % max. by volume	Pass
Compressive Strength	ASTM D1621 Proc. A	24% min. by volume	Pass
Flexural Strength	ASTM C203	69 kPa (10 psi) min.	Pass
Flame Spread	ASTM E84	172 kPa (25 psi) min.	Pass
Smoke Developed		25 max. 450 max.	Pass Pass



## EIFS & COATING

Test	Test Method	Criteria	Results
Abrasion Resistance	ASTM D968	No deleterious effects after 500 liters (528 quarts)	Pass
Accelerated Weathering	ASTM G155 Cycle 1	No deleterious effects after 2000 hours	Pass
Accelerated Weathering	ASTM G23 (G152 & 153)	No deleterious effects after 2000 hours	Pass
Accelerated Weathering	ASTM G53	No deleterious effects after 2000 hours (QUV)	Pass
Freeze-Thaw	ASTM E2485 (formerly EIMA 101.01)	No deleterious effects after 60 cycles	Pass
Freeze-Thaw	ASTM C67 modified/ICBO AC24	No deleterious effects after 10 cycles	Pass
Freeze-Thaw	ASTM E2485/ICC-ES Proc. ICC ES (AC 235)***	No deleterious effects after 10 cycles	Pass
Mildew Resistance	ASTM D3273	No growth during 28 day exposure period	Pass
Water Resistance	ASTM D2247	No deleterious effects after 14 days exposure	Pass
Impact	ASTM D5420	Gardner Impact Falling Weight	Pass
Salt Spray Resistance	ASTM B 117	No deleterious effects after 300 hours exposure	Pass
Water Penetration	ASTM E331 ICC ES (AC 235)***	No water penetration beyond the inner-most plane of the wall after 15 minutes at 137 Pa (2.86 psf)	Pass at 2.86 psf (137 Pa), 6.24 psf (299 Pa), and 12.0 psf (575 Pa) consecutively
Water Vapor Transmission	ASTM E 96 Water Method	Vapor permeable perm (ng/Pa.s.m <sup>2</sup> )	EPS 5 perm-inch (114) Base Coat* 12 (679) Finish** 12 (674)
Component-Specific Weather Protection	IBC 1403	2-hour water test of EIFS and specific components	Pass
Drainage Efficiency	ASTM E 2273 ICC ES (AC 235)***	Minimum Drainage Efficiency of 90%	Aggre-flex Drainage 97.8% Rollershield Drainage 99.2% QRW1 Drainage 97.8%
* Base Coat perm value based on Master Wall F&M ** Finish perm value based on Master Wall Perfect Texture *** AC 235 (ASTM E 2568) – Acceptance Criteria for EIFS Clad Drainage Wall Assemblies			
Tensile Bond	ASTM C297/E2134	Minimum 15 psi (104 kPa) – substrate or insulation failure	Plywood/EPSA 67 psi (464) OSB/ EPSA 22 psi (152) Brick/F&M 105 psi (728) Concrete/F&M 94 psi (651) Gypsum/F&M 30 psi (208)
Tensile Bond	ASTM D897	Bond strength before and after 2000 hours florescent UV condensation weathering.	Before 24.6 psi After 22.7 psi
Transverse Wind Load	ASTM E330	Withstand positive and negative wind loads as specified by the building code	Pass. Assemblies vary from 68-287 psf*
* Ultimate wind loads – contact Master Wall for specific assemblies.			



## IMPACT RESISTANCE (ASTM E2486/EIMA 101.86)

Description	OZ/SY	IN-LB Results	Joules	EIMA Classification
Standard Mesh	4.5	50-89	6-10	Medium
Hi-Tech Mesh	6.0	50-89	6-10	Medium
Medium Mesh	10.4	50-89	10-17	Medium
Medium & Standard Mesh	10.4 & 4.5	90-150	10-17	High Impact
Strong & Standard Mesh	15.0 & 4.5	Over 150	>17	Ultra High Impact
Ultra & Standard Mesh	21.0 & 4.5	Over 150	>17	Ultra High Impact

## CEMPLASTER FIBERSTUCCO

Test	Test Method	Criteria	Results
Finishes & Coatings	Varies		Reference EIFS & Coatings Data
Freeze-Thaw	ICC AC11	No deleterious effects after 10 cycles	Pass
Transverse Load	ICC AC11/ASTM E330	Withstand positive and negative wind loads as specified by the building code	Pass. Assemblies vary from 81-124 psf*
Compressive Strength	ASTM C109	Average load for cured sample	1910 psi
Fire Resistance	ASTM E119	No effect on the fire resistance of a rated wall assembly	See Technical Bulletin MW#168-030111 for assemblies
Combustibility	ASTM E136	Standard Test Method for Assessing Combustibility of Materials in a Vertical Tube Furnace at 750°C, Option A	Pass
Accelerated Weathering	ASTM G26/G155	No deleterious effects after 2000 hours	Pass

\* Ultimate wind loads – contact Master Wall for specific assemblies.



## ROLLERSHIELD LAB (LIQUID APPLIED AIR/WATER BARRIER)

Test	Test Method	Criteria	Results
Solids Content	Calculation		Rollershield RS – 69.52% solids by weight (55.05% by volume), Rollershield TG – 73.85% solids by weight (60.12% by volume), Rollershield VB – 68.19% solids by weight (52.97% by volume)
Tensile Bond	ASTM C297/E2134 ICC ES (AC 212)*	Minimum 15 psi (104 kPa)	Dens Glass Gold 31 (215), Exterior Gypsum 28 (194), OSB 40 (277), Plywood 79 (563), Cement Board 70 (485), Copper 185 (1282), Galvanized steel 180 (1248), PVC 168 (1165), Aluminum 184 (1275), Coated Aluminum 203 (1407), Stainless Steel 183 (1269)
Freeze-thaw	ASTM E2485/ICC-ES Proc. ICC ES (AC 212)*	No deleterious effects after 10 cycles	Pass: Plywood, Cement Board, OSB, Exterior Gypsum (ASTM C79/C1396) and Dens Glass Gold (ASTM C1377) substrates
Water Resistance	ASTM D2247 ICC ES (AC 212)*	No deleterious effects after 14 days exposure <sup>1</sup>	Pass: Plywood Cement Board, OSB, Exterior Gypsum (ASTM C79/C1396) and Dens Glass Gold (ASTM C1377) substrates
Water Vapor Transmission	ASTM E96 Proc. B ICC ES (AC 212)*	Vapor Permeable	30 perms (Rollershield RS) <sup>2</sup> 12 perms (Rollershield TG) 0.07 perms desiccant (A), 1.35 perms water (B)(Rollershield VB)
Air Permeance	ASTM E2178	No ICC or ANSI/EIMA Criteria ASHRAE/IECC max. 0.004 cfm/ft <sup>2</sup> @ 1.57 psf	0.001 cfm/ft <sup>2</sup> @ 1.57 psf 0.001 L/s/m <sup>2</sup> @ 75 Pa
Air Leakage	ASTM E2357	No ICC or ANSI/EIMA Criteria ASHRAE/IECC max. 0.04 cfm/ft <sup>2</sup> @ 1.57 psf	0.0006 cfm/ft <sup>2</sup> @ 1.57 psf, 0.003 L/s/m <sup>2</sup> @ 75 Pa 0.04 cfm/ft <sup>2</sup> @ 6.24 psf, 0.02 L/s/m <sup>2</sup> @ 300 Pa
Structural Performance	ASTM E1233 Proc. A ICC ES (AC 212)*	Minimum 10 positive cycles at 1/240 deflection; No cracking in field, at joints or interface with flashing	Pass
Racking	ASTM E72 ICC ES (AC 212)*	No cracking in field, at joints or interface with flashing at net deflection of 3.2 mm (1/8 inch)	Pass
Restrained Environmental	ICC-ES Procedure ICC ES (AC 212)*	5 cycles; No cracking in field, at joints or interface with flashing	Pass
Water Penetration	ASTM E331 ICC ES (AC 212)*	No water penetration beyond the inner-most plane of the wall after 15 minutes at 137 Pa (2.86 psf)	Pass
UV Exposure	ICC ES Proc. ICC ES (AC 212)*	210 hours of exposure, rated for 6 months of exposure	Pass
Accelerated Aging	ICC ES Proc. ICC ES (AC 212)*	25 cycles of wetting and drying	Pass
Hydrostatic Pressure Test	AATCC 127 ICC ES (AC 212)*	ICC: 549 mm (21.6 in) water column for 5 hours	Pass
Surface Burning Characteristics	ASTM E84	Flame Spread < 25 Smoke Developed < 450	Pass
Intermediate Multi-Story Fire Test	NFPA 285 (UBC 26-9)	No flame spread with up to 4" insulation	Pass
Nail Sealability	ASTM D1970	Standard Specification for Self-Adhering Polymer Modified Bituminous Sheet Materials Used as Steep Roofing Underlayment for Ice Dam Protection	Pass (22 mils)
Heat and Smoke Release Rates	ASTM E1354, IBC Section 1403.5, Exception 2 Requirements	Peak Heat Release Rate <150 kW/m <sup>2</sup> , Total Heat Release Rate <20 MJ/m <sup>2</sup> , Effective Heat of Combustion <18 MJ/kg	RS: Peak Heat Release Rate = 32 kW/m <sup>2</sup> , Total Heat Release Rate = 3.6 MJ/m <sup>2</sup> , Effective Heat of Combustion = 2.5 MJ/kg, VB: Peak Heat Release Rate = 336 kW/m <sup>2</sup> , Total Heat Release Rate = 8.8 MJ/m <sup>2</sup> , Effective Heat of Combustion = 9.3 MJ/kg

\* (AC212 – Acceptance Criteria for Water-Resistive Coatings Used as Water-Resistive Barriers over Exterior Sheathing, also referred to as ASTM E 2570

1. No cracking, checking, rusting, crazing, erosion, blistering, peeling, or delamination when viewed under 5x magnification

2. Defined as a Class III vapor retarder per the 2015 IBC and IRC





# Rollershield LAB

07 27 00

Liquid Applied Air/Water Barrier

## 100%

When it comes to keeping your building dry you want 100% protection, and can't settle for less. Sheet water barriers have laps, gaps and are secured with fasteners...holes. At windows and doors peel and stick flashings don't seal properly or lose bond over time.

The Rollershield LAB Air/Water Barrier System is a fluid applied secondary water barrier and flashing that offers 100% coverage with no laps, breaks or holes. It seals the substrate and protects the building.

## Let me Breathe!

Like people, buildings breathe and are continuously passing water vapors around depending upon interior and exterior conditions. While Rollershield is an excellent water barrier, it's also highly breathable (30 perms). This means that building moisture can pass easily and eliminates the problems posed by vapor barriers.

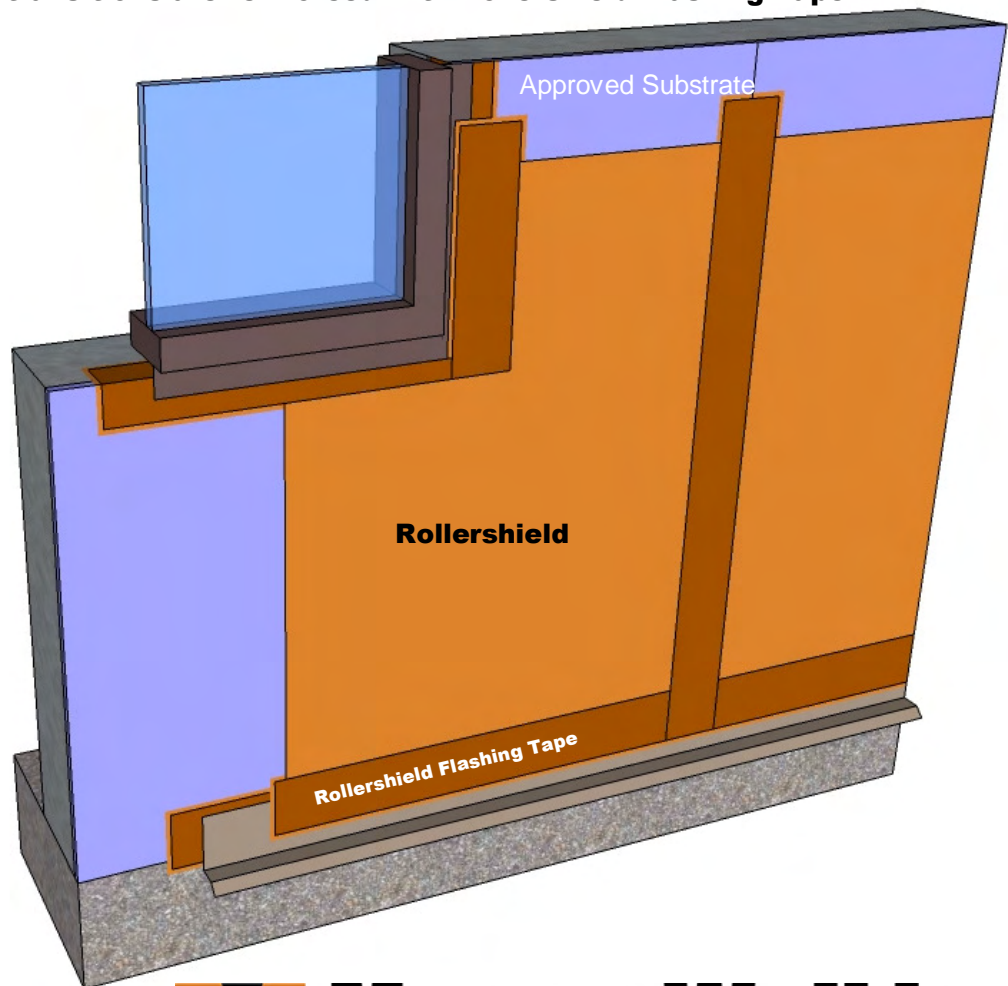
### System Use

- Commercial
- Residential

The Rollershield LAB Liquid-applied Air/Water Barrier system works under all claddings that require a secondary water barrier including stone, brick, stucco and Master Wall® EIFS. The system consists of the following components:

- Rollershield Air/Water Barrier, supplied in 5 gallon (19L) pails
- Rollershield Flashing Tape for openings and sheathing applications

Rollershield is applied with a foam roller or spray equipment to 10 mils dry thickness and forms a continuous water barrier. Sheathing board joints and transitions are reinforced with Rollershield Flashing Tape.



**M** Master Wall Inc.®  
*Building a Culture of Excellence*

[masterwall.com](http://masterwall.com)

PO Box 397 • Fortson • GA • 31808 • 800-755-0825 • Tech: 800-760-2861



# Rollershield LAB

## Short Form Specification

### 1.0 General

This is a short form specification. Refer to Rollershield LAB specifications and details for additional information.

#### 1.1 System Description

The Master Wall Inc.® Rollershield LAB System is a liquid applied vapor permeable air and water barrier.

#### 1.2 Design Requirements:

- A. Reference Master Wall® suggested details and architectural drawings for specific detail requirements.
- B. Maximum deflection of substrates shall not exceed L/240.
- C. Typical acceptable substrates include unpainted brick, masonry, concrete, plywood, Oriented Strand Board (OSB) or gypsum sheathings (ASTM C1396 or C1177). Contact Master Wall® for other approved substrates.

#### 1.3 Job Conditions

- A. Store all materials protected from weather and direct sunlight at temperatures above 40°F (5°C).
- B. The ambient and wall temperature shall be a minimum of 40°F (5°C) and shall remain so for at least 24 hours after installation.

### 2.0 Products

All components of the Rollershield System shall be manufactured by Master Wall Inc.® and supplied by an authorized distributor.

#### A. Water Barrier & Flashing Tapes:

- 1. Rollershield: A 100% pure acrylic-based roll-applied weather-resistive barrier.
- 2. Rollershield Flashing Tape: A lightweight nonwoven joint treatment material.

### 3.0 Installation

- A. Inspect the substrate to ensure that it is free of all foreign materials that would affect the adhesion of the Rollershield LAB.
- B. Apply the coatings in strict accordance with Master Wall® specifications, product data sheets, architectural drawings and architectural specifications.

#### ASTM C297 Tensile Bond

Dens Glass Gold	31.6 psi
Exterior Gypsum	28.2 psi
OSB	40.4 psi
Plywood	79.1 psi
Cement Board	70.6 psi
Copper	185.1 psi
Galvanized Steel	180.8 psi
Rigid PVC	168.2 psi
Aluminum	184.2 psi
Color Coated Aluminum	203.5 psi
Stainless Steel	183.0 psi

#### ASTM D1970

@ 22 mils dft	Pass
---------------	------

#### ASTM D2247 Water Resistance/ICC-ES AC212

Exterior Gypsum	Pass
Dens Glass Gold	Pass
Cement Board	Pass
Plywood	Pass
OSB	Pass

#### ASTM E-84 Combustibility

Flamespread-5  
Smoke Developed-5

#### ASTM E96 Water Vapor Transmission

203 g/24 hr/m<sup>2</sup>  
30.5 perms

#### ASTM E2178 Air Permeability

0.0002 cfm/ft<sup>2</sup> at 1.57 psf

#### ASTM E2273 EIFS Drainage Performance

ICC-ES AC212 99.2% Efficiency

#### ASTM E2357 Air Leakage Resistance

0.003 L/s/m<sup>2</sup> @ 75 Pa  
0.02 L/s/m<sup>2</sup> @ 300 Pa

#### ICC-ES AC212 Full Scale Conditioning and Water Testing

Pass

#### ICC-ES AC212 Freeze Thaw

Plywood	Pass
Cement Board	Pass
OSB	Pass
Exterior Gypsum	Pass
Dens Glass Gold	Pass

#### ICC-ES AC212 Weathering, 55 cm Head

Exterior Gypsum	Pass
Dens Glass Gold	Pass
Cement Board	Pass
OSB	Pass
Plywood	Pass

#### NFPA 285 Multi-Story Fire Test

Pass

## We finish strong.

Information contained in this product data sheet conforms to the standard detail recommendations and specifications for the installation of Master Wall Inc.® products and is presented in good faith. Master Wall Inc.® assumes no liability, expressed or implied as to the architecture, engineering, or workmanship of any project. This information may be concurrent with, or superseded by other applicable documents, such as specifications and details. Contact Master Wall Inc.® for the most current product information. ©2017 Master Wall Inc.®



PO Box 397 • Fortson • GA • 31808 • 800-755-0825 • Tech: 800-760-2861



**Master Wall Inc.®**  
Building a Culture of Excellence

## PRODUCT DATA

### SUPERIORSHIELD ROLLERSHIELD-RS

SuperiorShield Rollershield-RS is a high quality 100% acrylic flexible fluid applied air and water barrier that is easily applied with a roller or spray equipment but also can be troweled or brushed into place. Rollershield-RS forms a continuous air and water barrier that protects approved substrates from incidental water damage.

#### FEATURES & BENEFITS

- Used as an air/water barrier or as part of the Rollershield Drainage CIFS® System
- 100% Coverage, Fully adhered to substrate
- Vapor open/permeable with low air infiltration rate
- Used as water barrier and flashing, 60-minute Grade D equivalent
- Compatible with other SuperiorShield products; Rollershield-TG (Trowel Grade), Rollershield-VB, SuperiorFlash and WeatherSTOP Tape
- Adheres to most common building materials
- Easy to apply, water based for easy cleanup
- Exposure up to 6 months
- Low VOC, <1% by weight, 10 g/L

Application Temperature: 40° -110°F (5° -43°C)

Dry to Touch: 1 hour @ room temperature

Recoat Time: 2 hours @ room temperature

Drying Time: 12 hours @ room temperature, working and drying time will vary with temperature and humidity.

#### JOB CONDITIONS

Air and substrate temperature for application of Rollershield-RS must be 40°F (5°C) or higher and must remain 40°F (5°C) or higher for a minimum of 24 hours. Provide temporary protection to protect the wall system from damage until permanent flashings, caps and sealants are installed. Store materials within prescribed temperature limits and out of direct sunlight. Working and drying times are based upon normal room temperature conditions and will vary with temperature and humidity.

#### PREPARATION

The substrate must be approved by Master Wall Inc.®, clean, dry, structurally sound, and free of efflorescence, oil, grease, form release agents and curing compounds or anything that would affect bond. Painted surfaces are not acceptable and must be removed or bond test performed. Substrates must be flat and free of fins or planar irregularities greater than 1/4" in 10'-0" (6.35 mm in 3.05 m).

#### Coverage per pail (sf/sm)\*

Roller: 450-500 sf (42-46 sm)

Spray: 300-350 sf (28-32.5 sm)

Trowel: 200-250 sf (18-23 sm)

*\*All coverage is approximate and depend upon substrate, details and individual application*

#### Packaging/Shelf Life/Storage

Packaging: 5 gallon (19L) pail

Product Color: Naranja Durazno

Shelf Life: 2 years

Storage: Protect from extreme heat (90°F (32°C)), freezing and direct sunlight.

#### Technical Data

Solids Content: 69.52% solids by wt (55.05% by vol)

Tensile Bond, ASTM C297/E2134/AC212: 30-200 psi

Freeze-thaw ASTM E2485/AC212: Pass

Water Resistance, ASTM D2247/AC212: Pass

Water Vapor Transmission, ASTM E96 Proc. B/AC212: 30 perms\*\* @ 10 mils, 15 perms @ 20 mils

Air Permeance, ASTM E2178: 0.001 cfm/ft2 @ 1.57 psf, 0.001 L/s/m2 @ 75 Pa

Air Leakage, ASTM E2357: 0.0006 cfm/ft2 @ 1.57 psf (0.003 L/s/m2 @ 75 Pa), 0.04 cfm/ft2 @ 6.24 psf (0.02 L/s/m2 @ 300 Pa)

Structural Performance, ASTM E1233/AC212: Pass

Racking, ASTM E72/AC212: Pass

Restrained Environmental, AC212: Pass

Water Penetration, ASTM E331/AC212: Pass

UV Exposure: Rated to 6 months

Accelerated Aging, AC212: Pass

Hydrostatic Pressure Test, AATCC 127/AC212: Pass

Surface Burning Characteristics, ASTM E84: Flame Spread < 25, Smoke Developed < 450

Intermediate Multi-Story Fire Test, NFPA 285 (UBC 26-9): Pass

Nail Sealability, ASTM D1970: Pass @ 22 mils

Heat and Smoke Release Rates, ASTM E1354, IBC Section 1403.5: Peak Heat Release Rate = 32 kW/m2, Total Heat Release Rate = 3.6 MJ/m2, Effective Heat of Combustion = 2.5 MJ/kg

\*\* Defined as a Class III vapor retarder per IBC and IRC

## APPLICATION PROCEDURE

Concrete – Must have cured a minimum of 28 days prior to the application of Rollershield-RS. If form release agents or curing compounds exist on the surface, they must be removed with a solution of muriatic acid or similar product (with appropriate precautions). Remove any residual acid by flushing with water.

Brick/Masonry – If joints are not struck flush, multiple coats may be required. Porous CMU may require additional coats.

Sheathing Applications - Sheathing gaps must be less than 1/4" (6.4 mm). See Technical Bulletin #189 for larger gap suggestions. Gap wood-based sheathing per manufacturers recommendations, typically 1/8" (3.2 mm) minimum.

Mixing - Thoroughly stir Rollershield-RS into a homogenous consistency. Do not add water, over mix, or add accelerators or retarders to the product.

Application – Rollershield-RS is applied by first treating the joints and fastener locations where sheathing is used, then coating the entire surface using brush, roller, trowel, or airless spray equipment techniques. When using a foam roller, a maximum 3/4" (19 mm) nap is recommended. Apply in an even, continuous coat, maintaining a wet edge of approximately 15 mils thickness. Oriented Strand Board and other porous substrates will require two (2) coats of Rollershield-RS. For moisture protection, apply Rollershield-RS as a continuous barrier of 10 mils dry thickness with no breaks or skips, although some areas will appear lighter than others due to the application process. The application need not look like a painted surface.

Joint Treatment—Apply a thin layer of Rollershield-RS to the joints and embed SuperiorShield Flashing Tape into the wet mixture and trowel smooth. Alternatively place and center SuperiorShield Mesh over all joints, corners, and gaps in the substrate. Immediately apply Rollershield-RS over the mesh and allow to dry.

Rollershield-RS may be flashed into window, door and other openings using the same techniques for sheathing applications. Any remaining gaps should be filled with additional Rollershield-RS, TG (Trowel Grade) or SuperiorFlash.

Wall Treatment—Apply Rollershield-RS to the wall surface using the foam roller, trowel or by spray applying and backrolling to a uniform thickness of 15 mils wet, 10 mils dry with no pinholes or voids.

## LIMITATIONS

Not for use as an exterior finish, note exposure limitations on front page.

When adhering Rollershield Drainage CIFS® to the surface assure it is clean, dry, and free of surface contamination. Remove any dirt or surface contamination before adhesive attachment.

Allowable in-service temperature range: -40° to 180°F (-40° to 82°C).

Fire-retardant or pressure treated plywood must be dry with surface free of salts or other chemicals migrating from within the wood. Test adhesion to be sure of desired results.

Use a slip sheet, typically one layer of building paper between Rollershield-RS and stucco or adhered masonry veneer over metal lath.

**Hazard:** This chemical is not considered hazardous according to the OSHA Hazard Communication Standard 2012 (29 CFR 1910.1200).

### Approved Substrates

Exterior gypsum sheathing (ASTM C1396)

Glass Fiber Exterior Sheathing (ASTM C1177): Dens Glass Gold®, GlasRoc®, FiberBond®, Gold Bond e2xp®, etc.

Cement Board Substrates (ASTM C1325): Durock®, PermaBase®, ProTEC®, SelectCrete, Util-A-Crete®, etc.

Concrete

Brick

Masonry

Exterior Plywood

Oriented Strand Board (OSB)

Huber Zip (See Data Sheet for Specifics)

Most metals and PVC

Others approved in writing

### Compatible SuperiorShield Components

Rollershield-TG

SuperiorFlash

SuperiorShield Flashing Tape

SuperiorShield Mesh

WeatherSTOP Tape

### Sealant Bond Compatibility\*\*

*Adfast Corp.:* Adseal DWSP1940 Series\*\*\*, Adseal 4600, Adseal 4580, Adseal 1940

*Dow Corning:* 795 Silicone\*\*

*Pecora Corp.:* 864NST, 890NST, 890FTS, 895NST<sup>A</sup>, Dynatrol I-XL Hybrid<sup>B</sup>

Sika: Silaflex 15 LM\*\*\*, Silaflex-2C NS\*\*\*

Master Builders Solutions: MasterSeal NP1\*\*\*

Tremco: Dymonic 100\*\*\*

Most polyurethane sealants\*\*

See Technical Bulletin MW#131 for latest sealant information

\*\*field verify bond (varies)

\*\*\*Also bonds to SuperiorFlash

<sup>A</sup>With P120 Primer with Rollershield RS & TG

<sup>B</sup>With P120 Primer with Rollershield VB

## SPRAY APPLICATION

Rollershield-RS is compatible with GRACO and Titan airless spray equipment with the following specifications:

- Minimum 1 gallon per minute output.
- Minimum hose width of 3/8 inch.
- Minimum tip size of 0.027–0.031.

Minimum pressure requirement to spray of 2,000 psi at the gun with an airless sprayer rated no lower than 3,300 psi. Remove all filters in sprayer and gun before application.

Hopper Gun: 3/16"-1/4" (6-6.5 mm) orifice, 23-25 psi.

## CLEAN UP

Tools and equipment can be cleaned with soapy water when Rollershield-RS is wet.

Information contained in this product data sheet conforms to the standard detail recommendations and specifications for the installation of Master Wall Inc.<sup>®</sup> products and is presented in good faith. Master Wall Inc.<sup>®</sup> assumes no liability, expressed or implied as to the architecture, engineering, or workmanship of any project. This information may be concurrent with, or superseded by other applicable documents, such as specifications and details. Contact Master Wall Inc.<sup>®</sup> for the most current product information. ©2022 Master Wall Inc.<sup>®</sup>



## Health & Safety

### WARNING!

Causes eye and skin irritation.

Precautionary Statement

Wash hands thoroughly after handling. Wear protective gloves/protective clothing/eye protection/face protection.

### FIRST AID MEASURES

Eye: Contact Rinse thoroughly with water as necessary. Get medical attention immediately if symptoms occur.

Skin: Contact Wash off with water. Consult a physician if necessary.

Inhalation: Move to fresh air. If symptoms arise, call a physician.

Ingestion: Clean mouth with water and afterwards drink plenty of water. Do NOT induce vomiting.

Consult a physician. Never give anything by mouth to an unconscious person.

Store locked up. Dispose of contents/container in accordance with Local, State, Federal and Provincial regulation.

Spills: Collect with suitable absorbent material such as cotton rags.

Disposal: Dispose of in accordance with local, state or federal regulations.

Warning: KEEP CONTAINER CLOSED WHEN NOT IN USE. KEEP OUT OF THE REACH OF CHILDREN. NOT FOR INTERNAL CONSUMPTION. FOR INDUSTRIAL USE ONLY.

Consult the Safety Data Sheet (SDS) in the Products section at [masterwall.com](http://masterwall.com) for further health and safety information.

### LIMITED WARRANTY

This product is subject to a written limited material or system warranty. Obtain a warranty from the Tech Support tab of our website. Refer to Specifications for more complete information on proper use and handling of this product.



**Master Wall Inc.**  
Building a Culture of Excellence

## PRODUCT DATA

### SUPERIORSHIELD FLASHING TAPE

Lightweight non adhesive roll flashing material with superior strength and the ability to bridge most gaps or voids common in construction. Embedded into wet Rollershield-RS, TG or VB, it is used at flashing transitions with Master Wall® SuperiorShield Liquid Air/Water Barrier (LAB) and as part of Rollershield Drainage CIFS® applications. The tape easily embeds into wet Rollershield and dries to a highly reinforced yet flexible flashing.

#### FEATURES & BENEFITS

- Lightweight
- Strong
- Embeds easily
- Thin, will not build up wall surface
- Compatible with Rollershield RS, TG, VB and SuperiorFlash products

#### JOB CONDITIONS

Air and substrate temperature for application of SuperiorShield Flashing Tape must be 40°F (5°C) or higher. Follow Rollershield-RS, TG or VB temperatures and condition requirements.

#### PREPARATION

General—The substrate must be clean, dry, structurally sound, and free of efflorescence, oil, grease, form release agents and curing compounds. Test painted surfaces to verify bond.

Temporary Protection – Protect from weather until the Rollershield-RS, TG or VB products have set up.

Surface Preparation - Surface temperature must be above 40°F (5°C). Surface must be cured, clean, dry, structurally sound, and free of efflorescence, oil, grease, form release agents, and curing compounds.

#### Coverage estimate\*

4x8 sheets: Square Footage x 0.37 = linear feet of tape

Add linear footage around windows, doors, and other openings.

*\*All coverage is approximate and depend upon substrate, details and individual application*

#### Roll Sizing/Packaging/Shelf Life/Storage

4"x180' (10.2cm x 54.9m)

6"x180' (15.2cm x 54.9m)

9"x180' (22.9cm x 54.9m)

Packaging:

4": 18 rolls per case.

6" & 9": 12 rolls per case.

Shelf Life: 2 years plus

Storage: Protect from extreme heat (90°F (32°C)), and direct sunlight.

## APPLICATION PROCEDURE

General - SuperiorShield Flashing Tape is embedded into wet Rollershield-RS, TG or VB at flashing transitions (sheathing to framing, flashing, penetrations, etc.) and at sheathing board joints. Apply a generous layer of the product using a trowel, brush or roller and immediately embed the SuperiorShield Flashing Tape into the product and draw it tight and smooth working from the center to the edges.

Windows – The unique properties of the SuperiorShield air/water barrier system allows window flashing prior to the Rollershield wall application. Apply Rollershield and center SuperiorFlash Flashing Tape to provide at least at least 1” (25 mm) bond to the window flange and substrate on either side of the window opening. Use a “butterfly” at corners to complete the application making sure it covers all corner joints. For best results make sure the Rollershield covers the entire head, jamb, and sill areas. The use of sill wedges or water stops is encouraged.

Sheathing Applications – Apply Rollershield at least 2” (51 mm) either side of the sheathing board joint. Immediately embed the SuperiorShield Flashing Tape into the wet Rollershield and smooth with a trowel, centering it over the joint. Provide at least at least 1” (25 mm) bond either side of the sheathing joint. Lap Rollershield Mesh Tape 2” (51 mm) minimum Rollershield field application can begin as soon as the Rollershield is dry to the touch.

Information contained in this product data sheet conforms to the standard detail recommendations and specifications for the installation of Master Wall Inc.® products and is presented in good faith. Master Wall Inc.® assumes no liability, expressed or implied as to the architecture, engineering, or workmanship of any project. This information may be concurrent with, or superseded by other applicable documents, such as specifications and details. Contact Master Wall Inc.® for the most current product information. ©2022 Master Wall Inc.®



**Hazard:** This chemical is not considered hazardous according to the OSHA Hazard Communication Standard 2012 (29 CFR 1910.1200).

**VOC:** Less than 50 g/L.

### Approved Materials for Embedment

Rollershield-RS  
Rollershield-TG  
Rollershield-VB  
Others approved in writing

### LIMITED WARRANTY

This product is subject to a written limited material or system warranty. Obtain a warranty from the Tech Support tab of our website. Refer to Specifications for more complete information on proper use and handling of this product.

220701

## Master Wall® Insulation Board – Type X

Insulate your Master Wall® stucco project with extruded insulation board. Extruded insulation boards wrap the entire building to keep interior temperatures more consistent. It helps to reduce thermal bridging at framing.

### Board Sizes

2' x 8' (.61m x 2.4m)

4' x 8' (1.2m x 2.4m)

Edge Profile:

Square Edge, Tongue and Groove Edge

Board thickness:

Maximum 2" (51mm)

Minimum 3/4" (19.1mm)

### Technical Data

Meets or Exceeds ASTM C578, ASTM C273, ASTM E2430, ASTM E2568.

ASTM C578, Type X

Minimum Density: 1.30 pcf

R-Value (U-Value) at 75°F (9°C): 5.0 (0.20)

Compressive strength, min., PSI (kPa): 15.0 (104)

Flexural Strength, min., PSI (kPa) : 40 (276)

Water Vapor Permeance of 1.00 in (25.2 mm) thickness, max., perm (ng/Pa.s.m<sup>2</sup>): 1.5 (86)

Water absorption by total immersion, max., volume, % : 0.3

Dimensional stability (change in dimensions), max., %: 2.0

Oxygen index, min., volume, %: 24.0

Flame spread, max.: 25.0

Smoke development, max. 450

For a full listing of approved manufacturers please reference the insulation board page at [masterwall.com](http://masterwall.com)

### Features & Benefits

- Continuous Insulation for Wall Assemblies
- Reduces air movement in wall
- Reduces life cycle CO2 emissions
- Controls dew point / moisture condensation in wall
- Long lasting, strong, stable
- HCFC Free
- 20% Pre-consumer Recycled Content

### Application Procedure

**Temporary Protection** – Provide temporary and permanent protection to prevent water entry behind the system.

**Substrate Preparation** – Applications must be to an approved substrate with a maximum variation tolerance of 1/4" in 10'-0" (6.4 mm in 3.05m). Contact Master Wall for approved substrates and recommended attachment methods.

#### Application

The Insulation Board can be easily cut using handsaws, power saws, sharp knives, or thermal cutting tools.

Install insulation tightly in accordance with Master Wall Inc.® and manufacturer recommendations in a running bond pattern, interlock inside and outside corners.

Fasten insulation boards in place using approved fastening method in the center of the board at framing locations. In general attach the insulation board to the framing members at the center of the board using approved fasteners and support plates such as Wind-Lock Lath Lock or ULP 302, Demand DP300, Buildex Gridmate or Master Wall® approved equal.

Provide closure where insulation board is exposed at grade. Reference Plastic Accessories data sheet or use metal closure where fire resistance is needed.



Information contained in this product data sheet conforms to the standard detail recommendations and specifications for the installation of Master Wall Inc.® products and is presented in good faith. Master Wall Inc.® assumes no liability, expressed or implied as to the architecture, engineering, or workmanship of any project. This information may be concurrent with, or superseded by other applicable documents, such as specifications and details. Contact Master Wall Inc.® for the most current product information. ©2020 Master Wall Inc.®

**masterwall.com**

**PO Box 397 • Fortson • GA • 31808 • 800-755-0825**



# Drainage Media

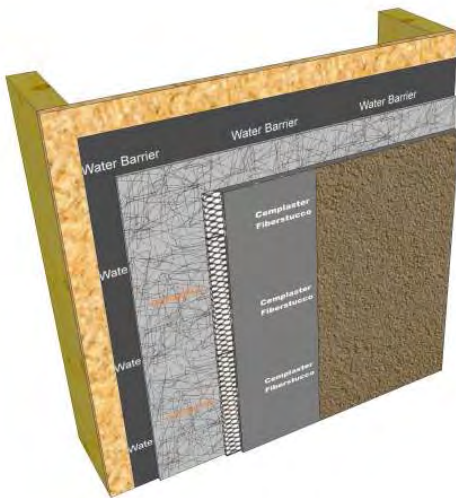
## Systems

Aggre-flex Drainage EIFS  
Cemplaster Fiberstucco  
QRW1 Drainage EIFS  
Stucco Cement Board Coatings

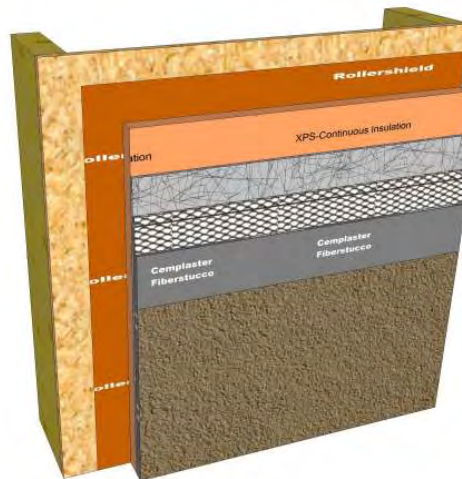
## Approved Manufacturers

Advanced Building Products Inc.  
Benjamin Obdyke  
Cosella-Dorcen  
Keene Building Products  
Plastic Components

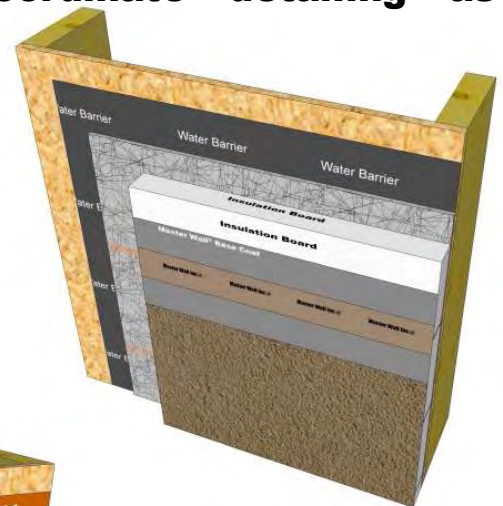
**Drainage media has been used behind Master Wall® Systems for many years. The drainage media can vary from a very thin cross section material, a thicker version designed to prevent capillary action to a true ventilated wall cavity. The designs will vary and Master Wall® is available to help coordinate detailing as needed.**



**Drainage Mat under Cemplaster Fiberstucco**



**Drainage Mat under Insulated Cemplaster Fiberstucco**



**Drainage Mat under Aggre-flex Drainage EIFS**

**M Master Wall Inc.®**  
*Building a Culture of Excellence*

[masterwall.com](http://masterwall.com)

PO Box 397 • Fortson • GA • 31808 • 800-755-0825 • Tech: 800-760-2861



# Drainage Media

The following manufactures are approved by Master Wall Inc.®:

Manufacturer	Product	Type	Approved Systems	Comments
<b>Advanced Building Products Inc.</b> advancedbuildingproducts.com	Mortairvent	Rainscreen Mat with Backer Fabric, 6 mm & 10 mm	Aggre-flex Drainage EIFS, Cemplaster Stucco, OCS, Stucco Cement Board Coatings, QRW1 Drainage EIFS	Minimum 1–1/2" Insulation board required for EIFS, Two water barriers required under Master Wall stucco systems
<b>Benjamin Obdyke</b> benjaminobdyke.com	Home Slicker	Rainscreen Mat	Aggre-flex Drainage EIFS, Cemplaster Stucco, OCS, Stucco Cement Board Coatings, QRW1 Drainage EIFS	Minimum 1–1/2" Insulation board required for EIFS, weather barrier required behind stuccos to prevent bonding to mat
	Home Slicker Plus Typar	Rainscreen Mat with water barrier	Aggre-flex Drainage EIFS, Cemplaster Stucco, OCS, Stucco Cement Board Coatings, QRW1 Drainage EIFS	Minimum 1–1/2" Insulation board required for EIFS, weather barrier required behind stuccos to prevent bonding to mat
	Home Slicker Stone & Stucco	Rainscreen Mat with mortar fabric	Cemplaster Stucco, OCS	Two water barriers required under Master Wall stucco systems
<b>Cosella-Dorcken</b> cosella-dorcken.com	Delta Dry	True Ventilated Wall Cavity	Aggre-flex Drainage EIFS, Cemplaster Stucco, OCS, Stucco Cement Board Coatings, QRW1 Drainage EIFS	Provide ventilation path for moisture migration. Minimum 1–1/2" Insulation board required for EIFS, weather barrier required behind stuccos to prevent bonding to Delta Dry
<b>Keene Building Products</b> keenebuilding.com	Driwall Rainscreen 020-1	Rainscreen Mat with mortar fabric	Aggre-flex Drainage EIFS, Cemplaster Stucco, OCS, Stucco Cement Board Coatings, QRW1 Drainage EIFS	Minimum 1–1/2" Insulation board required for EIFS, weather barrier required behind stuccos to prevent bonding to mat
	Driwall Rainscreen 10mm	Rainscreen Mat with mortar fabric	Aggre-flex Drainage EIFS, Cemplaster Stucco, OCS, Stucco Cement Board Coatings, QRW1 Drainage EIFS	Minimum 1–1/2" Insulation board required for EIFS, weather barrier required behind stuccos to prevent bonding to mat
	Driwall Rainscreen 075	Wide Spaced Rainscreen Mat	Cemplaster Stucco, OCS	Two water barriers required under Master Wall stucco systems
	Driwall Rainscreen 075-1	Wide Spaced Rainscreen Mat with mortar fabric	Cemplaster Stucco, OCS	Two water barriers required under Master Wall stucco systems
<b>Plastic Components</b> plasticcomponents.com	Ultra-Lath	Plastic Lath in sheets or rolls	Aggre-flex Drainage EIFS, Stucco Cement Board Coatings, QRW1 Drainage EIFS	Systems must be mechanically attached through plastic lath
<b>Varies</b>	Varies	2.5#/sy metal lath fastened to substrate in accordance with ASTM C1063	Aggre-flex Drainage EIFS, QRW1 Drainage EIFS	Aggre-flex Drainage may be adhered to the metal lath with F&M or MBB Adhesives, others must be mechanically attached through metal lath

Information contained in this product data sheet conforms to the standard detail recommendations and specifications for the installation of Master Wall Inc.® products and is presented in good faith. Master Wall Inc.® assumes no liability, expressed or implied as to the architecture, engineering, or workmanship of any project. This information may be concurrent with, or superseded by other applicable documents, such as specifications and details. Contact Master Wall Inc.® for the most current product information. ©2015 Master Wall Inc.®



PO Box 397 • Fortson • GA • 31808 • 800-755-0825 • Tech: 800-760-2861



# Stucco Accessories

## Systems

Cemplaster Fiberstucco

## Manufacture Locations:

Verify with manufacturer

## Recycled Content:

Varies with manufacturer

**Packaging (trims):** Typically 10' lengths

**Weight:** Varies

## Typical Grounds

**(thickness):** 3/8" (9.5mm),  
1/2" (13mm), 5/8" (16mm),  
3/4" (19mm), 7/8" (22mm)

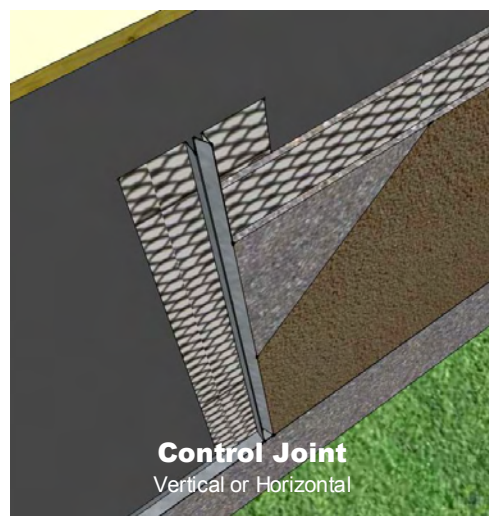
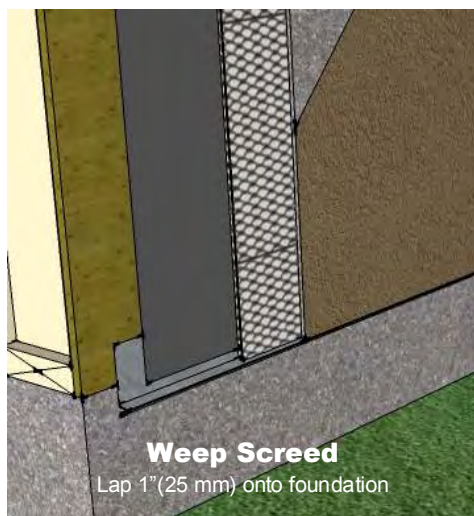
## Materials:

1. PVC, ASTM D 1784.
2. Galvanized Metal, ASTM A 653 with G60 or G90 coating.
3. Zinc, ASTM B 69.
4. Stainless Steel, ASTM C841 Type 304.

## Lath Reinforcement:

**CFS01**, 3/8" thick No. 17 gauge galvanized steel woven wire fabric, ASTM C1032.  
**CFS03**, 1/2" thick 2.5 lb./yd<sup>2</sup> (1.4 kg/m<sup>2</sup>) self-furred galvanized steel diamond mesh metal lath, ASTM C 847.  
**CFS03-SS**, 1/2" thick 2.5 lb./yd<sup>2</sup> (1.4 kg/m<sup>2</sup>) self-furred stainless steel diamond mesh metal lath, ASTM C 847.  
**CFS04 & 05**, 3/4 - 7/8" thick 3.4 lb./yd<sup>2</sup> (1.8 kg/m<sup>2</sup>) self-furred galvanized steel diamond mesh metal lath, ASTM C 847.  
**CFS04 & 05-SS**, 3/4 - 7/8" thick 3.4 lb./yd<sup>2</sup> (1.8 kg/m<sup>2</sup>) self-furred stainless steel diamond mesh metal lath, ASTM C 847, 304 or 316 stainless steel.

**Stucco accessories are used to help gauge the thickness of stucco systems, help control stucco movement and form corners. Lath reinforcement is used to reinforce the stucco.**



## Manufacturers

**Amico Building Products**<sup>1,2,3,4</sup> 800-366-2642, [www.amico-lath.com](http://www.amico-lath.com)

**CEMCO**<sup>2</sup> 800-775-2362, [www.cemcosteel.com](http://www.cemcosteel.com)

**ClarkDietrich Building Systems**<sup>1,2,3</sup> 513-870-1100, [www.clarkdietrich.com](http://www.clarkdietrich.com)

**Plastic Components**<sup>1</sup> 800-327-7077, [www.plasticcomponents.com](http://www.plasticcomponents.com)

**Vinyl Corp.**<sup>1</sup> 800-648-4695, [www.vinylcorp.com](http://www.vinylcorp.com)

**Wind-Lock**<sup>1</sup> 800-872-5625, [www.wind-lock.com](http://www.wind-lock.com)

## Product Test Standards

ASTM A653, ASTM B69, ASTM C841, ASTM C847, ASTM C926, ASTM C1063, ASTM D1784, Plastic may not be suitable for non-combustible construction assemblies.

 **Master Wall Inc.**<sup>®</sup>  
*Building a Culture of Excellence*  
[masterwall.com](http://masterwall.com)

PO Box 397 • Fortson • GA • 31808 • 800-755-0825 • Tech: 800-760-2861



# Stucco Accessories

## Application Procedure

After satisfactory inspection of surfaces and correction of any deviations from specification requirements commence the Cemplaster Fiberstucco installation in accordance with Master Wall Specifications.

### Weep Screed Installation

Install foundation weep screed at the base of the wall securely to framing with the appropriate fastener. Locate foundation weep screed so that it overlaps the joint between the foundation and framing by a minimum of 1 inch (25 mm). Locate the foundation weep screed minimum 4 inches (101 mm) above earth grade, 2 inches (51 mm) above finished grade (paved surfaces, for example).

### Weather Protection

Weather barrier will lap onto foundation weep screed as noted in Master Wall® details. Verify that WRB installation is complete.

### Casing Bead and Expansion Joint Installation

Install casing beads at Cemplaster Fiberstucco terminations—doors, windows and other through wall penetrations. Install expansion joints (or back-to-back casing beads) at building expansion joints, where the Cemplaster Fiberstucco is to be installed over dissimilar construction or substrates, at changes in building height, at floor lines, columns, and cantilevered areas. Install full accessory pieces where possible and avoid small pieces. Seal adjoining pieces by embedding ends in sealant. Abut horizontal into vertical joint accessories. Attach at 6-inch (152 mm) centers into framing with appropriate fasteners.

(Note: refer to architectural drawings for joint locations and accessory type. Moisture protection must be continuous behind joints and accessories.)

### Control Joint Installation

Install control joints every 144 ft<sup>2</sup> (13.4 m<sup>2</sup>) for walls and 100 ft<sup>2</sup> (9.3 m<sup>2</sup>) maximum (as indicated on the construction documents). Tack in place as insure proper alignment during the application of the lath. Wire tie control joints to lath at 6 inches (152 mm) on center if framing members aren't present under the accessory. Seal any exposed ends and edges preferably by setting them in sealant during installation to prevent water entry.

### Lath Installation

**Diamond Mesh Metal Lath:** General—install metal lath with the long dimension at right angles to structural framing. Terminate lath at expansion joints. Do not install continuously beneath joints. Seams/overlaps – overlap side seams a minimum of ½ inch (13 mm) and end seams a minimum 1-inch (25 mm). Stagger end seams. Overlap casing beads and expansion joints minimum 1 inch (25 mm) over the narrow wing accessories and 2 inches over expanded flange accessories. Attachment—fasten securely through sheathing into structural framing at 6 inches (152 mm) on center maximum vertically and 16-24 inches (41-61 cm) on center horizontally\*. Wire tie horizontal laps at 8 inches (204 mm) on center at: side laps, accessory overlaps, and where end laps occur between supports.

**Florida HVHZ:** 7/8" minimum thickness of Cemplaster Fiberstucco, 3.4#/sy metal lath fastened 4" (102 mm) on center vertically and 16" (41 cm) on center horizontally.

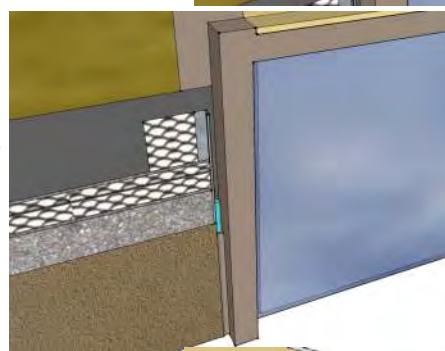
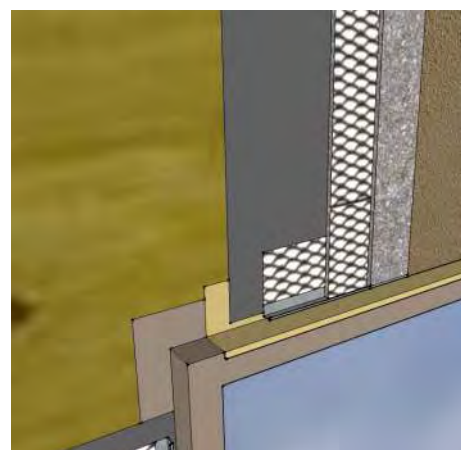
**Welded wire fabric lath**—follow installation as for metal lath except overlap all seams by one mesh minimum. **Paper-backed lath**—follow installation as for metal lath. Lap lath over lath, not paper to lath overlap. For horizontal overlaps the paper backing must lap shingle style behind the lath-to-lath overlap.

Apply Striplath, minimum 4" x 12" (102 mm x 305 mm), in type and weights of selected lath at casing bead corners if control joints aren't located there.

**Inside and Outside Corners:** Install corner lath at inside corners and corner bead at outside corners over lath. Attach through lath into framing at 6 inches (152 mm) on center with appropriate fasteners.

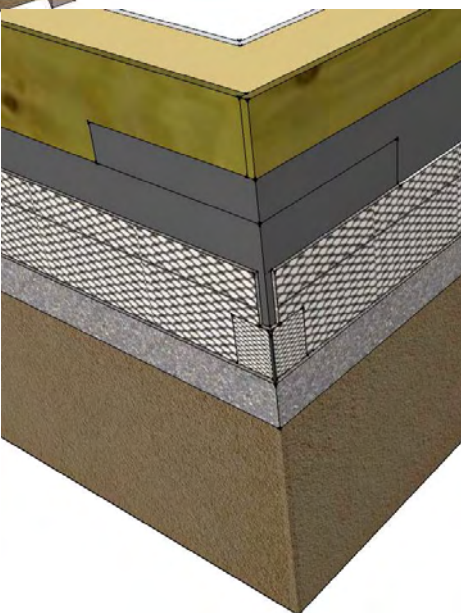
(\*Note: the type fastener selected, its layout and pullout or withdrawal value from the supporting construction must be verified and approved by the project engineer/architect with respect to design wind load and local building code requirements).

Information contained in this product data sheet conforms to the standard detail recommendations and specifications for the installation of Master Wall Inc.® products and is presented in good faith. Master Wall Inc.® assumes no liability, expressed or implied as to the architecture, engineering, or workmanship of any project. This information may be concurrent with, or superseded by other applicable documents, such as specifications and details. Contact Master Wall Inc.® for the most current product information. ©2016 Master Wall Inc.®



**Casing Bead**  
(above)

**Corner Bead**  
(below)



 **Master Wall Inc.®**  
*Building a Culture of Excellence*  
**masterwall.com**

**PO Box 397 • Fortson • GA • 31808 • 800-755-0825 • Tech: 800-760-2861**



# Stucco Ad-Liquid

## **Systems**

Cemplaster Fiberstucco  
Traditional Stucco  
Branded Manufactured Stucco

**VOC: 5 g/l**

**Manufacture Locations:**

**30058 • 77474 • 84651**

**Recycled Content: 0%**

## **Packaging:**

**5 gallon (19L) pail**

**55 gallon (208L) drums**

**Pail Weight: 42 lbs (19 kg)**

**Drum Weight: 462 lbs (210**

**kg)**

**Shelf Life: 2 years**

## **Suggested Levels (Varies)**

**Cemplaster Fiberstucco: 3  
quarts to 5 gallons (2.8-19 L)  
per mix**

**Stucco: 6 quarts to 5 gallons  
(5.6-19 L) per mix**

**Stucco Ad-Liquid is an easy to use polymer modifier that is added directly to traditional stucco**



**or Cemplaster Fiberstucco mix to improve the overall quality of the material.**

- **Improved Compressive Strength**
- **Improved Tensile Strength**
- **Improved Weather Resistance**
- **Mold-X™ Bactericide included**
- **Reduced Shrinkage**
- **Reduces Stucco Cracking**
- **Reduced Brittleness**
- **Eliminates Fogging Requirement**
- **Slows Cure and Increases Flexibility**

 **Master Wall Inc.®**  
*Building a Culture of Excellence*  
[masterwall.com](http://masterwall.com)

**PO Box 397 • Fortson • GA • 31808 • 800-755-0825 • Tech: 800-760-2861**



# Stucco Ad-Liquid

**Temp: 40°-110°F (5°-43°C) • Working Time: 1.5 hr • Dry Time: 72 hrs**  
at room temperature, working and drying time will vary with temperature and humidity

## Application Procedure

Job Conditions - Air and substrate temperature for application of Stucco Ad-Liquid must be 40°F (5°C) or higher and must remain 40°F (5°C) or higher for a minimum of 24 hours. Surface must be clean, dry, structurally sound and free of efflorescence, oil, grease, form release agents, paint and curing compounds.

Temporary Protection – Provide temporary and permanent protection to prevent water entry behind the stucco.

Proportioning – Proportions will vary depending upon use. Reference Master Wall® Cemplaster Fiberstucco specifications for warranted system proportions. In general, the product will achieve minimal properties such as improved crack resistance with levels as low as one quart (0.95L) per 280# (127 kg) of mixed stucco. Substituting Stucco Ad-Liquid for water in the stucco mix provides optimal performance. Vary proportions to meet specific project requirements or contact Master Wall for recommendations.

Mixing – Use non air entrained stucco mix. Slowly add Stucco Ad-Liquid to the mixture and mix for a short time (about 1 to 2 minutes) to avoid air entrapment.

### Application

Apply stucco mix according to locally, regionally and nationally accepted practices to the specified thicknesses. When drying, Stucco Ad-Liquid forms a film or sheen that aids in the hydration of the stucco.

### For Professional Results

Do not use with air entrained cement mixes or with air entraining admixtures. Do not use where air circulation is limited.

Protect from extreme water exposure for a minimum of 24 hours.

Fogging the wall is not recommended when Stucco Ad-Liquid is used.

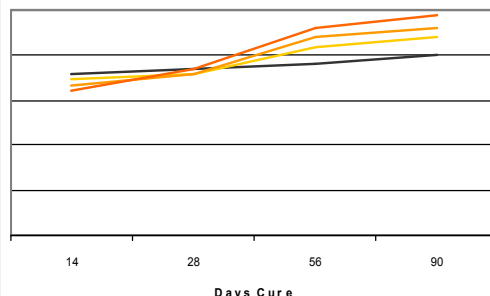
Do not use as a stucco surface primer or external bonding agent—use Primecoat or Roller-flex depending upon application.

Do not over mix.

### Clean Up

Tools and equipment can be cleaned with soapy water when the stucco mixture is wet.

## Stucco Ad-Liquid Performance



**SA01** Master Wall® Stucco Ad Liquid, mixed 3 quarts (2.8 liters) per mix of Cemplaster Fiberstucco, 1 quart (0.95 liters) of Ready Cemplaster Fiberstucco.

**SA02** Master Wall® Stucco Ad Liquid, mixed 2 gallons (7.6 liters) per mix of Cemplaster Fiberstucco, 3 quarts (2.8 liters) of Ready Cemplaster Fiberstucco.

**SA03** Master Wall® Stucco Ad Liquid, mixed 5 gallons (19 liters) per mix of Cemplaster Fiberstucco, 1-1/2 gallons (5.7 liters) of Ready Cemplaster Fiberstucco.

Member



Information contained in this product data sheet conforms to the standard detail recommendations and specifications for the installation of Master Wall Inc.® products and is presented in good faith. Master Wall Inc.® assumes no liability, expressed or implied as to the architecture, engineering, or workmanship of any project. This information may be concurrent with, or superseded by other applicable documents, such as specifications and details. Contact Master Wall Inc.® for the most current product information.



**Master Wall Inc.®**  
Building a Culture of Excellence

[masterwall.com](http://masterwall.com)

PO Box 397 • Fortson • GA • 31808 • 800-755-0825 • Tech: 800-760-2861



**Master Wall Inc.**  
Building a Culture of Excellence

## PRODUCT DATA

### CEMPLASTER FIBERSTUCCO

Master Wall® Cemplaster Fiberstucco is a fibered Portland cement-based bagged stucco with exceptional workability, open working time, water retention, early strength, shrinkage resistance and long-term durability.

#### FEATURES & BENEFITS

- Concentrate, mix with sand and water
- Fibered for better crack resistance
- Can be modified with Stucco Ad-Liquid for better tensile, compression and mold-resistance
- For application over lath or direct-applied to approved substrates
- Manufacturer Warranty

Application Temperature: 40°-110°F (5°-43°C)

Working Time: 1 hour

Set Time: 1-2 hours

Cure Time: 48-72 hrs at room temperature, working and drying time will vary with temperature and humidity.

#### JOB CONDITIONS

Air and substrate temperature for application of Cemplaster Fiberstucco must be 40°F (5°C) or higher and must remain 40°F (5°C) or higher for a minimum of 24 hours. Provide temporary protection to protect the wall system from damage until permanent flashings, caps and sealants are installed. Store materials in a dry place, within prescribed temperature limits and out of direct sunlight. Working and drying times are based upon normal room temperature conditions and will vary with temperature and humidity.

#### PREPARATION

Preparation - The substrate must be approved by Master Wall Inc.®, clean, dry, structurally sound and free of efflorescence, oil, grease, form release agents and curing compounds or anything that would affect bond. Painted surfaces are not acceptable and must be removed or metal lath applied. All sheathed applications must receive a minimum of 2-layers code-approved asphalt felt or equivalent.

Prepare smooth or non-absorbent solid substrates by one of the following methods or a combination; Sandblasting, chipping or acid etching, A dash-bond coat applied forcefully, Bonding compounds such as Master Wall® Stucco Ad-Liquid or BA57, Furred or self-furring metal plaster bases as per ASTM C1063.

#### Coverage per bag (sf/sm)\*

3/8" (9.5 mm) thick: 80 sf (7.4 sm)

1/2" (12.7 mm) thick: 70 sf (6.5 sm)

3/4" (19 mm) thick: 40 sf (3.7 sm)

7/8" (22 mm) thick: 34 sf (3.1 sm)

*\*All coverage is approximate and depend upon substrate, details and individual application*

#### Packaging/Shelf Life/Storage

Packaging: 80 lb. (36 kg) moisture resistant bags.

Shelf Life: 1 year

Storage: Protect from weather in a cool dry area, with low humidity.

#### Technical Data

- ASTM C109 Compressive Strength -1900 psi
- ASTM E330 Wind-rated Assemblies -81-108 psf Ultimate Load
- ASTM G155 Accelerated Weathering - Pass
- ICC-ES AC11 Durability Testing - Pass
- ASTM E136 - Noncombustible
- ASTM C926 compliant following standard practices

Recognized in INTERTEK CCRR-0215

## APPLICATION PROCEDURE

Mixing Instructions: Each bag of Cemplaster Fiberstucco is mixed with 200 lbs (90.7 kg) of sand aggregate (ASTM C897 or ASTM C144) and clean, potable water (200 lbs is roughly 2.5 cubic feet (0.07 cubic meters) of clean, damp-loose sand or 2-3/4 Master Wall® pails, filled). Using a clean mixer, first add 1/2 to 2/3 the water required, 1/2 the sand, 1 bag Cemplaster Fiberstucco, then the rest of the sand and water to achieve the desired workability. Mix materials for 3 to 5 minutes after all materials are in the mixer. Total water content can vary between 4 to 6.5 gallons (15-24.5L). Stucco Ad-Liquid may also be used instead of an equal amount of water (up to 5 gallons, 18.9L). See system data sheet for specific levels required for increased warranties.

Tempering—The mixed stucco can be re-tempered one time within 1 hour. Material older than 1-1/2 hours should be discarded.

### Application

Direct Applied to Masonry: Dampen absorptive masonry just before application with water or Master Wall® BA57 Bonding Agent.

Scratch Coat: apply Cemplaster Fiberstucco with sufficient pressure to key into and embed the metal lath (if used). Apply sufficient material, approximately half the Cemplaster Fiberstucco ground thickness to cover the metal lath and to permit scoring the surface. Score the Cemplaster Fiberstucco horizontally upon completion of each panel in preparation for brown coat if a “double back” application of a wet scratch and brown coat isn’t being used.

Brown Coat: as soon as the scratch coat is firm enough to receive the brown coat without damage, apply the brown coat with sufficient pressure to ensure intimate contact with the first coat to an approximate thickness as needed to bring the Cemplaster Fiberstucco to a uniform thickness that matches the grounds of the accessories. Use a rod or straight edge to bring the surface to a true, even plane. Fill depressions in plane with Cemplaster Fiberstucco.

After the Cemplaster Fiberstucco has become slightly firm float the surface lightly with a Darby or wood float to densify the surface and to provide a smooth, even surface.

## CLEAN UP

Tools and equipment can be cleaned with soapy water while the Cemplaster Fiberstucco mixture is still wet.

## Curing Recommendations

Cure following ASTM C926 guidelines or other method acceptable to the design professional for 48-72 hours. Mixes with Master Wall® Stucco Ad Liquid do not need moist curing.

Allow to cure until clean, dry and hard before finishing:

- Typically 7-14 days if no Master Wall® Stucco Ad Liquid is used.
- After 72 hours if Master Wall® Stucco Ad Liquid is used provided the Cemplaster Fiberstucco is clean, dry and hard.
- After 24 hours if using a leveling base coat (LBC).

**Hazard:** This chemical is not considered hazardous according to the OSHA Hazard Communication Standard 2012 (29 CFR 1910.1200).

**WARNING:** Products containing crystalline silica (airborne particles of respirable size) are known to the State of California to cause cancer. For more information go to [www.p65Warnings.ca.gov](http://www.p65Warnings.ca.gov).

**VOC:** Less than 50 g/L.

## Approved Substrates

Self-furring Metal Lath

Concrete

Brick

Masonry

Others approved in writing

Information contained in this product data sheet conforms to the standard detail recommendations and specifications for the installation of Master Wall Inc.® products and is presented in good faith. Master Wall Inc.® assumes no liability, expressed or implied as to the architecture, engineering, or workmanship of any project. This information may be concurrent with, or superseded by other applicable documents, such as specifications and details. Contact Master Wall Inc.® for the most current product information. ©2022 Master Wall Inc.®



**Master Wall Inc.®**  
Building a Culture of Excellence

## PRODUCT DATA

### READY CEMPLASTER FIBERSTUCCO

Master Wall® Ready Cemplaster Fiberstucco is a fibered Portland cement-based bagged stucco with exceptional workability, open working time, water retention, early strength, shrinkage resistance and long-term durability.

#### FEATURES & BENEFITS

- Ready to use, mix with water
- Great for jobsites with limited space for on-site storage
- Fibered for better crack resistance
- Can be modified with Stucco Ad-Liquid for better tensile, compression and mold-resistance
- For application over lath or direct-applied to approved substrates
- Manufacturer Warranty

Application Temperature: 40°-110°F (5°-43°C)

Working Time: 1 hour

Set Time: 1-2 hours

Cure Time: 48-72 hrs at room temperature, working and drying time will vary with temperature and humidity.

#### JOB CONDITIONS

Air and substrate temperature for application of Ready Cemplaster Fiberstucco must be 40°F (5°C) or higher and must remain 40°F (5°C) or higher for a minimum of 24 hours. Provide temporary protection to protect the wall system from damage until permanent flashings, caps and sealants are installed. Store materials in a dry place, within prescribed temperature limits and out of direct sunlight. Working and drying times are based upon normal room temperature conditions and will vary with temperature and humidity.

#### PREPARATION

The substrate must be approved by Master Wall Inc.®, clean, dry, structurally sound and free of efflorescence, oil, grease, form release agents and curing compounds or anything that would affect bond. Painted surfaces are not acceptable and must be removed or metal lath applied. All sheathed applications must receive a minimum of 2-layers code-approved asphalt felt or equivalent.

Prepare smooth or non-absorbent solid substrates by one of the following methods or a combination; Sandblasting, chipping or acid etching, A dash-bond coat applied forcefully, Bonding compounds such as Master Wall® Stucco Ad-Liquid or BA57, Furred or self-furring metal plaster bases as per ASTM C1063.

#### Coverage perbag (sf/sm)\*

3/8" (9.5 mm) thick: 22 sf (2 sm)

1/2" (12.7 mm) thick: 20 sf (1.8 sm)

3/4" (19 mm) thick: 11 sf (1 sm)

7/8" (22 mm) thick: 9.4 sf (0.9 sm)

*\*All coverage is approximate and depend upon substrate, details and individual application*

#### Packaging/Shelf Life/Storage

Packaging: 80 lb. (36 kg) moisture resistant bags.

Shelf Life: 6-12 months

Storage: Protect from weather in a cool dry area, with low humidity.

#### Technical Data

- ASTM C109 Compressive Strength 1900 psi
- ASTM E330 Wind-rated Assemblies 81-108 psf Ultimate Load
- ASTM G155 Accelerated Weathering - Pass
- ICC-ES AC11 Durability Testing - Pass
- ASTM E136 - Noncombustible
- ASTM C926 compliant following standard practices

Recognized in IAPMO UES ER-0381

## APPLICATION PROCEDURE

**Mixing** - Each bag of Ready Cemplaster Fiberstucco is mixed clean, potable water. Using a clean mixer, first add 1/2 to 2/3 the water required, 1 bag Ready Cemplaster Fiberstucco, then the rest of the water to achieve the desired workability. Mix materials for 3 to 5 minutes after all materials are in the mixer. Total water content can vary between 1 to 1.5 gallons (3.8-5.7L). Stucco Ad-Liquid may also be used instead of an equal amount of water. See system data sheet for specific levels required for increased warranties.

**Tempering**—The mixed stucco can be re-tempered one time within 1 hour. Material older than 1-1/2 hours should be discarded.

### Application

**Direct Applied to Masonry:** Dampen absorptive masonry just before application with water or Master Wall® BA57 Bonding Agent.

**Scratch Coat:** apply Ready Cemplaster Fiberstucco with sufficient pressure to key into and embed the metal lath (if used). Apply sufficient material, approximately half the Ready Cemplaster Fiberstucco ground thickness to cover the metal lath and to permit scoring the surface. Score the Ready Cemplaster Fiberstucco horizontally upon completion of each panel in preparation for brown coat if a “double back” application of a wet scratch and brown coat isn’t being used.

**Brown Coat:** as soon as the scratch coat is firm enough to receive the brown coat without damage, apply the brown coat with sufficient pressure to ensure intimate contact with the first coat to an approximate thickness as needed to bring the Ready Cemplaster Fiberstucco to a uniform thickness that matches the grounds of the accessories. Use a rod or straight edge to bring the surface to a true, even plane. Fill depressions in plane with Ready Cemplaster Fiberstucco.

After the Ready Cemplaster Fiberstucco has become slightly firm float the surface lightly with a Darby or wood float to densify the surface and to provide a smooth, even surface.

## CLEAN UP

Tools and equipment can be cleaned with soapy water while the Ready Cemplaster Fiberstucco mixture is still wet.

## Curing Recommendations

Cure following ASTM C926 guidelines or other method acceptable to the design professional for 48-72 hours. Mixes with Master Wall® Stucco Ad Liquid do not need moist curing.

Allow to cure until clean, dry and hard before finishing:

- Typically 7-14 days if no Master Wall® Stucco Ad Liquid is used.
- After 72 hours if Master Wall® Stucco Ad Liquid is used provided the Cemplaster Fiberstucco is clean, dry and hard.
- After 24 hours if using a leveling base coat (LBC).

**Hazard:** This chemical is not considered hazardous according to the OSHA Hazard Communication Standard 2012 (29 CFR 1910.1200).

**WARNING:** Products containing crystalline silica (airborne particles of respirable size) are known to the State of California to cause cancer. For more information go to [www.p65Warnings.ca.gov](http://www.p65Warnings.ca.gov).

VOC: Less than 50 g/L.

### Approved Substrates

Self-furring Metal Lath  
Concrete  
Brick  
Masonry  
Others approved in writing

Information contained in this product data sheet conforms to the standard detail recommendations and specifications for the installation of Master Wall Inc.® products and is presented in good faith. Master Wall Inc.® assumes no liability, expressed or implied as to the architecture, engineering, or workmanship of any project. This information may be concurrent with, or superseded by other applicable documents, such as specifications and details. Contact Master Wall Inc.® for the most current product information.  
©2022 Master Wall Inc.®



**Master Wall Inc.®**  
Building a Culture of Excellence

## PRODUCT DATA

### CEMPLASTER FIBERSTUCCO CO-BRAND PRODUCTS

As part of our Cemplaster Fiberstucco Systems, Master Wall Inc.® allows select products as part of our warranty program. Warranties are available up to 20-years depending upon product selections and combinations.

#### FEATURES & BENEFITS

- Warranties up to 20-years through Master Wall Inc.®
- Preblended and Concentrate options
- Locally and regionally available for LEED compliance
- Engineered for consistency

Warranties for all projects will be provided by Master Wall® following our regular process. For coverage the following needs to be completed:

- Materials must be purchased through an authorized Master Wall® distributor.
- A warranty must be requested for the project, including all QUIKRETE® requirements noted on the request form.
- The applicator must be certified and current.
- To request a warranty go to the Tech/Support page at [masterwall.com](http://masterwall.com) and fill out the form.

**See our Systems page for Cemplaster Fiberstucco Warranties**

Information contained in this product data sheet conforms to the standard detail recommendations and specifications for the installation of Master Wall Inc.® products and is presented in good faith. Master Wall Inc.® assumes no liability, expressed or implied as to the architecture, engineering, or workmanship of any project. This information may be concurrent with, or superseded by other applicable documents, such as specifications and details. Contact Master Wall Inc.® for the most current product information. ©2021 Master Wall Inc.®



**Master Wall Inc.®**  
Building a Culture of Excellence

#### CO-BRAND PRODUCTS

QUIKRETE® One Coat Fiberglass Reinforced Stucco (FRS) (No. 1200 Sanded, No. 1216-Concentrated)

QUIKRETE® Base Coat Stucco Scratch & Brown (No. 1139) & Base Coat Stucco - Pump Grade (No. 1139-86)\*

QUIKRETE® Base Coat Stucco with Water-Stop (No. 1139-89)\*

QUIKRETE® Base Coat Stucco - Pump Grade (No. 1139-86)\*

FRS Lightweight Stucco (No. 1201-56)\*

SPEC MIX® SCRATCH AND BROWN FIBER REINFORCED STUCCO(SU-04)\*

SPEC MIX® Scratch and Brown Preblended Stucco\*

SPEC MIX® Fiber Base Coat (FBC)

WESTERN 1-Kote Gray Concentrate

WESTERN 1-Kote Gray Premium Concentrate

WESTERN 1-Kote Premium Sanded Gray

WESTERN 1-Kote Sanded Gray

\*Apply these stucco products in accordance with ASTM C926 and Master Wall® requirements.



## AGGRE-FLEX MESH

Master Wall® Aggre-flex Mesh is a specially woven, glass fiber mesh with AR Coating (Alkali Resistive). Embedded in Master Wall® base coats, Aggre-flex Mesh is the key impact and tensile component in Master Wall® EIFS and wall systems. It can also improve crack resistance in Master Wall® Cemplaster Fiberstucco Systems, traditional stucco or foam shapes.

## FEATURES & BENEFITS

- **Detail Mesh** – super soft, pliable mesh used for backwrapping, special shapes, and detail work.
- **Standard Mesh**–Standard weight mesh for wall areas and general detailing. Industry leading impact resistance.
- **Hi-Tech Mesh**–Upgraded heavier weight version of Standard Mesh with good workability.
- **Medium Mesh**–Extra tough heavy weight mesh. Best for areas of light traffic.
- **Strong Mesh**–Great high traffic mesh where impacts are a consideration.
- **Ultra Mesh**–Best where abuse is expected. Ultra heavy for high traffic areas.
  - **Strong Mesh and Ultra Mesh** must be used in a two-layer system.
- **Corner Roll**– For highly impact resistant corners. Apply under Standard or higher mesh.

## MESH WEIGHT AND COVERAGE

	Mesh Weight	Roll Size	Coverage*
Detail	4.5 oz/sy (113 g/sm)	9.5" x 150' (96.5cm x 45.7m)	119 sf (11 sm)
Standard - 38	4.6 oz/sy (156 g/sm)	38" x 150' (96.5cm x 45.7m)	475 sf (44.1 sm)
Standard - 48	4.6 oz/sy (156 g/sm)	48" x 150' (122 cm x 45.7m)	600 sf (55.7 sm)
Hi-Tech	6.0 oz/sy (202 g/sm)	48" x 150' (122cm x 45.7m)	600 sf (55.7sm)
Medium	11.0 oz/sy (370 g/sm)	38" x 75' (96.5cm x 22.8m)	238 sf (22.1 sm)
Strong	15.4 oz/sy (508 g/sm)	38" x 75' (96.5cm x 22.8m)	238 sf (22.1 sm)
Ultra	21.0 oz/sy (700 g/sm)	48" x 75' (122cm x 22.8m)	300 sf (22.1 sm)
Corner Roll	9.5 oz/sy (238 g/sm)	9.5" x 150' (96.5cm x 45.7m)	150 lf (45.7 m)

\*Allow about 10% waste for lapping all meshes (Strong, Ultra and Corner Roll Meshes are butted). Coverage will vary.

## PRODUCT TEST STANDARDS

ASTM D76, ASTM D578, ASTM D579, ASTM D1777, ASTM D3659, ASTM D3775, ASTM D3776, ASTM D4029, ASTM D5035, ASTM E2098, ASTM E2486. MIL-Y-1140

Weave: Full Leno

### Impact ASTM E2486 (Formerly EIMA 101.86)

### ASTM D5035 Tensile (warp/fill)

Standard Mesh	Medium Impact Resistance 50-89 in-lbs (5.7-10.1J)	247/280
Hi Tech Mesh	Medium Impact Resistance 50-89 in-lbs (5.7-10.1J)	140/250
Medium Mesh	Medium Impact Resistance 50-89 in-lbs (5.7-10.1J)	300/500
Medium & Standard	High Impact Resistance 90-150 in-lbs (10.2-17.0J)	300/500
Strong & Standard	Ultra High Impact Resistance 150+ in-lbs (over17.0J)	350/600
Ultra & Standard	Ultra High Impact Resistance 150+ in-lbs (over17.0J)	750/500
Corner Roll		274/274

## APPLICATION PROCEDURE

Job Conditions - Air and substrate temperature for embedment of the Reinforcing Mesh must be 40°F (5°C) or higher and must remain 40°F (5°C) or higher for a minimum of 24 hours. Provide temporary protection at all times until the wall system, including flashings, caps, and sealants, is completed to provide protection from climatic conditions and other potential damage.

Application - All imperfections in the insulation board must be rasped flush and any gaps in the insulation board must be filled with slivers of insulation. Apply the base coat over the entire surface of the insulation board in a thickness greater than that of the Reinforcing Mesh being used, approximately 1/16" (1.6 mm) for Standard Mesh and 3/32" (2.4 mm) for Ultra Mesh. Immediately embed the Aggre-flex Mesh into the wet base coat and smooth from the center to the edge to avoid wrinkles. Lap all meshes except Strong Mesh and Ultra Mesh a minimum of 2-1/2" (63.5 mm) on all sides. The reinforcing fabric must be continuous at all corners and lapped or abutted in accordance to Master Wall specifications. The color of the mesh shall not be visible but a slight mesh pattern may be visible. The overall minimum thickness of the base coat should be a nominal 1/16" (1.6 mm) when dry.

When applying Strong, Ultra or Corner Roll Mesh, tightly abut all edges and let cure for a minimum of 12 hours. Grind any imperfections with the edge of a stainless steel trowel or grinding stone, taking care not to damage the Aggre-flex Mesh, and apply a layer of Standard Mesh, Hi-Tech Mesh, or Medium Mesh as per the directions in the preceding paragraph. To minimize wall variations, the lap of the second mesh layer should not coincide with the abutment of the first layer.

### Special Conditions and Recommendations

Apply wrapping, backwrapping mesh or other approved accessory at all terminations of the insulation board. This includes at the top and bottom of all walls and at all openings.

Aggre-flex Mesh may be wrapped from the face of the insulation board onto a foundation or onto the studs of an opening on barrier wall systems. In all cases, the exposed edges of the insulation board must be wrapped with Aggre-flex Mesh and base coat or an approved accessory trim.



## Health & Safety

### WARNING!

Causes eye and skin irritation.  
Precautionary Statement  
Wash hands thoroughly after handling. Wear protective gloves/protective clothing/eye protection/face protection.

Consult the Safety Data Sheet (SDS) in the Products section at [masterwall.com](http://masterwall.com) for further health and safety information.

### LIMITED WARRANTY

This product is subject to a written limited material or system warranty. Obtain a warranty from the Tech Support tab of our website. Refer to Specifications for more complete information on proper use and handling of this product.

Information contained in this product data sheet conforms to the standard detail recommendations and specifications for the installation of Master Wall Inc.® products and is presented in good faith. Master Wall Inc.® assumes no liability, expressed or implied as to the architecture, engineering, or workmanship of any project. This information may be concurrent with, or superseded by other applicable documents, such as specifications and details. Contact Master Wall Inc.® for the most current product information.  
©2022 Master Wall Inc.®



# Bulltec Stucco Mesh

**Use with**  
Cemplaster Fiberstucco  
One Coat Stucco  
Traditional Stucco

**VOC: 0**  
**Shipping Locations:**  
**30058 • 77474 • 84651**

**Mesh Weight:**  
2.0 oz/sy (67 g/sm)

**Tensile Strength:**  
68 lbf./in. minimum

**Roll Size:**  
38" x 150'  
(96.5cm x 45.7m)

**Approximate Coverage per Roll:**  
475 sf (44.1 sm)

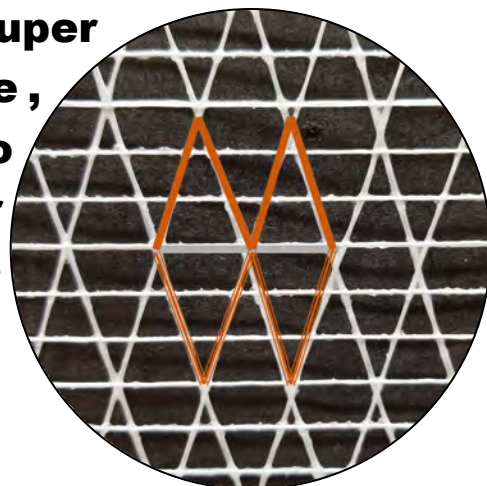
\*Allow about 10% waste for lapping mesh

**Packaging: 4 rolls per box  
25 boxes/pallet (100 rolls)**

**Master Wall® Bulltec Stucco Mesh is the solution to reduce stucco cracking and improve the performance of any stucco system. Bulltec is an alkali resistant lightweight mesh with an open weave of MW fabric that quickly and easily embeds into either wet stucco products or Master Wall® base coats.**

## Application Methods

- **Embedded into wet brown coats of Master Wall® Cemplaster Fiberstucco, One Coat Stucco or traditional stucco mixes**
- **As part of a leveling base coat application for a super smooth base, embedded into Master Wall® or Accent® Base Coats.**



# 5-Year Limited Warranty!

Also extends Cemplaster Fiberstucco System Warranties by One Year

**M Master Wall Inc.®**  
*Building a Culture of Excellence*  
**masterwall.com**

**PO Box 397 • Fortson • GA • 31808 • 800-755-0825 • Tech: 800-760-2861**



# Bulltec Stucco Mesh

## Application Procedure

Job Conditions - Air and substrate temperature for embedment of the Reinforcing Mesh must be 40°F (5°C) or higher and must remain 40°F (5°C) or higher for a minimum of 24 hours. Provide temporary protection at all times until the wall system, including flashings, caps, and sealants, is completed to provide protection from climatic conditions and other potential damage.

## Application

**Into Wet Stucco Bases:** Immediately embed the Bulltec Stucco Mesh into the wet stucco brown coat and smooth from the center to the edge to avoid wrinkles. Lap the mesh a minimum of 2-1/2" (63.5 mm) on all sides. The color of the mesh shall not be visible but a slight mesh pattern may be visible.

**Into Master Wall® Base Coats:** Over the dried stucco, apply the base coat over the entire surface of the stucco in a thickness of approximately 1/16" (1.6 mm). Immediately embed the Bulltec Stucco Mesh into the wet base coat and smooth from the center to the edge to avoid wrinkles. Lap the mesh a minimum of 2-1/2" (63.5 mm) on all sides. The color of the mesh shall not be visible but a slight mesh pattern may be visible.

Allow the stucco or base coats to cure prior to finishing.

Bulltec Mesh is not approved for EIFS or foam trim applications. Use Standard Mesh for foam trim.

Master Wall Inc. warrants Bulltec Stucco Mesh for 5 years from the date of installation. Master Wall Inc.'s exclusive liability under this warranty is to supply replacement materials less depreciation, if it is shown that the materials supplied by Master Wall Inc., were defective when installed by the Master Wall Inc. certified applicator. Remedies shall be solely determined by Master Wall Inc. and no other warranties are expressed or implied. For a valid warranty, the system and products must be installed in accordance with Master Wall Inc.'s written recommendations, specifications, details, bulletins and other project-specific written recommendations. Master Wall Inc. must be notified in writing within 30 business days of the original discovery of the defect.

Master Wall Inc., is not responsible for structural conditions, design conditions beyond those noted in our literature, architecture, engineering or workmanship of any project. This warranty does not cover failures or defects which are due to the failure on any building component, materials not manufactured or sold by Master Wall Inc. This warranty does not cover failures or defects resulting from improper installation of the products or workmanship, improper storage, abuse, vandalism, damage from accidental causes or negligence by any person, thermal movement, structural movement, structural failure, acts of God, engineering or design deficiencies, or defective or insufficient caulking.

Abuse, misuse, excessive weather or environmental conditions beyond what the products or systems have been tested, designed or approved for is expressly limited. Certain colors with organic pigments are less fade-resistant than others. The building, system and products must be properly maintained in accordance with Master Wall Inc., documents, local environmental conditions and good building practices. In no case is Master Wall Inc. responsible for incidental and consequential damages.

This warranty becomes effective only when all bills for the components of the system have been paid.

*Except as stated, Master Wall, Inc., expressly disclaims any warranty of merchantability or fitness for a particular purpose. The above remedies are to be deemed exclusive.*

Information contained in this product data sheet conforms to the standard detail recommendations and specifications for the installation of Master Wall Inc.® products and is presented in good faith. Master Wall Inc.® assumes no liability, expressed or implied as to the architecture, engineering, or workmanship of any project. This information may be concurrent with, or superseded by other applicable documents, such as specifications and details. Contact Master Wall Inc.® for the most current product information. ©2018 Master Wall Inc.®



Bulltec Stucco Mesh Embedded in Wet Stucco



Bulltec Stucco Mesh Embedded in Master Wall® Base Coat





**Master Wall Inc.®**  
Building a Culture of Excellence

## PRODUCT DATA

### F&M ADHESIVE AND BASE COAT

Foam & Mesh Adhesive (F&M) is a 100% acrylic formulated high performance base coat and adhesive used in Master Wall® Systems or over prepared substrates including brick, masonry, concrete and stucco.

### FEATURES & BENEFITS

- Adheres insulation board to approved substrates
- Base coat for Master Wall CIFS®, EIFS and other Systems
- Leveling coat for Cemplaster Fiberstucco and other stucco products
- Excellent water resistance
- Mixes 1:1 with Portland cement to a creamy consistency
- 100% Acrylic Polymers for durability
- Water-based - easy clean up with water

Application Temperature: 40°-110°F (5°-43°C)

Working Time: 1 hour

Set Time: Varies with temperature and humidity

Dry Time: 12 hours at room temperature, working and drying time will vary with temperature and humidity.

### JOB CONDITIONS

Air and substrate temperature for application of F&M must be 40°F (5°C) or higher and must remain 40°F (5°C) or higher for a minimum of 24 hours. Provide temporary protection to protect the wall system from damage until permanent flashings, caps and sealants are installed. Store materials within prescribed temperature limits and out of direct sunlight. Working and drying times are based upon normal room temperature conditions and will vary with temperature and humidity.

### PREPARATION

The substrate must be approved by Master Wall Inc.®, clean, dry, structurally sound and free of efflorescence, oil, grease, form release agents and curing compounds or anything that would affect bond. Painted surfaces are generally unacceptable without evaluation. Reference Technical Bulletins #173 and #187 for additional information.

### Coverage per pail (sf/sm)\*

Adhesive & Standard Base Coat:  
120 sf (11 sm)

Embedding Single-layer of Mesh:  
240-280 sf (22-26 sm)

Double Layer of Mesh:  
80-230 sf (7.5-21 sm)

Notched Trowel Adhesive Application:  
135 sf (12.5 sm)

*\*All coverage is approximate and depend upon substrate, details and individual application*

### Packaging/Shelf Life/Storage

Packaging: 5 gallon (19L) pail

Pail Weight: 60 lbs (27 kg)

Shelf Life: 2 years

Storage: Protect from extreme heat - 90°F (32°C) and above, freezing and direct sunlight.

### Technical Data

ASTM C297/E2134 - min 30 psi (208 kPa)

ASTM D897 - min 22 psi (152 kPa) ASTM  
D2247 - Pass

ASTM E84 - Pass

ASTM E96 - 12 perms

ASTM E331 - Pass to 12.0 psf (575 Pa)

ASTM E2485/EIMA 101.01\* - Pass NFPA  
268\* - Pass

NFPA 285 (UBC 26-9)\* - Pass

\*part of a larger assembly

## APPLICATION PROCEDURE

Mixing - Thoroughly stir F&M using a heavy duty 1/2" (12.7 mm) drill at 400 to 500 rpm and a heavy duty mixing paddle. Pour half of the stirred F&M into a clean plastic pail. Add Type I or I-II Portland cement to the half pail of F&M in a ratio of one-to-one by weight and mix to a homogenous consistency. Let the mixture stand for 3 to 5 minutes and then stir to a creamy consistency. Up to 30 ounces (0.9L) of clean, potable water may be added to a half pail to adjust workability. Do not over mix as faster setting or reduced working time can occur. Do not add accelerators or retarders to the F&M mixture.

## APPLICATION

**ADHESIVE APPLICATION** – Over gypsum or Rollershield coated substrates, apply the F&M mixture directly to the back of the insulation board using a 3/8" x 3/8" x 3/8" (9.5 x 9.5 x 9.5 mm) or a 3/8" x 1/2" x 1-1/2" (9.5 x 13 x 38 mm) stainless steel notched trowel. With the trowel at a 45-degree angle, cover the entire back of the insulation board with full beads of adhesive. Apply the adhesive so the ribbons run vertically when applied to the wall.

Over non-gypsum substrates where drainage is not required, you may use the above described notched trowel method or the 'ribbon and dab' method. Using a stainless steel plastering trowel, apply a 2" (50.8 mm) wide by 3/8" (9.5 mm) high ribbon of the F&M mixture around the entire perimeter of the insulation board. Place 8 dabs of the F&M mixture 3/8" (9.5 mm) thick by 4" (102 mm) in diameter approximately 8" (204 mm) on center inside the ribbon.

Immediately place the prepared insulation board on the substrate. Make sure that all edges of the insulation board are abutted tightly and that no F&M mixture gets into the board joints. Do not allow the F&M mixture to form a skin prior to placing the insulation board on the substrate. Do not apply the F&M mixture directly onto the substrate.

**BASE COAT APPLICATION** – Over insulation board, all imperfections in the board must be rasped flush and any gaps in the insulation board must be filled with slivers of insulation. Apply the F&M mixture over the entire surface of the insulation board in a thickness greater than that of the reinforcing fabric being used (approximately 1/16" (1.6 mm) for standard mesh and 3/32" (2.4 mm) for Ultra Mesh). Immediately embed the reinforcing fabric into the wet F&M mixture and smooth from the center to the edge to avoid wrinkles. The reinforcing fabric must be continuous at all corners and lapped or abutted in accordance with Master Wall® specifications. The color of the mesh shall not be visible, but a slight mesh pattern may be visible.

As a leveling coat over approved concrete, masonry, stucco, and other surfaces, apply the F&M mixture over the entire surface a nominal 1/16" (1.6 mm) thick. Where reinforcing mesh is specified, follow application methods for insulation board above.

**Hazard:** This chemical is not considered hazardous according to the OSHA Hazard Communication Standard 2012 (29 CFR 1910.1200).

**VOC:** Less than 50 g/L.

### Approved Substrates

Exterior gypsum sheathing  
(ASTM C1396, C1177)

Dens Glass Gold®  
GlasRoc®  
FiberBond®  
Gold Bond e2xp®  
Securock®  
Weather Defense Platinum™

Cement Board (ASTM C1325)  
Durock®  
PermaBase®  
Util-A-Crete®  
ProTEC®, ProGUARD®

Concrete  
Brick  
Masonry  
Metal Lath - Adhesive Application  
Adheres to Rollershield  
Others approved in writing

## CLEAN UP

Tools and equipment can be cleaned with soapy water while the F&M is still wet.

### WARNING, THIS PRODUCT CONTAINS SILICA

If sanding or scraping are performed, ventilate work area and/or use a NIOSH/MSHA-approved respirator in accordance with our Safety Data Sheet.

Information contained in this product data sheet conforms to the standard detail recommendations and specifications for the installation of Master Wall Inc.® products and is presented in good faith. Master Wall Inc.® assumes no liability, expressed or implied as to the architecture, engineering, or workmanship of any project. This information may be concurrent with, or superseded by other applicable documents, such as specifications and details. Contact Master Wall Inc.® for the most current product information. ©2022 Master Wall Inc.®



## Health & Safety

### WARNING!

Causes eye and skin irritation.  
Precautionary Statement

Wash hands thoroughly after handling. Wear protective gloves/protective clothing/eye protection/face protection.

### FIRST AID MEASURES

**Eye Contact:** Immediately flush eyes with plenty of water for at least 15 to 20 minutes. Ensure adequate flushing of the eyes by separating the eyelids with fingers. Get immediate medical attention.

**Skin Contact:** Immediately wash skin with plenty of soap and water for 15 to 20 minutes, while removing contaminated clothing and shoes. Get medical attention if irritation develops or persists.

**Inhalation:** If inhaled, remove to fresh air. If not breathing, give artificial respiration or give oxygen by trained personnel. Seek immediate medical attention.

**Ingestion:** If swallowed, do NOT induce vomiting. Call a physician or poison control center immediately. Never give anything by mouth to an unconscious person.

**Storage:** Store locked up. Dispose of contents/container in accordance with Local, State, Federal and Provincial regulation.

**Spills:** Collect with suitable absorbent material such as cotton rags.

**Disposal:** Dispose of in accordance with local, state or federal regulations.

**Warning:** KEEP CONTAINER CLOSED WHEN NOT IN USE. KEEP OUT OF THE REACH OF CHILDREN. NOT FOR INTERNAL CONSUMPTION. FOR INDUSTRIAL USE ONLY.

Consult the Safety Data Sheet (SDS) in the Products section at [masterwall.com](http://masterwall.com) for further health and safety information.

### LIMITED WARRANTY

This product is subject to a written limited material or system warranty. Obtain a warranty from the Tech Support tab of our website. Refer to Specifications for more complete information on proper use and handling of this product.



**Master Wall Inc.**  
Building a Culture of Excellence

## PRODUCT DATA

### MBB

Master Wall® Bagged Base Coat (MBB) is a dry polymer acrylic formulated high performance base coat and adhesive used in Master Wall® Systems or over prepared substrates including brick, masonry, concrete and stucco.

### FEATURES & BENEFITS

- Adheres insulation board to approved substrates
- Base coat for Master Wall CIFS®, EIFS and other Systems
- Leveling coat for Cemplaster Fiberstucco and other stucco products
- Excellent water resistance
- Freeze stable in dry form
- Convenient, mixes with water
- Easy clean up with water

Application Temperature: 40°-110°F (5°-43°C)

Working Time: 1 hour

Set Time: Varies with temperature and humidity

Dry Time: 12 hours at room temperature, working and drying time will vary with temperature and humidity.

### JOB CONDITIONS

Air and substrate temperature for application of MBB must be 40°F (5°C) or higher and must remain 40°F (5°C) or higher for a minimum of 24 hours. Provide temporary protection to protect the wall system from damage until permanent flashings, caps and sealants are installed. Store materials within prescribed temperature limits and out of direct sunlight. Working and drying times are based upon normal room temperature conditions and will vary with temperature and humidity.

### PREPARATION

The substrate must be approved by Master Wall Inc®, clean, dry, structurally sound and free of efflorescence, oil, grease, form release agents and curing compounds or anything that would affect bond. Painted surfaces are generally unacceptable without evaluation. Reference Technical Bulletins #173 and #187 for additional information.

#### Coverage per bag (sf/sm)\*

Adhesive & Standard Base Coat:

50-60 sf (4.6-536 sm)

Embedding Single-layer of Mesh:

100-125 sf (9-11.5 sm)

Double Layer of Mesh:

30-110 sf (2.5-10 sm)

Notched Trowel Adhesive Application:

56 sf (5.2 sm)

*\*All coverage is approximate and depend upon substrate, details and individual application*

#### Packaging/Shelf Life/Storage

Packaging: 50lb (22.7kg) bag

Shelf Life: 1 year

Storage: Protect from weather, high humidity and direct sunlight.

#### Technical Data

ASTM C297/E2134 - min 30 psi (208 kPa)

ASTM E96 - 12 perms

**APPLICATION PROCEDURE**

Mixing - Add 5 to 6 quarts (4.7-5.7L) of potable water to a clean plastic pail. Add the MBB slowly while stirring using a heavy-duty 1/2" (12.7mm) drill at 400 to 500 rpm and a heavy-duty Mixer. Mix thoroughly to a homogenous consistency. Let the mixture stand for 3 to 5 minutes and then stir to a creamy consistency. Small amounts of clean, potable water may be added to obtain a workable consistency. Do not over mix. Excessive stirring may cause faster setting and reduced working time. Do not add accelerators or retarders to the MBB mixture.

**APPLICATION**

*ADHESIVE APPLICATION* – Over gypsum or Rollershield coated substrates, apply the MBB mixture directly to the back of the insulation board using a 3/8" x 3/8" x 3/8" (9.5 x 9.5 x 9.5 mm) or a 3/8" x 1/2" x 1-1/2" (9.5 x 13 x 38 mm) stainless steel notched trowel. With the trowel at a 45-degree angle, cover the entire back of the insulation board with full beads of adhesive. Apply the adhesive so the ribbons run vertically when applied to the wall.

Over non-gypsum substrates where drainage is not required, you may use the above described notched trowel method or the 'ribbon and dab' method. Using a stainless steel plastering trowel, apply a 2" (50.8 mm) wide by 3/8" (9.5 mm) high ribbon of the F&M mixture around the entire perimeter of the insulation board. Place 8 dabs of the F&M mixture 3/8" (9.5 mm) thick by 4" (102 mm) in diameter approximately 8" (204 mm) on center inside the ribbon.

Immediately place the prepared insulation board on the substrate. Make sure that all edges of the insulation board are abutted tightly and that no F&M mixture gets into the board joints. Do not allow the MBB mixture to form a skin prior to placing the insulation board on the substrate. Do not apply the MBB mixture directly onto the substrate.

*BASE COAT APPLICATION* – Over insulation board, all imperfections in the board must be rasped flush and any gaps in the insulation board must be filled with slivers of insulation. Apply the MBB mixture over the entire surface of the insulation board in a thickness greater than that of the reinforcing fabric being used (approximately 1/16" (1.6 mm) for standard mesh and 3/32" (2.4 mm) for Ultra Mesh). Immediately embed the reinforcing fabric into the wet MBB mixture and smooth from the center to the edge to avoid wrinkles. The reinforcing fabric must be continuous at all corners and lapped or abutted in accordance with Master Wall® specifications. The color of the mesh shall not be visible, but a slight mesh pattern may be visible.

As a leveling coat over approved concrete, masonry, stucco, and other surfaces, apply the MBB mixture over the entire surface a nominal 1/16" (1.6 mm) thick. Where reinforcing mesh is specified, follow application methods for insulation board above.

Hazard: This chemical is not considered hazardous according to the OSHA Hazard Communication Standard 2012 (29 CFR 1910.1200).

VOC: Less than 50 g/L.

**Approved Substrates**

- Exterior gypsum sheathing (ASTM C1396, C1177)
- Dens Glass Gold®
- GlasRoc®
- FiberBond®
- Gold Bond e2xp®
- Securock®
- Weather Defense Platinum™
- Cement Board (ASTM C1325)
- Durock®
- PermaBase®
- Util-A-Crete®
- ProTEC®, ProGUARD®
- Concrete
- Brick
- Masonry
- Metal Lath - Adhesive Application
- Adheres to Rollershield
- Others approved in writing

## CLEAN UP

Tools and equipment can be cleaned with soapy water while the MBB is still wet.

### WARNING, THIS PRODUCT CONTAINS SILICA

If sanding or scraping are performed, ventilate work area and/or use a NIOSH/MSHA-approved respirator in accordance with our Safety Data Sheet.

Information contained in this product data sheet conforms to the standard detail recommendations and specifications for the installation of Master Wall Inc.® products and is presented in good faith. Master Wall Inc.® assumes no liability, expressed or implied as to the architecture, engineering, or workmanship of any project. This information may be concurrent with, or superseded by other applicable documents, such as specifications and details. Contact Master Wall Inc.® for the most current product information. ©2022 Master Wall Inc.®



## Health & Safety

### WARNING!

Causes eye and skin irritation.  
Precautionary Statement

Wash hands thoroughly after handling. Wear protective gloves/protective clothing/eye protection/face protection.

### FIRST AID MEASURES

**Eye Contact:** Immediately flush eyes with plenty of water for at least 15 to 20 minutes. Ensure adequate flushing of the eyes by separating the eyelids with fingers. Get immediate medical attention.

**Skin Contact:** Immediately wash skin with plenty of soap and water for 15 to 20 minutes, while removing contaminated clothing and shoes. Get medical attention if irritation develops or persists.

**Inhalation:** If inhaled, remove to fresh air. If not breathing, give artificial respiration or give oxygen by trained personnel. Seek immediate medical attention.

**Ingestion:** If swallowed, do NOT induce vomiting. Call a physician or poison control center immediately. Never give anything by mouth to an unconscious person.

**Storage:** Store locked up. Dispose of contents/container in accordance with Local, State, Federal and Provincial regulation.

**Spills:** Collect with suitable absorbent material such as cotton rags.

**Disposal:** Dispose of in accordance with local, state or federal regulations.

**Warning:** KEEP CONTAINER CLOSED WHEN NOT IN USE. KEEP OUT OF THE REACH OF CHILDREN. NOT FOR INTERNAL CONSUMPTION. FOR INDUSTRIAL USE ONLY.

Consult the Safety Data Sheet (SDS) in the Products section at [masterwall.com](http://masterwall.com) for further health and safety information.

### LIMITED WARRANTY

This product is subject to a written limited material or system warranty. Obtain a warranty from the Tech Support tab of our website. Refer to Specifications for more complete information on proper use and handling of this product.



# F&M Plus Adhesive & Base Coat

## Systems

Aggre-flex EIFS  
Aggre-flex Drainage EIFS  
Cemplaster Fiberstucco  
ICF Coatings  
QRW1 Drainage EIFS  
Rollershield Drainage CIFS®  
Soffit System  
Stucco Cement Board Coatings  
Uninsulated Finishes

**VOC: <1% by Weight**

**VOC: 0.9 g/l**

**Manufacture Locations:  
30058 • 77474 • 84651**

**Packaging: 5 gallon (19L)  
pail**

**Pail Weight: 60 lbs (27 kg)**

**Shelf Life: 2 years**

**Coverage (estimated)  
Adhesive & Standard Base  
Coat: 120 sf (11 sm)**

**Embedding Single-layer of  
Mesh: 240-280 sf (22-26 sm)**

**Double Layer of Mesh: 80-230  
sf (7.5-21 sm)**

**Notched Trowel Adhesive  
Application: 135 sf (12.5 sm)**

**F&M Plus is the high-build version of our Foam & Mesh Adhesive (F&M) used in Master Wall® Systems or over prepared substrates.**



- **High Build with leveling capability up to 1/4" (6.4 mm) thickness**
- **Fibered for better crack resistance**
- **Adheres insulation board to approved substrates**
- **Excellent water resistance**
- **Mixes 1:1 with Portland cement to a creamy consistency**
- **Base coat for Aggre-flex Mesh**

## Product Test Standards

ASTM C67, ASTM C297, ASTM D897, ASTM D2247, ASTM E2489/EIMA 101.86, ASTM D5420, ASTM E96, ASTM E330, ASTM E331, ASTM E2273, ASTM E2485, ASTM E84, IBC 1403, NFPA 268

**M Master Wall Inc.®**  
*Building a Culture of Excellence*

[masterwall.com](http://masterwall.com)

PO Box 397 • Fortson • GA • 31808 • 800-755-0825 • Tech: 800-760-2861



# F&M Plus Adhesive & Base Coat

**Temp: 40°-110°F (5°-43°C) • Working Time: 1 hr • Dry Time: 12 hrs**  
at room temperature, working and drying time will vary with temperature and humidity

## Application Procedure

**Job Conditions** - Air and substrate temperature for application of F&M PLUS must be 40°F (5°C) or higher and must remain 40°F (5°C) or higher for a minimum of 24 hours. Provide temporary protection to protect the wall system from damage until permanent flashings, caps and sealants are installed. Store materials within prescribed temperature limits and out of direct sunlight. Working and drying times are based upon normal room temperature conditions and will vary with temperature and humidity.

**Preparation** - The substrate must be approved by Master Wall Inc.®, clean, dry, structurally sound and free of efflorescence, oil, grease, form release agents and curing compounds or anything that would affect bond. Painted surfaces are not acceptable and must be removed.

**Mixing** - Thoroughly stir F&M PLUS using a heavy duty 1/2" (12.7 mm) drill at 400 - 500 rpm and a heavy duty mixing paddle. Pour half of the stirred F&M PLUS into a clean plastic pail. Add Type I or I-II Portland cement to the half pail of F&M PLUS in a ratio of one-to-one by weight and mix to a homogenous consistency. Let the mixture stand for 3 to 5 minutes and then stir to a creamy consistency. Up to 30 ounces (0.9L) of clean, potable water may be added to a half pail to adjust workability. Do not over mix as faster setting or reduced working time can occur. Do not add accelerators or retarders to the F&M PLUS mixture.

### Application

**Adhesive application** – Over gypsum substrates, apply the F&M PLUS mixture directly to the back of the insulation board using a 3/8"x3/8"x3/8" (9.5x9.5x9.5 mm) or a 3/8"x1/2"x1-1/2" (9.5x13x38 mm) stainless steel notched trowel. With the trowel at a 45° angle, cover the entire back of the insulation board with full beads of adhesive. Apply the adhesive so the ribbons run vertically when applied to the wall.

Over non-gypsum substrates, you may use the above described notched trowel method or the 'ribbon and dab' method. Using a stainless steel plastering trowel, apply a 2" (50.8 mm) wide by 3/8" (9.5 mm) high ribbon of the F&M PLUS mixture around the entire perimeter of the insulation board. Place 8 dabs of the F&M PLUS mixture 3/8" (9.5 mm) thick by 4" (102 mm) in diameter approximately 8" (204 mm) on center inside the ribbon.

### Approved Substrates

Exterior gypsum sheathing (ASTM C1396, C1177)

Dens Glass Gold®

GlasRoc®

FiberBond®

Gold Bond e2xp®

Securock®

Weather Defense Platinum™

Durock®

PermaBase®

Util-A-Crete®

ProTEC®, ProGUARD®

Concrete

Brick

Masonry

Metal Lath

Adheres to Rollershield

Others approved in writing

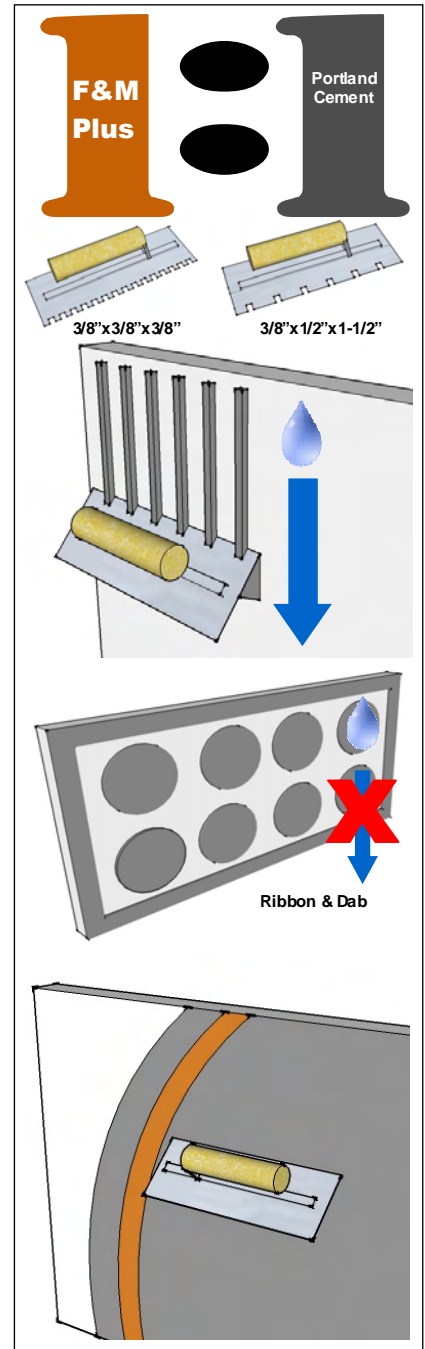
Immediately place the prepared insulation board on the substrate. Make sure that all edges of the insulation board are abutted tightly and that no F&M PLUS mixture gets into the board joints. Do not allow the F&M PLUS mixture to form a skin prior to placing the insulation board on the substrate. Do not apply the F&M PLUS mixture directly onto the substrate.

**For base coat application** – All imperfections in the insulation board must be rasped flush and any gaps in the insulation board must be filled with slivers of insulation. Apply the F&M PLUS mixture over the entire surface of the insulation board in a thickness greater than that of the reinforcing fabric being used (approximately 1/16" (1.6 mm) for standard mesh and 3/32" (2.4 mm) for Ultra Mesh). Immediately embed the reinforcing fabric into the wet F&M PLUS mixture and smooth from the center to the edge to avoid wrinkles. The reinforcing fabric must be continuous at all corners and lapped or abutted in accordance to Master Wall® specifications. The color of the mesh shall not be visible but a slight mesh pattern may be visible.

**Clean Up**—Tools and equipment can be cleaned with soapy water while the F&M PLUS is still wet.

### WARNING, THIS PRODUCT CONTAINS SILICA

If sanding or scraping are performed, ventilate work area and/or use a NIOSH/MSHA-approved respirator in accordance with our Safety Data Sheet.



Information contained in this product data sheet conforms to the standard detail recommendations and specifications for the installation of Master Wall Inc.® products and is presented in good faith. Master Wall Inc.® assumes no liability, expressed or implied as to the architecture, engineering, or workmanship of any project. This information may be concurrent with, or superseded by other applicable documents, such as specifications and details. Contact Master Wall Inc.® for the most current product information. ©2018 Master Wall Inc.®

**Master Wall Inc.®**  
Building a Culture of Excellence  
masterwall.com

PO Box 397 • Fortson • GA • 31808 • 800-755-0825 • Tech: 800-760-2861



# MBB Plus Adhesive & Base Coat

## **Systems**

Aggre-flex EIFS  
Aggre-flex Drainage EIFS  
Commercial Drainage EIFS  
Cemplaster Fiberstucco  
ICF Coatings  
QRW1 Drainage EIFS  
Rollershield Drainage EIFS  
Soffit System  
Stucco Cement Board Coatings  
Trowelshield Drainage EIFS  
Uninsulated Finishes

**VOC: 0**

**Shipping Locations:  
30058 • 77474 • 84651**

**Packaging: 50lb (22.7kg)  
bag**

**Shelf Life: 1 year**

**Coverage (estimated)  
Adhesive & Standard Base  
Coat: 50-60 sf (4.6-536 sm)**

**Embedding Single-layer of  
Mesh: 100-125 sf (9-11.5 sm)**

**Double Layer of Mesh: 30-110  
sf (2.5-10 sm)**

**Notched Trowel Adhesive  
Application: 56 sf (5.2 sm)**

**Master Wall® MBB Plus is the high-build version of our MBB adhesive and base coat. MBB Plus allows leveling up to 1/4" (6.4 mm) in a single pass.**



- **Adheres insulation board to approved substrates**
- **Excellent water resistance**
- **Freeze stable in dry form**
- **Convenient, mixes with water**
- **Base coat for Aggre-flex Mesh**

## **Product Test Standards**

ASTM C67, ASTM C297, ASTM D897, ASTM D2247, ASTM E2489/EIMA 101.86, ASTM D5420, ASTM E96, ASTM E330, ASTM E331, ASTM E2273, ASTM E2485, ASTM E84, IBC 1403, NFPA 268

 **Master Wall Inc.®**  
*Building a Culture of Excellence*

**masterwall.com**

**PO Box 397 • Fortson • GA • 31808 • 800-755-0825 • Tech: 800-760-2861**



# MBB Plus Adhesive & Base Coat

**Temp: 40°-110°F (5°-43°C) • Working Time: 1 hr • Dry Time: 12 hrs**  
at room temperature, working and drying time will vary with temperature and humidity

## Application Procedure

**Job Conditions** - Air and substrate temperature for application of MBB Plus must be 40°F (5°C) or higher and must remain 40°F (5°C) or higher for a minimum of 24 hours. Provide temporary protection to protect the wall system from damage until permanent flashings, caps and sealants are installed. Store materials within prescribed temperature limits and out of direct sunlight. Working and drying times are based upon normal room temperature conditions and will vary with temperature and humidity.

**Preparation** - The substrate must be approved by Master Wall Inc., clean, dry, structurally sound and free of efflorescence, oil, grease, form release agents and curing compounds or anything that would affect bond. Painted surfaces are not acceptable and must be removed.

**Mixing** - Add 5 to 6 quarts (4.7-5.7L) of potable water to a clean plastic pail. Add the MBB Plus slowly while stirring using a heavy-duty 1/2" (12.7mm) drill at 400 - 500 rpm and a heavy-duty Mixer. Mix thoroughly to a homogenous consistency. Let the mixture stand for 3 to 5 minutes and then stir to a creamy consistency. Small amounts of clean, potable water may be added to obtain a workable consistency. Do not over mix.

Excessive stirring may cause faster setting and reduced working time. Do not add accelerators or retarders to the MBB Plus mixture.

### Application

**Adhesive application** – Over gypsum substrates, apply the MBB Plus mixture directly to the back of the insulation board using a 3/8"x3/8"x3/8" (9.5x9.5x9.5 mm) or a 3/8"x1/2"x1-1/2" (9.5x13x38 mm) stainless steel notched trowel. With the trowel at a 45° angle, cover the entire back of the insulation board with full beads of adhesive. Apply the adhesive so the ribbons run vertically when applied to the wall.

Over non-gypsum substrates, you may use the above described notched trowel method or the 'ribbon and dab' method. Using a stainless steel plastering trowel, apply a 2" (50.8 mm) wide by 3/8" (9.5 mm) high ribbon of the MBB Plus mixture around the entire perimeter of the insulation board. Place 8 dabs of the MBB Plus mixture 3/8" (9.5 mm) thick by 4" (102 mm) in diameter approximately 8" (204 mm) on center inside the ribbon.

Immediately place the prepared insulation board on the substrate. Make sure that all edges of the insulation board are abutted tightly and that no MBB Plus mixture gets into the board joints. Do not allow the MBB Plus mixture to form a skin prior to placing the insulation board on the substrate. Do not apply the MBB Plus mixture directly onto the substrate.

### Approved Substrates

Exterior gypsum sheathing (ASTM C1396, C1177)

Dens Glass Gold®

GlasRoc®

FiberBond®

Gold Bond e2xp®

Securock®

Weather Defense Platinum™

Durock®

PermaBase®

Util-A-Crete®

ProTEC®, ProGUARD®

Concrete

Brick

Masonry

Metal Lath

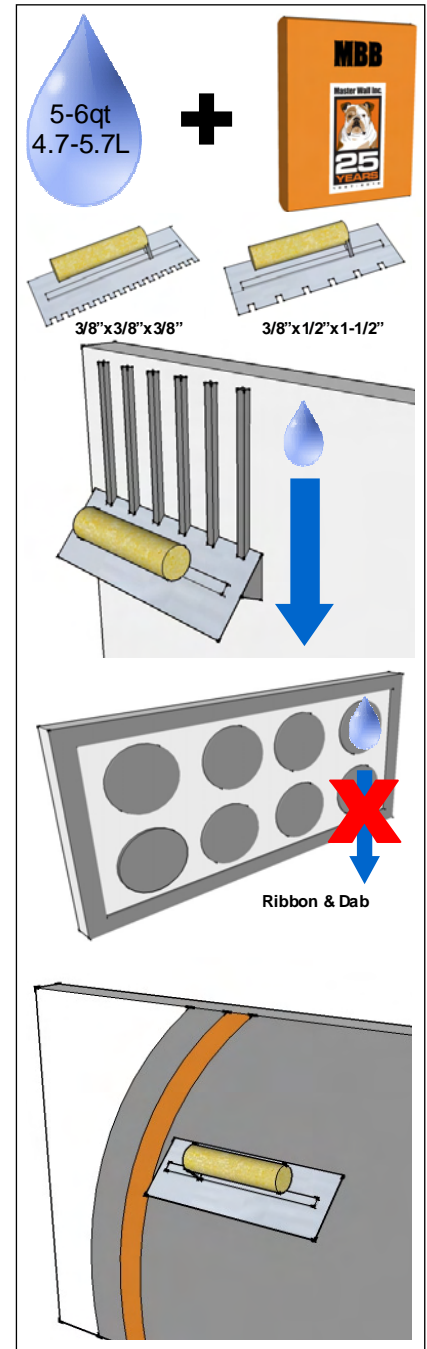
Others approved in writing

**For base coat application** – All imperfections in the insulation board must be rasped flush and any gaps in the insulation board must be filled with slivers of insulation. Apply the MBB Plus mixture over the entire surface of the insulation board in a thickness greater than that of the reinforcing fabric being used (approximately 1/16" (1.6 mm) for standard mesh and 3/32" (2.4 mm) for Ultra Mesh). Immediately embed the reinforcing fabric into the wet MBB Plus mixture and smooth from the center to the edge to avoid wrinkles. The reinforcing fabric must be continuous at all corners and lapped or abutted in accordance to Master Wall specifications. The color of the mesh shall not be visible but a slight mesh pattern may be visible. Leveling over Master Wall base coats or other approved substrates to 1/4" (6.4 mm) and can be tapered to a feather edge if needed.

**Clean Up**—Tools and equipment can be cleaned with soapy water while the MBB Plus is still wet.

### WARNING, THIS PRODUCT CONTAINS SILICA

If sanding or scraping are performed, ventilate work area and/or use a NIOSH/MSHA-approved respirator in accordance with our Safety Data Sheet.



Information contained in this product data sheet conforms to the standard detail recommendations and specifications for the installation of Master Wall Inc.® products and is presented in good faith. Master Wall Inc.® assumes no liability, expressed or implied as to the architecture, engineering, or workmanship of any project. This information may be concurrent with, or superseded by other applicable documents, such as specifications and details. Contact Master Wall Inc.® for the most current product information. ©2018 Master Wall Inc.®



PO Box 397 • Fortson • GA • 31808 • 800-755-0825 • Tech: 800-760-2861



# Guardian

Waterproof Base Coat & Adhesive

## Approved Substrates

Master Wall Base Coats  
Stucco  
Prepared & Base Coated  
Surfaces of Brick, Concrete,  
Masonry  
Exterior gypsum sheathing  
(ASTM C1396, C1177)  
Dens Glass Gold®  
GlasRoc®  
FiberBond®  
Gold Bond e2xp®  
Securock®  
Durock®  
PermaBase®  
Util-A-Crete®, ProTEC®,  
ProGUARD®  
Others approved in writing

**VOC: <1% by Weight**  
**Manufacture Locations:**  
**30058 • 77474 • 84651**  
**Recycled Content: 0%**

**Packaging: 5 gallon (19L) pail**

**Pail Weight: 30 lbs (13.6 kg)**

**Coverage (estimated)**

**1/8" (3.2 mm) sealer:**  
**45-50 sf (4-4.6 sm)**

**1/16" (1.6 mm) base coat :**  
**89-100 sf (8.3-9.3 sm)**

**Working Time: 1 hour @ room  
temperature**

**Drying Time: 12 hours @ room  
temperature**

**Application Range: 40°-110°F  
(5°-43°C)**

**Shelf Life: 2 years**

**To finish strong you need a Superior Base Coat that can not only protect but waterproof the surface. Premium Guardian is formulated with extremely flexible waterproof polymers and fibered for improved tensile strength. Guardian embeds easily into Master Wall® mesh as part of a weather protection strategy.**

## Application Procedure

**Job Conditions** - Air and substrate temperature for application of Guardian must be 40°F (5°C) or higher and must remain 40°F (5°C) or higher for a minimum of 24 hours. Provide temporary protection to protect the wall system from damage until permanent flashings, caps and sealants are installed. Store materials within prescribed temperature limits and out of direct sunlight. Working and drying times are based upon normal room temperature conditions and will vary with temperature and humidity.

**Preparation** - The substrate must be approved by Master Wall Inc.®, clean, dry, structurally sound and free of efflorescence, oil, grease, form release agents and curing compounds or anything that would affect bond. Painted surfaces are not acceptable and must be removed.

**Mixing** - Thoroughly stir Guardian using a heavy duty 1/2" (12.7 mm) drill at 400 - 500 rpm and a heavy duty mixing paddle. Add Type I or I-II Portland cement to the pail of Guardian and fill to the top (approximately 20 lbs, 9 kg) and mix to a homogenous consistency. Let the mixture stand for 3 to 5 minutes and then stir to a creamy consistency. Up to 18 ounces (0.5L) of clean, potable water may be added to a half pail to adjust workability. Do not over mix as faster setting or reduced working time can occur. Do not add accelerators or retarders to the Guardian mixture.

**Application** - Adhesive/Sealer application – Apply the Guardian mixture approximately 1/8" (3.2 mm) thick directly to the approved substrate using a stainless steel trowel. If used to adhere insulation, stipple the Guardian adhesive coat by pressing the trowel into the wet adhesive and then pulling it away from surface. Immediately apply the insulation board to the wet adhesive. Make sure that all edges of the insulation board are abutted tightly and that no Guardian mixture gets into the board joints. Do not allow the Guardian mixture to form a skin prior to placing the insulation board on the substrate.

**For base coat application** – All imperfections in the insulation board must be rasped flush and any gaps in the insulation board must be filled with slivers of insulation. Apply the Guardian mixture over the entire surface of the insulation board in a thickness greater than that of the reinforcing fabric being used (approximately 1/16" (1.6 mm) for standard mesh and 3/32" (2.4 mm) for Ultra Mesh). Immediately embed the reinforcing fabric into the wet Guardian mixture and smooth from the center to the edge to avoid wrinkles. The reinforcing fabric must be continuous at all corners and lapped or abutted in accordance to Master Wall specifications. The color of the mesh shall not be visible but a slight mesh pattern may be visible.

**For Sloped Surfaces**—Embed reinforcing mesh in Guardian as noted in the base coat application. If Guardian is used on the sloped surface only, consider a skim coat of the wall base coat to equalize finish absorption and color. Minimum recommended slope is 1:2 and maximum run is 18" (0.46m) with two-layers of Standard Mesh. Consult Master Wall and local code requirements for specifics.

**Clean Up**—Tools and equipment can be cleaned with soapy water while the Guardian is still wet.  
**Job Conditions**

**Limitations** - Guardian is not intended for water immersion.

**WARNING, THIS PRODUCT CONTAINS SILICA**

If sanding or scraping are performed, ventilate work area and/or use a NIOSH/MSHA-approved respirator in accordance with our Safety Data Sheet.

Information contained in this product data sheet conforms to the standard detail recommendations and specifications for the installation of Master Wall Inc.® products and is presented in good faith. Master Wall Inc.® assumes no liability, expressed or implied as to the architecture, engineering, or workmanship of any project. This information may be concurrent with, or superseded by other applicable documents, such as specifications and details. Contact Master Wall Inc.® for the most current product information.

© 2018 Master Wall Inc.®



**Master Wall Inc.®**  
*Building a Culture of Excellence*

[masterwall.com](http://masterwall.com)

**PO Box 397 • Fortson • GA • 31808 • 800-755-0825 • Tech: 800-760-2861**

## WeatherSTOP

To finish strong you need a leveling base coat with superior weather resistance to stop water before it enters your stucco or wall. Flexible, fibered WeatherSTOP remains flexible, weather resistant and embeds easily into Master Wall® mesh. WeatherSTOP is an alternative to a separate fluid applied water barrier.

### Coverage per pail

Embedding Single-layer of Mesh: 200-220 sf (18.6-20 sm)

Double Layer of Mesh: 66-200 sf (6-18.6 sm)

Coverage information

Coverage may vary depending upon application technique and surface conditions.

### Packaging/Shelf Life/Storage

Packaging: 5 gallon (19L) pail

Pail Weight: 60 lbs (27 kg)

Shelf Life: 2 years

Storage: Protect from extreme heat (90°F (32°C)), freezing and direct sunlight.

### Technical Data

ASTM C67 Freeze/Thaw: Pass

ASTM C297/E2134: 94 psi

ASTM E96: Vapor Permeable, >10 perms

ASTM E331 as drainage media: 97.7%

ASTM E2485 Freeze/Thaw: Pass

**Hazard:** This chemical is not considered hazardous according to the OSHA Hazard Communication Standard 2012 (29 CFR 1910.1200).

**VOC:** Less than 50 g/L.

## Features & Benefits

- Waterproof acrylic polymers
- Fibered for additional strength
- Stops water at the surface
- Highly flexible
- Excellent water holdout
- Protects stucco keeping it safe and dry
- Dry stucco does not support mold growth

Application Temperature: 40°-110°F (5°-43°C) • Working Time: 1 hour • Dry Time: 12 hours

at room temperature, working and drying time will vary with temperature and humidity

## Surface Preparation

The substrate must be approved by Master Wall Inc.®, clean, dry, structurally sound and free of efflorescence, oil, grease, form release agents and curing compounds or anything that would affect bond. Stucco should cure a minimum of 24 hours and concrete/masonry a minimum of 28 days before application. Painted surfaces are not acceptable and must be removed. Surface should be true to within 1/4" in 10'-0" (6 mm in 3 m) and clear of excessive fins and voids.

## WeatherSTOP

### Health & Safety

#### WARNING!

Causes eye and skin irritation.

#### Precautionary Statement

Wash hands thoroughly after handling. Wear protective gloves/protective clothing/eye protection/face protection.

#### FIRST AID MEASURES

**Eye Contact:** Immediately flush eyes with plenty of water for at least 15 to 20 minutes. Ensure adequate flushing of the eyes by separating the eyelids with fingers. Get immediate medical attention.

**Skin Contact:** Immediately wash skin with plenty of soap and water for 15 to 20 minutes, while removing contaminated clothing and shoes. Get medical attention if irritation develops or persists.

**Inhalation:** If inhaled, remove to fresh air. If not breathing, give artificial respiration or give oxygen by trained personnel. Seek immediate medical attention.

**Ingestion:** If swallowed, do NOT induce vomiting. Call a physician or poison control center immediately. Never give anything by mouth to an unconscious person.

Store locked up. Dispose of contents/container in accordance with Local, State, Federal and Provincial regulation.

**Spills:** Collect with suitable absorbent material such as cotton rags.

**Disposal:** Dispose of in accordance with local, state or federal regulations.

**Warning:** KEEP CONTAINER CLOSED WHEN NOT IN USE. KEEP OUT OF THE REACH OF CHILDREN. NOT FOR INTERNAL CONSUMPTION. FOR INDUSTRIAL USE ONLY. Consult the Safety Data Sheet (SDS) in the Products section at [masterwall.com](http://masterwall.com) for further health and safety information.

#### LIMITED WARRANTY

This product is subject to a written limited material or system warranty. Obtain a warranty from the Tech Support tab of our website. Refer to Specifications for more complete information on proper use and handling of this product.

### Approved Substrates

Master Wall® Base Coats

Exterior gypsum sheathing  
(ASTM C1396)

Glass Fiber Exterior Sheathing  
(ASTM C1177) Dens Glass  
Gold®, GlasRoc®  
FiberBond®, Gold Bond e2xp®,  
etc.

Cement Board Substrates  
Durock®, PermaBase®, ProTEC  
®, SelectCrete, Util-A-Crete®,  
etc.

Surfaces of Brick, Concrete,  
Masonry and Stucco

Others approved in writing

### Application Procedure

**Job Conditions** - Air and substrate temperature for application of WeatherSTOP must be 40°F (5°C) or higher and must remain 40°F (5°C) or higher for a minimum of 24 hours. Provide temporary protection to protect the wall system from damage until permanent flashings, caps and sealants are installed. Store materials within prescribed temperature limits and out of direct sunlight. Working and drying times are based upon normal room temperature conditions and will vary with temperature and humidity.

**Mixing** - Thoroughly stir WeatherSTOP using a heavy duty 1/2" (12.7 mm) drill at 400 - 500 rpm and a heavy duty mixing paddle. Pour half of the stirred WeatherSTOP into a clean plastic pail. Up to 12 ounces (0.35L) of clean, potable water may be added to adjust workability. Add 20lbs (9 kg) Type I or I-II Portland cement to the half pail of WeatherSTOP and mix to a homogenous consistency. Let the mixture stand for 3 to 5 minutes and then stir to a creamy consistency. Do not exceed 24 ounces (0.7L) per pail. Do not over mix as faster setting or reduced working time can occur. Do not add accelerators or retarders to the WeatherSTOP mixture.

### Application

**Water Barrier Application** – Apply the WeatherSTOP mixture over the entire surface of the approved substrate in a thickness of approximately 1/16" (1.6 mm).

**With Optional Mesh Application** – Apply the WeatherSTOP mixture over the entire surface of the approved substrate in a thickness greater than that of the reinforcing fabric being used (approximately 1/16" (1.6 mm) for Standard Mesh). Immediately embed the reinforcing fabric into the wet WeatherSTOP mixture and smooth from the center to the edge to avoid wrinkles. The reinforcing fabric must be continuous at all corners and lapped or abutted in accordance to Master Wall® Mesh data sheet requirements. Do not run mesh through control/expansion joints or accessories. The color of the mesh shall not be visible but a slight mesh pattern may be visible.

**Clean Up**—Tools and equipment can be cleaned with soapy water while the WeatherSTOP is still wet.

### Limitations:

A Master Wall® Superior, Superior Elastomeric Plus or other approved Master Wall® finish must be used over the WeatherSTOP.

Surfaces exposed to the weather must be sloped (6:12 minimum).

Under certain conditions efflorescence on the surface during the cure process. This can be removed with a white vinegar solution.

### WARNING, THIS PRODUCT CONTAINS SILICA

If sanding or scraping are performed, ventilate work area and/or use a NIOSH/MSHA-approved respirator in accordance with our Safety Data Sheet.

Information contained in this product data sheet conforms to the standard detail recommendations and specifications for the installation of Master Wall Inc.® products and is presented in good faith. Master Wall Inc.® assumes no liability, expressed or implied as to the architecture, engineering, or workmanship of any project. This information may be concurrent with, or superseded by other applicable documents, such as specifications and details. Contact Master Wall Inc.® for the most current product information. ©2021 Master Wall Inc.®



[masterwall.com](http://masterwall.com)

PO Box 397 • Fortson • GA • 31808 • 800-755-0825



**Master Wall Inc.**  
Building a Culture of Excellence

## PRODUCT DATA

### PRIMECOAT PRIMER

High quality exterior acrylic primer that helps solidify and protect the surface. Integrally colored Primecoat Primer helps make finishes brighter and deeper, reduces efflorescence and extends finish coverage rates. Suitable for priming Master Wall® base coats, new stucco, masonry and concrete that has a pH of 13 or less.

#### FEATURES & BENEFITS

- Tintable sealer/primer with good hiding power
- Hot prime capable for pH 13 or less
- Reduces finish absorption for improved aesthetics and reduced finish color variations
- Recommended for extreme color changes, under very dark, vivid or bright topcoats or when top tier finishing is specified
- Extends finish coverage, required when spraying Superior Finishes and some specialty finishes
- 100% Acrylic Polymers for durability
- Water-based - easy clean up with water

Application Temperature: 40°-110°F (5°-43°C)

Dry to touch: 1 hour

Recoat Time: 2 hours

Dry Time: 12 hours at room temperature, working and drying time will vary with temperature and humidity.

#### JOB CONDITIONS

Air and substrate temperature for application of Primecoat must be 40°F (5°C) or higher and must remain 40°F (5°C) or higher for a minimum of 24 hours. Provide temporary protection to protect the wall system from damage until permanent flashings, caps and sealants are installed. Store materials within prescribed temperature limits and out of direct sunlight. Working and drying times are based upon normal room temperature conditions and will vary with temperature and humidity.

#### PREPARATION

The substrate must be approved by Master Wall Inc.®, clean, dry, structurally sound and free of efflorescence, oil, grease, form release agents and curing compounds or anything that would affect bond. Concrete and masonry should be cured a minimum of 28 days, stucco cured a minimum of 7-14 days or surfaces verified to have a pH less than 13.

#### Coverage per pail (sf/sm)\*

1000-1200 sf/pail (93-112 sm)\*

*\*All coverage is approximate and depend upon substrate, details and individual application*

#### Packaging/Shelf Life/Storage

Packaging: 5 gallon (19L) pail Pail

Shelf Life: 2 years

Storage: Protect from extreme heat - 90°F (32°C), freezing and direct sunlight.

#### Technical Data

Water Vapor Transmission (perms), ASTM E96 Vapor Permeable

#### Substrate Recommendations

Concrete – If preparing for a textured or specialty finish, all projections must be removed and any voids filled with a Master Wall® base coat as needed to provide an appropriate surface.

Masonry – If preparing for a textured or specialty finish, skim coat with a Master Wall® base coat to achieve a smooth level surface. If joints are not struck flush, multiple coats may be required. Contact Master Wall for more information.

Stucco – If additives were used in the stucco, it is recommended that a test patch be made to evaluate bond strength of the Primecoat to the stucco.

Master Wall® Base Coats or Finishes, Previously Painted Surfaces, Cement Composition Siding

Install/Apply and prepare according to published guidelines. Surfaces should be clean, dry, cured and ready to receive coatings.

## APPLICATION PROCEDURE

*Mixing* - Thoroughly stir Primecoat into a homogeneous consistency. Small amounts of clean, potable water may be added to obtain a workable consistency. Do not over mix. Do not exceed 24 ounces (0.7L) of water per pail. Do not add accelerators or retarders to Primecoat.

*Application* - Primecoat can be applied by brush, roller, or airless spray equipment. When using a roller, a maximum 3/4" (19 mm) nap is recommended. Apply Primecoat in an even, continuous coat of about 3 mils, maintaining a wet edge.

*Airless Spray Application* - Pressure 2000 p.s.i., Tip .015- to .019 inch. Spray in a consistent manner or backroll after spraying for a consistent application.

*Limitations* - Primecoat is not intended for use as the final finish coat over Master Wall base coats or other approved substrates.

## FOR PROFESSIONAL RESULTS

Apply coatings away from direct sunlight. Cold joints or color variations can occur if the finish dries too quickly. Under certain conditions dark colors may show efflorescence on the surface during the cure process.

Surfaces exposed to the weather must be sloped (6:12 minimum). Use of dark colors in high temperature climates can affect the performance of the system, especially EIFS and areas may need to be limited.

## CLEAN UP

Tools and equipment can be cleaned with soapy water when Primecoat is wet.

**Hazard:** This chemical is not considered hazardous according to the OSHA Hazard Communication Standard 2012 (29 CFR 1910.1200).

**VOC:** Less than 50 g/L.

### Approved Substrates

Master Wall® Base Coats  
Stucco  
Brick  
Masonry  
Concrete  
Interior Drywall  
Previously painted surfaces with bond test  
Others approved in writing

**Warning:** KEEP CONTAINER CLOSED WHEN NOT IN USE. KEEP OUT OF THE REACH OF CHILDREN. NOT FOR INTERNAL CONSUMPTION. FOR INDUSTRIAL USE ONLY.

Consult the Safety Data Sheet (SDS) in the Products section at [masterwall.com](http://masterwall.com) for further health and safety information.

### LIMITED WARRANTY

This product is subject to a written limited material or system warranty. Obtain a warranty from the Tech Support tab of our website. Refer to Specifications for more complete information on proper use and handling of this product.

Information contained in this product data sheet conforms to the standard detail recommendations and specifications for the installation of Master Wall Inc.® products and is presented in good faith. Master Wall Inc.® assumes no liability, expressed or implied as to the architecture, engineering, or workmanship of any project. This information may be concurrent with, or superseded by other applicable documents, such as specifications and details. Contact Master Wall Inc.® for the most current product information. ©2022 Master Wall Inc.®



**Master Wall Inc.®**  
Building a Culture of Excellence

## PRODUCT DATA

### SUPERIOR FINISHES

To finish strong you need a Superior Finish. Master Wall® finishes are crafted with one of the highest 100% acrylic polymer contents in our industry. This translates to extra durability, lower life-cycle maintenance and a longer lasting finish.

### FEATURES & BENEFITS

- 100% Acrylic Polymers for durability
- Dirt Pickup Resistant (DPR) Polymer Formulation
- Quartz or Marble aggregate available
- 64 Standard Colors
- Custom color matching available
- DuroTone colorfast pigments, Excel mildew enhancement, Silicone Coat additive available
- Vapor Permeable - resists blistering and allows trapped water vapors to pass
- Low VOC—Suitable for Interior Use
- Water Based - easy clean up with water

Application Temperature: 40°-110°F (5°-43°C)

Working Time: 1/4 hr

Set Time: 8-12 hrs

Dry Time: 48-72 hrs at room temperature, working and drying time will vary with temperature and humidity.

### JOB CONDITIONS

Air and substrate temperature for application of Superior Finishes must be 40°F (5°C) or higher and must remain 40°F (5°C) or higher for a minimum of 24 hours. Provide temporary protection to protect the wall system from damage until permanent flashings, caps and sealants are installed. Store materials within prescribed temperature limits and out of direct sunlight. High temperatures will reduce working times, Low temperatures and/or high humidity and pigment loading will extend working, set and dry times.

### PREPARATION

The substrate must be approved by Master Wall Inc.®, clean, dry, structurally sound and free of efflorescence, oil, grease, form release agents and curing compounds or anything that would affect bond. Painted surfaces are not acceptable and must be removed. Concrete and surfaces should cure for a minimum of 28 days. Stucco should be cured until clean, dry and hard—typically 14 days with a pH of 10 or less (13 or less if Primecoat Primer is used).

Interior drywall should be finished and made ready for paint. Prime surfaces with Primecoat/Sanded Primecoat primer prior to finishing.

### Coverage per pail (sf/sm)\*

- Perfect Swirl 2.0, 120-150 (11-14)
- Fine Sand 1.0, 160-170 (15-15.8)
- Medium Sand 1.5, 130-150 (12-14)
- Versatex 0.5, Varies with Texture

*\*All coverage is approximate and depend upon substrate, details and individual application*

### Packaging/Shelf Life/Storage Packaging:

- 5 gallon (19L) pail Pail

Shelf Life: 2 years

Storage: Protect from extreme heat (90°F, 32°C), freezing and direct sunlight.

### Technical Data

ASTM B117 Salt Spray Resistance - Pass ASTM

C67 Freeze/Thaw - Pass

ASTM C297 Tensile Bond - 30 psi minimum

ASTM D968 Abrasion Resistance - Pass 500L

ASTM D2247/E2570 Water Resistance - Pass

ASTM D3273 Mildew Resistance - Pass 28 Days

ASTM E84 Surface Burning - Pass, FS=0, SD=0

ASTM E 96 Vapor Permeability - Pass, 12 perms, vapor open

ASTM E108 Flame Propagation - Pass

ASTM E2485/2570 (formerly EIMA 101.01)

Impact Resistance - Pass

ASTM G23/G154/G155 Accelerated Weathering - Pass 2000 Hours

ASTM G53 Accelerated Weathering - Pass 2000 Hours

## APPLICATION PROCEDURE

Base Coats - Must be flat, dry hard, and free of efflorescence. Master Wall® base coats must cure a minimum of 12 hours before application of Superior Finish. Substrates of brick, masonry or concrete should be leveled smooth using either Master Wall® base coats or stucco.

Mixing - Thoroughly stir Superior Finish using a heavy duty 1/2" drill at 400 - 500 rpm and a heavy duty mixing paddle. Small amounts of clean, potable water may be added to obtain a workable consistency. To avoid color variations, add the same amount of water to each pail. Do not exceed 24 ounces (0.7L) of water per pail of finish.

Application - Apply a uniform thickness (about 1/16", 1.6 mm) of Superior Finish to the substrate using a stainless steel trowel. Spread evenly and then scrape the finish coat down to a thickness no greater than the largest aggregate in the material. Immediately float the finish coat using a plastic float to the desired texture. Always maintain a wet edge to achieve uniformity of texture and color. Allow the finish to fully dry and set before exposure to inclement weather.

## FOR PROFESSIONAL RESULTS

Apply finish coats away from direct sunlight. Cold joints or color variations can occur if the finish dries too quickly. Priming stucco surfaces with Primecoat/Sanded Primecoat evens out finish absorption and should be strongly considered and specified for dark colored finishes, especially those using Ultra Deep Base (UDB) tint base and over stucco to avoid efflorescence blush. Under certain conditions dark colors may show efflorescence on the surface during the cure process.

Surfaces exposed to the weather must be sloped (6:12 minimum). Use of dark colors in high temperature climates can affect the performance of the system, especially EIFS and areas may need to be limited.

Deep, intense colors should be specified with DuroTone pigments to maintain colorfastness longer. Verify specialty colors with your Master Wall® Distributor. Finishes are intended for the approved substrates listed above and should not be applied directly to gypsum board or insulation board products.

## CLEAN UP

Tools and equipment can be cleaned with soapy water while the Superior Finish is still wet.

**Hazard:** This chemical is not considered hazardous according to the OSHA Hazard Communication Standard 2012 (29 CFR 1910.1200).

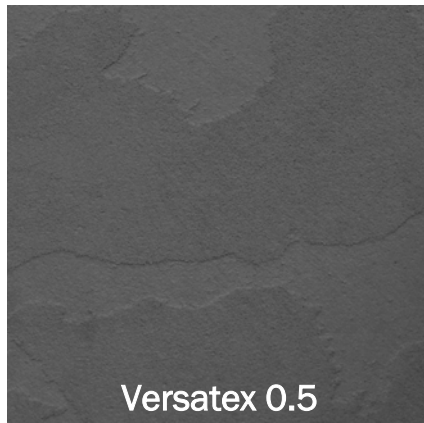
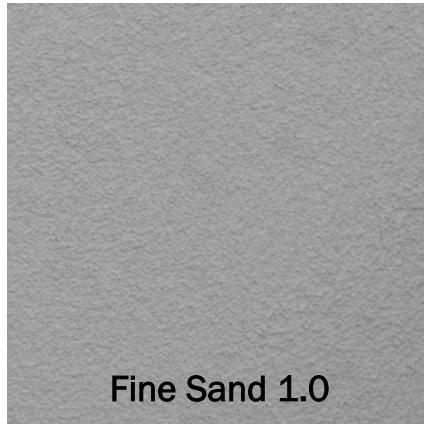
**VOC:** Less than 50 g/L.

See Superior Finishes for other technical properties

### Approved Substrates

Master Wall® Base Coats  
Cemplaster Fiberstucco, One Coat Stucco (OCS), Primecoat Primer surfaces, ASTM C926 Stucco

Prepared & Base Coated Surfaces of:  
Brick, Concrete, Masonry  
Others approved in writing



Information contained in this product data sheet conforms to the standard detail recommendations and specifications for the installation of Master Wall Inc.® products and is presented in good faith. Master Wall Inc.® assumes no liability, expressed or implied as to the architecture, engineering, or workmanship of any project. This information may be concurrent with, or superseded by other applicable documents, such as specifications and details. Contact Master Wall Inc.® for the most current product information. ©2022 Master Wall Inc.®



**Health & Safety**

**WARNING!**

Causes eye and skin irritation.  
 Precautionary Statement  
 Wash hands thoroughly after handling. Wear protective gloves/protective clothing/eye protection/face protection.

**FIRST AID MEASURES**

**Eye Contact:** Immediately flush eyes with plenty of water for at least 15 to 20 minutes. Ensure adequate flushing of the eyes by separating the eyelids with fingers. Get immediate medical attention.

**Skin Contact:** Immediately wash skin with plenty of soap and water for 15 to 20 minutes, while removing contaminated clothing and shoes. Get medical attention if irritation develops or persists.

**Inhalation:** If inhaled, remove to fresh air. If not breathing, give artificial respiration or give oxygen by trained personnel. Seek immediate medical attention.

**Ingestion:** If swallowed, do NOT induce vomiting. Call a physician or poison control center immediately. Never give anything by mouth to an unconscious person.

**Store locked up.** Dispose of contents/container in accordance with Local, State, Federal and Provincial regulation.

**Spills:** Collect with suitable absorbent material such as cotton rags.

**Disposal:** Dispose of in accordance with local, state or federal regulations.

**Warning:** KEEP CONTAINER CLOSED WHEN NOT IN USE. KEEP OUT OF THE REACH OF CHILDREN. NOT FOR INTERNAL CONSUMPTION. FOR INDUSTRIAL USE ONLY.

Consult the Safety Data Sheet (SDS) in the Products section at masterwall.com for further health and safety information.

**LIMITED WARRANTY**  
 This product is subject to a written limited material or system warranty. Obtain a warranty from the Tech Support tab of our website. Refer to Specifications for more complete information on proper use and handling of this product.



**Master Wall Inc.®**  
Building a Culture of Excellence

## PRODUCT DATA

### SUPERIOR ELASTOMERIC PLUS FINISHES

To finish strong you need a Superior Elastomeric Finish that can bridge minor hairline cracks common in stucco. Master Wall® Superior Elastomeric Plus finishes have one of the highest 100% acrylic polymer contents in our industry for extra flexibility yet are still breathable.

#### FEATURES & BENEFITS

- 100% Acrylic Polymers for durability
- Dirt Pickup Resistant (DPR) Polymer Formulation
- Quartz or Marble aggregate available
- 64 Standard Colors
- Custom color matching available
- DuroTone colorfast pigments, Excel mildew enhancement, Silicone Coat additive available
- Vapor Permeable - resists blistering and allows trapped water vapors to pass
- Low VOC—Suitable for Interior Use
- Water Based - easy clean up with water

Application Temperature: 40°-110°F (5°-43°C)

Working Time: 1/4 hr

Set Time: 8-12 hrs

Dry Time: 48-72 hrs at room temperature, working and drying time will vary with temperature and humidity.

#### JOB CONDITIONS

Air and substrate temperature for application of Superior Elastomeric Plus Finishes must be 40°F (5°C) or higher and must remain 40°F (5°C) or higher for a minimum of 24 hours. Provide temporary protection to protect the wall system from damage until permanent flashings, caps and sealants are installed. Store materials within prescribed temperature limits and out of direct sunlight. High temperatures will reduce working times, Low temperatures and/or high humidity and pigment loading will extend working, set and dry times.

#### PREPARATION

The substrate must be approved by Master Wall Inc.®, clean, dry, structurally sound and free of efflorescence, oil, grease, form release agents and curing compounds or anything that would affect bond. Painted surfaces are not acceptable and must be removed. Concrete and surfaces should cure for a minimum of 28 days. Stucco should be cured until clean, dry and hard—typically 14 days with a pH of 10 or less (13 or less if Primecoat Primer is used).

Interior drywall should be finished and made ready for paint. Prime surfaces with Primecoat/Sanded Primecoat primer prior to finishing.

#### Coverage per pail (sf/sm)\*

- Perfect Swirl 2.0, 120-150 (11-14)
- Fine Sand 1.0, 160-170 (15-15.8)
- Medium Sand 1.5, 130-150 (12-14)
- Versatex 0.5, Varies with Texture

*\*All coverage is approximate and depend upon substrate, details and individual application*

#### Packaging/Shelf Life/Storage Packaging:

- 5 gallon (19L) pail Pail

Shelf Life: 2 years

Storage: Protect from extreme heat (90°F, 32°C), freezing and direct sunlight.

#### Technical Data

Water Vapor Transmission: >10 perms

Elongation: 307% (Neat Film)

Tensile Bond @ Break: 84 psi (Neat Film)

Mildew Resistance, ASTM D3273: Pass

Solids by Weight: 59.5 (Neat Film)

Solids by Volume: 45.4 (Neat Film)

ASTM B117 Salt Spray Resistance - Pass ASTM

C67 Freeze/Thaw - Pass

ASTM D968 Abrasion Resistance - Pass 500L

ASTM D3273 Mildew Resistance - Pass 28 Days

ASTM E84 Surface Burning - Pass, FS=0, SD=0

ASTM G23/G154/G155 Accelerated Weathering

- Pass 2000 Hours

ASTM G53 Accelerated Weathering - Pass 2000

Hours

## APPLICATION PROCEDURE

Base Coats - Must be flat, dry hard, and free of efflorescence. Master Wall® base coats must cure a minimum of 12 hours before application of Superior Elastomeric Plus Finish. Substrates of brick, masonry or concrete should be leveled smooth using either Master Wall® base coats or stucco.

Mixing - Thoroughly stir Superior Elastomeric Plus Finish using a heavy duty 1/2" drill at 400 - 500 rpm and a heavy duty mixing paddle. Small amounts of clean, potable water may be added to obtain a workable consistency. To avoid color variations, add the same amount of water to each pail. Do not exceed 24 ounces (0.7L) of water per pail of finish.

Application - Apply a uniform thickness (about 1/16", 1.6 mm) of Superior Elastomeric Plus Finish to the substrate using a stainless steel trowel. Spread evenly and then scrape the finish coat down to a thickness no greater than the largest aggregate in the material. Immediately float the finish coat using a plastic float to the desired texture. Always maintain a wet edge to achieve uniformity of texture and color. Allow the finish to fully dry and set before exposure to inclement weather.

## FOR PROFESSIONAL RESULTS

Apply finish coats away from direct sunlight. Cold joints or color variations can occur if the finish dries too quickly. Priming stucco surfaces with Primecoat/Sanded Primecoat evens out finish absorption and should be strongly considered and specified for dark colored finishes, especially those using Ultra Deep Base (UDB) tint base and over stucco to avoid efflorescence blush. Under certain conditions dark colors may show efflorescence on the surface during the cure process.

Surfaces exposed to the weather must be sloped (6:12 minimum). Use of dark colors in high temperature climates can affect the performance of the system, especially EIFS and areas may need to be limited.

Deep, intense colors should be specified with DuroTone pigments to maintain colorfastness longer. Verify specialty colors with your Master Wall® Distributor. Finishes are intended for the approved substrates listed above and should not be applied directly to gypsum board or insulation board products.

## CLEAN UP

Tools and equipment can be cleaned with soapy water while the Superior Elastomeric Plus Finish is still wet.

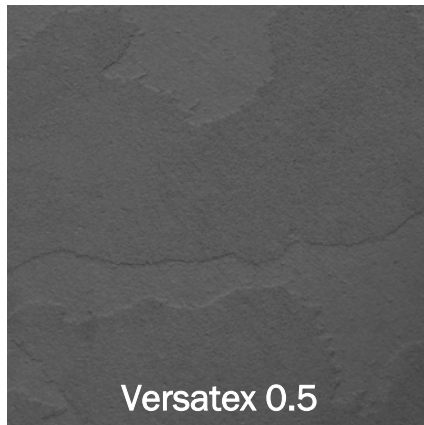
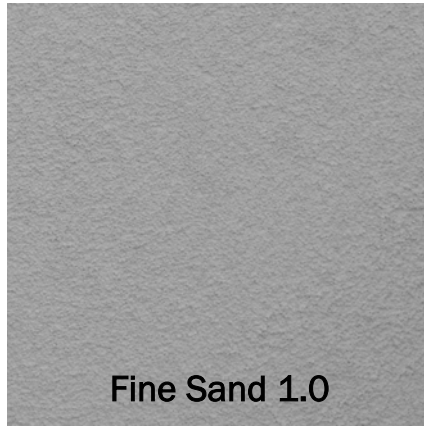
**Hazard:** This chemical is not considered hazardous according to the OSHA Hazard Communication Standard 2012 (29 CFR 1910.1200).

**VOC:** Less than 50 g/L.

### Approved Substrates

Master Wall® Base Coats  
Cemplaster Fiberstucco, One Coat Stucco (OCS), Primecoat Primer surfaces, ASTM C926 Stucco

Prepared & Base Coated Surfaces of:  
Brick, Concrete, Masonry  
Others approved in writing



Information contained in this product data sheet conforms to the standard detail recommendations and specifications for the installation of Master Wall Inc.® products and is presented in good faith. Master Wall Inc.® assumes no liability, expressed or implied as to the architecture, engineering, or workmanship of any project. This information may be concurrent with, or superseded by other applicable documents, such as specifications and details. Contact Master Wall Inc.® for the most current product information. ©2022 Master Wall Inc.®



**Health & Safety**

**WARNING!**

Causes eye and skin irritation. Precautionary Statement Wash hands thoroughly after handling. Wear protective gloves/protective clothing/eye protection/face protection.

**FIRST AID MEASURES**

**Eye Contact:** Immediately flush eyes with plenty of water for at least 15 to 20 minutes. Ensure adequate flushing of the eyes by separating the eyelids with fingers. Get immediate medical attention.

**Skin Contact:** Immediately wash skin with plenty of soap and water for 15 to 20 minutes, while removing contaminated clothing and shoes. Get medical attention if irritation develops or persists.

**Inhalation:** If inhaled, remove to fresh air. If not breathing, give artificial respiration or give oxygen by trained personnel. Seek immediate medical attention.

**Ingestion:** If swallowed, do NOT induce vomiting. Call a physician or poison control center immediately. Never give anything by mouth to an unconscious person.

**Store locked up.** Dispose of contents/container in accordance with Local, State, Federal and Provincial regulation.

**Spills:** Collect with suitable absorbent material such as cotton rags.

**Disposal:** Dispose of in accordance with local, state or federal regulations.

**Warning:** KEEP CONTAINER CLOSED WHEN NOT IN USE. KEEP OUT OF THE REACH OF CHILDREN. NOT FOR INTERNAL CONSUMPTION. FOR INDUSTRIAL USE ONLY.

Consult the Safety Data Sheet (SDS) in the Products section at masterwall.com for further health and safety information.

**LIMITED WARRANTY**

This product is subject to a written limited material or system warranty. Obtain a warranty from the Tech Support tab of our website. Refer to Specifications for more complete information on proper use and handling of this product.