

Project Submittal Package



Project:

Location:

Architect:

General Contractor:

Applicator:



Master Wall Inc.®



[System Data Sheets](#) [Product Data Sheets](#) [Sample Warranty](#)
[Specifications](#) [Details](#) [Web Link \(click here\)](#)

PO Box 397

Fortson

GA

31808

800-755-0825

masterwall.com



Master Wall Inc.
Building a Culture of Excellence

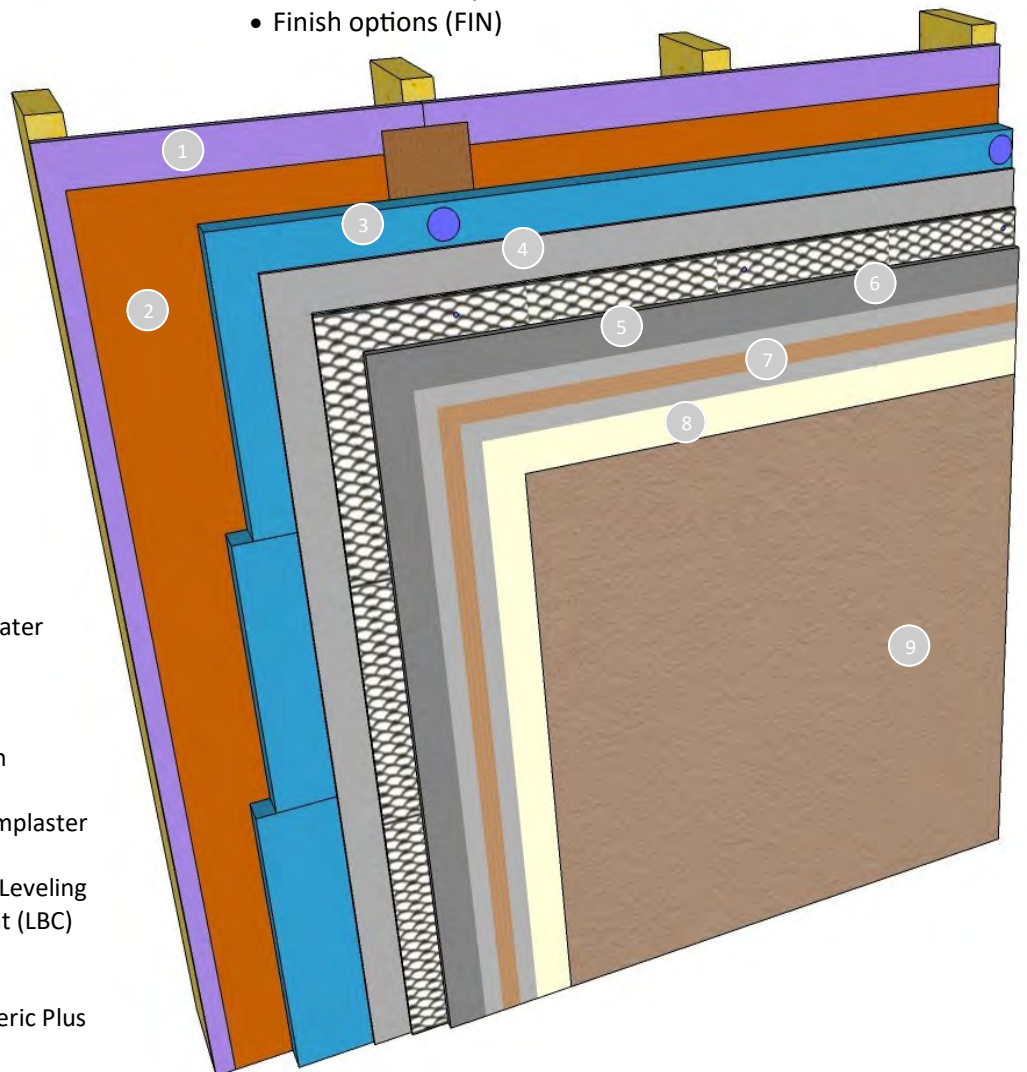
09 24 00/09 25 00

CEMPLASTER FIBERSTUCCO SYSTEM

Master Wall® Cemplaster Fiberstucco System is an engineered, fiber-reinforced stucco using our Cemplaster Fiberstucco or Cobrand stucco products in an easy to use packaged assembly. Available in concentrate and ready versions, it offers improved durability compared to traditional stucco with easier application, better product consistency and technical support throughout the application process. Cemplaster Fiberstucco is available as a basic system (stucco & finish) or it can be upgraded with additives, rainscreen mats, continuous insulation leveling base coats and finishes.

Features & Benefits

- Premium fibered stucco system with a warranty
- Variable warranty options: choose popular additions to customize your system or let us design one for you
- Up to 20-year limited labor/material warranties available
- Options
 - Water barriers (WRB)
 - Continuous Insulation (CI)
 - Drainage options (DRS)
 - Cemplaster Fiberstucco options from 3/8" to 7/8" thick (CFS)
 - Reinforcement options (SRM, LBC)
 - Finish options (FIN)



1. Framing & Sheathing (by others)
2. SuperiorShield Rollershield Air/Water Barrier or other approved WRB
3. Continuous Insulation (CI) option
4. Drainage Spacer (DRS) option
5. Cemplaster Fiberstucco (CFS) with reinforcement
6. Stucco Additive (SA) option in Cemplaster mix option
7. Surface Reinforcing Mesh (SRM), Leveling Base Coat or Reinforced Base Coat (LBC) option
8. Primecoat Primer (PRIME) option
9. Superior Finish, Superior Elastomeric Plus or Specialty Finish (FIN) options

Choose your system and your warranty, or let us custom design one for you

When you improve your stucco you improve your warranty. Choose the options you want for your project, or give us a call and we will custom design a system for you. Warranties add up and the extensions in years are noted in **orange**.

Weather Resistive Barriers (WRB), Continuous Insulation (CI) and Drainage Spacers (DRS)

- WRB01** 2- ASTM D226 Asphalt Felt or other code required minimum (minimum over sheathing) **(0 Years)**
- WRB02** Tyvek® StuccoWrap® or similar with 1-layer of ASTM D226 Asphalt Felt (over sheathing) **(0 Years)**
- WRB03** Master Wall Rollershield with 1-layer of ASTM D226 Asphalt Felt (over sheathing) **(+5 Years)**
- WRB04** Master Wall Rollershield (over concrete or masonry, slip sheet and lath required) **(+5 Years)**
- CI01-03** Continuous Insulation: Expanded, Extruded, Polyisocyanurate, Mineral Wool **(0 Years)**
- CI04** External Insulation **(0 Years)**
- DRS00** No Drainage Spacer **(0 Years)**
- DRS01** Drainage Mat: Spacer Type **(0 Years)**
- DRS02** Rainscreen: Cosella-Dörken Products, Inc. Delta® -Dry, Delta® -Dry Plus or Keene Driwall™ Rainscreen 020-1 **(+1Year)**

Cemplaster Fiberstucco Warranty Program Products (CFS)

- CFS01** Master Wall Cemplaster Fiberstucco* with 17 or 20 ga. woven wire fabric or STRUCTALATH III reinforcement, 3/8" thick **(+2 Years)**
 - CFS02** Master Wall Cemplaster Fiberstucco* direct to Masonry/Concrete (no Rollershield), 3/8"-1/2" thick **(+3 Years)**
 - CFS03** Master Wall Cemplaster Fiberstucco* with 2.5#/sy self-furring, MW Fibalath™ or STRUCTA Twin Trac reinforcement, 1/2" thick **(+3 Years)**
 - CFS04** Master Wall Cemplaster Fiberstucco* with 3.4#/sy self-furring, MW Fibalath™ or STRUCTA Mega Lath reinforcement, 3/4" thick **(+4 Years)**
 - CFS05** Master Wall Cemplaster Fiberstucco* with 3.4#/sy self-furring reinforcement, 7/8" thick **(+4 years)**
- *Cemplaster Fiberstucco available with certain QUIKRETE® and WESTERN Blended products as part of our warranty program.*

Stucco Additives (SA)

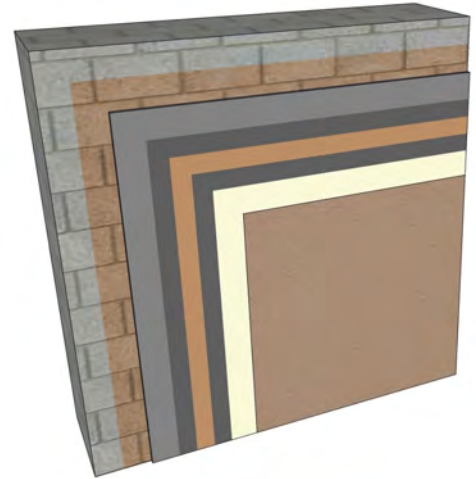
- SA00** No Stucco Additives **(0 Years)**
- SA01** Master Wall Stucco Ad Liquid, 3 qt per mix of CFS Concentrate, 1 qt per bag of Ready CFS **(+1 Year)**
- SA02** Master Wall Stucco Ad Liquid, 2 gal per mix of CFS Concentrate, 3 quarts per bag of Ready CFS **(+2 Years)**
- SA03** Master Wall Stucco Ad Liquid, 5 gal per mix of CFS Concentrate, 1-1/2 gal per bag of Ready CFS **(+3 Years)**

Surface Reinforcing Mesh (SRM) & Leveling Base Coats (LBC)

- SRM00** No Surface Reinforcing Mesh **(0 Years)**
- SRM01** Bulltec Reinforcing Mesh embedded into wet stucco brown coat **(+1 Year)**
- LBC00** No Leveling Base Coat **(0 Years)**
- LBC01** F&M, F&M Plus, MBB, MBB Plus, Guardian or WeatherSTOP Skim Coat **(+1 Year)**
- LBC02** F&M, F&M Plus, MBB, MBB Plus, Guardian or WeatherSTOP Skim Coat with Master Wall Standard Reinforcing or Bulltec Mesh **(+2 Years)**

Primers (PRIME), Finish Additives (FA), Finish Options (FIN)

- PRIME00** No Primer **(0 Years)**
- PRIME01** Primecoat or Sanded Primecoat tinted primer **(+1 Year)**
- FIN01** Superior Finish/Specialty Finish **(+1 Year)**
- FA01** Excel Additive (to any finish) **(+0.5 Year)**
- FA02** Silicone Coat (to any finish) **(+0.5 Year)**
- FIN02** Superior Elastomeric Plus Finish **(+3 Years)**



Direct application of Cemplaster Fiberstucco to CMU using BA57 bonding agent, reinforced WeatherSTOP waterproof base coat, Primecoat and Superior Finish

Cemplaster Stucco

Sample Labor & Material Limited Warranty

Master Wall Inc.® warrants the properly designed and installed Cemplaster Stucco System and materials for terms noted above from the date of installation. Master Wall Inc.'s exclusive liability under this warranty is to supply replacement materials and labor or corrective procedures, if it is shown that the materials supplied by Master Wall Inc., were defective when installed by the Master Wall Inc. certified applicator. Remedies shall be solely determined by Master Wall Inc. and no other warranties are expressed or implied. For a valid warranty, the system and products must be installed in accordance with Master Wall Inc.'s written recommendations, specifications, details, bulletins and other project-specific written recommendations. Master Wall Inc. must be notified in writing within 10 business days of the original discovery of the defect.

Master Wall Inc., is not responsible for structural conditions, design conditions beyond those noted in our literature, architecture, engineering or workmanship of any project. Cemplaster Stucco may have hairline cracks, spalling, fastener popping or efflorescence, which are not considered product defects. Materials must be properly stored and applied in a timely manner. Workmanship, aesthetics and installation are beyond the scope of this warranty as are any deviations from Master Wall Inc. Documents not specifically approved in writing.

Abuse, misuse, excessive weather or environmental conditions beyond what the products or systems have been tested, designed or approved for is expressly limited. Certain colors with organic pigments are less fade-resistant than others. The building, system and products must be properly maintained in accordance with Master Wall Inc., documents, local environmental conditions and good building practices. In no case is Master Wall Inc. responsible for incidental and consequential damages.

This warranty becomes effective only when all bills for the components of the system have been paid.

Except as stated, Master Wall, Inc., expressly disclaims any warranty of merchantability or fitness for a particular purpose. The above remedies are to be deemed exclusive.

This is a sample of the warranty and is not the final warranty. A final warranty must be requested to be valid.

Compliance Standards

UES Evaluation Report 384, Rollersshield Water Barrier, Evaluation Report CCRR-0215, Master Wall Cemplaster Fiberstucco, Evaluation Report ER-0821, Cemplaster Fiberstucco L, QUIKRETE® Stucco Cobrand in Warranty Program, ER-0455, Western Blended Stucco Cobrand in Warranty Program, ER-0821, ASTM C67, ASTM C109, ASTM E330, ASTM G26, ASTM E84, ASTM E119, ASTM E136, NFPA 285

Information contained in this product data sheet conforms to the standard detail recommendations and specifications for the installation of Master Wall Inc.® products and is presented in good faith. Master Wall Inc.® assumes no liability, expressed or implied as to the architecture, engineering, or workmanship of any project. This information may be concurrent with, or superseded by other applicable documents, such as specifications and details. Contact Master Wall Inc.® for the most current product information. ©2022 Master Wall Inc.®



PRODUCT AND SYSTEM TESTING



Master Wall Inc.
Building a Culture of Excellence



MASTER WALL® SYSTEMS SPECIFICATION FACT SHEET

- Manufacturer of EIFS, Stucco and Coatings since 1987
- Committed and focused specifically on our industry; privately held and American owned.
- Pioneer in CIFS® (Continuous Insulation and Finish Systems)
- Leader in specialty finishes; CIFS® Wood Grain, CIFS® Brick, Hydrophobic Finishes, Metallics, SuperiorCote coatings
- AWCI Certified EIFS Professional (CEP) accredited Sales and Technical Force
- AIA MasterSpec listed, AIA CES Registered Provider
- Industry Leadership
 - EIMA (EIFS Industry Members Association) – Manufacturer Member and Current President
 - NOCSA (National One Coat Stucco Association) – Manufacturer Member and Current President
 - SMA (Stucco Manufacturer's Association) – Manufacturer Member and Board Member
 - ABAA (Air Barrier Association of America) – Manufacturer Member
 - AWCI (Association of the Wall and Ceiling Industry) – Member
 - FWCCA (Florida Wall & Ceiling Contractors Association) – Member
- Code Compliant EIFS, CIFS® Stucco and Air Barrier Systems (ICC, Miami Dade and Florida Building Code recognized systems)
- Full-service product support including sales and technical aspects of your project
- Labor and Material Limited Warranties exceeding other manufacturers ranging up to 20 years including Single-source envelope warranties with approved Sealant manufacturers.
- DuroTone High Performance Tint Pigments for Improved Color Retention (5-year fade warranty)
- Manufacturing strategically located in Stonecrest GA, Brookshire TX and Payson UT
- Nationwide distributor network that serves most major markets



Master Wall Inc. continuously tests our products and systems to meet the most current building codes.

FIRE TESTING			
Test	Test Method	Criteria	Results
Fire Resistance	ASTM E119	No effect on the fire resistance of a rated wall assembly	See Technical Bulletin MW#168-030111 for assemblies
Ignitability	NFPA 268 (BOCA 99/1407.0)	No ignition at 12.5 kw/m ² at 20 minutes	Pass
Intermediate Multi-Story Fire Test	NFPA 285 (UBC 26-9)	<ol style="list-style-type: none"> 1. Resist flame propagation over the exterior surface 2. Resist vertical spread of flame within combustible core/component of panel from one story to the next 3. Resist vertical spread of flame over the interior surface from one story to the next 4. Resist lateral spread of flame from the compartment of fire origin to adjacent spaces 	Pass
Surface Burning Characteristics— Base Coat, Mesh and Finish	ASTM E84	All components shall have a: Flame Spread < 25 Smoke Developed < 450	Flame Spread = 0 Smoke Developed = 0
Surface Burning Characteristics— Rollershield	ASTM E84	All components shall have a: Flame Spread < 25 Smoke Developed < 450	Flame Spread = 5 Smoke Developed = 5
Heat and Smoke Release Rates for Rollershield Air/ Water Barrier	ASTM E1354, IBC Section 1403.5, Exception 2 Requirements	Peak Heat Release Rate <150 kWm ² Total Heat Release Rate <20 MJ/m ² , Effective Heat of Combustion <18 MJ/kg	RS: Peak Heat Release Rate = 32 kWm ² , Total Heat Release Rate = 3.6 MJ/m ² , Effective Heat of Combustion = 2.5 MJ/kg, VB: Peak Heat Release Rate = 336 kWm ² , Total Heat Release Rate = 8.8 MJ/m ² , Effective Heat of Combustion = 9.3 MJ/kg

MESHES AND INSULATION BOARD			
Test	Test Method	Criteria	Results
Reinforcing Mesh Alkali Resistance of Reinforcing Mesh	ASTM E2098 (formerly EIMA 105.01)	>21dN/cm (120 pli) retained tensile strength after exposure	Pass
EPS (Physical Properties)			
Density	ASTM C303, D1622	15.2-20.0 kg/m ³ (0.95-1.25 lb/ft ³)	Pass
Thermal Resistance	ASTM C177, C518	4.0 @ 4.4 °C (40 °F)	Pass
Water Absorption	ASTM C272	3.6 @ 23.9 °C (75 °F)	
Oxygen Index	ASTM D2863	2.5 % max. by volume	Pass
Compressive Strength	ASTM D1621 Proc. A	24% min. by volume	Pass
Flexural Strength	ASTM C203	69 kPa (10 psi) min.	Pass
Flame Spread	ASTM E84	172 kPa (25 psi) min.	Pass
Smoke Developed		25 max. 450 max.	Pass Pass



EIFS & COATING

Test	Test Method	Criteria	Results
Abrasion Resistance	ASTM D968	No deleterious effects after 500 liters (528 quarts)	Pass
Accelerated Weathering	ASTM G155 Cycle 1	No deleterious effects after 2000 hours	Pass
Accelerated Weathering	ASTM G23 (G152 & 153)	No deleterious effects after 2000 hours	Pass
Accelerated Weathering	ASTM G53	No deleterious effects after 2000 hours (QUV)	Pass
Freeze-Thaw	ASTM E2485 (formerly EIMA 101.01)	No deleterious effects after 60 cycles	Pass
Freeze-Thaw	ASTM C67 modified/ICBO AC24	No deleterious effects after 10 cycles	Pass
Freeze-Thaw	ASTM E2485/ICC-ES Proc. ICC ES (AC 235)***	No deleterious effects after 10 cycles	Pass
Mildew Resistance	ASTM D3273	No growth during 28 day exposure period	Pass
Water Resistance	ASTM D2247	No deleterious effects after 14 days exposure	Pass
Impact	ASTM D5420	Gardner Impact Falling Weight	Pass
Salt Spray Resistance	ASTM B 117	No deleterious effects after 300 hours exposure	Pass
Water Penetration	ASTM E331 ICC ES (AC 235)***	No water penetration beyond the inner-most plane of the wall after 15 minutes at 137 Pa (2.86 psf)	Pass at 2.86 psf (137 Pa), 6.24 psf (299 Pa), and 12.0 psf (575 Pa) consecutively
Water Vapor Transmission	ASTM E 96 Water Method	Vapor permeable perm (ng/Pa.s.m ²)	EPS 5 perm-inch (114) Base Coat* 12 (679) Finish** 12 (674)
Component-Specific Weather Protection	IBC 1403	2-hour water test of EIFS and specific components	Pass
Drainage Efficiency	ASTM E 2273 ICC ES (AC 235)***	Minimum Drainage Efficiency of 90%	Aggre-flex Drainage 97.8% Rollershield Drainage 99.2% QRW1 Drainage 97.8%
* Base Coat perm value based on Master Wall F&M ** Finish perm value based on Master Wall Perfect Texture *** AC 235 (ASTM E 2568) – Acceptance Criteria for EIFS Clad Drainage Wall Assemblies			
Tensile Bond	ASTM C297/E2134	Minimum 15 psi (104 kPa) – substrate or insulation failure	Plywood/EPSA 67 psi (464) OSB/ EPSA 22 psi (152) Brick/F&M 105 psi (728) Concrete/F&M 94 psi (651) Gypsum/F&M 30 psi (208)
Tensile Bond	ASTM D897	Bond strength before and after 2000 hours florescent UV condensation weathering.	Before 24.6 psi After 22.7 psi
Transverse Wind Load	ASTM E330	Withstand positive and negative wind loads as specified by the building code	Pass. Assemblies vary from 68-287 psf*
* Ultimate wind loads – contact Master Wall for specific assemblies.			



IMPACT RESISTANCE (ASTM E2486/EIMA 101.86)

Description	OZ/SY	IN-LB Results	Joules	EIMA Classification
Standard Mesh	4.5	50-89	6-10	Medium
Hi-Tech Mesh	6.0	50-89	6-10	Medium
Medium Mesh	10.4	50-89	10-17	Medium
Medium & Standard Mesh	10.4 & 4.5	90-150	10-17	High Impact
Strong & Standard Mesh	15.0 & 4.5	Over 150	>17	Ultra High Impact
Ultra & Standard Mesh	21.0 & 4.5	Over 150	>17	Ultra High Impact

CEMPLASTER FIBERSTUCCO

Test	Test Method	Criteria	Results
Finishes & Coatings	Varies		Reference EIFS & Coatings Data
Freeze-Thaw	ICC AC11	No deleterious effects after 10 cycles	Pass
Transverse Load	ICC AC11/ASTM E330	Withstand positive and negative wind loads as specified by the building code	Pass. Assemblies vary from 81-124 psf*
Compressive Strength	ASTM C109	Average load for cured sample	1910 psi
Fire Resistance	ASTM E119	No effect on the fire resistance of a rated wall assembly	See Technical Bulletin MW#168-030111 for assemblies
Combustibility	ASTM E136	Standard Test Method for Assessing Combustibility of Materials in a Vertical Tube Furnace at 750°C, Option A	Pass
Accelerated Weathering	ASTM G26/G155	No deleterious effects after 2000 hours	Pass

* Ultimate wind loads – contact Master Wall for specific assemblies.



ROLLERSHIELD LAB (LIQUID APPLIED AIR/WATER BARRIER)

Test	Test Method	Criteria	Results
Solids Content	Calculation		Rollershield RS – 69.52% solids by weight (55.05% by volume), Rollershield TG – 73.85% solids by weight (60.12% by volume), Rollershield VB – 68.19% solids by weight (52.97% by volume)
Tensile Bond	ASTM C297/E2134 ICC ES (AC 212)*	Minimum 15 psi (104 kPa)	Dens Glass Gold 31 (215), Exterior Gypsum 28 (194), OSB 40 (277), Plywood 79 (563), Cement Board 70 (485), Copper 185 (1282), Galvanized steel 180 (1248), PVC 168 (1165), Aluminum 184 (1275), Coated Aluminum 203 (1407), Stainless Steel 183 (1269)
Freeze-thaw	ASTM E2485/ICC-ES Proc. ICC ES (AC 212)*	No deleterious effects after 10 cycles	Pass: Plywood, Cement Board, OSB, Exterior Gypsum (ASTM C79/C1396) and Dens Glass Gold (ASTM C1377) substrates
Water Resistance	ASTM D2247 ICC ES (AC 212)*	No deleterious effects after 14 days exposure ¹	Pass: Plywood Cement Board, OSB, Exterior Gypsum (ASTM C79/C1396) and Dens Glass Gold (ASTM C1377) substrates
Water Vapor Transmission	ASTM E96 Proc. B ICC ES (AC 212)*	Vapor Permeable	30 perms (Rollershield RS) ² 12 perms (Rollershield TG) 0.07 perms desiccant (A), 1.35 perms water (B)(Rollershield VB)
Air Permeance	ASTM E2178	No ICC or ANSI/EIMA Criteria ASHRAE/IECC max. 0.004 cfm/ft ² @ 1.57 psf	0.001 cfm/ft ² @ 1.57 psf 0.001 L/s/m ² @ 75 Pa
Air Leakage	ASTM E2357	No ICC or ANSI/EIMA Criteria ASHRAE/IECC max. 0.04 cfm/ft ² @ 1.57 psf	0.0006 cfm/ft ² @ 1.57 psf, 0.003 L/s/m ² @ 75 Pa 0.04 cfm/ft ² @ 6.24 psf, 0.02 L/s/m ² @ 300 Pa
Structural Performance	ASTM E1233 Proc. A ICC ES (AC 212)*	Minimum 10 positive cycles at 1/240 deflection; No cracking in field, at joints or interface with flashing	Pass
Racking	ASTM E72 ICC ES (AC 212)*	No cracking in field, at joints or interface with flashing at net deflection of 3.2 mm (1/8 inch)	Pass
Restrained Environmental	ICC-ES Procedure ICC ES (AC 212)*	5 cycles; No cracking in field, at joints or interface with flashing	Pass
Water Penetration	ASTM E331 ICC ES (AC 212)*	No water penetration beyond the inner-most plane of the wall after 15 minutes at 137 Pa (2.86 psf)	Pass
UV Exposure	ICC ES Proc. ICC ES (AC 212)*	210 hours of exposure, rated for 6 months of exposure	Pass
Accelerated Aging	ICC ES Proc. ICC ES (AC 212)*	25 cycles of wetting and drying	Pass
Hydrostatic Pressure Test	AATCC 127 ICC ES (AC 212)*	ICC: 549 mm (21.6 in) water column for 5 hours	Pass
Surface Burning Characteristics	ASTM E84	Flame Spread < 25 Smoke Developed < 450	Pass
Intermediate Multi-Story Fire Test	NFPA 285 (UBC 26-9)	No flame spread with up to 4" insulation	Pass
Nail Sealability	ASTM D1970	Standard Specification for Self-Adhering Polymer Modified Bituminous Sheet Materials Used as Steep Roofing Underlayment for Ice Dam Protection	Pass (22 mils)
Heat and Smoke Release Rates	ASTM E1354, IBC Section 1403.5, Exception 2 Requirements	Peak Heat Release Rate <150 kW/m ² , Total Heat Release Rate <20 MJ/m ² , Effective Heat of Combustion <18 MJ/kg	RS: Peak Heat Release Rate = 32 kW/m ² , Total Heat Release Rate = 3.6 MJ/m ² , Effective Heat of Combustion = 2.5 MJ/kg, VB: Peak Heat Release Rate = 336 kW/m ² , Total Heat Release Rate = 8.8 MJ/m ² , Effective Heat of Combustion = 9.3 MJ/kg

* (AC212 – Acceptance Criteria for Water-Resistive Coatings Used as Water-Resistive Barriers over Exterior Sheathing, also referred to as ASTM E 2570

1. No cracking, checking, rusting, crazing, erosion, blistering, peeling, or delamination when viewed under 5x magnification

2. Defined as a Class III vapor retarder per the 2015 IBC and IRC





Master Wall Inc.
Building a Culture of Excellence

PRODUCT DATA

CEMPLASTER FIBERSTUCCO

Master Wall® Cemplaster Fiberstucco is a fibered Portland cement-based bagged stucco with exceptional workability, open working time, water retention, early strength, shrinkage resistance and long-term durability.

FEATURES & BENEFITS

- Concentrate, mix with sand and water
- Fibered for better crack resistance
- Can be modified with Stucco Ad-Liquid for better tensile, compression and mold-resistance
- For application over lath or direct-applied to approved substrates
- Manufacturer Warranty

Application Temperature: 40°-110°F (5°-43°C)

Working Time: 1 hour

Set Time: 1-2 hours

Cure Time: 48-72 hrs at room temperature, working and drying time will vary with temperature and humidity.

JOB CONDITIONS

Air and substrate temperature for application of Cemplaster Fiberstucco must be 40°F (5°C) or higher and must remain 40°F (5°C) or higher for a minimum of 24 hours. Provide temporary protection to protect the wall system from damage until permanent flashings, caps and sealants are installed. Store materials in a dry place, within prescribed temperature limits and out of direct sunlight. Working and drying times are based upon normal room temperature conditions and will vary with temperature and humidity.

PREPARATION

Preparation - The substrate must be approved by Master Wall Inc.®, clean, dry, structurally sound and free of efflorescence, oil, grease, form release agents and curing compounds or anything that would affect bond. Painted surfaces are not acceptable and must be removed or metal lath applied. All sheathed applications must receive a minimum of 2-layers code-approved asphalt felt or equivalent.

Prepare smooth or non-absorbent solid substrates by one of the following methods or a combination; Sandblasting, chipping or acid etching, A dash-bond coat applied forcefully, Bonding compounds such as Master Wall® Stucco Ad-Liquid or BA57, Furred or self-furring metal plaster bases as per ASTM C1063.

Coverage per bag (sf/sm)*

3/8" (9.5 mm) thick: 80 sf (7.4 sm)

1/2" (12.7 mm) thick: 70 sf (6.5 sm)

3/4" (19 mm) thick: 40 sf (3.7 sm)

7/8" (22 mm) thick: 34 sf (3.1 sm)

**All coverage is approximate and depend upon substrate, details and individual application*

Packaging/Shelf Life/Storage

Packaging: 80 lb. (36 kg) moisture resistant bags.

Shelf Life: 1 year

Storage: Protect from weather in a cool dry area, with low humidity.

Technical Data

- ASTM C109 Compressive Strength -1900 psi
- ASTM E330 Wind-rated Assemblies -81-108 psf Ultimate Load
- ASTM G155 Accelerated Weathering - Pass
- ICC-ES AC11 Durability Testing - Pass
- ASTM E136 - Noncombustible
- ASTM C926 compliant following standard practices

Recognized in INTERTEK CCRR-0215

APPLICATION PROCEDURE

Mixing Instructions: Each bag of Cemplaster Fiberstucco is mixed with 200 lbs (90.7 kg) of sand aggregate (ASTM C897 or ASTM C144) and clean, potable water (200 lbs is roughly 2.5 cubic feet (0.07 cubic meters) of clean, damp-loose sand or 2-3/4 Master Wall® pails, filled). Using a clean mixer, first add 1/2 to 2/3 the water required, 1/2 the sand, 1 bag Cemplaster Fiberstucco, then the rest of the sand and water to achieve the desired workability. Mix materials for 3 to 5 minutes after all materials are in the mixer. Total water content can vary between 4 to 6.5 gallons (15-24.5L). Stucco Ad-Liquid may also be used instead of an equal amount of water (up to 5 gallons, 18.9L). See system data sheet for specific levels required for increased warranties.

Tempering—The mixed stucco can be re-tempered one time within 1 hour. Material older than 1-1/2 hours should be discarded.

Application

Direct Applied to Masonry: Dampen absorptive masonry just before application with water or Master Wall® BA57 Bonding Agent.

Scratch Coat: apply Cemplaster Fiberstucco with sufficient pressure to key into and embed the metal lath (if used). Apply sufficient material, approximately half the Cemplaster Fiberstucco ground thickness to cover the metal lath and to permit scoring the surface. Score the Cemplaster Fiberstucco horizontally upon completion of each panel in preparation for brown coat if a “double back” application of a wet scratch and brown coat isn't being used.

Brown Coat: as soon as the scratch coat is firm enough to receive the brown coat without damage, apply the brown coat with sufficient pressure to ensure intimate contact with the first coat to an approximate thickness as needed to bring the Cemplaster Fiberstucco to a uniform thickness that matches the grounds of the accessories. Use a rod or straight edge to bring the surface to a true, even plane. Fill depressions in plane with Cemplaster Fiberstucco.

After the Cemplaster Fiberstucco has become slightly firm float the surface lightly with a Darby or wood float to densify the surface and to provide a smooth, even surface.

CLEAN UP

Tools and equipment can be cleaned with soapy water while the Cemplaster Fiberstucco mixture is still wet.

Curing Recommendations

Cure following ASTM C926 guidelines or other method acceptable to the design professional for 48-72 hours. Mixes with Master Wall® Stucco Ad Liquid do not need moist curing.

Allow to cure until clean, dry and hard before finishing:

- Typically 7-14 days if no Master Wall® Stucco Ad Liquid is used.
- After 72 hours if Master Wall® Stucco Ad Liquid is used provided the Cemplaster Fiberstucco is clean, dry and hard.
- After 24 hours if using a leveling base coat (LBC).

Hazard: This chemical is not considered hazardous according to the OSHA Hazard Communication Standard 2012 (29 CFR 1910.1200).

WARNING: Products containing crystalline silica (airborne particles of respirable size) are known to the State of California to cause cancer. For more information go to www.p65Warnings.ca.gov.

VOC: Less than 50 g/L.

Approved Substrates

Self-furring Metal Lath

Concrete

Brick

Masonry

Others approved in writing

Information contained in this product data sheet conforms to the standard detail recommendations and specifications for the installation of Master Wall Inc.® products and is presented in good faith. Master Wall Inc.® assumes no liability, expressed or implied as to the architecture, engineering, or workmanship of any project. This information may be concurrent with, or superseded by other applicable documents, such as specifications and details. Contact Master Wall Inc.® for the most current product information. ©2022 Master Wall Inc.®



Master Wall Inc.[®]
Building a Culture of Excellence

PRODUCT DATA

READY CEMPLASTER FIBERSTUCCO

Master Wall® Ready Cemplaster Fiberstucco is a fibered Portland cement-based bagged stucco with exceptional workability, open working time, water retention, early strength, shrinkage resistance and long-term durability.

FEATURES & BENEFITS

- Ready to use, mix with water
- Great for jobsites with limited space for on-site storage
- Fibered for better crack resistance
- Can be modified with Stucco Ad-Liquid for better tensile, compression and mold-resistance
- For application over lath or direct-applied to approved substrates
- Manufacturer Warranty

Application Temperature: 40°-110°F (5°-43°C)

Working Time: 1 hour

Set Time: 1-2 hours

Cure Time: 48-72 hrs at room temperature, working and drying time will vary with temperature and humidity.

JOB CONDITIONS

Air and substrate temperature for application of Ready Cemplaster Fiberstucco must be 40°F (5°C) or higher and must remain 40°F (5°C) or higher for a minimum of 24 hours. Provide temporary protection to protect the wall system from damage until permanent flashings, caps and sealants are installed. Store materials in a dry place, within prescribed temperature limits and out of direct sunlight. Working and drying times are based upon normal room temperature conditions and will vary with temperature and humidity.

PREPARATION

The substrate must be approved by Master Wall Inc.®, clean, dry, structurally sound and free of efflorescence, oil, grease, form release agents and curing compounds or anything that would affect bond. Painted surfaces are not acceptable and must be removed or metal lath applied. All sheathed applications must receive a minimum of 2-layers code-approved asphalt felt or equivalent.

Prepare smooth or non-absorbent solid substrates by one of the following methods or a combination; Sandblasting, chipping or acid etching, A dash-bond coat applied forcefully, Bonding compounds such as Master Wall® Stucco Ad-Liquid or BA57, Furred or self-furring metal plaster bases as per ASTM C1063.

Coverage perbag (sf/sm)*

3/8" (9.5 mm) thick: 22 sf (2 sm)

1/2" (12.7 mm) thick: 20 sf (1.8 sm)

3/4" (19 mm) thick: 11 sf (1 sm)

7/8" (22 mm) thick: 9.4 sf (0.9 sm)

**All coverage is approximate and depend upon substrate, details and individual application*

Packaging/Shelf Life/Storage

Packaging: 80 lb. (36 kg) moisture resistant bags.

Shelf Life: 6-12 months

Storage: Protect from weather in a cool dry area, with low humidity.

Technical Data

- ASTM C109 Compressive Strength 1900 psi
- ASTM E330 Wind-rated Assemblies 81-108 psf Ultimate Load
- ASTM G155 Accelerated Weathering - Pass
- ICC-ES AC11 Durability Testing - Pass
- ASTM E136 - Noncombustible
- ASTM C926 compliant following standard practices

Recognized in IAPMO UES ER-0381

APPLICATION PROCEDURE

Mixing - Each bag of Ready Cemplaster Fiberstucco is mixed clean, potable water. Using a clean mixer, first add 1/2 to 2/3 the water required, 1 bag Ready Cemplaster Fiberstucco, then the rest of the water to achieve the desired workability. Mix materials for 3 to 5 minutes after all materials are in the mixer. Total water content can vary between 1 to 1.5 gallons (3.8-5.7L). Stucco Ad-Liquid may also be used instead of an equal amount of water. See system data sheet for specific levels required for increased warranties.

Tempering—The mixed stucco can be re-tempered one time within 1 hour. Material older than 1-1/2 hours should be discarded.

Application

Direct Applied to Masonry: Dampen absorptive masonry just before application with water or Master Wall® BA57 Bonding Agent.

Scratch Coat: apply Ready Cemplaster Fiberstucco with sufficient pressure to key into and embed the metal lath (if used). Apply sufficient material, approximately half the Ready Cemplaster Fiberstucco ground thickness to cover the metal lath and to permit scoring the surface. Score the Ready Cemplaster Fiberstucco horizontally upon completion of each panel in preparation for brown coat if a “double back” application of a wet scratch and brown coat isn’t being used.

Brown Coat: as soon as the scratch coat is firm enough to receive the brown coat without damage, apply the brown coat with sufficient pressure to ensure intimate contact with the first coat to an approximate thickness as needed to bring the Ready Cemplaster Fiberstucco to a uniform thickness that matches the grounds of the accessories. Use a rod or straight edge to bring the surface to a true, even plane. Fill depressions in plane with Ready Cemplaster Fiberstucco.

After the Ready Cemplaster Fiberstucco has become slightly firm float the surface lightly with a Darby or wood float to densify the surface and to provide a smooth, even surface.

CLEAN UP

Tools and equipment can be cleaned with soapy water while the Ready Cemplaster Fiberstucco mixture is still wet.

Curing Recommendations

Cure following ASTM C926 guidelines or other method acceptable to the design professional for 48-72 hours. Mixes with Master Wall® Stucco Ad Liquid do not need moist curing.

Allow to cure until clean, dry and hard before finishing:

- Typically 7-14 days if no Master Wall® Stucco Ad Liquid is used.
- After 72 hours if Master Wall® Stucco Ad Liquid is used provided the Cemplaster Fiberstucco is clean, dry and hard.
- After 24 hours if using a leveling base coat (LBC).

Hazard: This chemical is not considered hazardous according to the OSHA Hazard Communication Standard 2012 (29 CFR 1910.1200).

WARNING: Products containing crystalline silica (airborne particles of respirable size) are known to the State of California to cause cancer. For more information go to www.p65Warnings.ca.gov.

VOC: Less than 50 g/L.

Approved Substrates

Self-furring Metal Lath
Concrete
Brick
Masonry
Others approved in writing

Information contained in this product data sheet conforms to the standard detail recommendations and specifications for the installation of Master Wall Inc.® products and is presented in good faith. Master Wall Inc.® assumes no liability, expressed or implied as to the architecture, engineering, or workmanship of any project. This information may be concurrent with, or superseded by other applicable documents, such as specifications and details. Contact Master Wall Inc.® for the most current product information.
©2022 Master Wall Inc.®



Master Wall Inc.®
Building a Culture of Excellence

PRODUCT DATA

CEMPLASTER FIBERSTUCCO CO-BRAND PRODUCTS

As part of our Cemplaster Fiberstucco Systems, Master Wall Inc.® allows select products as part of our warranty program. Warranties are available up to 20-years depending upon product selections and combinations.

FEATURES & BENEFITS

- Warranties up to 20-years through Master Wall Inc.®
- Preblended and Concentrate options
- Locally and regionally available for LEED compliance
- Engineered for consistency

Warranties for all projects will be provided by Master Wall® following our regular process. For coverage the following needs to be completed:

- Materials must be purchased through an authorized Master Wall® distributor.
- A warranty must be requested for the project, including all QUIKRETE® requirements noted on the request form.
- The applicator must be certified and current.
- To request a warranty go to the Tech/Support page at masterwall.com and fill out the form.

See our Systems page for Cemplaster Fiberstucco Warranties

Information contained in this product data sheet conforms to the standard detail recommendations and specifications for the installation of Master Wall Inc.® products and is presented in good faith. Master Wall Inc.® assumes no liability, expressed or implied as to the architecture, engineering, or workmanship of any project. This information may be concurrent with, or superseded by other applicable documents, such as specifications and details. Contact Master Wall Inc.® for the most current product information. ©2021 Master Wall Inc.®



Master Wall Inc.®
Building a Culture of Excellence

CO-BRAND PRODUCTS

QUIKRETE® One Coat Fiberglass Reinforced Stucco (FRS) (No. 1200 Sanded, No. 1216-Concentrated)

QUIKRETE® Base Coat Stucco Scratch & Brown (No. 1139) & Base Coat Stucco - Pump Grade (No. 1139-86)*

QUIKRETE® Base Coat Stucco with Water-Stop (No. 1139-89)*

QUIKRETE® Base Coat Stucco - Pump Grade (No. 1139-86)*

FRS Lightweight Stucco (No. 1201-56)*

SPEC MIX® SCRATCH AND BROWN FIBER REINFORCED STUCCO(SU-04)*

SPEC MIX® Scratch and Brown Preblended Stucco*

SPEC MIX® Fiber Base Coat (FBC)

WESTERN 1-Kote Gray Concentrate

WESTERN 1-Kote Gray Premium Concentrate

WESTERN 1-Kote Premium Sanded Gray

WESTERN 1-Kote Sanded Gray

*Apply these stucco products in accordance with ASTM C926 and Master Wall® requirements.



Stucco Accessories

Systems

Cemplaster Fiberstucco

Manufacture Locations:

Verify with manufacturer

Recycled Content:

Varies with manufacturer

Packaging (trims): Typically 10' lengths

Weight: Varies

Typical Grounds

(thickness): 3/8" (9.5mm),
1/2" (13mm), 5/8" (16mm),
3/4" (19mm), 7/8" (22mm)

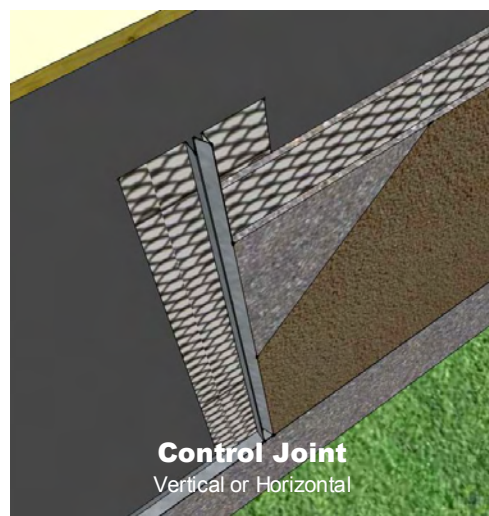
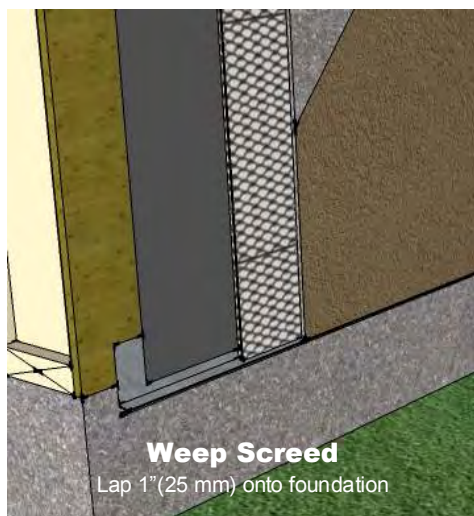
Materials:

1. PVC, ASTM D 1784.
2. Galvanized Metal, ASTM A 653 with G60 or G90 coating.
3. Zinc, ASTM B 69.
4. Stainless Steel, ASTM C841 Type 304.

Lath Reinforcement:

CFS01, 3/8" thick No. 17 gauge galvanized steel woven wire fabric, ASTM C1032.
CFS03, 1/2" thick 2.5 lb./yd² (1.4 kg/m²) self-furred galvanized steel diamond mesh metal lath, ASTM C 847.
CFS03-SS, 1/2" thick 2.5 lb./yd² (1.4 kg/m²) self-furred stainless steel diamond mesh metal lath, ASTM C 847.
CFS04 & 05, 3/4 - 7/8" thick 3.4 lb./yd² (1.8 kg/m²) self-furred galvanized steel diamond mesh metal lath, ASTM C 847.
CFS04 & 05-SS, 3/4 - 7/8" thick 3.4 lb./yd² (1.8 kg/m²) self-furred stainless steel diamond mesh metal lath, ASTM C 847, 304 or 316 stainless steel.

Stucco accessories are used to help gauge the thickness of stucco systems, help control stucco movement and form corners. Lath reinforcement is used to reinforce the stucco.



Manufacturers

Amico Building Products^{1,2,3,4} 800-366-2642, www.amico-lath.com

CEMCO² 800-775-2362, www.cemcosteel.com

ClarkDietrich Building Systems^{1,2,3} 513-870-1100, www.clarkdietrich.com

Plastic Components¹ 800-327-7077, www.plasticcomponents.com

Vinyl Corp.¹ 800-648-4695, www.vinylcorp.com

Wind-Lock¹ 800-872-5625, www.wind-lock.com

Product Test Standards

ASTM A653, ASTM B69, ASTM C841, ASTM C847, ASTM C926, ASTM C1063, ASTM D1784, Plastic may not be suitable for non-combustible construction assemblies.

 **Master Wall Inc.**[®]
Building a Culture of Excellence
masterwall.com

PO Box 397 • Fortson • GA • 31808 • 800-755-0825 • Tech: 800-760-2861



Stucco Accessories

Application Procedure

After satisfactory inspection of surfaces and correction of any deviations from specification requirements commence the Cemplaster Fiberstucco installation in accordance with Master Wall Specifications.

Weep Screed Installation

Install foundation weep screed at the base of the wall securely to framing with the appropriate fastener. Locate foundation weep screed so that it overlaps the joint between the foundation and framing by a minimum of 1 inch (25 mm). Locate the foundation weep screed minimum 4 inches (101 mm) above earth grade, 2 inches (51 mm) above finished grade (paved surfaces, for example).

Weather Protection

Weather barrier will lap onto foundation weep screed as noted in Master Wall® details. Verify that WRB installation is complete.

Casing Bead and Expansion Joint Installation

Install casing beads at Cemplaster Fiberstucco terminations—doors, windows and other through wall penetrations. Install expansion joints (or back-to-back casing beads) at building expansion joints, where the Cemplaster Fiberstucco is to be installed over dissimilar construction or substrates, at changes in building height, at floor lines, columns, and cantilevered areas. Install full accessory pieces where possible and avoid small pieces. Seal adjoining pieces by embedding ends in sealant. Abut horizontal into vertical joint accessories. Attach at 6-inch (152 mm) centers into framing with appropriate fasteners.

(Note: refer to architectural drawings for joint locations and accessory type. Moisture protection must be continuous behind joints and accessories.)

Control Joint Installation

Install control joints every 144 ft² (13.4 m²) for walls and 100 ft² (9.3 m²) maximum (as indicated on the construction documents). Tack in place as insure proper alignment during the application of the lath. Wire tie control joints to lath at 6 inches (152 mm) on center if framing members aren't present under the accessory. Seal any exposed ends and edges preferably by setting them in sealant during installation to prevent water entry.

Lath Installation

Diamond Mesh Metal Lath: General—install metal lath with the long dimension at right angles to structural framing. Terminate lath at expansion joints. Do not install continuously beneath joints. Seams/overlaps – overlap side seams a minimum of ½ inch (13 mm) and end seams a minimum 1-inch (25 mm). Stagger end seams. Overlap casing beads and expansion joints minimum 1 inch (25 mm) over the narrow wing accessories and 2 inches over expanded flange accessories. Attachment—fasten securely through sheathing into structural framing at 6 inches (152 mm) on center maximum vertically and 16-24 inches (41-61 cm) on center horizontally*. Wire tie horizontal laps at 8 inches (204 mm) on center at: side laps, accessory overlaps, and where end laps occur between supports.

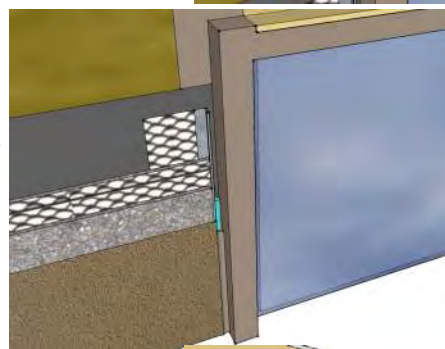
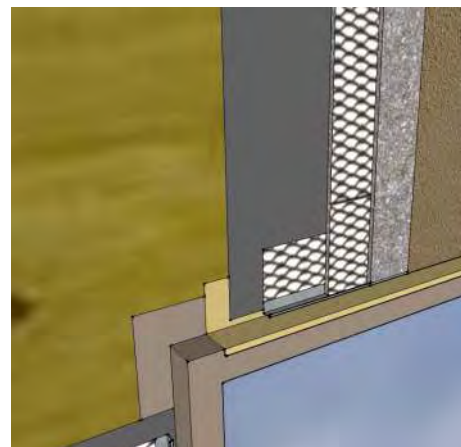
Florida HVHZ: 7/8" minimum thickness of Cemplaster Fiberstucco, 3.4#/#sy metal lath fastened 4" (102 mm) on center vertically and 16" (41 cm) on center horizontally.

Welded wire fabric lath—follow installation as for metal lath except overlap all seams by one mesh minimum. **Paper-backed lath**—follow installation as for metal lath. Lap lath over lath, not paper to lath overlap. For horizontal overlaps the paper backing must lap shingle style behind the lath-to-lath overlap.

Apply Striplath, minimum 4" x 12" (102 mm x 305 mm), in type and weights of selected lath at casing bead corners if control joints aren't located there.

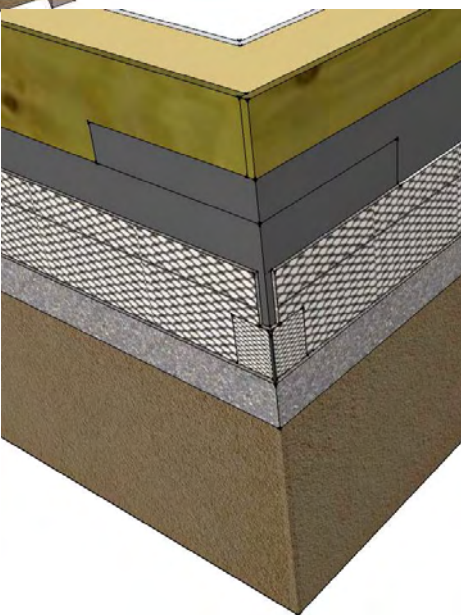
Inside and Outside Corners: Install corner lath at inside corners and corner bead at outside corners over lath. Attach through lath into framing at 6 inches (152 mm) on center with appropriate fasteners.

(*Note: the type fastener selected, its layout and pullout or withdrawal value from the supporting construction must be verified and approved by the project engineer/architect with respect to design wind load and local building code requirements).



Casing Bead
(above)

Corner Bead
(below)



Information contained in this product data sheet conforms to the standard detail recommendations and specifications for the installation of Master Wall Inc.® products and is presented in good faith. Master Wall Inc.® assumes no liability, expressed or implied as to the architecture, engineering, or workmanship of any project. This information may be concurrent with, or superseded by other applicable documents, such as specifications and details. Contact Master Wall Inc.® for the most current product information. ©2016 Master Wall Inc.®

 **Master Wall Inc.®**
Building a Culture of Excellence
masterwall.com

PO Box 397 • Fortson • GA • 31808 • 800-755-0825 • Tech: 800-760-2861



Master Wall Inc.®
Building a Culture of Excellence

PRODUCT DATA

SUPERIOR FINISHES

To finish strong you need a Superior Finish. Master Wall® finishes are crafted with one of the highest 100% acrylic polymer contents in our industry. This translates to extra durability, lower life-cycle maintenance and a longer lasting finish.

FEATURES & BENEFITS

- 100% Acrylic Polymers for durability
- Dirt Pickup Resistant (DPR) Polymer Formulation
- Quartz or Marble aggregate available
- 64 Standard Colors
- Custom color matching available
- DuroTone colorfast pigments, Excel mildew enhancement, Silicone Coat additive available
- Vapor Permeable - resists blistering and allows trapped water vapors to pass
- Low VOC—Suitable for Interior Use
- Water Based - easy clean up with water

Application Temperature: 40°-110°F (5°-43°C)

Working Time: 1/4 hr

Set Time: 8-12 hrs

Dry Time: 48-72 hrs at room temperature, working and drying time will vary with temperature and humidity.

JOB CONDITIONS

Air and substrate temperature for application of Superior Finishes must be 40°F (5°C) or higher and must remain 40°F (5°C) or higher for a minimum of 24 hours. Provide temporary protection to protect the wall system from damage until permanent flashings, caps and sealants are installed. Store materials within prescribed temperature limits and out of direct sunlight. High temperatures will reduce working times, Low temperatures and/or high humidity and pigment loading will extend working, set and dry times.

PREPARATION

The substrate must be approved by Master Wall Inc.®, clean, dry, structurally sound and free of efflorescence, oil, grease, form release agents and curing compounds or anything that would affect bond. Painted surfaces are not acceptable and must be removed. Concrete and surfaces should cure for a minimum of 28 days. Stucco should be cured until clean, dry and hard—typically 14 days with a pH of 10 or less (13 or less if Primecoat Primer is used).

Interior drywall should be finished and made ready for paint. Prime surfaces with Primecoat/Sanded Primecoat primer prior to finishing.

Coverage per pail (sf/sm)*

- Perfect Swirl 2.0, 120-150 (11-14)
- Fine Sand 1.0, 160-170 (15-15.8)
- Medium Sand 1.5, 130-150 (12-14)
- Versatex 0.5, Varies with Texture

**All coverage is approximate and depend upon substrate, details and individual application*

Packaging/Shelf Life/Storage Packaging:

- 5 gallon (19L) pail Pail

Shelf Life: 2 years

Storage: Protect from extreme heat (90°F, 32°C), freezing and direct sunlight.

Technical Data

ASTM B117 Salt Spray Resistance - Pass ASTM

C67 Freeze/Thaw - Pass

ASTM C297 Tensile Bond - 30 psi minimum

ASTM D968 Abrasion Resistance - Pass 500L

ASTM D2247/E2570 Water Resistance - Pass

ASTM D3273 Mildew Resistance - Pass 28 Days

ASTM E84 Surface Burning - Pass, FS=0, SD=0

ASTM E 96 Vapor Permeability - Pass, 12 perms, vapor open

ASTM E108 Flame Propagation - Pass

ASTM E2485/2570 (formerly EIMA 101.01)

Impact Resistance - Pass

ASTM G23/G154/G155 Accelerated Weathering - Pass 2000 Hours

ASTM G53 Accelerated Weathering - Pass 2000 Hours

APPLICATION PROCEDURE

Base Coats - Must be flat, dry hard, and free of efflorescence. Master Wall® base coats must cure a minimum of 12 hours before application of Superior Finish. Substrates of brick, masonry or concrete should be leveled smooth using either Master Wall® base coats or stucco.

Mixing - Thoroughly stir Superior Finish using a heavy duty 1/2" drill at 400 - 500 rpm and a heavy duty mixing paddle. Small amounts of clean, potable water may be added to obtain a workable consistency. To avoid color variations, add the same amount of water to each pail. Do not exceed 24 ounces (0.7L) of water per pail of finish.

Application - Apply a uniform thickness (about 1/16", 1.6 mm) of Superior Finish to the substrate using a stainless steel trowel. Spread evenly and then scrape the finish coat down to a thickness no greater than the largest aggregate in the material. Immediately float the finish coat using a plastic float to the desired texture. Always maintain a wet edge to achieve uniformity of texture and color. Allow the finish to fully dry and set before exposure to inclement weather.

FOR PROFESSIONAL RESULTS

Apply finish coats away from direct sunlight. Cold joints or color variations can occur if the finish dries too quickly. Priming stucco surfaces with Primecoat/Sanded Primecoat evens out finish absorption and should be strongly considered and specified for dark colored finishes, especially those using Ultra Deep Base (UDB) tint base and over stucco to avoid efflorescence blush. Under certain conditions dark colors may show efflorescence on the surface during the cure process.

Surfaces exposed to the weather must be sloped (6:12 minimum). Use of dark colors in high temperature climates can affect the performance of the system, especially EIFS and areas may need to be limited.

Deep, intense colors should be specified with DuroTone pigments to maintain colorfastness longer. Verify specialty colors with your Master Wall® Distributor. Finishes are intended for the approved substrates listed above and should not be applied directly to gypsum board or insulation board products.

CLEAN UP

Tools and equipment can be cleaned with soapy water while the Superior Finish is still wet.

Hazard: This chemical is not considered hazardous according to the OSHA Hazard Communication Standard 2012 (29 CFR 1910.1200).

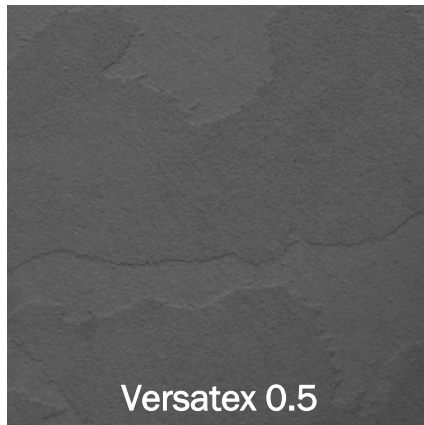
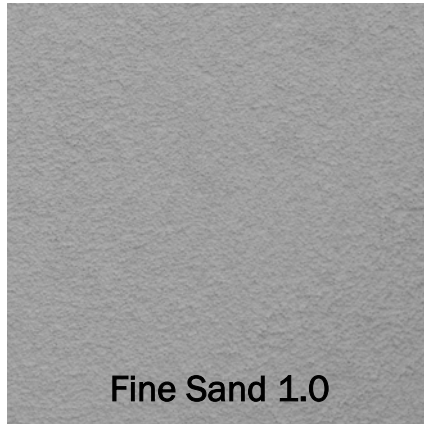
VOC: Less than 50 g/L.

See Superior Finishes for other technical properties

Approved Substrates

Master Wall® Base Coats
Cemplaster Fiberstucco, One Coat Stucco (OCS), Primecoat Primer surfaces, ASTM C926 Stucco

Prepared & Base Coated Surfaces of:
Brick, Concrete, Masonry
Others approved in writing



Information contained in this product data sheet conforms to the standard detail recommendations and specifications for the installation of Master Wall Inc.® products and is presented in good faith. Master Wall Inc.® assumes no liability, expressed or implied as to the architecture, engineering, or workmanship of any project. This information may be concurrent with, or superseded by other applicable documents, such as specifications and details. Contact Master Wall Inc.® for the most current product information. ©2022 Master Wall Inc.®



Health & Safety

WARNING!

Causes eye and skin irritation.
 Precautionary Statement
 Wash hands thoroughly after handling. Wear protective gloves/protective clothing/eye protection/face protection.

FIRST AID MEASURES

Eye Contact: Immediately flush eyes with plenty of water for at least 15 to 20 minutes. Ensure adequate flushing of the eyes by separating the eyelids with fingers. Get immediate medical attention.

Skin Contact: Immediately wash skin with plenty of soap and water for 15 to 20 minutes, while removing contaminated clothing and shoes. Get medical attention if irritation develops or persists.

Inhalation: If inhaled, remove to fresh air. If not breathing, give artificial respiration or give oxygen by trained personnel. Seek immediate medical attention.

Ingestion: If swallowed, do NOT induce vomiting. Call a physician or poison control center immediately. Never give anything by mouth to an unconscious person.

Store locked up. Dispose of contents/container in accordance with Local, State, Federal and Provincial regulation.

Spills: Collect with suitable absorbent material such as cotton rags.

Disposal: Dispose of in accordance with local, state or federal regulations.

Warning: KEEP CONTAINER CLOSED WHEN NOT IN USE. KEEP OUT OF THE REACH OF CHILDREN. NOT FOR INTERNAL CONSUMPTION. FOR INDUSTRIAL USE ONLY.

Consult the Safety Data Sheet (SDS) in the Products section at masterwall.com for further health and safety information.

LIMITED WARRANTY
 This product is subject to a written limited material or system warranty. Obtain a warranty from the Tech Support tab of our website. Refer to Specifications for more complete information on proper use and handling of this product.