

Project Submittal Package



Project:

Location:

Architect:

General Contractor:

Applicator:



Master Wall Inc.®



[System Data Sheets](#) [Product Data Sheets](#) [Sample Warranty](#)

[Specifications](#) [Details](#) [Web Link \(click here\)](#)

PO Box 397

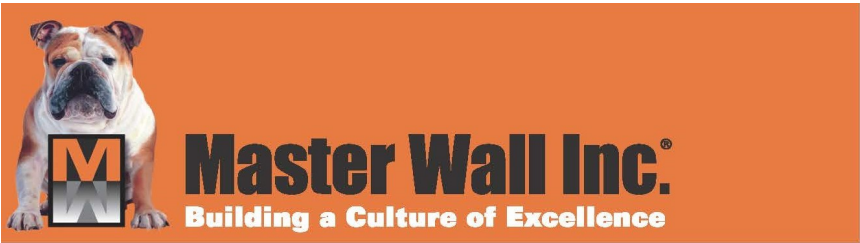
Fortson

GA

31808

800-755-0825

masterwall.com



LiMa M220 LIGHT MASONRY WALL SYSTEM

The LiMa M220 thin brick and stone system is an economical, lightweight wall cladding for commercial projects.

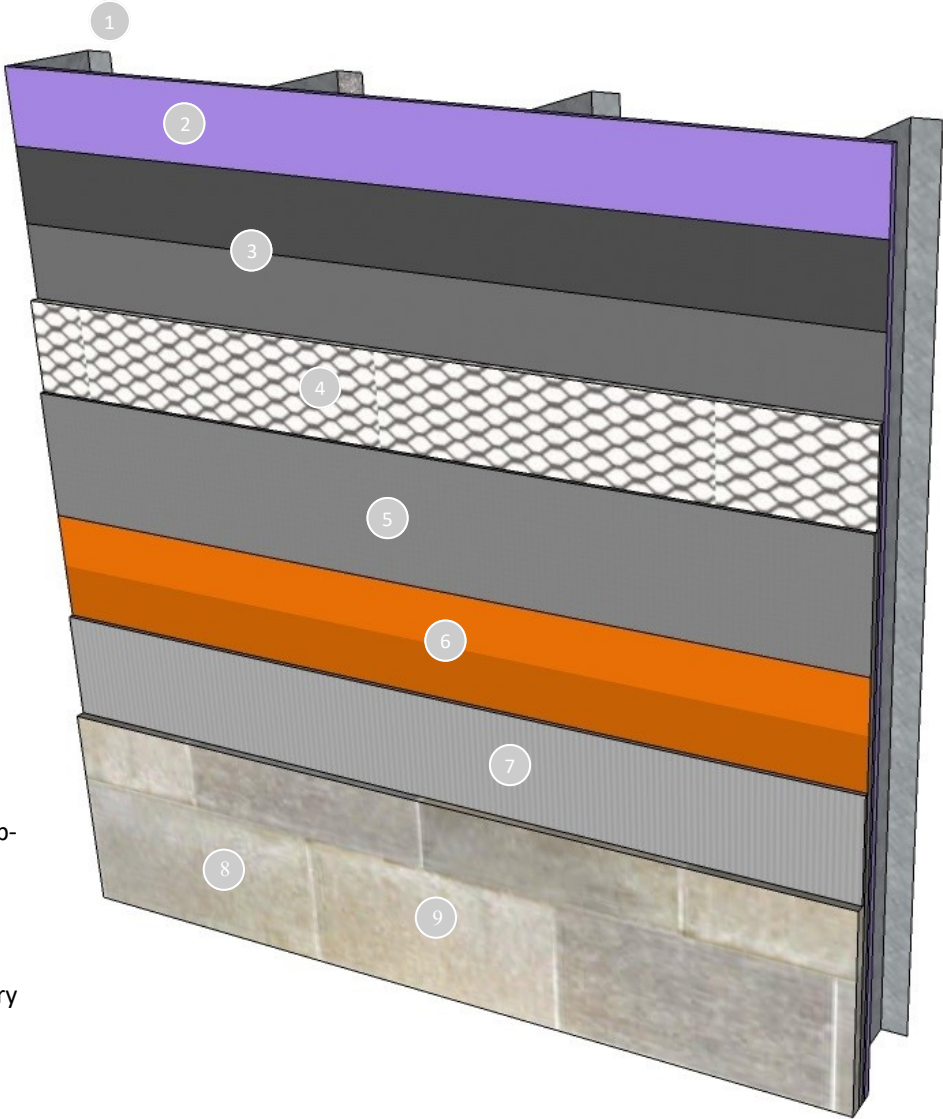
It features sheet type water barriers and reinforced Cemplaster Fiberstucco for an economical installation.

Our Rollershield air and water barrier product is either rolled, sprayed or troweled in place to provide weather protection.

The UltraBond adhesive has class leading slump resistance and cures quickly to quickly get your wall system in service.

Features & Benefits

- 20-year limited warranty
- Durable Cemplaster Fiberstucco mortar bed
- Rollershield options
 - Rollershield-RS, vapor open roll grade
 - Rollershield-TG, vapor open trowel grade
 - Rollershield-VB vapor closed roll grade
- Quality products with great durability



1. Metal Framing
2. ASTM C1177 glass mat or other approved sheathing
3. Water Barriers
4. 2.5#/sy Self-furring Metal Lath
5. Cemplaster Fiberstucco leveling coat
6. Rollershield (2 coats or 22 mils dry thickness)
7. UltraBond Adhesive
8. Thin Brick or Stone (by others)
9. Mortar (by others)

Short Form Specification

1.0 General

This is a specification for the application of a Master Wall® Light Masonry (LiMa) application over metal framing and ASTM C1177 exterior gypsum sheathing.

1.1 System Description

The Master Wall® LiMa M220 is a light masonry stone or thin brick application over a sheathing with two water barriers, a leveling coat of scratch coat of Master Wall® Cemplaster Fiberstucco. Two coats of SuperiorShield Rollershield is applied over the stucco with UltraBond as the adhesive for ICC-ES AC51 compliant stone or thin brick with mortar.

1.2 Design Requirements:

- A. Reference Master Wall® suggested details and architectural drawings for specific detail requirements.
- B. Slope all surfaces a minimum of 1:2 (6" in 12") to shed water, maximum 12" (305 mm) wide.
- C. Maximum deflection of substrates shall not exceed L/360.
- D. Typical acceptable substrates include CDX exterior grade plywood, Exposure 1 Oriented Strand Board (OSB).
- E. Expansion joints are required in the cladding at building expansion joints, panel joints, floor lines in wood framed construction, and other areas where significant movement occurs.

1.3 Quality Assurance

- A. The Rollershield air/water barrier shall be recognized in IAPMO ER-0384.
- B. SuperiorShield product bulletins, application instructions and details.
- C. The weather resistive barrier shall be as recognized in the applicable building code or recognized alternative.
- D. Cemplaster Fiberstucco product bulletins, application instructions and attachment methods.

1.4 Job Conditions

- A. Store all materials protected from weather and direct sunlight at temperatures above 40°F (5°C).
- B. The ambient and wall temperature shall be a minimum of 40°F (5°C) and shall remain so for at least 24 hours after installation.

1.5 Warranty

- A. Application shall include a 20-year limited warranty, please reference the LiMa Warranty Program Limited Warranty.

2.0 Products

All components of the LiMa application shall be manufactured by Master Wall® and supplied by an authorized distributor.

2.1 Master Wall® Cemplaster Fiberstucco with 2.5 #/sy self-furring metal lath reinforcement:

- A. Cemplaster or Ready Cemplaster Fiberstucco and related components.
- B. 2.5 #/sy self-furring metal lath complying with ASTM C847.
- C. Appropriate fasteners as noted in the Cemplaster Fiberstucco specifications.

2.2 SuperiorShield Water Barrier & Flashing Tapes:

- A. SuperiorShield Rollershield RS: A 100% pure acrylic-based roll-applied weather-resistive barrier.
- B. SuperiorShield Rollershield TG: A 100% pure acrylic-based trowel grade water-resistive barrier.
- C. SuperiorShield Rollershield VB: Acrylic-based vapor barrier water resistive barrier.
- D. SuperiorShield Flashing Tape: A lightweight nonwoven joint treatment material.
- E. SuperiorShield Mesh Tape: A lightweight joint treatment material.
- F. SuperiorFlash: A single-component fluid applied flashing.

2.3 Master Wall® Stone/Thin Brick Adhesive: UltraBond, A ready to use dry base adhesive that is field mixed with water.

3.0 Installation

- 3.1 Inspect the substrate to ensure that it is free of all foreign materials that would affect application of the weather resistive barrier.
- 3.2 Install weather resistive barrier in accordance with building code requirements. Two layers or approved equivalent products.
- 3.3 Mechanically attach lath to the framing members at 6" (15 cm) centers. Lap lath in accordance with Master Wall Instructions and terminate base into a weep screed placed at least 1" over foundation and 4" minimum above grade, flash in accordance with Cemplaster Fiberstucco instructions.
- 3.4 Apply a minimum 3/8" coat of Cemplaster Fiberstucco, embedding it completely into the metal lath. Finish surface flat with no exposed lath and allow to cure for at least 3-5 days until the surface is hard and dry.
- 3.5 Inspect the substrate to ensure that it is free of all foreign materials that would affect the adhesion of the Rollershield air and water barrier.
- 3.6 Apply the Rollershield products in accordance with the product data sheets, minimum two coats or a single coating with a dry mil thickness of at least 22 mils.
- 3.7 Adhere ICC-ES AC51-compliant stone or thin brick using UltraBond, mixed following data sheet instructions. Allow to cure before proceeding with mortar application.
- 3.8 Mortar with approved mortar, mixed with water following data sheet instructions. Place in joints using a grout bag or similar device and rake/tool when thumb print hard.
- 3.9 Allow the wall system to cure and protect from weather for at least 72 hours before placing in service.

Information contained in this product data sheet conforms to the standard detail recommendations and specifications for the installation of Master Wall Inc.® products and is presented in good faith. Master Wall Inc.® assumes no liability, expressed or implied as to the architecture, engineering, or workmanship of any project. This information may be concurrent with, or superseded by other applicable documents, such as specifications and details. Contact Master Wall Inc.® for the most current product information. ©2025 Master Wall Inc.®



PRODUCT AND SYSTEM TESTING



Master Wall Inc.
Building a Culture of Excellence



MASTER WALL® SYSTEMS SPECIFICATION FACT SHEET

- Manufacturer of EIFS, Stucco and Coatings since 1987
- Committed and focused specifically on our industry; privately held and American owned.
- Pioneer in CIFS® (Continuous Insulation and Finish Systems)
- Leader in specialty finishes; CIFS® Wood Grain, CIFS® Brick, Hydrophobic Finishes, Metallics, SuperiorCote coatings
- AWCI Certified EIFS Professional (CEP) accredited Sales and Technical Force
- AIA MasterSpec listed, AIA CES Registered Provider
- Industry Leadership
 - EIMA (EIFS Industry Members Association) – Manufacturer Member and Current President
 - NOCSA (National One Coat Stucco Association) – Manufacturer Member and Current President
 - SMA (Stucco Manufacturer's Association) – Manufacturer Member and Board Member
 - ABAA (Air Barrier Association of America) – Manufacturer Member
 - AWCI (Association of the Wall and Ceiling Industry) – Member
 - FWCCA (Florida Wall & Ceiling Contractors Association) – Member
- Code Compliant EIFS, CIFS® Stucco and Air Barrier Systems (ICC, Miami Dade and Florida Building Code recognized systems)
- Full-service product support including sales and technical aspects of your project
- Labor and Material Limited Warranties exceeding other manufacturers ranging up to 20 years including Single-source envelope warranties with approved Sealant manufacturers.
- DuroTone High Performance Tint Pigments for Improved Color Retention (5-year fade warranty)
- Manufacturing strategically located in Stonecrest GA, Brookshire TX and Payson UT
- Nationwide distributor network that serves most major markets



Master Wall Inc. continuously tests our products and systems to meet the most current building codes.

FIRE TESTING			
Test	Test Method	Criteria	Results
Fire Resistance	ASTM E119	No effect on the fire resistance of a rated wall assembly	See Technical Bulletin MW#168-030111 for assemblies
Ignitability	NFPA 268 (BOCA 99/1407.0)	No ignition at 12.5 kw/m ² at 20 minutes	Pass
Intermediate Multi-Story Fire Test	NFPA 285 (UBC 26-9)	<ol style="list-style-type: none"> 1. Resist flame propagation over the exterior surface 2. Resist vertical spread of flame within combustible core/component of panel from one story to the next 3. Resist vertical spread of flame over the interior surface from one story to the next 4. Resist lateral spread of flame from the compartment of fire origin to adjacent spaces 	Pass
Surface Burning Characteristics— Base Coat, Mesh and Finish	ASTM E84	All components shall have a: Flame Spread < 25 Smoke Developed < 450	Flame Spread = 0 Smoke Developed = 0
Surface Burning Characteristics— Rollershield	ASTM E84	All components shall have a: Flame Spread < 25 Smoke Developed < 450	Flame Spread = 5 Smoke Developed = 5
Heat and Smoke Release Rates for Rollershield Air/ Water Barrier	ASTM E1354, IBC Section 1403.5, Exception 2 Requirements	Peak Heat Release Rate <150 kWm ² Total Heat Release Rate <20 MJ/m ² , Effective Heat of Combustion <18 MJ/kg	RS: Peak Heat Release Rate = 32 kWm ² , Total Heat Release Rate = 3.6 MJ/m ² , Effective Heat of Combustion = 2.5 MJ/kg, VB: Peak Heat Release Rate = 336 kWm ² , Total Heat Release Rate = 8.8 MJ/m ² , Effective Heat of Combustion = 9.3 MJ/kg

MESHES AND INSULATION BOARD			
Test	Test Method	Criteria	Results
Reinforcing Mesh Alkali Resistance of Reinforcing Mesh	ASTM E2098 (formerly EIMA 105.01)	>21dN/cm (120 pli) retained tensile strength after exposure	Pass
EPS (Physical Properties)			
Density	ASTM C303, D1622	15.2-20.0 kg/m ³ (0.95-1.25 lb/ft ³)	Pass
Thermal Resistance	ASTM C177, C518	4.0 @ 4.4 °C (40 °F)	Pass
Water Absorption	ASTM C272	3.6 @ 23.9 °C (75 °F)	
Oxygen Index	ASTM D2863	2.5 % max. by volume	Pass
Compressive Strength	ASTM D1621 Proc. A	24% min. by volume	Pass
Flexural Strength	ASTM C203	69 kPa (10 psi) min.	Pass
Flame Spread	ASTM E84	172 kPa (25 psi) min.	Pass
Smoke Developed		25 max. 450 max.	Pass Pass



EIFS & COATING

Test	Test Method	Criteria	Results
Abrasion Resistance	ASTM D968	No deleterious effects after 500 liters (528 quarts)	Pass
Accelerated Weathering	ASTM G155 Cycle 1	No deleterious effects after 2000 hours	Pass
Accelerated Weathering	ASTM G23 (G152 & 153)	No deleterious effects after 2000 hours	Pass
Accelerated Weathering	ASTM G53	No deleterious effects after 2000 hours (QUV)	Pass
Freeze-Thaw	ASTM E2485 (formerly EIMA 101.01)	No deleterious effects after 60 cycles	Pass
Freeze-Thaw	ASTM C67 modified/ICBO AC24	No deleterious effects after 10 cycles	Pass
Freeze-Thaw	ASTM E2485/ICC-ES Proc. ICC ES (AC 235)***	No deleterious effects after 10 cycles	Pass
Mildew Resistance	ASTM D3273	No growth during 28 day exposure period	Pass
Water Resistance	ASTM D2247	No deleterious effects after 14 days exposure	Pass
Impact	ASTM D5420	Gardner Impact Falling Weight	Pass
Salt Spray Resistance	ASTM B 117	No deleterious effects after 300 hours exposure	Pass
Water Penetration	ASTM E331 ICC ES (AC 235)***	No water penetration beyond the inner-most plane of the wall after 15 minutes at 137 Pa (2.86 psf)	Pass at 2.86 psf (137 Pa), 6.24 psf (299 Pa), and 12.0 psf (575 Pa) consecutively
Water Vapor Transmission	ASTM E 96 Water Method	Vapor permeable perm (ng/Pa.s.m ²)	EPS 5 perm-inch (114) Base Coat* 12 (679) Finish** 12 (674)
Component-Specific Weather Protection	IBC 1403	2-hour water test of EIFS and specific components	Pass
Drainage Efficiency	ASTM E 2273 ICC ES (AC 235)***	Minimum Drainage Efficiency of 90%	Aggre-flex Drainage 97.8% Rollershield Drainage 99.2% QRW1 Drainage 97.8%
* Base Coat perm value based on Master Wall F&M ** Finish perm value based on Master Wall Perfect Texture *** AC 235 (ASTM E 2568) – Acceptance Criteria for EIFS Clad Drainage Wall Assemblies			
Tensile Bond	ASTM C297/E2134	Minimum 15 psi (104 kPa) – substrate or insulation failure	Plywood/EPSA 67 psi (464) OSB/ EPSA 22 psi (152) Brick/F&M 105 psi (728) Concrete/F&M 94 psi (651) Gypsum/F&M 30 psi (208)
Tensile Bond	ASTM D897	Bond strength before and after 2000 hours florescent UV condensation weathering.	Before 24.6 psi After 22.7 psi
Transverse Wind Load	ASTM E330	Withstand positive and negative wind loads as specified by the building code	Pass. Assemblies vary from 68-287 psf*
* Ultimate wind loads – contact Master Wall for specific assemblies.			



IMPACT RESISTANCE (ASTM E2486/EIMA 101.86)

Description	OZ/SY	IN-LB Results	Joules	EIMA Classification
Standard Mesh	4.5	50-89	6-10	Medium
Hi-Tech Mesh	6.0	50-89	6-10	Medium
Medium Mesh	10.4	50-89	10-17	Medium
Medium & Standard Mesh	10.4 & 4.5	90-150	10-17	High Impact
Strong & Standard Mesh	15.0 & 4.5	Over 150	>17	Ultra High Impact
Ultra & Standard Mesh	21.0 & 4.5	Over 150	>17	Ultra High Impact

CEMPLASTER FIBERSTUCCO

Test	Test Method	Criteria	Results
Finishes & Coatings	Varies		Reference EIFS & Coatings Data
Freeze-Thaw	ICC AC11	No deleterious effects after 10 cycles	Pass
Transverse Load	ICC AC11/ASTM E330	Withstand positive and negative wind loads as specified by the building code	Pass. Assemblies vary from 81-124 psf*
Compressive Strength	ASTM C109	Average load for cured sample	1910 psi
Fire Resistance	ASTM E119	No effect on the fire resistance of a rated wall assembly	See Technical Bulletin MW#168-030111 for assemblies
Combustibility	ASTM E136	Standard Test Method for Assessing Combustibility of Materials in a Vertical Tube Furnace at 750°C, Option A	Pass
Accelerated Weathering	ASTM G26/G155	No deleterious effects after 2000 hours	Pass

* Ultimate wind loads – contact Master Wall for specific assemblies.



ROLLERSHIELD LAB (LIQUID APPLIED AIR/WATER BARRIER)

Test	Test Method	Criteria	Results
Solids Content	Calculation		Rollershield RS – 69.52% solids by weight (55.05% by volume), Rollershield TG – 73.85% solids by weight (60.12% by volume), Rollershield VB – 68.19% solids by weight (52.97% by volume)
Tensile Bond	ASTM C297/E2134 ICC ES (AC 212)*	Minimum 15 psi (104 kPa)	Dens Glass Gold 31 (215), Exterior Gypsum 28 (194), OSB 40 (277), Plywood 79 (563), Cement Board 70 (485), Copper 185 (1282), Galvanized steel 180 (1248), PVC 168 (1165), Aluminum 184 (1275), Coated Aluminum 203 (1407), Stainless Steel 183 (1269)
Freeze-thaw	ASTM E2485/ICC-ES Proc. ICC ES (AC 212)*	No deleterious effects after 10 cycles	Pass: Plywood, Cement Board, OSB, Exterior Gypsum (ASTM C79/C1396) and Dens Glass Gold (ASTM C1377) substrates
Water Resistance	ASTM D2247 ICC ES (AC 212)*	No deleterious effects after 14 days exposure ¹	Pass: Plywood Cement Board, OSB, Exterior Gypsum (ASTM C79/C1396) and Dens Glass Gold (ASTM C1377) substrates
Water Vapor Transmission	ASTM E96 Proc. B ICC ES (AC 212)*	Vapor Permeable	30 perms (Rollershield RS) ² 12 perms (Rollershield TG) 0.07 perms desiccant (A), 1.35 perms water (B)(Rollershield VB)
Air Permeance	ASTM E2178	No ICC or ANSI/EIMA Criteria ASHRAE/IECC max. 0.004 cfm/ft ² @ 1.57 psf	0.001 cfm/ft ² @ 1.57 psf 0.001 L/s/m ² @ 75 Pa
Air Leakage	ASTM E2357	No ICC or ANSI/EIMA Criteria ASHRAE/IECC max. 0.04 cfm/ft ² @ 1.57 psf	0.0006 cfm/ft ² @ 1.57 psf, 0.003 L/s/m ² @ 75 Pa 0.04 cfm/ft ² @ 6.24 psf, 0.02 L/s/m ² @ 300 Pa
Structural Performance	ASTM E1233 Proc. A ICC ES (AC 212)*	Minimum 10 positive cycles at 1/240 deflection; No cracking in field, at joints or interface with flashing	Pass
Racking	ASTM E72 ICC ES (AC 212)*	No cracking in field, at joints or interface with flashing at net deflection of 3.2 mm (1/8 inch)	Pass
Restrained Environmental	ICC-ES Procedure ICC ES (AC 212)*	5 cycles; No cracking in field, at joints or interface with flashing	Pass
Water Penetration	ASTM E331 ICC ES (AC 212)*	No water penetration beyond the inner-most plane of the wall after 15 minutes at 137 Pa (2.86 psf)	Pass
UV Exposure	ICC ES Proc. ICC ES (AC 212)*	210 hours of exposure, rated for 6 months of exposure	Pass
Accelerated Aging	ICC ES Proc. ICC ES (AC 212)*	25 cycles of wetting and drying	Pass
Hydrostatic Pressure Test	AATCC 127 ICC ES (AC 212)*	ICC: 549 mm (21.6 in) water column for 5 hours	Pass
Surface Burning Characteristics	ASTM E84	Flame Spread < 25 Smoke Developed < 450	Pass
Intermediate Multi-Story Fire Test	NFPA 285 (UBC 26-9)	No flame spread with up to 4" insulation	Pass
Nail Sealability	ASTM D1970	Standard Specification for Self-Adhering Polymer Modified Bituminous Sheet Materials Used as Steep Roofing Underlayment for Ice Dam Protection	Pass (22 mils)
Heat and Smoke Release Rates	ASTM E1354, IBC Section 1403.5, Exception 2 Requirements	Peak Heat Release Rate <150 kW/m ² , Total Heat Release Rate <20 MJ/m ² , Effective Heat of Combustion <18 MJ/kg	RS: Peak Heat Release Rate = 32 kW/m ² , Total Heat Release Rate = 3.6 MJ/m ² , Effective Heat of Combustion = 2.5 MJ/kg, VB: Peak Heat Release Rate = 336 kW/m ² , Total Heat Release Rate = 8.8 MJ/m ² , Effective Heat of Combustion = 9.3 MJ/kg

* (AC212 – Acceptance Criteria for Water-Resistive Coatings Used as Water-Resistive Barriers over Exterior Sheathing, also referred to as ASTM E 2570

1. No cracking, checking, rusting, crazing, erosion, blistering, peeling, or delamination when viewed under 5x magnification
2. Defined as a Class III vapor retarder per the 2015 IBC and IRC





STUCCO ACCESSORIES

Stucco accessories are used to help gauge the thickness of stucco systems, help control stucco movement and form corners.

TYPICAL APPLICATION PROCEDURE

After satisfactory inspection of surfaces and correction of any deviations from specification requirements commence the Cemplaster Fiberstucco (CFS) installation in accordance with A or B below. Accessory type, depth, location, and orientation shall be included in the contract documents. Where masonry or concrete surfaces vary in plane, plaster thickness required to produce level surfaces shall not be required to be uniform.

A. Installation over new cast-in-place concrete or concrete masonry units (unreinforced):

1. Install foundation weep screed at the base of the wall as required.
2. Install casing beads at CFS terminations—doors, windows and other through wall penetrations. Install two-piece expansion joints, back-to-back casing beads or control joints at joints in the supporting construction, building expansion joints, where the CFS is to be installed over dissimilar construction or substrates, at changes in building height, at floor lines, columns, and cantilevered areas as directed on the construction documents. Install corner bead at outside corners and corner lath at inside corners (except where lathing is installed continuously through the corner). Install full accessory pieces where possible and avoid small pieces. Seal adjoining pieces by embedding ends in sealant if specified. Abut horizontal into vertical joint accessories. Attach at 6" (152 mm) on center into concrete/masonry with appropriate fasteners.

B. Installation over frame construction with sheathing and reinforced masonry with a WRB:

1. Weep Screed Installation
 - a. Install foundation weep screed at the base of the wall securely to framing with the appropriate fastener. Locate foundation weep screed so that it overlaps the joint between the foundation and framing by a minimum of 1" (25 mm). Locate the foundation weep screed minimum 4 inches (101 mm) above earth grade, 2" (51 mm) above finished grade (paved surfaces, for example).
2. Weather Protection
 - a. Weather barrier will lap onto foundation weep screed as noted in Master Wall® details.
 - b. Verify that WRB installation is complete.
3. Casing Bead and Expansion Joint Installation
 - a. Install casing beads at CFS terminations—doors, windows and other through wall penetrations. Install expansion joints (or back-to-back casing beads) at building expansion joints, where the CFS is to be installed over dissimilar construction or substrates, at changes in building height, at floor lines, columns, and cantilevered areas. Install full accessory pieces where possible and avoid small pieces. Seal adjoining pieces by embedding ends in sealant. Abut horizontal into vertical joint accessories. Attach at 6"(152 mm) centers into framing with appropriate fasteners. (Note: refer to architectural drawings for joint locations and accessory type. Moisture protection must be continuous behind joints and accessories.)
4. Control Joint Installation
 - a. Install control joints according to the type, location, ground dimension and orientation as indicated on the contract documents. Tack in place as insure proper alignment during the application of the lath. Wire tie control joints to lath at 6" (152 mm) on center if framing members are not present under the accessory.
 - b. Seal any exposed ends and edges preferably by setting them in sealant during installation to prevent water entry.

Accessory Materials

1. PVC, and CPVC D1784. or D4216
2. Galvanized Metal, A653/A653M with G60 or G90 coating.
3. Zinc, B69
4. Stainless Steel, A240/A240M Type 304 or 316
5. Anodized Aluminum Alloy, B221

Packaging

Typically 10' lengths

Typical Grounds

3/8" (9.5 mm), 1/2" (13 mm), 5/8" (16 mm), 3/4" (19 mm), 7/8" (22 mm)

Typical Profiles*

Weep Screed*, Casing Bead*, Drainage Screed, Corner Reinforcement, Expansion Joint*, Control Joint

*Perforated or Non-Perforated

Manufacturers

Amico Building Products 800-366-2642
www.amico-lath.com

CEMCO 800-775-2362
www.cemcosteel.com

ClarkDietrich 800-543-7140
www.clarkdietrich.com

Plastic Components 800-327-7077
www.plasticcomponents.com

Stockton Products 714-998-1196
www.stocktonproducts.com

Wind-Lock 800-872-5625
www.wind-lock.com

Product Test Standards

ASTM A653, ASTM B69, ASTM C841, ASTM C847, ASTM C926, ASTM C1063, ASTM D1784, ASTM C1861

STUCCO REINFORCEMENT

Lath reinforcement is used to reinforce the stucco.

TYPICAL APPLICATION PROCEDURE

Sheet Reinforcement

1. General—install metal lath with the long dimension at right angles to structural framing. Terminate lath at expansion joints and also at control joints where not surface applied. Stagger side laps a minimum of one framing member.
2. Seams/overlaps – Side laps shall be lapped a minimum of 1/2" (13 mm) and a maximum of 2" (50 mm). End laps shall be lapped a minimum of 1" (25 mm) and a maximum of 2" (50 mm). overlap side seams 1/2 inch (13 mm) and end seams a minimum 1-inch (25 mm). Overlap casing beads and expansion joints minimum 1 inch (25 mm) onto the narrow wing accessories and 2 inches over expanded flange accessories.
3. Attachment—fasten securely through sheathing into structural framing at 6 inches (152 mm) on center maximum vertically and 16-24 inches (41-61 cm) on center horizontally*. Wire tie horizontal laps at 8 inches (204 mm) on center at side laps, and where end laps occur between supports.
4. Paper-backed lath—follow installation as for metal lath. Lap lath over lath, not paper to lath overlap. For horizontal overlaps the paper backing must lap shingle style behind the lath-to-lath overlap.

Roll Reinforcement

1. General—unroll wire lath with the long dimension at right angles to structural framing. Terminate wire lath at expansion joints and also control joints where not surface applied. Stagger side laps a minimum of one framing member.
2. Seams/overlaps – Side laps shall be lapped a minimum of one mesh at sides and ends. Where end laps occur between framing members, the ends of the sheets shall be laced, or wire tied with tie wire a minimum of 0.0475 (1.21 mm) diameter.
3. Attachment—fasten securely through sheathing into structural framing at 6 inches (152 mm) on center maximum vertically and 16-24 inches (41-61 cm) on center horizontally*. Wire tie horizontal laps at 8 inches (204 mm) on center at side laps, and where end laps occur between supports.
(*Note: the type of fastener selected, its layout and pullout or withdrawal value from the supporting construction must be verified and approved by the project engineer/architect with respect to design wind load and local building code requirements).
4. Structa Wire Products – follow manufacturer's instructions for installation.

Additional Reinforcement

1. Apply Strip lath, minimum 4" x 12" (102 mm x 305 mm), in type and weights of selected lath at casing bead corners if control joints are not used off windows and doors.
2. Inside and Outside Corners - Install corner lath at inside corners and corner bead at outside corners over lath (except where lathing is installed continuously through the corner). Attach through lath into framing at 6 inches (152 mm) on center with appropriate fasteners.

Reinforcement Materials

1. PVC, D1784. or D4216
2. Galvanized Metal, A653/A653M with G60 or G90 coating.
3. Zinc, B69
4. Stainless Steel, A240/A240M Type 304 or 316

Common Reinforcement Types

No. 17 or 20 gauge galvanized steel woven wire fabric

2.5 lb./yd² (1.4 kg/m²) self-furred diamond mesh metal lath

3.4 lb./yd² (1.8 kg/m²) self-furred diamond mesh metal lath
ASTM C 847.

Adfors Fibalath

ClarkDietrich Twin Trac 2.5, Twin Trac 2.5/316, Structalath III, Structalath III/316

Manufacturers

Adfors 800-762-6694
adfors.com/fibalath

Amico Building Products 800-366-2642
amico-lath.com

CEMCO 800-775-2362
cemcosteel.com

ClarkDietrich 800-543-7140
clarkdietrich.com

K-Lath® 800-663-0955
treeisland.com

Plastic Components 800-327-7077
plasticcomponents.com

Product Test Standards

ASTM C847, ASTM C1032, ASTM C933,
ASTM C1764

Information contained in this product data sheet conforms to the standard detail recommendations and specifications for the installation of Master Wall Inc.® products and is presented in good faith. Master Wall Inc.® assumes no liability, expressed or implied as to the architecture, engineering, or workmanship of any project. This information may be concurrent with, or superseded by other applicable documents, such as specifications and details. Contact Master Wall Inc.® for the most current product information. ©2024 Master Wall Inc.®





Master Wall Inc.
Building a Culture of Excellence

PRODUCT DATA

CEMPLASTER FIBERSTUCCO

Master Wall® Cemplaster Fiberstucco is a fibered Portland cement-based bagged stucco with exceptional workability, open working time, water retention, early strength, shrinkage resistance and long-term durability.

FEATURES & BENEFITS

- Concentrate, mix with sand and water
- Fibered for better crack resistance
- Can be modified with Stucco Ad-Liquid for better tensile, compression and mold-resistance
- For application over lath or direct-applied to approved substrates
- Manufacturer Warranty

Application Temperature: 40°-110°F (5°-43°C)

Working Time: 1 hour

Set Time: 1-2 hours

Cure Time: 48-72 hrs at room temperature, working and drying time will vary with temperature and humidity.

JOB CONDITIONS

Air and substrate temperature for application of Cemplaster Fiberstucco must be 40°F (5°C) or higher and must remain 40°F (5°C) or higher for a minimum of 24 hours. Provide temporary protection to protect the wall system from damage until permanent flashings, caps and sealants are installed. Store materials in a dry place, within prescribed temperature limits and out of direct sunlight. Working and drying times are based upon normal room temperature conditions and will vary with temperature and humidity.

PREPARATION

Preparation - The substrate must be approved by Master Wall Inc.®, clean, dry, structurally sound and free of efflorescence, oil, grease, form release agents and curing compounds or anything that would affect bond. Painted surfaces are not acceptable and must be removed or metal lath applied. All sheathed applications must receive a minimum of 2-layers code-approved asphalt felt or equivalent.

Prepare smooth or non-absorbent solid substrates by one of the following methods or a combination; Sandblasting, chipping or acid etching, A dash-bond coat applied forcefully, Bonding compounds such as Master Wall® Stucco Ad-Liquid or BA57, Furred or self-furring metal plaster bases as per ASTM C1063.

Coverage per bag (sf/sm)*

3/8" (9.5 mm) thick: 80 sf (7.4 sm)

1/2" (12.7 mm) thick: 70 sf (6.5 sm)

3/4" (19 mm) thick: 40 sf (3.7 sm)

7/8" (22 mm) thick: 34 sf (3.1 sm)

**All coverage is approximate and depend upon substrate, details and individual application*

Packaging/Shelf Life/Storage

Packaging: 65/80 lb. (29.5/36 kg) moisture resistant bags.

Shelf Life: 1 year

Storage: Protect from weather in a cool dry area, with low humidity.

Technical Data

- ASTM C109 Compressive Strength -1900 psi
- ASTM E330 Wind-rated Assemblies -81-108 psf Ultimate Load
- ASTM G155 Accelerated Weathering - Pass
- ICC-ES AC11 Durability Testing - Pass
- ASTM E136 - Noncombustible
- ASTM C926 compliant following standard practices

Recognized in IAPMO UES ER-0887

APPLICATION PROCEDURE

Mixing Instructions: Each bag of Cemplaster Fiberstucco is mixed with 200 lbs (90.7 kg) of sand aggregate (ASTM C897 or ASTM C144) and clean, potable water (200 lbs is roughly 2.5 cubic feet (0.07 cubic meters) of clean, damp-loose sand or 2-3/4 Master Wall® pails, filled). Using a clean mixer, first add 1/2 to 2/3 the water required, 1/2 the sand, 1 bag Cemplaster Fiberstucco, then the rest of the sand and water to achieve the desired workability. Mix materials for 3 to 5 minutes after all materials are in the mixer. Total water content can vary between 4 to 6.5 gallons (15-24.5L). Stucco Ad-Liquid may also be used instead of an equal amount of water (up to 5 gallons, 18.9L). See system data sheet for specific levels required for increased warranties.

Tempering—The mixed stucco can be re-tempered one time within 1 hour. Material older than 1-1/2 hours should be discarded.

Application

Direct Applied to Masonry: Dampen absorptive masonry just before application with water or Master Wall® BA57 Bonding Agent.

Scratch Coat: apply Cemplaster Fiberstucco with sufficient pressure to key into and embed the metal lath (if used). Apply sufficient material, approximately half the Cemplaster Fiberstucco ground thickness to cover the metal lath and to permit scoring the surface. Score the Cemplaster Fiberstucco horizontally upon completion of each panel in preparation for brown coat if a “double back” application of a wet scratch and brown coat isn’t being used.

Brown Coat: as soon as the scratch coat is firm enough to receive the brown coat without damage, apply the brown coat with sufficient pressure to ensure intimate contact with the first coat to an approximate thickness as needed to bring the Cemplaster Fiberstucco to a uniform thickness that matches the grounds of the accessories. Use a rod or straight edge to bring the surface to a true, even plane. Fill depressions in plane with Cemplaster Fiberstucco.

After the Cemplaster Fiberstucco has become slightly firm float the surface lightly with a Darby or wood float to densify the surface and to provide a smooth, even surface.

CLEAN UP

Tools and equipment can be cleaned with soapy water while the Cemplaster Fiberstucco mixture is still wet.

Curing Recommendations

Cure following ASTM C926 guidelines or other method acceptable to the design professional for 48-72 hours. Mixes with Master Wall® Stucco Ad Liquid do not need moist curing.

Allow to cure until clean, dry and hard before finishing:

- Typically 7-14 days if no Master Wall® Stucco Ad Liquid is used.
- After 72 hours if Master Wall® Stucco Ad Liquid is used provided the Cemplaster Fiberstucco is clean, dry and hard.
- After 24 hours if using a leveling base coat (LBC).

Hazard: This chemical is not considered hazardous according to the OSHA Hazard Communication Standard 2012 (29 CFR 1910.1200).

WARNING: Products containing crystalline silica (airborne particles of respirable size) are known to the State of California to cause cancer. For more information go to www.p65Warnings.ca.gov.

VOC: Less than 50 g/L.

Approved Substrates

Self-furring Metal Lath

Concrete

Brick

Masonry

Others approved in writing

Information contained in this product data sheet conforms to the standard detail recommendations and specifications for the installation of Master Wall Inc.® products and is presented in good faith. Master Wall Inc.® assumes no liability, expressed or implied as to the architecture, engineering, or workmanship of any project. This information may be concurrent with, or superseded by other applicable documents, such as specifications and details. Contact Master Wall Inc.® for the most current product information. ©2022 Master Wall Inc.®



Master Wall Inc.
Building a Culture of Excellence

PRODUCT DATA

READY CEMPLASTER FIBERSTUCCO

Master Wall® Ready Cemplaster Fiberstucco is a fibered Portland cement-based bagged stucco with exceptional workability, open working time, water retention, early strength, shrinkage resistance and long-term durability.

FEATURES & BENEFITS

- Ready to use, mix with water
- Great for jobsites with limited space for on-site storage
- Fibered for better crack resistance
- Can be modified with Stucco Ad-Liquid for better tensile, compression and mold-resistance
- For application over lath or direct-applied to approved substrates
- Manufacturer Warranty

Application Temperature: 40°-110°F (5°-43°C)

Working Time: 1 hour

Set Time: 1-2 hours

Cure Time: 48-72 hrs at room temperature, working and drying time will vary with temperature and humidity.

JOB CONDITIONS

Air and substrate temperature for application of Ready Cemplaster Fiberstucco must be 40°F (5°C) or higher and must remain 40°F (5°C) or higher for a minimum of 24 hours. Provide temporary protection to protect the wall system from damage until permanent flashings, caps and sealants are installed. Store materials in a dry place, within prescribed temperature limits and out of direct sunlight. Working and drying times are based upon normal room temperature conditions and will vary with temperature and humidity.

PREPARATION

The substrate must be approved by Master Wall Inc.®, clean, dry, structurally sound and free of efflorescence, oil, grease, form release agents and curing compounds or anything that would affect bond. Painted surfaces are not acceptable and must be removed or metal lath applied. All sheathed applications must receive a minimum of 2-layers code-approved asphalt felt or equivalent.

Prepare smooth or non-absorbent solid substrates by one of the following methods or a combination; Sandblasting, chipping or acid etching, A dash-bond coat applied forcefully, Bonding compounds such as Master Wall® Stucco Ad-Liquid or BA57, Furred or self-furring metal plaster bases as per ASTM C1063.

Coverage perbag (sf/sm)*

3/8" (9.5 mm) thick: 22 sf (2 sm)

1/2" (12.7 mm) thick: 20 sf (1.8 sm)

3/4" (19 mm) thick: 11 sf (1 sm)

7/8" (22 mm) thick: 9.4 sf (0.9 sm)

**All coverage is approximate and depend upon substrate, details and individual application*

Packaging/Shelf Life/Storage

Packaging: 80 lb. (36 kg) moisture resistant bags.

Shelf Life: 6-12 months

Storage: Protect from weather in a cool dry area, with low humidity.

Technical Data

- ASTM C109 Compressive Strength 1900 psi
- ASTM E330 Wind-rated Assemblies 81-108 psf Ultimate Load
- ASTM G155 Accelerated Weathering - Pass
- ICC-ES AC11 Durability Testing - Pass
- ASTM E136 - Noncombustible
- ASTM C926 compliant following standard practices

Recognized in IAPMOUESER-0887

APPLICATION PROCEDURE

Mixing - Each bag of Ready Cemplaster Fiberstucco is mixed clean, potable water. Using a clean mixer, first add 1/2 to 2/3 the water required, 1 bag Ready Cemplaster Fiberstucco, then the rest of the water to achieve the desired workability. Mix materials for 3 to 5 minutes after all materials are in the mixer. Total water content can vary between 1 to 1.5 gallons (3.8-5.7L). Stucco Ad-Liquid may also be used instead of an equal amount of water. See system data sheet for specific levels required for increased warranties.

Tempering—The mixed stucco can be re-tempered one time within 1 hour. Material older than 1-1/2 hours should be discarded.

Application

Direct Applied to Masonry: Dampen absorptive masonry just before application with water or Master Wall® BA57 Bonding Agent.

Scratch Coat: apply Ready Cemplaster Fiberstucco with sufficient pressure to key into and embed the metal lath (if used). Apply sufficient material, approximately half the Ready Cemplaster Fiberstucco ground thickness to cover the metal lath and to permit scoring the surface. Score the Ready Cemplaster Fiberstucco horizontally upon completion of each panel in preparation for brown coat if a “double back” application of a wet scratch and brown coat isn’t being used.

Brown Coat: as soon as the scratch coat is firm enough to receive the brown coat without damage, apply the brown coat with sufficient pressure to ensure intimate contact with the first coat to an approximate thickness as needed to bring the Ready Cemplaster Fiberstucco to a uniform thickness that matches the grounds of the accessories. Use a rod or straight edge to bring the surface to a true, even plane. Fill depressions in plane with Ready Cemplaster Fiberstucco.

After the Ready Cemplaster Fiberstucco has become slightly firm float the surface lightly with a Darby or wood float to densify the surface and to provide a smooth, even surface.

CLEAN UP

Tools and equipment can be cleaned with soapy water while the Ready Cemplaster Fiberstucco mixture is still wet.

Curing Recommendations

Cure following ASTM C926 guidelines or other method acceptable to the design professional for 48-72 hours. Mixes with Master Wall® Stucco Ad Liquid do not need moist curing.

Allow to cure until clean, dry and hard before finishing:

- Typically 7-14 days if no Master Wall® Stucco Ad Liquid is used.
- After 72 hours if Master Wall® Stucco Ad Liquid is used provided the Cemplaster Fiberstucco is clean, dry and hard.
- After 24 hours if using a leveling base coat (LBC).

Hazard: This chemical is not considered hazardous according to the OSHA Hazard Communication Standard 2012 (29 CFR 1910.1200).

WARNING: Products containing crystalline silica (airborne particles of respirable size) are known to the State of California to cause cancer. For more information go to www.p65Warnings.ca.gov.

VOC: Less than 50 g/L.

Approved Substrates

Self-furring Metal Lath
Concrete
Brick
Masonry
Others approved in writing

Information contained in this product data sheet conforms to the standard detail recommendations and specifications for the installation of Master Wall Inc.® products and is presented in good faith. Master Wall Inc.® assumes no liability, expressed or implied as to the architecture, engineering, or workmanship of any project. This information may be concurrent with, or superseded by other applicable documents, such as specifications and details. Contact Master Wall Inc.® for the most current product information.
©2022 Master Wall Inc.®



Master Wall Inc.®
Building a Culture of Excellence

PRODUCT DATA

CEMPLASTER FIBERSTUCCO CO-BRAND PRODUCTS

As part of our Cemplaster Fiberstucco Systems, Master Wall Inc.® allows select products as part of our warranty program. Warranties are available up to 20-years depending upon product selections and combinations.

FEATURES & BENEFITS

- Warranties up to 20-years through Master Wall Inc.®
- Preblended and Concentrate options
- Locally and regionally available for LEED compliance
- Engineered for consistency

Warranties for all projects will be provided by Master Wall® following our regular process. For coverage the following needs to be completed:

- Materials must be purchased through an authorized Master Wall® distributor.
- A warranty must be requested for the project, including all QUIKRETE® requirements noted on the request form.
- The applicator must be certified and current.
- To request a warranty go to the Tech/Support page at masterwall.com and fill out the form.

See our Systems page for Cemplaster Fiberstucco Warranties

Information contained in this product data sheet conforms to the standard detail recommendations and specifications for the installation of Master Wall Inc.® products and is presented in good faith. Master Wall Inc.® assumes no liability, expressed or implied as to the architecture, engineering, or workmanship of any project. This information may be concurrent with, or superseded by other applicable documents, such as specifications and details. Contact Master Wall Inc.® for the most current product information. ©2021 Master Wall Inc.®



Master Wall Inc.®
Building a Culture of Excellence

CO-BRAND PRODUCTS

QUIKRETE® One Coat Fiberglass Reinforced Stucco (FRS) (No. 1200 Sanded, No. 1216-Concentrated)

QUIKRETE® Base Coat Stucco Scratch & Brown (No. 1139) & Base Coat Stucco - Pump Grade (No. 1139-86)*

QUIKRETE® Base Coat Stucco with Water-Stop (No. 1139-89)*

QUIKRETE® Base Coat Stucco - Pump Grade (No. 1139-86)*

FRS Lightweight Stucco (No. 1201-56)*

SPEC MIX® SCRATCH AND BROWN FIBER REINFORCED STUCCO(SU-04)*

SPEC MIX® Scratch and Brown Preblended Stucco*

SPEC MIX® Fiber Base Coat (FBC)

WESTERN 1-Kote Gray Concentrate

WESTERN 1-Kote Gray Premium Concentrate

WESTERN 1-Kote Premium Sanded Gray

WESTERN 1-Kote Sanded Gray

*Apply these stucco products in accordance with ASTM C926 and Master Wall® requirements.



Master Wall Inc.®
Building a Culture of Excellence

PRODUCT DATA

ULTRABOND VENEER MORTAR ADHESIVE

UltraBond is a premium, polymer-fortified, adhesive mortar for the application of thin brick, synthetic and natural stone products, ceramic tile and quarry tile. UltraBond Veneer Mortar Adhesive mixes easily with water to a creamy consistency and is formulated with high initial grab and shear resistance.

FEATURES & BENEFITS

- Non-Sag
- Strong adhesion with Thin Brick and synthetic stone products
- Class leading shear bond strength
- Mixes easily with good open time
- Vapor Permeable - resists blistering and allows trapped water vapors to pass
- Freeze stable in dry form

Application Temperature: 40°-110°F (5°-43°C) Working Time: 1 hr. Set Time: 8-12 hrs. Dry Time: 12 hrs. at room temperature, working and drying time will vary with temperature and humidity.

SURFACE PREPARATION & MIXING

Job Conditions - Air and substrate temperature for application of UltraBond must be 40°F (5°C) or higher and must remain 40°F (5°C) or higher for a minimum of 24 hours. Provide temporary protection to protect the wall system from damage until permanent flashings, caps and sealants are installed. Store materials within prescribed temperature limits and out of direct sunlight. Working and drying times are based upon normal room temperature conditions and will vary with temperature and humidity.

Installer must verify that deflection IS L/360 minimum or greater in compliance with veneer structural requirements.

Preparation - The substrate must be approved by Master Wall Inc®, clean, dry, structurally sound and free of efflorescence, oil, grease, form release agents and curing compounds or anything that would affect bond. Painted surfaces are not acceptable and must be removed.

Mixing - Add 5 to 6 quarts (4.7-5.7 L) of potable water to a clean plastic pail. Add the UltraBond slowly while stirring using a heavy-duty 1/2" (12.7 mm) drill at 400 - 500 rpm and a heavy-duty mixer. Mix thoroughly to a homogeneous but stiff consistency. Let the mixture stand for 5 to 10 minutes and then remix without adding any more water or powder. During use, stir occasionally to keep mix fluffy. DO NOT temper with water. Excessive stirring may cause faster setting and reduced working time. Do not add accelerators or retarders to the UltraBond mixture.

Coverage per Bag *

1/4" x 3/8" (6 mm x 9 mm) Notched Trowel:
60-70 Ft², 5.6-6.5 m²

1/2" x 1/2" (12 mm x 12 mm) Notched
Trowel:
40-45 Ft², 3.7-4.2 m²

Adhered Masonry Veneer Application

Method:

30-33 Ft², 2.8-3.1 m²

**All coverage is approximate and depend upon substrate, details and individual application*

Packaging/Shelf Life/Storage

Packaging: 50 lb. (22.7 kg) bag

Shelf Life: 2 years

Storage: Protect from moisture and high humidity.

Technical Data

Compression (ASTM C270)

24 hours - 500 psi

7 day - 2700 psi

28 day - 3350 psi

Tensile (ANSI A118) Glazed/Mosaic

7 day - 315 psi / 305 psi

28 day - 500 psi / 290 psi

Shear Bond (ANSI A118.15) Glazed/Mosaic

7 day dry - 475 psi / 460 psi

7 day wet - 390 psi / 400 psi

28 day dry - 625 psi / 450 psi

Sag Resistance

(ISO 13007 24.2)

Quarry Tile - 0.0

Large Scale Tile - .485

Full Scale Stone - 0.0

Hazard: Considered hazardous by the 2012 OSHA Hazard Communication Standard (29 CFR 1910.1200)

VOC: Less than 50 g/L.

APPLICATION PROCEDURE

Prior to installation, ensure back of veneer units are clean of dust, laitance, loose concrete crumbs and any excess film that could impede bond. Porous and excessively dry substrates such as cement board, masonry or stucco may need to be wetted to avoid excessive absorption, allow to dry to the touch. Verify wetting requirements with the veneer manufacturer.

For adhered stone, thin brick and manufactured stone masonry veneers installations, use a gauging trowel to key a thin coat of UltraBond Veneer Mortar Adhesive to cover entire back of the veneer units. Spread additional mortar onto the back of the skim coated veneer sufficient to completely fill the space between the veneer and the substrate when compressed against the substrate (wet on wet). Press the mortar covered back of the veneer against the substrate at the desired final position. Slide the unit roughly 1 -1.5" (25-38 mm) diagonally from the desired final position and back into the desired position while maintaining even pressure. This should be done in such a manner as to squeeze the mortar to fill the entire space between the veneer unit and the substrate, allowing excess mortar to extrude on all sides around the veneer unit. Clean excess extruded mortar with trowel and spread onto the next veneer unit to be installed.

Alternate method for thin brick, tile, calcium silicate unit and stone installations: key UltraBond Veneer Mortar Adhesive into the substrate thoroughly. Then, comb on additional mortar with the notched side, use 1/4" x 3/8" (6 mm x 9 mm), 1/2" x 1/2" (12 mm x 12 mm) loop or notch trowel. Back butter all thin brick, veneer units 8" x 8" (200 mm x 200 mm), 3/4" (19 mm) loop trowel or larger to provide full bedding of the veneer. Place veneer into the mortar and adjust to desired position. Clean any excess mortar on sides of stone or tile veneer.

Note: Use proper sized notched trowel to ensure full bedding of the stone veneer. Spread only enough mortar for maximum coverage with tile within 15 -20 minutes. Trowel notch size determined by contractor, size of veneer and job-site coverage. Adjust as necessary. Check mortar for complete coverage by periodically removing veneer unit and inspecting the transfer onto substrate and back of the stone veneer. The size and weight of the veneer will vary. Due to job site conditions and differences in finish material types; ledger boards, shims, wedges or spacers may be required to maintain finish levels and heights.

Grouting/Pointing (if required) - When required, point installation after a minimum of 24 hours curing time at 70°F (21°C). With an approved premium grout or mortar.

Clean Up—Tools and equipment can be cleaned with soapy water while the UltraBond is still wet.

WARNING, THIS PRODUCT CONTAINS SILICA

If sanding or scraping are performed, ventilate work area and/or use a NIOSH/MSHA-approved respirator in accordance with our Safety Data Sheet.

Information contained in this product data sheet conforms to the standard detail recommendations and specifications for the installation of Master Wall Inc.® products and is presented in good faith. Master Wall Inc.® assumes no liability, expressed or implied as to the architecture, engineering, or workmanship of any project. This information may be concurrent with, or superseded by other applicable documents, such as specifications and details. Contact Master Wall Inc.® for the most current product information. ©2024 Master Wall Inc.®



Approved Substrates

Stucco (Scratch or Brown)
Mortar Parge Coat
Master Wall Base Coats
Durock®
PermaBase®
Util-A-Crete®
ProTEC®, ProGUARD®
Concrete
Brick
Masonry
Metal Lath
Adheres to Rollershield
Others approved in writing

Health & Safety

WARNING! Causes eye and skin irritation. Precautionary Statement Wash hands thoroughly after handling. Wear protective gloves/protective clothing/eye protection/face protection.

FIRST AID MEASURES

Eye Contact: Immediately flush eyes with plenty of water for at least 15 to 20 minutes. Ensure adequate flushing of the eyes by separating the eyelids with fingers. Get immediate medical attention.

Skin Contact: Immediately wash skin with plenty of soap and water for 15 to 20 minutes, while removing contaminated clothing and shoes. Get medical attention if irritation develops or persists.

Inhalation: If inhaled, remove to fresh air. If not breathing, give artificial respiration or give oxygen by trained personnel. Seek immediate medical attention.

Ingestion: If swallowed, do NOT induce vomiting. Call a physician or poison control center immediately. Never give anything by mouth to an unconscious person. Store locked up. Dispose of contents/container in accordance with Local, State, Federal and Provincial regulation.

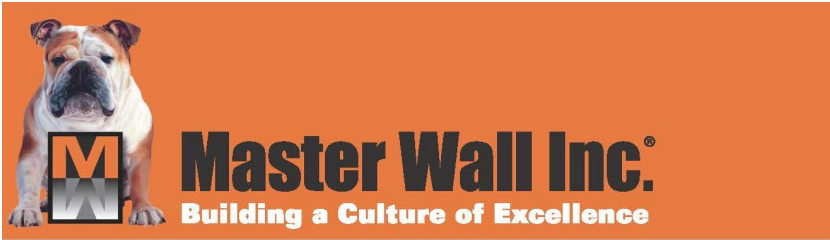
Spills: Collect with suitable absorbent material such as cotton rags.

Disposal: Dispose of in accordance with local, state or federal regulations.

Warning: KEEP CONTAINER CLOSED WHEN NOT IN USE. KEEP OUT OF THE REACH OF CHILDREN. NOT FOR INTERNAL CONSUMPTION. FOR INDUSTRIAL USE ONLY. Consult the Safety Data Sheet (SDS) in the Products section at masterwall.com for further health and safety information.

LIMITED WARRANTY

This product is subject to a written limited material or system warranty. Obtain a warranty from the Tech Support tab of our website. Refer to Specifications for more complete information on proper use and handling of this product.



SAMPLE WARRANTY

Master Wall® Light Masonry (LiMa) Program Limited Warranty

LiMa Assemblies LiMaW105, LiMaW205, LiMaM105, LiMaC105: 5 years
LiMa Assemblies LiMaW110, LiMaW210, LiMai310TV, LiMai410CB, LiMai510CB: 10 years
LiMa Assemblies LiMaW120, LiMaM120, LiMaM220, LiMaM320, LiMaM420: 20 years
LiMa Assemblies LiMaC130, LiMaC230: 30 years

Master Wall Inc.® warrants the properly designed and installed Master Wall Inc.® materials for the term noted above from the date of installation over the listed, approved Light Masonry (LiMa) assemblies. Subject to the conditions and limitations stated below, Master Wall Inc.® warrants that the products listed on this document will be free from manufacturing defects and will not break down or deteriorate under normal usage for term stated above from the date of purchase when installed in accordance with the written specifications of Master Wall Inc.® and industry standard guidelines. For this limited warranty to apply, the applications that comprise the installation must be performed with the products listed in this document for each application (LiMa Assemblies). Please refer to individual product data sheets for specific guidelines.

Substrate deflection under all live, dead and impact loads, including concentrated loads, must not exceed $L/360$ where L =span length. Applications must not exceed 30 ft (9.1 m) in height or 25,000 ft² (2,250 m²) in area. Installations must conform to all applicable building codes including the International Building Code (IBC) and International Residential Code (IRC) requirements.

DISCLAIMER

THIS LIMITED WARRANTY IS GIVEN IN LIEU OF ANY OTHER WARRANTY, EXPRESS OR IMPLIED. THERE ARE NO WARRANTIES, EXPRESS OR IMPLIED, INCLUDING WARRANTIES BASED ON SAMPLES OR ORAL STATEMENTS, WHICH EXTEND BEYOND THE DESCRIPTION ON THE FACE OF THIS DOCUMENT. IMPLIED WARRANTIES OF MERCHANTABILITY AND OF FITNESS FOR A PARTICULAR PURPOSE ARE EXCLUDED.

EXCLUSIONS

Master Wall Inc.® is not responsible for workmanship not in accordance with the instructions of Master Wall Inc. and industry standard guidelines. Cracking due to structural movement, excessive deflection or other failure in the substrate is also not covered. Master Wall Inc.® IS NOT LIABLE FOR ANY INCIDENTAL DAMAGES OR CONSEQUENTIAL DAMAGES, INCLUDING LOSSES DUE TO DELAYS, INCURRED BY THE PURCHASER OR ANY OTHER PARTY.

NO ASSIGNMENT

This limited warranty is not transferable or assignable.

EXCLUSIVE REMEDY

The sole and exclusive remedy for a breach of this limited warranty is replacement of only the specific portion of the installation that is proven to be defective*. Master Wall Inc.® will pay for replacement of its own products and replacement of finishing materials, as well as for labor for the replacement installation, but Master Wall Inc. will not pay more, calculated on a square-foot (square-meter) basis, for the replacement than the original purchase price of the portion being replaced. Master Wall Inc.® will not pay for the replacement of any portion of the installation that is not proven to be defective.

In the event that the sole and exclusive remedy described above fails of its essential purpose, the liability of Master Wall Inc.® is limited to the monetary value, on a square-foot (square-meter) basis, of the original purchase price of the portion being replaced.

* NOTE: Efflorescence is a normal condition of Portland cement mortars and is not a defective condition.

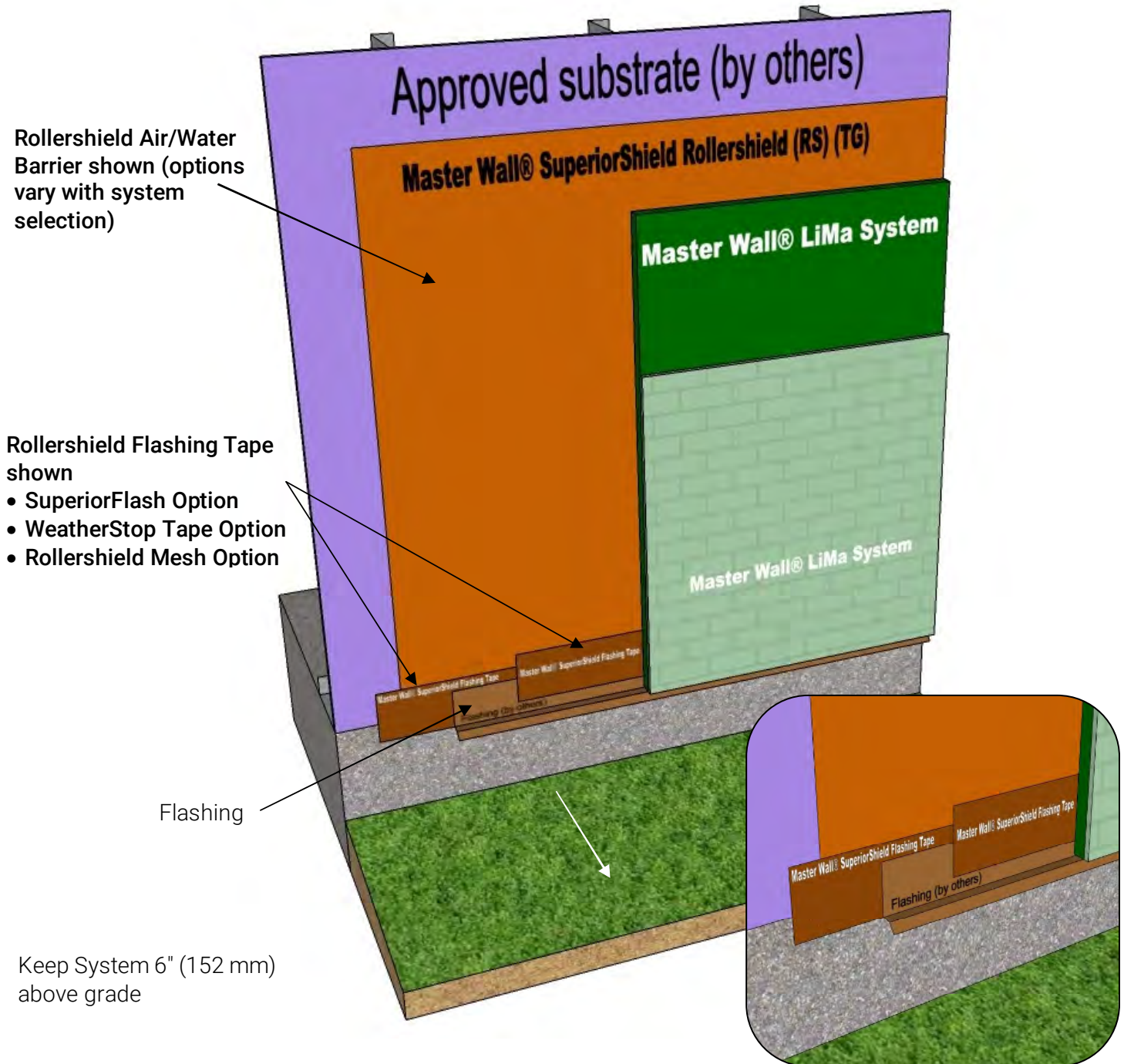
This warranty becomes effective only when all bills for the components of the system have been paid.

Except as stated, Master Wall, Inc.®, expressly disclaims any warranty of merchantability or fitness for a particular purpose. The above remedies are to be deemed exclusive.



This is not the final warranty. For a valid warranty fill out a warranty request under Tools and Technical at masterwall.com. Warranties are not valid until issued.

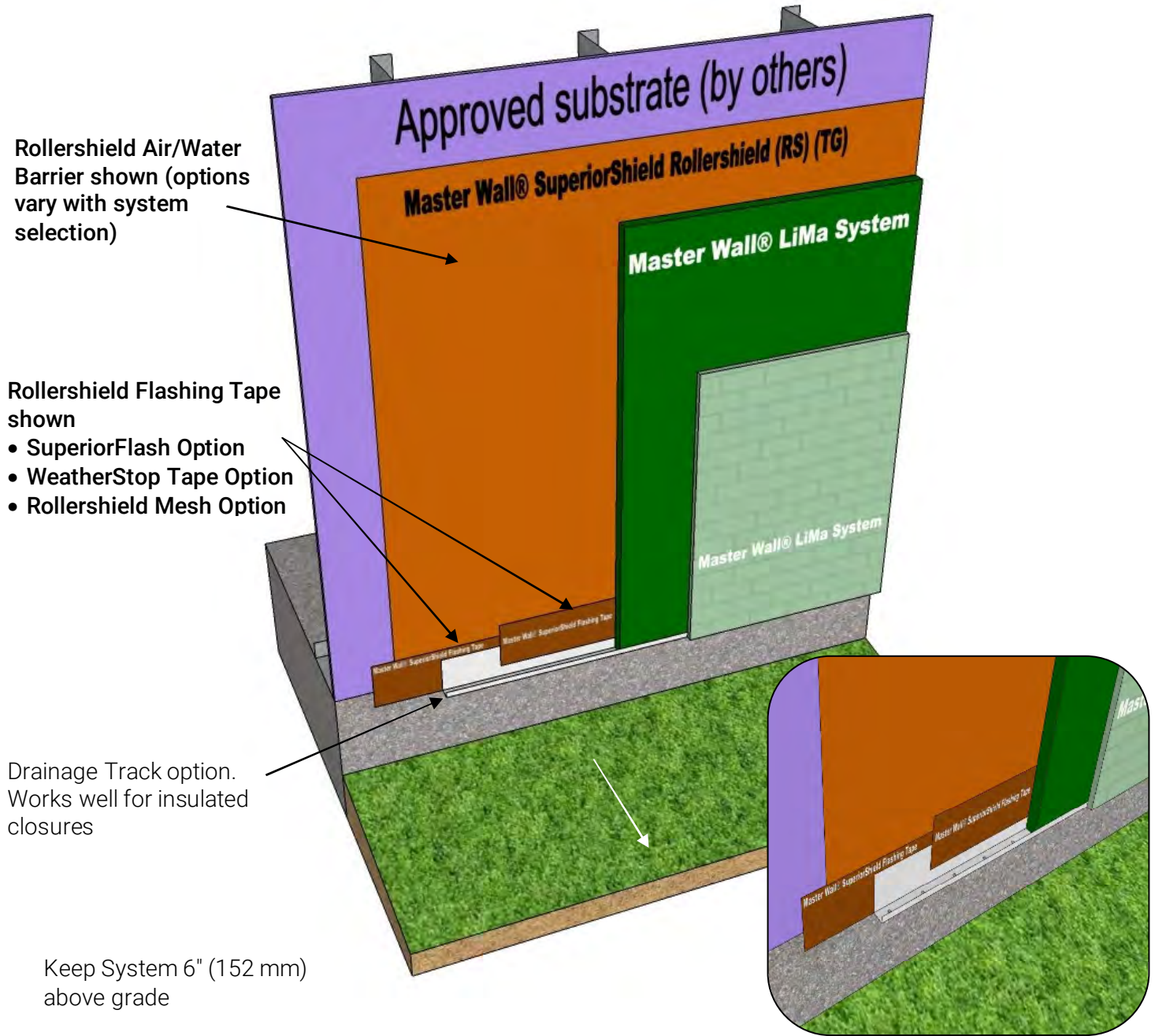
System Detail



LiMa D-01Detail @ Grade

These drawings relay the conceptual conditions of Master Wall® Systems and are not the construction drawings. Ultimately the design and detailing of an entire wall system is the responsibility of a professional. These details will guide the design professional in the use of Master Wall® Products. Master Wall disclaims design, warranty or construction intent or responsibility. **Bold or Trade Name = Master Wall® Product.**

System Detail



LiMa D-02 Detail @ Grade

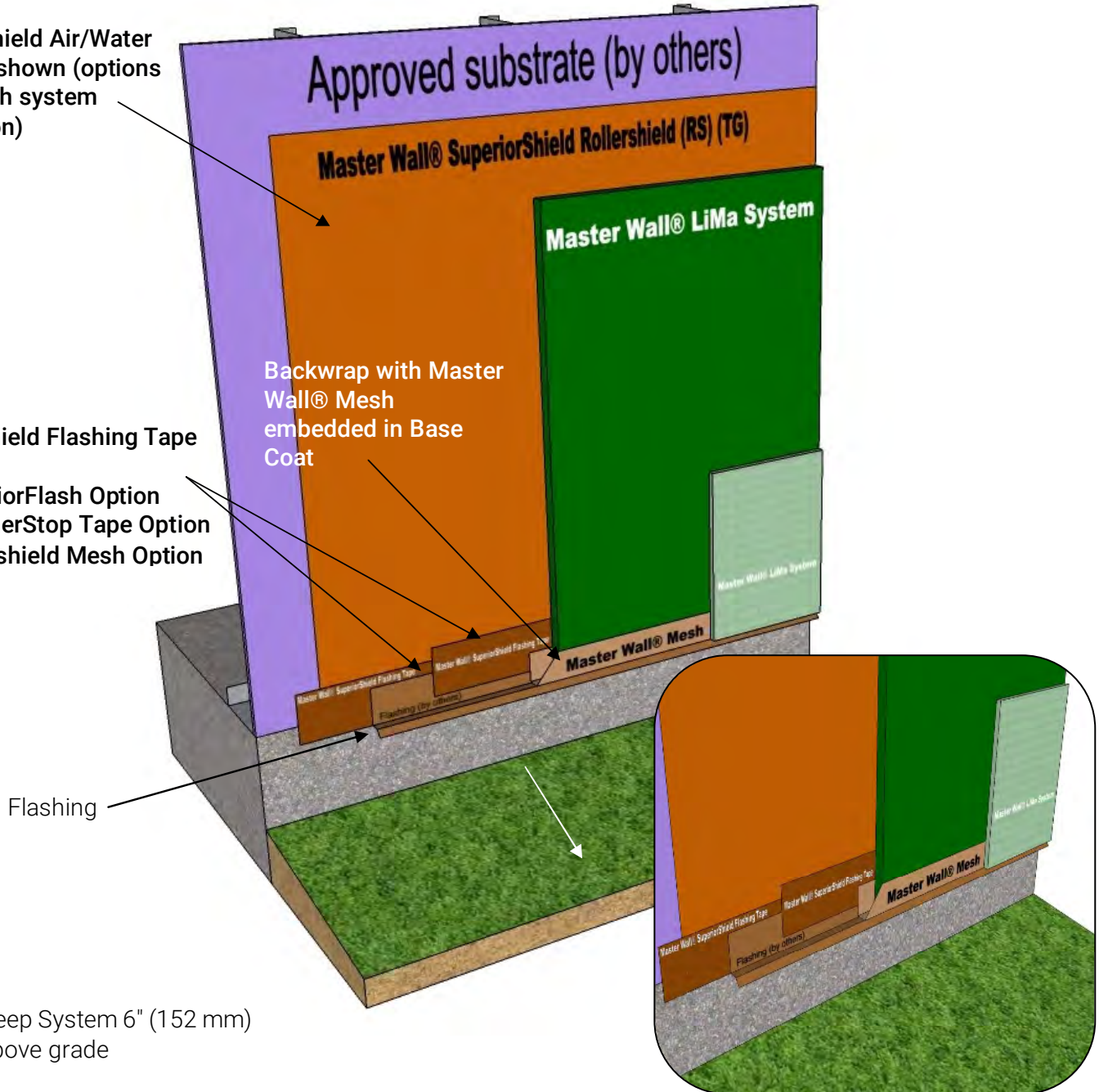
These drawings relay the conceptual conditions of Master Wall® Systems and are not the construction drawings. Ultimately the design and detailing of an entire wall system is the responsibility of a professional. These details will guide the design professional in the use of Master Wall® Products. Master Wall disclaims design, warranty or construction intent or responsibility. **Bold or Trade Name = Master Wall® Product.** ©2020 Master Wall Inc.®

System Detail

Rollershield Air/Water Barrier shown (options vary with system selection)

Rollershield Flashing Tape shown

- SuperiorFlash Option
- WeatherStop Tape Option
- Rollershield Mesh Option

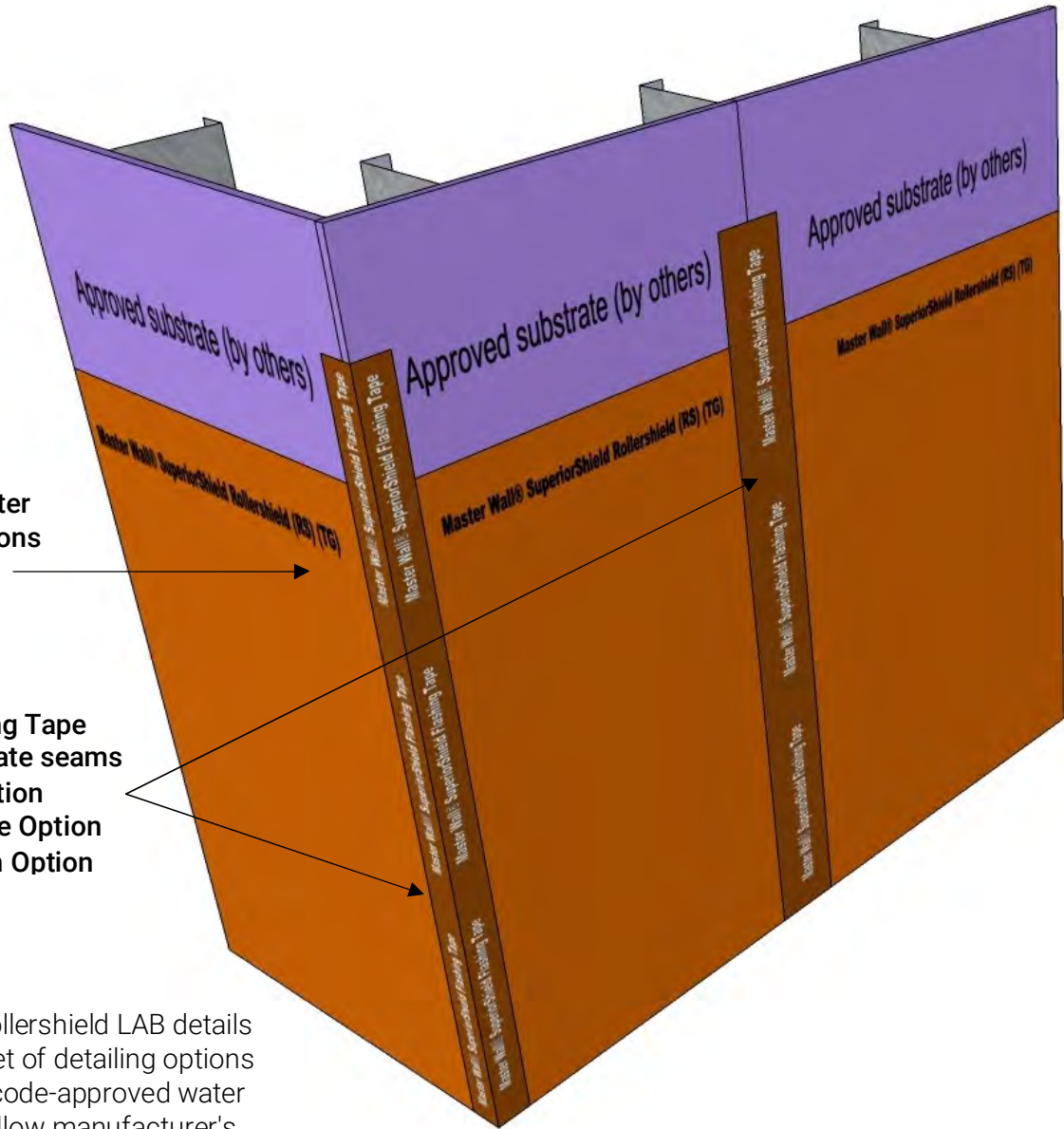


Keep System 6" (152 mm) above grade

LiMa D-03 Detail @ Grade

These drawings relay the conceptual conditions of Master Wall® Systems and are not the construction drawings. Ultimately the design and detailing of an entire wall system is the responsibility of a professional. These details will guide the design professional in the use of Master Wall® Products. Master Wall disclaims design, warranty or construction intent or responsibility. **Bold or Trade Name = Master Wall® Product.**

System Detail



Rollershield Air/Water Barrier shown (options vary with system selection)

Rollershield Flashing Tape shown @ all substrate seams

- SuperiorFlash Option
- WeatherStop Tape Option
- Rollershield Mesh Option

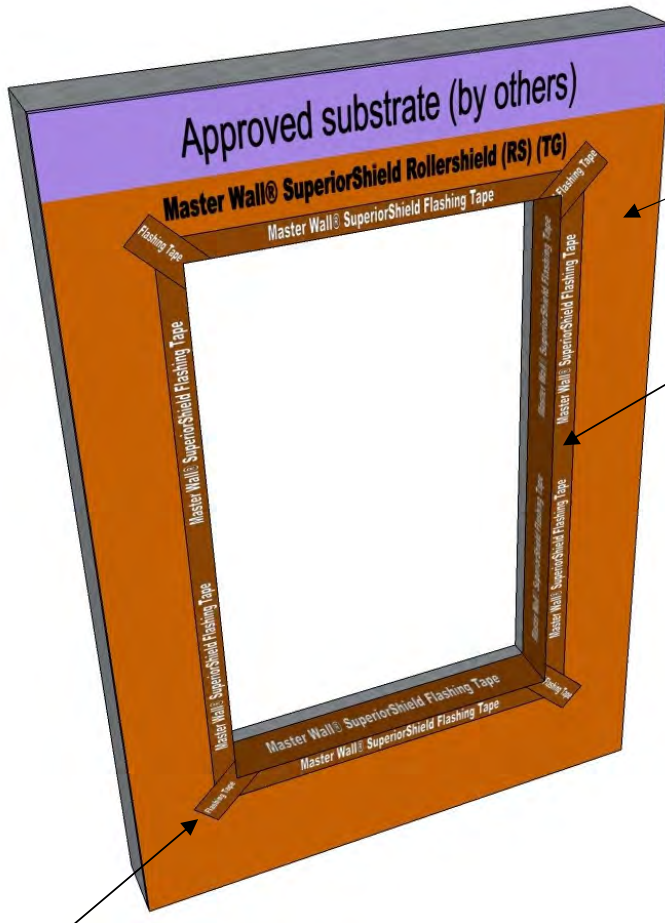
Notes:

- See the Rollershield LAB details for a full set of detailing options
- For other code-approved water barriers follow manufacturer's instructions

LiMa D-04 Rollershield LAB Seam Details

These drawings relay the conceptual conditions of Master Wall® Systems and are not the construction drawings. Ultimately the design and detailing of an entire wall system is the responsibility of a professional. These details will guide the design professional in the use of Master Wall® Products. Master Wall disclaims design, warranty or construction intent or responsibility. **Bold or Trade Name = Master Wall® Product.**

System Detail



Rollershield Air/Water Barrier shown (options vary with system selection)

Rollershield Flashing Tape shown @ all substrate seams and turned into window opening at least the depth of the window unit

- SuperiorFlash Option
- WeatherStop Tape Option
- Rollershield Mesh Option

Rollershield Flashing Tape shown adhered over flashing

Window Head Flashing



Flanged Window Shown - Install per manufacturer's requirements

Diagonal Rollershield Flashing Tape shown

- SuperiorFlash Option
- WeatherStop Tape Option
- Rollershield Mesh Option

Notes:

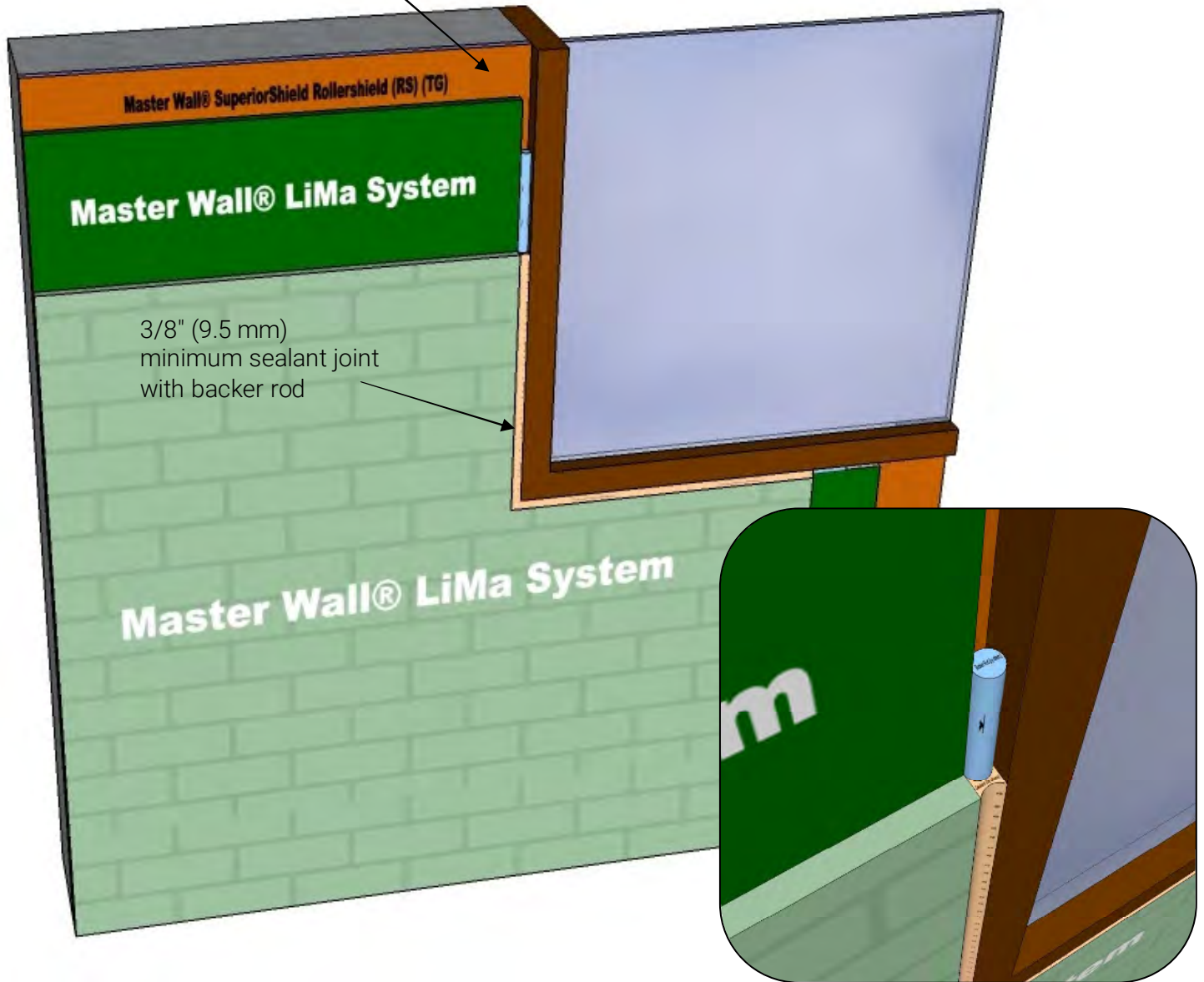
- See the Rollershield LAB details for a full set of detailing options
- For other code-approved water barriers follow manufacturer's instructions

LiMa D-05 Window Opening

These drawings relay the conceptual conditions of Master Wall® Systems and are not the construction drawings. Ultimately the design and detailing of an entire wall system is the responsibility of a professional. These details will guide the design professional in the use of Master Wall® Products. Master Wall disclaims design, warranty or construction intent or responsibility. **Bold or Trade Name = Master Wall® Product.**

System Detail

Rollershield Air/Water Barrier shown
(options vary with system selection)

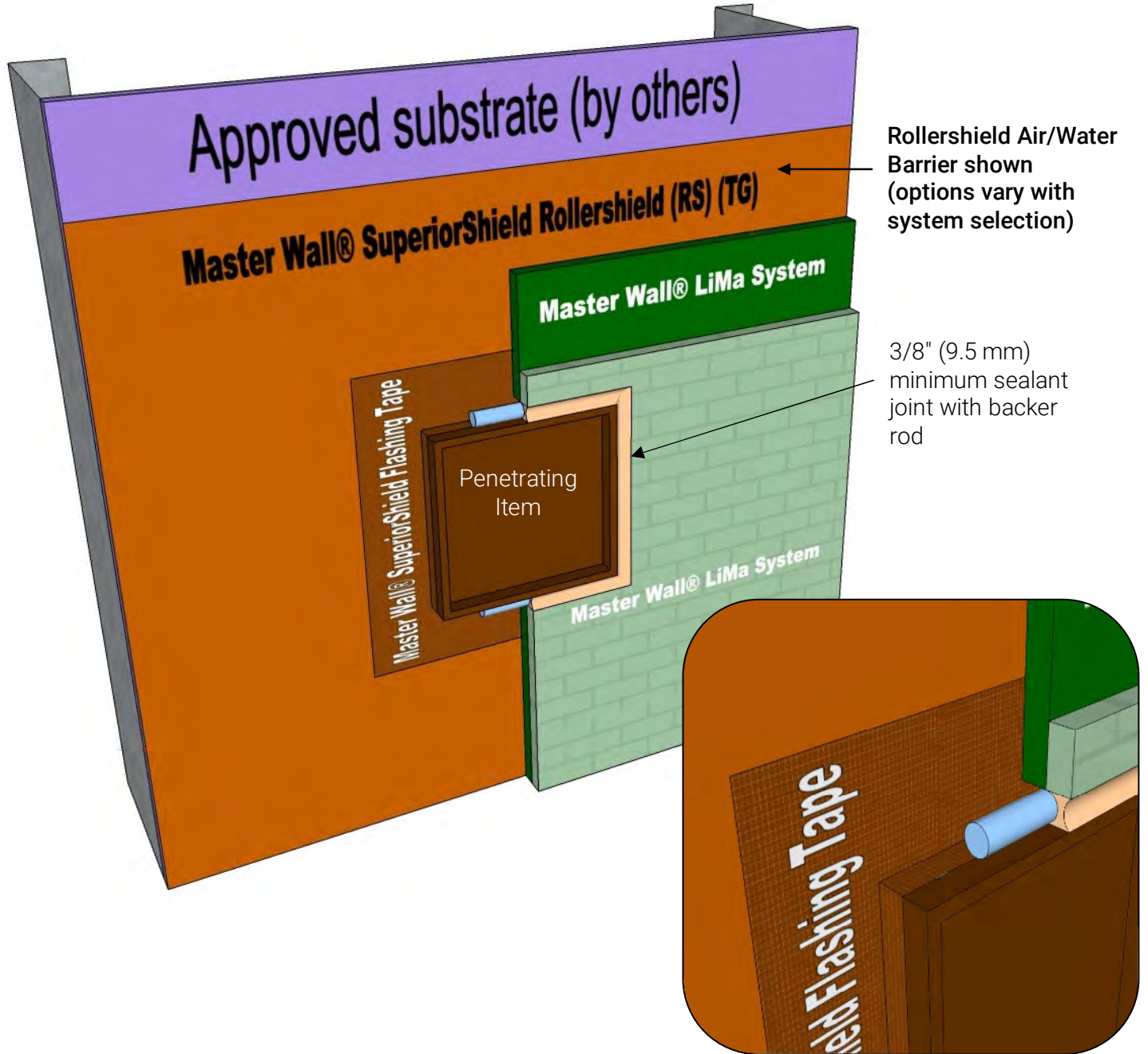


LiMa D-06 LiMa to Window Detail

These drawings relay the conceptual conditions of Master Wall® Systems and are not the construction drawings. Ultimately the design and detailing of an entire wall system is the responsibility of a professional. These details will guide the design professional in the use of Master Wall® Products. Master Wall disclaims design, warranty or construction intent or responsibility. **Bold or Trade Name = Master Wall® Product.**

©2020 Master Wall Inc.®

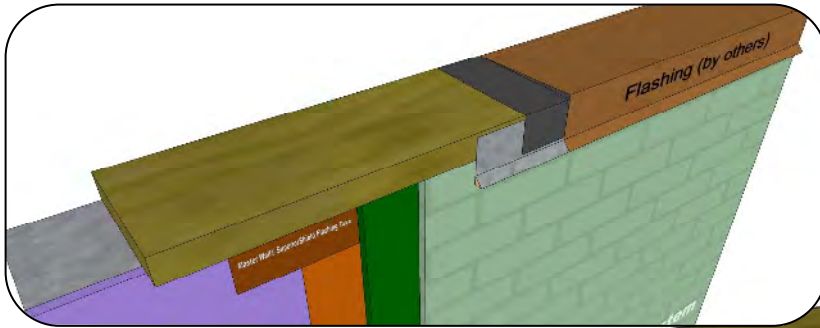
System Detail



LiMa D-07 LiMa to Wall Penetration Detail

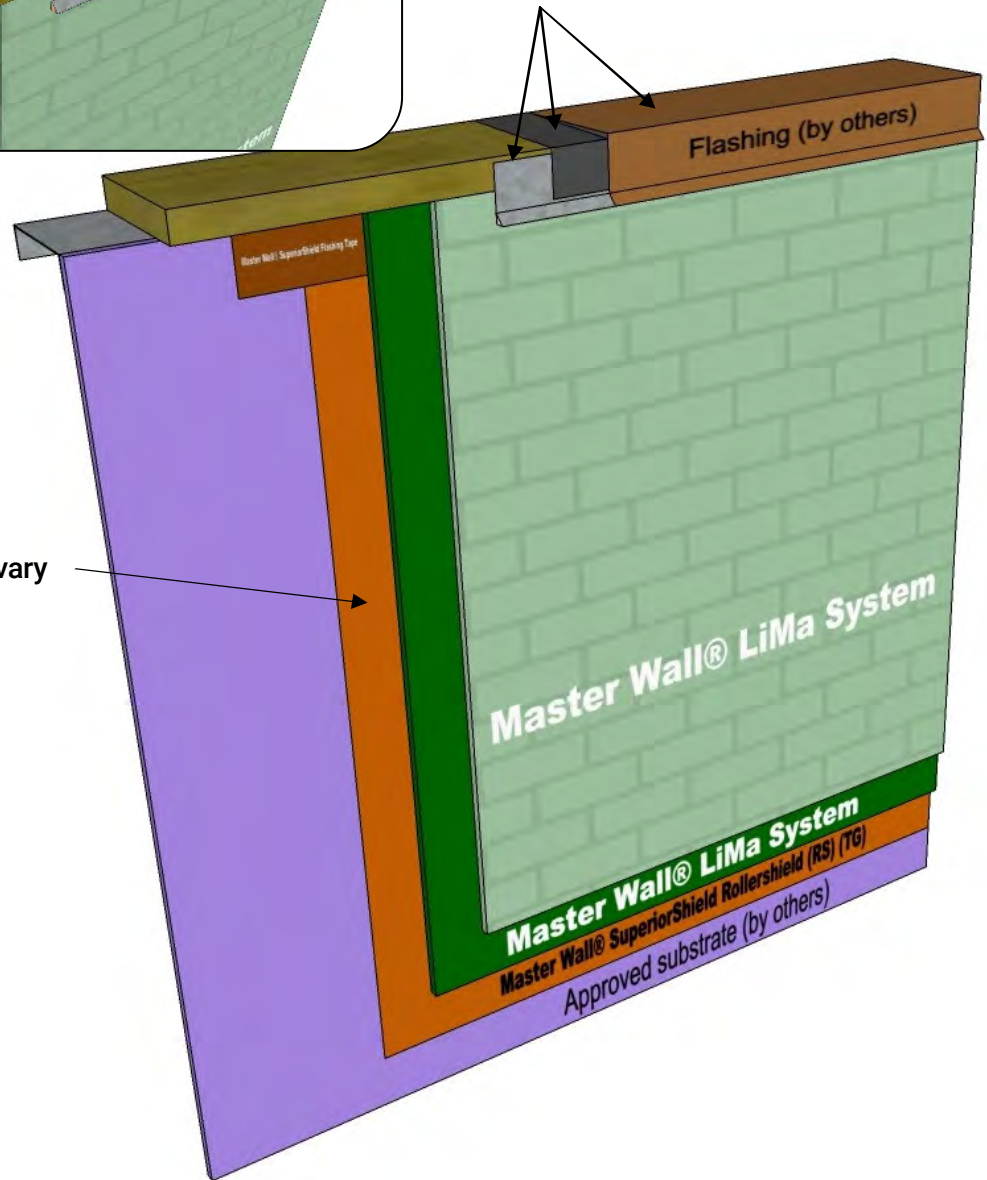
These drawings relay the conceptual conditions of Master Wall® Systems and are not the construction drawings. Ultimately the design and detailing of an entire wall system is the responsibility of a professional. These details will guide the design professional in the use of Master Wall® Products. Master Wall disclaims design, warranty or construction intent or responsibility. **Bold or Trade Name = Master Wall® Product.** ©2020 Master Wall Inc.®

System Detail



Parapet cap, secondary protection and continuous cleat. Extend 2" (51 mm) minimum over the system and seal lower edge.

Rollershield Air/Water Barrier shown (options vary with system selection)



LiMa D-08 Parapet Cap Detail

These drawings relay the conceptual conditions of Master Wall® Systems and are not the construction drawings. Ultimately the design and detailing of an entire wall system is the responsibility of a professional. These details will guide the design professional in the use of Master Wall® Products. Master Wall disclaims design, warranty or construction intent or responsibility. **Bold or Trade Name = Master Wall® Product.**

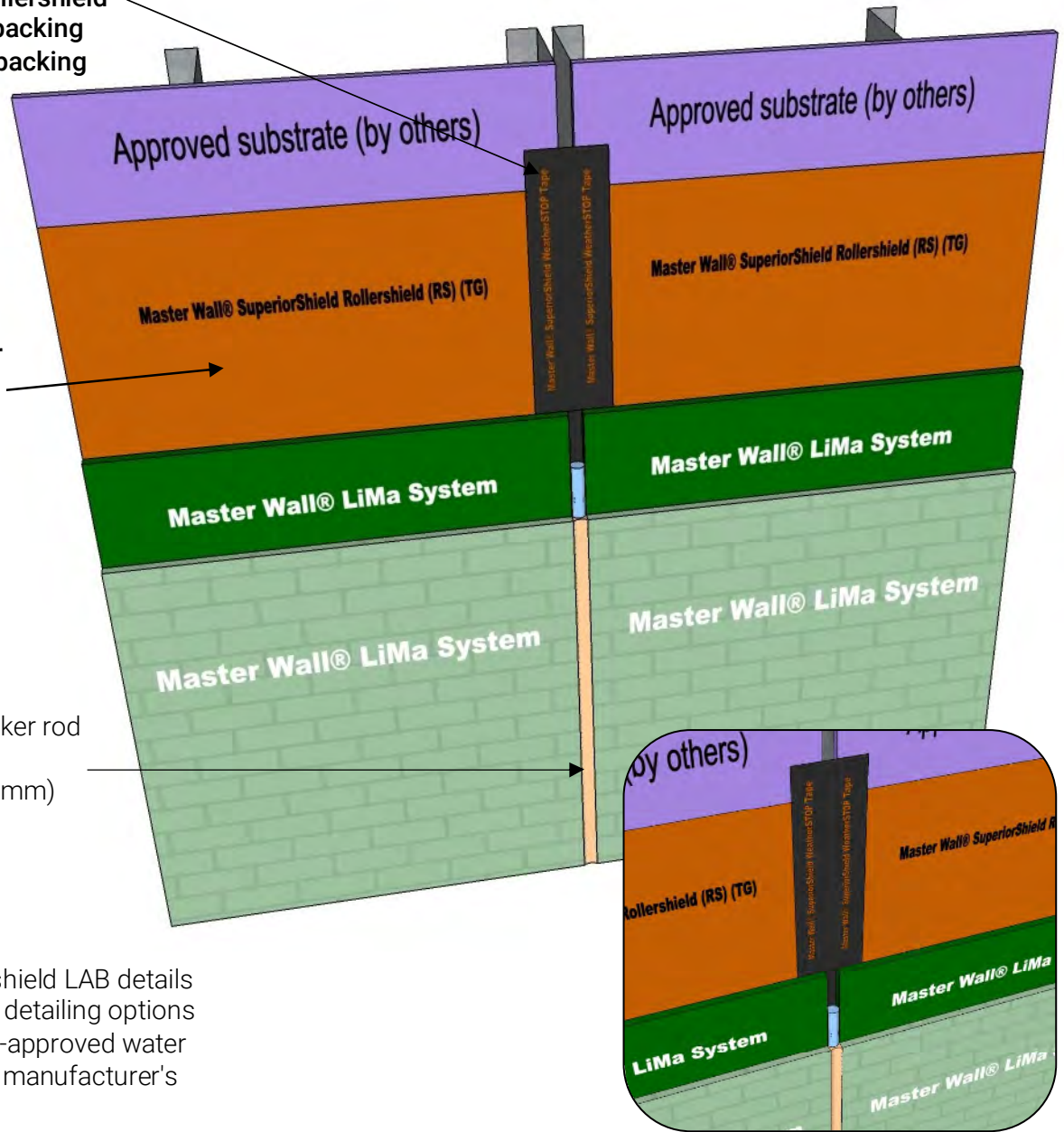
System Detail

WeatherStop Tape shown @ substrate expansion joint

- Rollershield with Rollershield Flashing Tape and backing
- SuperiorFlash with backing Option

Rollershield Air/Water Barrier shown (options vary with system selection)

Sealant joint and backer rod sized for anticipated movement, 3/8" (9.5 mm) minimum



Notes:

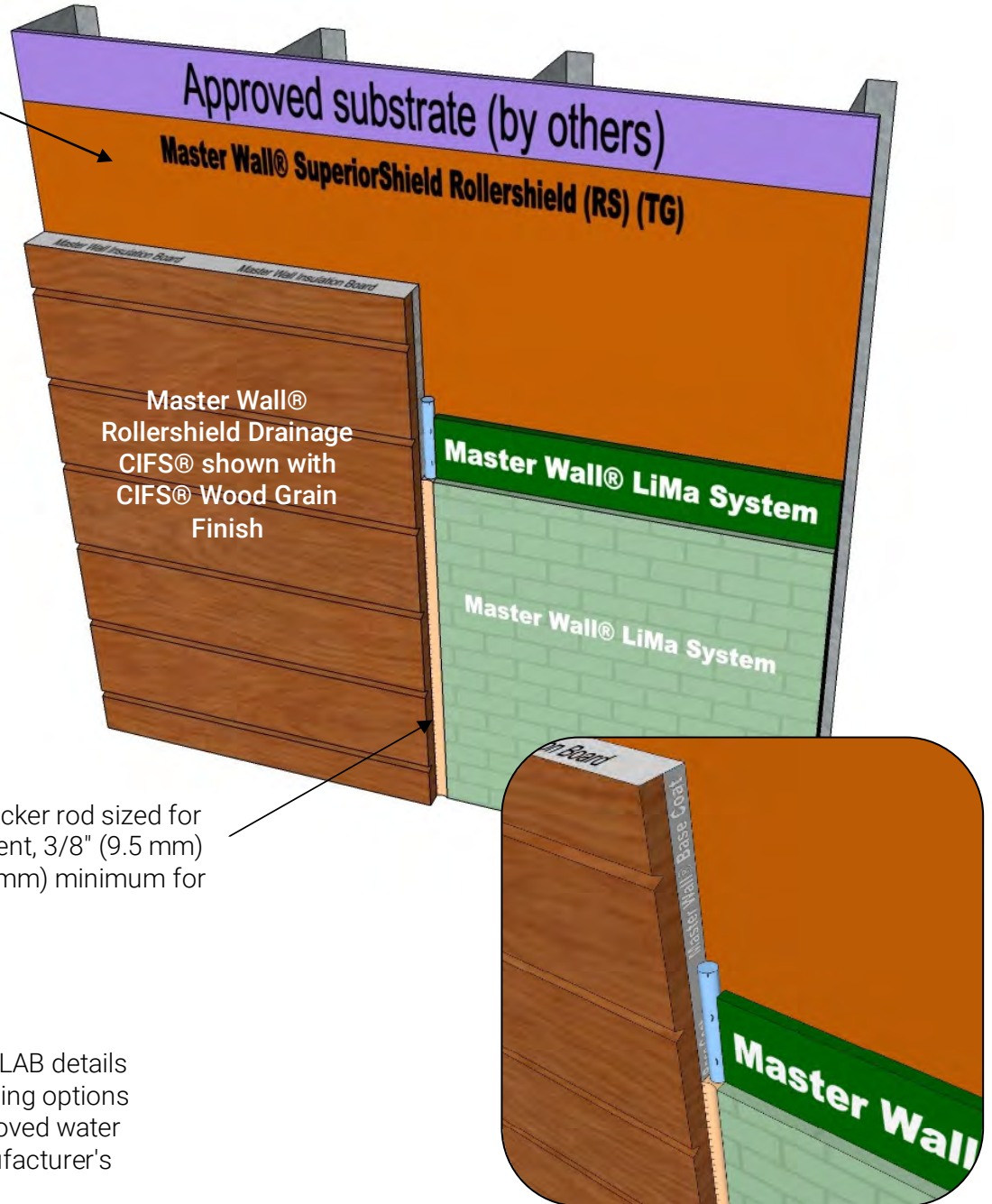
- See the Rollershield LAB details for a full set of detailing options
- For other code-approved water barriers follow manufacturer's instructions

LiMa D-09 Expansion Joint Detail

These drawings relay the conceptual conditions of Master Wall® Systems and are not the construction drawings. Ultimately the design and detailing of an entire wall system is the responsibility of a professional. These details will guide the design professional in the use of Master Wall® Products. Master Wall disclaims design, warranty or construction intent or responsibility. **Bold or Trade Name = Master Wall® Product.**

System Detail

Rollershield Air/Water Barrier shown (options vary with system selection)



Sealant joint and backer rod sized for anticipated movement, 3/8" (9.5 mm) minimum, 3/4" (19 mm) minimum for CIFS®

Notes:

- See the Rollershield LAB details for a full set of detailing options
- For other code-approved water barriers follow manufacturer's instructions

LiMa D-10 Dissimilar Materials

These drawings relay the conceptual conditions of Master Wall® Systems and are not the construction drawings. Ultimately the design and detailing of an entire wall system is the responsibility of a professional. These details will guide the design professional in the use of Master Wall® Products. Master Wall disclaims design, warranty or construction intent or responsibility. **Bold or Trade Name = Master Wall® Product.**