



Master Wall[®] Restoration



 **Master Wall Inc.[®]**
Building a Culture of Excellence

Reinspire Restoration Program

Renew

Good for newer buildings where the finish is being upgraded. Level with our base coat, then finish with our finishes. In this process, you will be using our base coat, and our finish to complete these projects.

Reinforce & Finish

Good for older buildings, once patches and repairs are completed. Revive your facade. Reinforce and finish with MBB bagged base coat embedded in Bulltec Mesh for stucco projects and standard 4.5 oz. mesh for EIFS.

Master Wall's unlimited options of finishes, specialty finishes systems and Superior Finish HP will "revive" your project making it appealing for years to come. Reinforce and refinish is a total warranted system.

Overclad

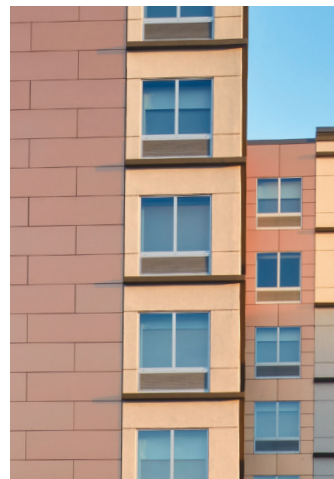
This process would involve cladding over an existing substrate with EIFS or stucco.

When looking to give your building a new facade and cover up brick, stucco or other wall claddings, "revive" with an EIFS overclad is the way to go. Master Wall's standard finishes, HP finish upgrade, specialty finishes and systems provides unlimited facade options. Overclad provides a complete warranted system.

Remove & Replace

When your project is distressed and in complete need of removal of the existing facade and substrates; Master, Wall's "removal and replace" provides you with unlimited facade options to "revive" your project and is a total warranted system.

Our recommendations for these renovation options will vary. Please contact your Master Wall Inc. sales representative to review your project and provide the best solution that meet your needs.



EIFS and Stucco Renovation Options

SuperiorCote Flat/Satin - made for coating a wide variety of substrates with class-leading durability with high resistance to blistering, peeling, and dirt pickup.

- 100% Acrylic Polymers for durability
- Vapor Permeable – resists blistering and allows trapped water vapors to pass
- Flat and Satin Sheen Available
- Water Based – easy clean up with water.

SuperiorCote HP - Class-leading, durable architectural coating with hydrophobic properties formulated with acrylic polymers. Hydrophobic properties bead rainwater, keeping the building cleaner.

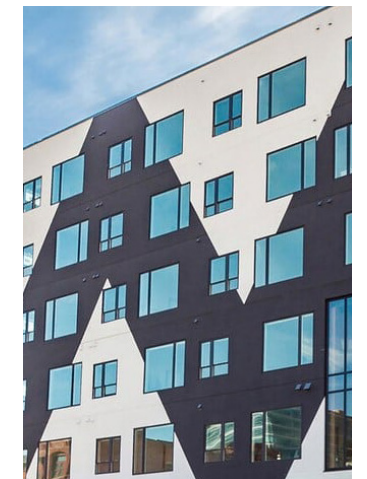
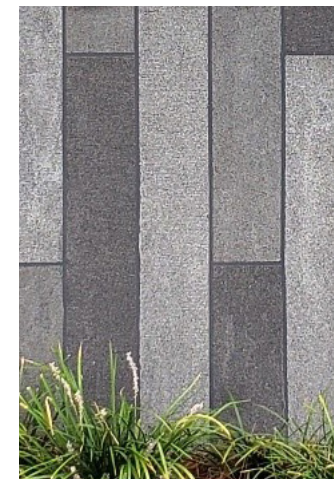
- Hydrophobic, beads water and keeps buildings cleaner
- Flat sheen compliments architecture
- 100% Acrylic Polymers for durability
- UV activated, performance improves with exposure
- Water-based – easy clean up with water

Superior Finishes - Master Wall finishes have one of the highest 100% acrylic polymer contents in our industry. This translates to extra durability, lower life-cycle maintenance, and a longer-lasting finish.

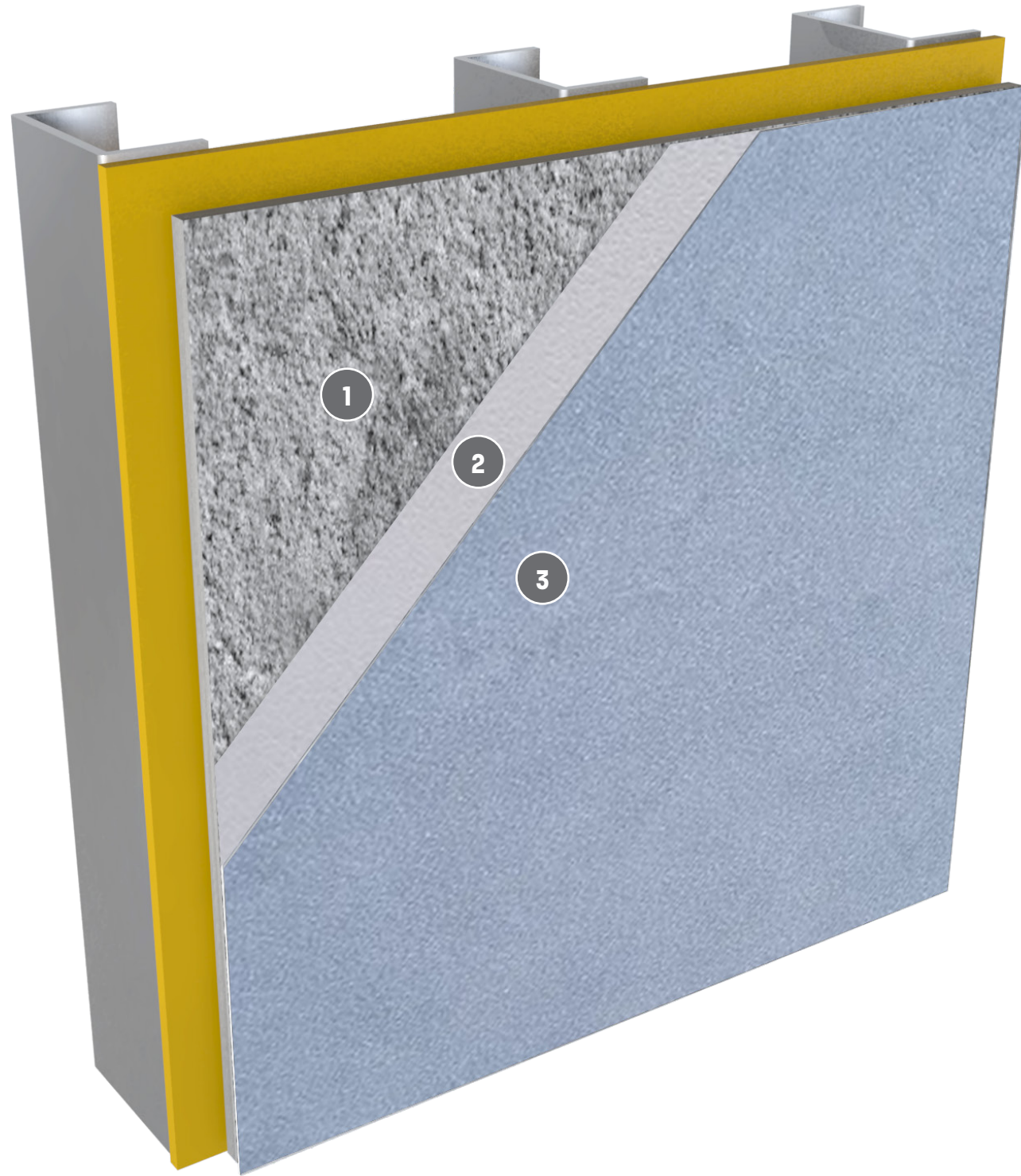
- 100% Acrylic Polymers for durability
- Dirt Pickup Resistant (DPR) Polymers
- Custom color matching available
- DuroTone colorfast pigments
- Vapor Permeable

Specialty Finishes – Some projects require a unique touch, and we can help with that. Below are just a few of our specialty finish options. For more options, please visit our website.

- CIFS Wood Grain - Wood-look with the energy benefits of a continuous insulation and secondary water barrier with up to 10-year limited warranty
- CIFS Brick - an application technique that quickly and easily recreates brick, but with the advantages of color control and repeatability.
- MetalTex - a unique integrally infused metallic look texture and finish that eliminates the step of adding a separate metallic topcoat.
- ReCote™ - Master Wall® ReCote™ is a beautiful lightly textured acrylic coating that rejuvenates surfaces of brick, concrete, masonry or tilt-up concrete. The integral colors enhance the surface while maintaining the modular patterns of the wall surface.

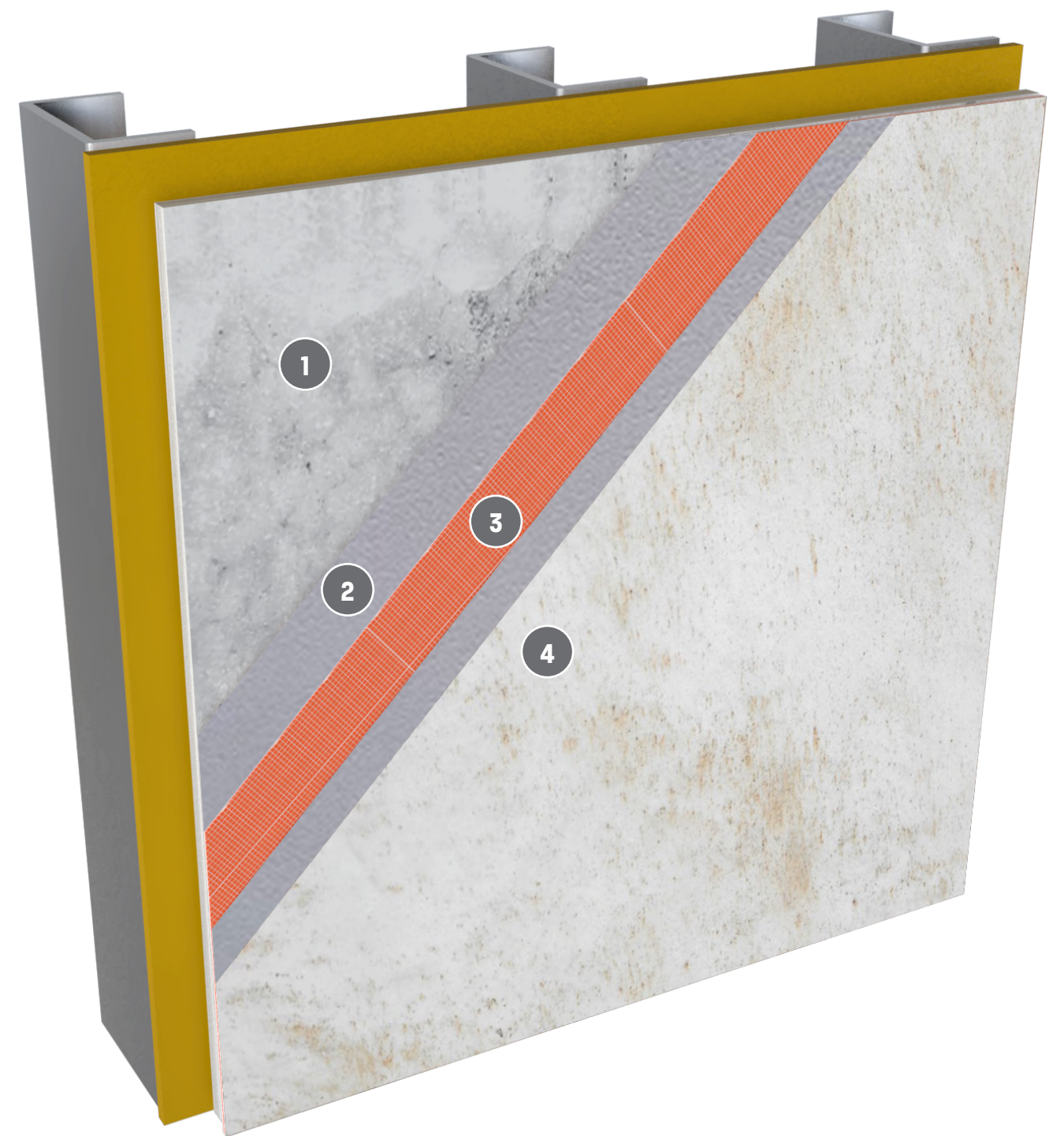


Renew



1. Existing EIFS or Stucco
2. Master Wall® Base Coat
3. Finish - Metal Tex Shown

Reinforce & Finish



1. Existing EIFS or Stucco
2. Master Wall® Base Coat
3. Master Wall® Reinforcing Mesh
4. Finish - Travertine Shown

Overclad



1. Approved Substrate
2. Rollershield Air/Water Barrier
3. Master Wall® Insulation Board
4. Master Wall® Base Coat
5. Master Wall® Reinforcing Mesh
6. Master Wall® Primecoat
7. Finish - Lumia Finish Shown

Remove & Replace



1. Existing EIFS - Removed to Framing
2. Rollershield Air/Water Barrier
3. Master Wall® Insulation Board
4. Master Wall® Base Coat
5. Master Wall® Reinforcing Mesh

6. Finish - CIFS® Woodgrain Shown
 - CIFS® Wood Grain Tex
 - CIFS® Wood Grain Glaze
 - CIFS® Wood Grain Sealer



Corporate Office

6975 Flat Rock Road
Midland, GA 31820
800-755-0825
customerservice@masterwall.com

Georgia Manufacturing

2265 Lithonia Industrial Boulevard
Stonecrest, GA 30058
800-755-0825

Utah Manufacturing

810 West Utah Avenue #1
Payson, UT 84651
888-492-0023

Texas Manufacturing

3943 FM 362
Brookshire, TX 77423
800-755-0825

Northeast Hub

1329 N. Reading Rd.
Stevens, PA 17578-9491
833-754-1580

Technical Service

tech@masterwall.com

Master Wall Inc.[®]
Building a Culture of Excellence