



# Aggre-flex Drainage System

07 24 19

Class PB Drainage Exterior Insulation and Finish System

## Features & Benefits

- 97% Drainage Efficiency
- High Insulating Value (R-4 per inch)
- Medium Impact Resistance is standard

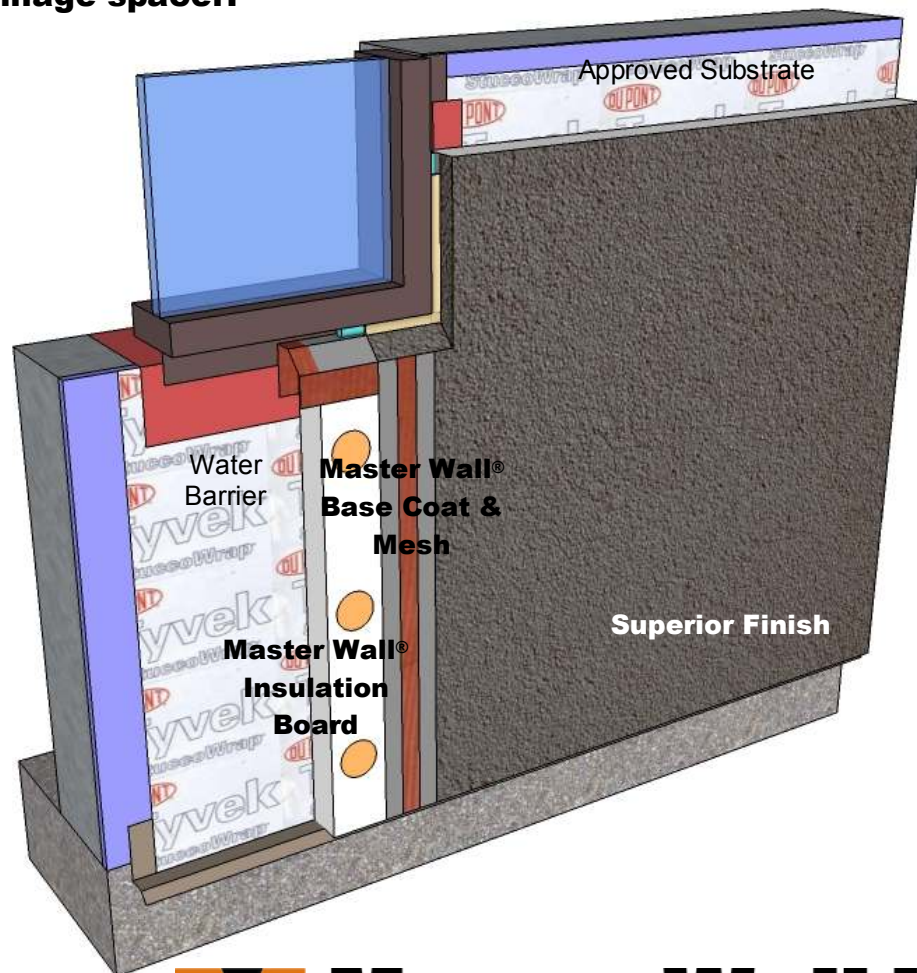
## System Use

- Commercial
- Residential

## Attachment Method

- Mechanical

Master Wall Inc.<sup>®</sup> Aggre-flex Drainage System is a mechanically attached polymer based (Class PB Drainage) Exterior Insulation and Finish System (EIFS). The system is applied over an approved secondary water barrier that helps protect the building from incidental water intrusion while insulating the entire building in a blanket of protective insulation. Aggre-flex Drainage may be installed with flat insulation board, Master Wall wavy insulation board or a drainage spacer.



 **Master Wall Inc.<sup>®</sup>**  
*Building a Culture of Excellence*

[masterwall.com](http://masterwall.com)

PO Box 397 • Fortson • GA • 31808 • 800-755-0825 • Tech: 800-760-2861



# Aggre-flex Drainage System

## Short Form Specification

### 1.0 General

This is a short form specification. Refer to Aggre-flex Drainage specifications and details for additional information.

#### 1.1 System Description

The Master Wall Inc.® Aggre-flex Drainage Exterior Insulation and Finish System (EIFS) is a Class PB (Polymer Based) EIF System consisting of mechanical attachment, insulation board, reinforcing mesh and a textured finish applied over a secondary weather-resistive barrier.

#### 1.2 Design Requirements:

- A. Reference Master Wall® suggested details and architectural drawings for specific detail requirements.
- B. Slope all surfaces a minimum of 1:2 (6" in 12") to shed water, maximum 12" (305 mm) wide.
- C. Maximum deflection of substrates shall not exceed L/240.
- D. Typical acceptable substrates include exterior grade gypsum sheathing (ASTM C1396), Glass Fiber Sheathing (ASTM C1177), CDX exterior grade plywood, Exposure 1 Oriented Strand Board (OSB). Contact Master Wall for other approved substrates.
- E. A code-approved weather-resistive barrier is required over the substrate.
- F. Expansion joints are required at building expansion joints, panel joints, floor lines in wood framed construction, and other areas where significant movement occurs.
- G. Detail and install drainage trim accessories according to the approved trim manufacturer's requirements (Plastic Components, Vinyl Corp. or approved equal).

#### 1.3 Quality Assurance

- A. The Aggre-flex Drainage System shall be recognized by current applicable building codes.
- B. The system shall be meet or exceed ASTM C1397 and detailed in accordance with ASTM E2511.
- C. The system shall have been tested for fire performance in accordance with ASTM E108, ASTM E-84, NFPA 265 & NFPA 268.
- D. The system shall have been tested for water resistance in accordance with ASTM E331.

#### 1.4 Job Conditions

- A. Store all materials protected from weather and direct sunlight at temperatures above 40°F (5°C).
- B. The ambient and wall temperature shall be a minimum of 40°F (5°C) and shall remain so for at least 24 hours after installation.

### 2.0 Products

All components of the Aggre-flex Drainage System shall be manufactured by Master Wall Inc.® and supplied by an authorized distributor.

- A. Master Wall® Approved Fasteners: Wind-Lock Wind Devil 2 washer and appropriate fastener or approved equal.
- B. Master Wall® Insulation Board: Molded Expanded Polystyrene insulation board manufactured to Master Wall specifications. Flat or wavy (grooved) insulation as required by the project specifications.
- C. Aggre-flex Mesh: Available in Standard, Detail, Hi-Tech, Medium, Strong and Ultra.
- D. Master Wall® Base Coats:
  1. Foam & Mesh Adhesive (F&M), F&M Plus: A 100% pure acrylic-based adhesive that is field mixed with Portland cement.
  2. Master Wall Bagged Base (MBB), MBB Plus: A ready to use dry base that is field mixed with water.
  3. Guardian: A waterproof 100% pure acrylic-based fiber reinforced adhesive that is field mixed with Portland cement.
- E. Superior Finish: 100% pure acrylic formulation with integral color and texture. Perfect Swirl 2.0 (Perfect), Fine Sand 1.0 (Spray), Medium Sand 1.5 (Desert Sand), Versatex 0.5 (Refinish) textures.
- F. Specialty Finishes: Specialty finish blends of natural and man-made decorative specialty finishes and accents.
- G. Master Wall Coatings:
  1. Primecoat/Sanded Primecoat: A water-based primer.
  2. Roller-flex: A water-based architectural finish coating.

### 3.0 Installation

- A. Inspect the substrate to ensure that it is free of all foreign materials that would affect the application of the Aggre-flex Drainage System.
- B. Apply the system in strict accordance with Master Wall® specifications, product data sheets, architectural drawings and architectural specifications.

**We finish strong.**

Information contained in this product data sheet conforms to the standard detail recommendations and specifications for the installation of Master Wall Inc.® products and is presented in good faith. Master Wall Inc.® assumes no liability, expressed or implied as to the architecture, engineering, or workmanship of any project. This information may be concurrent with, or superseded by other applicable documents, such as specifications and details. Contact Master Wall Inc.® for the most current product information. ©2016 Master Wall Inc.®

 **Master Wall Inc.®**  
*Building a Culture of Excellence*  
**masterwall.com**

**PO Box 397 • Fortson • GA • 31808 • 800-755-0825 • Tech: 800-760-2861**