



Rollershield LAB

07 27 00

Liquid Applied Air/Water Barrier

100%

When it comes to keeping your building dry you want 100% protection, and can't settle for less. Sheet water barriers have laps, gaps and are secured with fasteners...holes. At windows and doors peel and stick flashings don't seal properly or lose bond over time.

The Rollershield LAB Air/Water Barrier System is a fluid applied secondary water barrier and flashing that offers 100% coverage with no laps, breaks or holes. It seals the substrate and protects the building.

Let me Breathe!

Like people, buildings breathe and are continuously passing water vapors around depending upon interior and exterior conditions. While Rollershield is an excellent water barrier, it's also highly breathable (30 perms). This means that building moisture can pass easily and eliminates the problems posed by vapor barriers.

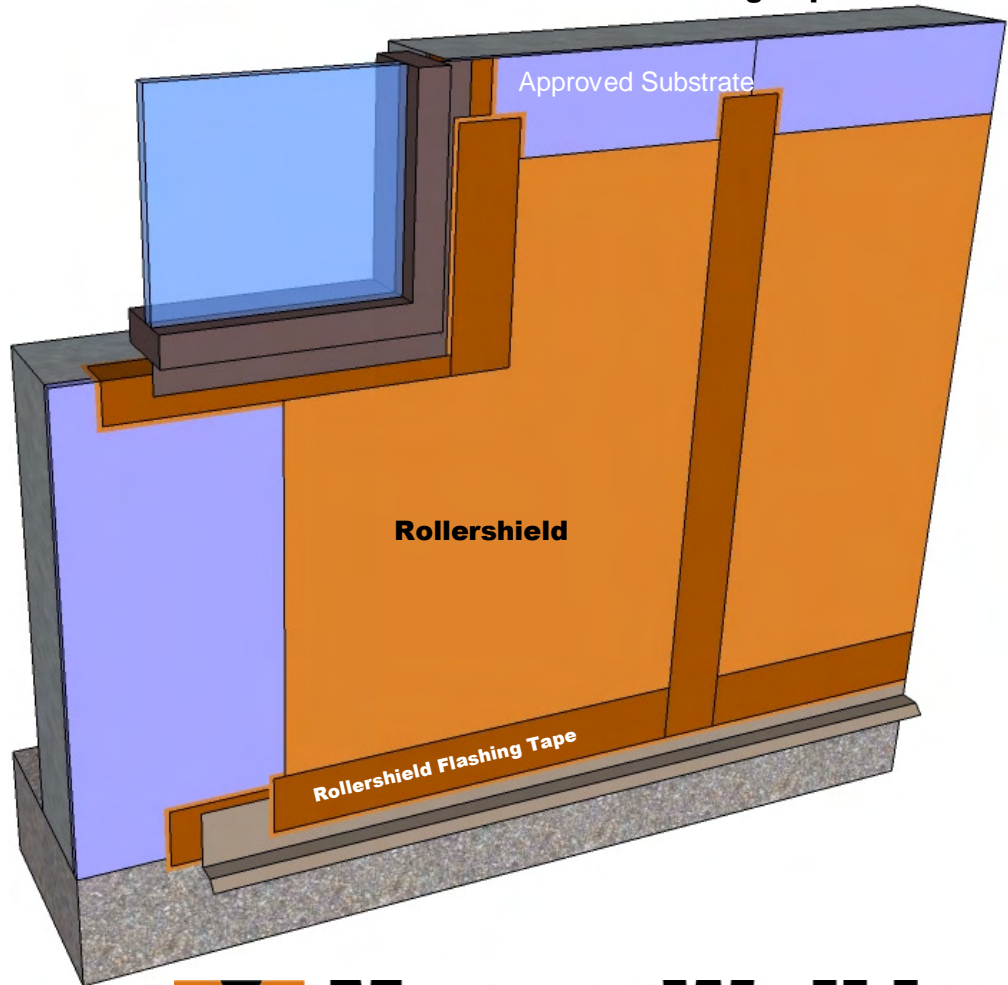
System Use

- Commercial
- Residential

The Rollershield LAB Liquid-applied Air/Water Barrier system works under all claddings that require a secondary water barrier including stone, brick, stucco and Master Wall® EIFS. The system consists of the following components:

- Rollershield Air/Water Barrier, supplied in 5 gallon (19L) pails
- Rollershield Flashing Tape for openings and sheathing applications

Rollershield is applied with a foam roller or spray equipment to 10 mils dry thickness and forms a continuous water barrier. Sheathing board joints and transitions are reinforced with Rollershield Flashing Tape.



Master Wall Inc.®
Building a Culture of Excellence

masterwall.com

PO Box 397 • Fortson • GA • 31808 • 800-755-0825 • Tech: 800-760-2861



Rollershield LAB

Short Form Specification

1.0 General

This is a short form specification. Refer to Rollershield LAB specifications and details for additional information.

1.1 System Description

The Master Wall Inc.® Rollershield LAB System is a liquid applied vapor permeable air and water barrier.

1.2 Design Requirements:

- A. Reference Master Wall® suggested details and architectural drawings for specific detail requirements.
- B. Maximum deflection of substrates shall not exceed L/240.
- C. Typical acceptable substrates include unpainted brick, masonry, concrete, plywood, Oriented Strand Board (OSB) or gypsum sheathings (ASTM C1396 or C1177). Contact Master Wall® for other approved substrates.

1.3 Job Conditions

- A. Store all materials protected from weather and direct sunlight at temperatures above 40°F (5°C).
- B. The ambient and wall temperature shall be a minimum of 40°F (5°C) and shall remain so for at least 24 hours after installation.

2.0 Products

All components of the Rollershield System shall be manufactured by Master Wall Inc.® and supplied by an authorized distributor.

A. Water Barrier & Flashing Tapes:

1. Rollershield: A 100% pure acrylic-based roll-applied weather-resistive barrier.
2. Rollershield Flashing Tape: A lightweight nonwoven joint treatment material.

3.0 Installation

- A. Inspect the substrate to ensure that it is free of all foreign materials that would affect the adhesion of the Rollershield LAB.
- B. Apply the coatings in strict accordance with Master Wall® specifications, product data sheets, architectural drawings and architectural specifications.

ASTM C297 Tensile Bond

Dens Glass Gold	31.6 psi
Exterior Gypsum	28.2 psi
OSB	40.4 psi
Plywood	79.1 psi
Cement Board	70.6 psi
Copper	185.1 psi
Galvanized Steel	180.8 psi
Rigid PVC	168.2 psi
Aluminum	184.2 psi
Color Coated Aluminum	203.5 psi
Stainless Steel	183.0 psi

ASTM D1970

@ 22 mils dft	Pass
---------------	------

ASTM D2247 Water Resistance/ICC-ES AC212

Exterior Gypsum	Pass
Dens Glass Gold	Pass
Cement Board	Pass
Plywood	Pass
OSB	Pass

ASTM E-84 Combustibility

Flamespread-5
Smoke Developed-5

ASTM E96 Water Vapor Transmission

203 g/24 hr/m²
30.5 perms

ASTM E2178 Air Permeability

0.0002 cfm/ft² at 1.57 psf

ASTM E2273 EIFS Drainage Performance

ICC-ES AC212 99.2% Efficiency

ASTM E2357 Air Leakage Resistance

0.003 L/s/m² @ 75 Pa
0.02 L/s/m² @ 300 Pa

ICC-ES AC212 Full Scale Conditioning and Water Testing

Pass

ICC-ES AC212 Freeze Thaw

Plywood	Pass
Cement Board	Pass
OSB	Pass
Exterior Gypsum	Pass
Dens Glass Gold	Pass

ICC-ES AC212 Weathering, 55 cm Head

Exterior Gypsum	Pass
Dens Glass Gold	Pass
Cement Board	Pass
OSB	Pass
Plywood	Pass

NFPA 285 Multi-Story Fire Test

Pass

We finish strong.

Information contained in this product data sheet conforms to the standard detail recommendations and specifications for the installation of Master Wall Inc.® products and is presented in good faith. Master Wall Inc.® assumes no liability, expressed or implied as to the architecture, engineering, or workmanship of any project. This information may be concurrent with, or superseded by other applicable documents, such as specifications and details. Contact Master Wall Inc.® for the most current product information. ©2017 Master Wall Inc.®

 **Master Wall Inc.®**
Building a Culture of Excellence
masterwall.com

PO Box 397 • Fortson • GA • 31808 • 800-755-0825 • Tech: 800-760-2861