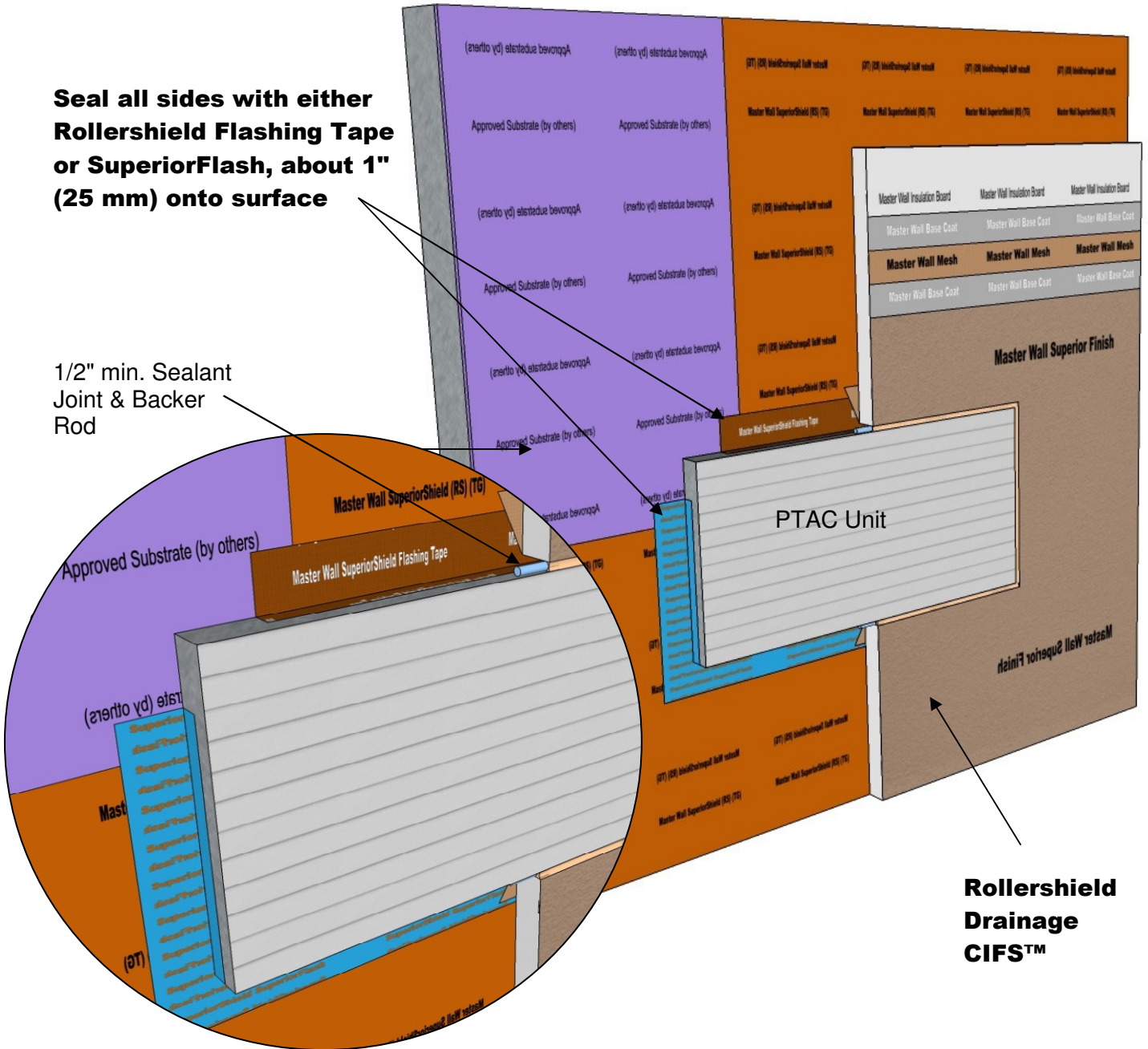




**Seal all sides with either  
Rollershield Flashing Tape  
or SuperiorFlash, about 1"  
(25 mm) onto surface**

1/2" min. Sealant  
Joint & Backer  
Rod



**RDCIFS SD 012 PTAC UNIT DETAIL**

<https://3dwarehouse.sketchup.com/model/c0ecc2b3-48e9-45de-a0b1-0e275555ea96/Rollershield-Drainage-CIFS%E2%84%A2-PTAC-Detail>

These drawings relay the conceptual conditions of Master Wall® Systems and are not the construction drawings. Ultimately the design and detailing of an entire wall system is the responsibility of a professional. These details will guide the design professional in the use of Master Wall® Products. Master Wall disclaims design, warranty or construction intent or responsibility. **Bold = Master Wall® Product.** ©2017 Master Wall Inc.®