



Helps keep brick, stucco, stone and siding-veneered buildings dry

Use

As a continuous drainage plane behind adhered masonry veneers such as stucco, flat brick and stone to provide drainage and drying.

Benefits

- Easier, faster installation than installing a drainage plane and lath separately
- Installs like regular lath, no new installation skills or tools necessary
- Combines proven components in an engineered and tested system
- Designed to assist code compliance:
- Clearly shows 1" minimum lath overlap
- Promotes full lath encapsulation without clogging the drainage plane
- Drainage mesh provides an effective mortar barrier
- Drainage mesh edges butt together to form a continuous drainage plane
- Lath is 2.5 lb self-furring, dimpled, diamond mesh G-60 galvanized expanded steel for high strength and corrosion resistance
- Drainage plane mesh is 90% open weave polyester to allow unrestricted flow of moisture to the weep holes
- Created and backed by industry leader Mortar Net Solutions™ in partnership with ClarkDietrich Building Systems
- Assembled in the USA from 100% USA-made materials
- Conforms to ASTM C847

Product Characteristics

- Metal Lath: 27" W x 97" L
- Drainage Mesh: 0.25" T x 25.5 +/-0.5" W x 94.5 +/-0.5" L

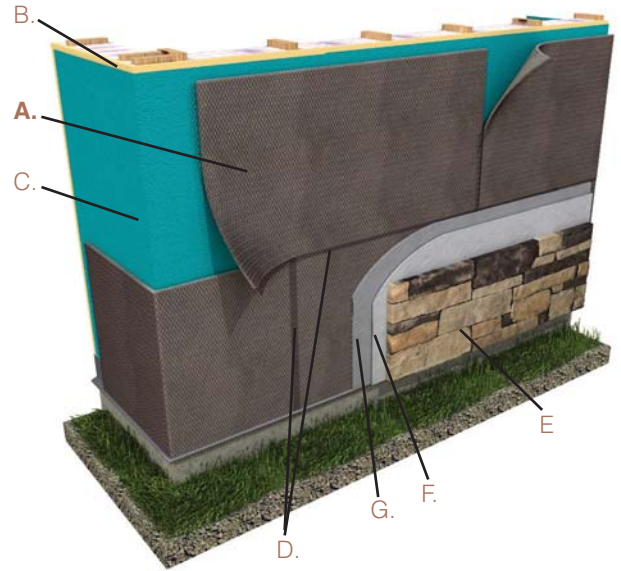
Sizes & Packaging

THICKNESS	WIDTH*	LENGTH*	BUNDLE	SF/BUNDLE**
0.25"	25.5"	97"	10 sheets	160 SF

* +/-0.5"

** approximate

100 sheets per pallet (approximate weight: 600 lbs.)



A. LathNet

Combination lath & drainage mesh installed left to right

B. Exterior Grade Sheathing

C. Weather Resistive Barrier

D. LathNet panels shingle-style overlap on all vertical and horizontal joints

E. Thin Stone Veneer or Stucco Finish Coat

F. Scratch Coat

G. Base Coat

LathNet Corner Detail

