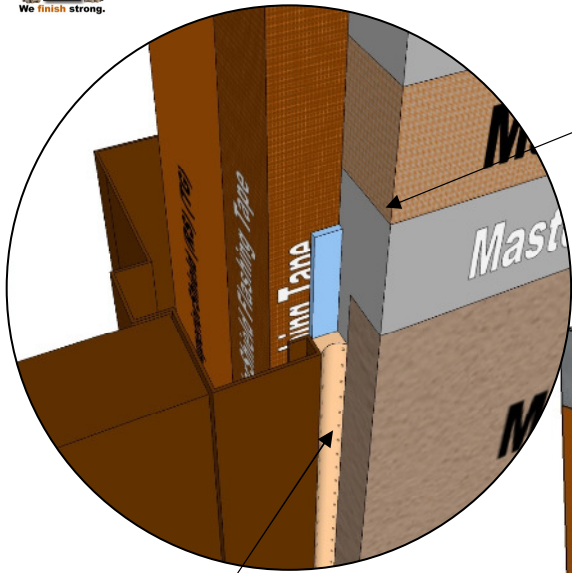


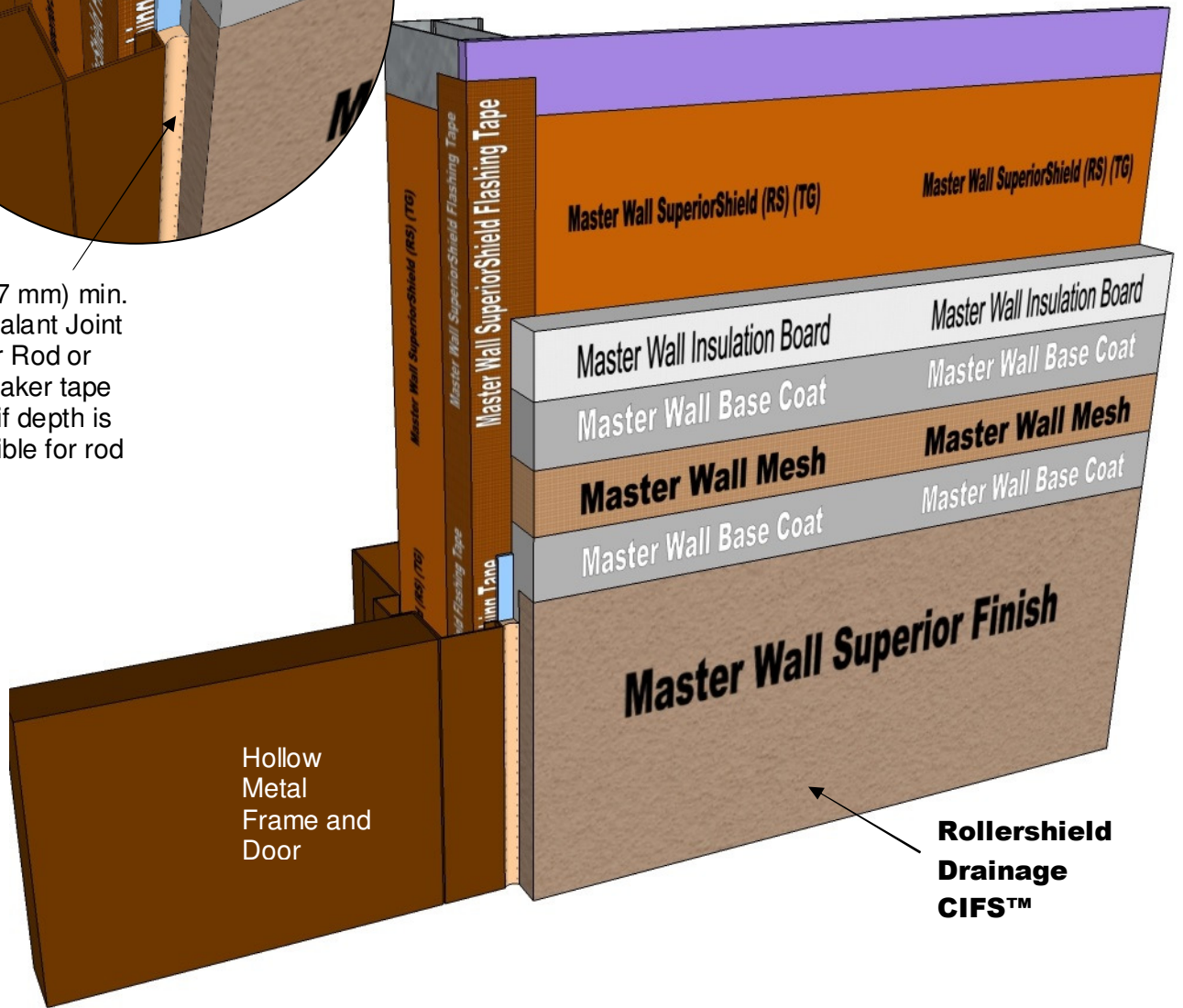


Rollershield Drainage CIFS™ – Continuously Insulated Section 07 24 19



Backwrapped CIFS™ Shown,
EIFS Plastic accessories are
optional.

1/2" (12.7 mm) min.
Jamb Sealant Joint
& Backer Rod or
bond breaker tape
(shown) if depth is
not possible for rod



RDCIFS-18 TYPICAL HOLLOW METAL DOOR JAMB

Model Link: <https://3dwarehouse.sketchup.com/model/d6fd988e-00ed-4047-9482-324b1fa9b164/Rollershield-Drainage-CIFS%E2%84%A2-Hollow-Metal-Door-Jamb>

These drawings relay the conceptual conditions of Master Wall® Systems and are not the construction drawings. Ultimately the design and detailing of an entire wall system is the responsibility of a professional. These details will guide the design professional in the use of Master Wall® Products. Master Wall disclaims design, warranty or construction intent or responsibility. **Bold = Master Wall® Product.**

©2018 Master Wall Inc.®