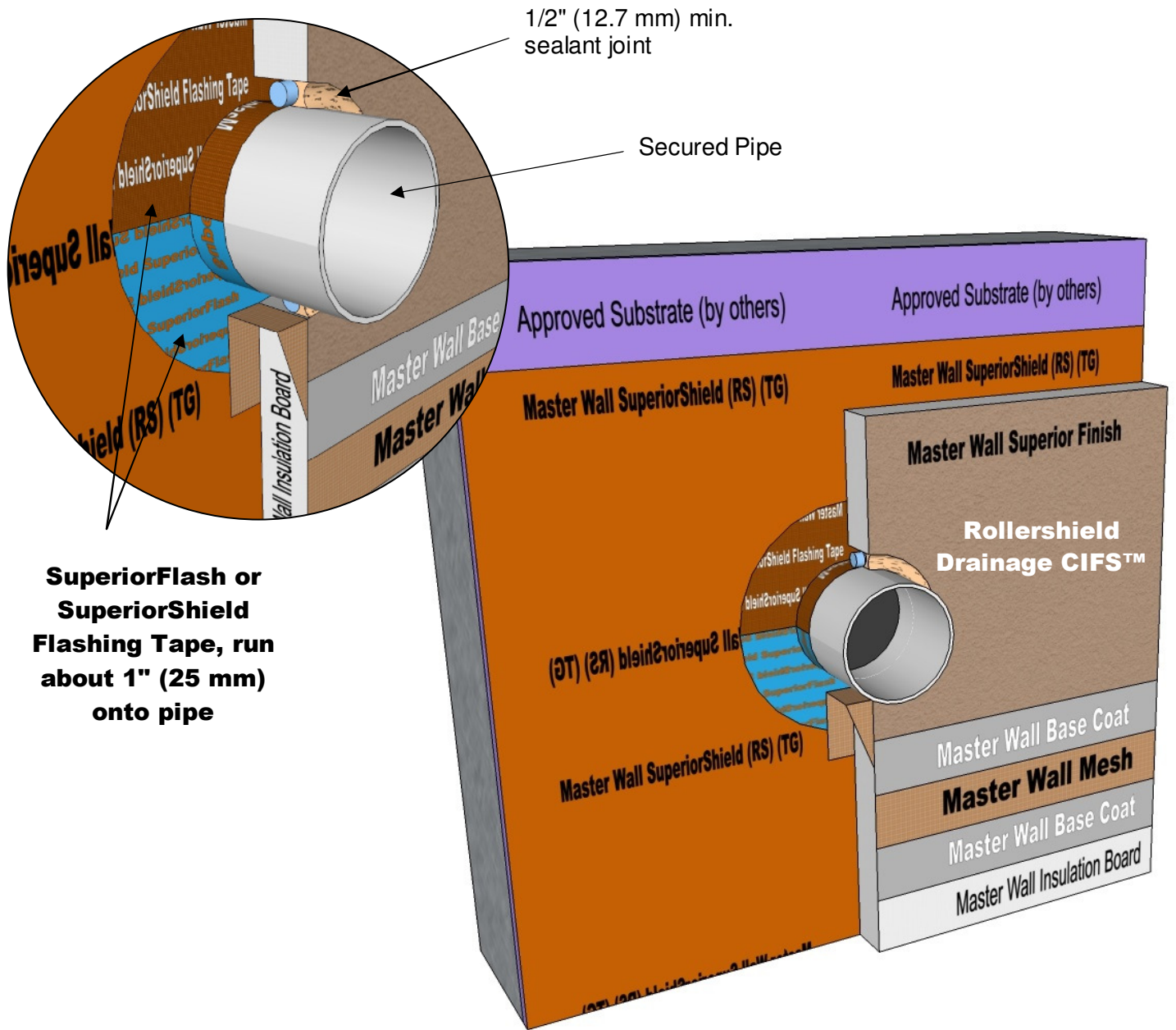




# Rollershield Drainage CIFS™ – Continuously Insulated Section 07 24 19



**SuperiorFlash or SuperiorShield Flashing Tape, run about 1" (25 mm) onto pipe**

## **RDCIFS-21 TYPICAL PIPE PENETRATION DETAIL**

Model Link: <https://3dwarehouse.sketchup.com/model/89abb201-cc88-44fd-9a91-2ff140ded5ba/Rollershield-Drainage-CIFS%E2%84%A2-Pipe-Penetration-Detail>

These drawings relay the conceptual conditions of Master Wall® Systems and are not the construction drawings. Ultimately the design and detailing of an entire wall system is the responsibility of a professional. These details will guide the design professional in the use of Master Wall® Products. Master Wall disclaims design, warranty or construction intent or responsibility. **Bold = Master Wall® Product.** ©2018 Master Wall Inc.®