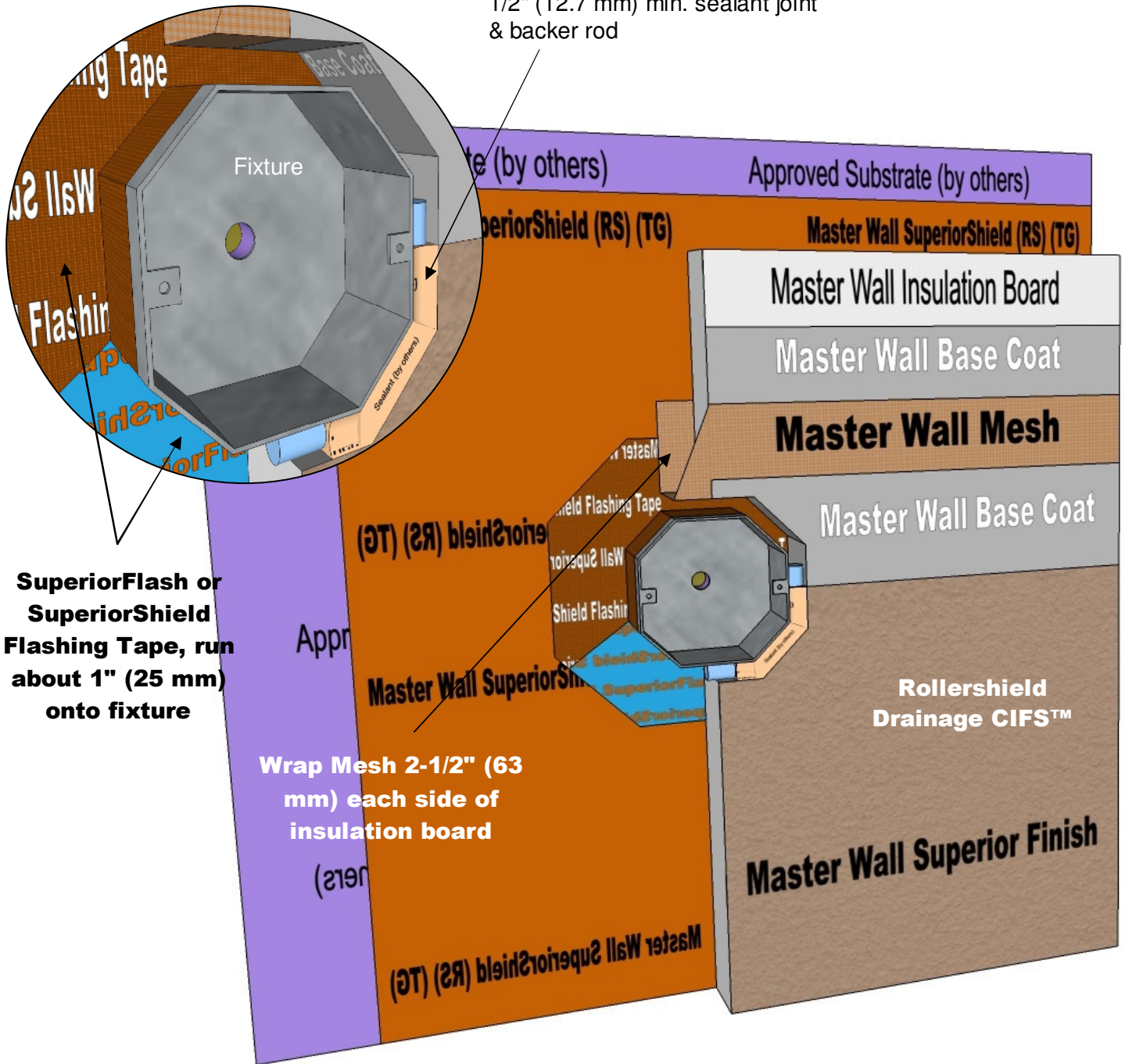




# Rollershield Drainage CIFS™ – Continuously Insulated Section 07 24 19

1/2" (12.7 mm) min. sealant joint  
& backer rod



## **RDCIFS-25 TYPICAL FIXTURE ATTACHMENT**

Model Link: <https://3dwarehouse.sketchup.com/model/a53479fd-6eaf-4609-b2c0-5060a0080ec7/Rollershield-Drainage-CIFS%E2%84%A2-Fixture-Attachment>

These drawings relay the conceptual conditions of Master Wall® Systems and are not the construction drawings. Ultimately the design and detailing of an entire wall system is the responsibility of a professional. These details will guide the design professional in the use of Master Wall® Products. Master Wall disclaims design, warranty or construction intent or responsibility. **Bold = Master Wall® Product.**

©2018 Master Wall Inc.®