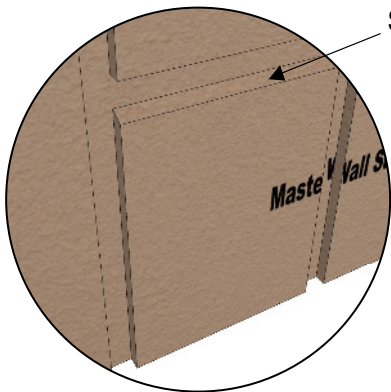




Rollershield Drainage CIFS™ – Continuously Insulated Section 07 24 19

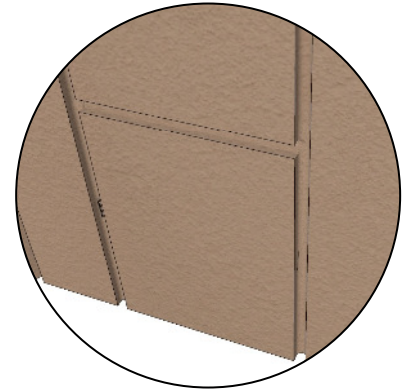


Slope 1:2 min.

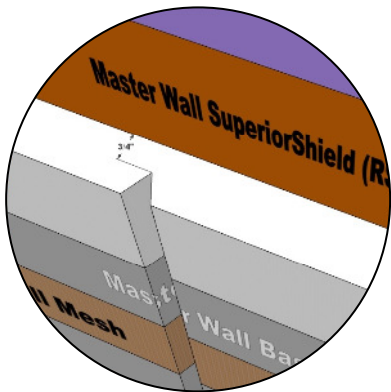
3/4" deep by 1-1/2" wide (19 x 38 mm) square groove shown



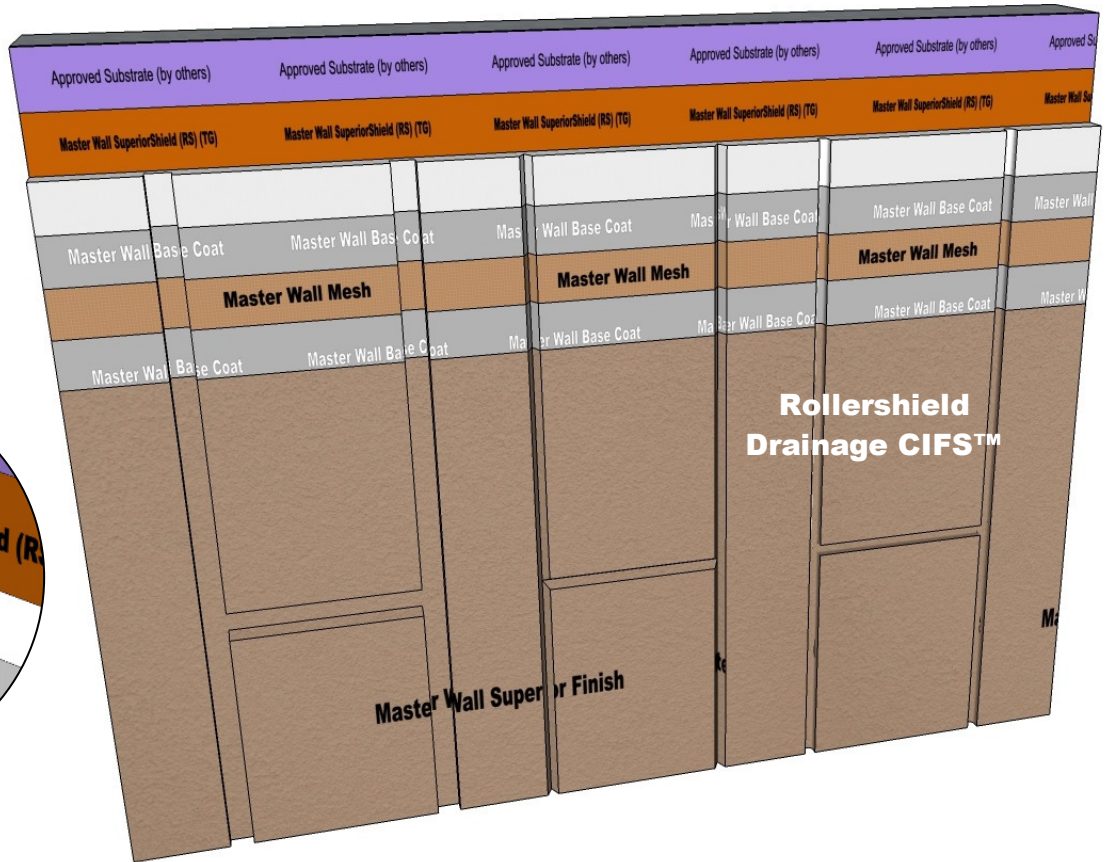
3/4" deep by 3/4" wide (19 x 19 mm) V-groove shown



3/4" deep by 3/4" wide (19 x 19 mm) U-groove shown



Maintain 3/4" (19 mm) minimum insulation thickness under joints



RDCIFS-26 TYPICAL AESTHETIC JOINTS

Model Link: <https://3dwarehouse.sketchup.com/model/48733151-81e3-4afc-b907-2794edf88d8b/Rollershield-Drainage-CIFS%E2%84%A2-Aesthetic-Joint>

Note: Aesthetic Joints are decorative and not a structural component of the wall system

These drawings relay the conceptual conditions of Master Wall® Systems and are not the construction drawings. Ultimately the design and detailing of an entire wall system is the responsibility of a professional. These details will guide the design professional in the use of Master Wall® Products. Master Wall disclaims design, warranty or construction intent or responsibility. **Bold = Master Wall® Product.**

©2018 Master Wall Inc.®