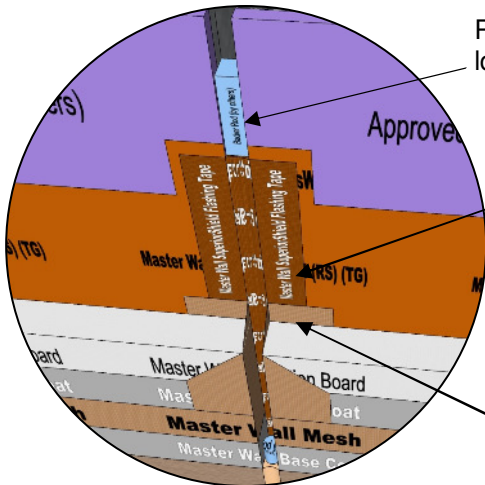




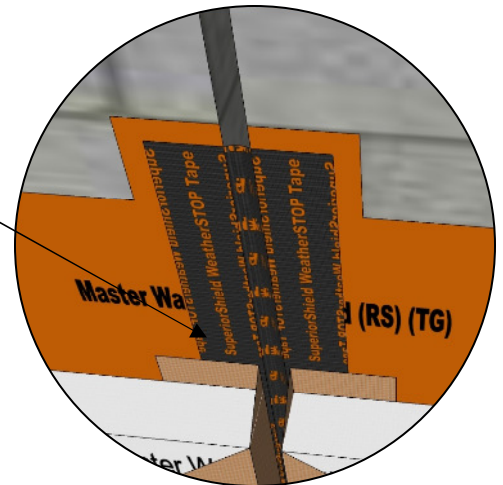
Rollershield Drainage CIFS™ – Continuously Insulated Section 07 24 19



Provide compressible fill at joint location (backer rod shown)

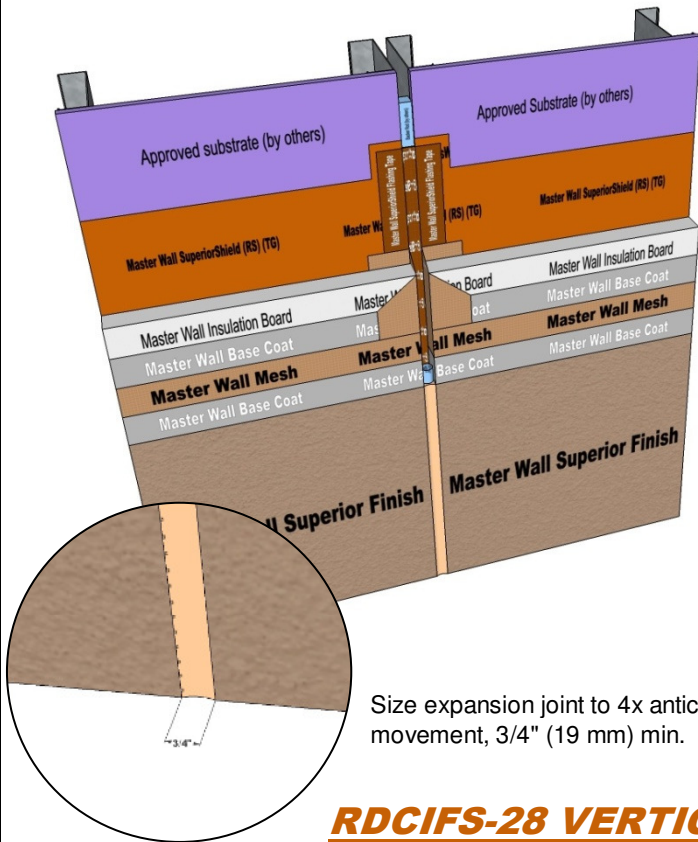
Rollershield Flashing Tape or WeatherSTOP Tape, 1-1/2" (38 mm) min onto substrate

Wrap Mesh 2-1/2" (63 mm) each side of insulation board

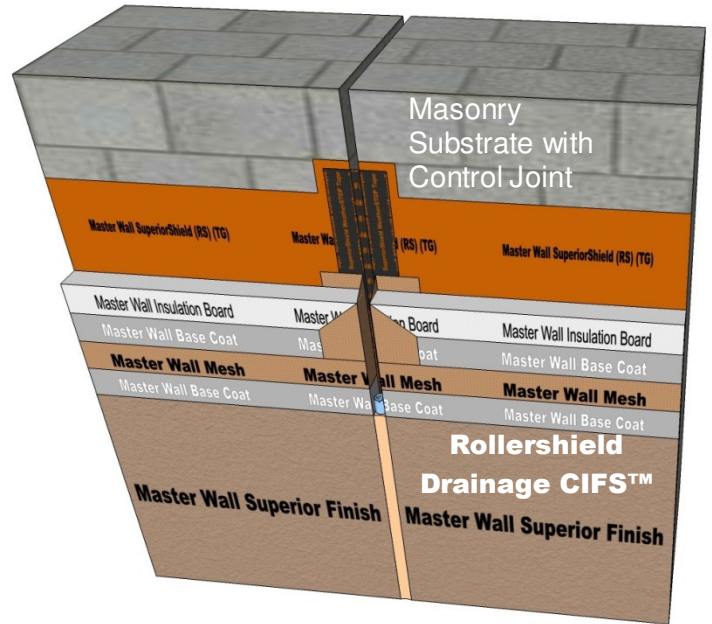


Rollershield Flashing Tape Option

WeatherStop Tape Option



Size expansion joint to 4x anticipated movement, 3/4" (19 mm) min.



RDCIFS-28 VERTICAL EXPANSION JOINT

Model Link: <https://3dwarehouse.sketchup.com/model/73209380-b5a0-4855-b534-5bef2a4117ff/Rollershield-Drainage-CIFS%E2%84%A2-Vertical-Expansion-Joint>

These drawings relay the conceptual conditions of Master Wall® Systems and are not the construction drawings. Ultimately the design and detailing of an entire wall system is the responsibility of a professional. These details will guide the design professional in the use of Master Wall® Products. Master Wall disclaims design, warranty or construction intent or responsibility. **Bold = Master Wall® Product.**

©2018 Master Wall Inc.®