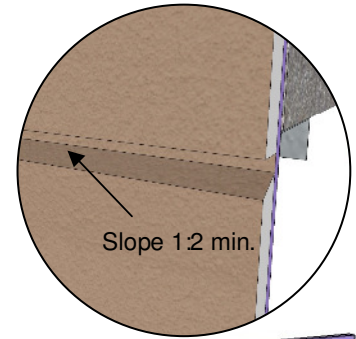
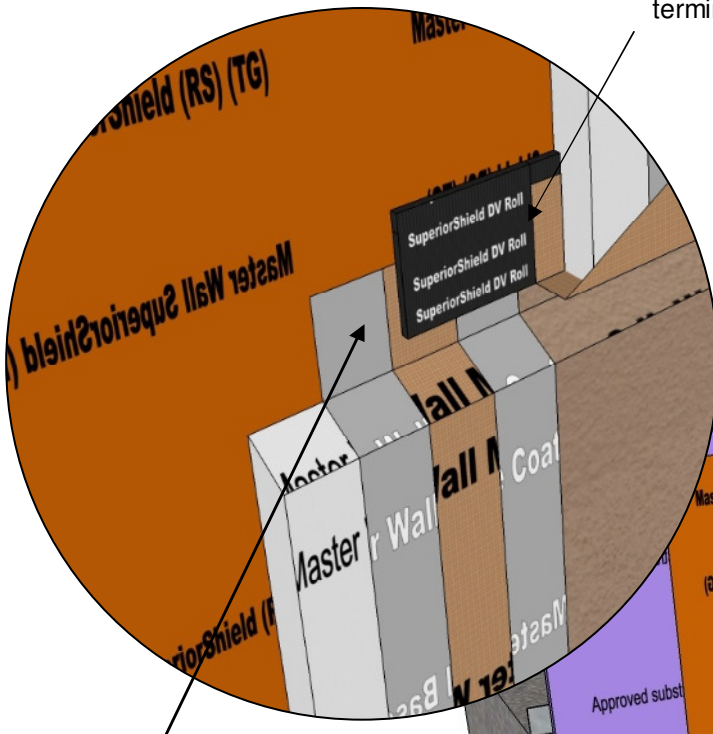


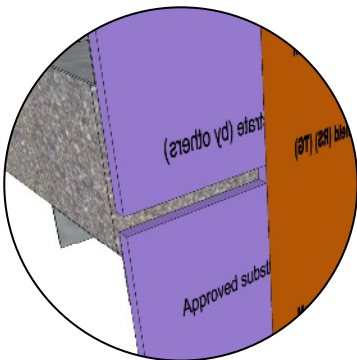


Rollershield Drainage CIFS™ – Continuously Insulated Section 07 24 19

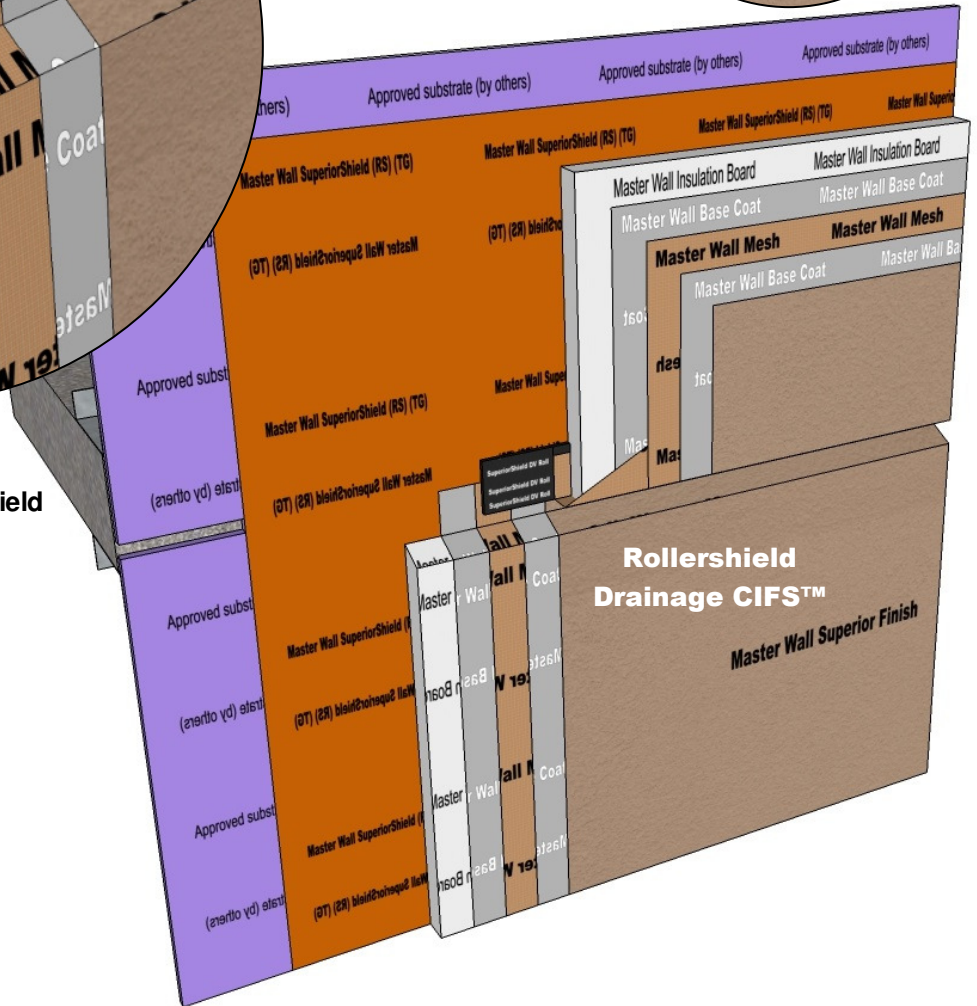
Backwrap EIFS and use **DV Roll** at the termination



Wrap Mesh 2-1/2" (63 mm) min. onto substrate as shown or provide a metal flashing counter flashed with **Rollershield** and **Rollershield Flashing Tape**



if expansion also occurs, follow the expansion joint detailing and place DV Roll over this area



RDCIFS-31 FLOOR LINE DRAINAGE

Model Link: <https://3dwarehouse.sketchup.com/model/1068f0c3-2ac5-4b93-b907-2e81ad57c55b/Rollershield-Drainage-CIFS%E2%84%A2-Floor-Line-Drainage>

These drawings relay the conceptual conditions of Master Wall® Systems and are not the construction drawings. Ultimately the design and detailing of an entire wall system is the responsibility of a professional. These details will guide the design professional in the use of Master Wall® Products. Master Wall disclaims design, warranty or construction intent or responsibility. **Bold = Master Wall® Product.**

©2018 Master Wall Inc.®