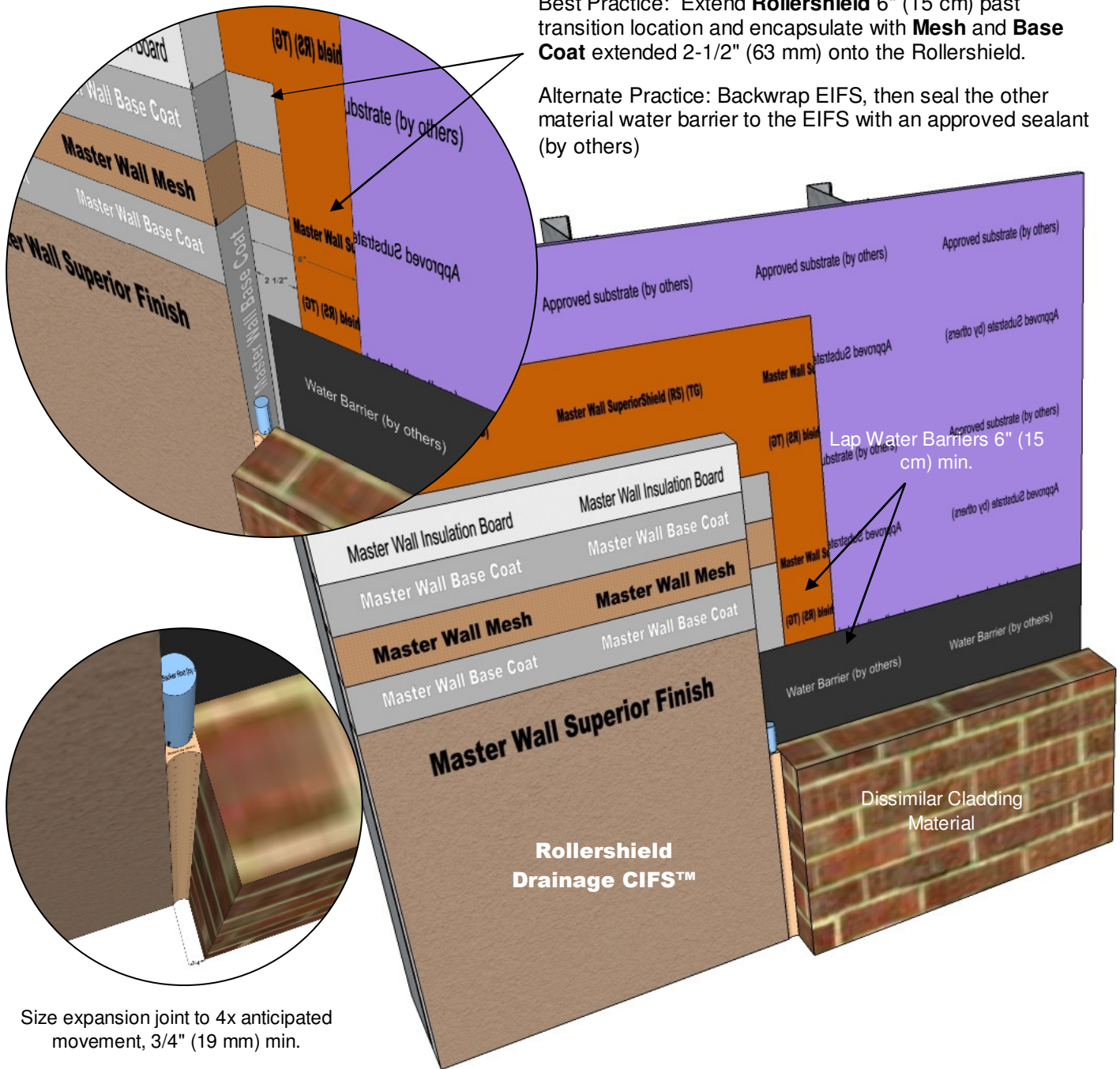




Rollershield Drainage CIFS™ – Continuously Insulated Section 07 24 19

Best Practice: Extend **Rollershield 6"** (15 cm) past transition location and encapsulate with **Mesh** and **Base Coat** extended 2-1/2" (63 mm) onto the Rollershield.

Alternate Practice: Backwrap EIFS, then seal the other material water barrier to the EIFS with an approved sealant (by others)



RDCIFS-33 DISSIMILAR MATERIALS

Model Link: <https://3dwarehouse.sketchup.com/model/933be7e4-65a7-4101-a3e7-f7573b169835/Rollershield-Drainage-CIFS%E2%84%A2-Detail-at-Dissimilar-Materials>

These drawings relay the conceptual conditions of Master Wall® Systems and are not the construction drawings. Ultimately the design and detailing of an entire wall system is the responsibility of a professional. These details will guide the design professional in the use of Master Wall® Products. Master Wall disclaims design, warranty or construction intent or responsibility. **Bold = Master Wall® Product.**

©2018 Master Wall Inc.®