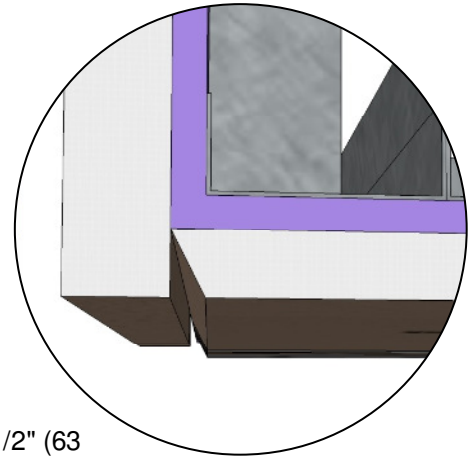
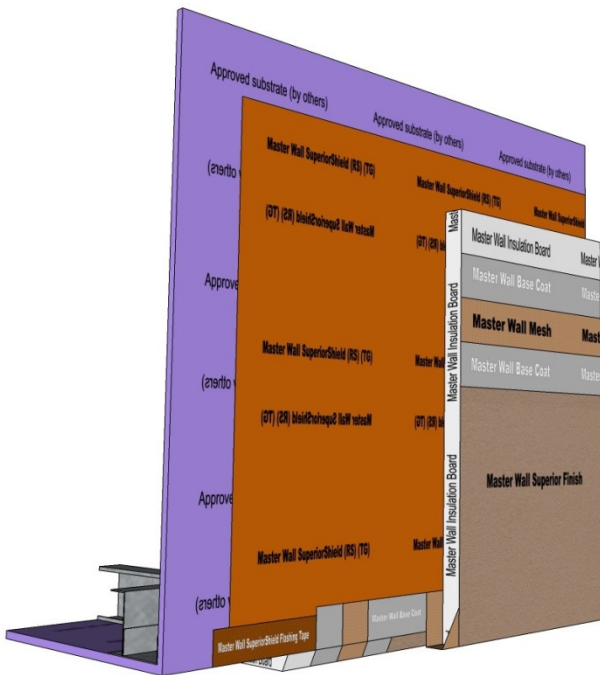
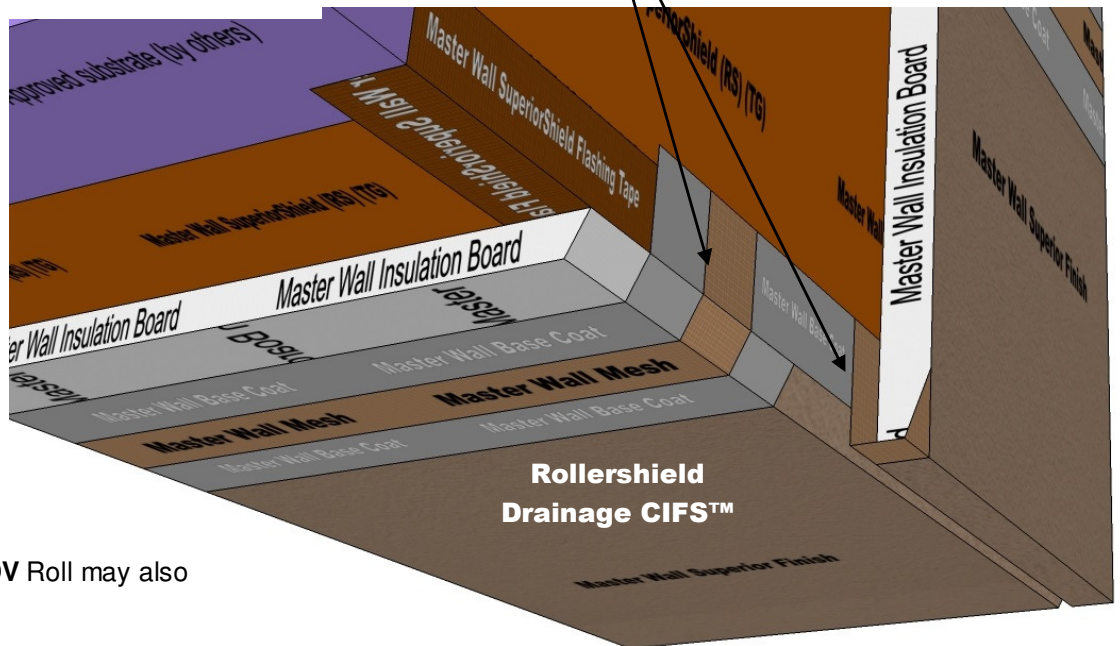




Rollershield Drainage CIFS™ – Continuously Insulated Section 07 24 19



Wrap Mesh 2-1/2" (63 mm) min. onto substrate as shown



Backwrap EIFS, optional DV Roll may also be used at the termination

RDCIFS-36 SOFFIT/DRIP

Model Link: <https://3dwarehouse.sketchup.com/model/9b2e8ba9-dda2-4e9b-ab41-9931b63b2ee1/Rollershield-Drainage-CIFS%E2%84%A2-SoffitDrip-Detail>

These drawings relay the conceptual conditions of Master Wall® Systems and are not the construction drawings. Ultimately the design and detailing of an entire wall system is the responsibility of a professional. These details will guide the design professional in the use of Master Wall® Products. Master Wall disclaims design, warranty or construction intent or responsibility. **Bold = Master Wall® Product.** ©2018 Master Wall Inc.®