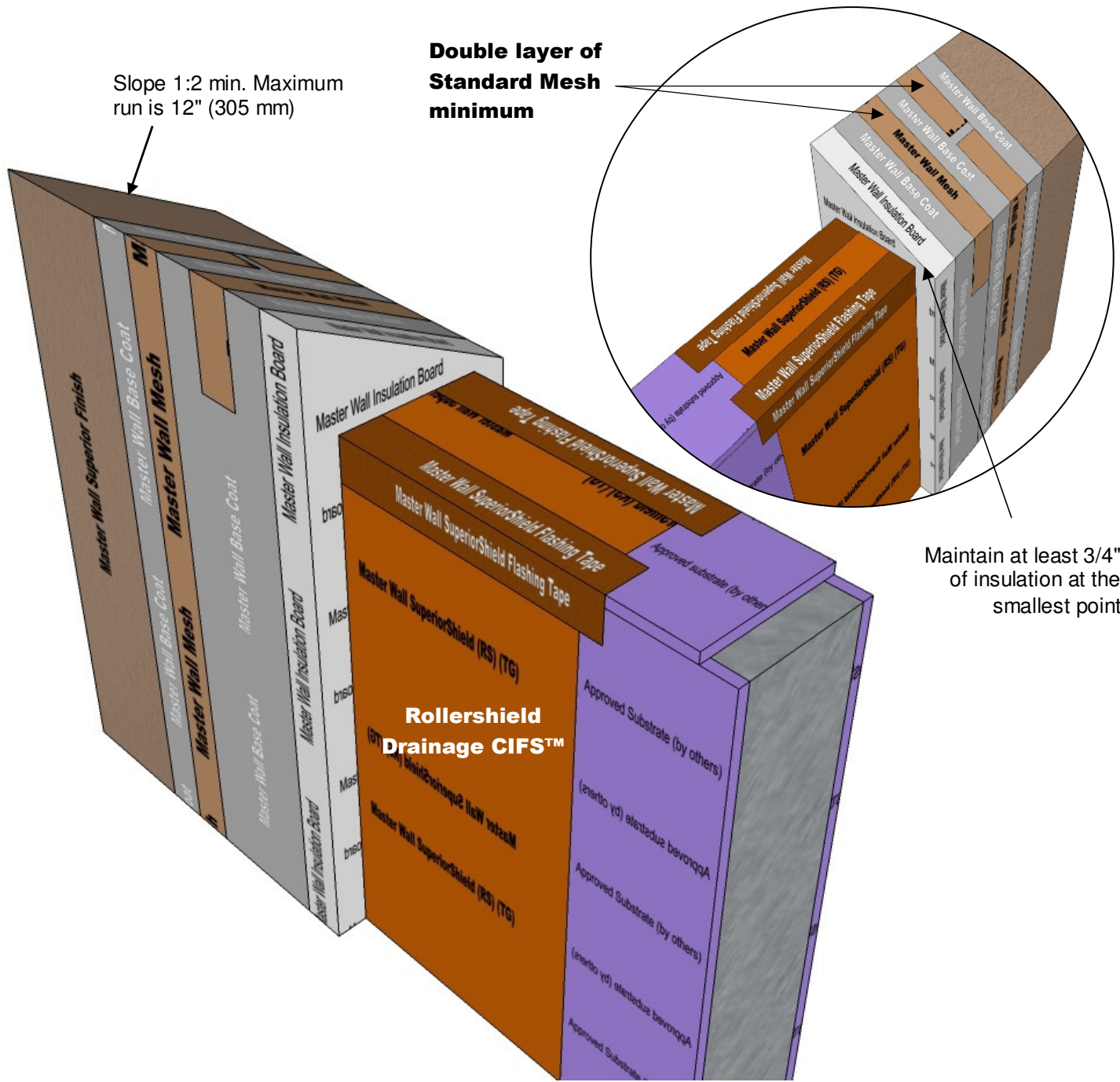




Rollershield Drainage CIFS™ – Continuously Insulated Section 07 24 19

Slope 1:2 min. Maximum run is 12" (305 mm)

Double layer of Standard Mesh minimum



Maintain at least 3/4" of insulation at the smallest point

RDCIFS-38 EIFS PARAPET CAP

Model Link: <https://3dwarehouse.sketchup.com/model/b31aff3f-6b94-4f92-adeb-ce0584ed85e9/Rollershield-Drainage-CIFS%E2%84%A2-EIFS-Parapet>

These drawings relay the conceptual conditions of Master Wall® Systems and are not the construction drawings. Ultimately the design and detailing of an entire wall system is the responsibility of a professional. These details will guide the design professional in the use of Master Wall® Products. Master Wall disclaims design, warranty or construction intent or responsibility. **Bold = Master Wall® Product.** ©2018 Master Wall Inc.®