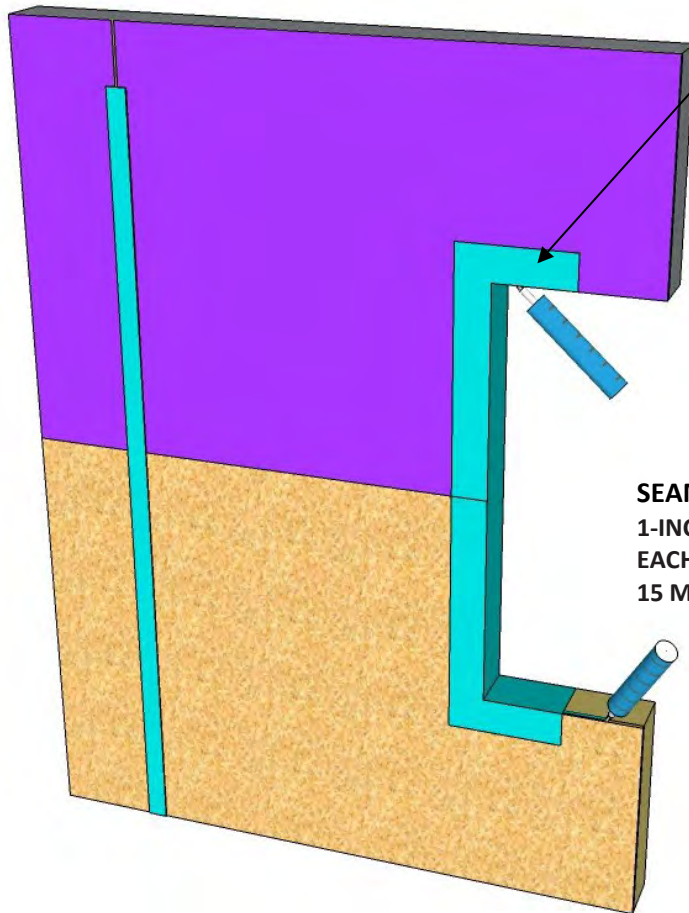


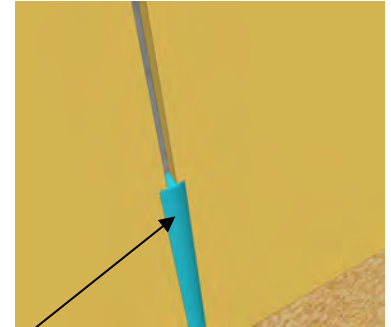


Master Wall Inc.
Building a Culture of Excellence

SYSTEM DETAIL



WINDOW FLASHING CONDITION, MINIMUM 2" (50 MM) INSIDE AND OUTSIDE OF OPENING – EXTEND INSIDE FLASHING AT OR PAST WINDOW UNIT FOR PROPER INTERIOR SEALING



SEAMING CONDITION, SPREAD 1-INCH (25 MM) BEYOND SEAM AT EACH SIDE TO A THICKNESS OF 12–15 MILS

FILLING JOINTS, SEAMS, AND CRACKS

- APPLY A THICK BEAD OF SUPERIORFLASH TO ALL SHEATHING JOINTS, SEAMS AND CRACKS. TREAT JOINTS RANGING FROM ¼ TO ½ INCH WITH BACKER ROD BEFORE APPLYING SUPERIORFLASH. ON PLYWOOD, SPOT WOOD KNOTS, DEEP CRACKS OR SURFACE IRREGULARITIES.
- USE A DRY JOINT KNIFE, TROWEL OR SPATULA TO TOOL AND SPREAD THE PRODUCT. SPREAD 1-INCH BEYOND SEAM AT EACH SIDE TO A THICKNESS OF 12–15 MILS.
- ALLOW TO SKIN BEFORE INSTALLING OTHER WATERPROOFING OR AIR BARRIER COMPONENTS.

SUPERIORFLASH DETAILING @ FRAMED WALLS

ROLLERSHIELD LAB / ROLLERSHIELD DRAINAGE CIFS®

M Master Wall Inc.
Building a Culture of Excellence

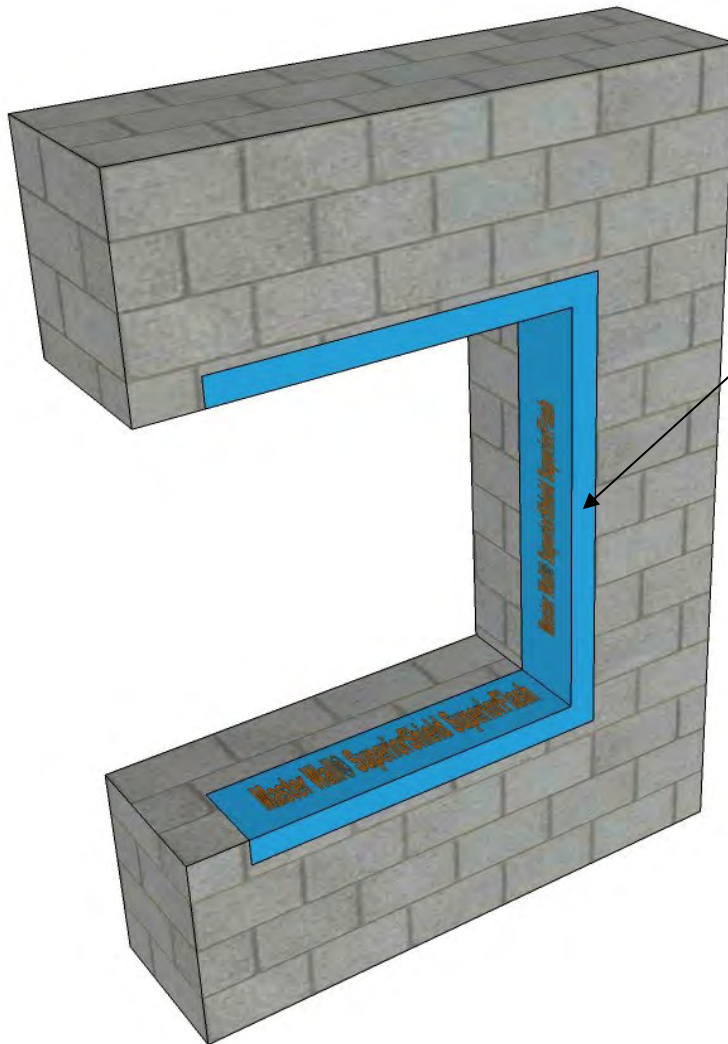
PO Box 397 · Fortson · GA · 31808 · 800-755-0825 · masterwall.com

These drawings relay the conceptual conditions of Master Wall® Systems and are not the construction drawings. Ultimately the design and detailing of an entire wall system is the responsibility of a professional. These details will guide the design professional in the use of Master Wall® Products. Master Wall disclaims design, warranty or construction intent or responsibility. Bold or Brand Name = Master Wall® Product. ©2024 Master Wall Inc.®



Master Wall Inc.
Building a Culture of Excellence

SYSTEM DETAIL



**WINDOW FLASHING CONDITION, MINIMUM 4"
INSIDE AND OUTSIDE OF OPENING**

WATERPROOFING ROUGH OPENINGS

- APPLY A BEAD OF PRODUCT IN EACH CORNER OF THE ROUGH OPENING. APPLY ADDITIONAL PRODUCT IN A ZIGZAG PATTERN OVER THE EXTERIOR FRAMING INSIDE THE ROUGH OPENING. SPREAD THE WET PRODUCT TO CREATE AN OPAQUE, MONOLITHIC FLASHING MEMBRANE.
- APPLY A THICK BEAD OF SUPERIORFLASH IN A ZIGZAG PATTERN TO THE EXTERIOR WALL SURROUNDING THE ROUGH OPENING. SPREAD THE PRODUCT TO CREATE AN OPAQUE, MONOLITHIC FLASHING MEMBRANE AT 12–15 MILS WHICH SURROUNDS THE ROUGH OPENING AND EXTENDS 2 TO 4 INCHES (50–100 MM) OVER THE FACE OF EXTERIOR WALL. NOTE: WHEN USING WITH EXISTING SHEET WEATHER RESISTIVE BARRIERS, EXTEND SUPERIORFLASH 8–10 INCHES (203–254 MM) OVER THE FACE OF THE EXTERIOR WALL TO ENSURE POSITIVE DRAINAGE.
- ALLOW TREATED SURFACES TO SKIN BEFORE INSTALLING WINDOWS, DOORS AND OTHER WALL ASSEMBLY, WATERPROOFING OR AIR BARRIER COMPONENTS.

SUPERIORFLASH DETAILING @ MASONRY OR CONCRETE WALLS

ROLLERSHIELD LAB / ROLLERSHIELD DRAINAGE CIFS®

M Master Wall Inc.
Building a Culture of Excellence

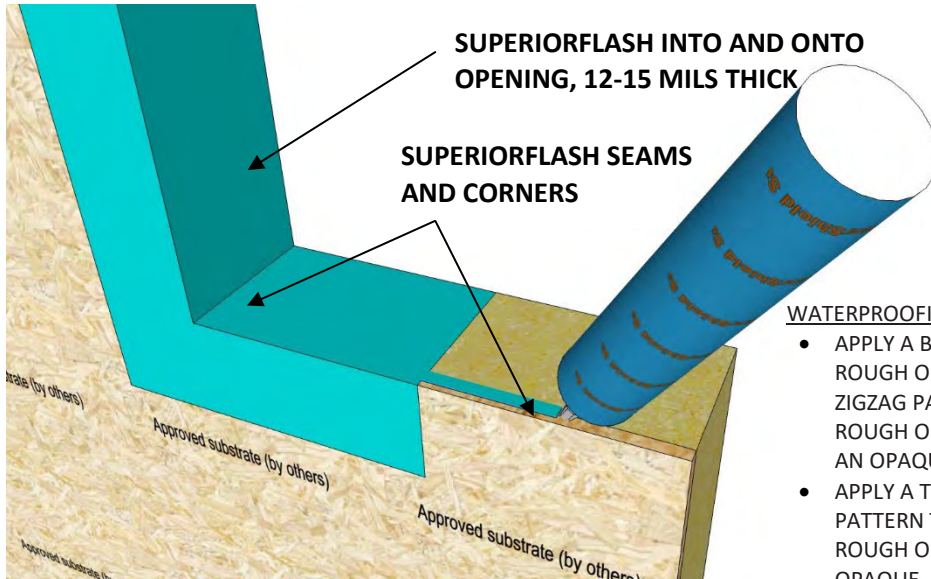
PO Box 397 · Fortson · GA · 31808 · 800-755-0825 · masterwall.com

These drawings relay the conceptual conditions of Master Wall® Systems and are not the construction drawings. Ultimately the design and detailing of an entire wall system is the responsibility of a professional. These details will guide the design professional in the use of Master Wall® Products. Master Wall disclaims design, warranty or construction intent or responsibility. Bold or Brand Name = Master Wall® Product. ©2024 Master Wall Inc.®



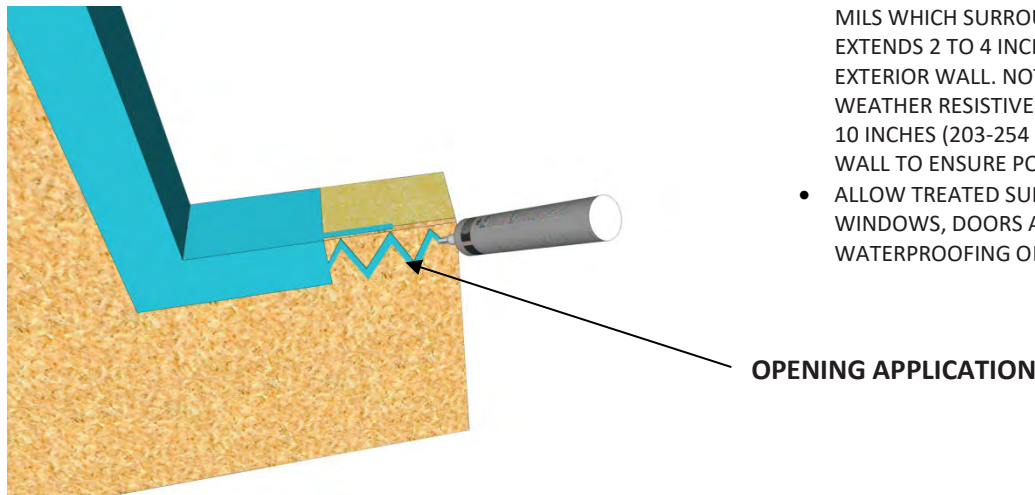
Master Wall Inc.®
Building a Culture of Excellence

SYSTEM DETAIL



WATERPROOFING ROUGH OPENINGS

- APPLY A BEAD OF PRODUCT IN EACH CORNER OF THE ROUGH OPENING. APPLY ADDITIONAL PRODUCT IN A ZIGZAG PATTERN OVER THE EXTERIOR FRAMING INSIDE THE ROUGH OPENING. SPREAD THE WET PRODUCT TO CREATE AN OPAQUE, MONOLITHIC FLASHING MEMBRANE.
- APPLY A THICK BEAD OF SUPERIORFLASH IN A ZIGZAG PATTERN TO THE EXTERIOR WALL SURROUNDING THE ROUGH OPENING. SPREAD THE PRODUCT TO CREATE AN OPAQUE, MONOLITHIC FLASHING MEMBRANE AT 12–15 MILS WHICH SURROUNDS THE ROUGH OPENING AND EXTENDS 2 TO 4 INCHES (50–100 MM) OVER THE FACE OF EXTERIOR WALL. NOTE: WHEN USING WITH EXISTING SHEET WEATHER RESISTIVE BARRIERS, EXTEND SUPERIORFLASH 8-10 INCHES (203-254 MM) OVER THE FACE OF THE EXTERIOR WALL TO ENSURE POSITIVE DRAINAGE.
- ALLOW TREATED SURFACES TO SKIN BEFORE INSTALLING WINDOWS, DOORS AND OTHER WALL ASSEMBLY, WATERPROOFING OR AIR BARRIER COMPONENTS.



SUPERIORFLASH APPLICATION

ROLLERSHIELD LAB / ROLLERSHIELD DRAINAGE CIFS®

M Master Wall Inc.®
Building a Culture of Excellence

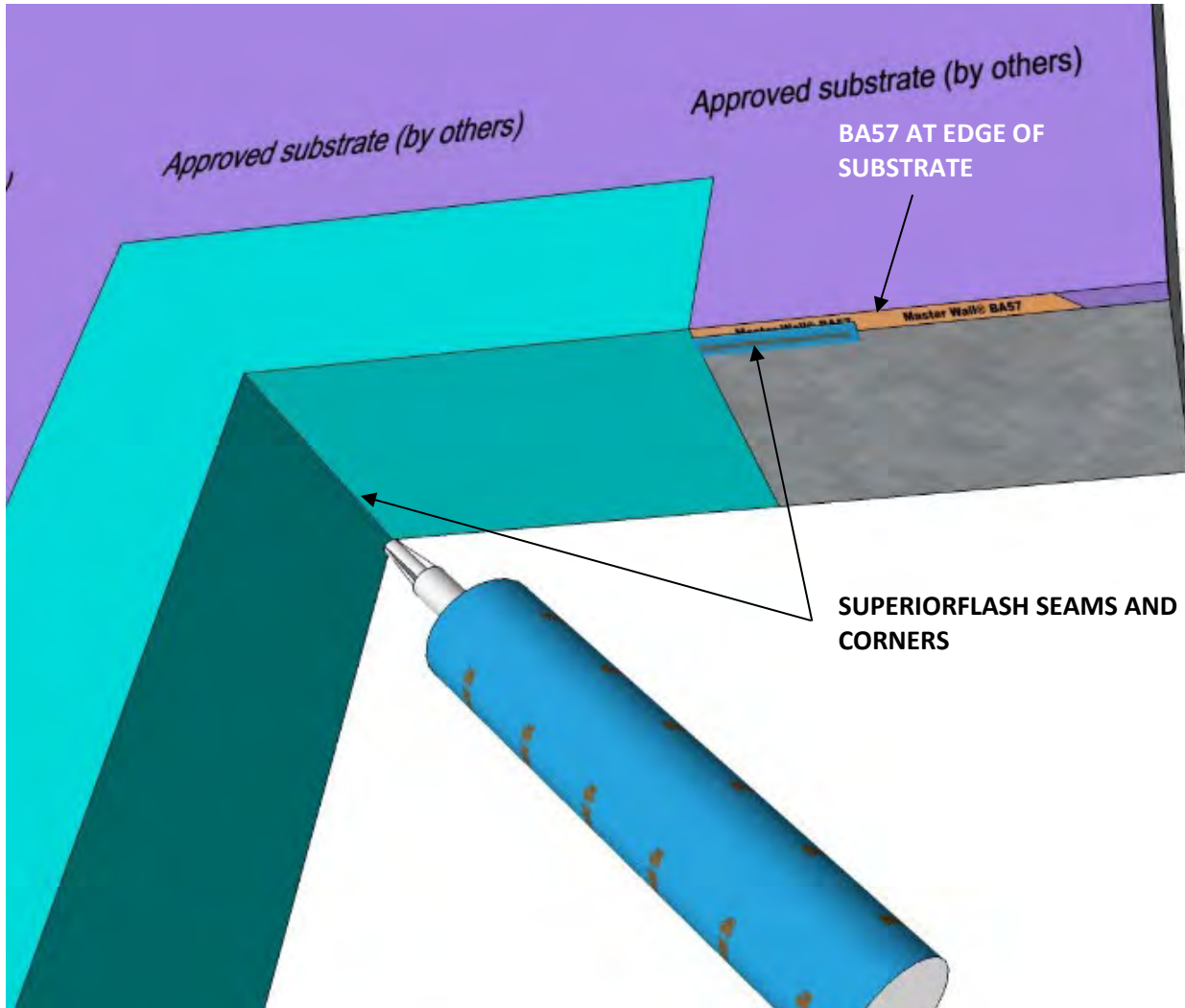
PO Box 397 · Fortson · GA · 31808 · 800-755-0825 · masterwall.com

These drawings relay the conceptual conditions of Master Wall® Systems and are not the construction drawings. Ultimately the design and detailing of an entire wall system is the responsibility of a professional. These details will guide the design professional in the use of Master Wall® Products. Master Wall disclaims design, warranty or construction intent or responsibility. Bold or Brand Name = Master Wall® Product. ©2024 Master Wall Inc.®



Master Wall Inc.®
Building a Culture of Excellence

SYSTEM DETAIL



SUPERIORFLASH APPLICATION OVER GYPSUM SUBSTRATES

ROLLERSHIELD LAB / ROLLERSHIELD DRAINAGE CIFS®

M Master Wall Inc.®
Building a Culture of Excellence

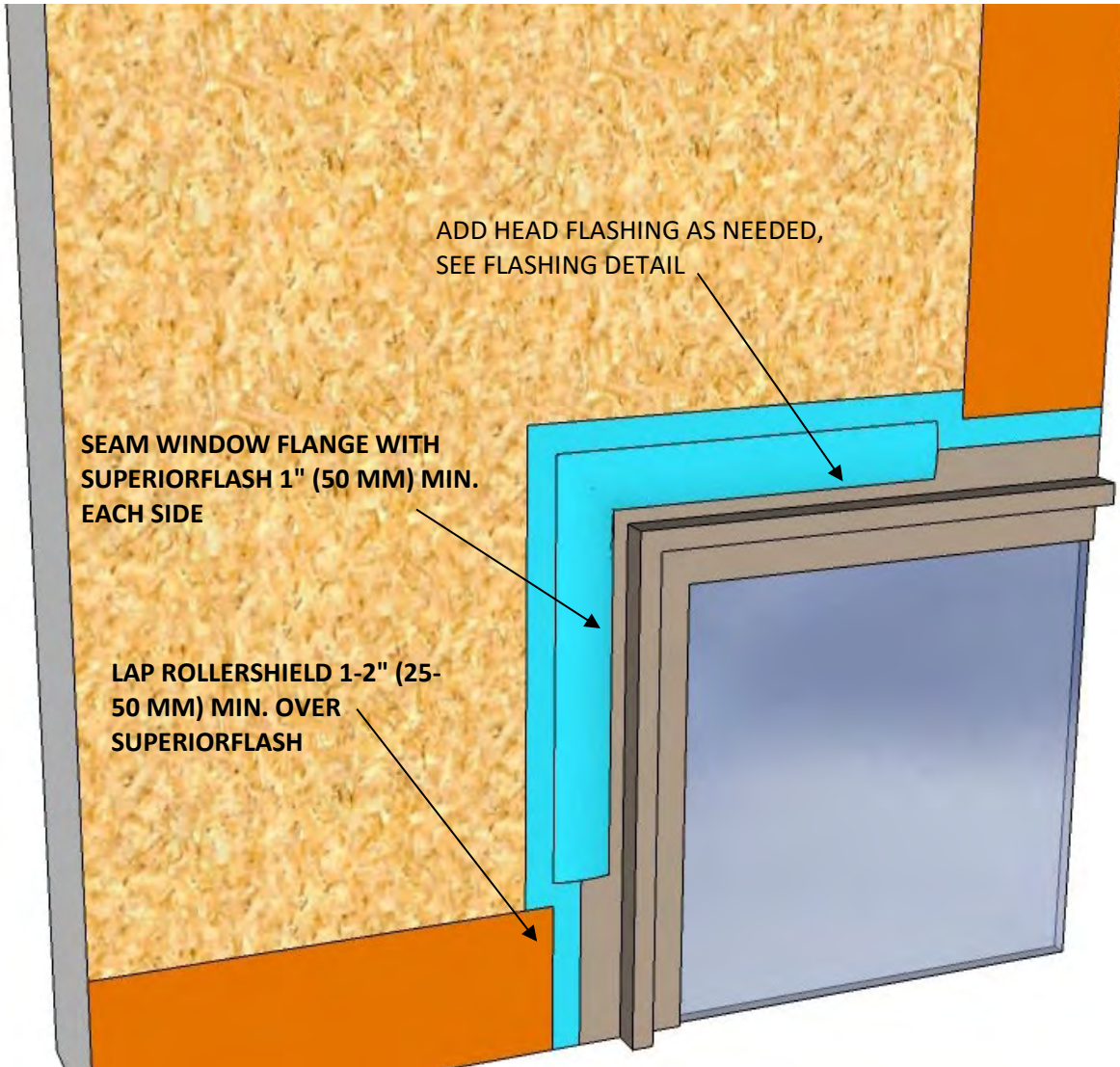
PO Box 397 · Fortson · GA · 31808 · 800-755-0825 · masterwall.com

These drawings relay the conceptual conditions of Master Wall® Systems and are not the construction drawings. Ultimately the design and detailing of an entire wall system is the responsibility of a professional. These details will guide the design professional in the use of Master Wall® Products. Master Wall disclaims design, warranty or construction intent or responsibility. Bold or Brand Name = Master Wall® Product. ©2024 Master Wall Inc.®



Master Wall Inc.®
Building a Culture of Excellence

SYSTEM DETAIL



FLANGED WINDOW SEALING AND ROLLERSHIELD INTEGRATION

ROLLERSHIELD LAB / ROLLERSHIELD DRAINAGE CIFS®

M Master Wall Inc.®
Building a Culture of Excellence

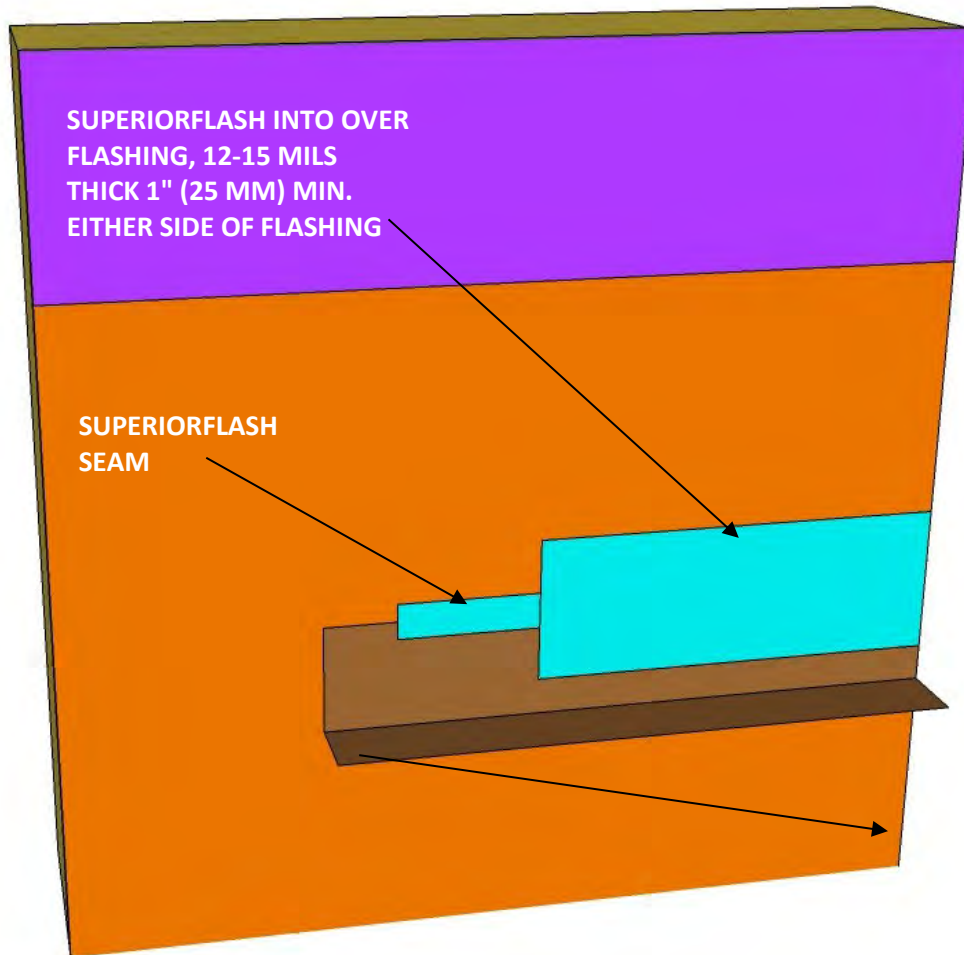
PO Box 397 · Fortson · GA · 31808 · 800-755-0825 · masterwall.com

These drawings relay the conceptual conditions of Master Wall® Systems and are not the construction drawings. Ultimately the design and detailing of an entire wall system is the responsibility of a professional. These details will guide the design professional in the use of Master Wall® Products. Master Wall disclaims design, warranty or construction intent or responsibility. Bold or Brand Name = Master Wall® Product. ©2024 Master Wall Inc.®



Master Wall Inc.®
Building a Culture of Excellence

SYSTEM DETAIL



FLASHING TRANSITIONS

- APPLY A GENEROUS BEAD OF SUPERIORFLASH® TO THE TOP EDGE OF THE FLASHING LEG.
- SPREAD THE WET PRODUCT TO CREATE A MONOLITHIC "CAP FLASH" FLASHING MEMBRANE THAT EXTENDS 2 INCHES (51 MM) UP THE VERTICAL FACE OF THE EXTERIOR WALL AND DOWN OVER THE FASTENER HEADS OF THE METAL FLASHING.

SUPERIORFLASH TYPICAL FLASHING

ROLLERSHIELD LAB / ROLLERSHIELD DRAINAGE CIFS®

M Master Wall Inc.®
Building a Culture of Excellence

PO Box 397 · Fortson · GA · 31808 · 800-755-0825 · masterwall.com

These drawings relay the conceptual conditions of Master Wall® Systems and are not the construction drawings. Ultimately the design and detailing of an entire wall system is the responsibility of a professional. These details will guide the design professional in the use of Master Wall® Products. Master Wall disclaims design, warranty or construction intent or responsibility. Bold or Brand Name = Master Wall® Product. ©2024 Master Wall Inc.®