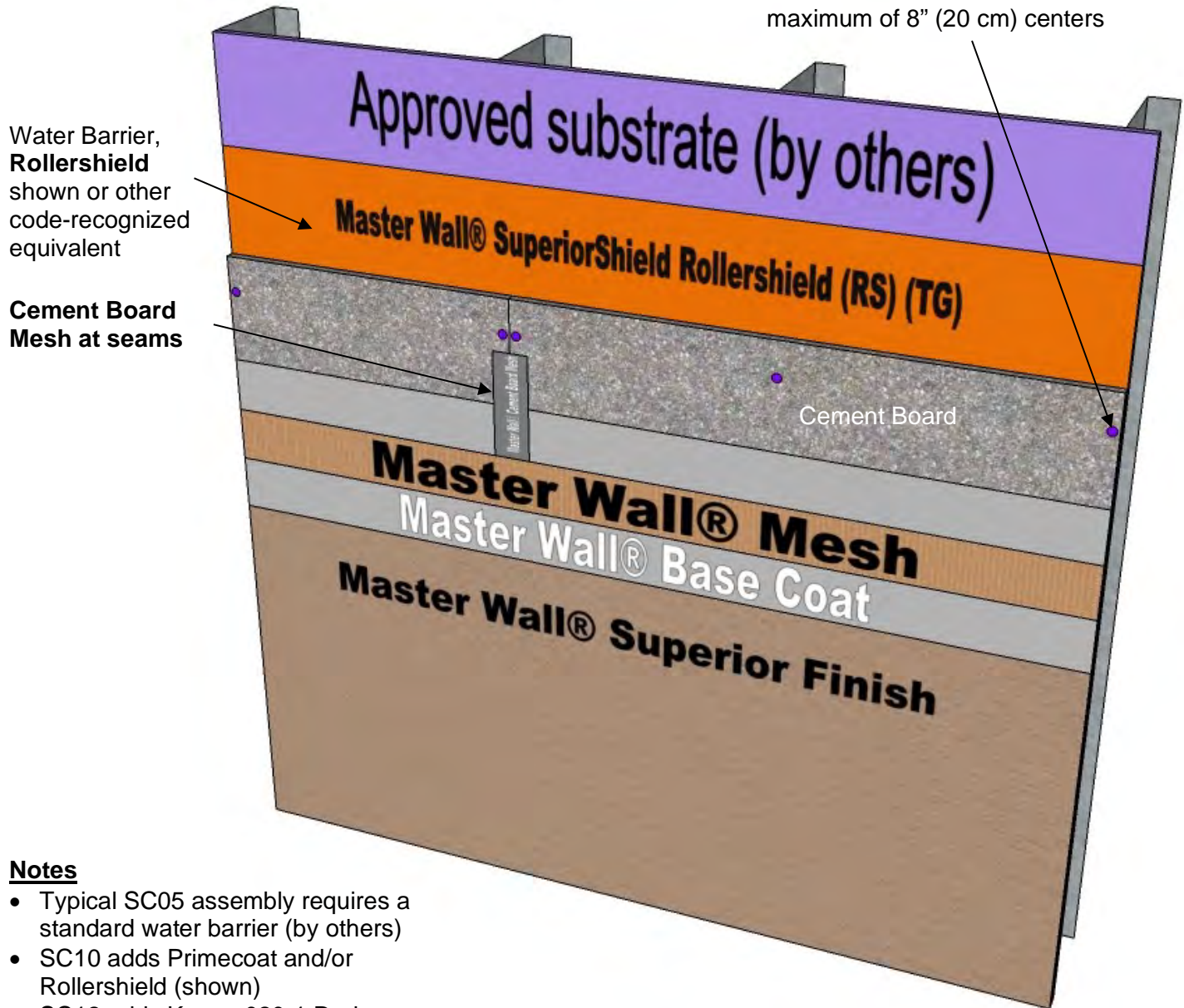


Stucco Cement Board Coating System Detail

Fasten to Framing Members per manufacturer's instructions at a maximum of 8" (20 cm) centers



Notes

- Typical SC05 assembly requires a standard water barrier (by others)
- SC10 adds Primecoat and/or Rollershield (shown)
- SC12 adds Keene 020-1 Drainage Mat under SC10

SC-01 Typical Cross Section

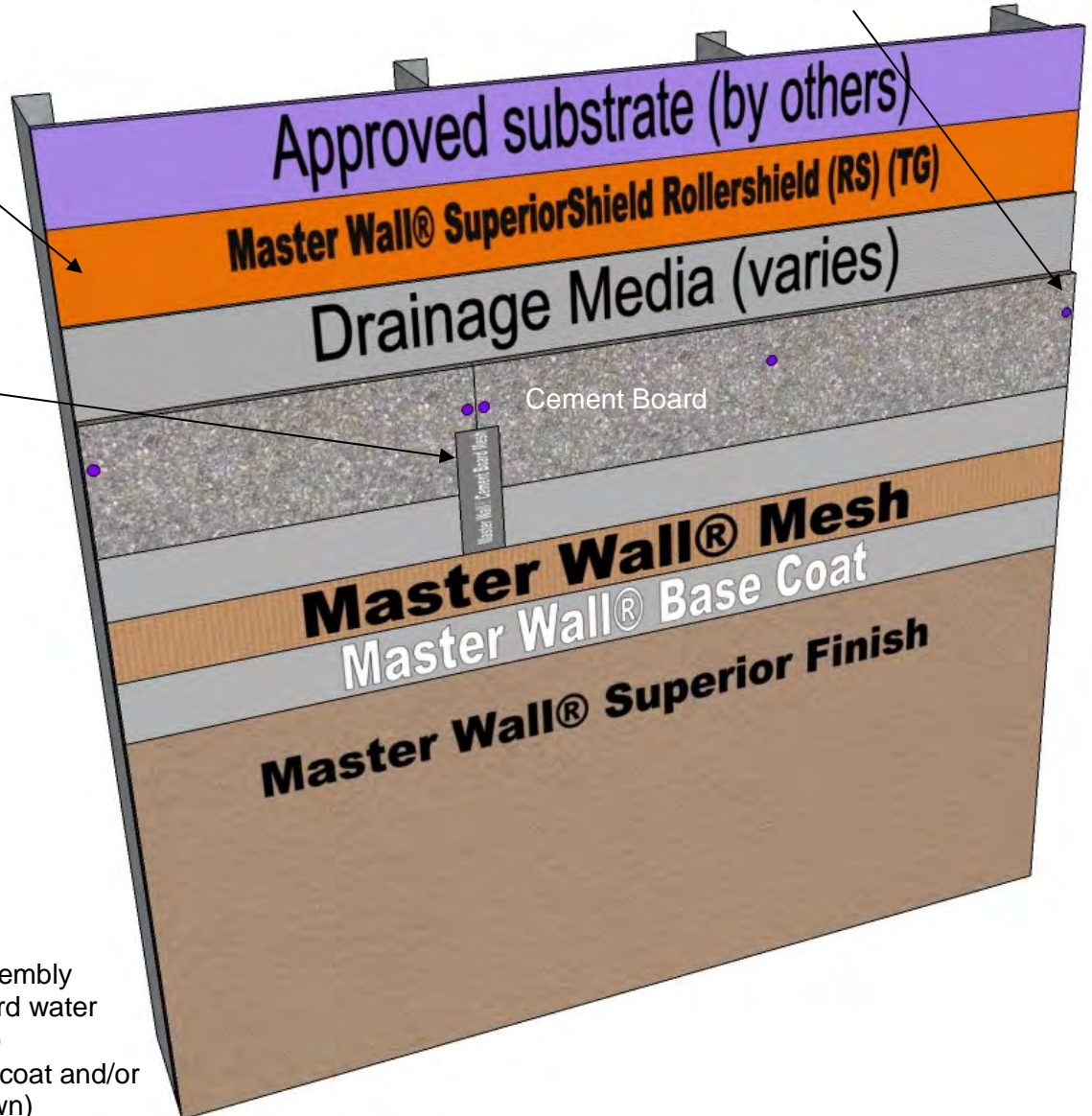
These drawings relay the conceptual conditions of Master Wall® Systems and are not the construction drawings. Ultimately the design and detailing of an entire wall system is the responsibility of a professional. These details will guide the design professional in the use of Master Wall® Products. Master Wall disclaims design, warranty or construction intent or responsibility. Bold or Brand Name = Master Wall® Product. ©2020 Master Wall Inc.®

Stucco Cement Board Coating System Detail

Fasten to Framing Members per manufacturer's instructions at a maximum of 8" (20 cm) centers

Water Barrier, **Rollershield** shown or other code-recognized equivalent

Cement Board Mesh at seams



Notes

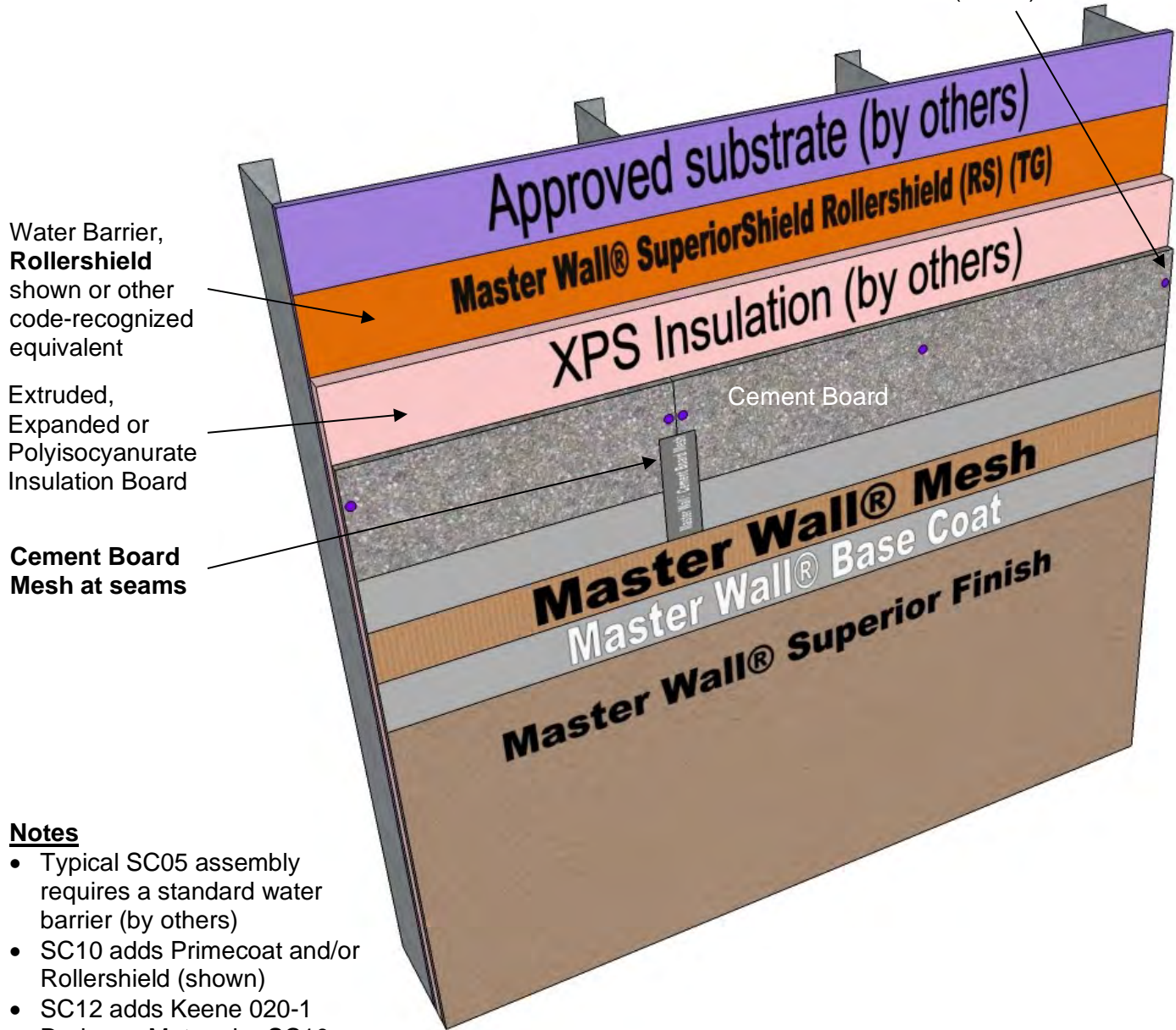
- Typical SC05 assembly requires a standard water barrier (by others)
- SC10 adds Primecoat and/or Rollershield (shown)
- SC12 adds Keene 020-1 Drainage Mat under SC10

SC-02 Typical Cross Section with Drainage Mat

These drawings relay the conceptual conditions of Master Wall® Systems and are not the construction drawings. Ultimately the design and detailing of an entire wall system is the responsibility of a professional. These details will guide the design professional in the use of Master Wall® Products. Master Wall disclaims design, warranty or construction intent or responsibility. Bold or Brand Name = Master Wall® Product. ©2020 Master Wall Inc.®

Stucco Cement Board Coating System Detail

Fasten to Framing Members per manufacturer's instructions at a maximum of 8" (20 cm) centers



Notes

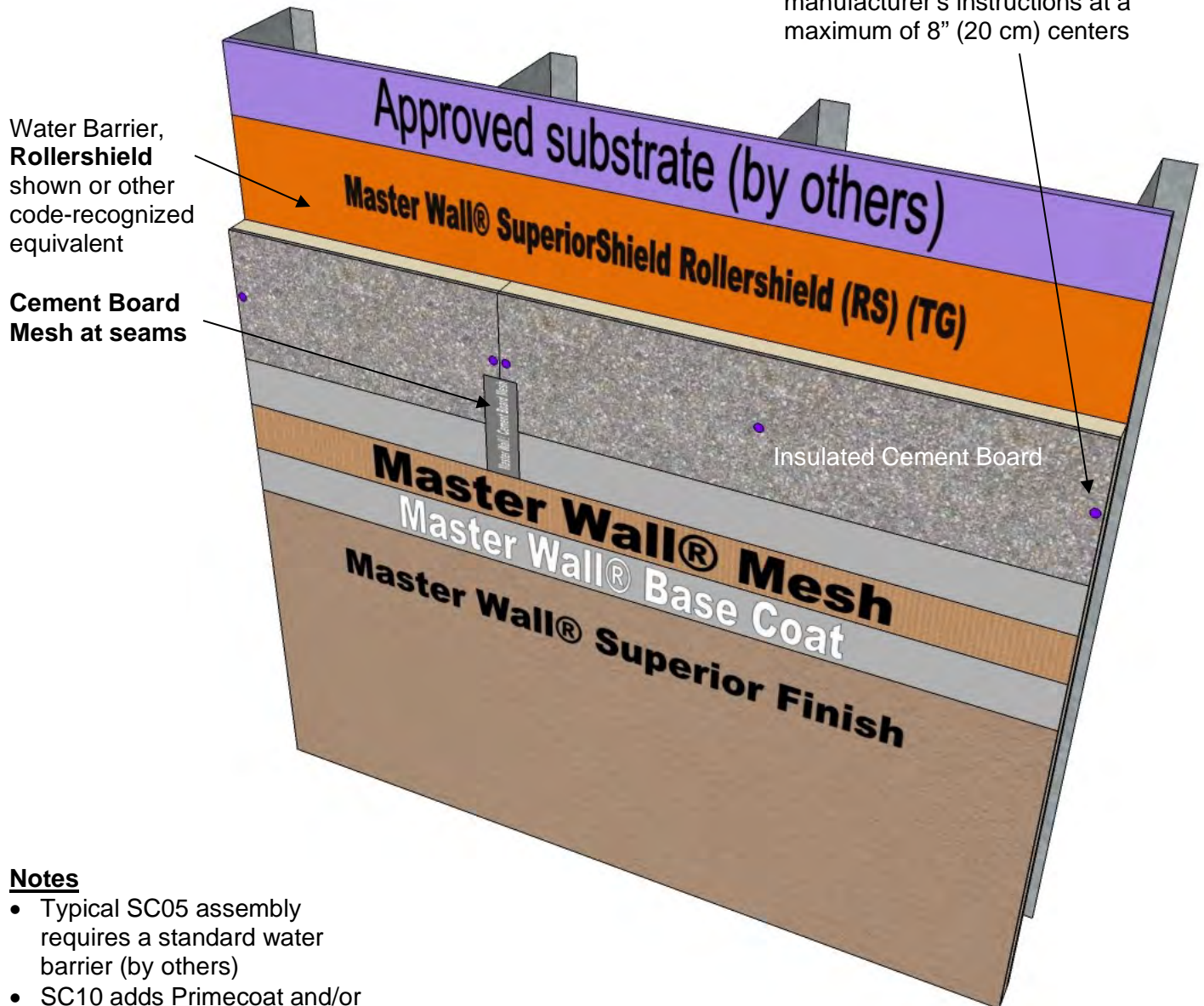
- Typical SC05 assembly requires a standard water barrier (by others)
- SC10 adds Primecoat and/or Rollershield (shown)
- SC12 adds Keene 020-1 Drainage Mat under SC10

SC-03 Typical Cross Section with Insulation Board

These drawings relay the conceptual conditions of Master Wall® Systems and are not the construction drawings. Ultimately the design and detailing of an entire wall system is the responsibility of a professional. These details will guide the design professional in the use of Master Wall® Products. Master Wall disclaims design, warranty or construction intent or responsibility. Bold or Brand Name = Master Wall® Product. ©2020 Master Wall Inc.®

Stucco Cement Board Coating System Detail

Fasten to Framing Members per manufacturer's instructions at a maximum of 8" (20 cm) centers



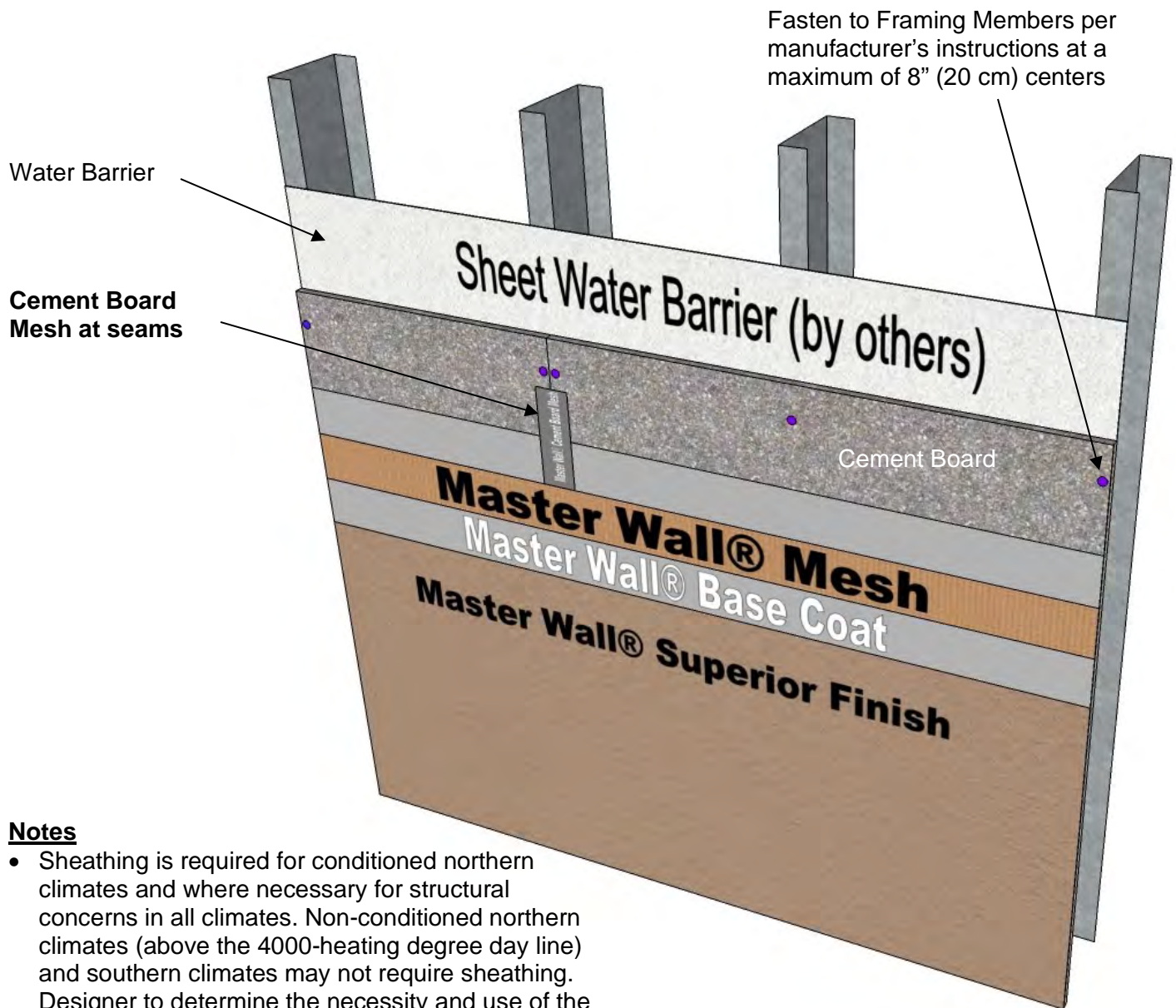
Notes

- Typical SC05 assembly requires a standard water barrier (by others)
- SC10 adds Primecoat and/or Rollershield (shown)
- SC12 adds Keene 020-1 Drainage Mat under SC10

SC-04 Typical Cross Section with Insulated Cement Board

These drawings relay the conceptual conditions of Master Wall® Systems and are not the construction drawings. Ultimately the design and detailing of an entire wall system is the responsibility of a professional. These details will guide the design professional in the use of Master Wall® Products. Master Wall disclaims design, warranty or construction intent or responsibility. Bold or Brand Name = Master Wall® Product. ©2020 Master Wall Inc.®

Stucco Cement Board Coating System Detail



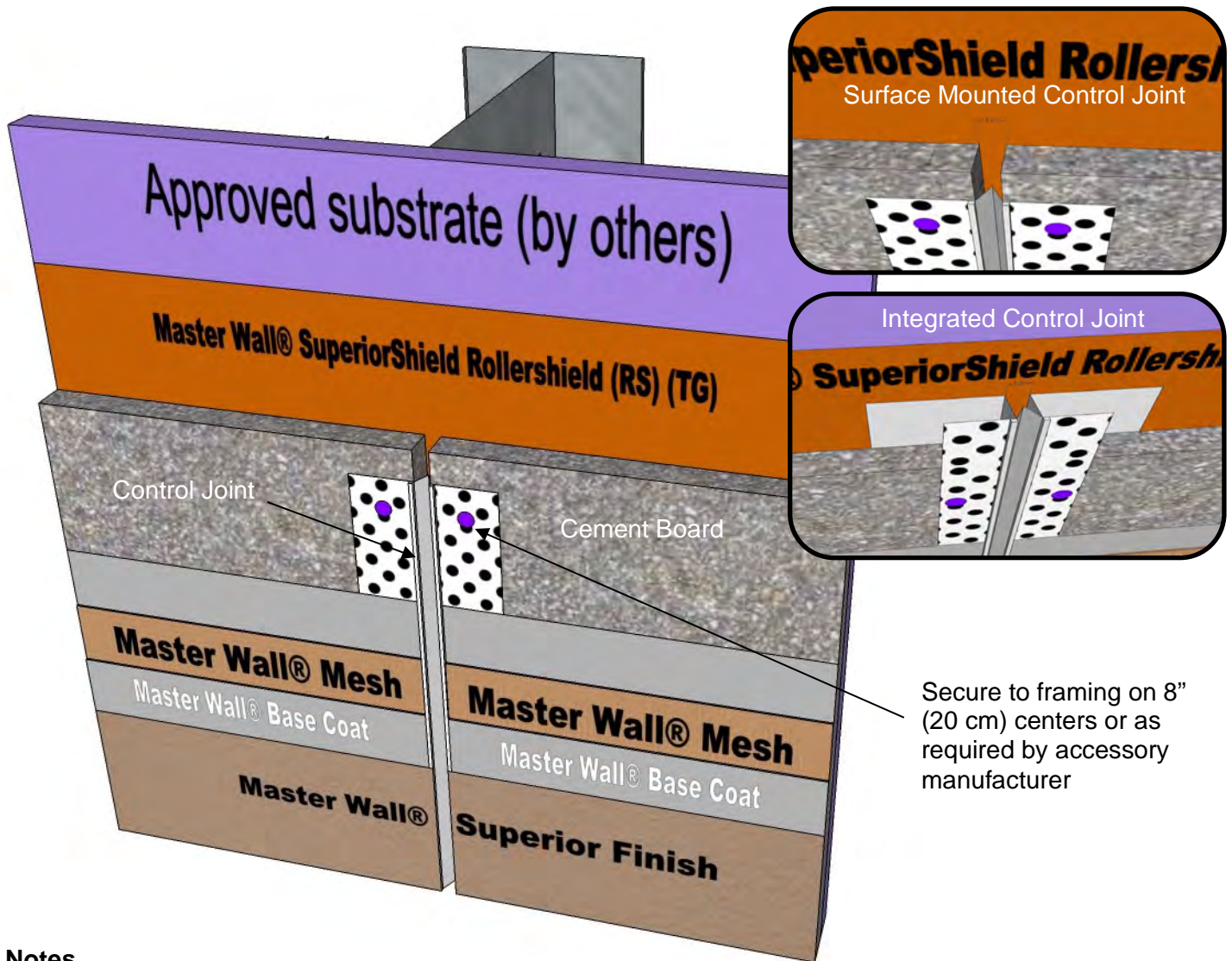
Notes

- Sheathing is required for conditioned northern climates and where necessary for structural concerns in all climates. Non-conditioned northern climates (above the 4000-heating degree day line) and southern climates may not require sheathing. Designer to determine the necessity and use of the sheathing.
- Typical SC05 assembly requires a standard water barrier (by others)
- SC10 adds Primecoat

SC-05 Typical Cross Section Over Framing

These drawings relay the conceptual conditions of Master Wall® Systems and are not the construction drawings. Ultimately the design and detailing of an entire wall system is the responsibility of a professional. These details will guide the design professional in the use of Master Wall® Products. Master Wall disclaims design, warranty or construction intent or responsibility. Bold or Brand Name = Master Wall® Product. ©2020 Master Wall Inc.®

Stucco Cement Board Coating System Detail



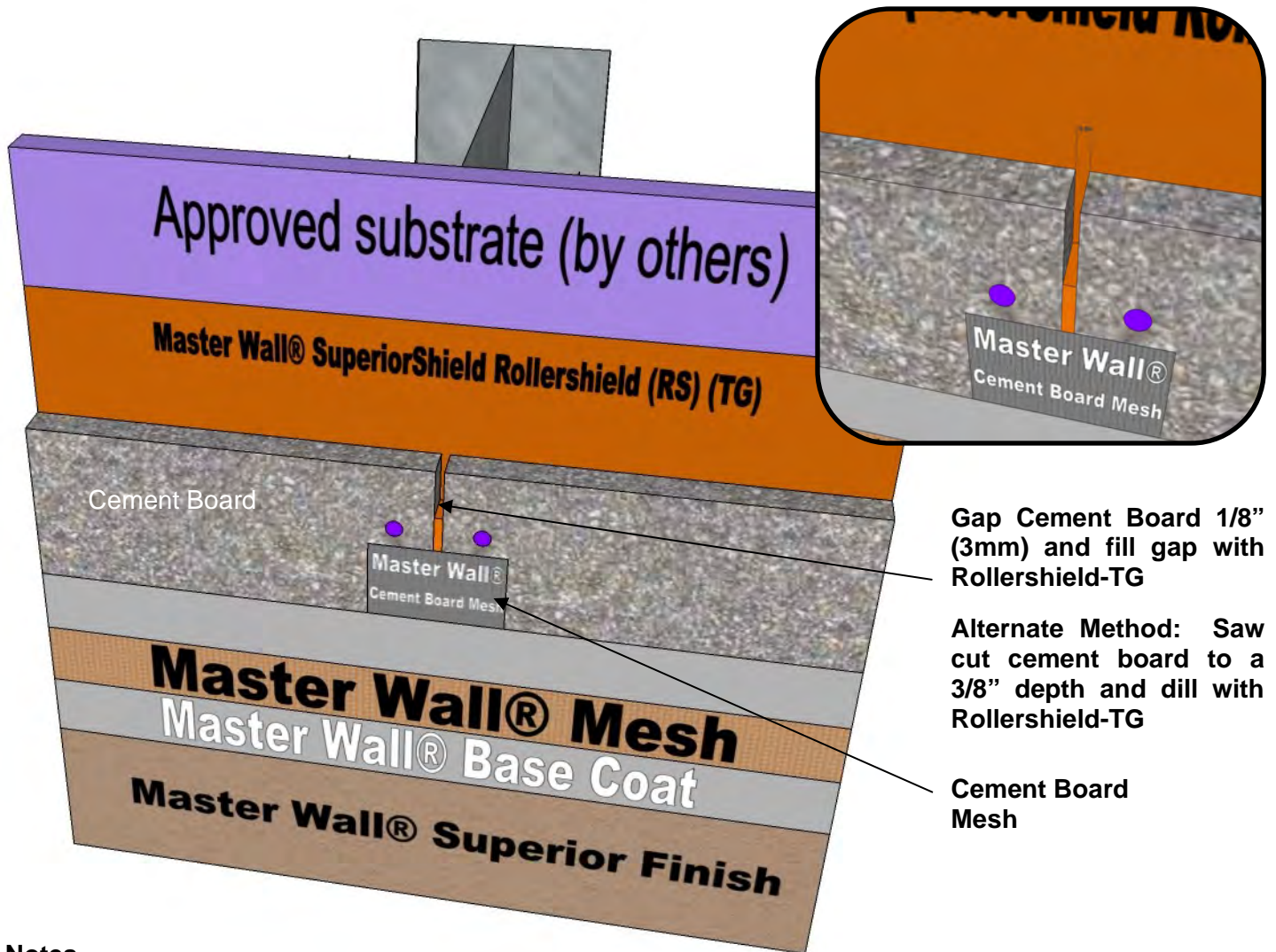
Notes

- Control joints are required and should be located by the designer at the following locations on the construction documents:
 - Maximum length shall not exceed 20 lineal feet in any direction
 - 160 sf is the maximum overall area
 - One dimension shall not exceed 2-1/2 times the other dimension
 - At all dissimilar substrate/sheathing transitions
- Double studs may be required to accommodate control joints or where it is needed to provide a fastening base for sheathing board joints.

SC-06 Control Joint Detail

These drawings relay the conceptual conditions of Master Wall® Systems and are not the construction drawings. Ultimately the design and detailing of an entire wall system is the responsibility of a professional. These details will guide the design professional in the use of Master Wall® Products. Master Wall disclaims design, warranty or construction intent or responsibility. Bold or Brand Name = Master Wall® Product. ©2020 Master Wall Inc.®

Stucco Cement Board Coating System Detail



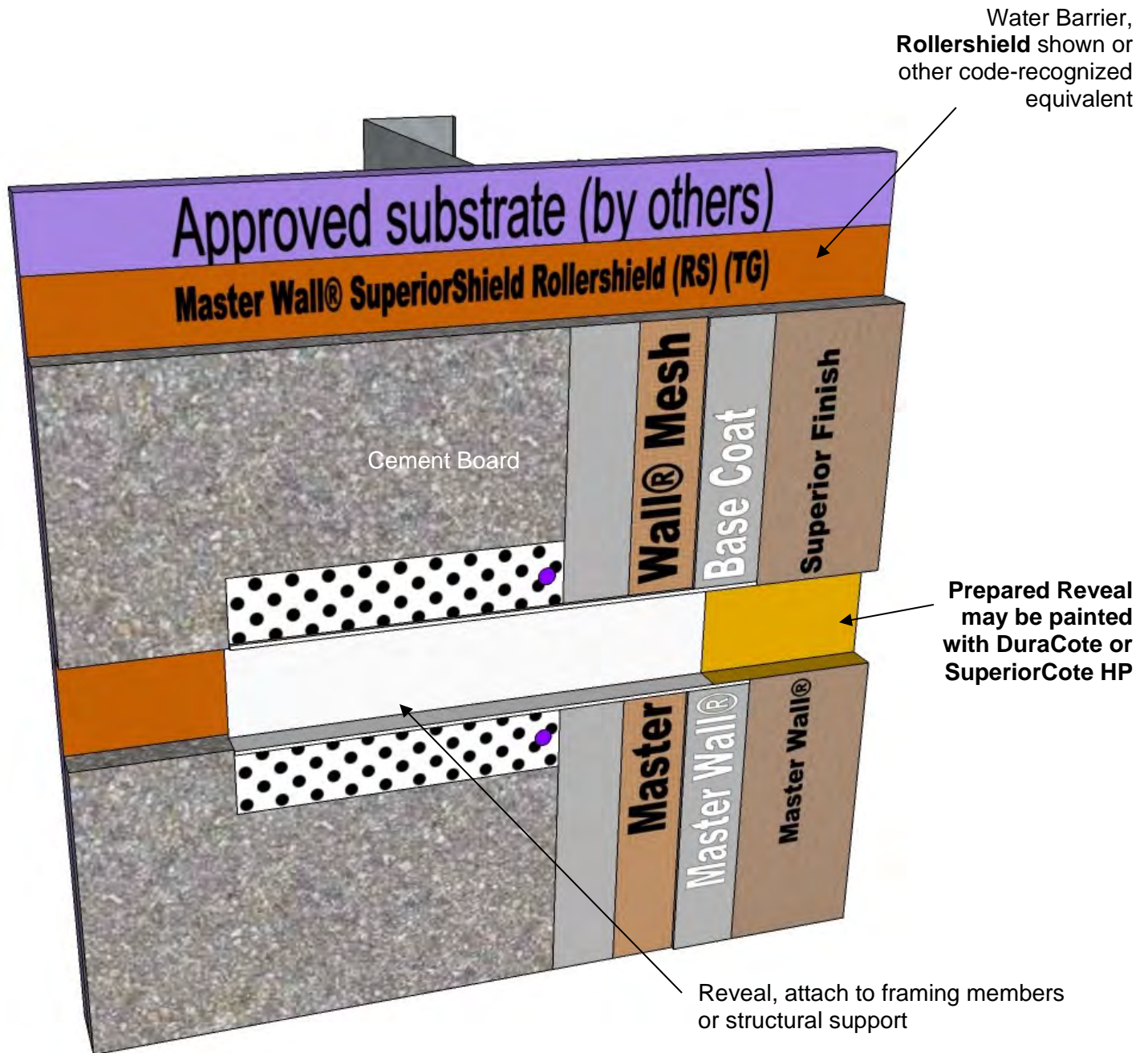
Notes

- Control joints are required and should be located by the designer at the following locations on the construction documents:
 - Maximum length shall not exceed 20 lineal feet in any direction
 - 160 sf is the maximum overall area
 - One dimension shall not exceed 2-1/2 times the other dimension
 - At all dissimilar substrate/sheathing transitions
- Double studs may be required to accommodate control joints or where it is needed to provide a fastening base for sheathing board joints.
- Cracking or signs of movement may occur at joint location.

SC-07 Hidden Control Joint Detail

These drawings relay the conceptual conditions of Master Wall® Systems and are not the construction drawings. Ultimately the design and detailing of an entire wall system is the responsibility of a professional. These details will guide the design professional in the use of Master Wall® Products. Master Wall disclaims design, warranty or construction intent or responsibility. Bold or Brand Name = Master Wall® Product. ©2020 Master Wall Inc.®

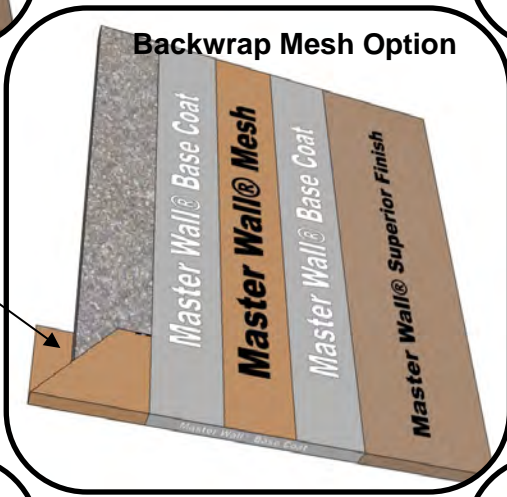
Stucco Cement Board Coating System Detail



SC-08 Typical Reveal

These drawings relay the conceptual conditions of Master Wall® Systems and are not the construction drawings. Ultimately the design and detailing of an entire wall system is the responsibility of a professional. These details will guide the design professional in the use of Master Wall® Products. Master Wall disclaims design, warranty or construction intent or responsibility. Bold or Brand Name = Master Wall® Product. ©2020 Master Wall Inc.®

Stucco Cement Board Coating System Detail



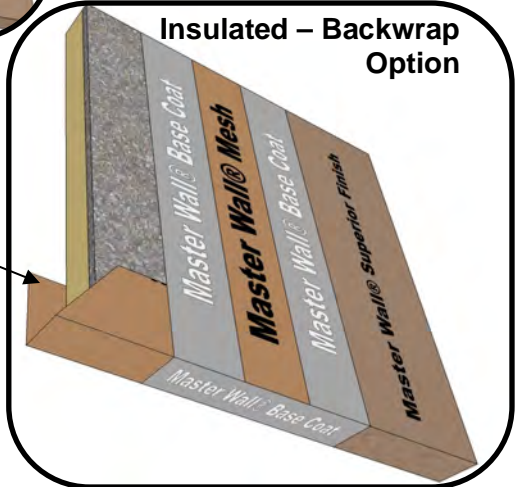
Wrap Mesh 2-1/2"
(63.5 mm)

Insulated – Plastic Accessory Option



Wrap Mesh 2-1/2"
(63.5 mm)

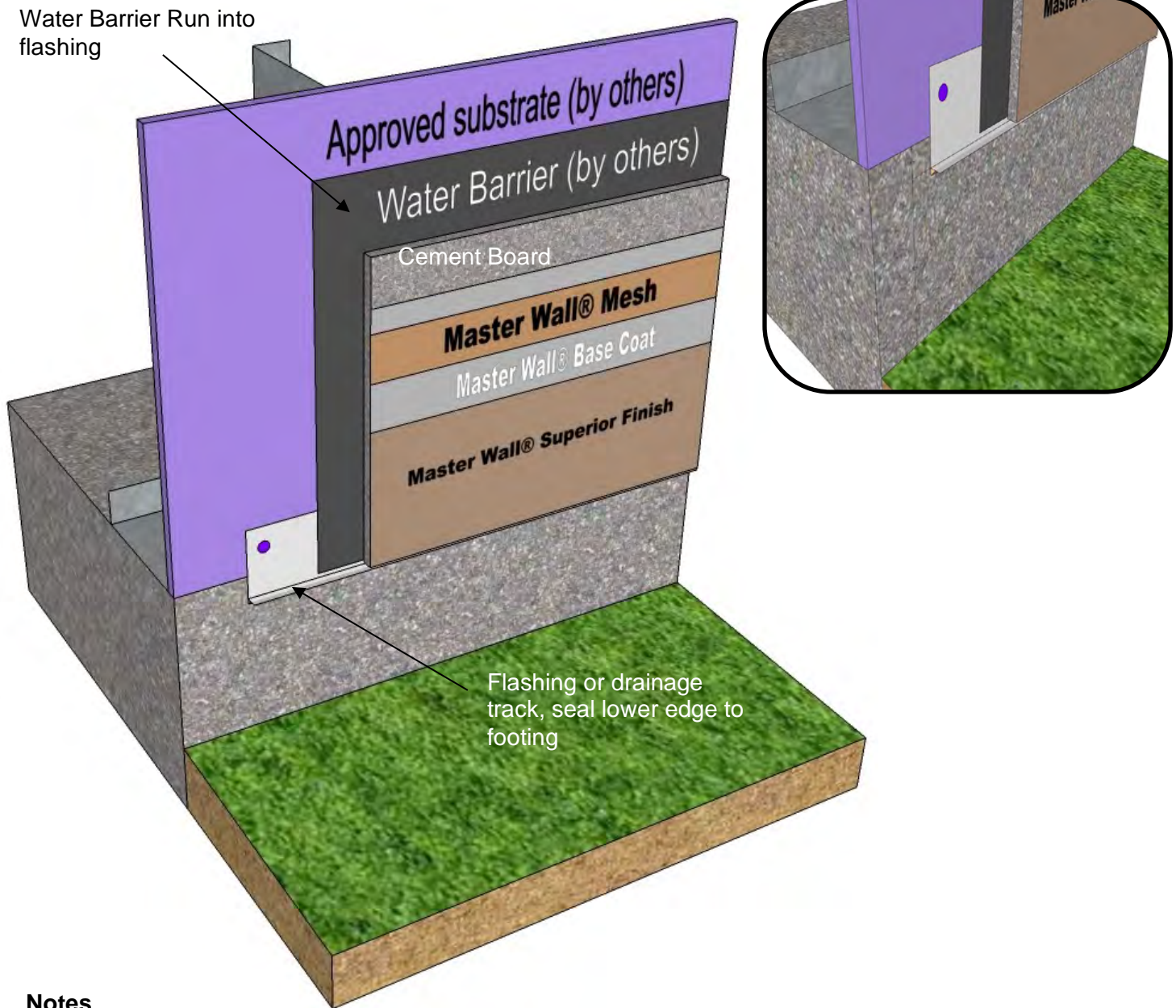
Insulated – Backwrap Mesh Option



SC-09 Cement Board Encapsulation Options

These drawings relay the conceptual conditions of Master Wall® Systems and are not the construction drawings. Ultimately the design and detailing of an entire wall system is the responsibility of a professional. These details will guide the design professional in the use of Master Wall® Products. Master Wall disclaims design, warranty or construction intent or responsibility. Bold or Brand Name = Master Wall® Product. ©2020 Master Wall Inc.®

Stucco Cement Board Coating System Detail



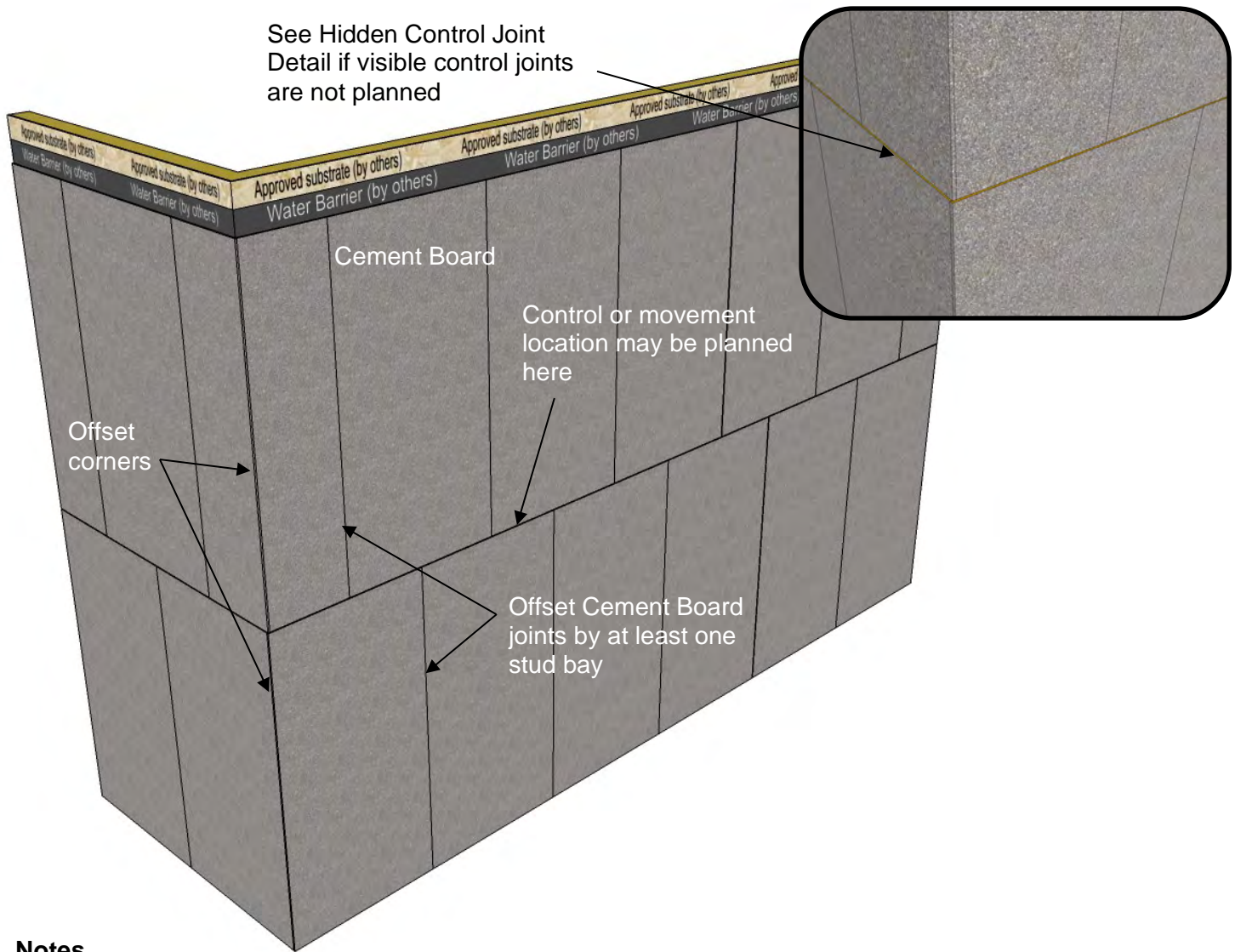
Notes

- Place flashing 1" (25 mm) onto foundation.
- Keep system 6" (152 mm) above grade, a minimum of 2" (50 mm) above unsupported pavement, or 3/4" (19 mm) above supported floors.

SC-10 Detail at Grade

These drawings relay the conceptual conditions of Master Wall® Systems and are not the construction drawings. Ultimately the design and detailing of an entire wall system is the responsibility of a professional. These details will guide the design professional in the use of Master Wall® Products. Master Wall disclaims design, warranty or construction intent or responsibility. Bold or Brand Name = Master Wall® Product. ©2020 Master Wall Inc.®

Stucco Cement Board Coating System Detail



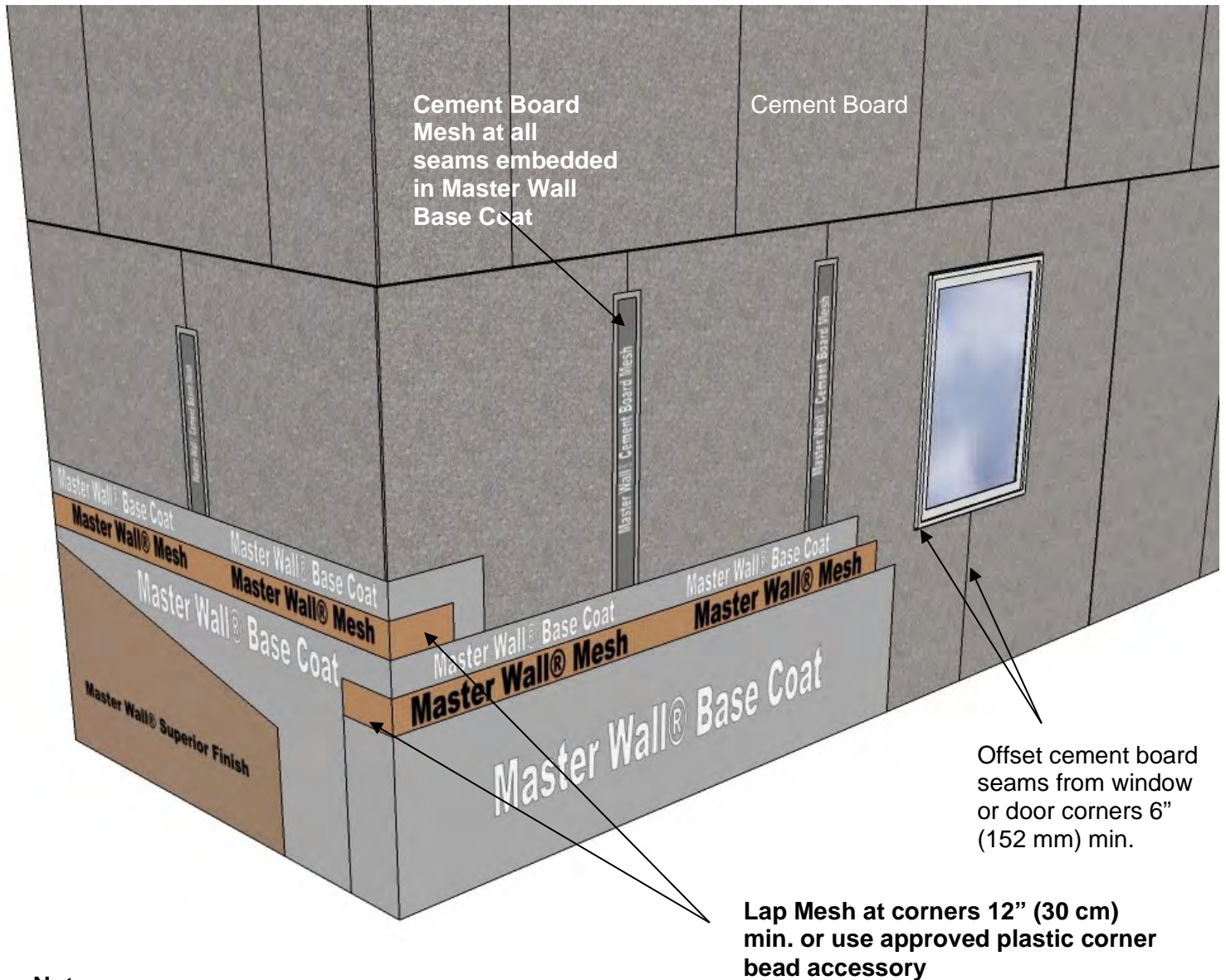
Notes

- Attach cement board to framing members using cement board manufacturer approved coated fasteners spaced as required and a maximum of 8" (20.3 cm) centers.
- Offset cement board joints at window and door openings (See Mesh Layout Detail SC-12).
- Gap all wood-based sheathing substrates 1/8" (3 mm) minimum per APA instructions to avoid or reduce cracking in the system.

SC-11 Cement Board Layout

These drawings relay the conceptual conditions of Master Wall® Systems and are not the construction drawings. Ultimately the design and detailing of an entire wall system is the responsibility of a professional. These details will guide the design professional in the use of Master Wall® Products. Master Wall disclaims design, warranty or construction intent or responsibility. Bold or Brand Name = Master Wall® Product. ©2020 Master Wall Inc.®

Stucco Cement Board Coating System Detail



Notes

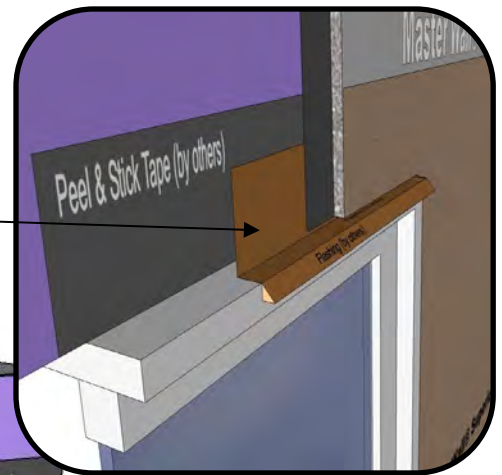
- Overlap mesh seams 2-1/2" (63.5 mm) min.

SC-12 Mesh Layout

These drawings relay the conceptual conditions of Master Wall® Systems and are not the construction drawings. Ultimately the design and detailing of an entire wall system is the responsibility of a professional. These details will guide the design professional in the use of Master Wall® Products. Master Wall disclaims design, warranty or construction intent or responsibility. Bold or Brand Name = Master Wall® Product. ©2020 Master Wall Inc.®

Stucco Cement Board Coating System Detail

Head Flashing with End Dams and sealed lower edge. Lap water barrier onto flashing.

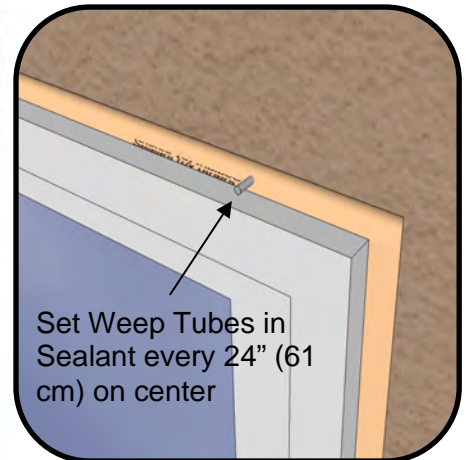


SC-13 Window Head with Flashing

These drawings relay the conceptual conditions of Master Wall® Systems and are not the construction drawings. Ultimately the design and detailing of an entire wall system is the responsibility of a professional. These details will guide the design professional in the use of Master Wall® Products. Master Wall disclaims design, warranty or construction intent or responsibility. Bold or Brand Name = Master Wall® Product. ©2020 Master Wall Inc.®

Stucco Cement Board Coating System Detail

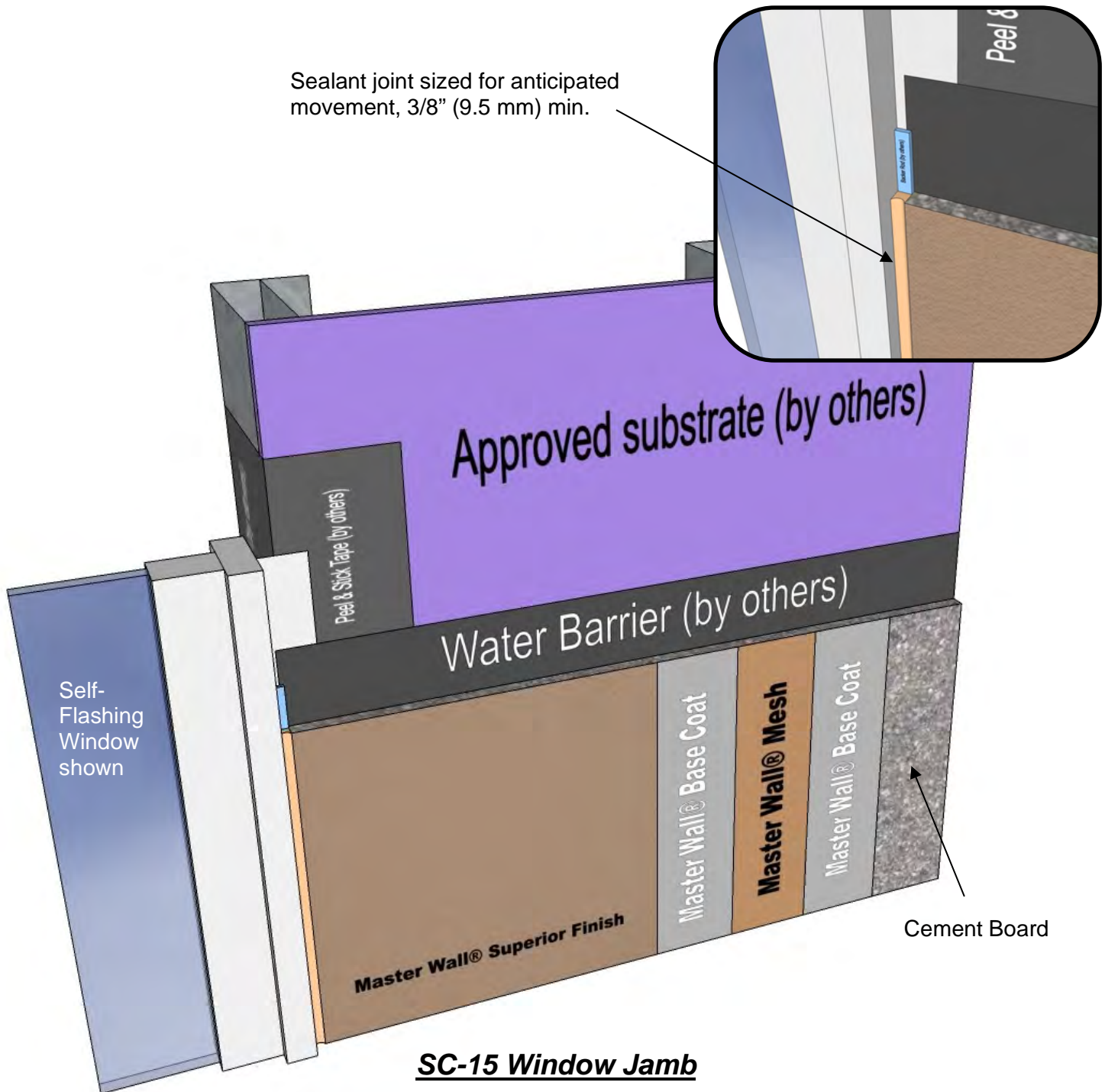
Sealant joint sized for anticipated movement, 3/8" (9.5 mm) min.



SC-14 Self-Flashing Window Head

These drawings relay the conceptual conditions of Master Wall® Systems and are not the construction drawings. Ultimately the design and detailing of an entire wall system is the responsibility of a professional. These details will guide the design professional in the use of Master Wall® Products. Master Wall disclaims design, warranty or construction intent or responsibility. Bold or Brand Name = Master Wall® Product. ©2020 Master Wall Inc.®

Stucco Cement Board Coating System Detail



These drawings relay the conceptual conditions of Master Wall® Systems and are not the construction drawings. Ultimately the design and detailing of an entire wall system is the responsibility of a professional. These details will guide the design professional in the use of Master Wall® Products. Master Wall disclaims design, warranty or construction intent or responsibility. Bold or Brand Name = Master Wall® Product. ©2020 Master Wall Inc.®

Stucco Cement Board Coating System Detail

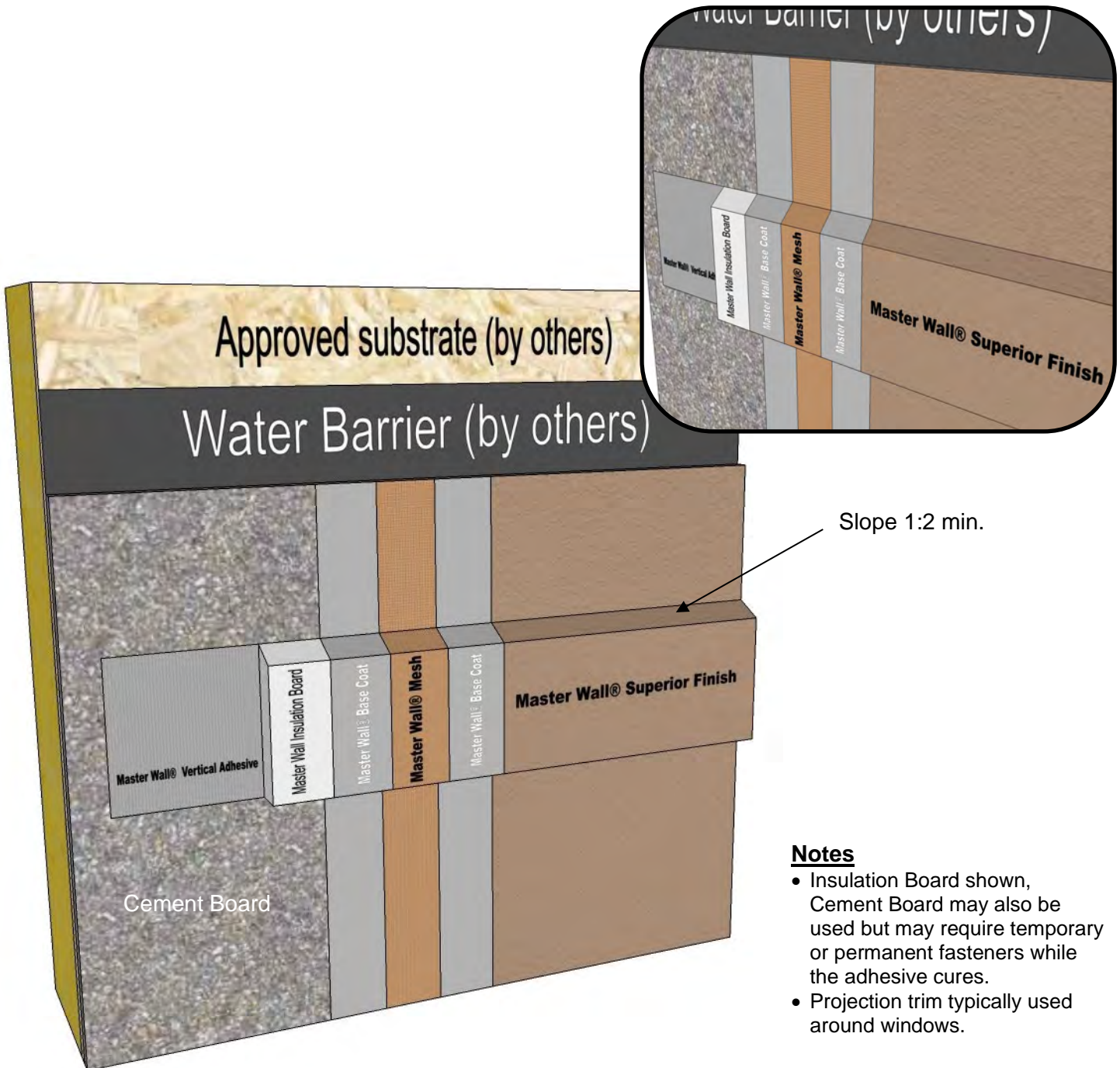


Sealant joint sized for anticipated movement, 3/8" (9.5 mm) min.

SC-16 Window Sill

These drawings relay the conceptual conditions of Master Wall® Systems and are not the construction drawings. Ultimately the design and detailing of an entire wall system is the responsibility of a professional. These details will guide the design professional in the use of Master Wall® Products. Master Wall disclaims design, warranty or construction intent or responsibility. Bold or Brand Name = Master Wall® Product. ©2020 Master Wall Inc.®

Stucco Cement Board Coating System Detail



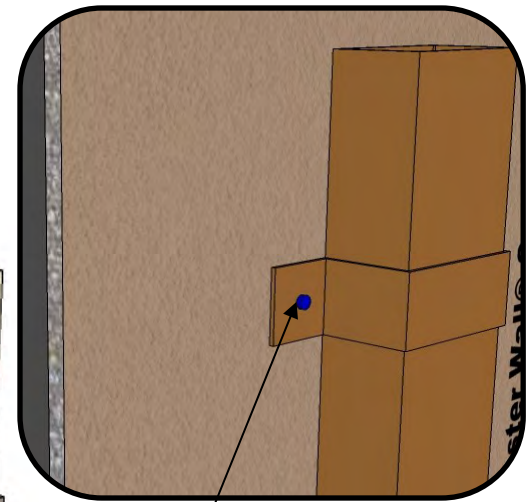
Notes

- Insulation Board shown, Cement Board may also be used but may require temporary or permanent fasteners while the adhesive cures.
- Projection trim typically used around windows.

SC-17 Aesthetic Projection

These drawings relay the conceptual conditions of Master Wall® Systems and are not the construction drawings. Ultimately the design and detailing of an entire wall system is the responsibility of a professional. These details will guide the design professional in the use of Master Wall® Products. Master Wall disclaims design, warranty or construction intent or responsibility. Bold or Brand Name = Master Wall® Product. ©2020 Master Wall Inc.®

Stucco Cement Board Coating System Detail



Fastener and Strap set in Sealant – Snug Tighten Only

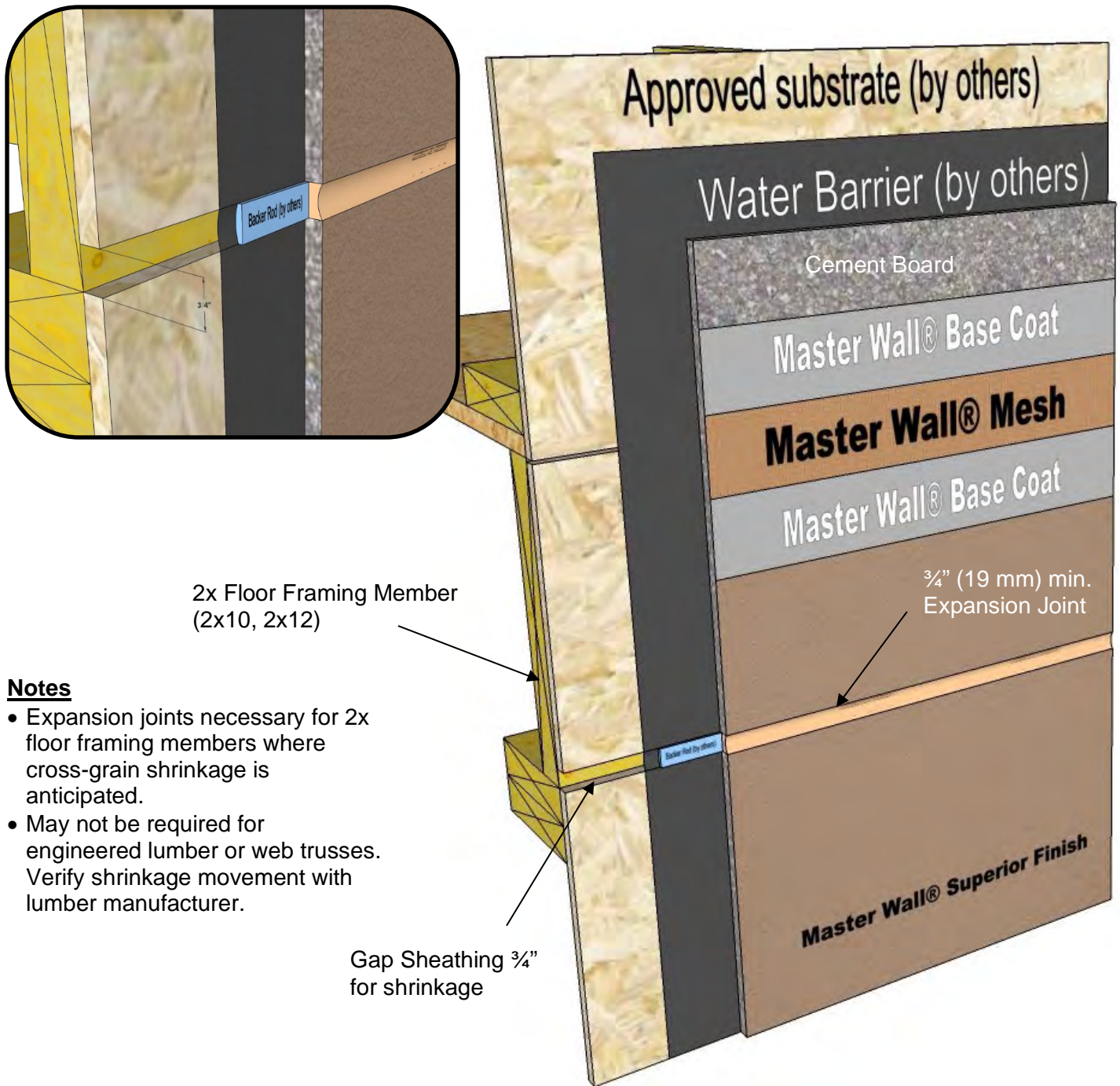
Notes

- Fasten gutter straps to structural support such as a bearing substrate or structural support (by others)

SC-18 Downspout Attachment

These drawings relay the conceptual conditions of Master Wall® Systems and are not the construction drawings. Ultimately the design and detailing of an entire wall system is the responsibility of a professional. These details will guide the design professional in the use of Master Wall® Products. Master Wall disclaims design, warranty or construction intent or responsibility. Bold or Brand Name = Master Wall® Product. ©2020 Master Wall Inc.®

Stucco Cement Board Coating System Detail



Notes

- Expansion joints necessary for 2x floor framing members where cross-grain shrinkage is anticipated.
- May not be required for engineered lumber or web trusses. Verify shrinkage movement with lumber manufacturer.

SC-19 Floor Line Expansion Joint

These drawings relay the conceptual conditions of Master Wall® Systems and are not the construction drawings. Ultimately the design and detailing of an entire wall system is the responsibility of a professional. These details will guide the design professional in the use of Master Wall® Products. Master Wall disclaims design, warranty or construction intent or responsibility. Bold or Brand Name = Master Wall® Product. ©2020 Master Wall Inc.®

Stucco Cement Board Coating System Detail



Sealant joint sized for anticipated movement, 3/8" (9.5 mm) min.

SC-20 Dissimilar Materials (Vertical)

These drawings relay the conceptual conditions of Master Wall® Systems and are not the construction drawings. Ultimately the design and detailing of an entire wall system is the responsibility of a professional. These details will guide the design professional in the use of Master Wall® Products. Master Wall disclaims design, warranty or construction intent or responsibility. Bold or Brand Name = Master Wall® Product. ©2020 Master Wall Inc.®

Stucco Cement Board Coating System Detail



Notes

- Shown with separate flashing means and water barriers.
- Continuous water barrier applications with a single drainage means could use a 3/8" (9.5 mm) min. sealant joint in lieu of flashing.

SC-21 Dissimilar Materials (Horizontal)

These drawings relay the conceptual conditions of Master Wall® Systems and are not the construction drawings. Ultimately the design and detailing of an entire wall system is the responsibility of a professional. These details will guide the design professional in the use of Master Wall® Products. Master Wall disclaims design, warranty or construction intent or responsibility. Bold or Brand Name = Master Wall® Product. ©2020 Master Wall Inc.®

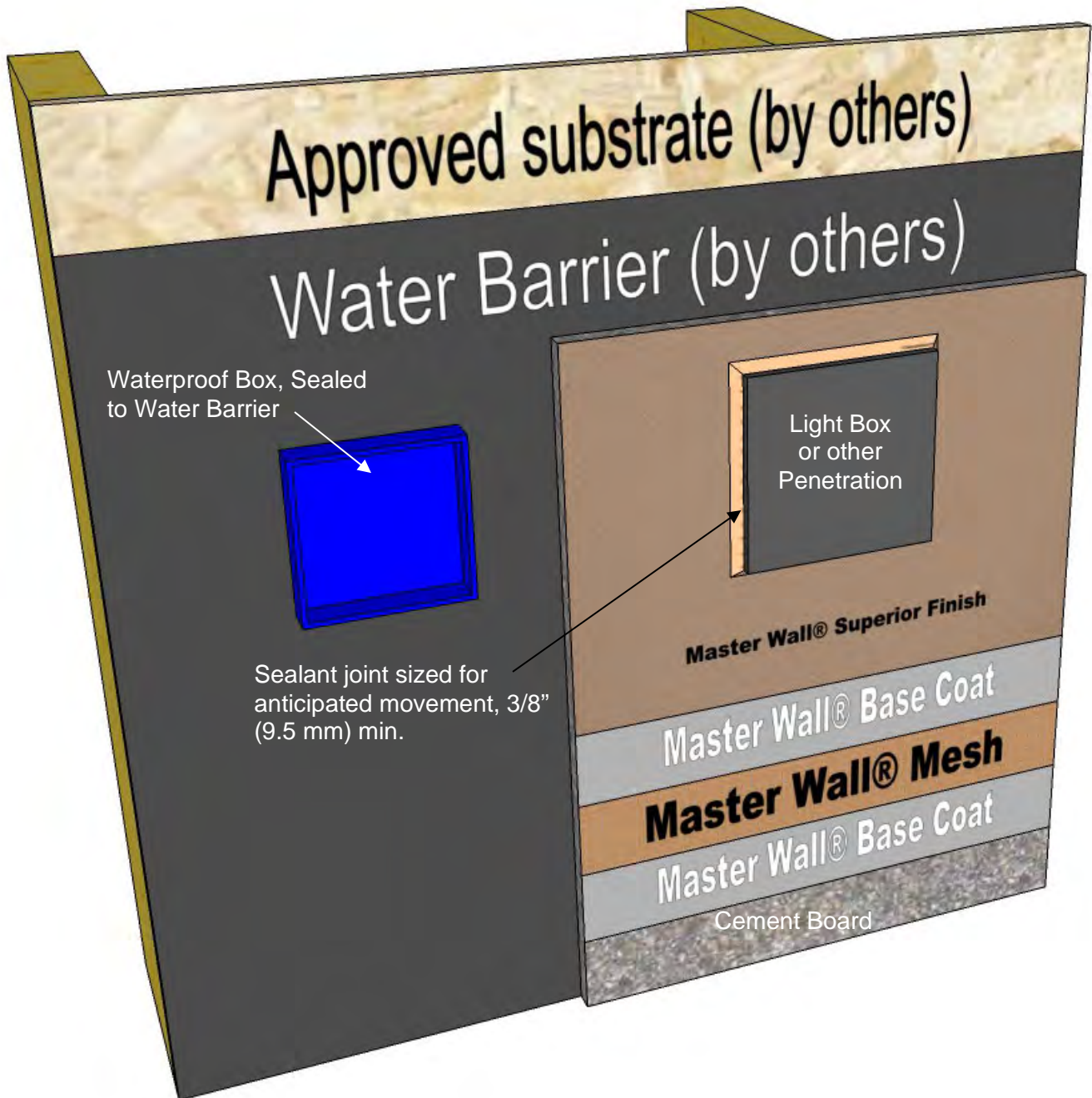
Stucco Cement Board Coating System Detail



SC-22 Pipe Penetration

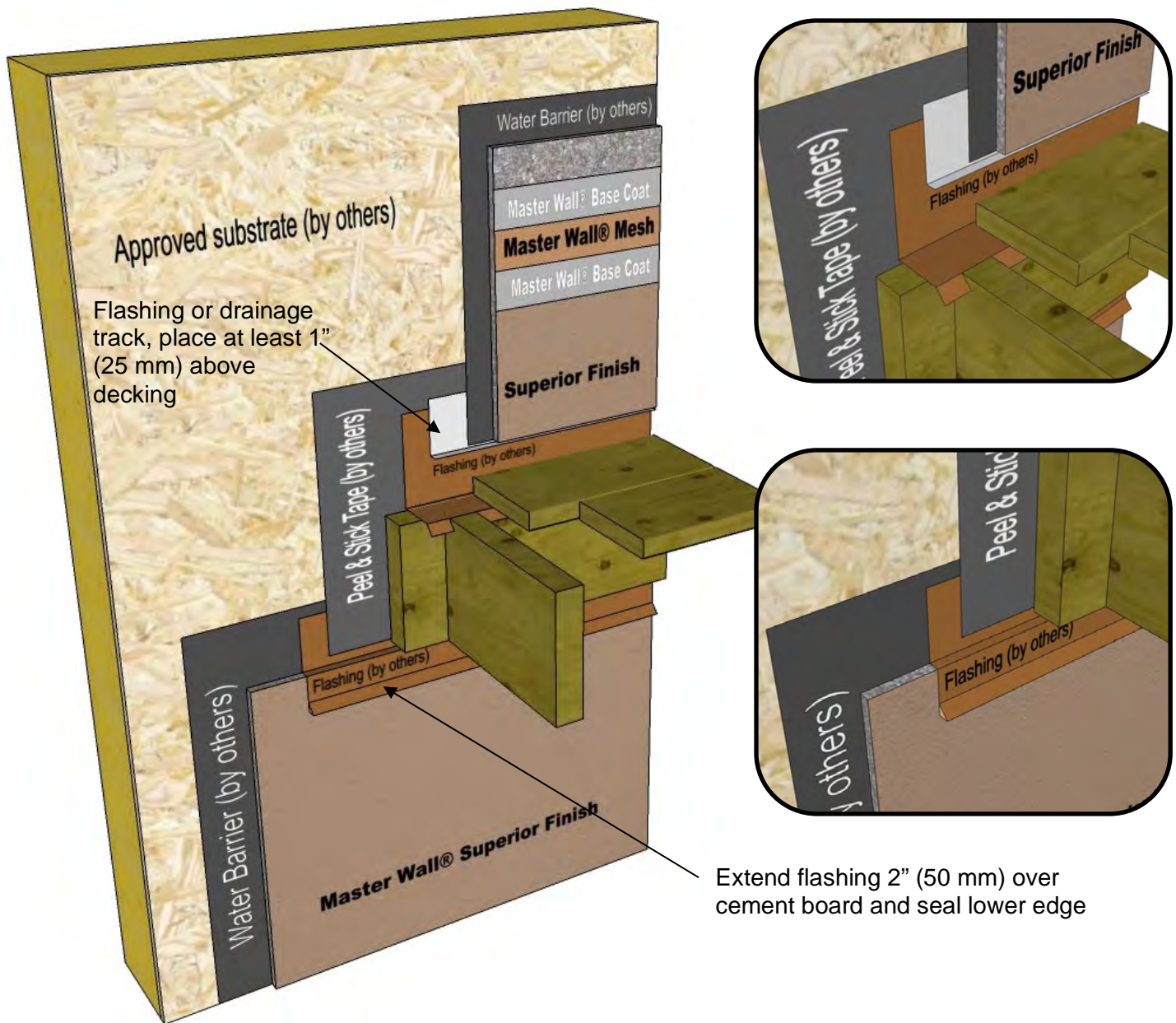
These drawings relay the conceptual conditions of Master Wall® Systems and are not the construction drawings. Ultimately the design and detailing of an entire wall system is the responsibility of a professional. These details will guide the design professional in the use of Master Wall® Products. Master Wall disclaims design, warranty or construction intent or responsibility. Bold or Brand Name = Master Wall® Product. ©2020 Master Wall Inc.®

Stucco Cement Board Coating System Detail



These drawings relay the conceptual conditions of Master Wall® Systems and are not the construction drawings. Ultimately the design and detailing of an entire wall system is the responsibility of a professional. These details will guide the design professional in the use of Master Wall® Products. Master Wall disclaims design, warranty or construction intent or responsibility. Bold or Brand Name = Master Wall® Product. ©2020 Master Wall Inc.®

Stucco Cement Board Coating System Detail



Extend flashing 2" (50 mm) over cement board and seal lower edge

SC-24 Deck Flashing

These drawings relay the conceptual conditions of Master Wall® Systems and are not the construction drawings. Ultimately the design and detailing of an entire wall system is the responsibility of a professional. These details will guide the design professional in the use of Master Wall® Products. Master Wall disclaims design, warranty or construction intent or responsibility. Bold or Brand Name = Master Wall® Product. ©2020 Master Wall Inc.®

Stucco Cement Board Coating System Detail



Sealant joint sized for anticipated movement, 3/8" (9.5 mm) min. Fillet-type joint with triangular backer rod shown

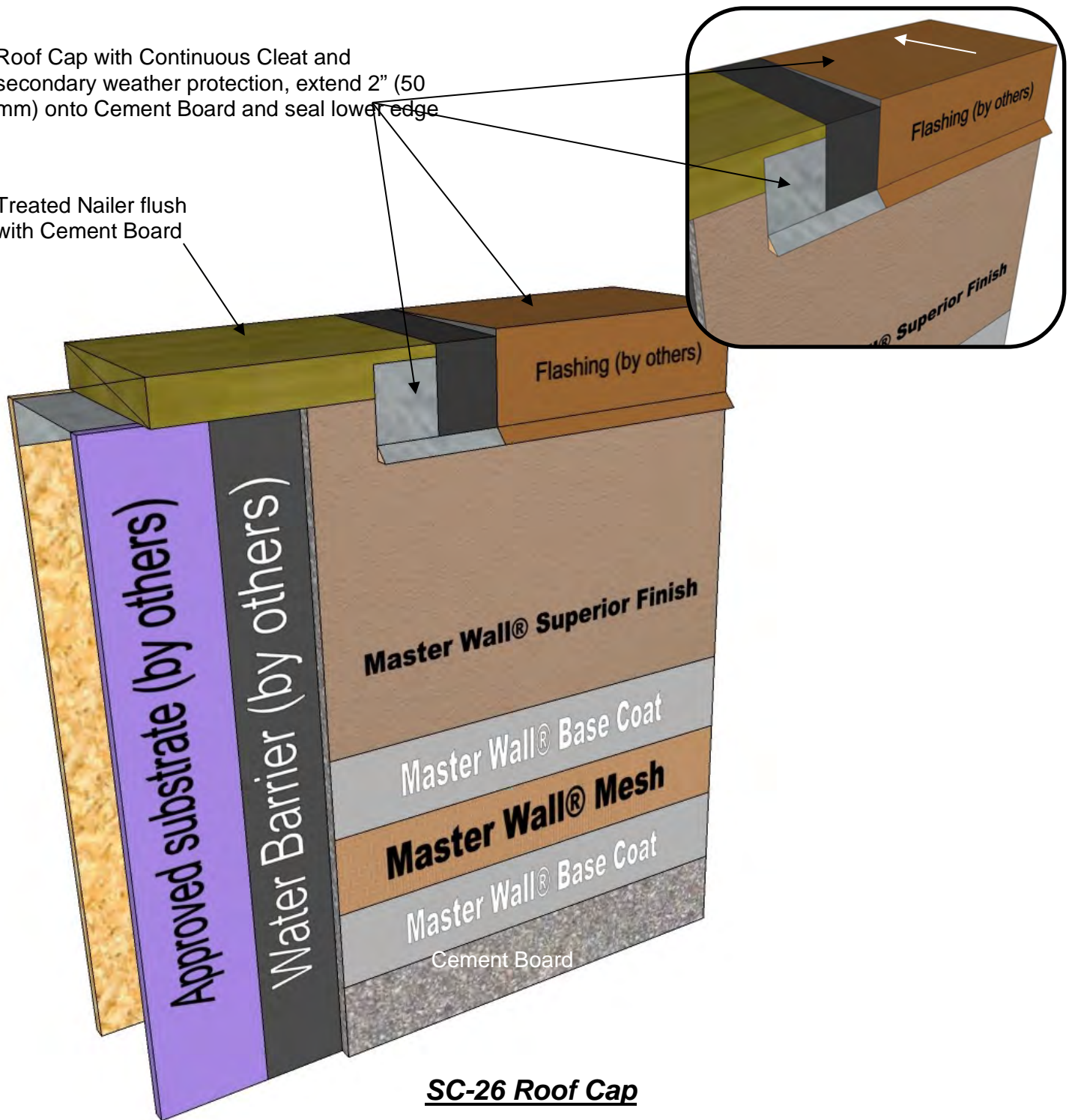
SC-25 Detail at Soffit

These drawings relay the conceptual conditions of Master Wall® Systems and are not the construction drawings. Ultimately the design and detailing of an entire wall system is the responsibility of a professional. These details will guide the design professional in the use of Master Wall® Products. Master Wall disclaims design, warranty or construction intent or responsibility. Bold or Brand Name = Master Wall® Product. ©2020 Master Wall Inc.®

Stucco Cement Board Coating System Detail

Roof Cap with Continuous Cleat and secondary weather protection, extend 2" (50 mm) onto Cement Board and seal lower edge

Treated Nailer flush with Cement Board



SC-26 Roof Cap

These drawings relay the conceptual conditions of Master Wall® Systems and are not the construction drawings. Ultimately the design and detailing of an entire wall system is the responsibility of a professional. These details will guide the design professional in the use of Master Wall® Products. Master Wall disclaims design, warranty or construction intent or responsibility. Bold or Brand Name = Master Wall® Product. ©2020 Master Wall Inc.®

