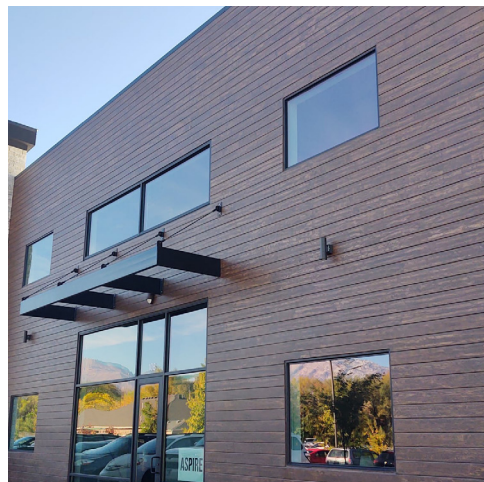
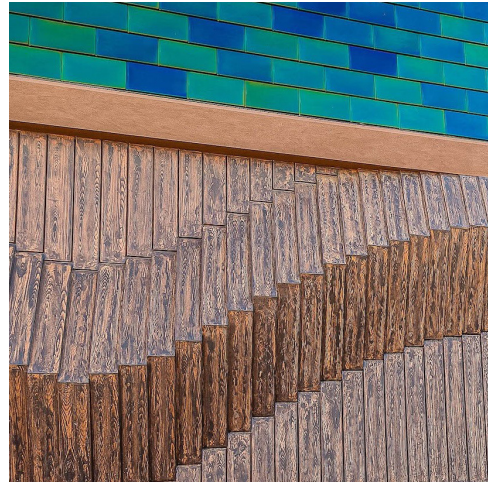


Wood Grain Color Selector



We finish strong.

Corporate Office

6975 Flat Rock Road
Midland, GA 31820

Georgia Manufacturing

2265 Lithonia Industrial Boulevard
Stonecrest, GA 30058

Utah Manufacturing

810 West Utah Avenue #1
Payson, UT 84651

Texas Manufacturing

3943 FM 362
Brookshire, TX 77423

Northeast Hub

1329 N. Reading Rd.
Stevens, PA 17578-9491

Technical Service

tech@masterwall.com

800-755-0825

customerservice@masterwall.com
masterwall.com

Finish Properties

Meets or Exceeds:

- ASTM E84 Surface Burning
- ASTM C67 (AC-24)(EIMA 101.01) Freeze/Thaw
- ASTMD2247 Humidity/Water Resistance
- ASTM D3273 Mold/Mildew
- ASTM D968 Abrasion
- ASTM B117 Salt Spray
- ASTM G53 UV Weathering
- ASTM G23 (G153) UV Weathering
- Excel Mildew and Silicone Coat Additives Available

Information contained in this product data sheet conforms to the standard detail recommendations and specifications for the installation of Master Wall Inc. products and is presented in good faith. Master Wall Inc. assumes no liability, expressed or implied as to the architecture, engineering, or workmanship of any project. This information may be concurrent with, or superseded by other applicable documents, such as specifications and details. Contact Master Wall Inc. for the most current product information.



800-755-0825 | masterwall.com

M Master Wall Inc.
Building a Culture of Excellence



Wood Grain Color Selector

All colors shown here are intended to show approximate color of the finish. Do not use this color chart as the final selection as colors are affected by age, texture, lighting conditions, heat and application processes. Color swatches will vary in color and finish to the actual product due to jobsite conditions and methods of applications.



Ash



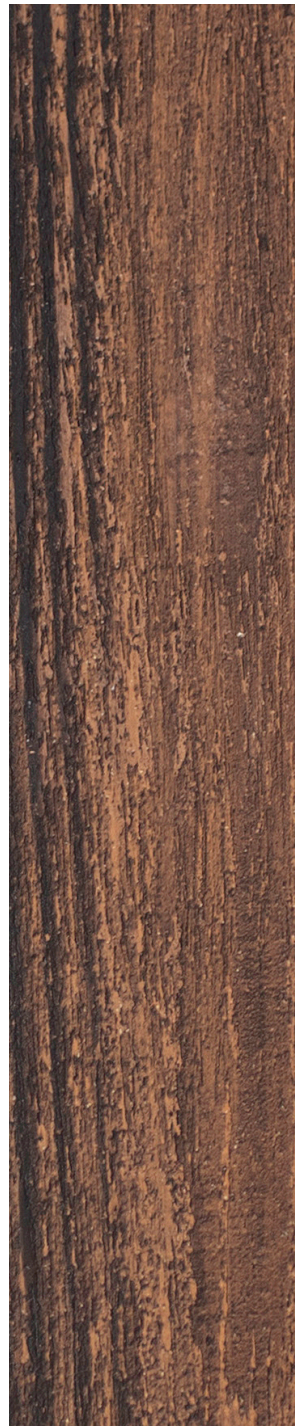
Bark



Cedar



Cherry



Espresso



Light Tobacco



Pine



Redwood



Walnut



White Pine

Actual color selection should be made from a 1'x1' sample of each color, texture and finish made by the applicator who is actually completing the project. Custom match brick samples are available upon request. Master Wall manufactures 100% pure acrylic finishes, "The quality is in the pail."