



Master Wall Inc.®
Building a Culture of Excellence

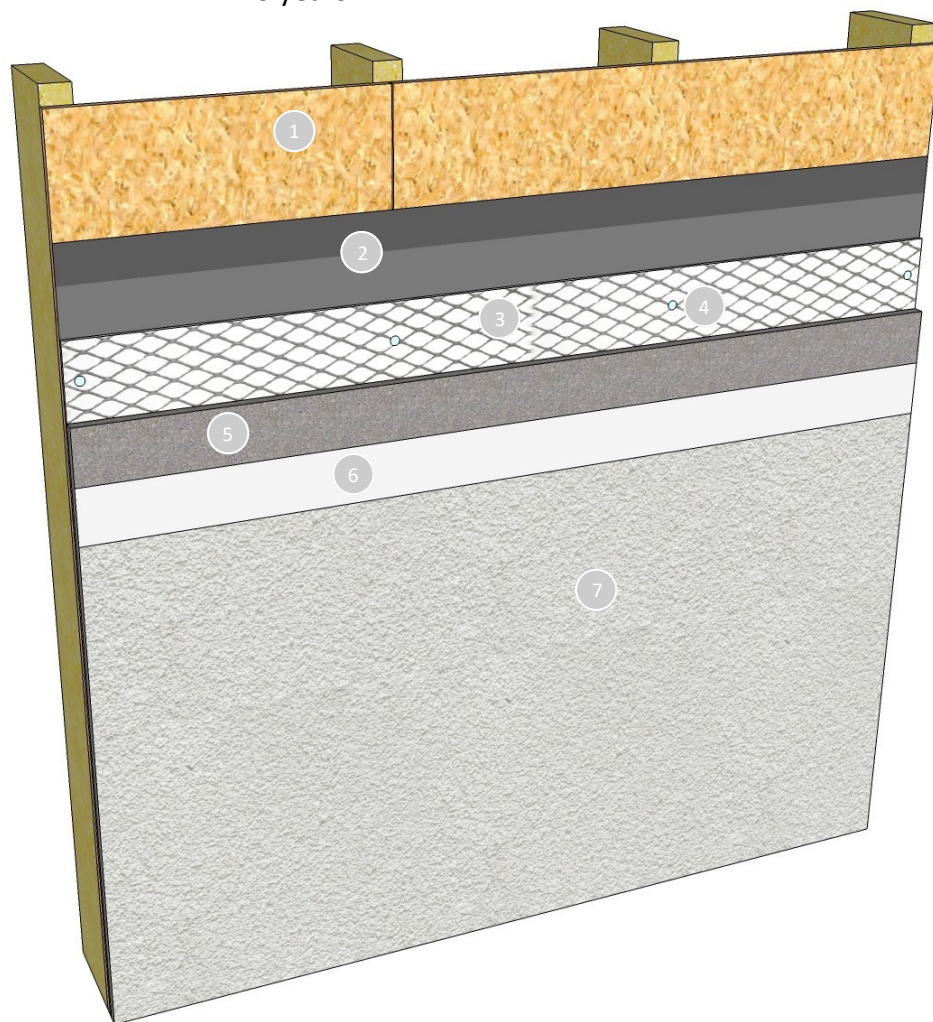
FINISHES OVER STUCCO

Superior Finishes applied over a traditional stucco base make projects look better. Our finishes offer better color and texture consistency compared to traditional cement textures. We suggest optional Primecoat primer for even better color consistency.

To bridge minor hairline cracks in stucco specify Superior Elastomeric Plus Finish. The textured finish is designed to stretch with the minor hairline cracking common in stucco.

Features & Benefits

- Excellent color consistency
- 100% Acrylic Polymers for durability
- Superior Elastomeric Plus option - bridges hairline cracks common in stucco
- Vapor Permeable - resists blistering and allows trapped water vapors to pass
- Finish Limited Material Warranties
 - Superior Finishes, Superior Elastomeric Plus, Specialty Finishes - 5 years
 - Superior Finishes or Specialty Finishes with Primecoat Primer - 7 years
 - Superior Elastomeric Plus with Primecoat Primer - 10 years



1. Framing & Substrate (by others)
2. Water Barriers (by others)
3. Stucco Reinforcement
4. Mechanical Attachment
5. Traditional Stucco (ASTM C926) or One Coat Stucco (OCS)
6. Master Wall® Primecoat Primer (optional)
7. Master Wall® Superior, Superior Elastomeric Plus or Specialty Finish

Short Form Specification

1.0 General

This is a short form specification. Refer to product data sheets for additional information.

1.1 System Description

Master Wall Inc.® Finishes over Stucco consists of an optional primer and a textured finish.

1.2 Design Requirements:

- A. Reference architectural drawings for specific detail requirements.
- B. Slope all surfaces a minimum of 1:2 (6" in 12") to shed water, maximum 12" (305 mm) wide.
- C. Maximum deflection of substrates shall not exceed L/360.
- D. Acceptable substrates include Portland cement plaster (stucco). Contact Master Wall® for other approved substrates.

1.3 Quality Assurance

- A. The coatings shall be tested for: Accelerated weathering, mildew resistance, salt spray resistance and structural performance.
- B. The coatings shall have been tested for fire performance in accordance with ASTM E84.

1.4 Job Conditions

- A. Store all materials protected from weather and direct sunlight at temperatures above 40°F (5°C).
- B. The ambient and wall temperature shall be a minimum of 40°F (5°C) and shall remain so for at least 24 hours after installation.

2.0 Products

All components of the Finish over Stucco shall be manufactured by Master Wall® and supplied by an authorized distributor.

- A. Superior Finish: 100% pure acrylic formulation with integral color and texture. Perfect Swirl 2.0, Fine Sand 1.0, Medium Sand 1.5, Versatex 0.5 textures.
- B. Superior Elastomeric Plus Finish: 100% pure elastomeric acrylic formulation with integral color and texture. Perfect Swirl 2.0, Fine Sand 1.0, Medium Sand 1.5, Versatex 0.5 textures.
- C. Specialty Finishes: Specialty finish blends of natural and man-made decorative specialty finishes and accents.
- D. Master Wall Coatings (optional):
 1. Primecoat/Sanded Primecoat: A water-based primer.
 2. SuperiorCote™: A water-based architectural finish coating.
 3. Elasto-flex: A water-based acrylic elastomeric finish coating.

3.0 Installation

- A. Inspect the substrate to ensure that it is free of all foreign materials that would affect the adhesion of the Master Wall® Finishes over Stucco.
- B. Apply the products in strict accordance with Master Wall® product data sheets, architectural drawings and architectural specifications.

Information contained in this product data sheet conforms to the standard detail recommendations and specifications for the installation of Master Wall Inc.® products and is presented in good faith. Master Wall Inc.® assumes no liability, expressed or implied as to the architecture, engineering, or workmanship of any project. This information may be concurrent with, or superseded by other applicable documents, such as specifications and details. Contact Master Wall Inc.® for the most current product information. ©2025 Master Wall Inc.®

