



Master Wall Inc.®
Building a Culture of Excellence

**LiMa C230 LIGHT MASONRY
WALL SYSTEM**

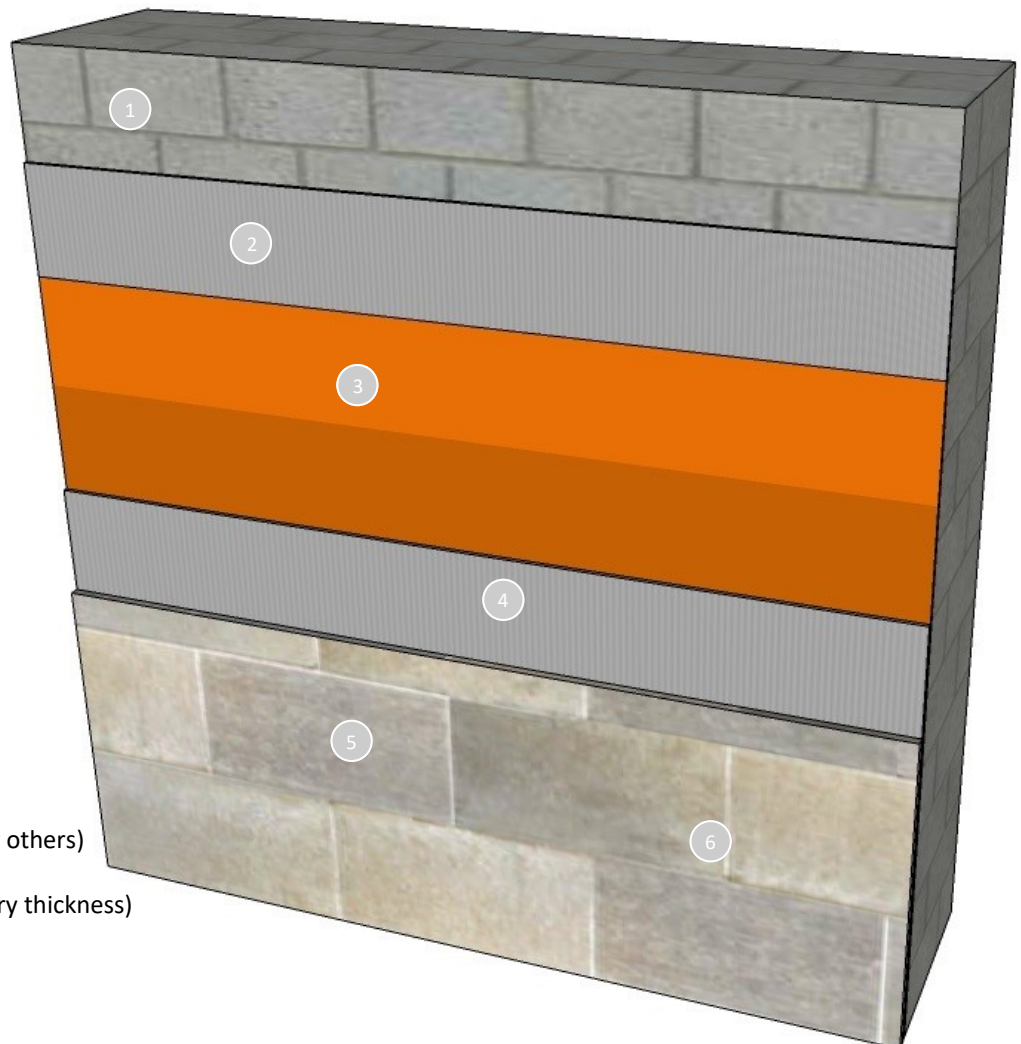
The LiMa C230 thin brick and stone system is a durable lightweight wall cladding with excellent water holdout over concrete or masonry surfaces where leveling is needed to provide a smooth surface for water barrier application.

It features our Rollershield air and water barrier product that is either rolled, sprayed or troweled in place. With any method, the product offers excellent water holdout capabilities compared to a sheet good and has class-leading air sealing capability.

The UltraBond adhesive has class leading slump resistance and cures quickly to quickly get your wall system in service.

Features & Benefits

- 30-year limited warranty
- Extremely low air infiltration properties
- Rollershield options
 - Rollershield-RS, vapor open roll grade
 - Rollershield-TG, vapor open trowel grade
 - Rollershield-VB vapor closed roll grade
- Quality products with great durability



1. Concrete or Masonry surface (by others)
2. UltraBond as leveler
3. Rollershield (2 coats or 22 mils dry thickness)
4. UltraBond Adhesive
5. Thin Brick or Stone (by others)
6. Mortar (by others)

Short Form Specification

1.0 General

This is a specification for the application of a Master Wall® Light Masonry (LiMa) application over cured concrete and masonry surfaces.

1.1 System Description

The Master Wall® LiMa C230 is a light masonry stone or thin brick application over cured concrete and masonry surfaces. It uses a leveling coat of UltraBond with two coats of SuperiorShield Rollershield as the air and water barrier over the surface with Ultra Bond as the adhesive for ICC-ES ACS1 compliant stone or thin brick.

1.2 Design Requirements:

- A. Reference Master Wall® suggested details and architectural drawings for specific detail requirements.
- B. Slope all surfaces a minimum of 1:2 (6" in 12") to shed water, maximum 12" (305 mm) wide.
- C. Maximum deflection of substrates shall not exceed L/360.
- D. Typical acceptable substrates include cured and unpainted surfaces of concrete, masonry and brick. Where possible joints of brick and masonry should be struck flush.
- E. Expansion joints are required in the cladding at building expansion or control joints and other areas where significant movement occurs.

1.3 Quality Assurance

- A. The Rollershield air/water barrier shall be recognized in IAPMO ER-0384.
- B. SuperiorShield product bulletins, application instructions and details.

1.4 Job Conditions

- A. Store all materials protected from weather and direct sunlight at temperatures above 40°F (5°C).
- B. The ambient and wall temperature shall be a minimum of 40°F (5°C) and shall remain so for at least 24 hours after installation.

1.5 Warranty

- A. Application shall include a 30-year limited warranty, please reference the LiMa Warranty Program Limited Warranty.

2.0 Products

All components of the LiMa application shall be manufactured by Master Wall® and supplied by an authorized distributor.

2.1 SuperiorShield Water Barrier & Flashing Tapes:

- A. SuperiorShield Rollershield RS: A 100% pure acrylic-based roll-applied weather-resistive barrier.
- B. SuperiorShield Rollershield TG: A 100% pure acrylic-based trowel grade water-resistive barrier.
- C. SuperiorShield Rollershield VB: Acrylic-based vapor barrier water resistive barrier.
- D. SuperiorShield Flashing Tape: A lightweight nonwoven joint treatment material.
- E. SuperiorShield Mesh Tape: A lightweight joint treatment material.
- F. SuperiorFlash: A single-component fluid applied flashing.

2.2 Master Wall® Stone/Thin Brick Adhesive: UltraBond, A ready to use dry base adhesive that is field mixed with water.

3.0 Installation

- 3.1 Inspect the substrate to ensure that it is free of all foreign materials that would affect later work.
- 3.2 Apply a leveling coat of UltraBond to the surface a minimum of 3/32" (3.3 mm) thick, trowel smooth and allow to cure according to data sheet requirements.
- 3.3 Apply the Rollershield products in accordance with the product data sheets, minimum two coats or a single coating with a dry mil thickness of at least 22 mils. Use Flashing Tape, Mesh Tape or SuperiorFlash where needed to bridge cracks.
- 3.4 Adhere ICC-ES ACS1-compliant stone or thin brick using UltraBond, mixed following data sheet instructions. Allow to cure before proceeding with mortar application.
- 3.5 Mortar with approved Brick Mortar, mixed with water following data sheet instructions. Place in joints using a grout bag or similar device and rake/tool when thumb print hard.
- 3.6 Allow the wall system to cure and protect from weather for at least 72 hours before placing in service.

Information contained in this product data sheet conforms to the standard detail recommendations and specifications for the installation of Master Wall Inc.® products and is presented in good faith. Master Wall Inc.® assumes no liability, expressed or implied as to the architecture, engineering, or workmanship of any project. This information may be concurrent with, or superseded by other applicable documents, such as specifications and details. Contact Master Wall Inc.® for the most current product information. ©2025 Master Wall Inc.®

