



**Master Wall Inc.**  
Building a Culture of Excellence

## LiMa i610CB LIGHT MASONRY WALL SYSTEM

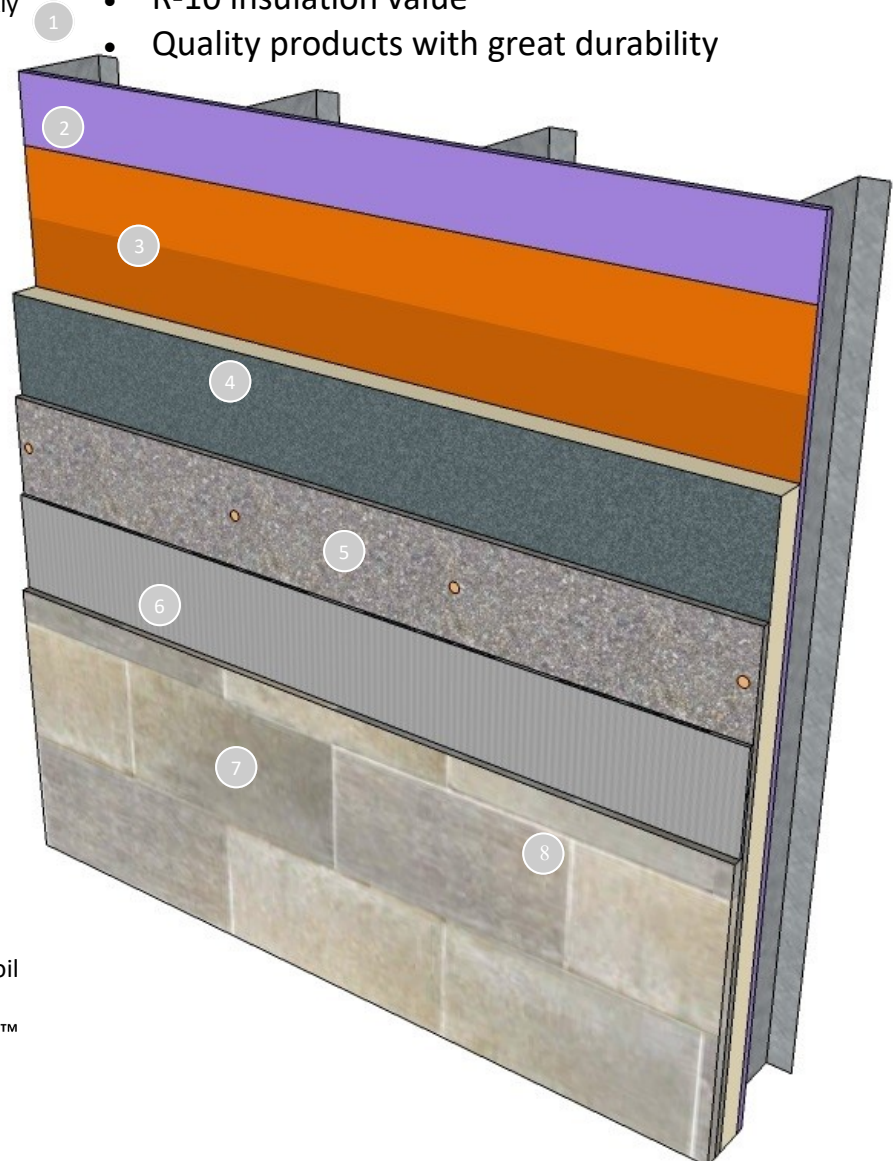
The LiMa i610CB thin brick and stone system is an insulated cement board featuring Hunter Polyisocyanurate Insulation boards and National Gypsum PermaBase® Cement Board.

It features our Rollershield air and water barrier product that is either rolled, sprayed or troweled in place. With any method, the product offers excellent water holdout capabilities compared to a sheet good and has class-leading air sealing capability.

The UltraBond adhesive has class leading slump resistance and cures quickly to quickly get your wall system in service.

### Features & Benefits

- 10-year limited warranty
- Extremely low air infiltration properties
- Rollershield seals around nail holes
- Rollershield options
  - Rollershield-RS, vapor open roll grade
  - Rollershield-TG, vapor open trowel grade
  - Rollershield-VB vapor closed roll grade
- Simplified construction
- R-10 insulation value
- Quality products with great durability



1. Wood or Metal Framing
2. Approved Substrate
3. Rollershield  
(2 coats or 22 mils dry thickness)
4. Hunter Xci-CG or CG (Class A) or Xci-Foil  
(Class A)
5. PermaBase® CI Insulated Cement Board™  
with recommended fasteners
6. UltraBond Adhesive
7. Thin Brick or Stone (by others)
8. Mortar (by others)

## Short Form Specification

### 1.0 General

This is a specification for the application of a Master Wall® Light Masonry (LiMa) application over wood or metal framing and sheathing with polyisocyanurate insulation and cement board.

#### 1.1 System Description

The Master Wall® LiMa i610CB is a light masonry stone or thin brick application over polyisocyanurate insulation and cement board. It uses two coats of SuperiorShield Rollershield as the air and water barrier under the cement board with UltraBond as the adhesive for ICC-ES AC51 compliant stone or thin brick with CIFS® Brick Mortar.

#### 1.2 Design Requirements:

- A. Reference Master Wall® suggested details and architectural drawings for specific detail requirements.
- B. Slope all surfaces a minimum of 1:2 (6" in 12") to shed water, maximum 12" (305 mm) wide.
- C. Maximum deflection of substrates shall not exceed L/360.
- D. Typical acceptable substrates include CDX exterior grade plywood, Exposure 1 Oriented Strand Board (OSB), ASTM C1177 exterior gypsum sheathing, concrete, masonry or other approved substrates noted on the Rollershield-RS data sheet.
- E. Expansion joints are required in the cladding at building expansion joints, panel joints, floor lines in wood framed construction, and other areas where significant movement occurs.

#### 1.3 Quality Assurance

- A. The Rollershield air/water barrier shall be recognized in IAPMO ER-0384.
- B. SuperiorShield product bulletins, application instructions and details.
- C. National Gypsum PermaBase® installation instructions and code report.

#### 1.4 Job Conditions

- A. Store all materials protected from weather and direct sunlight at temperatures above 40°F (5°C).
- B. The ambient and wall temperature shall be a minimum of 40°F (5°C) and shall remain so for at least 24 hours after installation.

#### 1.5 Warranty

- A. Application shall include a 10-year limited warranty, please reference the LiMa Warranty Program Limited Warranty.

### 2.0 Products

All components of the LiMa application shall be manufactured by Master Wall® and supplied by an authorized distributor.

#### 2.1 SuperiorShield Water Barrier & Flashing Tapes:

- A. SuperiorShield Rollershield RS: A 100% pure acrylic-based roll-applied weather-resistive barrier.
- B. SuperiorShield Rollershield TG: A 100% pure acrylic-based trowel grade water-resistive barrier.
- C. SuperiorShield Rollershield VB: Acrylic-based vapor barrier water resistive barrier.
- D. SuperiorShield Flashing Tape: A lightweight nonwoven joint treatment material.
- E. SuperiorShield Mesh Tape: A lightweight joint treatment material.
- F. SuperiorFlash: A single-component fluid applied flashing.

#### 2.2 Polyisocyanurate Insulation:

- A. Hunter Xci-CG or CG (Class A), maximum 1" (25 mm) thick.
- B. Hunter Xci-Foil (Class A), maximum 1" (25 mm) thick.

#### 2.3 Cement Board: National Gypsum PermaBase® in 1/2" (12.7 mm) or 5/8" (15.9 mm) thickness along with recommended fasteners.

#### 2.4 Master Wall® Stone/Thin Brick Adhesive: UltraBond, A ready to use dry base adhesive that is field mixed with water.

### 3.0 Installation

- 3.1 Inspect the substrate to ensure that it is free of all foreign materials that would affect the adhesion of the Rollershield air and water barrier.
- 3.2 Apply the Rollershield products in accordance with the product data sheets, minimum two coats or a single coating with a dry mil thickness of at least 22 mils.
- 3.3 Tack-attach insulation board panels to the framing using Wind-Lock™ climate treated fasteners with Lath Lock plates or approved equal. Size fasteners for insulation and sheathing thickness and of type appropriate for the material being fastened to.
- 3.4 Attach cement board to framing members using approved fasteners at a minimum of 8" (20 cm) centers.
- 3.5 Adhere ICC-ES AC51-compliant stone or thin brick using UltraBond, mixed following data sheet instructions. Allow to cure before proceeding with mortar application.
- 3.6 Mortar with recommended mortar, mixed with water following data sheet instructions. Place in joints using a grout bag or similar device and rake/tool when thumb print hard.
- 3.7 Allow the wall system to cure and protect from weather for at least 72 hours before placing in service.

Information contained in this product data sheet conforms to the standard detail recommendations and specifications for the installation of Master Wall Inc.® products and is presented in good faith. Master Wall Inc.® assumes no liability, expressed or implied as to the architecture, engineering, or workmanship of any project. This information may be concurrent with, or superseded by other applicable documents, such as specifications and details. Contact Master Wall Inc.® for the most current product information. ©2025 Master Wall Inc.®

