



**Master Wall Inc.**  
Building a Culture of Excellence

## LiMa M105 LIGHT MASONRY WALL SYSTEM

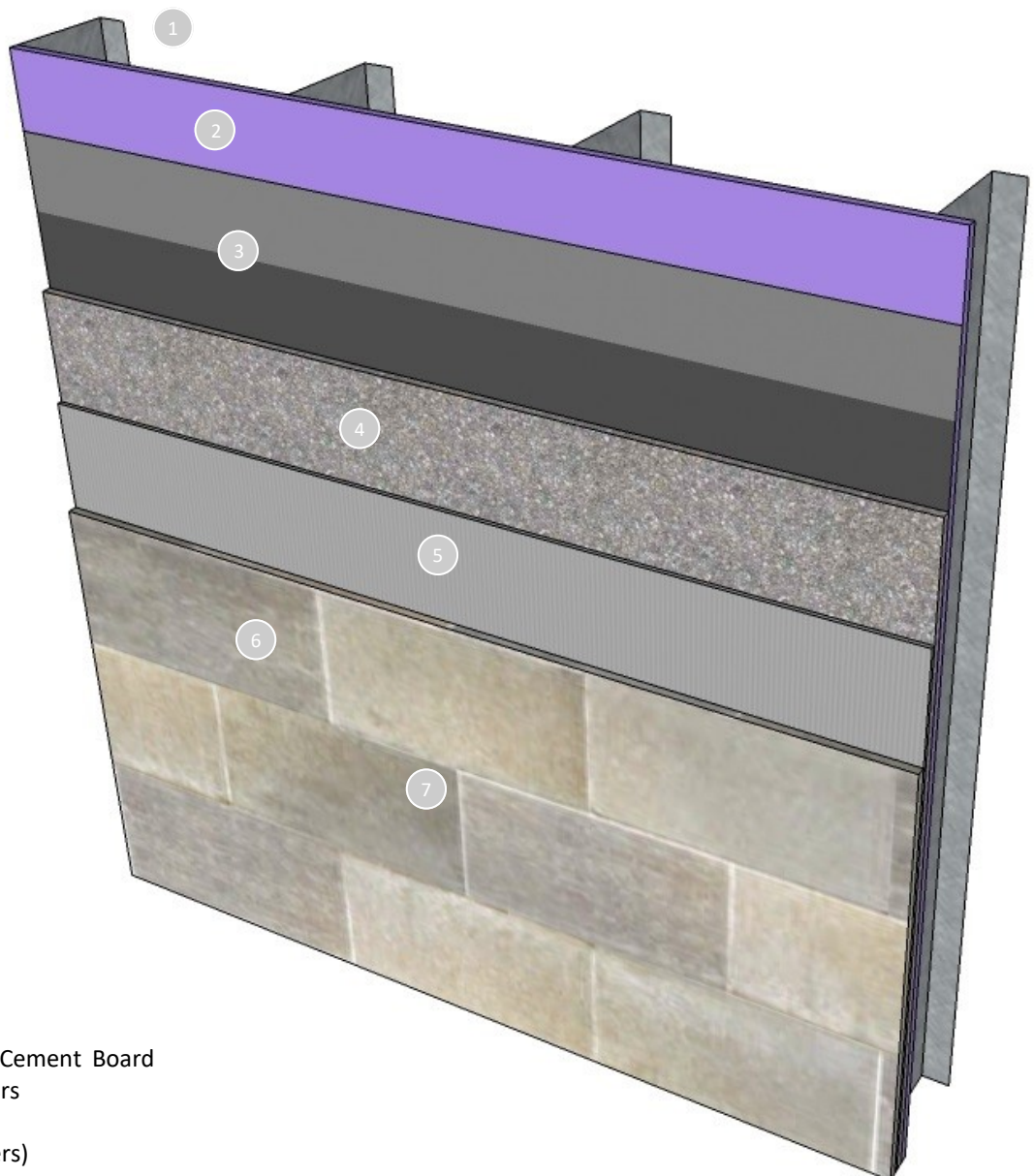
The LiMa M105 thin brick and stone system is an economical, lightweight wall cladding with simplified construction.

It features sheet type water barriers and cement board substrate for an economical installation.

The UltraBond adhesive has class leading slump resistance and cures quickly to quickly get your wall system in service.

### Features & Benefits

- 5-year limited warranty
- UltraBond adheres strongly to cement board with high adhesion and low slump properties
- Quality products with great durability



1. Wood or Metal Framing
2. Approved sheathing
3. Water Barriers
4. 1/2" or 5/8" PermaBase® Cement Board with recommended fasteners
5. UltraBond Adhesive
6. Thin Brick or Stone (by others)
7. Mortar (by others)

## Short Form Specification

### 1.0 General

This is a specification for the application of a Master Wall<sup>®</sup> Light Masonry (LiMa) application over wood or metal framing and ASTM C1177 exterior gypsum sheathing.

#### 1.1 System Description

The Master Wall<sup>®</sup> LiMa M105 is a light masonry stone or thin brick application over cement board. It is applied over two weather-resistive barriers under the cement board with UltraBond as the adhesive for ICC-ES AC51 compliant stone or thin brick with CIFS<sup>®</sup> Brick Mortar.

#### 1.2 Design Requirements:

- A. Reference Master Wall<sup>®</sup> suggested details and architectural drawings for specific detail requirements.
- B. Slope all surfaces a minimum of 1:2 (6" in 12") to shed water, maximum 12" (305 mm) wide.
- C. Maximum deflection of substrates shall not exceed L/360.
- D. Typical acceptable substrates include ASTM C1177 exterior gypsum sheathing or approved alternates.
- E. Expansion joints are required in the cladding at building expansion joints, panel joints, floor lines in wood framed construction, and other areas where significant movement occurs.

#### 1.3 Quality Assurance

- A. The weather resistive barrier shall be as recognized in the applicable building code or recognized alternative.
- B. National Gypsum PermaBase installation instructions and code report.

#### 1.4 Job Conditions

- A. Store all materials protected from weather and direct sunlight at temperatures above 40°F (5°C).
- B. The ambient and wall temperature shall be a minimum of 40°F (5°C) and shall remain so for at least 24 hours after installation.

#### 1.5 Warranty

- A. Application shall include a 5-year limited warranty, please reference the LiMa Warranty Program Limited Warranty.

### 2.0 Products

All components of the LiMa application shall be manufactured by Master Wall<sup>®</sup> and supplied by an authorized distributor.

- 2.1 Cement Board: National Gypsum PermaBase in 1/2" (12.7 mm) or 5/8" (15.9 mm) thickness or PermaBase CI along with recommended fasteners.
- 2.2 Master Wall<sup>®</sup> Stone/Thin Brick Adhesive: UltraBond, A ready to use dry base adhesive that is field mixed with water.

### 3.0 Installation

- 3.1 Inspect the substrate to ensure that it is free of all foreign materials that would affect application of the weather resistive barrier.
- 3.2 Install weather resistive barrier in accordance with building code requirements. Two layers or approved equivalent products.
- 3.3 Attach cement board to framing members using approved fasteners at a minimum of 8" (20 cm) centers.
- 3.4 Adhere ICC-ES AC51-compliant stone or thin brick using UltraBond, mixed following data sheet instructions. Allow to cure before proceeding with mortar application.
- 3.5 Mortar with recommended mortar, mixed with water following data sheet instructions. Place in joints using a grout bag or similar device and rake/tool when thumb print hard.
- 3.6 Allow the wall system to cure and protect from weather for at least 72 hours before placing in service.

Information contained in this product data sheet conforms to the standard detail recommendations and specifications for the installation of Master Wall Inc.<sup>®</sup> products and is presented in good faith. Master Wall Inc.<sup>®</sup> assumes no liability, expressed or implied as to the architecture, engineering, or workmanship of any project. This information may be concurrent with, or superseded by other applicable documents, such as specifications and details. Contact Master Wall Inc.<sup>®</sup> for the most current product information. ©2025 Master Wall Inc.<sup>®</sup>

