



**Master Wall Inc.®**  
Building a Culture of Excellence

## LiMa W210 LIGHT MASONRY WALL SYSTEM

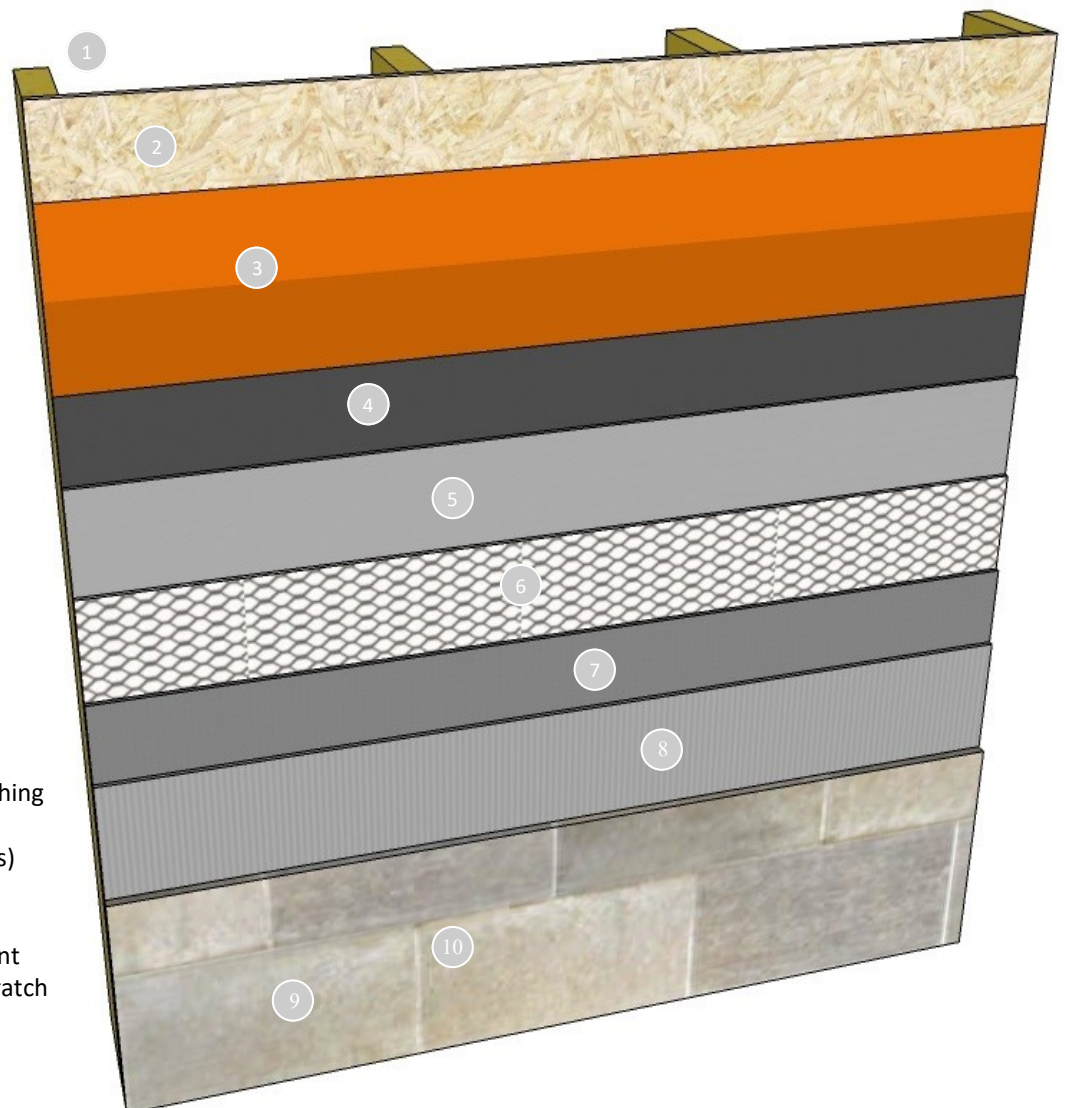
The LiMa W210 thin brick and stone system is an economical, lightweight wall cladding with excellent water holdout.

It features our Rollershield air and water barrier product that is either rolled, sprayed or troweled in place. With any method, the product offers excellent water holdout capabilities compared to a sheet good and has class-leading air sealing capability.

The UltraBond adhesive has class leading slump resistance and cures quickly to quickly get your wall system in service.

### Features & Benefits

- 10-year limited warranty
- Extremely low air infiltration properties
- Rollershield seals around nail holes
- Rollershield options
  - Rollershield-RS, vapor open roll grade
  - Rollershield-TG, vapor open trowel grade
  - Rollershield-VB vapor closed roll grade
- Engineered, fibered Cemplaster Fiberstucco as the base with lath reinforcement



1. Wood or Metal Framing
2. Wood or other approved sheathing
3. Rollershield  
(2 coats or 22 mils dry thickness)
4. Asphalt slip sheet
5. Keene Drainage Mat 020-1
6. 2.5#/sy metal lath reinforcement
7. Cemplaster Fiberstucco scratch coat
8. UltraBond Adhesive
9. Thin Brick or Stone (by others)
10. Mortar (by others)

## Short Form Specification

### 1.0 General

This is a specification for the application of a Master Wall® Light Masonry (LiMa) application over wood or metal framing and sheathing.

#### 1.1 System Description

The Master Wall® LiMa W210 is a light masonry stone or thin brick application over a scratch coat of Master Wall® Cemplaster Fiberstucco. It uses two coats of SuperiorShield Rollershield as the air and water barrier and a drainage mat under the stucco with UltraBond as the adhesive for ICC-ES AC51 compliant stone or thin brick with mortar.

#### 1.2 Design Requirements:

- A. Reference Master Wall® suggested details and architectural drawings for specific detail requirements.
- B. Slope all surfaces a minimum of 1:2 (6" in 12") to shed water, maximum 12" (305 mm) wide.
- C. Maximum deflection of substrates shall not exceed L/360.
- D. Typical acceptable substrates include CDX exterior grade plywood, Exposure 1 Oriented Strand Board (OSB).
- E. Expansion joints are required in the cladding at building expansion joints, panel joints, floor lines in wood framed construction, and other areas where significant movement occurs.

#### 1.3 Quality Assurance

- A. The Rollershield air/water barrier shall be recognized in IAPMO ER-0384.
- B. SuperiorShield product bulletins, application instructions and details.
- C. Cemplaster Fiberstucco product bulletins, application instructions and attachment methods.

#### 1.4 Job Conditions

- A. Store all materials protected from weather and direct sunlight at temperatures above 40°F (5°C).
- B. The ambient and wall temperature shall be a minimum of 40°F (5°C) and shall remain so for at least 24 hours after installation.

#### 1.5 Warranty

- A. Application shall include a 10-year limited warranty, please reference the LiMa Warranty Program Limited Warranty.

### 2.0 Products

All components of the LiMa application shall be manufactured by Master Wall® and supplied by an authorized distributor.

#### 2.1 SuperiorShield Water Barrier & Flashing Tapes:

- A. SuperiorShield Rollershield RS: A 100% pure acrylic-based roll-applied weather-resistive barrier.
- B. SuperiorShield Rollershield TG: A 100% pure acrylic-based trowel grade water-resistive barrier.
- C. SuperiorShield Rollershield VB: Acrylic-based vapor barrier water resistive barrier.
- D. SuperiorShield Flashing Tape: A lightweight nonwoven joint treatment material.
- E. SuperiorShield Mesh Tape: A lightweight joint treatment material.
- F. SuperiorFlash: A single-component fluid applied flashing.

#### 2.2 Drainage Mat: Keene Driwall™ Rainscreen 020-1.

#### 2.3 Master Wall® Cemplaster Fiberstucco with 2.5 #/sy self-furring metal lath reinforcement:

- A. Cemplaster or Ready Cemplaster Fiberstucco and related components.
- B. 2.5 #/sy self-furring metal lath complying with ASTM C847.
- C. Appropriate fasteners as noted in the Cemplaster Fiberstucco specifications.

#### 2.4 Master Wall® Stone/Thin Brick Adhesive: UltraBond, A ready to use dry base adhesive that is field mixed with water.

### 3.0 Installation

- 3.1 Inspect the substrate to ensure that it is free of all foreign materials that would affect the adhesion of the Rollershield air and water barrier.
- 3.2 Apply the Rollershield products in accordance with the product data sheets, minimum two coats or a single coating with a dry mil thickness of at least 22 mils.
- 3.3 Mechanically fasten rainscreen with a cap nail, cap staple, or cap screw; one fastener for each square foot following Keene instructions. DO NOT FASTEN THROUGH FLASHING.
- 3.4 Mechanically attach lath to the framing members at 6" (15 cm) centers. Lap lath in accordance with Master Wall Instructions and terminate base into a weep screed placed at least 1" over foundation and 4" minimum above grade, flash in accordance with Cemplaster Fiberstucco instructions.
- 3.5 Apply a minimum 3/8" coat of Cemplaster Fiberstucco, embedding it completely into the metal lath. Score horizontally in a scratch coat application, allow to set up.
- 3.6 Adhere ICC-ES AC51-compliant stone or thin brick using UltraBond, mixed following data sheet instructions. Allow to cure before proceeding with mortar application.
- 3.7 Mortar with approved mortar, mixed with water following data sheet instructions. Place in joints using a grout bag or similar device and rake/tool when thumb print hard.

Information contained in this product data sheet conforms to the standard detail recommendations and specifications for the installation of Master Wall Inc.® products and is presented in good faith. Master Wall Inc.® assumes no liability, expressed or implied as to the architecture, engineering, or workmanship of any project. This information may be concurrent with, or superseded by other applicable documents, such as specifications and details. Contact Master Wall Inc.® for the most current product information. ©2025 Master Wall Inc.®

