



Master Wall Inc.®
Building a Culture of Excellence

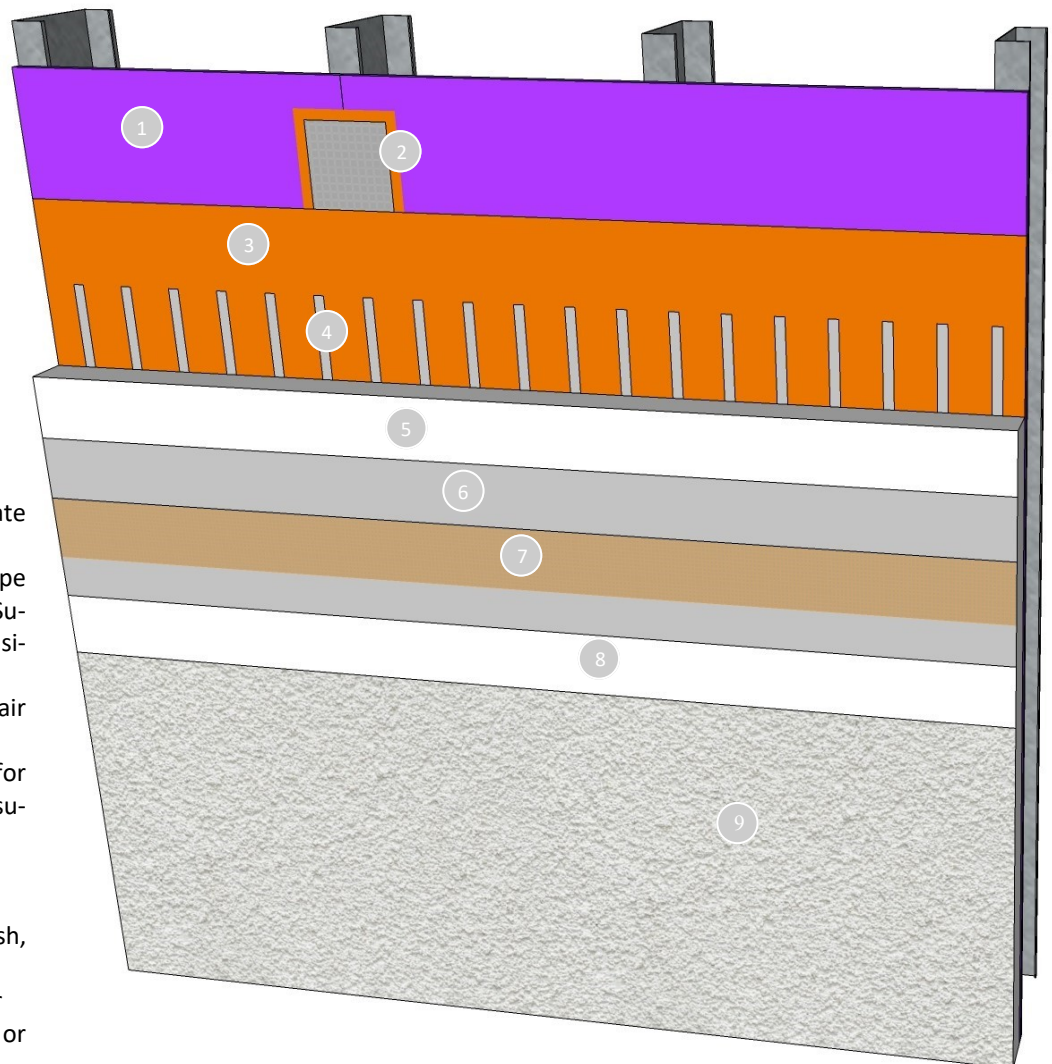
ROLLERSHIELD DRAINAGE CIFS® 12

Rollershield Drainage CIFS® 12 steps up our standard system with Primecoat Primer for better looks and weather protection. It features high weather and air protection along with high R-value continuous insulation board.

The system offers the designer a full spectrum of finish options from our standard Superior Finishes to specialty finishes.

Features & Benefits

- 12-year limited warranty
- Durable and efficient SuperiorShield Rollershield Air/Water Barrier
- Cost effective Master Wall Insulation Board
- Class leading Master Wall Standard Mesh with Medium Impact Resistance
- Primecoat Primer for improved looks



1. Framing & Approved Substrate (by others)
2. SuperiorShield Flashing Tape embedded in Rollershield or SuperiorFlash at seams and transitions
3. SuperiorShield Rollershield air and water barrier
4. Vertical Notched Channels for drainage and to adhere the insulation board
5. Master Wall® Insulation Board
6. Master Wall® Base Coat
7. Master Wall® Aggre-flex Mesh, embedded in base coat
8. Master Wall® Primecoat Primer
9. Master Wall® Superior Finish or Specialty Finish

Short Form Specification

1.0 General

This is a short form specification. Refer to Rollershield Drainage CIFS® specifications and details for additional information.

1.1 System Description

The Master Wall® Rollershield Drainage Continuously Insulated Finish System (CIFS®) is a Class PB (Polymer Based) EIF System consisting of a roll-applied water barrier, vertical channel adhesive attachment, insulation board, reinforcing mesh and a textured finish.

1.2 Design Requirements:

- A. Reference Master Wall® suggested details and architectural drawings for specific detail requirements.
- B. Slope all surfaces a recommended minimum of 1:2 (6" in 12") to shed water, maximum 12" (305 mm) wide.
- C. Maximum deflection of substrates shall not exceed L/240.
- D. Typical acceptable substrates include unpainted brick, masonry, concrete, Portland cement plaster (stucco), exterior grade gypsum sheathing (ASTM C1396), Glass Fiber Sheathing (ASTM C1177), CDX exterior grade plywood, Exposure 1 Oriented Strand Board (OSB).
- E. Expansion joints are required in the cladding at building expansion joints, panel joints, floor lines in wood framed construction, and other areas where significant movement occurs.

1.3 Quality Assurance

- A. The Rollershield Drainage System shall be recognized by local building codes.
- B. The system shall meet or exceed ASTM C1397 and detailed in accordance with ASTM E2511.
- C. The system shall have been tested for fire performance in accordance with ASTM E108, ASTM E-84, NFPA 265, and NFPA 268.
- D. The system shall have been tested for drainage performance in accordance with ASTM E331.

1.4 Job Conditions

- A. Store all materials protected from weather and direct sunlight at temperatures above 40oF (5oC).
- B. The ambient and wall temperature shall be a minimum of 40oF (5oC) and shall remain so for at least 24 hours after installation.

1.5 Warranty

- A. Master Wall Rollershield Drainage CIFS® 12-year limited warranty.

2.0 Products

All components of the Rollershield Drainage System shall be manufactured by Master Wall® and supplied by an authorized distributor.

A. SuperiorShield Water Barrier & Flashing Tapes:

- SuperiorShield Rollershield (RS): A 100% pure acrylic-based roll-applied weather-resistive barrier.
- SuperiorShield Trowel Grade (TG): A 100% pure acrylic-based trowel grade water-resistive barrier.
- SuperiorShield Flashing Tape: A lightweight nonwoven joint treatment material.

B. Master Wall Adhesives:

1. Foam & Mesh Adhesive (F&M), F&M Plus: A 100% pure acrylic-based adhesive that is field mixed with Portland cement.
2. Master Wall® Bagged Base (MBB), MBB Plus: A ready to use dry base that is field mixed with water.

C. Insulation Boards: Master Wall® Insulation Board.

D. Aggre-flex Mesh: Available in Standard, Detail, Hi-Tech, Medium, Strong and Ultra. Minimum Standard Mesh required.

E. Master Wall Base Coats:

1. Foam & Mesh Adhesive (F&M), F&M Plus.
2. Master Wall® Bagged Base (MBB), MBB Plus.

F. Primecoat: 100% pure acrylic primer.

G. Superior Finish: 100% pure acrylic formulation with integral color and texture. Perfect Swirl 2.0, Fine Sand 1.0, Medium Sand 1.5, Versatex 0.5 textures.

3.0 Installation

- A. Inspect the substrate to ensure that it is free of all foreign materials that would affect the adhesion of the Rollershield Drainage CIFS® System.
- B. Apply the system in strict accordance with Master Wall® specifications, product data sheets, architectural drawings and architectural specifications using the products noted above.

Information contained in this product data sheet conforms to the standard detail recommendations and specifications for the installation of Master Wall Inc.® products and is presented in good faith. Master Wall Inc.® assumes no liability, expressed or implied as to the architecture, engineering, or workmanship of any project. This information may be concurrent with, or superseded by other applicable documents, such as specifications and details. Contact Master Wall Inc.® for the most current product information. ©2025 Master Wall Inc.®

