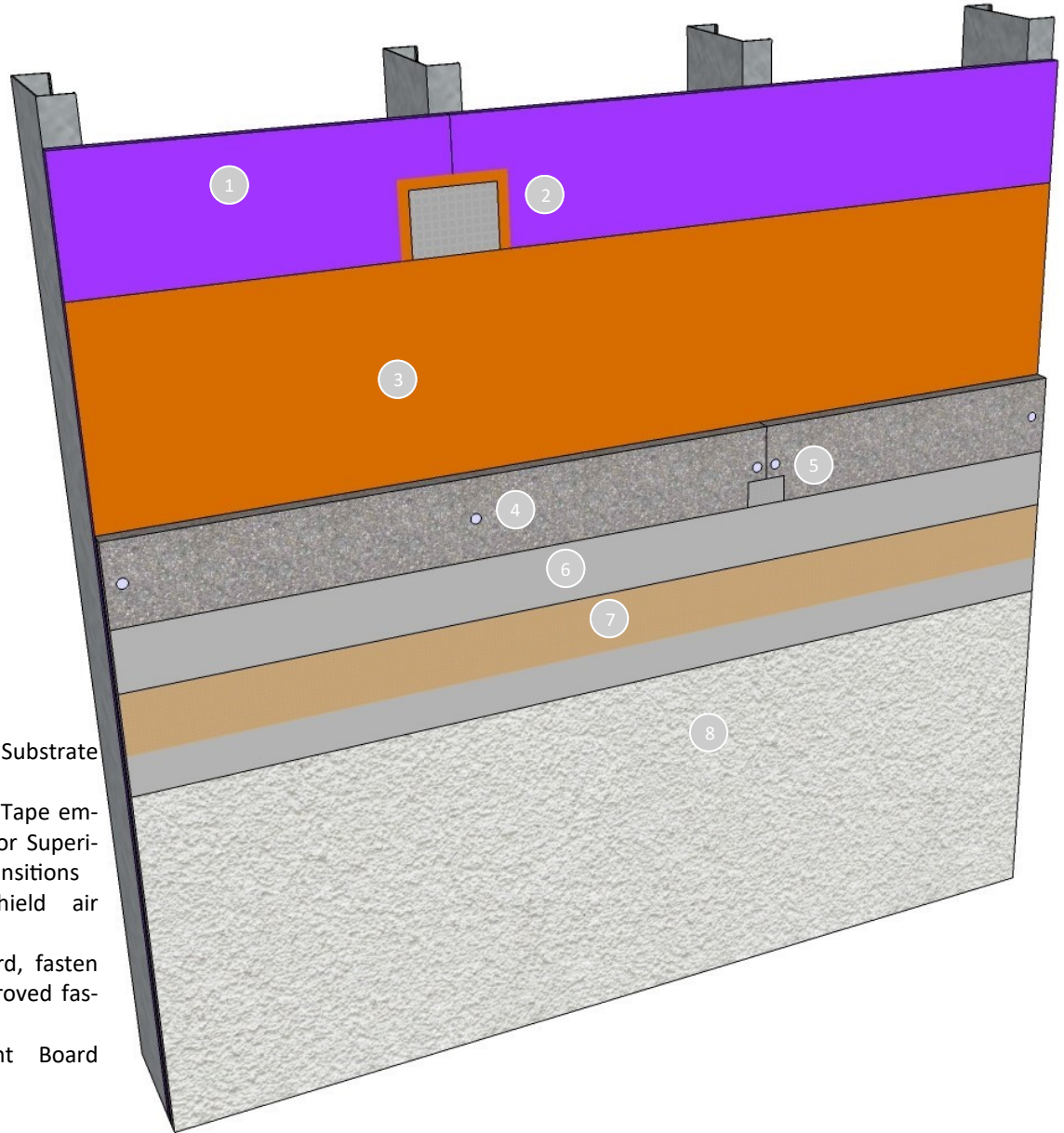




Master Wall Inc.
Building a Culture of Excellence

STUCCO CEMENT BOARD COATINGS SC10RS



1. Framing & Approved Substrate (by others)
2. SuperiorShield Flashing Tape embedded in Rollershield or SuperiorFlash at seams and transitions
3. SuperiorShield Rollershield air and water barrier
4. Approved Cement Board, fasten with manufacturer approved fasteners
5. Master Wall® Cement Board Mesh
6. Master Wall® Base Coat
7. Master Wall® Aggre-flex Mesh, embedded in base coat
8. Master Wall® Superior Finish or Specialty Finish

SC10RS ASSEMBLY

Information contained in this product data sheet conforms to the standard detail recommendations and specifications for the installation of Master Wall Inc.® products and is presented in good faith. Master Wall Inc.® assumes no liability, expressed or implied as to the architecture, engineering, or workmanship of any project. This information may be concurrent with, or superseded by other applicable documents, such as specifications and details. Contact Master Wall Inc.® for the most current product information. ©2025 Master Wall Inc.®

