

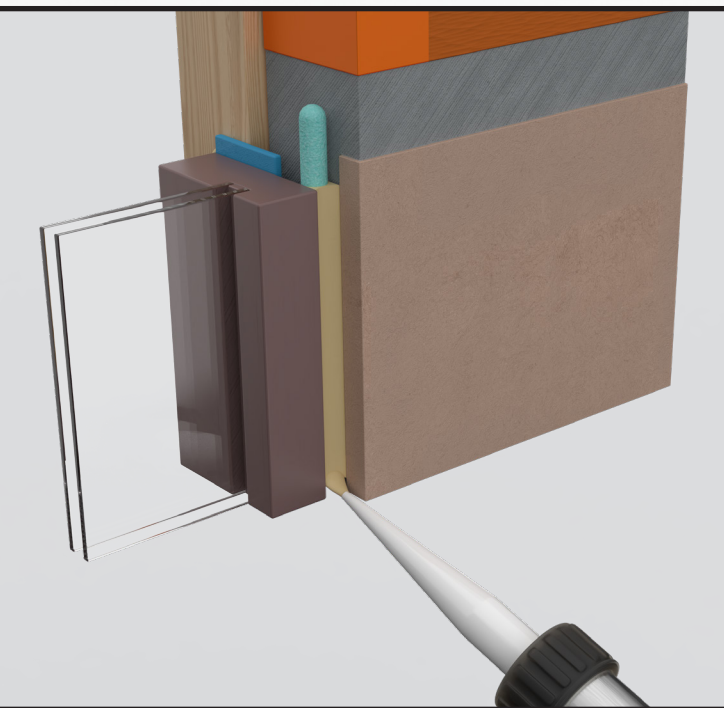


Rollershield[®]

**Drainage CIFS/EIFS
Systems & Warranties**



 **Master Wall Inc.[®]**
Building a Culture of Excellence



SuperiorShield SMP Sealant

Two-year extended sealant warranty

Master Wall® SuperiorShield SMP Sealants is a one-component, low modulus, solvent-free Silyl Modified Polyether Sealant for Master Wall® Systems and other approved substrates. This hybrid sealant has excellent color stability and adhesion capability with long-lasting elastomeric properties. Along with our standard warranties, adding our exclusive line of sealants will extend your projects warranty by two years.

Features & Benefits

- Seals joints between common building materials
- Interior and exterior bonds
- Perimeter seals for windows, doors, and other wall penetrations
- Easy to gun and tool
- Fast cure and tack-free time
- Paintable with acrylic coatings
- Extends Master Wall System warranties an additional two years

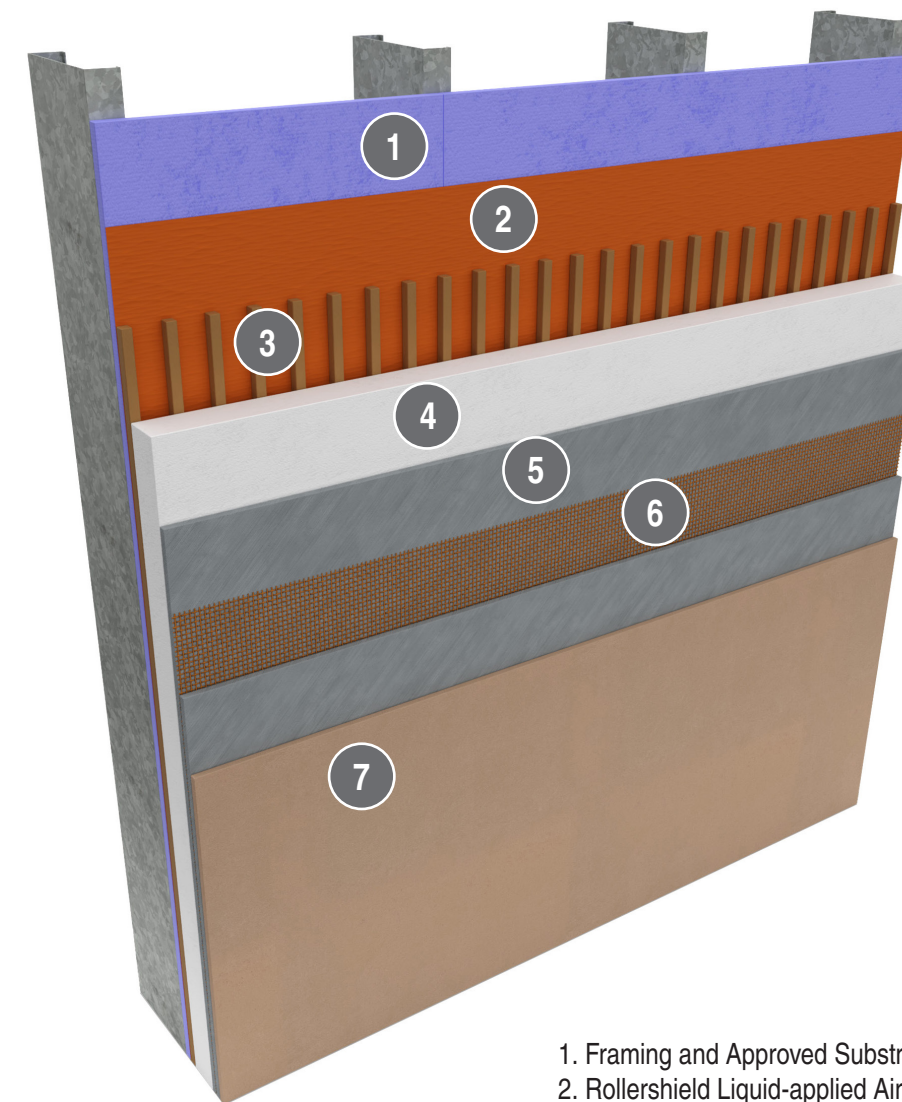
Rollershield Drainage CIFS® 10

Rollershield Drainage CIFS® 10 is the gold standard system in our industry. Formulated with 100% pure acrylics it exceeds industry standards for impact resistance with excellent water drainage should incidental water enter the system.

The system offers the designer a full spectrum of finish options from our standard Superior Finishes to specialty finishes.

Features & Benefits

- 10-year limited warranty
- Durable and efficient SuperiorShield Rollershield Air/Water Barrier
- Master Wall® Continuous insulation
- Master Wall® standard mesh with Medium Impact Resistance



1. Framing and Approved Substrate (by others)
2. Rollershield Liquid-applied Air/Water Barrier (LAB)
3. Vertical notched adhesive and drainage channel
4. Master Wall® Continuous Insulation
5. F&M or MBB Base Coat
6. Standard mesh minimum
7. Superior Finish

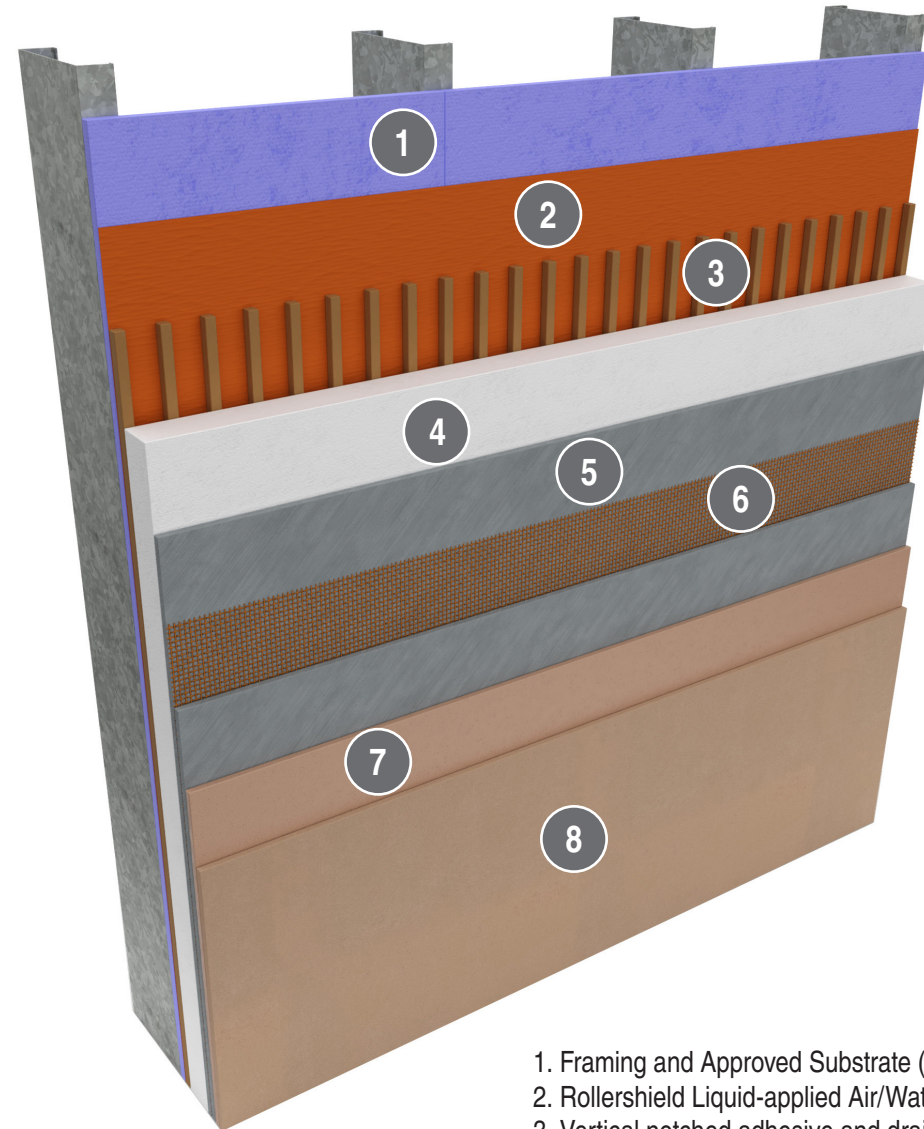
Rollershield Drainage CIFS® 12

Rollershield Drainage CIFS® 12 steps up our standard system with Primecoat Primer for better looks and weather protection. It features high weather and air protection along with high R-value continuous insulation.

The system offers the designer a full spectrum of finish options from our standard Superior Finishes to specialty finishes.

Features & Benefits

- 12-year limited warranty
- Durable and efficient SuperiorShield Rollershield Air/Water Barrier
- Master Wall® Continuous Insulation
- Master Wall® standard mesh with medium impact resistance
- Primecoat and Superior Finish



1. Framing and Approved Substrate (by others)
2. Rollershield Liquid-applied Air/Water Barrier (LAB)
3. Vertical notched adhesive and drainage channel
4. Master Wall® Continuous Insulation
5. F&M or MBB Base Coat
6. Standard Mesh Minimum
7. Primecoat primer
8. Superior Finish

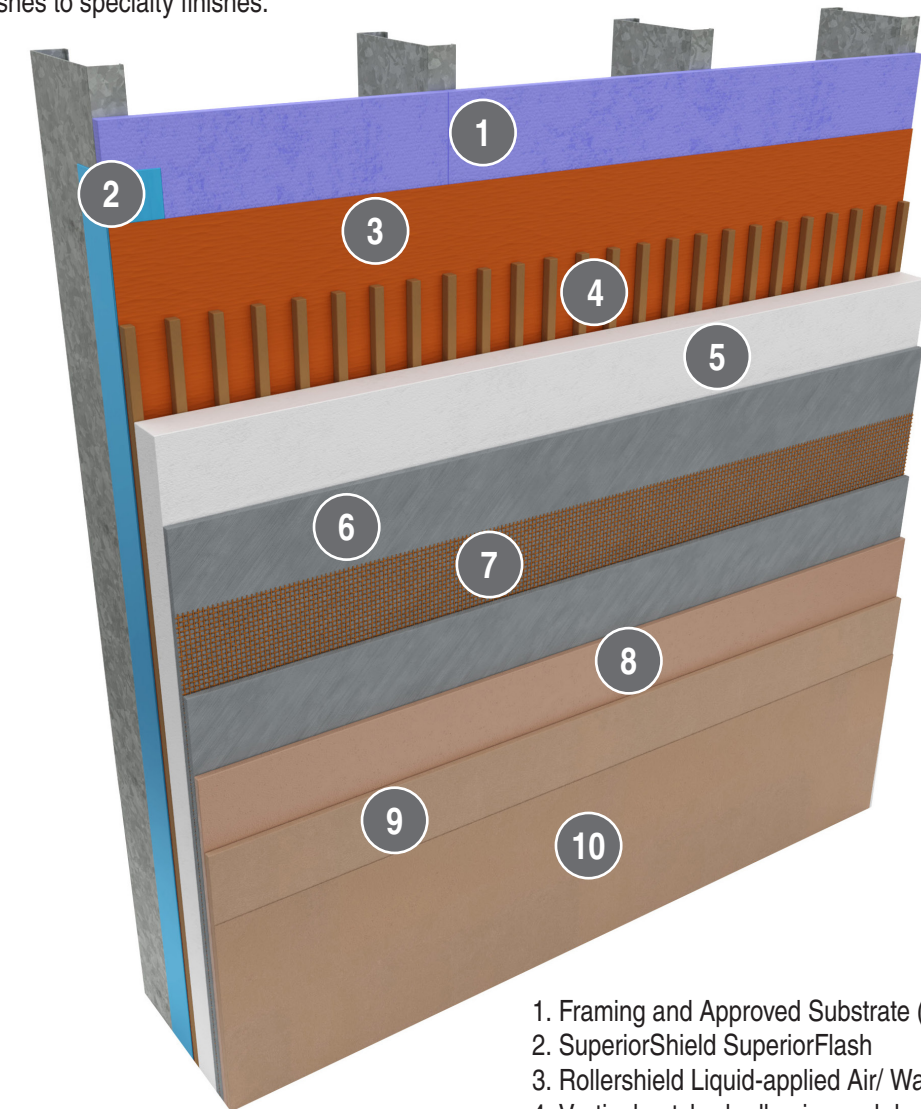
Rollershield Drainage CIFS® 16

Rollershield Drainage CIFS® 16 is an upgraded Continuous Insulation and Finish System with extra durability. It features upgraded mesh for improved tensile strength along with Clearshield sealer for enhanced weather protection.

The system offers the designer a full spectrum of finish options from our standard Superior Finishes to specialty finishes.

Features & Benefits

- 16-year limited warranty
- Upgraded with SuperiorFlash at openings and penetrations
- Master Wall® "Plus" base coats and adhesives used throughout the system for better leveling and appearance
- Hi-Tech Mesh for improved durability
- Clearshield Sealer for extra protection



1. Framing and Approved Substrate (by others)
2. SuperiorShield SuperiorFlash
3. Rollershield Liquid-applied Air/ Water Barrier (LAB)
4. Vertical notched adhesive and drainage channel
5. Master Wall® Continuous Insulation
6. F&M Plus or MBB Plus Base Coat
7. Hi-Tech Mesh minimum
8. Primecoat primer
9. Superior Finish
10. Clearshield Sealer

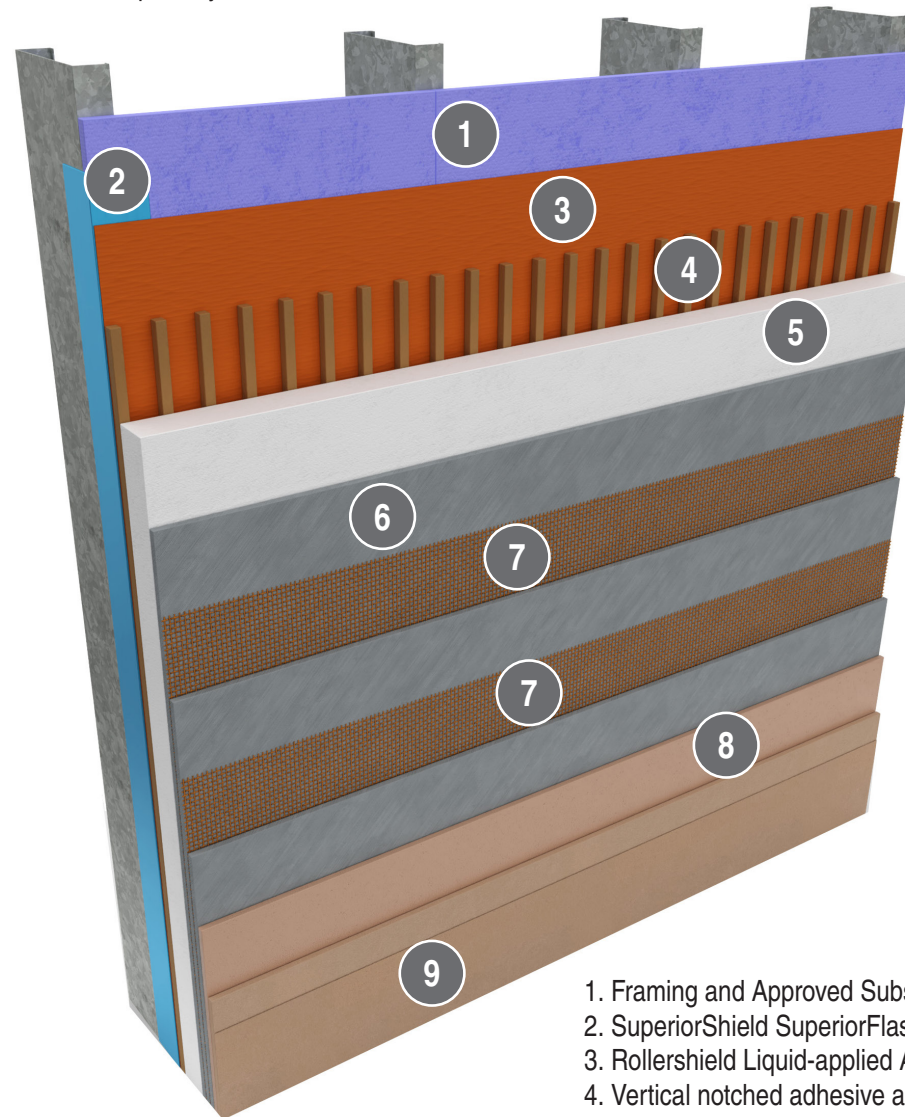
Rollershield Drainage CIFS® 18

Rollershield Drainage CIFS® 18 is the premium Continuous Insulation and Finish System for high end projects. It features upgraded impact resistance and a hydrophobic Superior Finish HP for long lasting durability.

The system offers the designer a full spectrum of finish options from our standard Superior Finishes to specialty finishes.

Features & Benefits

- 18-year limited warranty
- Upgraded with SuperiorFlash at openings and penetrations
- Master Wall® “Plus” base coats and adhesives used throughout the system for better leveling and appearance
- Minimum double layer mesh for better impact resistance
- Superior HP Finish for long life and weather resistance



1. Framing and Approved Substrate (by others)
2. SuperiorShield SuperiorFlash
3. Rollershield Liquid-applied Air/Water Barrier (LAB)
4. Vertical notched adhesive and drainage channel
5. Master Wall® Continuous Insulation
6. F&M Plus or MBB Plus Base Coat
7. 2-layers Standard Mesh minimum, Corner Roll at all corners
8. Primecoat
9. Superior HP Finish

Warranties

- Warranties are important. Master Wall Inc.® views the warranty process as the final handshake with the owner, and we take care to process them quickly. Finishing strong means your project closeout will go smoothly.
- All of our Exterior Insulation and Finish Systems offer competitive limited warranties with labor and material coverage for defective materials. All drainage systems are warranted for drainage of incidental water for the full warranty term.
- Not all standard warranties fit custom projects. If you're looking to design an extended warranty for your project, please contact a Master Wall Inc.® Sales Representative or Technical Services.

Master Wall Inc.® offers both labor and labor/material-type warranties depending upon product and system selection. Please reference the sample warranties for the selected system or contact us for a sample copy.



Information contained in this product data sheet conforms to the standard detail recommendations and specifications for the installation of Master Wall Inc.® products and is presented in good faith. Master Wall Inc.® assumes no liability, expressed or implied as to the architecture, engineering, or workmanship of any project. This information may be concurrent with, or superseded by other applicable documents, such as specifications and details. Contact Master Wall Inc.® for the most current product information. ©2020 Master Wall Inc.®



Corporate Office

6975 Flat Rock Road
Midland, GA 31820

Georgia Manufacturing

2265 Lithonia Industrial Boulevard
Stonecrest, GA 30058

Utah Manufacturing

810 West Utah Avenue #1
Payson, UT 84651

Texas Manufacturing

3943 FM 362
Brookshire, TX 77423

Northeast Hub

1329 N. Reading Rd.
Stevens, PA 17578-9491

Technical Service

tech@masterwall.com

800-755-0825

customerservice@masterwall.com

masterwall.com

Master Wall Inc.®
Building a Culture of Excellence

masterwall.com