



LiMa Wall Assemblies

Light masonry Wall Systems (LiMa)



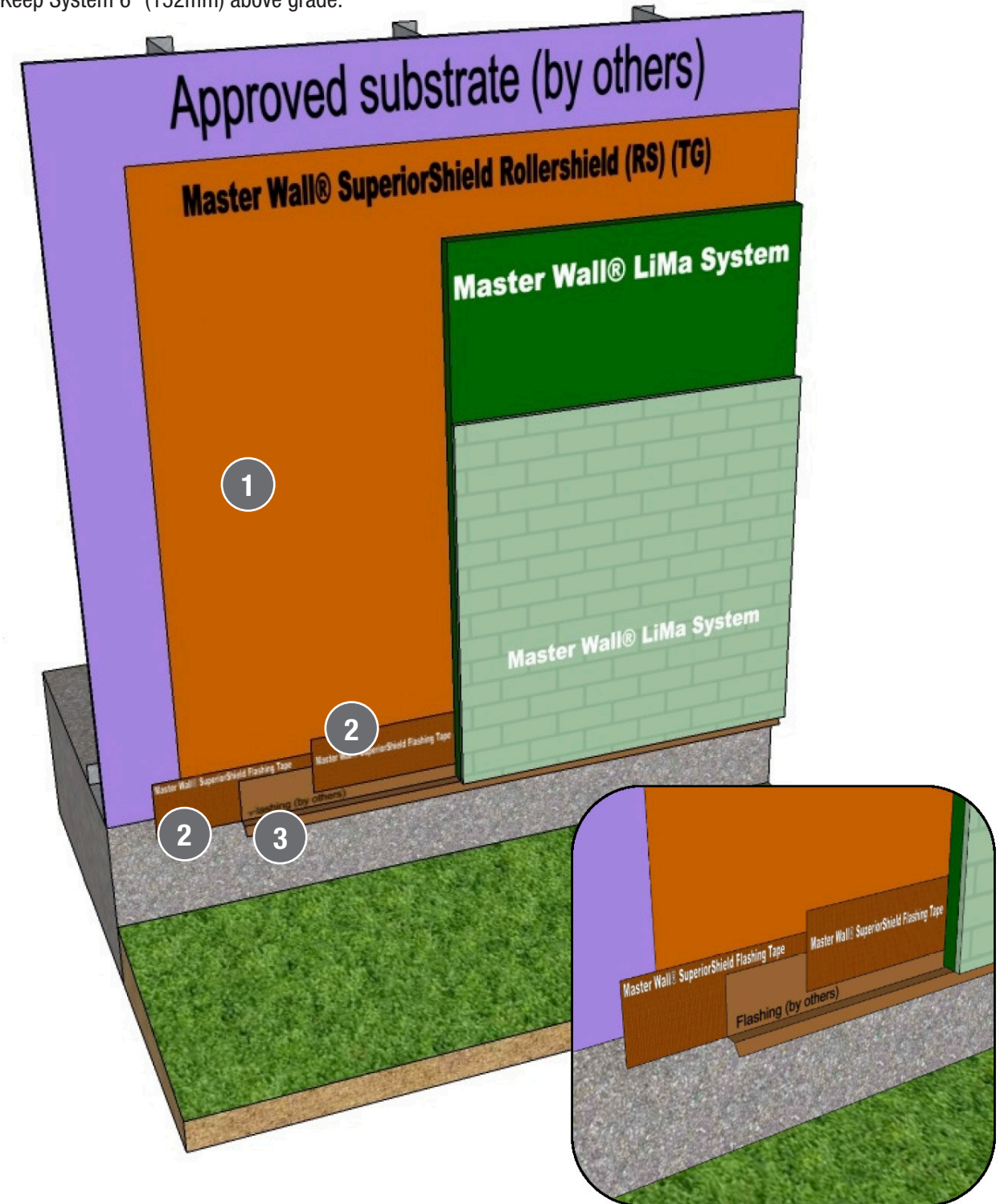
 **Master Wall Inc.**[®]
Building a Culture of Excellence



Master Wall, Inc. is a company founded on the principles of honesty, service and integrity. Our commitment to building a culture of excellence starts with an understanding that reliability and responsiveness are at the core of a productive customer relationship. It's an understanding that sets our company apart. We strive to develop, manufacture and distribute the highest quality exterior systems to a regional, national and global marketplace. Our products include Fiberstucco, EIFS, Acrylic Finishes, Interior Coatings, Drainage Systems and Liquid Applied Barriers. Architects, builders and contractors can trust and depend on Master Wall® for competitive pricing and maximum performance. After all, our people and products have been finishing strong for over 30 years.

LiMA D-01 Detail at Grade

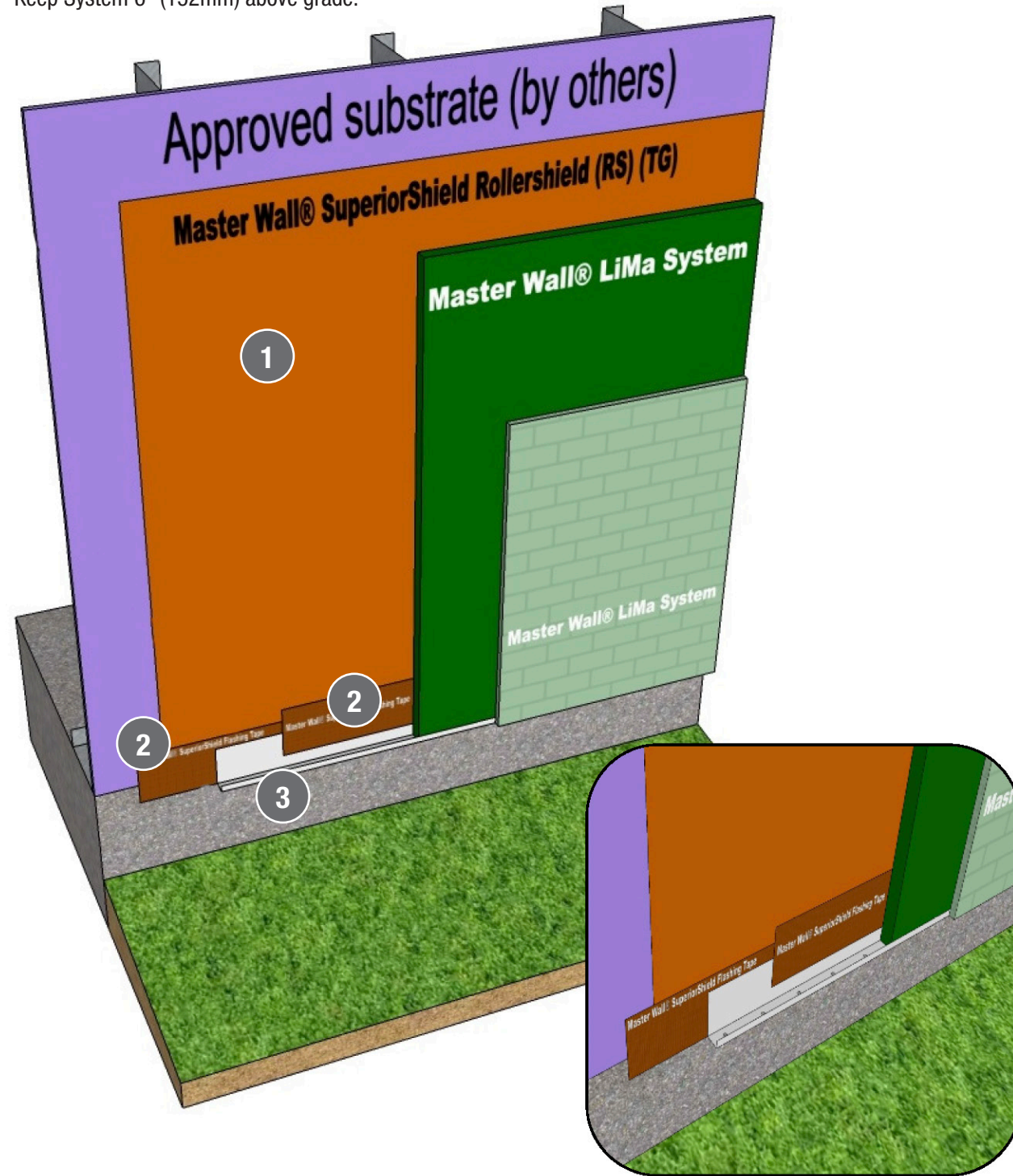
Keep System 6" (152mm) above grade.



1. Rollershield Air/Water Barrier shown (options vary with system selection)
2. Rollershield Flashing Tape shown: SuperiorFlash option, WeatherStop Tape option, Rollershield Mesh option
3. Flashing

LiMA D-02 Detail at Grade

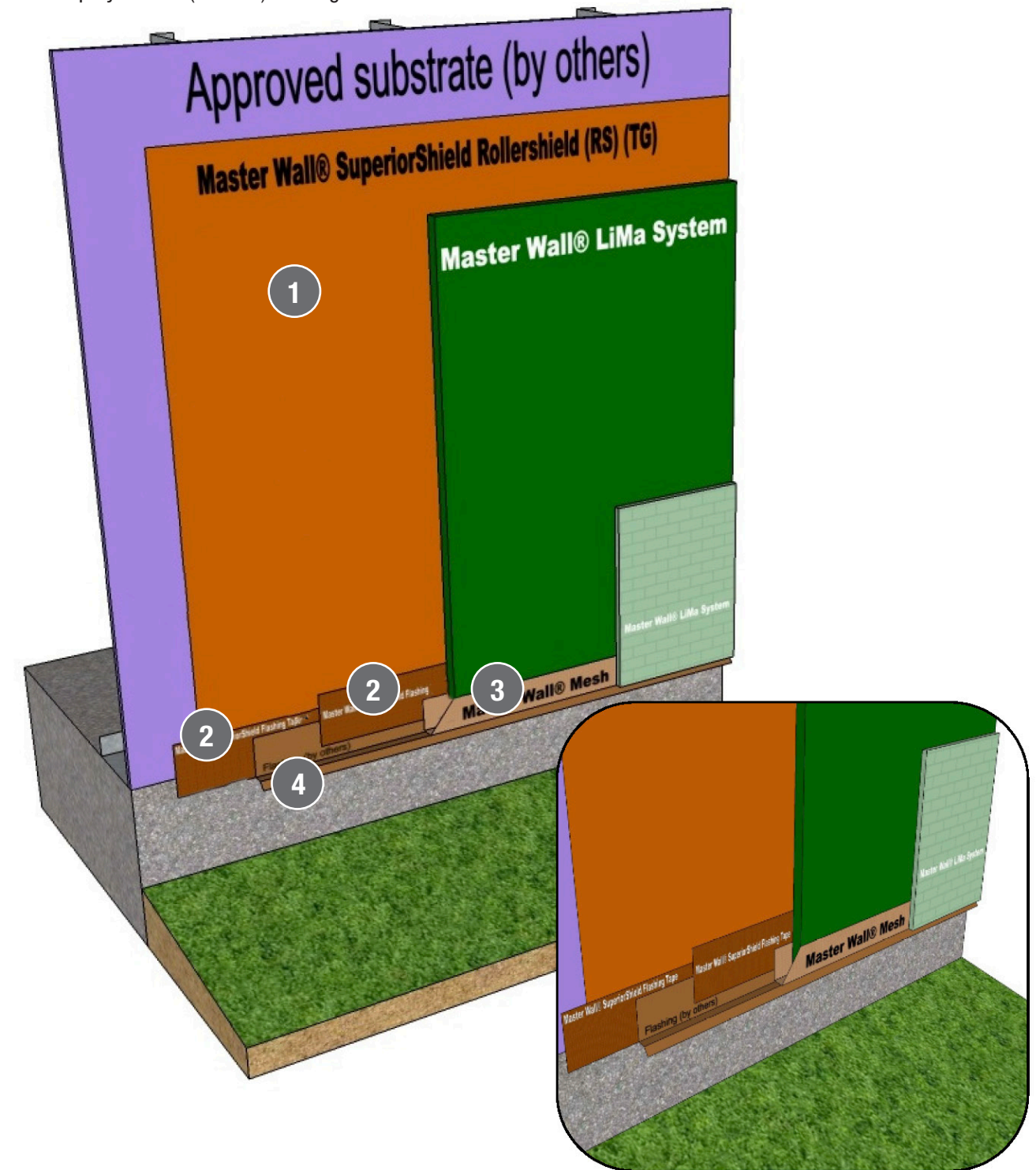
Keep System 6" (152mm) above grade.



1. Rollershield Air/Water Barrier shown (options vary with system selection)
2. Rollershield Flashing Tape shown: SuperiorFlash option, WeatherStop Tape option, Rollershield Mesh option
3. Drainage Track option. Works well for insulated closures.

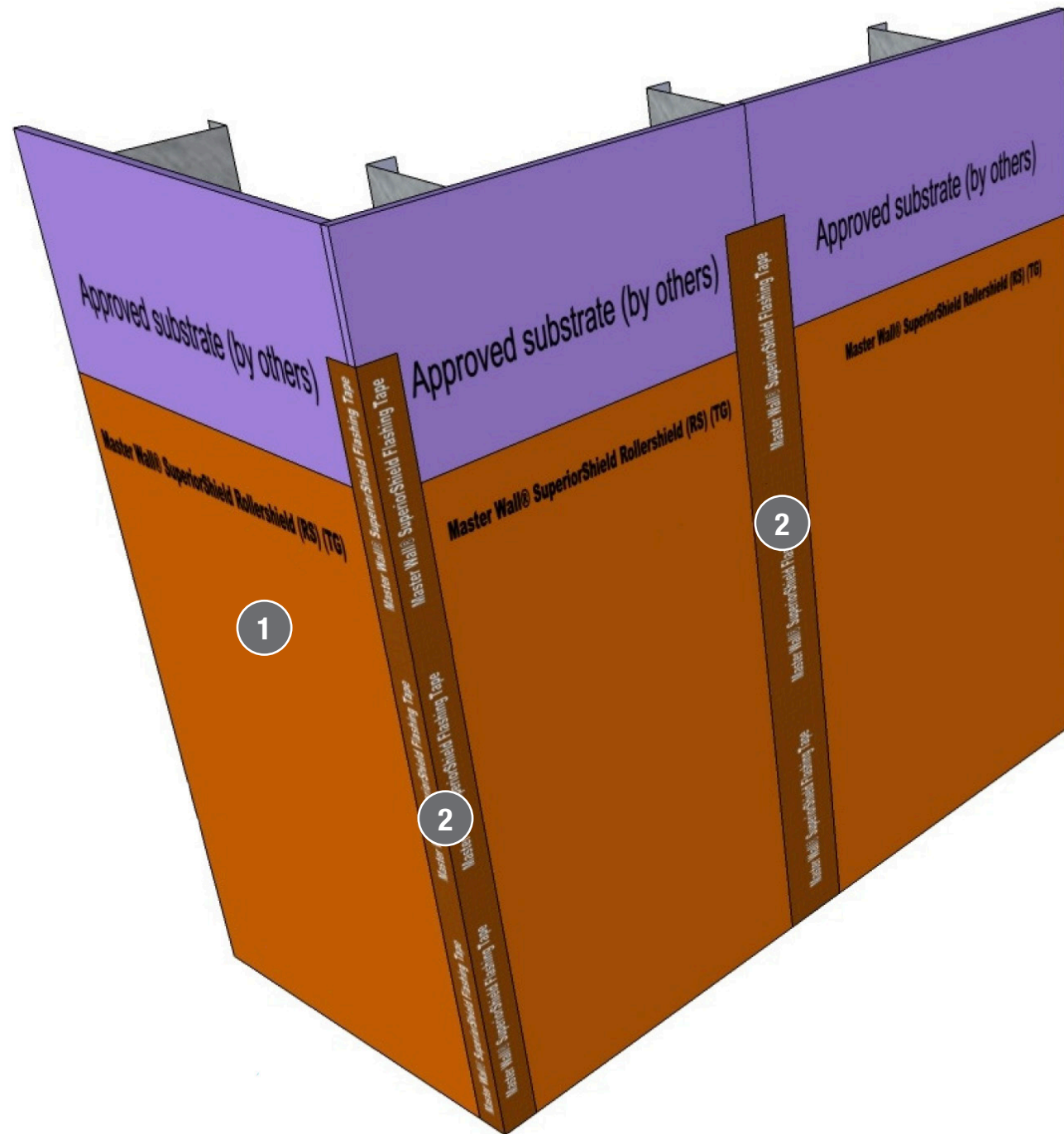
LiMA D-03 Detail at Grade

Keep System 6" (152mm) above grade.



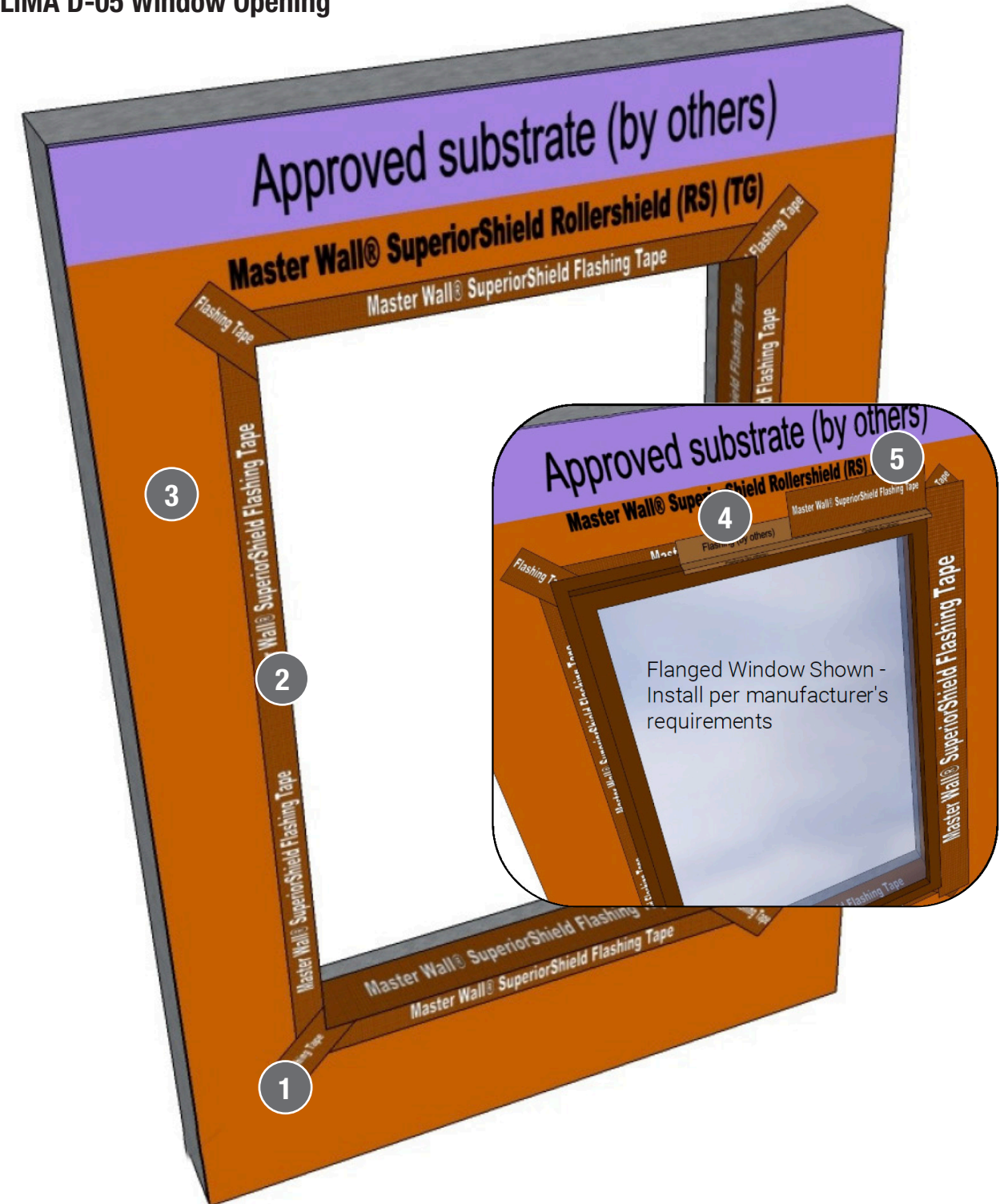
1. Rollershield Air/Water Barrier shown (options vary with system selection)
2. Rollershield Flashing Tape shown: SuperiorFlash option, WeatherStop Tape option, Rollershield Mesh option
3. Backwrap with Master Wall® Mesh embedded in Base Coat
4. Flashing

LiMA D-04 Rollershield LAB Seam Details



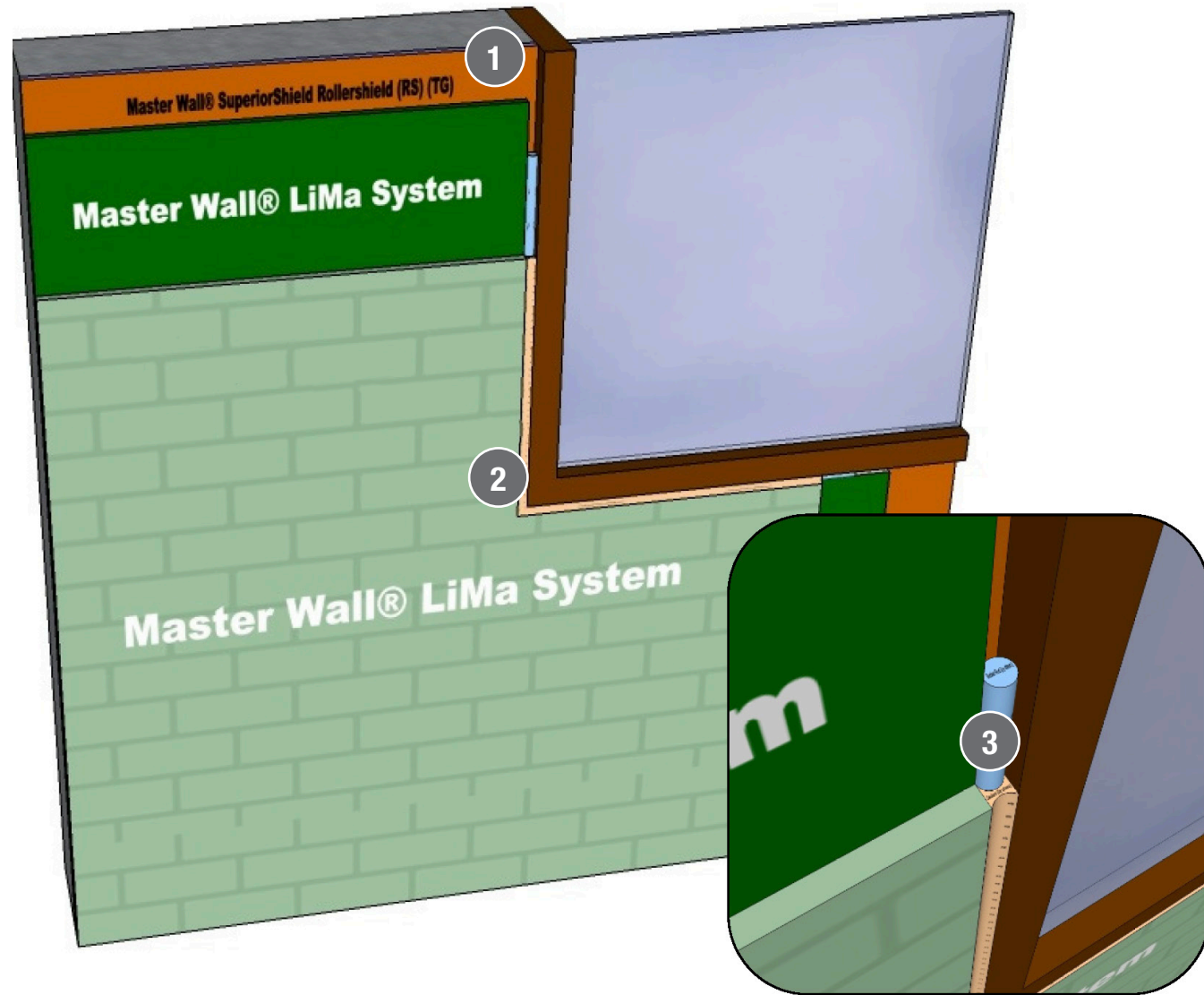
1. Rollershield Air/Water Barrier shown (options vary with system selection)
2. Rollershield Flashing Tape shown at all substrate seams:
SuperiorFlash option, WeatherStop Tape option, Rollershield Mesh option
Notes: See Rollershield LAB details for a full set of detailing options.
For other code-approved water barriers follow manufacturer's instruction.

LiMA D-05 Window Opening



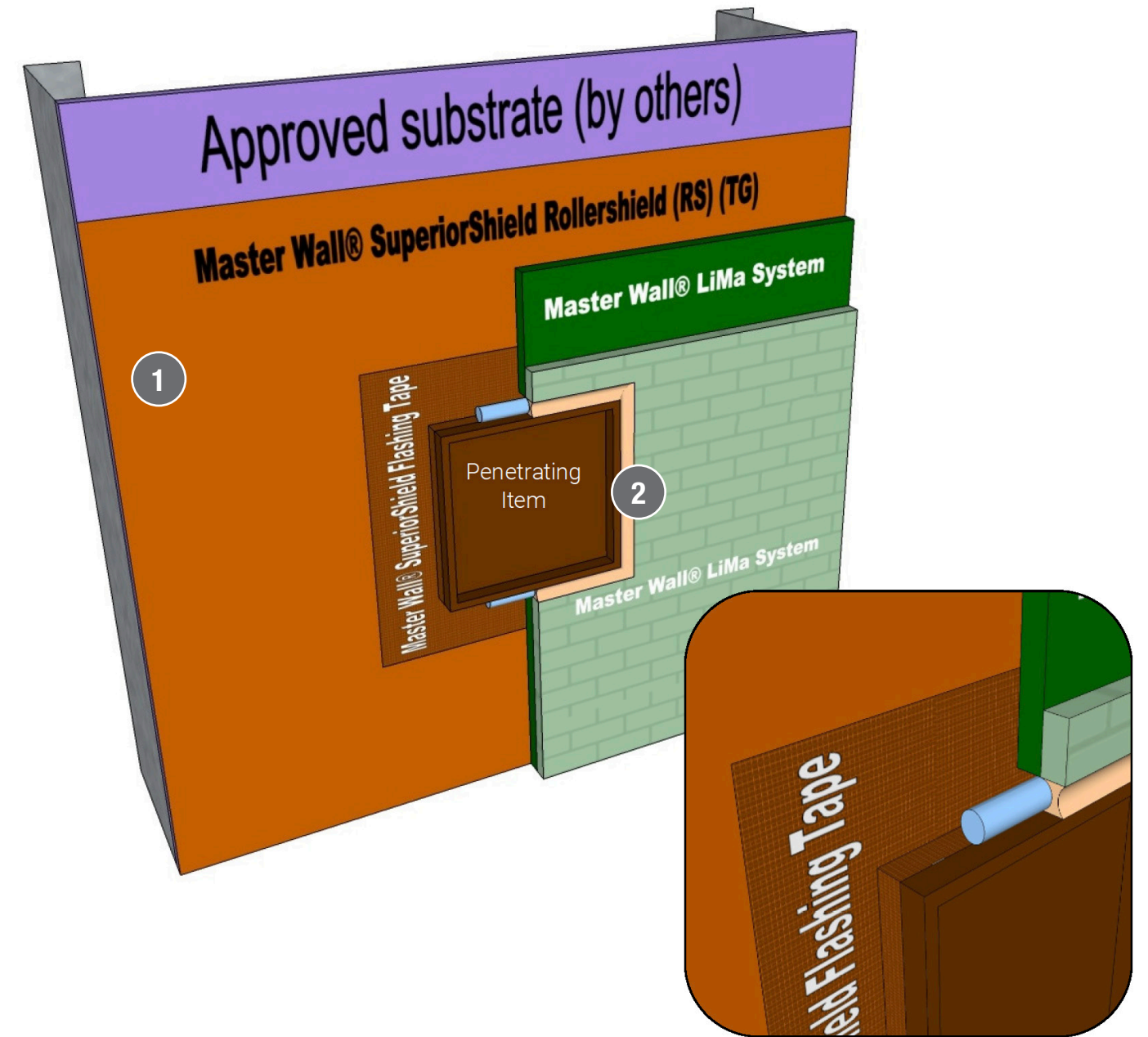
1. Diagonal Rollershield Flashing Tape shown: SuperiorFlash option, WeatherStop Tape option, Rollershield Mesh option
Notes: See the Rollershield LAB details for a full set of detailing options.
For other code-approved water barriers follow manufacturer's instructions.
2. Rollershield Flashing Tape shown at all substrate seams and turned into window opening at least the depth of the window unit: SuperiorFlash option, WeatherStop Tape option, Rollershield Mesh option
3. Rollershield Air/Water Barrier shown (options vary with system selection)
4. Window Head Flashing
5. Rollershield Flashing Tape shown adhered over flashing

LiMA D-06 LiMa to Window Detail



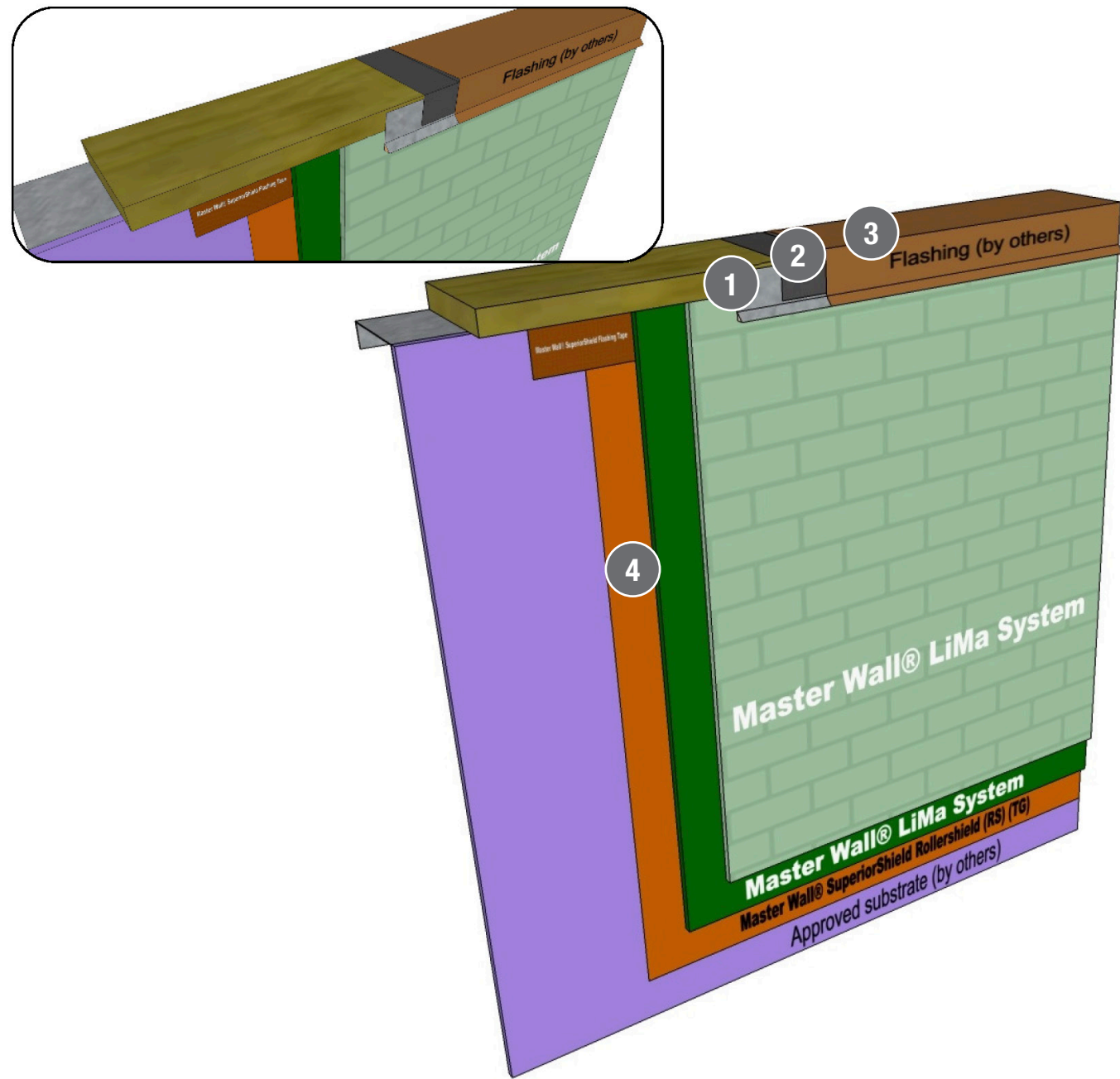
1. Rollershield Air/Water Barrier shown (options vary with system selection)
2. 3/8" (9.5 mm) minimum sealant joint with backer rod
3. Backer Rod

LiMA D-07 LiMa to Wall Penetration Detail



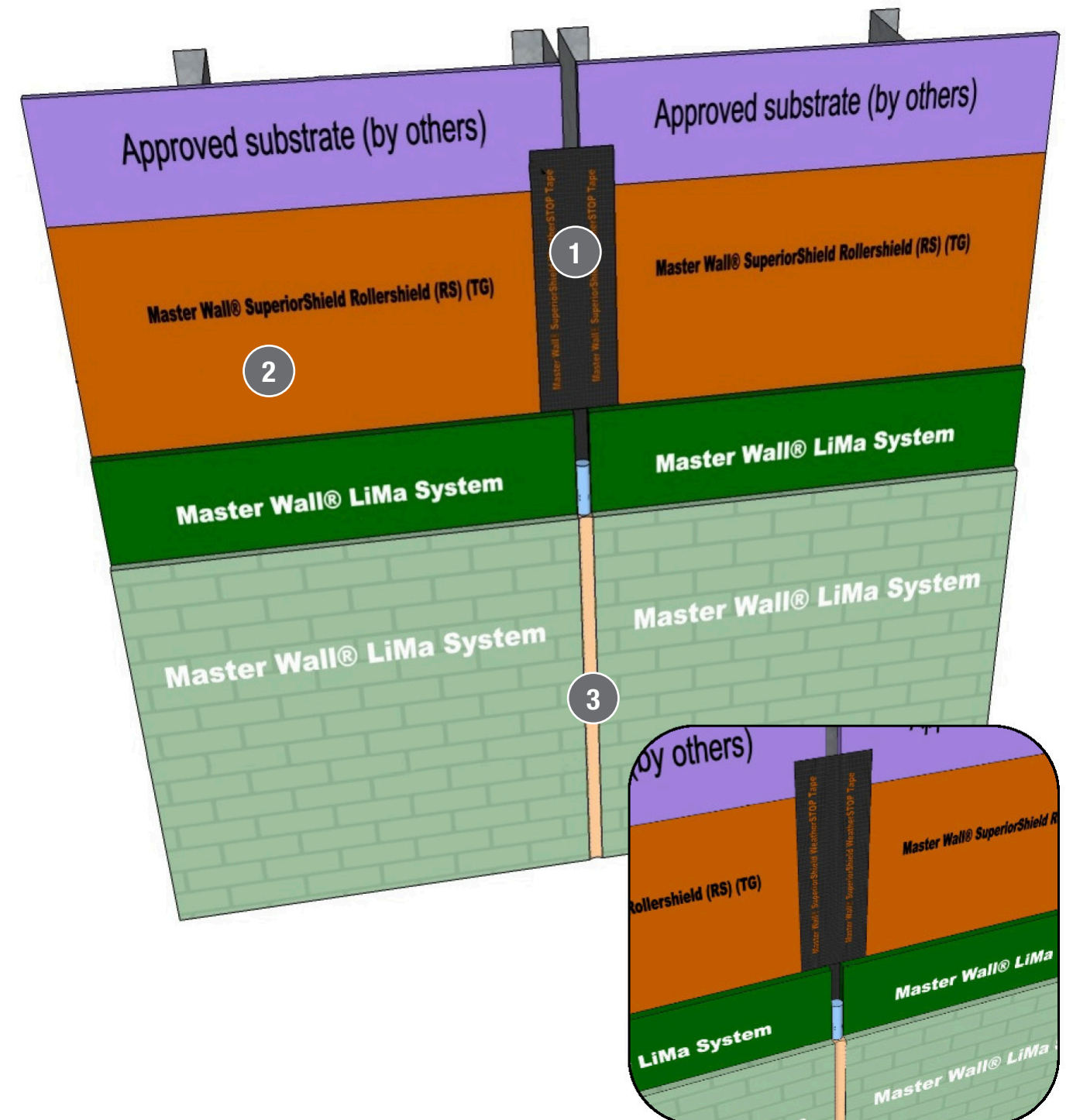
1. Rollershield Air/Water Barrier shown (options vary with system selection)
2. 3/8" (9.5 mm) minimum sealant joint with backer rod

LiMA D-08 Parapet Cap Detail



1. Parapet cap
2. Secondary protection
3. Continuous cleat (Extend 2" (51 mm) over the system and seal lower edge.)
4. Rollershield Air/Water Barrier Shown (Options vary with system selection)

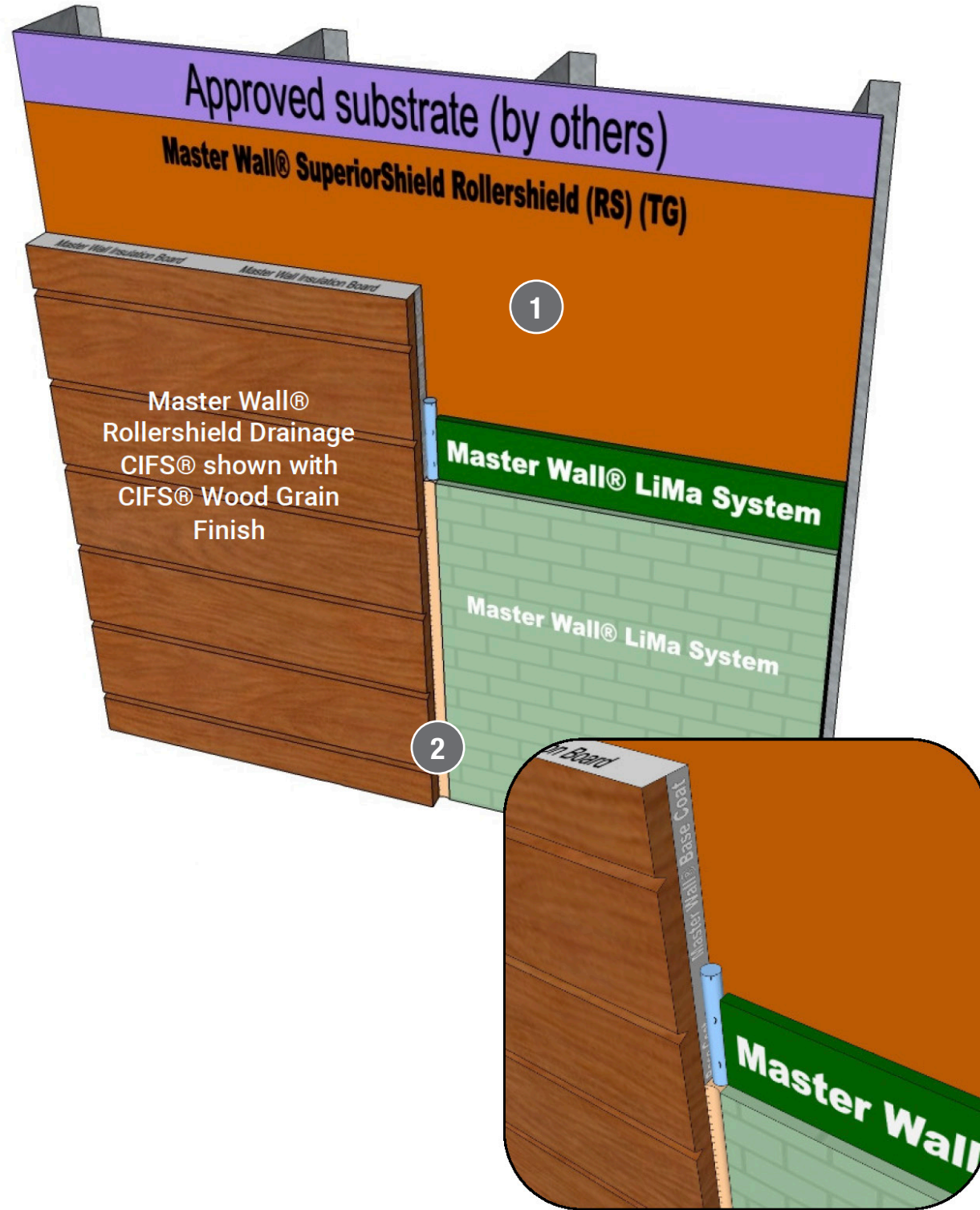
LiMA D-09 Expansion Joint Detail



1. WeatherStop Tape shown at substrate expansion joint: Rollershield with Rollershield Flashing Tape and backing, SuperiorFlash with backing option
2. Rollershield Air/Water Barrier shown (options vary with system selection)
3. Sealant joint and backer rod sized for anticipated movement, 3/8" (9.5 mm) minimum
Notes: See the Rollershield LAB details for the full set of detailing options.
 For other code-approved water barriers follow manufacturer's instructions.

Warranties

LiMA D-10 Dissimilar Materials



1. Rollershield Air/Water Barrier Shown (Options vary with system selection)
 2. Sealant joint and backer rod sized for anticipated movement, 3/8" (9.5 mm) minimum
- Notes: See the Rollershield LAB details for the full set of detailing options.
For other code-approved water barriers follow manufacturer's instructions.

Master Wall® LiMa Warranted Wall Assemblies Light masonry Wall Systems (LiMa)

5-year Limited Warranty

| System | Framing | Location | Components (see code) |
|----------|------------------|----------|-----------------------------|
| LiMaW105 | Wood/Metal | Exterior | 2RS, CB, UB, TBS, M |
| LiMaW205 | Wood/Metal | Exterior | 2RS, WRB, CFSMB, UB, TBS, M |
| LiMaM105 | Metal Framing | Exterior | ES, 2-WRB, CB, UB, TBS, M |
| LiMaC105 | Concrete/Masonry | Exterior | UB, TBS, M |

10-year Limited Warranty

| System | Framing | Location | Components (see code) |
|------------|------------|----------------------|--|
| LiMaW110 | Wood/Metal | Exterior | 2RS, DM, CB, UB, TBS, M |
| LiMaW210 | Wood/Metal | Exterior | 2RS, WRB, DM, CFSMB, UB, TBS, M |
| LiMai310TV | Wood/Metal | Exterior - Insulated | 2RS, UB (adhesive), EPS, MSH (Standard) in UB, FP, TBS, M |
| LiMai410TV | Wood/Metal | Exterior - Insulated | RS, UB (adhesive), EPS, MSH (Medium) in UB, TBS, M |
| LiMai510CB | Wood/Metal | Exterior - Insulated | 2RS, iCB, UB, TBS, M |
| LiMai610CB | Wood/Metal | Exterior - Insulated | 2RS, Hunter Xci-CG or CG (Class A) or Xci-Foil (Class A), 1/2" PermaBase, UB, TBS, M |

20-year Limited Warranty

| System | Framing | Location | Components (see code) |
|----------|---------------|----------|---|
| LiMaW120 | Wood/Metal | Interior | 2RS, DM, CB, UB, TBS, M |
| LiMaM120 | Metal Framing | Exterior | ES, 2RS, WRB, DM, CFSMB with SA03, UB, TBS, M |
| LiMaM220 | Metal Framing | Exterior | ES, 2-WRB, CFSMB, 2RS, UB, TBS, M |
| LiMaM320 | Metal Framing | Exterior | ES, 2RS, WRB, CB, UB, TBS, M |
| LiMaM420 | Metal Framing | Exterior | ES, 2-WRB, CB, 2RS, UB, TBS, M |

30-year Limited Warranty

| System | Framing | Location | Components (see code) |
|----------|------------------|----------|-----------------------------|
| LiMaC130 | Concrete/Masonry | Exterior | 2RS, UB, TBS, M |
| LiMaC230 | Concrete/Masonry | Exterior | UB Leveler, 2RS, UB, TBS, M |

- 2RS** 2-coats Rollershield
- CB** 1/2" or 5/8" PermaBase® Cement Board
- ES** ASTM C1177 Exterior Gypsum Sheathing
- iCB** Insulated Cement Board
- UB** UltraBond
Thin Brick or Stone, AC51 compliant, 12 pounds per square foot (49 kg/m²) with no single unit greater than 20 pounds (9 kg)
- TBS** pounds (9 kg)
- M** CIFS® Brick Mortar
- WRB** Weather Resistive Barrier approved by Building Code
- DM** Keene 020-1 Drainage Mat
- CFSMB** Cemplaster Fiberstucco used as Mortar Bed, 2.5#/sy self-furring metal lath reinforcement
- EPS** Expanded Polystyrene Insulation Board
- MSH** 6 oz Hi-Tech Mesh
- FP** Wind-Lock Lath lock Fasteners & Plates 36" o.c. vertically, within 6" of wall tops
- TV** Type V Construction only



Corporate Office

6975 Flat Rock Road
Midland, GA 31820
800-755-0825
customerservice@masterwall.com

Georgia Manufacturing

2265 Lithonia Industrial Boulevard
Stonecrest, GA 30058
800-755-0825

Utah Manufacturing

810 West Utah Avenue #1
Payson, UT 84651
888-492-0023

Texas Manufacturing

3943 FM 362
Brookshire, TX 77423
800-755-0825

Northeast Hub

1329 N. Reading Rd.
Stevens, PA 17578-9491
833-754-1580

Technical Service

tech@masterwall.com

Master Wall Inc.[®]
Building a Culture of Excellence

masterwall.com